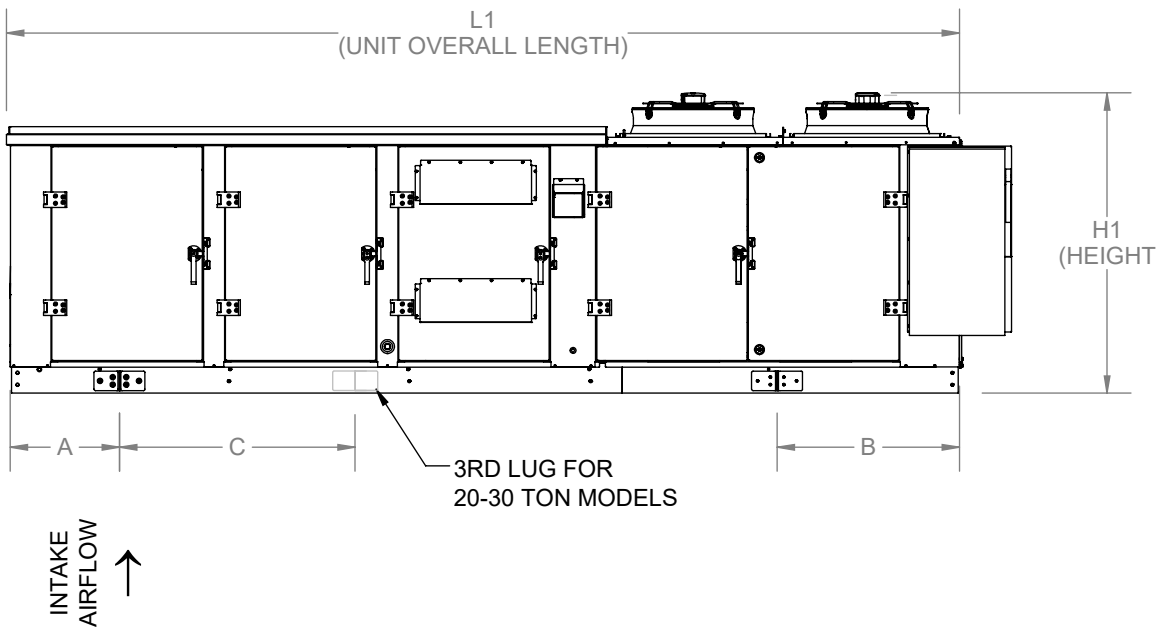


RIGHT SIDE VIEW 3





| AIR FLOW | UNIT CABINET SIZES | UNIT SIZE (TONS) | L1 | W1 | H1 | W2 | H4 |
|-----------|--------------------|------------------|---------|--------|----|--------|--------|
| DOWN FLOW | 50 | 08 | 158 7/8 | 61 3/8 | 50 | 73 3/8 | 11 7/8 |
| | | 10 | 158 7/8 | 61 3/8 | 50 | 73 3/8 | 11 7/8 |
| | | 12 | 158 7/8 | 61 3/8 | 50 | 73 3/8 | 11 7/8 |
| | | 15 | 158 7/8 | 61 3/8 | 50 | 73 3/8 | 11 7/8 |
| DOWN FLOW | 82 | 20 | 184 1/2 | 94 1/4 | 80 | 106 | 21 3/8 |
| | | 25 | 184 1/2 | 94 1/4 | 80 | 106 | 21 3/8 |
| | | 30 | 208 1/2 | 94 1/4 | 80 | 106 | 21 3/8 |

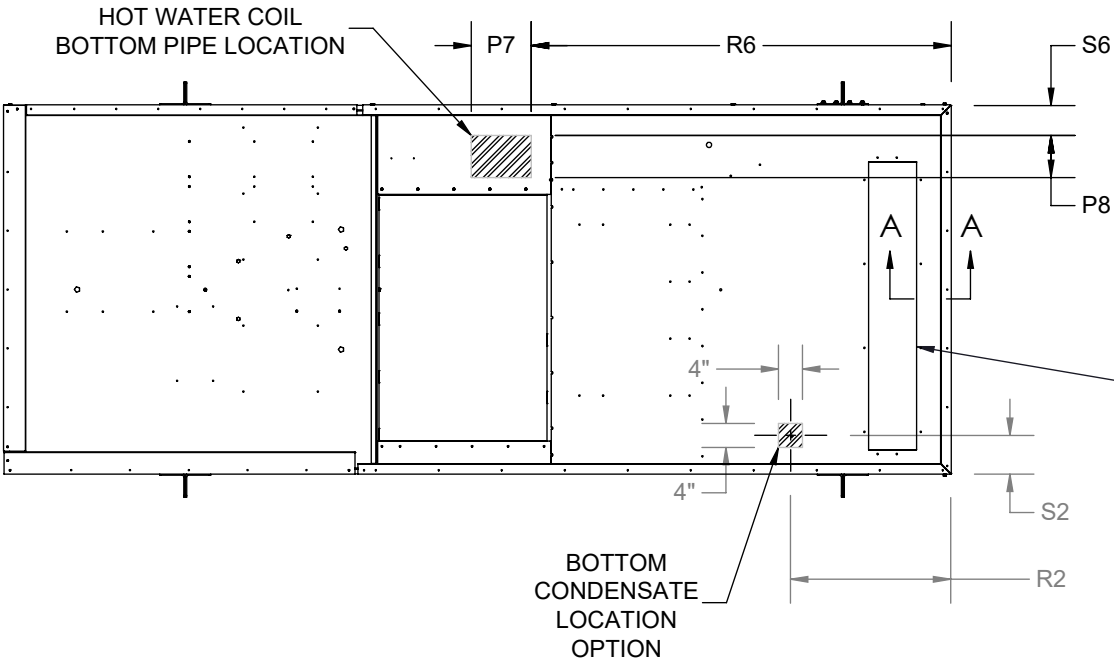
| UNIT CABINET SIZES | UNIT SIZE (TONS) | A | B | C |
|--------------------|------------------|--------|--------|--------|
| 50 | 08 | 18 7/8 | 30 3/8 | N/A |
| | 10 | 18 7/8 | 30 3/8 | N/A |
| | 12 | 18 7/8 | 30 3/8 | N/A |
| | 15 | 18 7/8 | 30 3/8 | N/A |
| 82 | 20 | 38 1/4 | 33 3/8 | 61 1/8 |
| | 25 | 38 1/4 | 33 3/8 | 61 1/8 |
| | 30 | 38 1/4 | 33 3/8 | 61 1/8 |

GENERAL NOTES AS REFERENCED BY INDIVIDUAL SHEETS:

- 1
- PORTION OF SECTIONED OR DETAILED DRAWING HAS BEEN OMITTED FOR CLARITY.
- 2
- VIEW IS FOR PICTORIAL PURPOSES. REFER TO PAGE 1 FOR UNIT TYPE SPECIFIC VIEW.
- 3
- GAS HEAT OPTION SHOWN.
- 4
- 15 TON UNIT SHOWN. CONDENSER FAN QUANTITY MAY VARY BY TONNAGE.
- 5
- SHOWN WITH RETURN AIR OPTION.

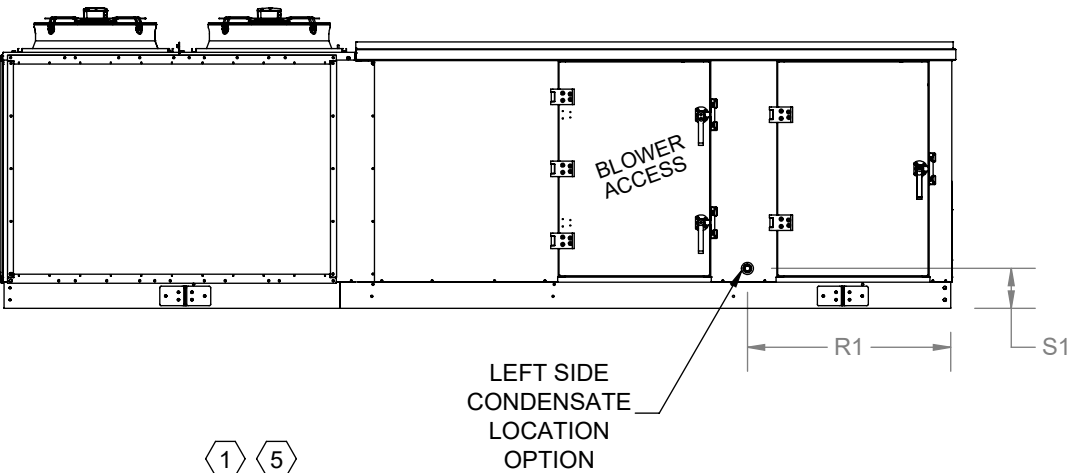
| | | | | | |
|---|---|--|--|--|--|
| <p>Desert Aire has a policy of continuous product and quality improvement. Specifications and dimensions are subject to change without notice. This drawing and information contained herein are the exclusive property of the Desert Aire Corporation. Any use detrimental to the interests of Desert Aire is prohibited.</p> <p>ALL DIMENSIONS ARE IN INCHES TOLERANCE ± 1/8"</p> | <p>All Dimensions in Inches All Angles 90° All outside corners 0.125" fillet Unless Otherwise Specified</p> | <p>Tolerance Unless Otherwise Specified</p> <p>X.X ±.125 X.XX ±.060 X.XXX ±.030 Angles ±1°</p> | |  <p>N120 W18485 FREISTADT RD GERMANTOWN, WI 53022 Tel: (262) 946-7400 Fax: (262) 946-7401</p> | |
| |  | <p>Drawn</p> <p>EAC</p> | <p>Date Released</p> <p>10/16/2020</p> | | <p>Description</p> <p>GrowAire GA Pkgd</p> |
| | <p>Third Angle Projection</p> | <p>Sheet</p> <p>1/9</p> | <p>Page Title</p> <p>GENERAL ARRANGEMENT</p> | | |
| | <p>Part weight</p> | <p>Scale</p> <p>NTS</p> | <p>Rev.</p> <p>0</p> | | <p>Drawing Number</p> <p>G816-001</p> |

BOTTOM CUSTOMER CONNECTIONS
(VIEWED FROM ABOVE)

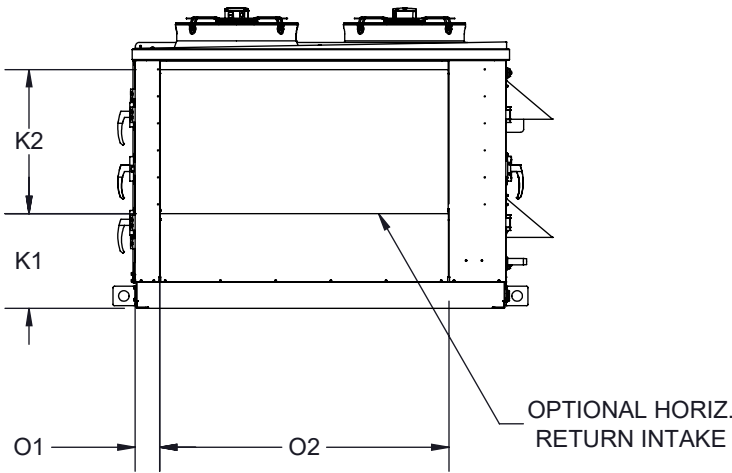


RETURN INTAKE
(REFER TO CURB
DETAILS GA SHEET
FOR DIMENSIONS)

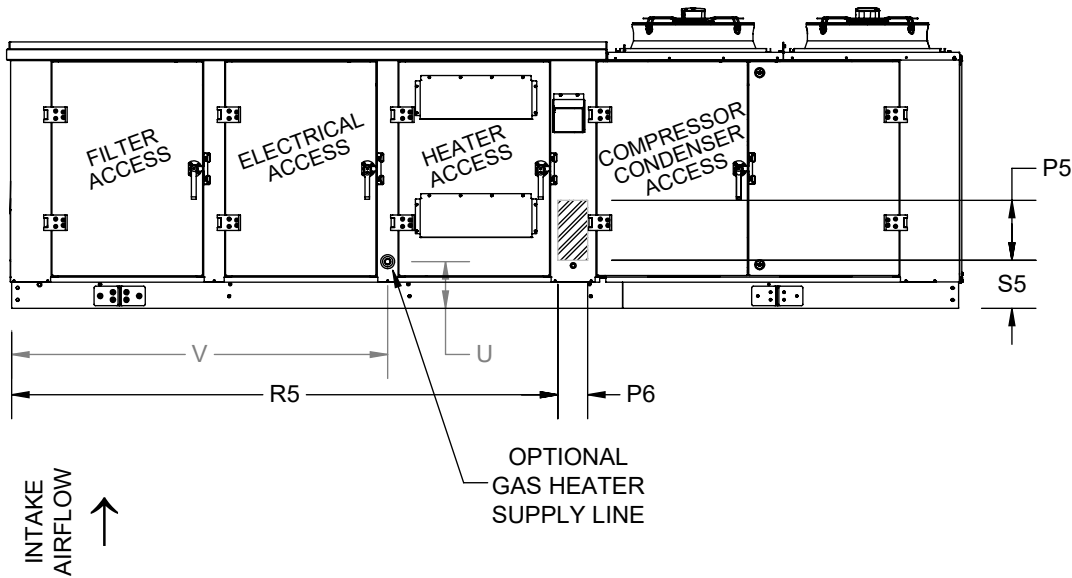
LEFT SIDE
CONNECTION
VIEW



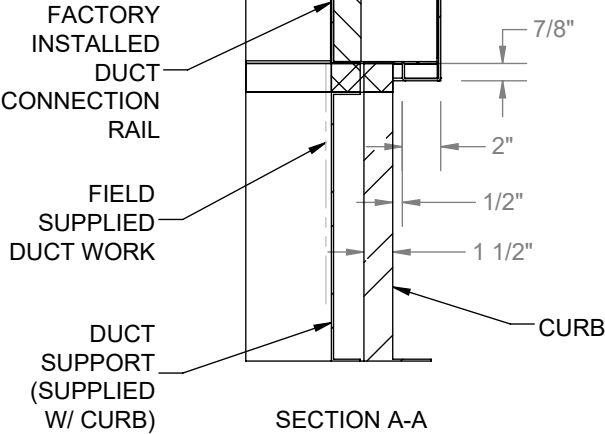
FRONT
CONNECTIONS
VIEW



RIGHT SIDE
CONNECTION
VIEW



1 5



SECTION A-A
SCALE 1 : 10

| AIR FLOW | UNIT CABINET SIZES | UNIT SIZE (TONS) | K1 | K2 | O1 | O2 | R1 | S1 | R2 | S2 | U | V | P7 | P8 | R6 | S6 | P5 | P6 | R5 | S5 |
|-----------|--------------------|------------------|--------|----|----|--------|--------|-------|--------|-------|-------|--------|----|----|----|-------|----|----|---------|----|
| DOWN FLOW | 50 | 08 | 16 3/8 | 24 | 4 | 48 1/4 | 34 | 6 5/8 | 26 3/4 | 6 3/8 | 7 3/4 | 62 7/8 | 10 | 7 | 70 | 5 | 10 | 6 | 91 | 8 |
| | | 10 | 16 3/8 | 24 | 4 | 48 1/4 | 34 | 6 5/8 | 26 3/4 | 6 3/8 | 7 3/4 | 62 7/8 | 10 | 7 | 70 | 5 | 10 | 6 | 91 | 8 |
| | | 12 | 16 3/8 | 24 | 4 | 48 1/4 | 34 | 6 5/8 | 26 3/4 | 6 3/8 | 7 3/4 | 62 7/8 | 10 | 7 | 70 | 5 | 10 | 6 | 91 | 8 |
| | | 15 | 16 3/8 | 24 | 4 | 48 1/4 | 34 | 6 5/8 | 26 3/4 | 6 3/8 | 7 3/4 | 62 7/8 | 10 | 7 | 70 | 5 | 10 | 6 | 91 | 8 |
| DOWN FLOW | 82 | 20 | 20 1/8 | 32 | 4 | 80 1/8 | 27 7/8 | 8 5/8 | 33 3/4 | 6 5/8 | 8 3/4 | 81 3/4 | 12 | 8 | 84 | 4 1/2 | 8 | 8 | 117 1/4 | 20 |
| | | 25 | 20 1/8 | 32 | 4 | 80 1/8 | 27 7/8 | 8 5/8 | 33 3/4 | 6 5/8 | 8 3/4 | 81 3/4 | 12 | 8 | 84 | 4 1/2 | 8 | 8 | 117 1/4 | 20 |
| | | 30 | 20 1/8 | 32 | 4 | 80 1/8 | 27 7/8 | 8 5/8 | 33 3/4 | 6 5/8 | 8 3/4 | 81 3/4 | 12 | 8 | 84 | 4 1/2 | 8 | 8 | 117 1/4 | 20 |

CUSTOMER CONNECTION LINE SIZE (in.)

| UNIT SIZE | 8 TONS | 10 TONS | 12 TONS | 15 TONS | 20 TONS | 25 TONS | 30 TONS |
|------------------|--------|---------|---------|---------|---------|---------|---------|
| CONDENSATE (PVC) | 3/4 | 3/4 | 3/4 | 3/4 | 1 1/2 | 1 1/2 | 1 1/2 |
| HOT WATER COIL | 1 5/8 | 1 5/8 | 1 5/8 | 1 5/8 | 2 1/8 | 2 1/8 | 2 1/8 |
| GAS (MNPT) | 3/4 | 3/4 | 3/4 | 3/4 | 1 | 1 | 1 |

NOTES:
REFER TO SHEET 1 FOR GENERAL NOTES.

Desert Aire has a policy of continuous product and quality improvement. Specifications and dimensions are subject to change without notice. This drawing and information contained herein are the exclusive property of the Desert Aire Corporation. Any use detrimental to the interests of Desert Aire is prohibited.

ALL DIMENSIONS ARE IN INCHES
TOLERANCE $\pm 1/8"$

All Dimensions in Inches
All Angles 90°
All outside corners 0.125" fillet
Unless Otherwise Specified



Third Angle Projection

Part weight

Tolerance Unless Otherwise Specified
X.X $\pm .125$
X.XX $\pm .060$
X.XXX $\pm .030$
Angles $\pm 1^\circ$

Drawn EAC Date Released 10/16/2020

Sheet 2/9

Scale NTS Rev. 0



N120 W18485 FREISTADT RD
GERMANTOWN, WI 53022
Tel: (262) 946-7400
Fax: (262) 946-7401

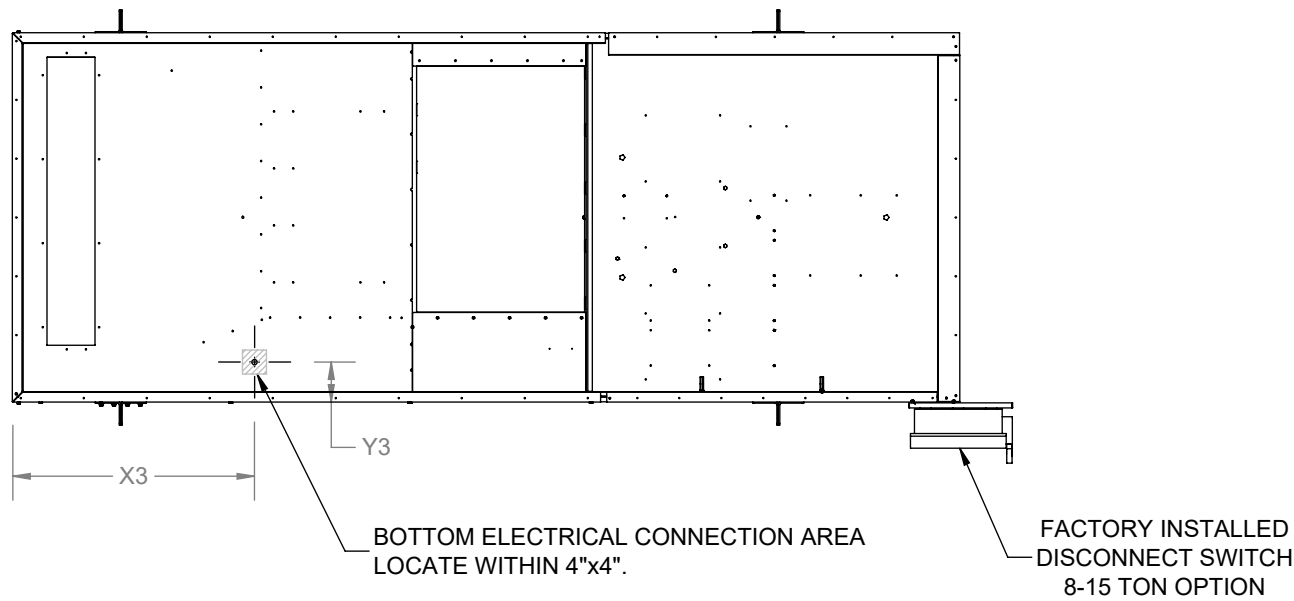
GrowAire GA Pkgd

Page Title CUSTOMER INTERFACE GA

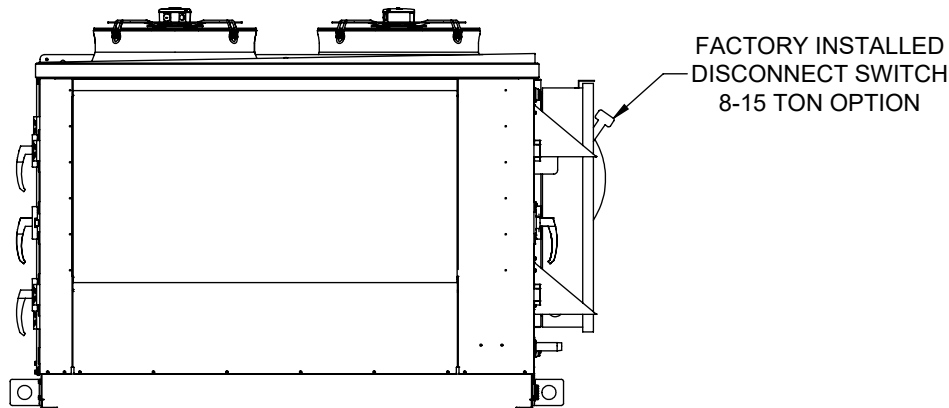
Drawing Number G816-001

TOP VIEW BOTTOM
CUSTOMER CONNECTIONS

1

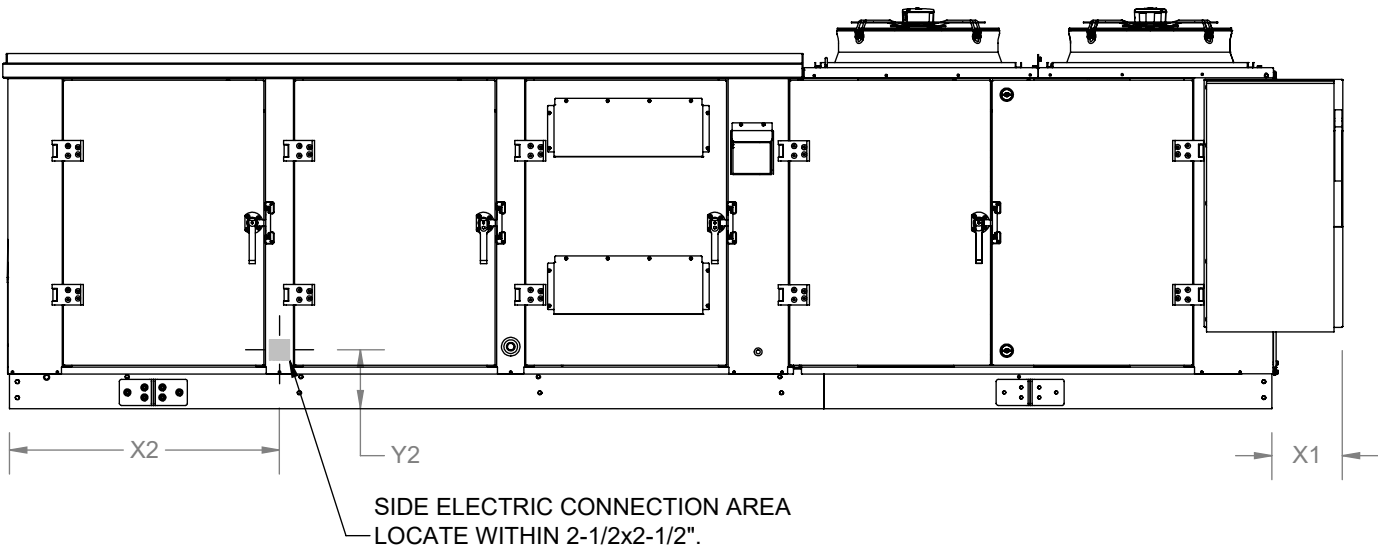


ELECTRICAL SIDE
CONNECTIONS
FRONT VIEW



ELECTRICAL SIDE
CONNECTIONS
SIDE VIEW

3



| DISCONNECT RATING AMPS | X1 |
|---------------------------|-------|
| 30 | 1 7/8 |
| 60 | 1 7/8 |
| 100 | 1 7/8 |
| 200 | 8 3/4 |

| AIR FLOW | UNIT CABINET SIZES | UNIT SIZE (TONS) | X2 | Y2 | X3 | Y3 |
|--------------|--------------------------|---------------------|--------|-------|--------|-------|
| DOWN FLOW | 50 | 08 | 34 | 7 1/4 | 40 3/8 | 6 1/2 |
| | | 10 | 34 | 7 1/4 | 40 3/8 | 6 1/2 |
| | | 12 | 34 | 7 1/4 | 40 3/8 | 6 1/2 |
| | | 15 | 34 | 7 1/4 | 40 3/8 | 6 1/2 |
| DOWN FLOW | 82 | 20 | 41 1/2 | 8 3/4 | 51 3/8 | 6 5/8 |
| | | 25 | 41 1/2 | 8 3/4 | 51 3/8 | 6 5/8 |
| | | 30 | 41 1/2 | 8 3/4 | 51 3/8 | 6 5/8 |

Desert Aire has a policy of continuous product and quality improvement. Specifications and dimensions are subject to change without notice. This drawing and information contained herein are the exclusive property of the Desert Aire Corporation. Any use detrimental to the interests of Desert Aire is prohibited.

All Dimensions in Inches
All Angles 90°
All outside corners 0.125" fillet
Unless Otherwise Specified

Tolerance Unless
Otherwise Specified
X.X ±.125
X.XX ±.060
X.XXX ±.030
Angles ±1°



N120 W18485 FREISTADT RD
GERMANTOWN, WI 53022
Tel: (262) 946-7400
Fax: (262) 946-7401



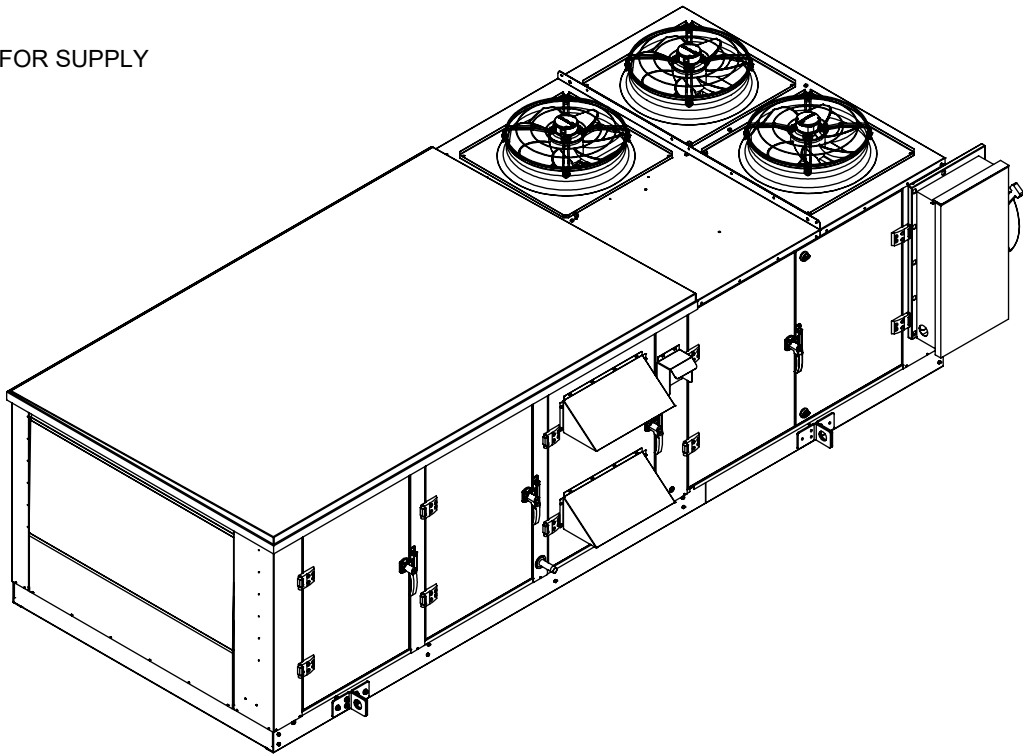
Third Angle Projection

Part weight

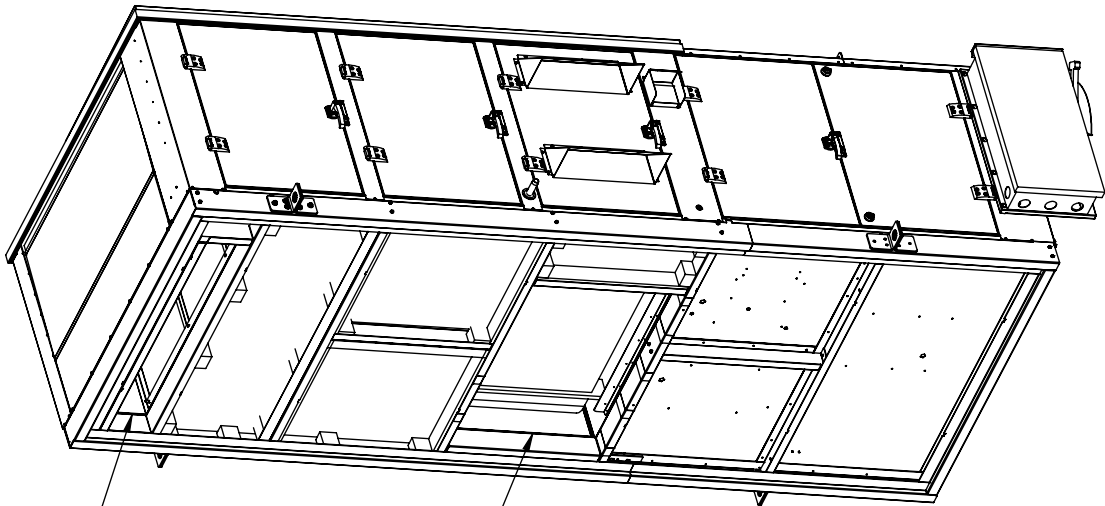
| | | |
|---------------------|------------------------------------|--|
| Drawn EAC | Date Released 10/16/2020 | Description GrowAire GA Pkgd |
| Sheet | 3/9 | Page Title ELECTRICAL INTERFACE DETAIL |
| Scale NTS | Rev. 0 | Drawing Number G816-001 |

ALL DIMENSIONS ARE IN INCHES
TOLERANCE ± 1/8"

NOTES:
REFER TO SHEET 1 FOR GENERAL NOTES.
WEIGHTS SHOWN REFLECT FULLY OPTIONED
ESTIMATED UNIT WEIGHT.
REFER TO CURB DETAILS GA SHEETS FOR SUPPLY
DUCT DIMENSION AND LOCATIONS.



DISCHARGE RETURN VIEW 2 3 4



RETURN INTAKE
(REFER TO CURB
DETAILS GA SHEET
FOR DIMENSIONS)

SUPPLY DISCHARGE
(REFER TO CURB
DETAILS GA SHEET
FOR DIMENSIONS)

| UNIT CABINET SIZES | UNIT SIZE (TONS) | DOWN DISCHARGE, DOWN RETURN | FOR 1-GAS HEATER ADD (LBS) | FOR 2-GAS HEATER ADD (LBS) | FOR ELECTRIC HEATER ADD (LBS) | FILTER QTY | FILTER SIZE |
|--------------------------|---------------------|--------------------------------|----------------------------------|----------------------------------|-------------------------------------|---------------|----------------|
| | | ESTIMATED BASE WEIGHT (LBS) | | | | | |
| 50 | 08 | 2184 | 345 | NA | 170 | 6 | 20x16x4 |
| | 10 | 2286 | 345 | NA | 170 | 6 | 20x16x4 |
| | 12 | 2321 | 345 | NA | 170 | 6 | 20x16x4 |
| | 15 | 2330 | 345 | NA | 170 | 6 | 20x16x4 |
| 82 | 20 | 4193 | 487 | 598 | 240 | 8 | 24x20x4 |
| | 25 | 4244 | 487 | 598 | 240 | 8 | 24x20x4 |
| | 30 | 4710 | 487 | 598 | 240 | 8 | 24x20x4 |

NOTE: TO CALCULATE THE UNIT WEIGHT ADD THE BASE WEIGHT TO THE
CORRECT HEATER OPTION WEIGHT (DO NOT COMBINE HEATERS).

Desert Aire has a policy of continuous product and quality improvement. Specifications and dimensions are subject to change without notice. This drawing and information contained herein are the exclusive property of the Desert Aire Corporation. Any use detrimental to the interests of Desert Aire is prohibited.

All Dimensions in Inches
All Angles 90°
All outside corners 0.125" fillet
Unless Otherwise Specified

Third Angle Projection

ALL DIMENSIONS ARE IN INCHES
TOLERANCE ± 1/8"

Tolerance Unless Otherwise Specified
X.X ±.125
X.XX ±.060
X.XXX ±.030
Angles ±1°

Drawn
EAC

Date Released
10/16/2020

Description
GrowAire GA Pkgd

Sheet
4/9

Scale
NTS

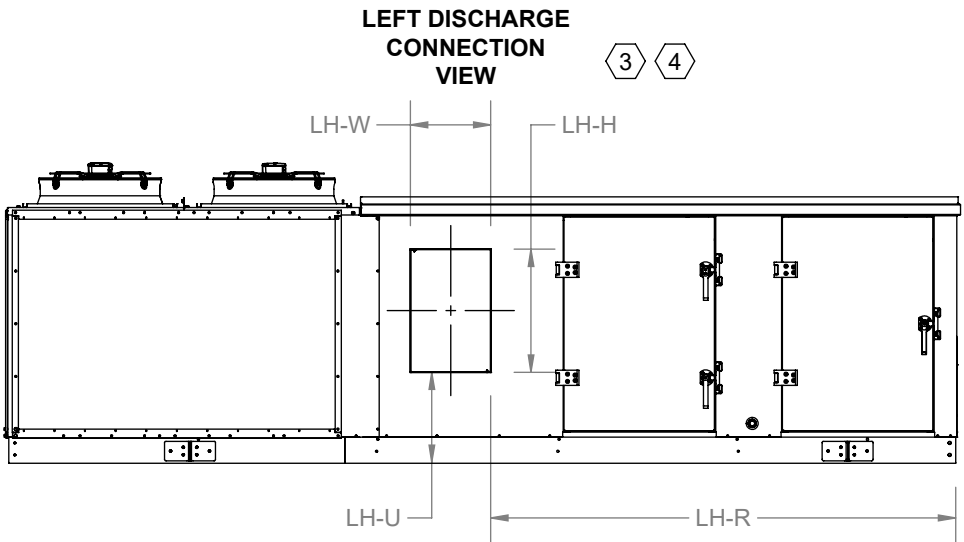
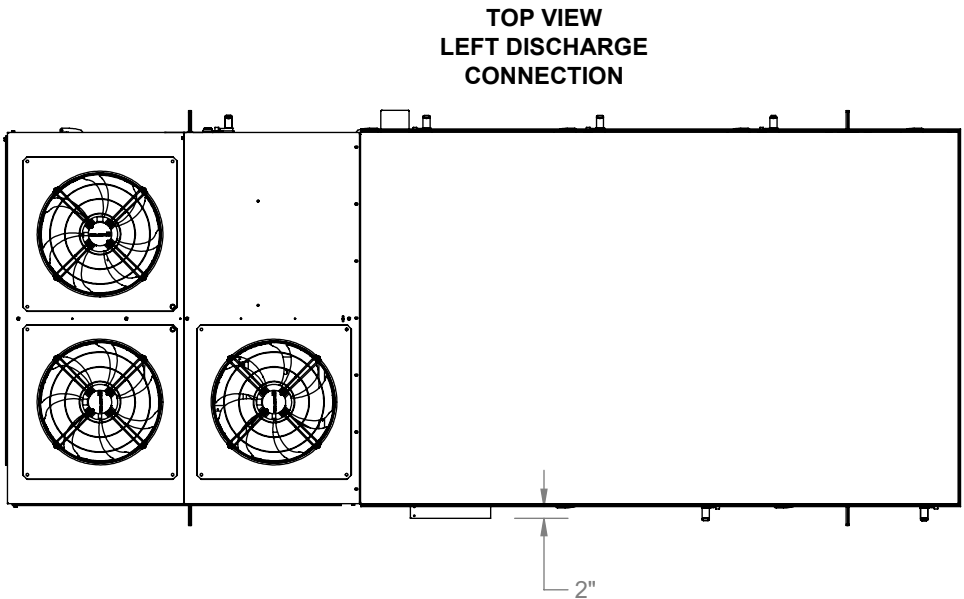
Part weight

Rev.
0

Drawing Number
G816-001

N120 W18485 FREISTADT RD
GERMANTOWN, WI 53022
Tel: (262) 946-7400
Fax: (262) 946-7401

Page Title
DOWN DISCHARGE GA



| UNIT CABINET SIZES | UNIT SIZE (TONS) | SIDE SUPPLY DISCHARGE (in.) | | | |
|--------------------------|---------------------|-----------------------------|--------|--------|--------|
| | | LH-W | LH-H | LH-U | LH-R |
| 50 | 08 | 13 3/8 | 20 1/2 | 15 1/8 | 77 1/2 |
| | 10 | 13 3/8 | 20 1/2 | 15 1/8 | 77 1/2 |
| | 12 | 13 3/8 | 20 1/2 | 15 1/8 | 77 1/2 |
| | 15 | 13 3/8 | 20 1/2 | 15 1/8 | 77 1/2 |
| 82 | 20 | 20 1/8 | 40 1/8 | 13 1/4 | 102 |
| | 25 | 20 1/8 | 40 1/8 | 13 1/4 | 102 |
| | 30 | 20 1/8 | 40 1/8 | 13 1/4 | 102 |

NOTES:
REFER TO SHEET 1 FOR GENERAL NOTES.

REFER TO CURB DETAILS GA SHEETS FOR RETURN
DUCT DIMENSION AND LOCATIONS.

THE STANDARD AND RETURN AIR CURBS SHOULD BE USED.

Desert Aire has a policy of continuous product and quality improvement. Specifications and dimensions are subject to change without notice. This drawing and information contained herein are the exclusive property of the Desert Aire Corporation. Any use detrimental to the interests of Desert Aire is prohibited.

ALL DIMENSIONS ARE IN INCHES
TOLERANCE $\pm 1/8"$

All Dimensions in Inches
All Angles 90°
All outside corners 0.125" fillet
Unless Otherwise Specified

Third Angle Projection

Part weight

| | |
|--------------------------------------|---------------|
| Tolerance Unless Otherwise Specified | |
| X.X | $\pm .125$ |
| X.XX | $\pm .060$ |
| X.XXX | $\pm .030$ |
| Angles | $\pm 1^\circ$ |

| | | | | |
|-------|---------------|--|---|--|
| Drawn | Date Released | Description GrowAire GA Pkgd | | |
| EAC | 10/16/2020 | | | |
| Sheet | 5/9 | | | |
| Scale | NTS | Rev. | 0 | Page Title LEFT DISCHARGE GA |
| | | | | Drawing Number G816-001 |

N120 W18485 FREISTADT RD
GERMANTOWN, WI 53022
Tel: (262) 946-7400
Fax: (262) 946-7401

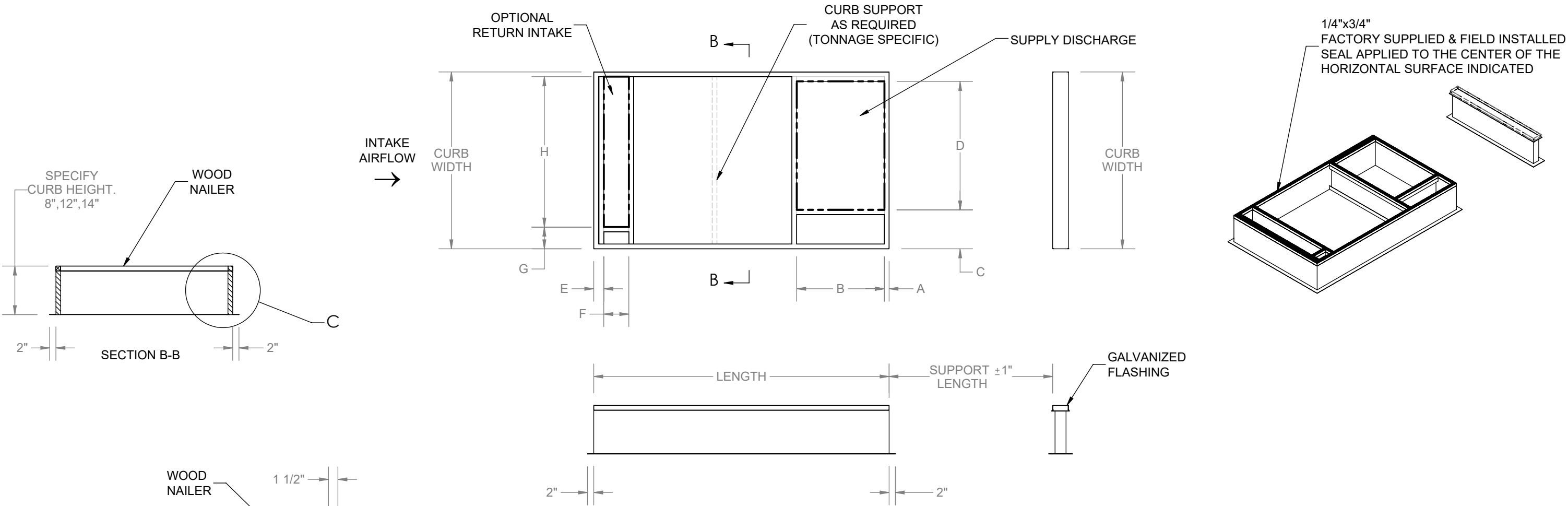
NOTES:
REFER TO SHEET 1 FOR GENERAL NOTES.

- 1. 18 GA. GALVANIZED STEEL CONSTRUCTION.
- 2. KNOCK DOWN CURB.
- 3. PRIME PAINTED.
- 4. PRESSURE TREATED 2X2 WOOD NAILER.
- 5. 1-1/2" THICK 3LB/FT³ FIBERGLASS PERIMETER INSULATION.
- 6. INTERNAL ANGLE REINFORCEMENT.


| UNIT CABINET SIZES | UNIT SIZE (TONS) | 2 PIECE CURB | | | | | SUPPLY DISCHARGE (in.) | | | | RETURN INTAKE (in.) | | | |
|--------------------------|---------------------|----------------------|-------------------|----------------|-----------------|-------------------------|------------------------|----|--------|----|---------------------|----|-------|----|
| | | CURB P/N STANDARD | CURB P/N W/ RA | WIDTH (in.) | LENGTH (in.) | SUPPORT LENGTH (in.) | A | B | C | D | E | F | G | H |
| 50 | 08 | CB08MPC105-XX2 | CB08MPF105-XX2 | 56 1/2 | 94 1/4 | 52 1/4 | 1 1/2 | 28 | 12 1/2 | 41 | 3 1/4 | 8 | 7 | 48 |
| | 10 | CB10MPC105-XX2 | CB10MPF105-XX2 | 56 1/2 | 94 1/4 | 52 1/4 | 1 1/2 | 28 | 12 1/2 | 41 | 3 1/4 | 8 | 7 | 48 |
| | 12 | CB12MPC105-XX2 | CB12MPF105-XX2 | 56 1/2 | 94 1/4 | 52 1/4 | 1 1/2 | 28 | 12 1/2 | 41 | 3 1/4 | 8 | 7 | 48 |
| | 15 | CB15MPC105-XX2 | CB15MPF105-XX2 | 56 1/2 | 94 1/4 | 52 1/4 | 1 1/2 | 28 | 12 1/2 | 41 | 3 1/4 | 8 | 7 | 48 |
| 82 | 20 | CB20MPC105-XX2 | CB20MPF105-XX2 | 89 1/4 | 125 3/4 | 48 | 1 1/2 | 28 | 12 7/8 | 74 | 3 1/4 | 12 | 7 3/4 | 80 |
| | 25 | CB25MPC105-XX2 | CB25MPF105-XX2 | 89 1/4 | 125 3/4 | 48 | 1 1/2 | 28 | 12 7/8 | 74 | 3 1/4 | 12 | 7 3/4 | 80 |
| | 30 | CB30MPC105-XX2 | CB30MPF105-XX2 | 89 1/4 | 125 3/4 | 72 | 1 1/2 | 28 | 12 7/8 | 74 | 3 1/4 | 12 | 7 3/4 | 80 |

2-PC CURB TOP VIEW 1 5

ALL DIMENSIONS ARE FROM THE TOP OF THE CURB PERIMETER
(ROOF FLANGE OMITTED FOR CLARITY)



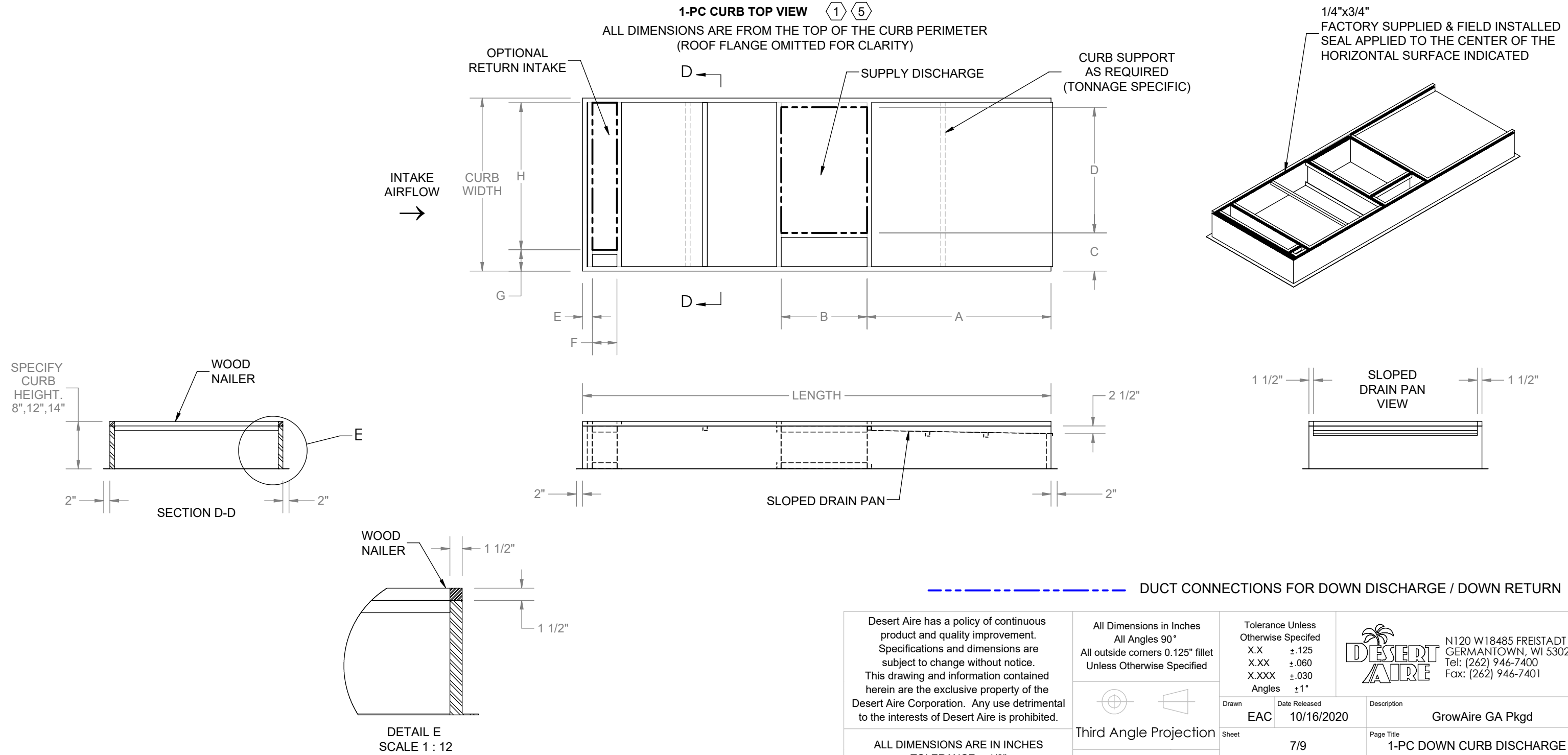
DUCT CONNECTIONS FOR DOWN DISCHARGE / DOWN RETURN

| | | | | | | | |
|---|--|---|--|--|--|--|--|
| Desert Aire has a policy of continuous product and quality improvement. Specifications and dimensions are subject to change without notice. This drawing and information contained herein are the exclusive property of the Desert Aire Corporation. Any use detrimental to the interests of Desert Aire is prohibited. | | All Dimensions in Inches All Angles 90° All outside corners 0.125" fillet Unless Otherwise Specified | | Tolerance Unless Otherwise Specified X.X ±.125 X.XX ±.060 X.XXX ±.030 Angles ±1° | |  N120 W18485 FREISTADT RD GERMANTOWN, WI 53022 Tel: (262) 946-7400 Fax: (262) 946-7401 | |
| Third Angle Projection | | Drawn EAC | | Date Released 10/16/2020 | | Description GrowAire GA Pkgd | |
| ALL DIMENSIONS ARE IN INCHES TOLERANCE ± 1/8" | | Sheet 6/9 | | Page Title 2-PC CURB DETAIL GA | | Drawing Number G816-001 | |
| Part weight | | Scale NTS | | Rev. 0 | | | |

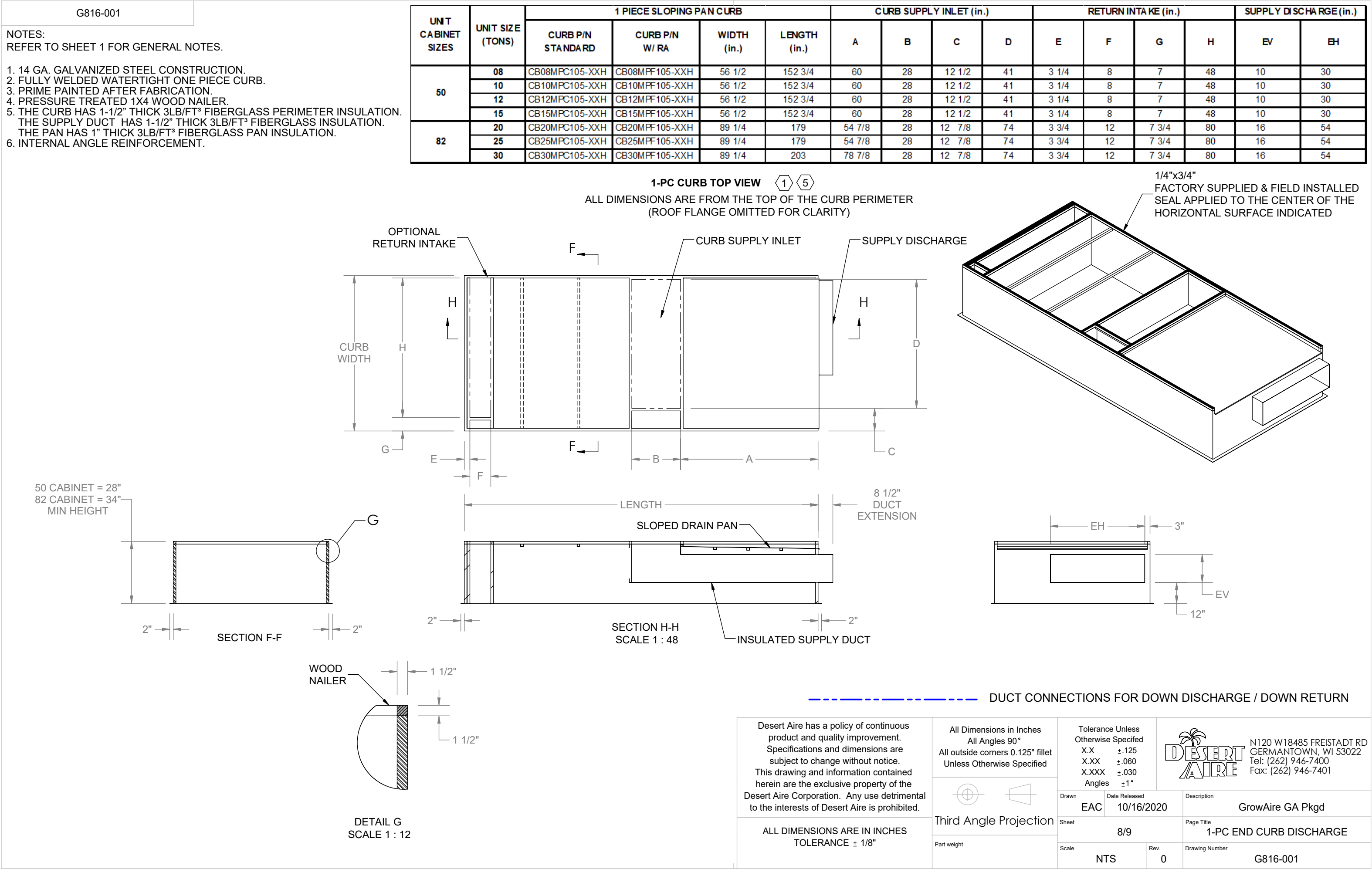
NOTES:
REFER TO SHEET 1 FOR GENERAL NOTES.

1. 14 GA. GALVANIZED STEEL CONSTRUCTION.
2. FULLY WELDED WATERTIGHT ONE PIECE CURB.
3. PRIME PAINTED AFTER FABRICATION.
4. PRESSURE TREATED 1X4 WOOD NAILER.
5. THE CURB HAS 1-1/2" THICK 3LB/FT³ FIBERGLASS PERIMETER INSULATION.
THE PAN ALSO HAS 1" THICK 3LB/FT³ FIBERGLASS PAN INSULATION.
6. INTERNAL ANGLE REINFORCEMENT.

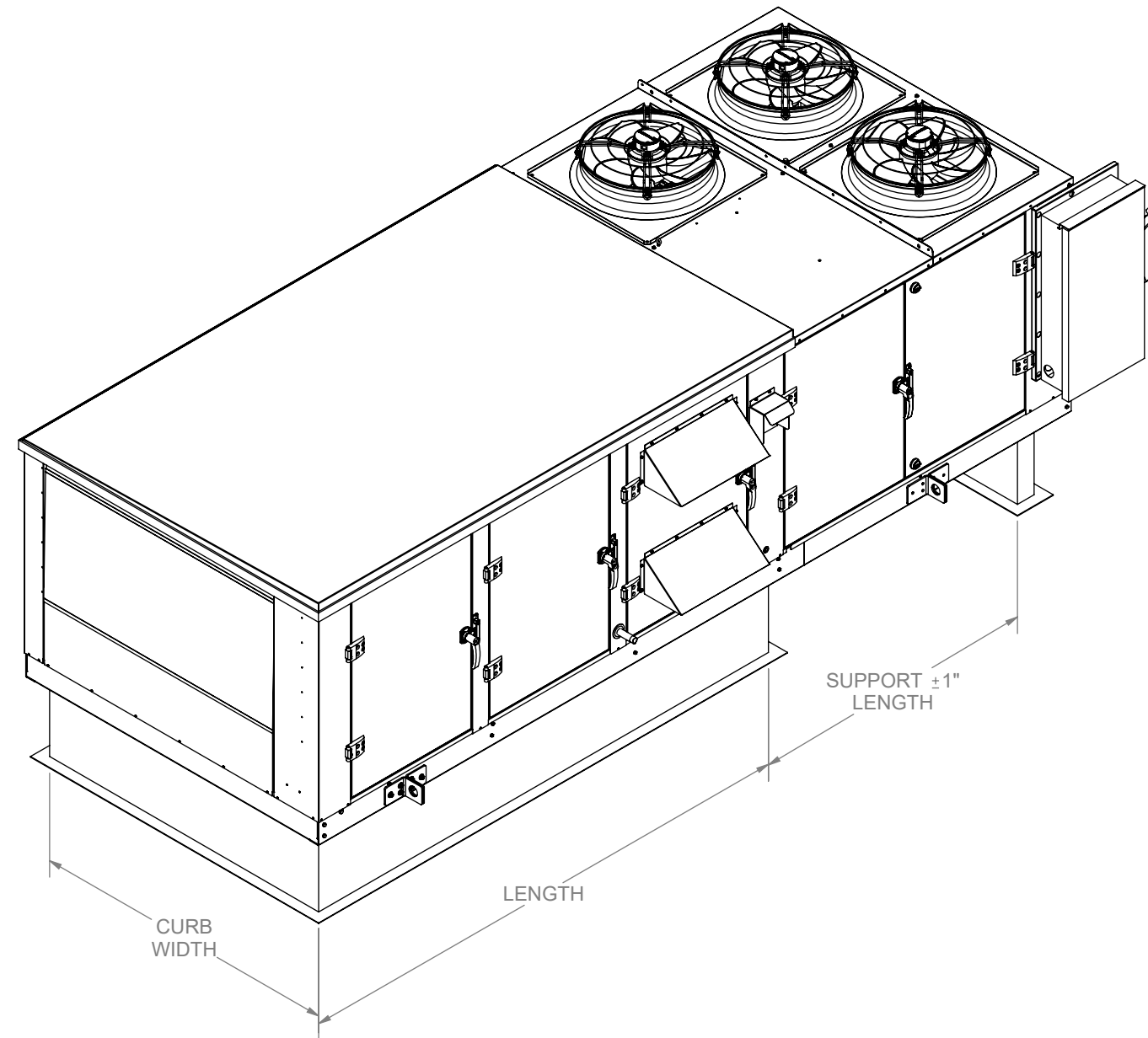
| UNIT CABINET SIZES | UNIT SIZE (TONS) | 1 PIECE SLOPING PAN CURB | | | | SUPPLY DISCHARGE (in.) | | | | RETURN INTAKE (in.) | | | |
|--------------------------|---------------------|--------------------------|-------------------|----------------|-----------------|------------------------|----|--------|----|---------------------|----|-------|----|
| | | CURB P/N STANDARD | CURB P/N W/ RA | WIDTH (in.) | LENGTH (in.) | A | B | C | D | E | F | G | H |
| 50 | 08 | CB08MPC105-XX1 | CB08MPF105-XX1 | 56 1/2 | 152 3/4 | 60 | 28 | 12 1/2 | 41 | 3 1/4 | 8 | 7 | 48 |
| | 10 | CB10MPC105-XX1 | CB10MPF105-XX1 | 56 1/2 | 152 3/4 | 60 | 28 | 12 1/2 | 41 | 3 1/4 | 8 | 7 | 48 |
| | 12 | CB12MPC105-XX1 | CB12MPF105-XX1 | 56 1/2 | 152 3/4 | 60 | 28 | 12 1/2 | 41 | 3 1/4 | 8 | 7 | 48 |
| | 15 | CB15MPC105-XX1 | CB15MPF105-XX1 | 56 1/2 | 152 3/4 | 60 | 28 | 12 1/2 | 41 | 3 1/4 | 8 | 7 | 48 |
| 82 | 20 | CB20MPC105-XX1 | CB20MPF105-XX1 | 89 1/4 | 179 | 54 7/8 | 28 | 12 7/8 | 74 | 3 3/4 | 12 | 7 3/4 | 80 |
| | 25 | CB25MPC105-XX1 | CB25MPF105-XX1 | 89 1/4 | 179 | 54 7/8 | 28 | 12 7/8 | 74 | 3 3/4 | 12 | 7 3/4 | 80 |
| | 30 | CB30MPC105-XX1 | CB30MPF105-XX1 | 89 1/4 | 203 | 78 7/8 | 28 | 12 7/8 | 74 | 3 3/4 | 12 | 7 3/4 | 80 |



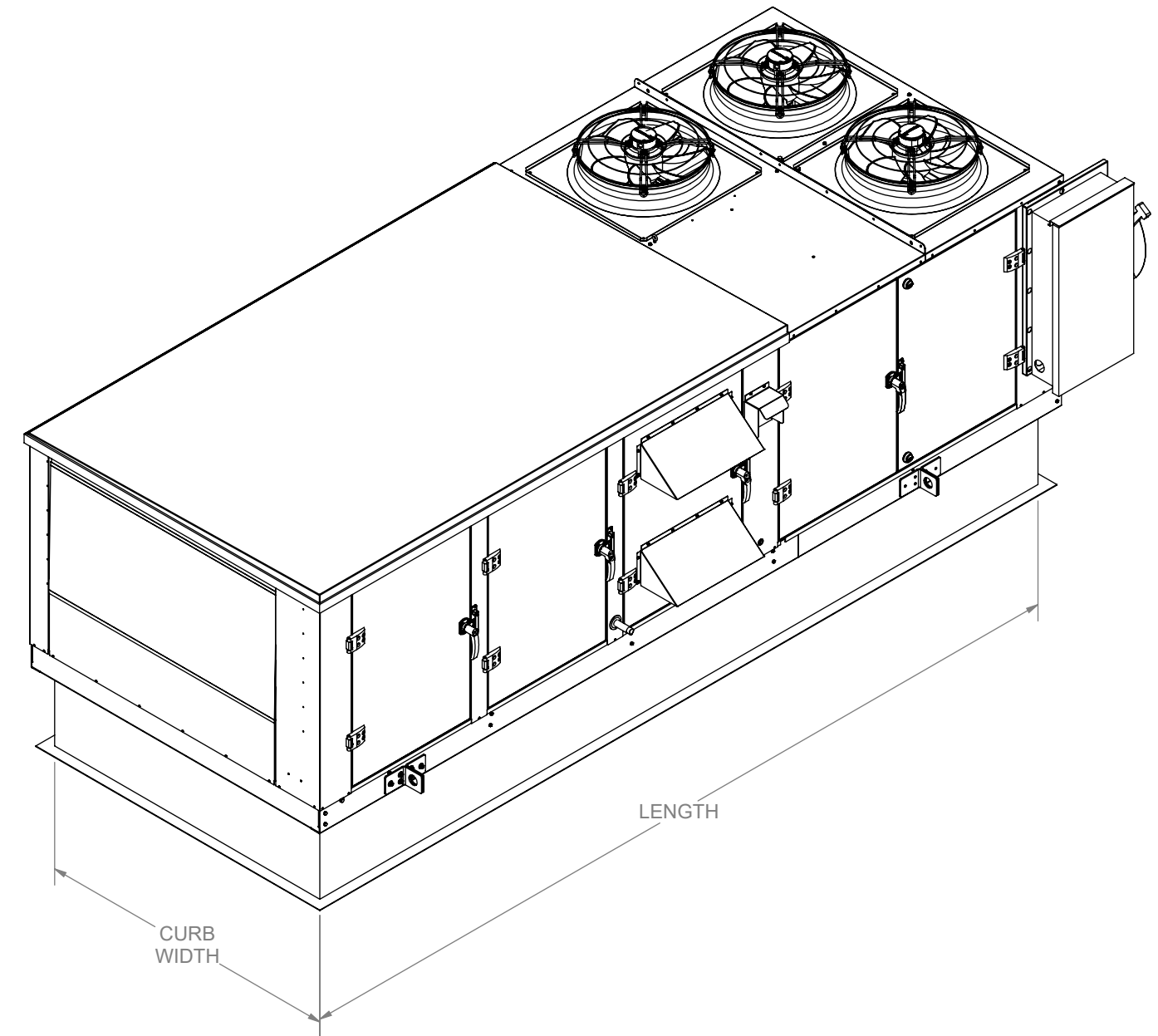
| | | | | | |
|--|---|---|---|---|--|
| <p>Desert Aire has a policy of continuous product and quality improvement. Specifications and dimensions are subject to change without notice. This drawing and information contained herein are the exclusive property of the Desert Aire Corporation. Any use detrimental to the interests of Desert Aire is prohibited.</p> | <p>All Dimensions in Inches All Angles 90° All outside corners 0.125" fillet Unless Otherwise Specified</p> | <p>Tolerance Unless Otherwise Specified X.X ±.125 X.XX ±.060 X.XXX ±.030 Angles ±1°</p> | <p> N120 W18485 FREISTADT RD GERMANTOWN, WI 53022 Tel: (262) 946-7400 Fax: (262) 946-7401</p> | | |
| | <p>Third Angle Projection</p> | <p>Drawn EAC</p> | | <p>Date Released 10/16/2020</p> | <p>Description GrowAire GA Pkgd</p> |
| | <p>Part weight</p> | <p>Sheet 7/9</p> | | <p>Page Title 1-PC DOWN CURB DISCHARGE</p> | |
| | <p>Scale NTS</p> | <p>Rev. 0</p> | | <p>Drawing Number G816-001</p> | |



TWO PIECE CURB DETAIL



ONE PIECE CURB DETAIL



Desert Aire has a policy of continuous product and quality improvement. Specifications and dimensions are subject to change without notice. This drawing and information contained herein are the exclusive property of the Desert Aire Corporation. Any use detrimental to the interests of Desert Aire is prohibited.

ALL DIMENSIONS ARE IN INCHES
TOLERANCE $\pm 1/8"$

All Dimensions in Inches
All Angles 90°
All outside corners 0.125" fillet
Unless Otherwise Specified



Third Angle Projection

Part weight

| | |
|---|-----------------|
| Tolerance Unless Otherwise Specified | |
| X.X | $\pm .125$ |
| X.XX | $\pm .060$ |
| X.XXX | $\pm .030$ |
| Angles | $\pm 1^{\circ}$ |

| | |
|-------|---------------|
| Drawn | Date Released |
| EAC | 10/16/2020 |

Sheet 9/9

Scale

NTS



N120 W18485 FREISTADT RD
GERMANTOWN, WI 53022
Tel: (262) 946-7400
Fax: (262) 946-7401

| | |
|-------------|------------------|
| Description | GrowAire GA Pkgd |
|-------------|------------------|

| | |
|------------|---------------|
| Page Title | CURB OVERVIEW |
|------------|---------------|

| | |
|----------------|----------|
| Drawing Number | G816-001 |
|----------------|----------|