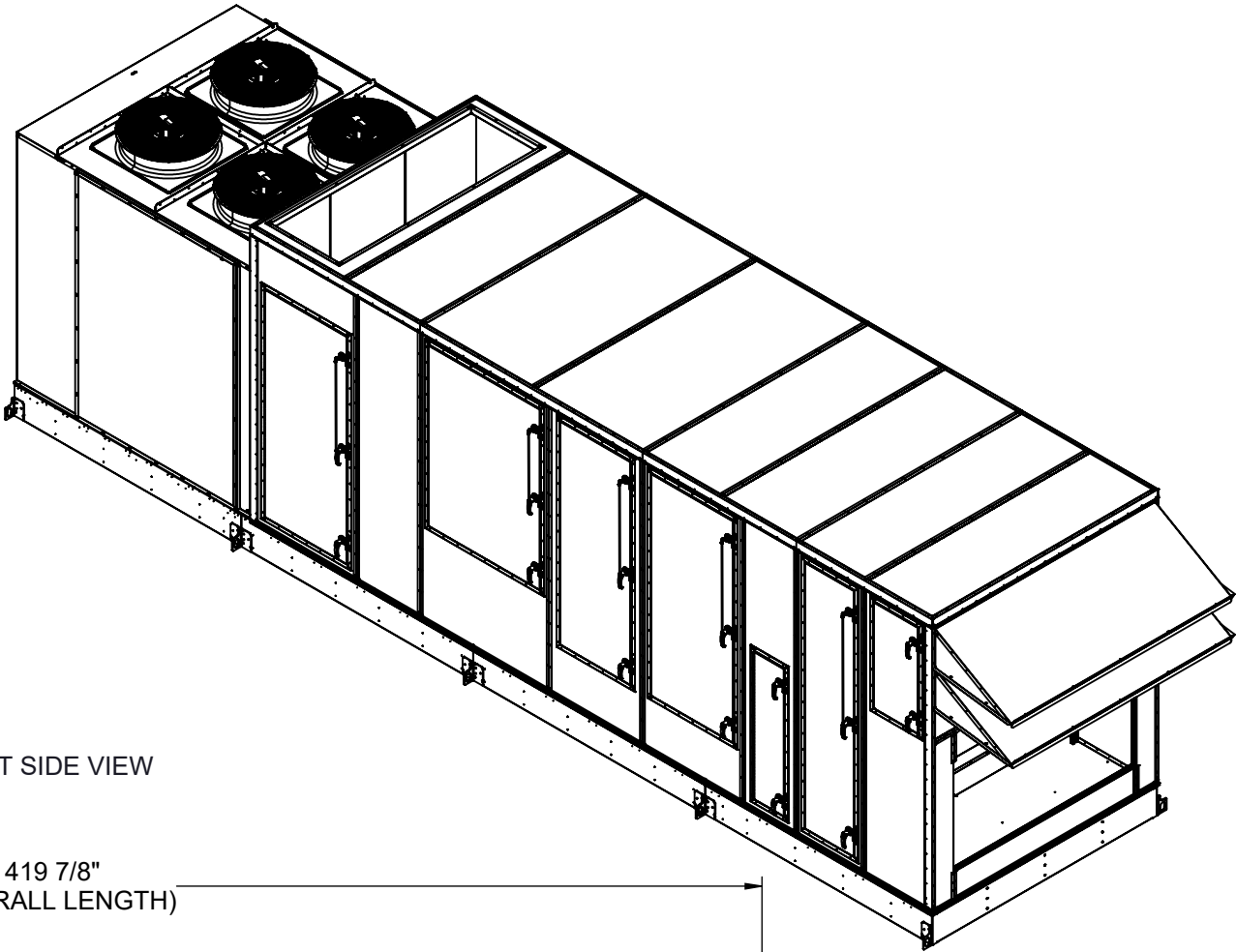
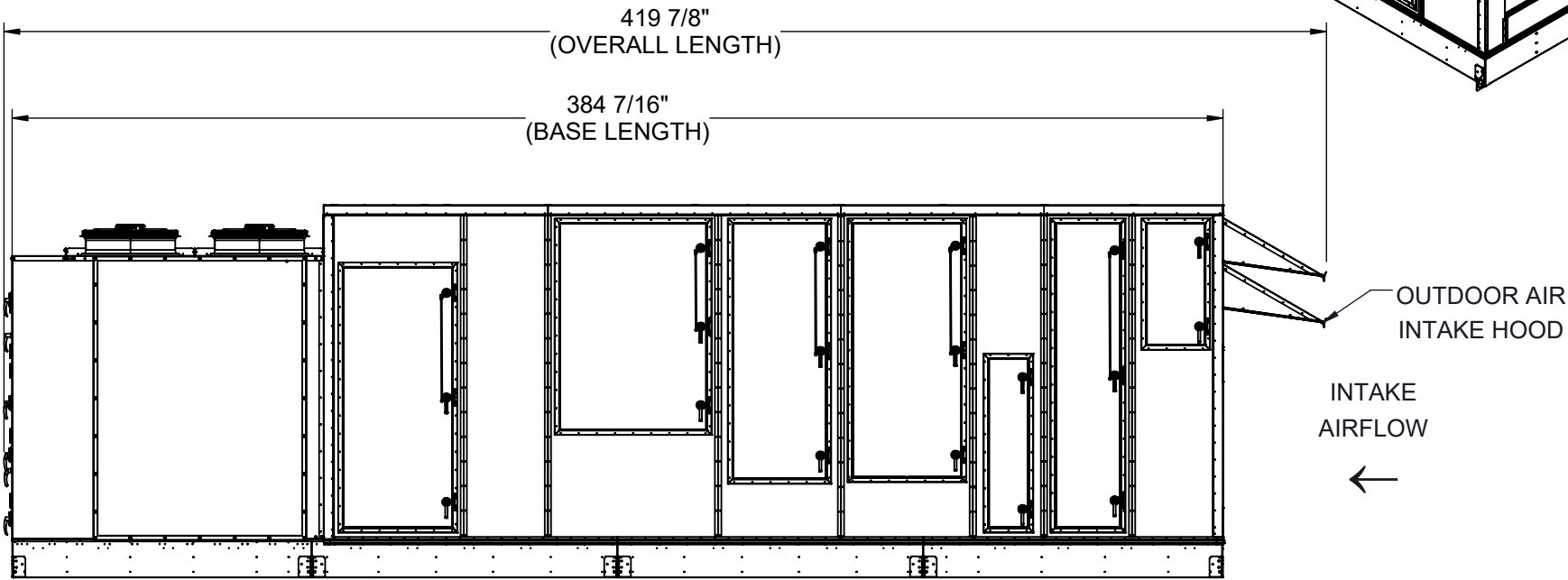
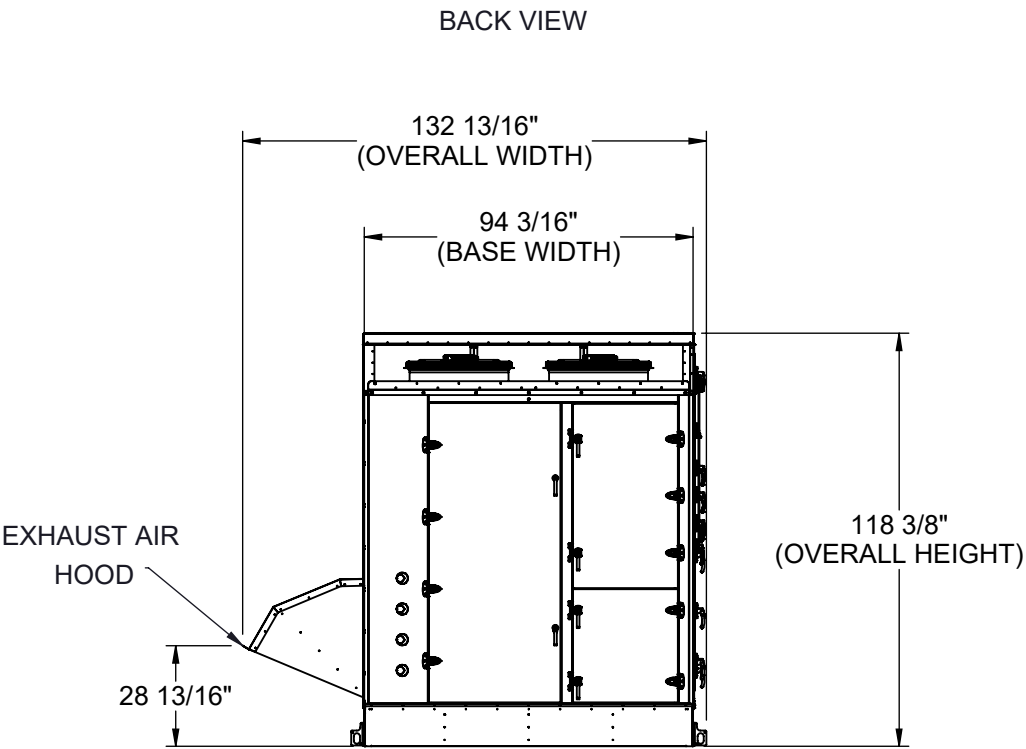


GENERAL NOTES FOR APPLICABLE SHEETS:

LEFT HAND ACCESS SHOWN IN ALL VIEWS
RIGHT HAND ACCESS OPTIONS LOCATED WITH SAME DIMENSIONS ON OPPOSITE SIDE UNLESS OTHERWISE SPECIFIED
WEIGHTS SHOWN REFLECT FULLY OPTIONED ESTIMATED UNIT WEIGHT



UNIT SIZE	ESTIMATED WEIGHT (lbs.)
45-50 TONS	16500

Desert Aire has a policy of continuous product and quality improvement. Specifications and dimensions are subject to change without notice. This drawing and information contained herein are the exclusive property of the Desert Aire Corporation. Any use detrimental to the interests of Desert Aire is prohibited.

ALL DIMENSIONS ARE IN INCHES
TOLERANCE $\pm 1/8"$

All Dimensions in Inches
All Angles 90°
All outside corners 0.125" fillet
Unless Otherwise Specified



Third Angle Projection

Part weight

Tolerance Unless Otherwise Specified
X.X $\pm .125$
X.XX $\pm .060$
X.XXX $\pm .030$
Angles $\pm 1^\circ$

Drawn
ASV
Date Released
1/19/2018

Sheet
1/8

Scale
NTS
Rev.
1



N120 W18485 FREISTADT RD
GERMANTOWN, WI 53022
Tel: (262) 946-7400
Fax: (262) 946-7401

Description
SP 40-50 TON PKG ELECT HEAT

Page Title
GENERAL ARRANGEMENT

Drawing Number
G1000-112

CUSTOMER CONNECTION LINE SIZE (in.)		
UNIT SIZE	45 TONS	50 TONS
CONDENSATE (PVC)	1 1/2	1 1/2
POOL WATER LINE CIRCUIT A (CPVC)	1	2
POOL WATER LINE CIRCUIT B (CPVC)	2	2

BOTTOM POOL WATER
CONNECTION LOCATION OPTION

(NO ORIENTATION CHANGE FOR RH OR LH ACCESS)

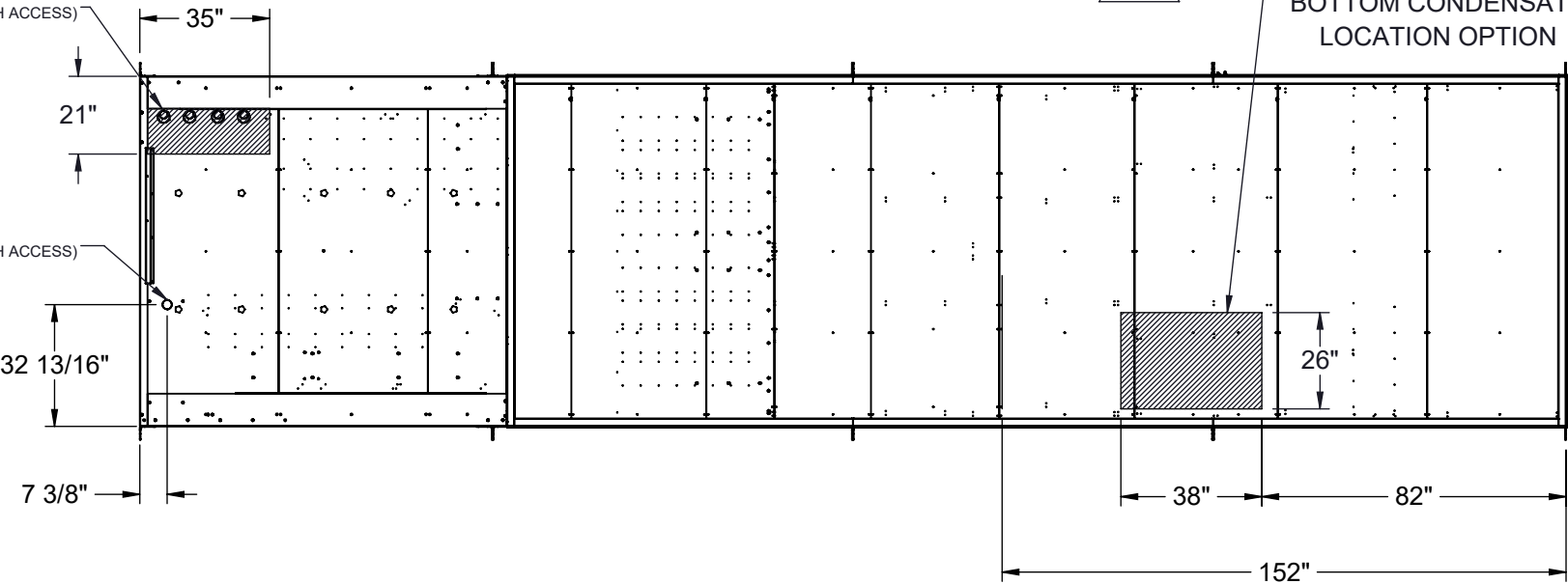
BOTTOM ELECTRICAL
LOCATION OPTION

(NO ORIENTATION CHANGE FOR RH OR LH ACCESS)

BOTTOM CUSTOMER CONNECTIONS
(LEFT HAND ACCESS SHOWN)
(VIEWED FROM ABOVE)



BOTTOM CONDENSATE
LOCATION OPTION



BACK CONNECTIONS VIEW

(NO ORIENTATION CHANGE FOR RH OR LH ACCESS)

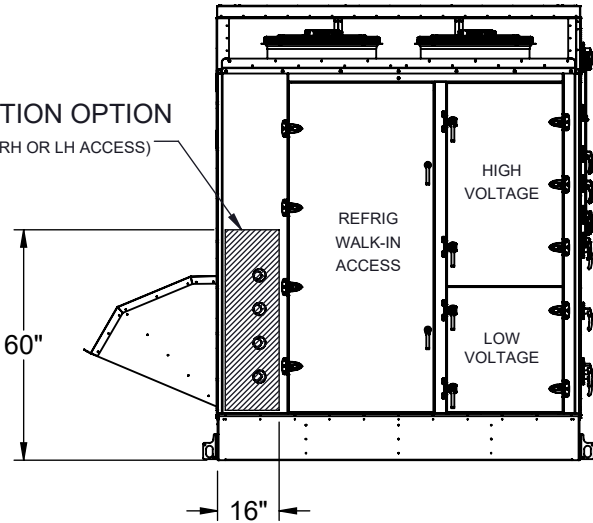
LEFT SIDE CONNECTION VIEW
(LEFT HAND ACCESS SHOWN)

SIDE ELECTRICAL
CONNECTION LOCATION OPTION

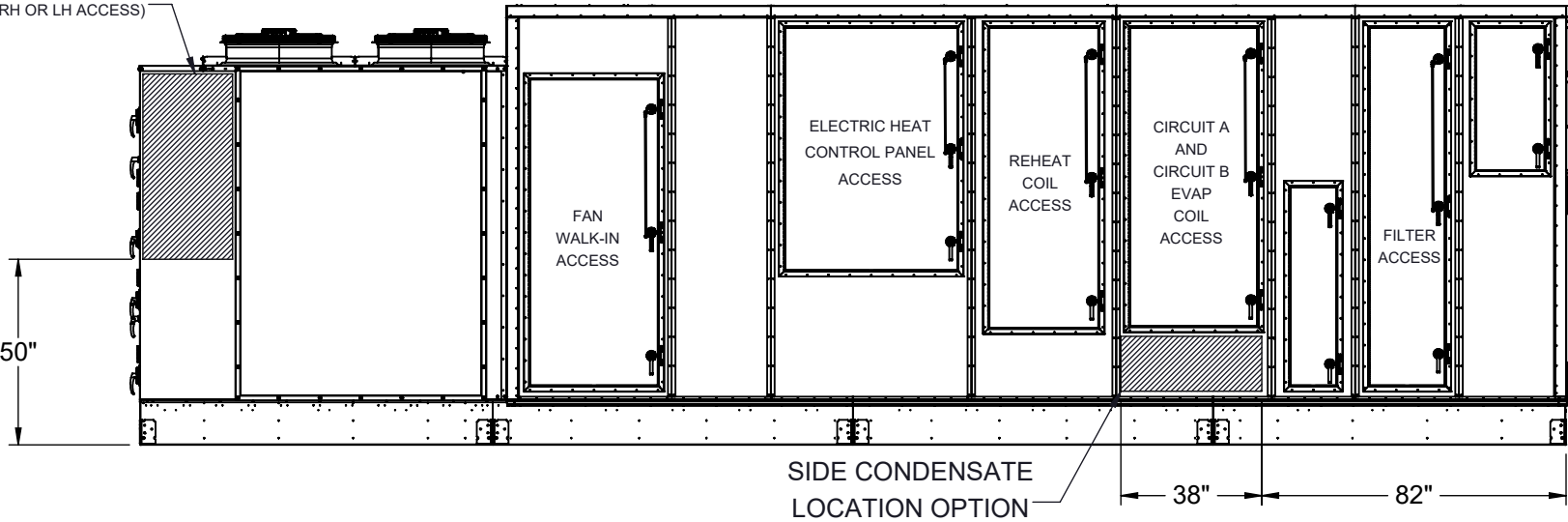
(NO ORIENTATION CHANGE FOR RH OR LH ACCESS)

BACK POOL WATER
CONNECTION LOCATION OPTION

(NO ORIENTATION CHANGE FOR RH OR LH ACCESS)



INTAKE
AIRFLOW



NOTES:
REFER TO SHEET 1 FOR GENERAL NOTES
LEFT HAND ACCESS SHOWN IN ALL VIEWS
RIGHT HAND ACCESS OPTIONS LOCATED WITH SAME DIMENSIONS ON OPPOSITE SIDE UNLESS OTHERWISE SPECIFIED



FILTER INFORMATION						
UNIT SIZE	OA QTY	OA SIZE	REPLACEMENT PART NUMBER	RA QTY	RA SIZE	REPLACEMENT PART NUMBER
45-50 TONS	10	18 X 24 X 4	870-056	10	18 X 24 X 4	870-056

Desert Aire has a policy of continuous product and quality improvement. Specifications and dimensions are subject to change without notice. This drawing and information contained herein are the exclusive property of the Desert Aire Corporation. Any use detrimental to the interests of Desert Aire is prohibited.

ALL DIMENSIONS ARE IN INCHES
TOLERANCE $\pm 1/8"$

All Dimensions in Inches
All Angles 90°
All outside corners 0.125" fillet
Unless Otherwise Specified



Third Angle Projection

Part weight

Tolerance Unless
Otherwise Specified
X.X $\pm .125$
X.XX $\pm .060$
X.XXX $\pm .030$
Angles $\pm 1^\circ$

Drawn
ASV
Date Released
1/19/2018

Sheet
2/8

Scale
NTS



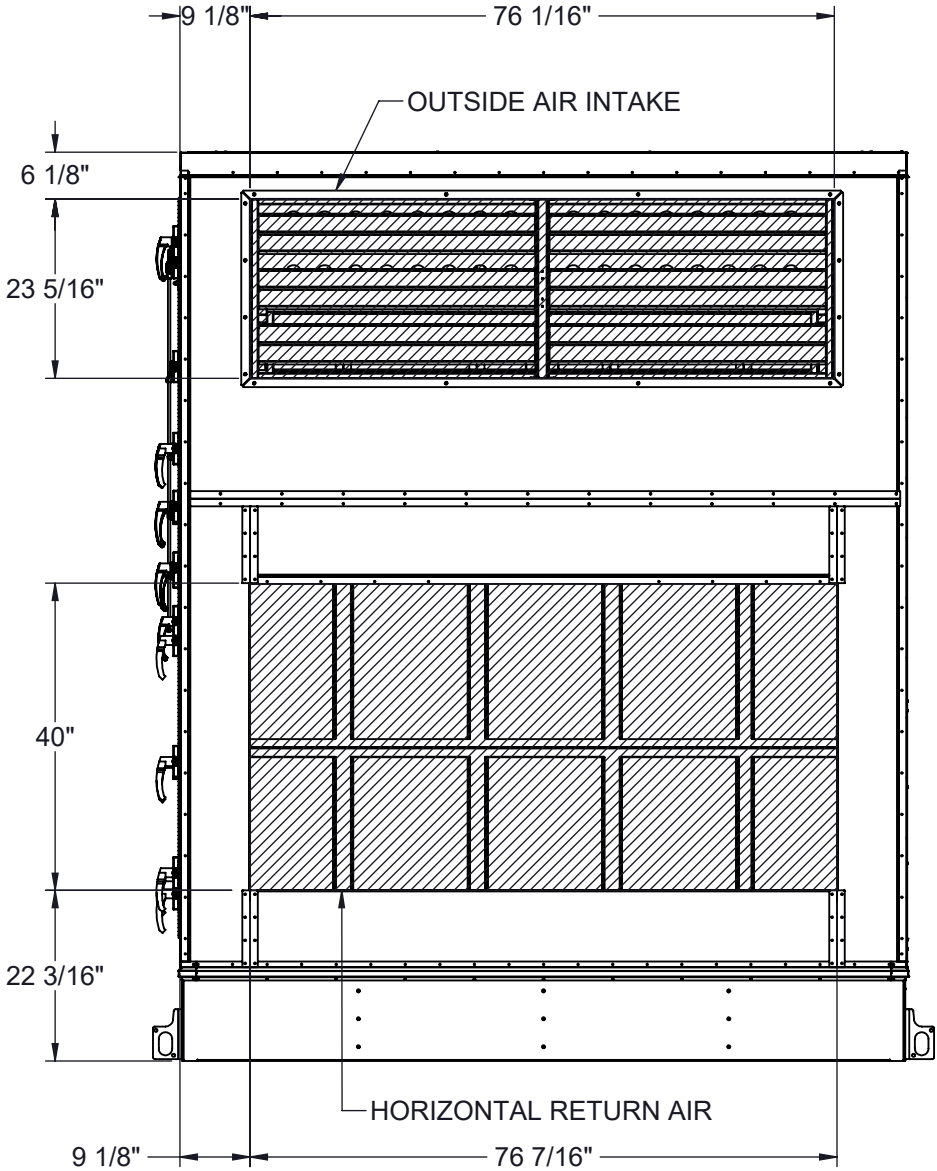
N120 W18485 FREISTADT RD
GERMANTOWN, WI 53022
Tel: (262) 946-7400
Fax: (262) 946-7401

Description
SP 40-50 TON PKG ELECT HEAT

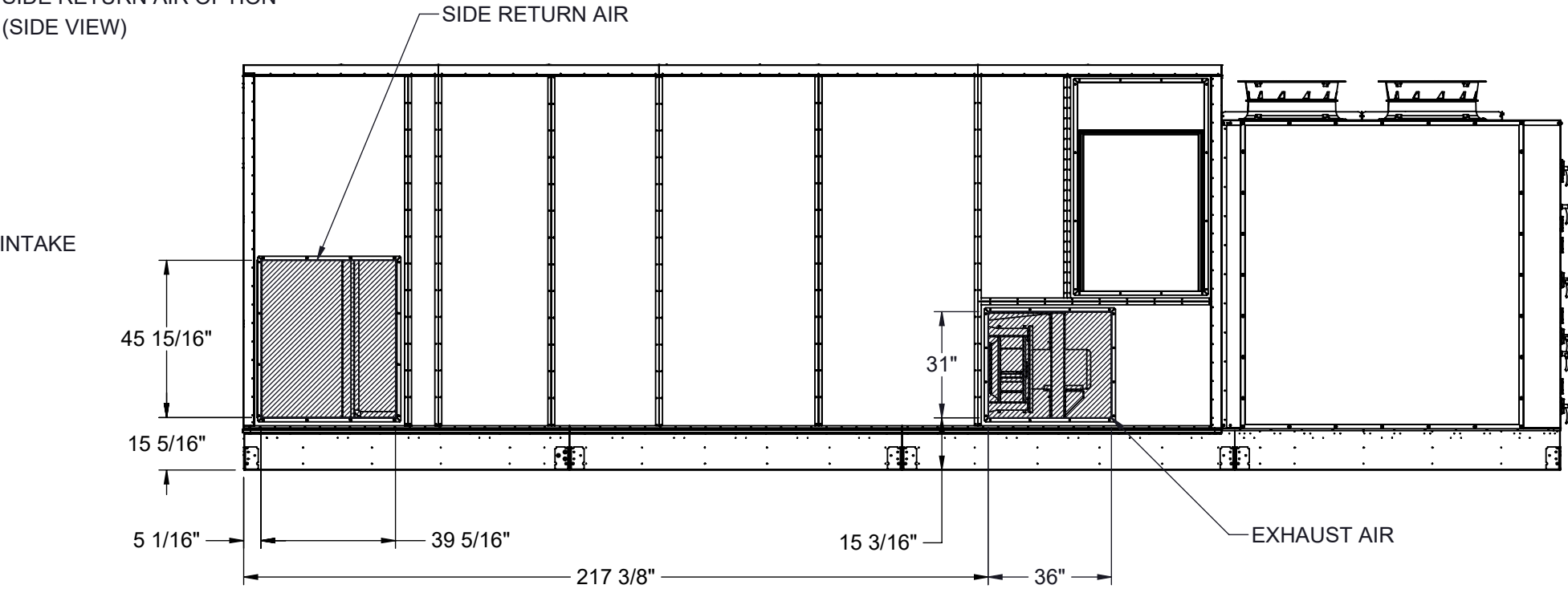
Page Title
CUSTOMER INTERFACE GA

Drawing Number
G1000-112

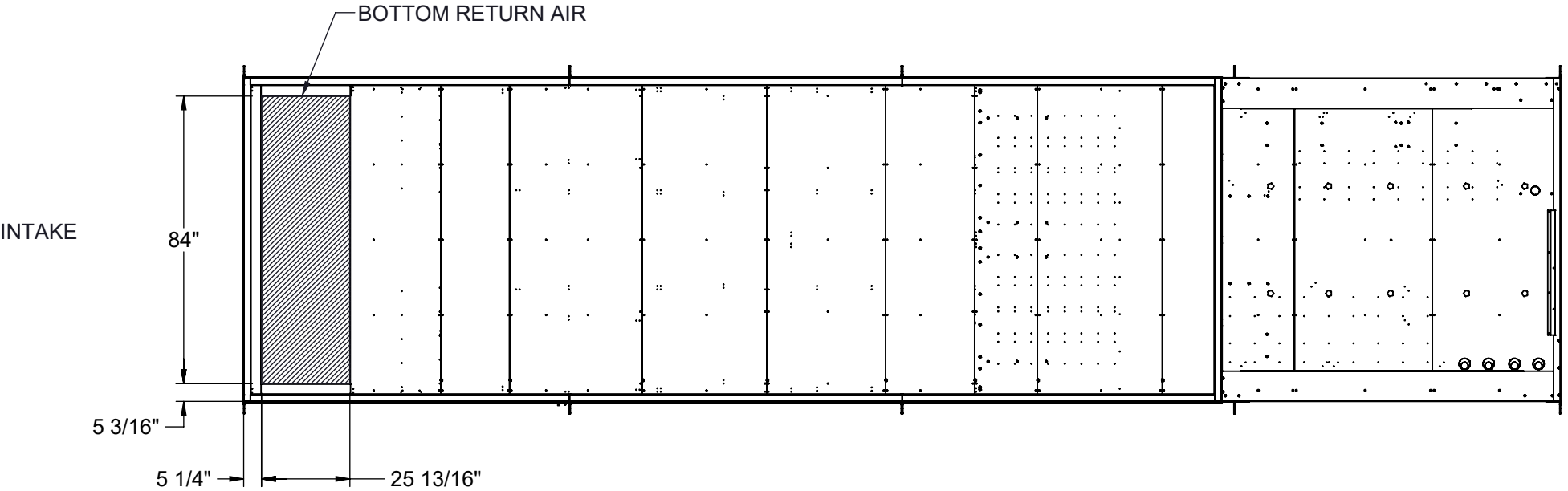
HORIZONTAL RETURN AIR OPTION
(INTAKE VIEW)



SIDE RETURN AIR OPTION
(SIDE VIEW)



BOTTOM RETURN AIR OPTION
(VIEW FROM ABOVE)



NOTES:
REFER TO SHEET 1 FOR GENERAL NOTES
HOODS REMOVED FOR CLARITY
ACCESS SIDE RETURN AIR OPTION WILL SHIFT FILTER SECTION DOORS TO NON-ACCESS SIDE
OUTSIDE AIR INTAKE LOCATED IN THE SAME POSITION REGARDLESS OF OPTIONS

Desert Aire has a policy of continuous product and quality improvement. Specifications and dimensions are subject to change without notice. This drawing and information contained herein are the exclusive property of the Desert Aire Corporation. Any use detrimental to the interests of Desert Aire is prohibited.

ALL DIMENSIONS ARE IN INCHES
TOLERANCE ± 1/8"

All Dimensions in Inches
All Angles 90°
All outside corners 0.125" fillet
Unless Otherwise Specified



Third Angle Projection

Part weight

Tolerance Unless
Otherwise Specified
X.X ±.125
X.XX ±.060
X.XXX ±.030
Angles ±1°

Drawn
ASV
Date Released
1/19/2018

Sheet
3/8

Scale
NTS
Rev.
1



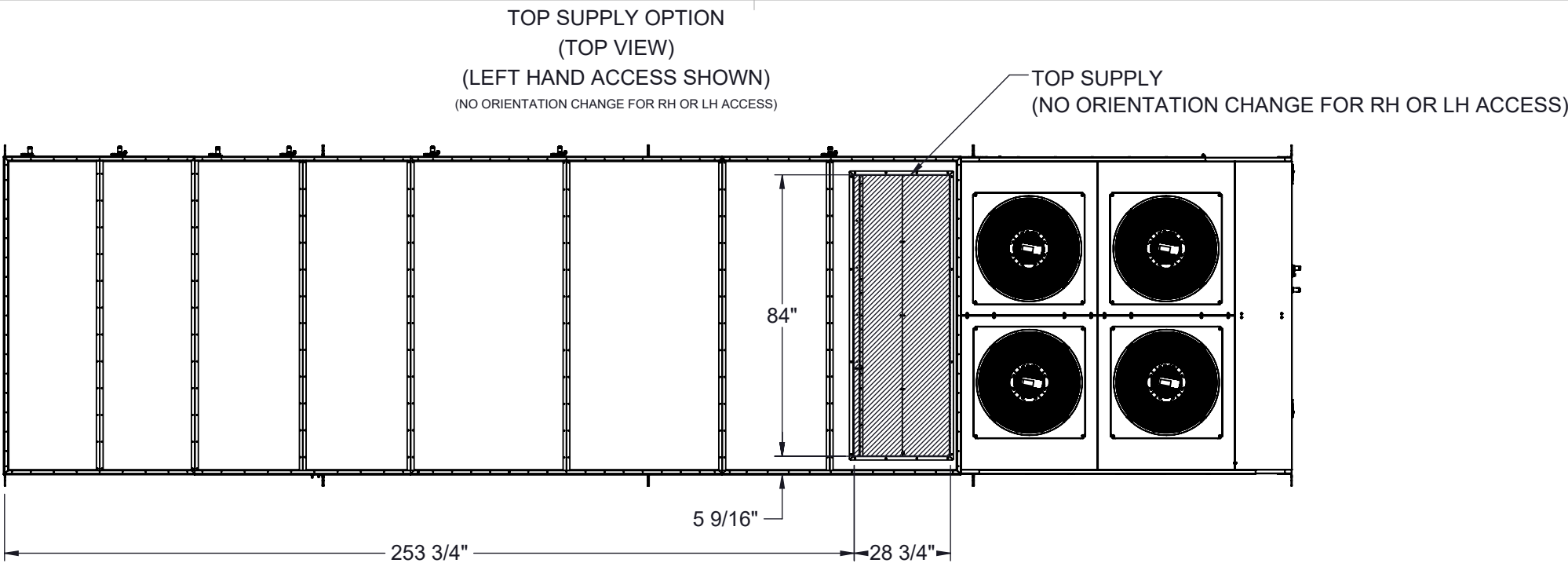
N120 W18485 FREISTADT RD
GERMANTOWN, WI 53022
Tel: (262) 946-7400
Fax: (262) 946-7401

Description
SP 40-50 TON PKG ELECT HEAT

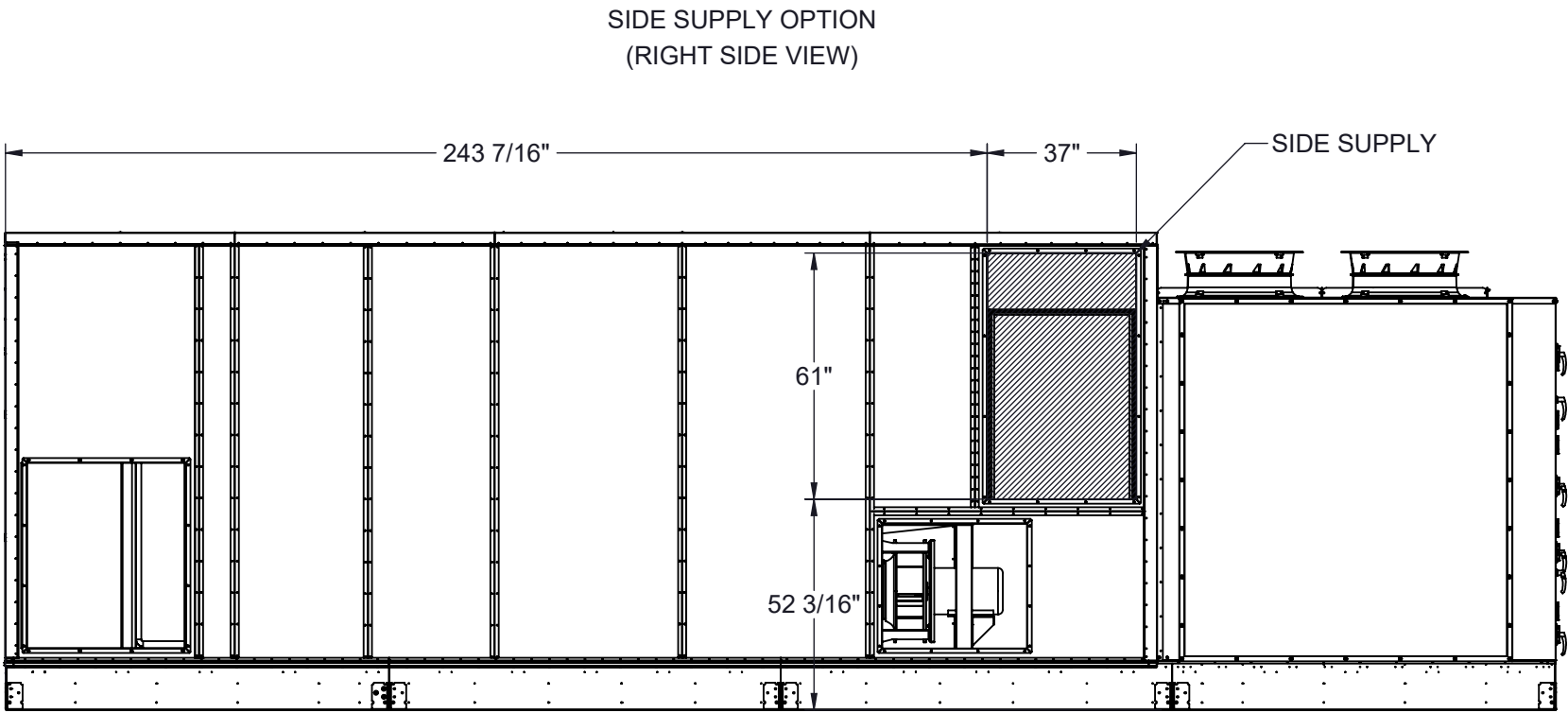
Page Title
INTAKE OPTIONS GA

Drawing Number
G1000-112

INTAKE



INTAKE



NOTES:
REFER TO SHEET 1 FOR GENERAL NOTES
LEFT HAND ACCESS SHOWN IN ALL VIEWS UNLESS OTHERWISE SPECIFIED
RIGHT HAND ACCESS OPTIONS LOCATED WITH SAME DIMENSIONS ON OPPOSITE SIDE UNLESS OTHERWISE SPECIFIED
HOODS REMOVED FOR CLARITY
ACCESS SIDE SUPPLY AIR OPTION WILL SHIFT FAN SECTION DOORS TO NON-ACCESS SIDE

Desert Aire has a policy of continuous product and quality improvement. Specifications and dimensions are subject to change without notice. This drawing and information contained herein are the exclusive property of the Desert Aire Corporation. Any use detrimental to the interests of Desert Aire is prohibited.

ALL DIMENSIONS ARE IN INCHES
TOLERANCE $\pm 1/8"$

All Dimensions in Inches
All Angles 90°
All outside corners 0.125" fillet
Unless Otherwise Specified



Third Angle Projection

Part weight

Tolerance Unless
Otherwise Specified
X.X $\pm .125$
X.XX $\pm .060$
X.XXX $\pm .030$
Angles $\pm 1^\circ$

Drawn
ASV
Date Released
1/19/2018

Sheet
4/8

Scale
NTS
Rev.
1

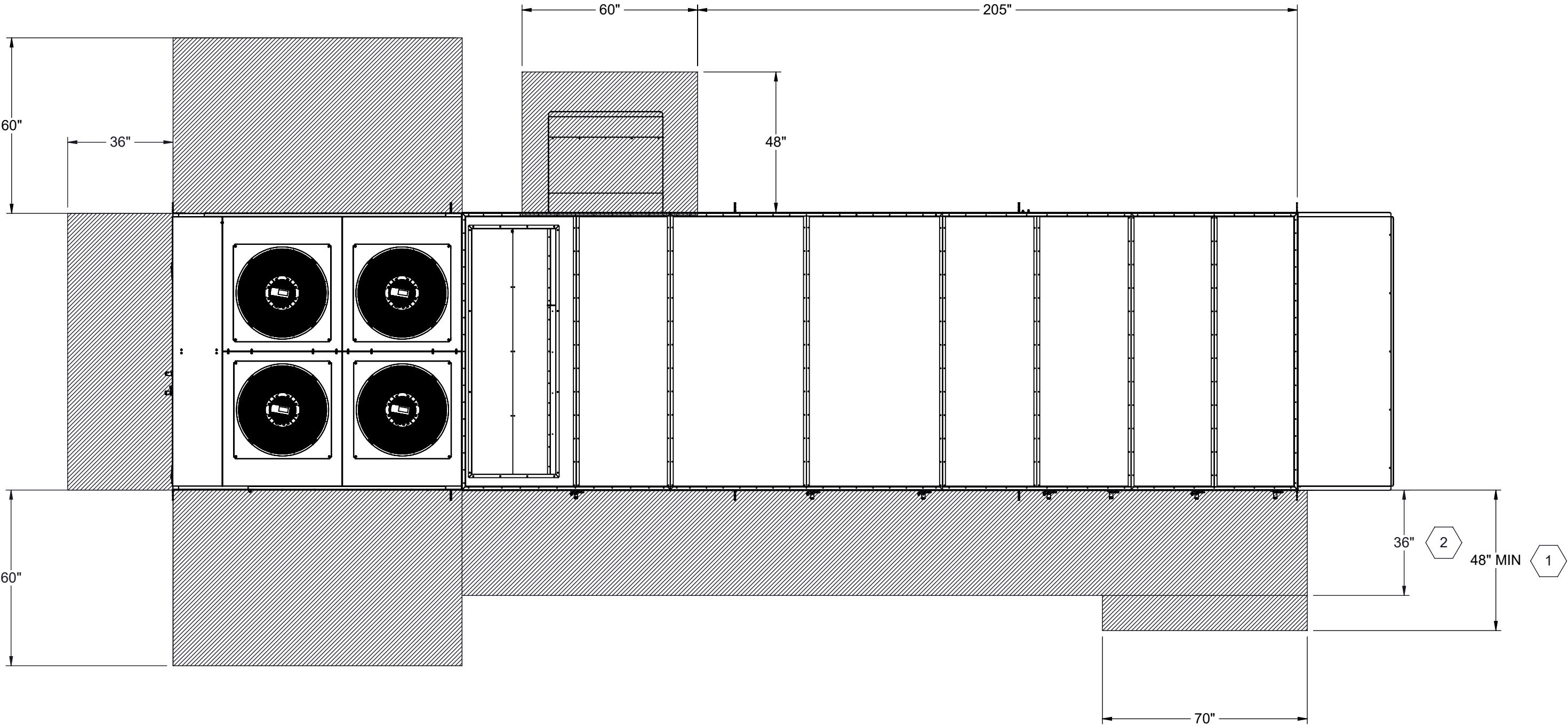


N120 W18485 FREISTADT RD
GERMANTOWN, WI 53022
Tel: (262) 946-7400
Fax: (262) 946-7401

Description
SP 40-50 TON PKG ELECT HEAT

Page Title
DISCHARGE OPTIONS GA

Drawing Number
G1000-112



- 1

96" RECOMMENDED FOR FILTER ACCESS.
- 2

120" CLEARANCE ON ACCESS SIDE RECOMMENDED FOR FAN AND COIL SERVICE

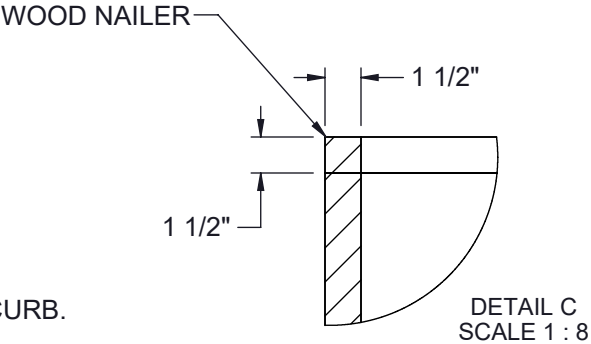
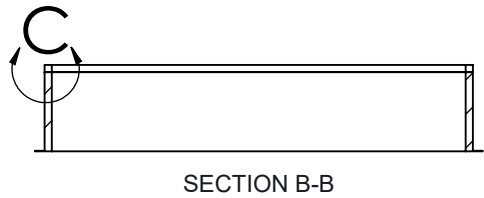
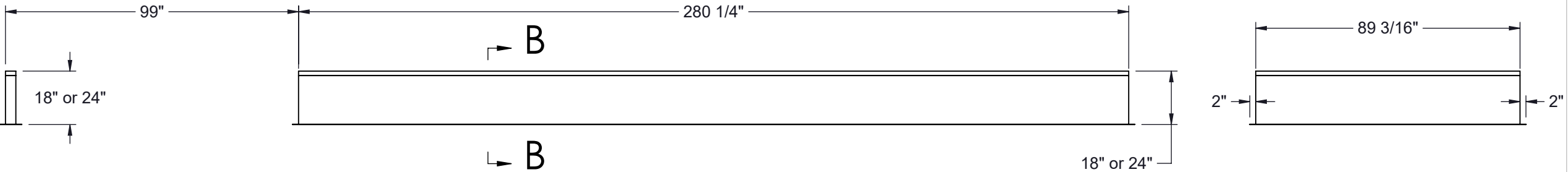
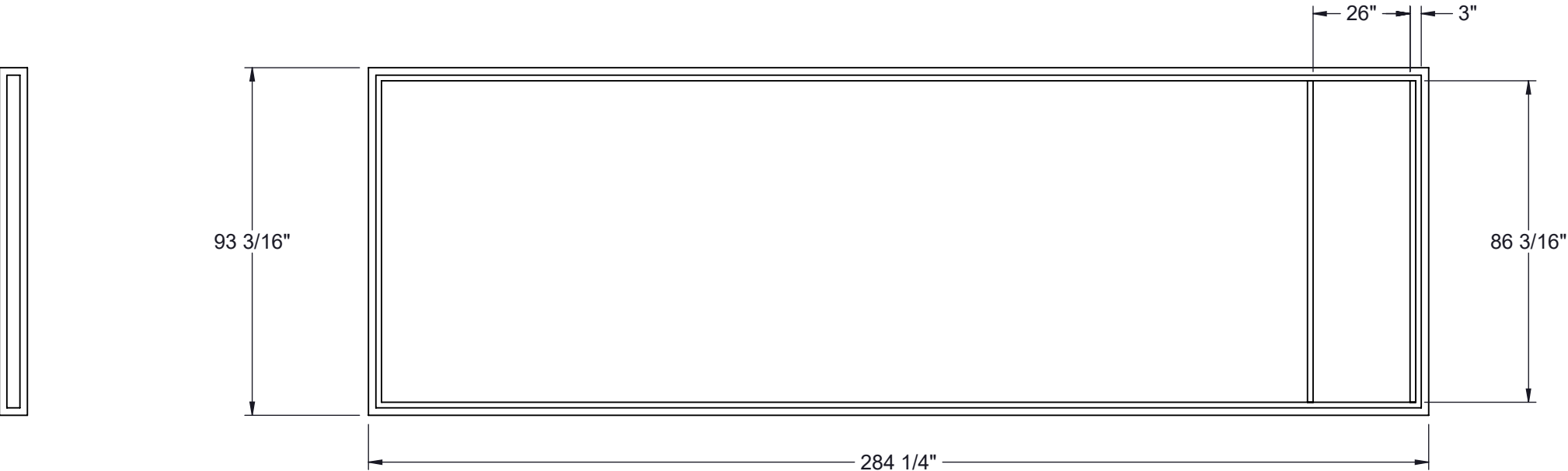
NOTES:
REFER TO SHEET 1 FOR GENERAL NOTES
LEFT HAND ACCESS SHOWN IN ALL VIEWS
RIGHT HAND ACCESS OPTIONS LOCATED WITH SAME DIMENSIONS ON OPPOSITE SIDE UNLESS OTHERWISE SPECIFIED

Desert Aire has a policy of continuous product and quality improvement. Specifications and dimensions are subject to change without notice. This drawing and information contained herein are the exclusive property of the Desert Aire Corporation. Any use detrimental to the interests of Desert Aire is prohibited.		All Dimensions in Inches All Angles 90° All outside corners 0.125" fillet Unless Otherwise Specified		Tolerance Unless Otherwise Specified X.X ±.125 X.XX ±.060 X.XXX ±.030 Angles ±1°		<div><div><div></div><div>DESERT AIRE</div></div><div>N120 W18485 FREISTADT RD GERMANTOWN, WI 53022 Tel: (262) 946-7400 Fax: (262) 946-7401</div></div>	
ALL DIMENSIONS ARE IN INCHES TOLERANCE ± 1/8"		Third Angle Projection		Drawn ASV	Date Released 1/19/2018	Description SP 40-50 TON PKG ELECT HEAT	
Part weight				Sheet 5/8		Page Title UNIT CLEARANCE GA	
				Scale NTS	Rev. 1	Drawing Number G1000-112	

NOTES:
REFER TO SHEET 1 FOR GENERAL NOTES

- 1. 14 GA GALVANIZED STEEL CONSTRUCTION
- 2. PRIME PAINTED AFTER FABRICATION
- 3. PRESSURE TREATED WOOD NAILERS
- 4. 1-1/2" THICK 3LB/FT^3 FIBERGLASS PERIMETER INSULATION
- 5. INTERNAL ANGLE REINFORCEMENT
- 6. CURB TO BE SHIPPED KNOCKED DOWN

UNIT TON	18" CURB	24" CURB
45-50	CB-50PENN-18	CB-50PENN-24



NUMBER AND LOCATION OF CROSS SUPPORTS IS DEPENDANT UPON THE GUAGE OF MATERIAL USED TO CONSTRUCT THE CURB, DUCT SUPPORT CONFIGURATION LENGTH OF CURB, AND WIDTH OF CURB. INSTALLATION INSTRUCTIONS INCLUDED WITH CURB SHIPMENT INDICATE THE REQUIRED POSITION FOR FIELD ASSEMBLED CURBS.

Desert Aire has a policy of continuous product and quality improvement. Specifications and dimensions are subject to change without notice. This drawing and information contained herein are the exclusive property of the Desert Aire Corporation. Any use detrimental to the interests of Desert Aire is prohibited.

ALL DIMENSIONS ARE IN INCHES
TOLERANCE $\pm 1/8"$

All Dimensions in Inches
All Angles 90°
All outside corners 0.125" fillet
Unless Otherwise Specified

Third Angle Projection

Part weight

Tolerance Unless Otherwise Specified	
X.X	$\pm .125$
X.XX	$\pm .060$
X.XXX	$\pm .030$
Angles	$\pm 1^\circ$

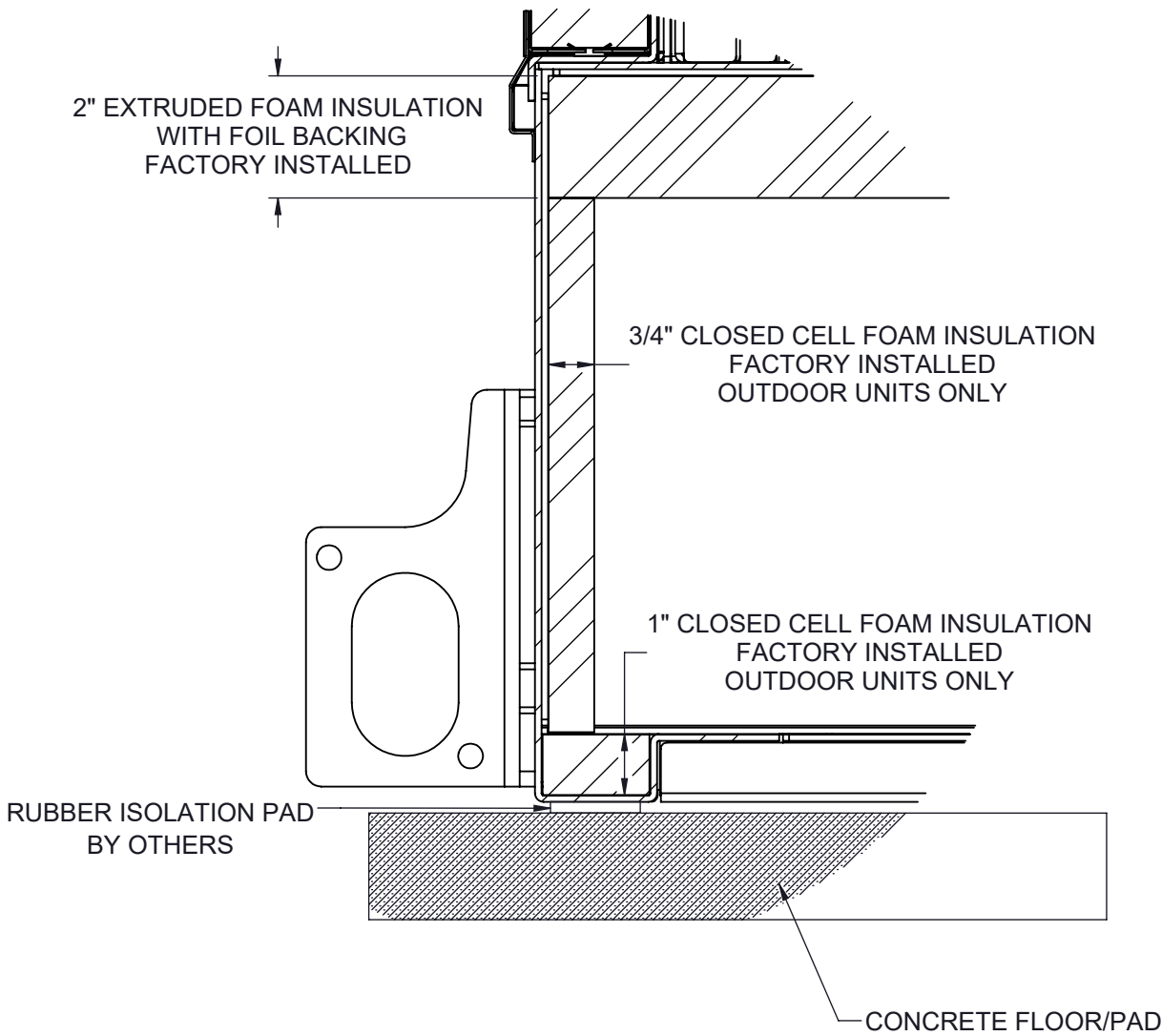
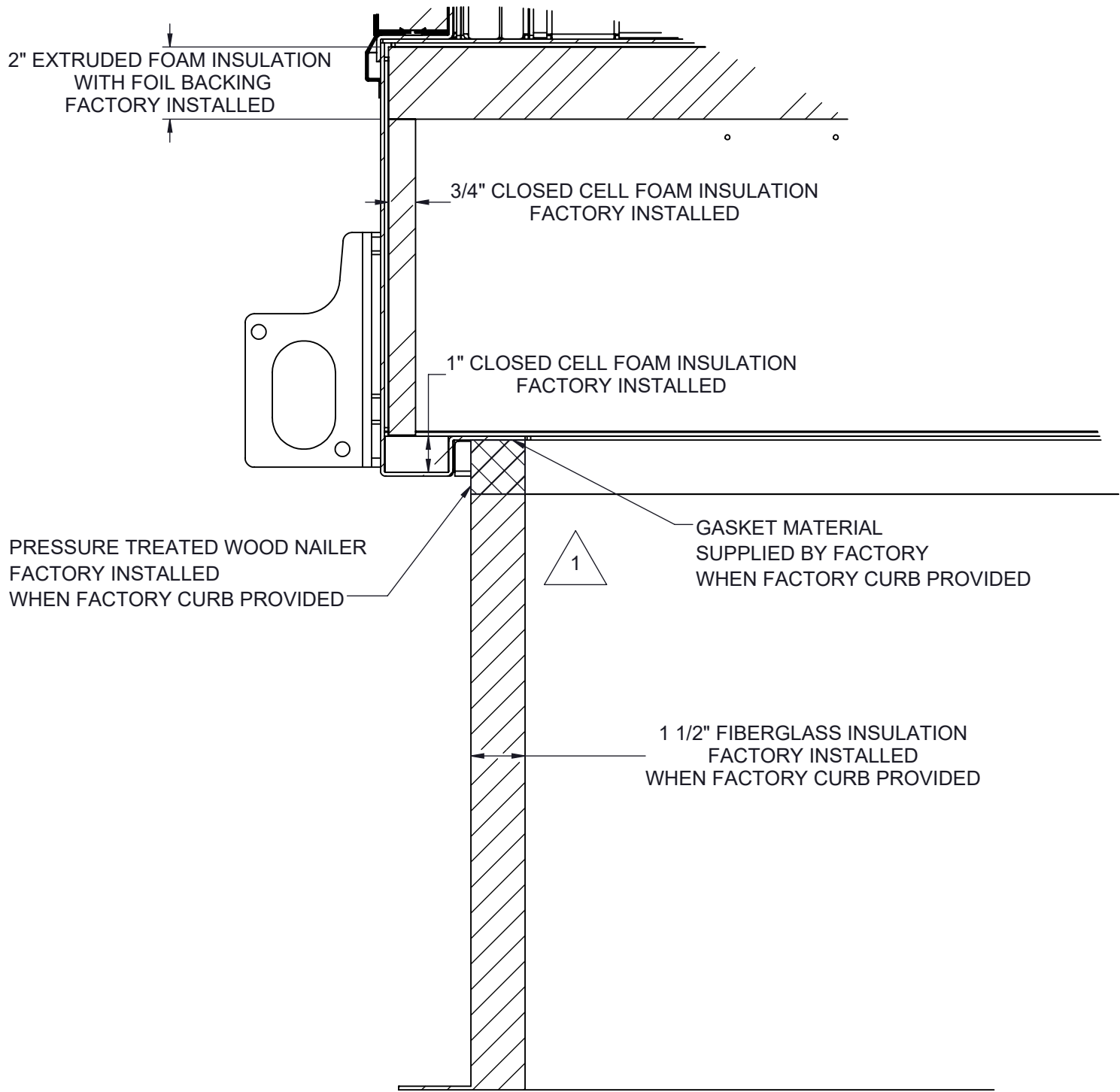
Drawn	ASV	Date Released	1/19/2018	
Sheet	6/8			
Scale	NTS		Rev.	1

N120 W18485 FREISTADT RD
GERMANTOWN, WI 53022
Tel: (262) 946-7400
Fax: (262) 946-7401

Description	SP 40-50 TON PKG ELECT HEAT
Page Title	CURB DETAIL GA
Drawing Number	G1000-112

CURB MOUNT

PAD MOUNT



1 ALL EXPOSED METAL TO BE SPRAY FOAM INSULATION AFTER INSTALLATION

NOTES:
REFER TO SHEET 1 FOR GENERAL NOTES
SEE SHEET 6 NOTES FOR CURB SPECIFICATIONS

Desert Aire has a policy of continuous product and quality improvement. Specifications and dimensions are subject to change without notice. This drawing and information contained herein are the exclusive property of the Desert Aire Corporation. Any use detrimental to the interests of Desert Aire is prohibited.

ALL DIMENSIONS ARE IN INCHES
TOLERANCE $\pm 1/8"$

All Dimensions in Inches
All Angles 90°
All outside corners 0.125" fillet
Unless Otherwise Specified



Third Angle Projection

Part weight

Tolerance Unless
Otherwise Specified
X.X $\pm .125$
X.XX $\pm .060$
X.XXX $\pm .030$
Angles $\pm 1^\circ$

Drawn
ASV
Date Released
1/19/2018

Sheet
7/8

Scale
NTS



N120 W18485 FREISTADT RD
GERMANTOWN, WI 53022
Tel: (262) 946-7400
Fax: (262) 946-7401

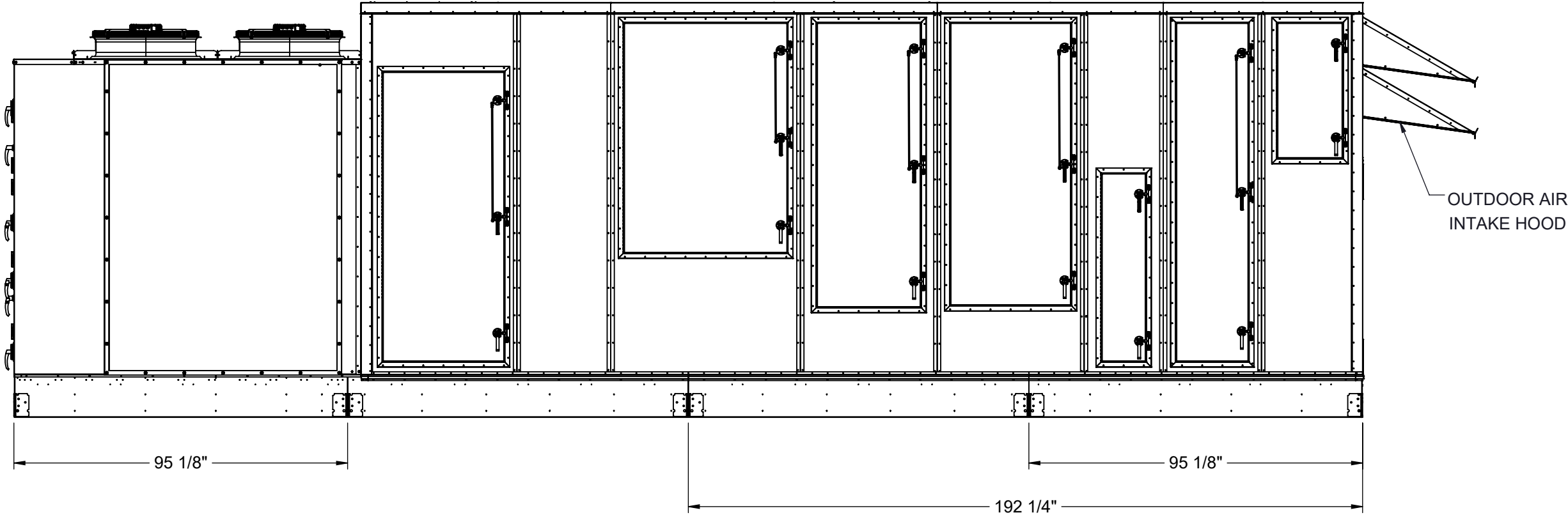
Description
SP 40-50 TON PKG ELECT HEAT

Page Title
MOUNTING DETAILS GA

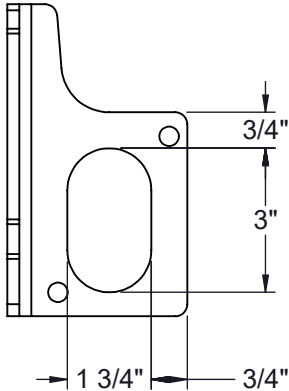
Drawing Number
G1000-112

SHIP LOOSE ITEMS
EXHAUST HOOD

DA PART NO	DESCRIPTION	QTY
HOOD	EXHAUST ASSEMBLY	1
807-023	SCREW #8-18X1/2 SS	36
990-105	CAULK WHITE	1



LUG DETAIL



NOTES:
REFER TO SHEET 1 FOR GENERAL NOTES AND HOOD DETAILS

Desert Aire has a policy of continuous product and quality improvement. Specifications and dimensions are subject to change without notice. This drawing and information contained herein are the exclusive property of the Desert Aire Corporation. Any use detrimental to the interests of Desert Aire is prohibited.

ALL DIMENSIONS ARE IN INCHES
TOLERANCE $\pm 1/8"$

All Dimensions in Inches
All Angles 90°
All outside corners 0.125" fillet
Unless Otherwise Specified

Third Angle Projection

Part weight

Tolerance Unless Otherwise Specified	
X.X	$\pm .125$
X.XX	$\pm .060$
X.XXX	$\pm .030$
Angles	$\pm 1^\circ$

N120 W18485 FREISTADT RD
GERMANTOWN, WI 53022
Tel: (262) 946-7400
Fax: (262) 946-7401

Drawn ASV	Date Released 1/19/2018	Description SP 40-50 TON PKG ELECT HEAT
Sheet	8/8	Page Title SHIPPING/LIFTING DETAILS GA
Scale NTS	Rev. 1	Drawing Number G1000-112