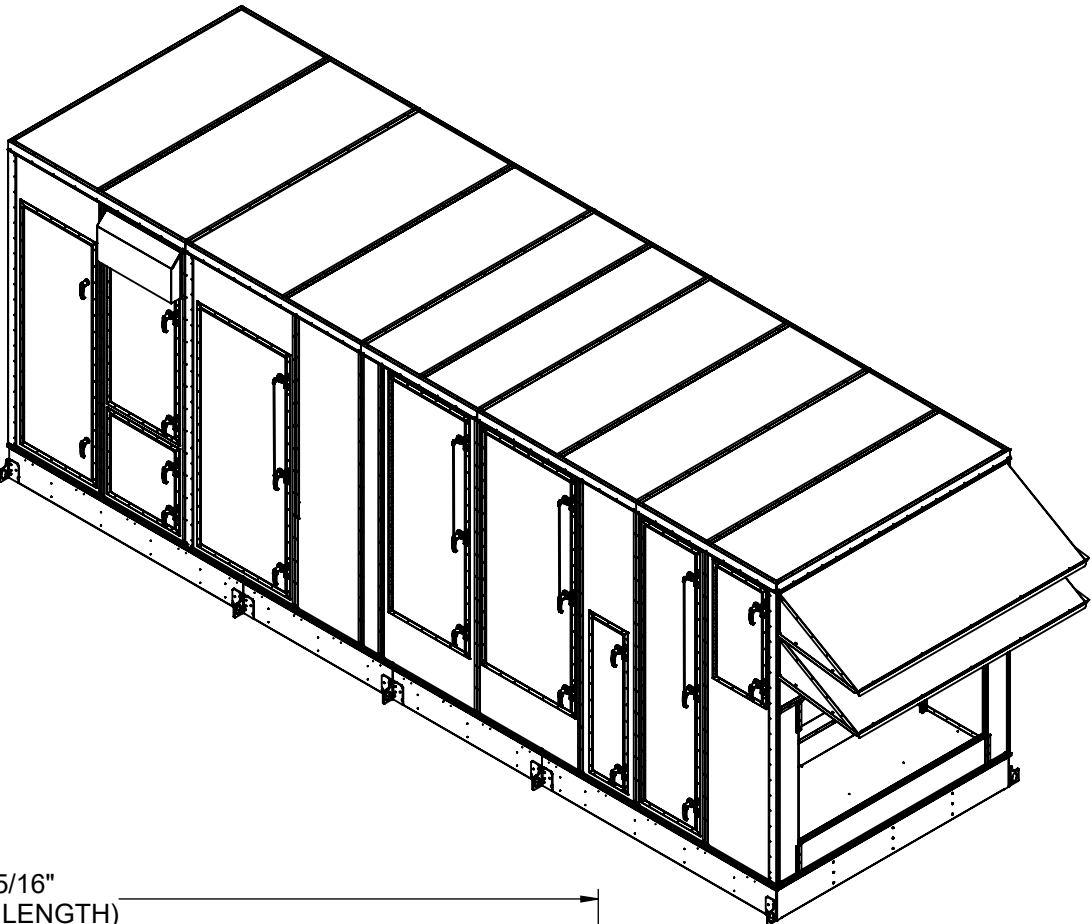
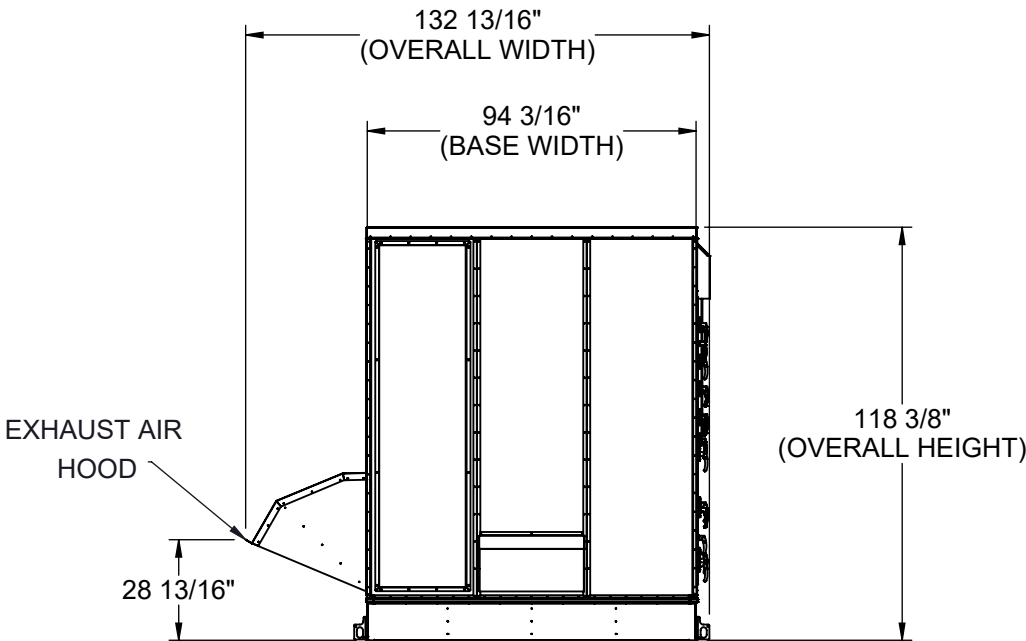


GENERAL NOTES FOR APPLICABLE SHEETS:

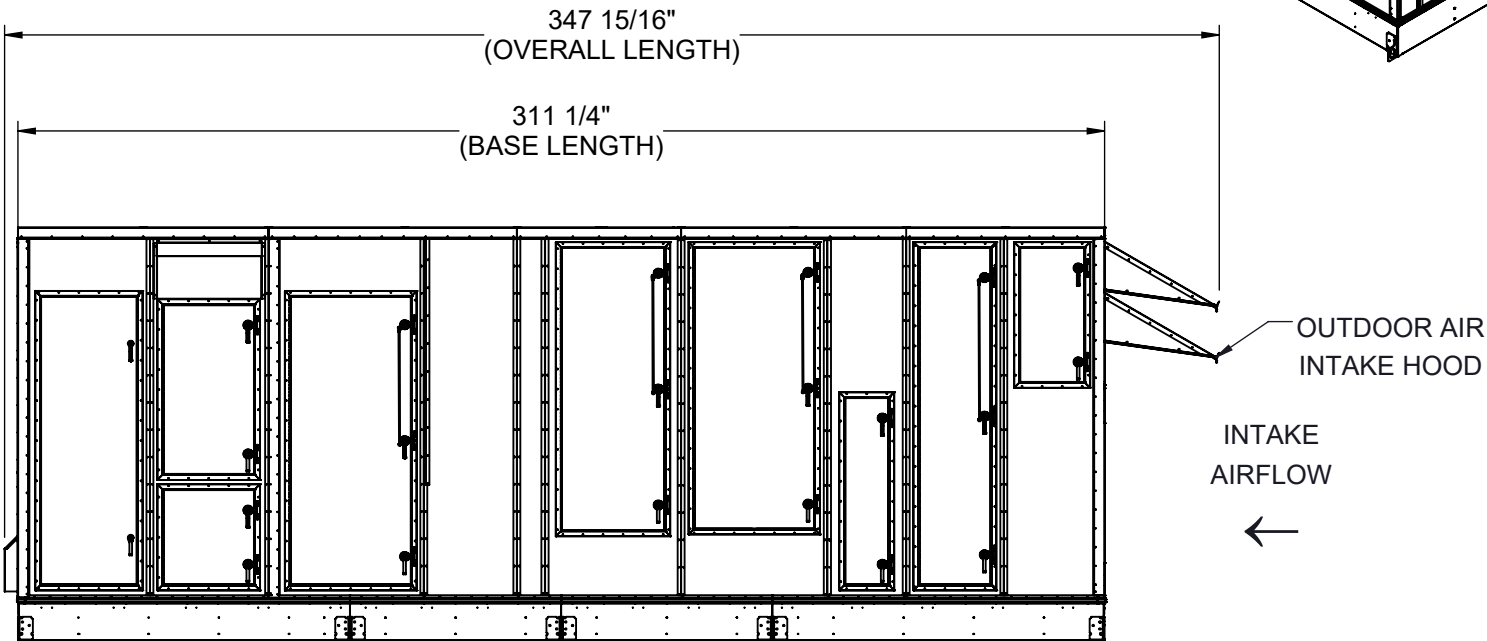
LEFT HAND ACCESS SHOWN IN ALL VIEWS
RIGHT HAND ACCESS OPTIONS LOCATED WITH SAME DIMENSIONS ON OPPOSITE SIDE UNLESS OTHERWISE SPECIFIED
WEIGHTS SHOWN REFLECT FULLY OPTIONED ESTIMATED UNIT WEIGHT



BACK VIEW



LEFT SIDE VIEW



UNIT SIZE	ESTIMATED WEIGHT (lbs.)
45-50 TONS	15500

Desert Aire has a policy of continuous product and quality improvement. Specifications and dimensions are subject to change without notice. This drawing and information contained herein are the exclusive property of the Desert Aire Corporation. Any use detrimental to the interests of Desert Aire is prohibited.

ALL DIMENSIONS ARE IN INCHES
TOLERANCE $\pm 1/8"$

All Dimensions in Inches
All Angles 90°
All outside corners 0.125" fillet
Unless Otherwise Specified



Third Angle Projection

Part weight

Tolerance Unless Otherwise Specified
X.X $\pm .125$
X.XX $\pm .060$
X.XXX $\pm .030$
Angles $\pm 1^\circ$

Drawn
ASV
Date Released
1/19/2018

Sheet
1/9

Scale
NTS



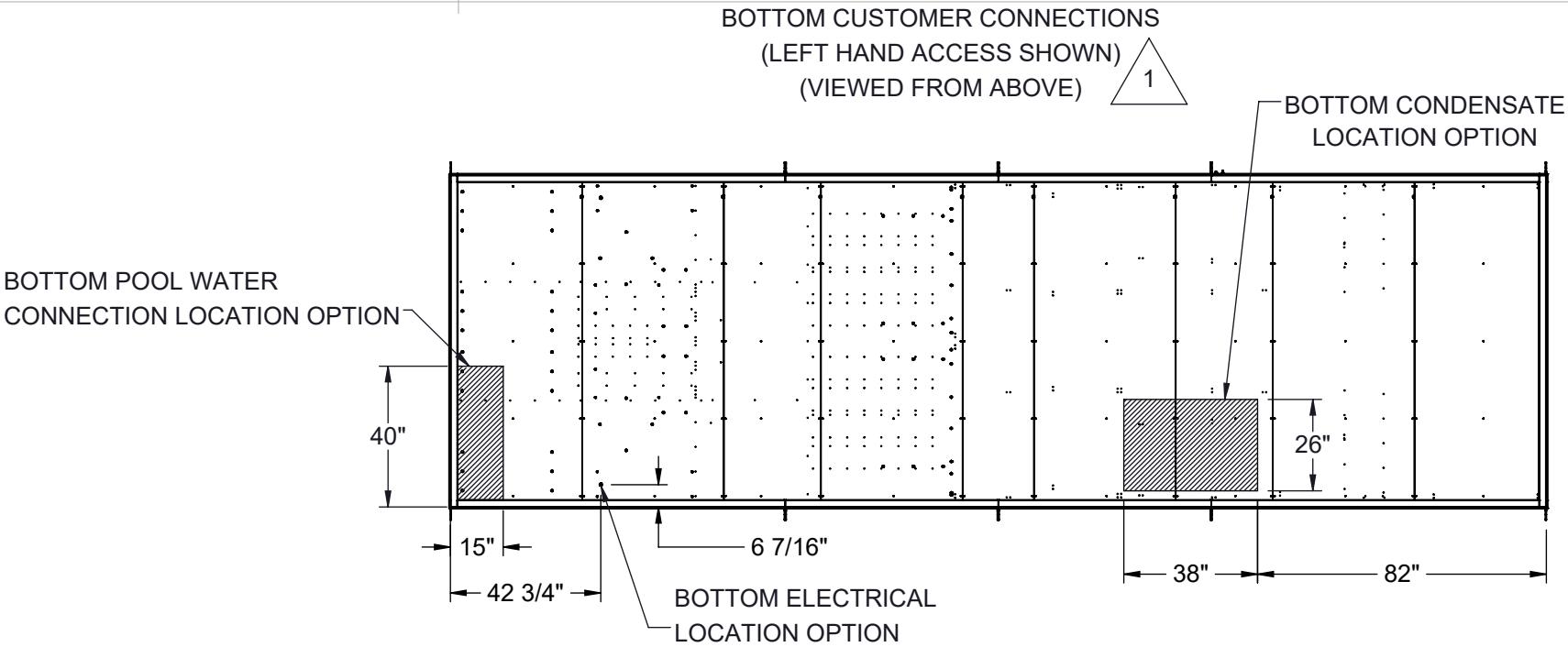
N120 W18485 FREISTADT RD
GERMANTOWN, WI 53022
Tel: (262) 946-7400
Fax: (262) 946-7401

Description
SP 40-50 TON SPLIT

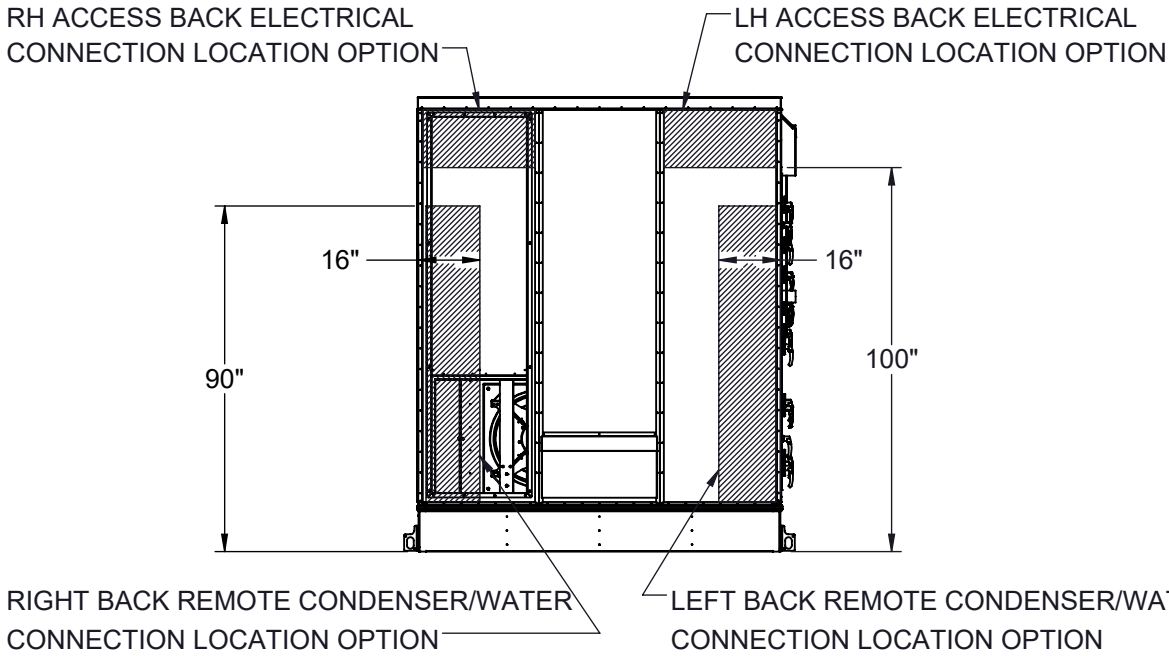
Page Title
GENERAL ARRANGEMENT

Drawing Number
G1000-102

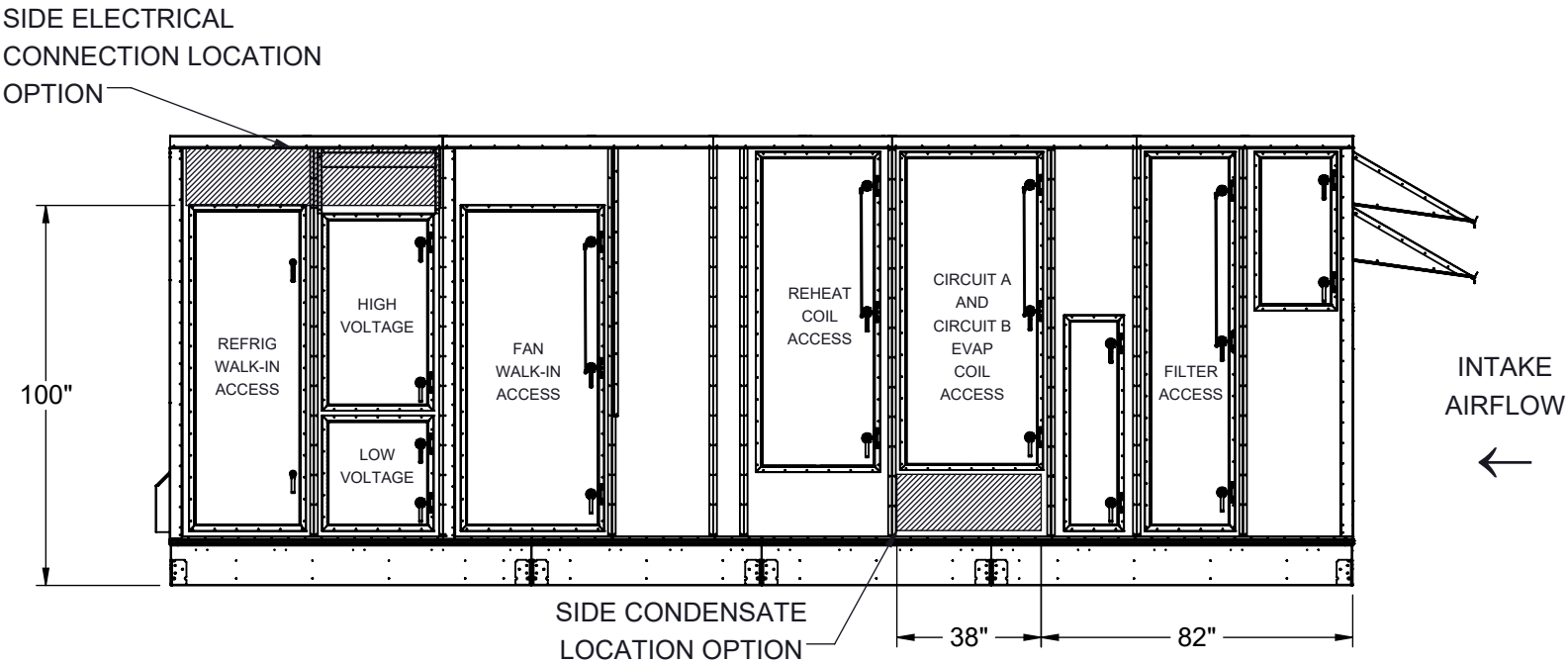
CUSTOMER CONNECTION LINE SIZE (in.)		
UNIT SIZE	45 TONS	50 TONS
CONDENSATE (PVC)	1 1/2	1 1/2
POOL WATER LINE CIRCUIT A (CPVC)	1	2
POOL WATER LINE CIRCUIT B (CPVC)	2	2
DISCHARGE LINE CIRCUIT A (CU)	1 1/8	1 1/8
LIQUID LINE CIRCUIT A (CU)	3/4	7/8
DISCHARGE LINE CIRCUIT B (CU)	1 1/8	1 1/8
LIQUID LINE CIRCUIT B (CU)	7/8	7/8
COOLING LOOP (CU)	2	3



BACK CONNECTIONS VIEW
(NO ORIENTATION CHANGE FOR RH OR LH ACCESS)



LEFT SIDE CONNECTION VIEW
(LEFT HAND ACCESS SHOWN)



NOTES:
REFER TO SHEET 1 FOR GENERAL NOTES
LEFT HAND ACCESS SHOWN IN ALL VIEWS
RIGHT HAND ACCESS OPTIONS LOCATED WITH SAME DIMENSIONS ON OPPOSITE SIDE UNLESS OTHERWISE SPECIFIED



FILTER INFORMATION						
UNIT SIZE	OA QTY	OA SIZE	REPLACEMENT PART NUMBER	RA QTY	RA SIZE	REPLACEMENT PART NUMBER
45-50 TONS	10	18 X 24 X 4	870-056	10	18 X 24 X 4	870-056

Desert Aire has a policy of continuous product and quality improvement. Specifications and dimensions are subject to change without notice. This drawing and information contained herein are the exclusive property of the Desert Aire Corporation. Any use detrimental to the interests of Desert Aire is prohibited.

ALL DIMENSIONS ARE IN INCHES
TOLERANCE ± 1/8"

All Dimensions in Inches
All Angles 90°
All outside corners 0.125" fillet
Unless Otherwise Specified

Third Angle Projection

Part weight

Tolerance Unless Otherwise Specified
X.X ±.125
X.XX ±.060
X.XXX ±.030
Angles ±1°

Drawn **ASV** Date Released **1/19/2018**

Sheet **2/9**

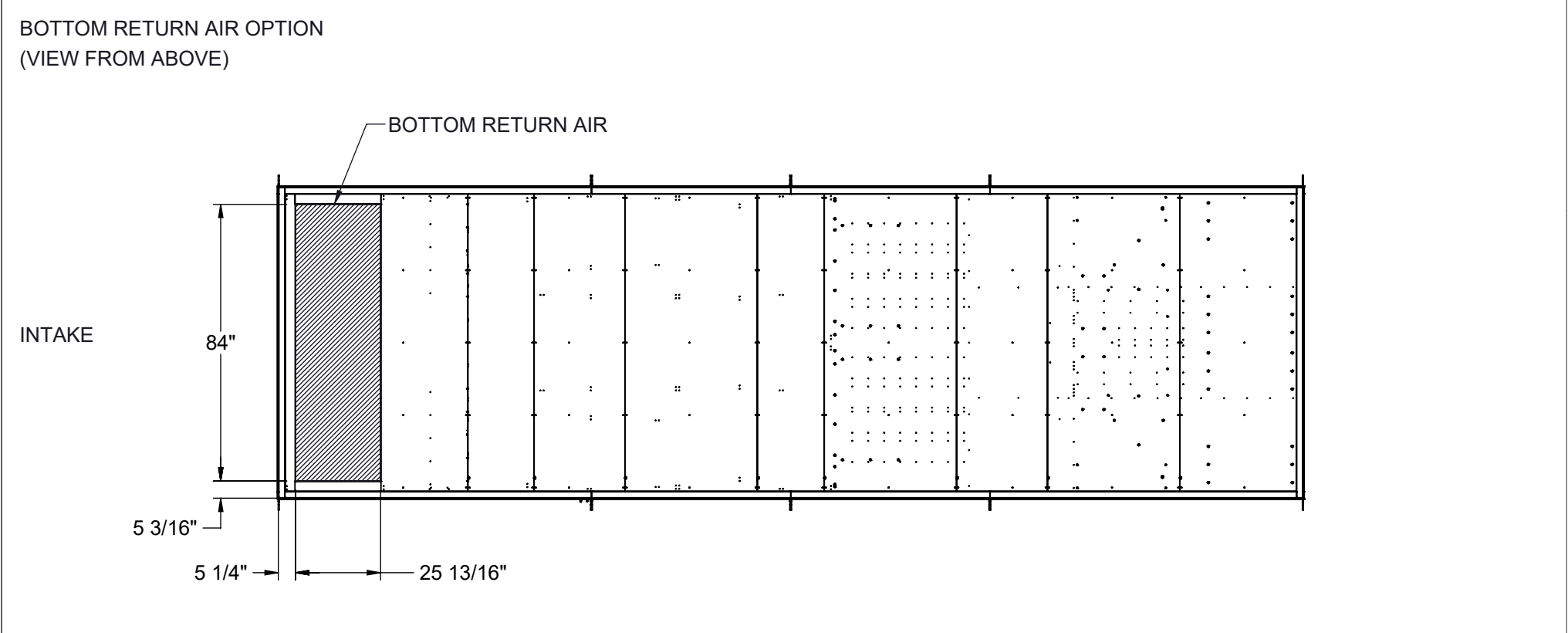
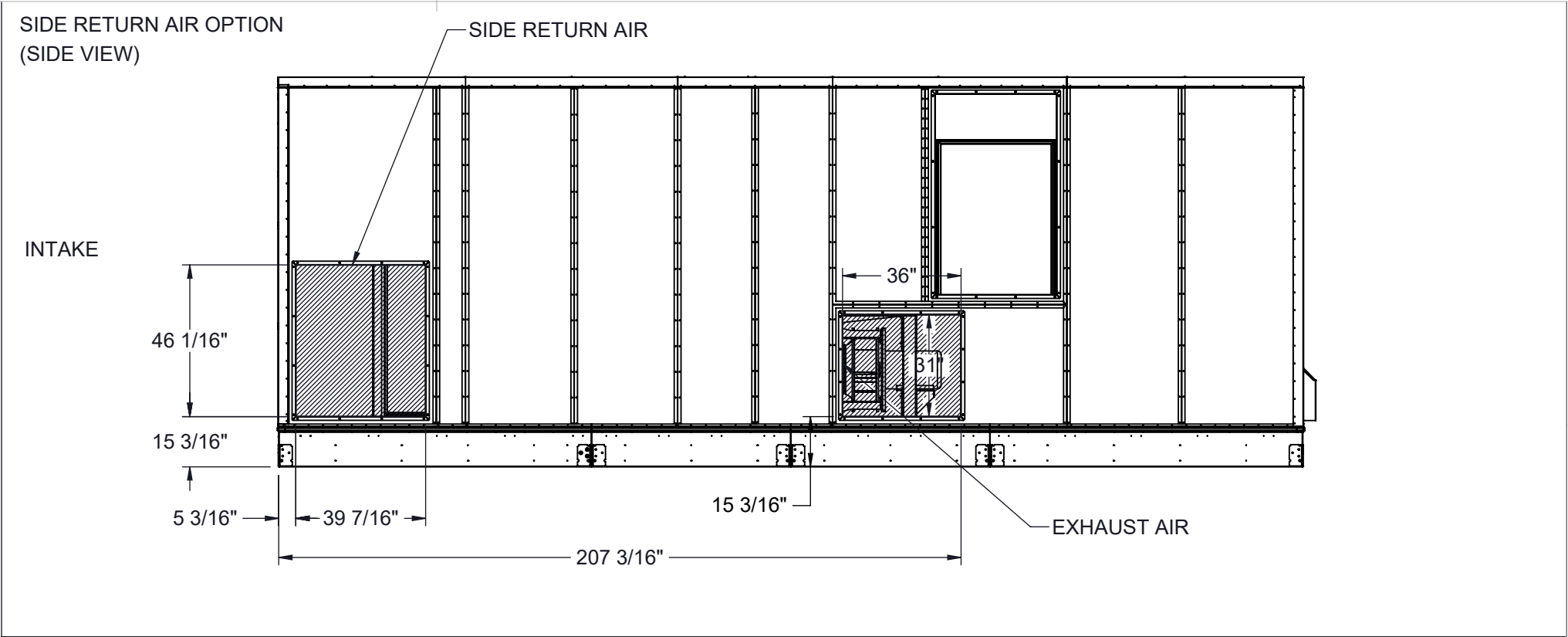
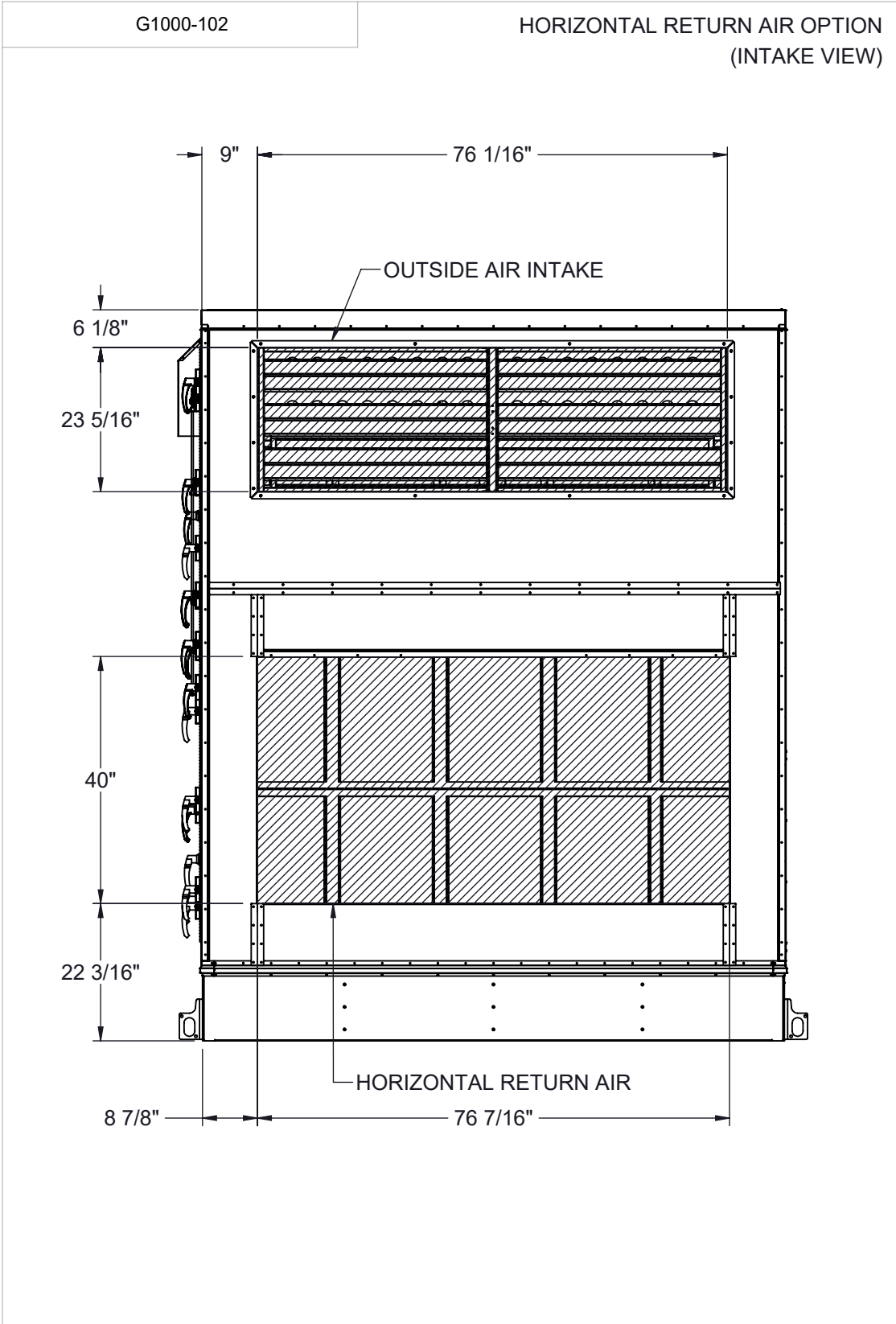
Scale **NTS** Rev. **1**

DESERT AIRE
N120 W18485 FREISTADT RD
GERMANTOWN, WI 53022
Tel: (262) 946-7400
Fax: (262) 946-7401

Description **SP 40-50 TON SPLIT**

Page Title **CUSTOMER INTERFACE GA**

Drawing Number **G1000-102**



NOTES:
REFER TO SHEET 1 FOR GENERAL NOTES
HOODS REMOVED FOR CLARITY
ACCESS SIDE RETURN AIR OPTION WILL SHIFT FILTER SECTION DOORS TO NON-ACCESS SIDE
OUTSIDE AIR INTAKE LOCATED IN THE SAME POSITION REGARDLESS OF OPTIONS

Desert Aire has a policy of continuous product and quality improvement. Specifications and dimensions are subject to change without notice. This drawing and information contained herein are the exclusive property of the Desert Aire Corporation. Any use detrimental to the interests of Desert Aire is prohibited.

ALL DIMENSIONS ARE IN INCHES
TOLERANCE $\pm 1/8"$

All Dimensions in Inches
All Angles 90°
All outside corners 0.125" fillet
Unless Otherwise Specified



Third Angle Projection

Part weight

Tolerance Unless
Otherwise Specified
X.X $\pm .125$
X.XX $\pm .060$
X.XXX $\pm .030$
Angles $\pm 1^\circ$

Drawn
ASV
Date Released
1/19/2018

Sheet
3/9

Scale
NTS



N120 W18485 FREISTADT RD
GERMANTOWN, WI 53022
Tel: (262) 946-7400
Fax: (262) 946-7401

Description
SP 40-50 TON SPLIT

Page Title
INTAKE OPTIONS GA

Drawing Number
G1000-102

HORIZONTAL SUPPLY OPTION
(NO ORIENTATION CHANGE FOR RH OR LH ACCESS)
(DISCHARGE VIEW)

FRONT ELEVATION VIEW

HORIZONTAL SUPPLY

98"

15 3/16"

2 15/16"

25"

Technical drawing of a cabinet with dimensions and labels:

- HORIZONTAL SUPPLY**: Label pointing to the top horizontal supply line.
- 98"**: Vertical dimension indicating the height of the cabinet.
- 15 3/16"**: Horizontal dimension indicating the width of the cabinet.
- 25"**: Horizontal dimension indicating the width of the central section.
- 3 3/8"**: Horizontal dimension indicating the width of the rightmost section.

INTAKE

Technical drawing of a kitchen layout showing a long counter with a sink and stove area. Dimensions are provided for the overall length, individual sections, and heights. A label "TOP EXHAUST" points to the upper part of the stove area.

Overall dimensions and section lengths (from left to right):

- Overall length: $242 \frac{1}{2}"$
- Section 1 length: $207 \frac{3}{4}"$
- Section 2 length: $5 \frac{9}{16}"$
- Section 3 length: $28 \frac{3}{4}"$
- Section 4 length: $65 \frac{3}{4}"$

Vertical dimensions (from bottom to top):

- Section 1 height: $84"$
- Section 2 height: $25 \frac{3}{8}"$
- Section 3 height: $3 \frac{5}{16}"$

Label: TOP EXHAUST

INTAKE

Technical drawing of a mobile office unit. The overall width is 199 7/16" and the overall height is 113 1/2". The unit features a main interior space with a door on the right side, labeled "SIDE SUPPLY". The door is 37" wide and 61" high. The main interior space is 52 3/16" high. The unit is shown with a front view and a side view, indicating its modular construction.

TOP EXHAUST WILL CHANGE SIDE LOCATION BASED ON ACCESS SIDE SELECTION

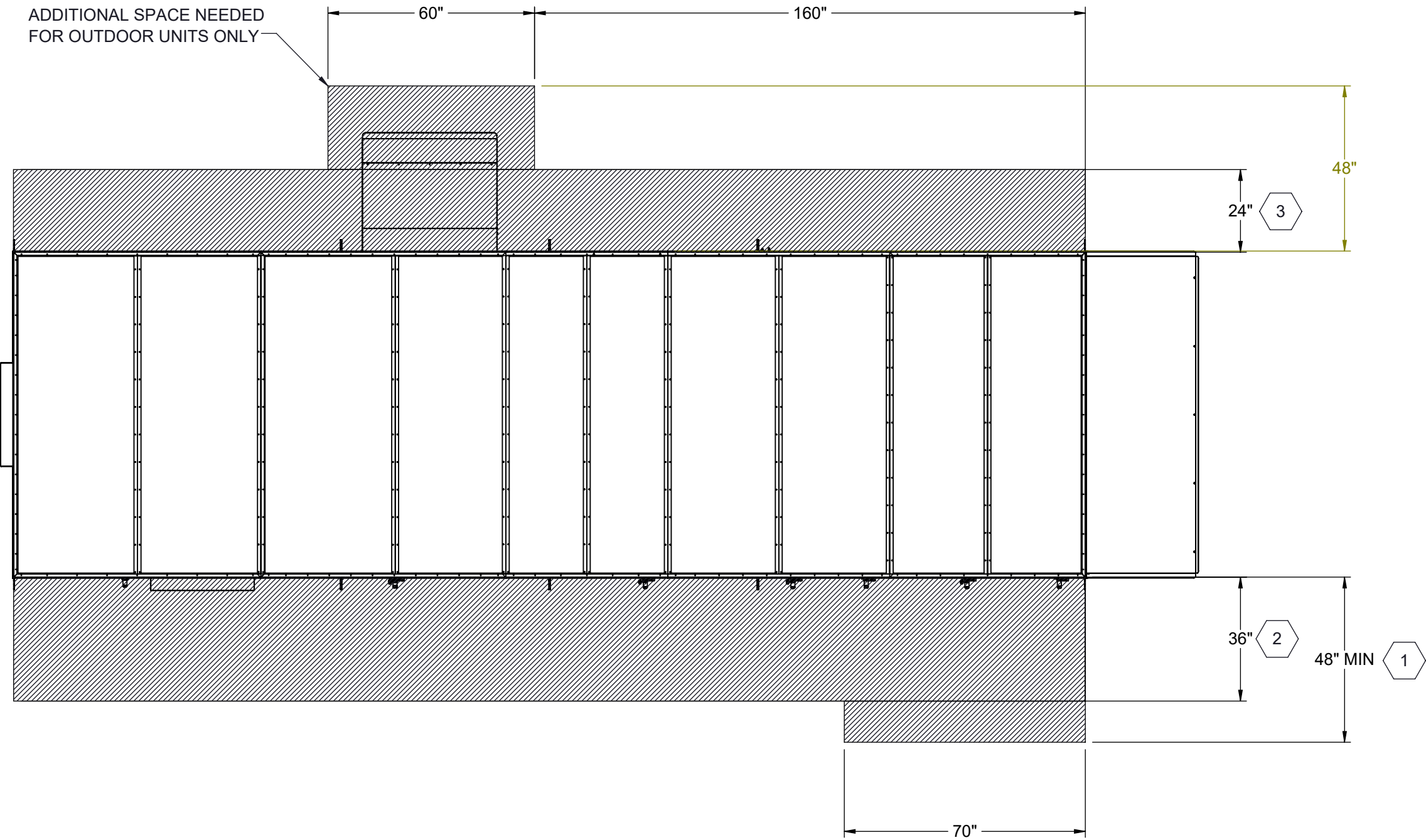
ALL DIMENSIONS ARE IN INCHES
TOLERANCE $\pm 1/8"$

Part weight

NTS



N120 W18485 FREISTADT RD
GERMANTOWN, WI 53022
Tel: (262) 946-7400
Fax: (262) 946-7401

Drawing Number	G1000-102
----------------	-----------



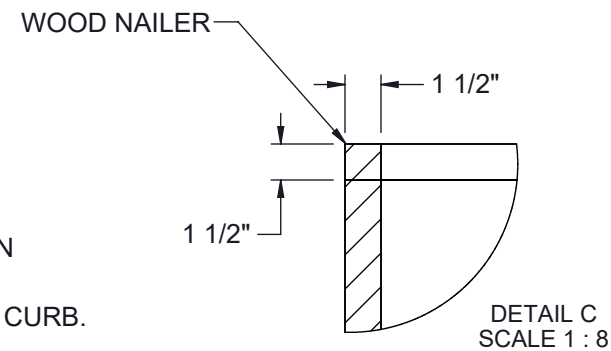
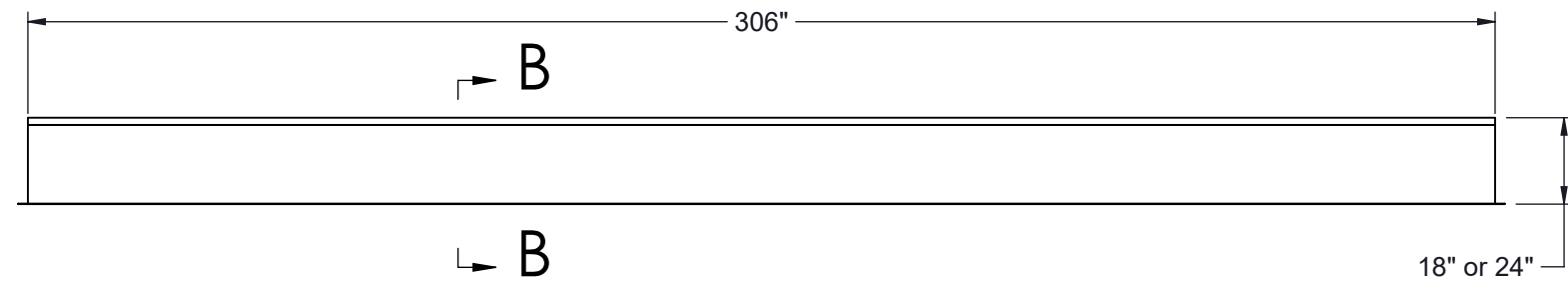
- 1 96" RECOMMENDED FOR FILTER ACCESS.
- 2 120" CLEARANCE ON ACCESS SIDE RECOMMENDED FOR FAN AND COIL SERVICE
- 3 REQUIRED FOR ASSEMBLY OF SECTIONED UNITS ONLY



NOTES:
REFER TO SHEET 1 FOR GENERAL NOTES
LEFT HAND ACCESS SHOWN IN ALL VIEWS
RIGHT HAND ACCESS OPTIONS LOCATED WITH SAME DIMENSIONS ON OPPOSITE SIDE UNLESS OTHERWISE SPECIFIED

Desert Aire has a policy of continuous product and quality improvement. Specifications and dimensions are subject to change without notice. This drawing and information contained herein are the exclusive property of the Desert Aire Corporation. Any use detrimental to the interests of Desert Aire is prohibited.		All Dimensions in Inches All Angles 90° All outside corners 0.125" fillet Unless Otherwise Specified		Tolerance Unless Otherwise Specified X.X ±.125 X.XX ±.060 X.XXX ±.030 Angles ±1°		 <div>N120 W18485 FREISTADT RD GERMANTOWN, WI 53022 Tel: (262) 946-7400 Fax: (262) 946-7401</div>	
ALL DIMENSIONS ARE IN INCHES TOLERANCE ± 1/8"		 Third Angle Projection		Drawn	Date Released	Description	
				ASV	1/19/2018	SP 40-50 TON SPLIT	
Part weight				Sheet	5/9	Page Title	
				Scale	NTS	Rev.	Drawing Number
						1	G1000-102

NOTES:
REFER TO SHEET 1 FOR GENERAL NOTES

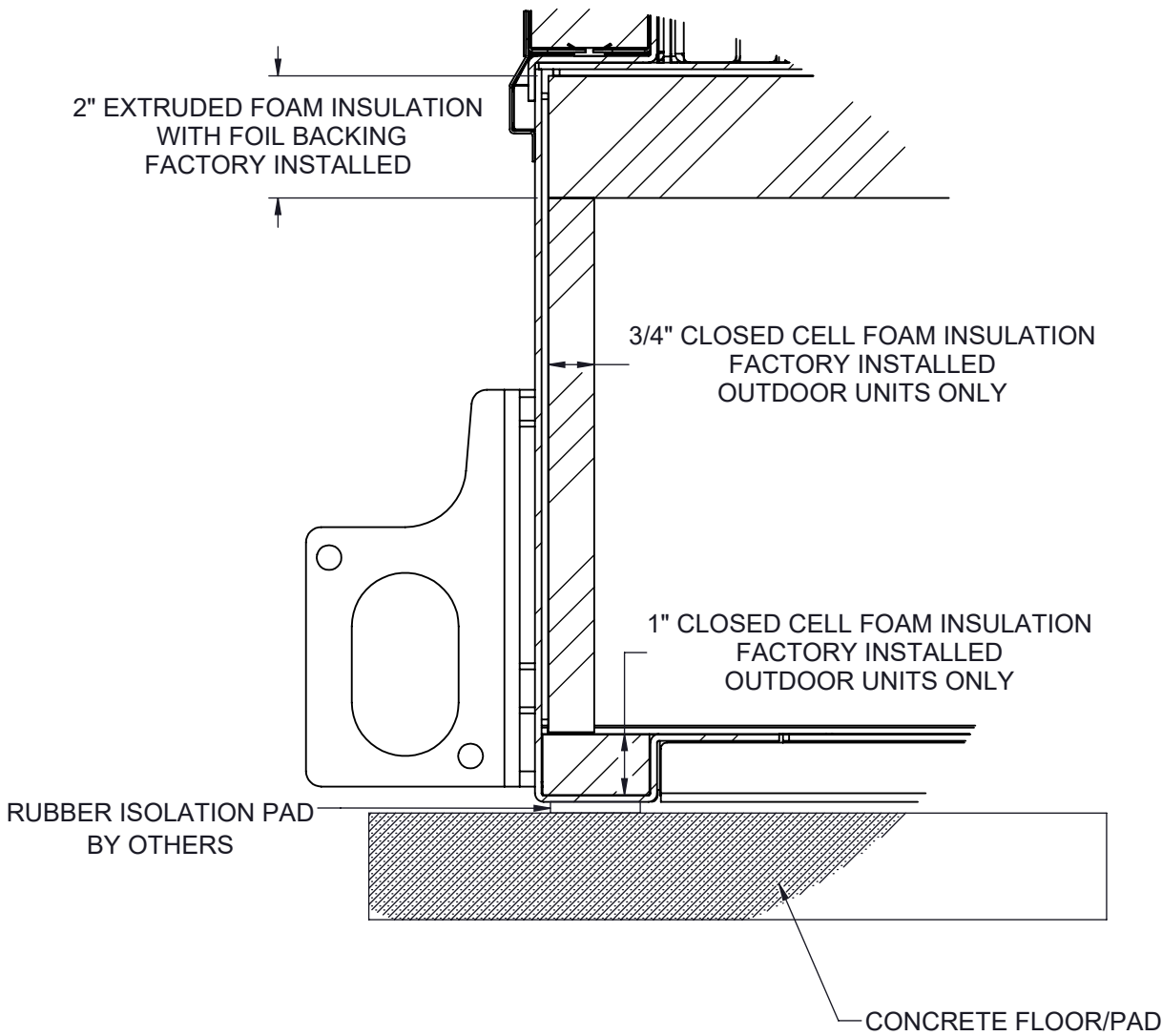
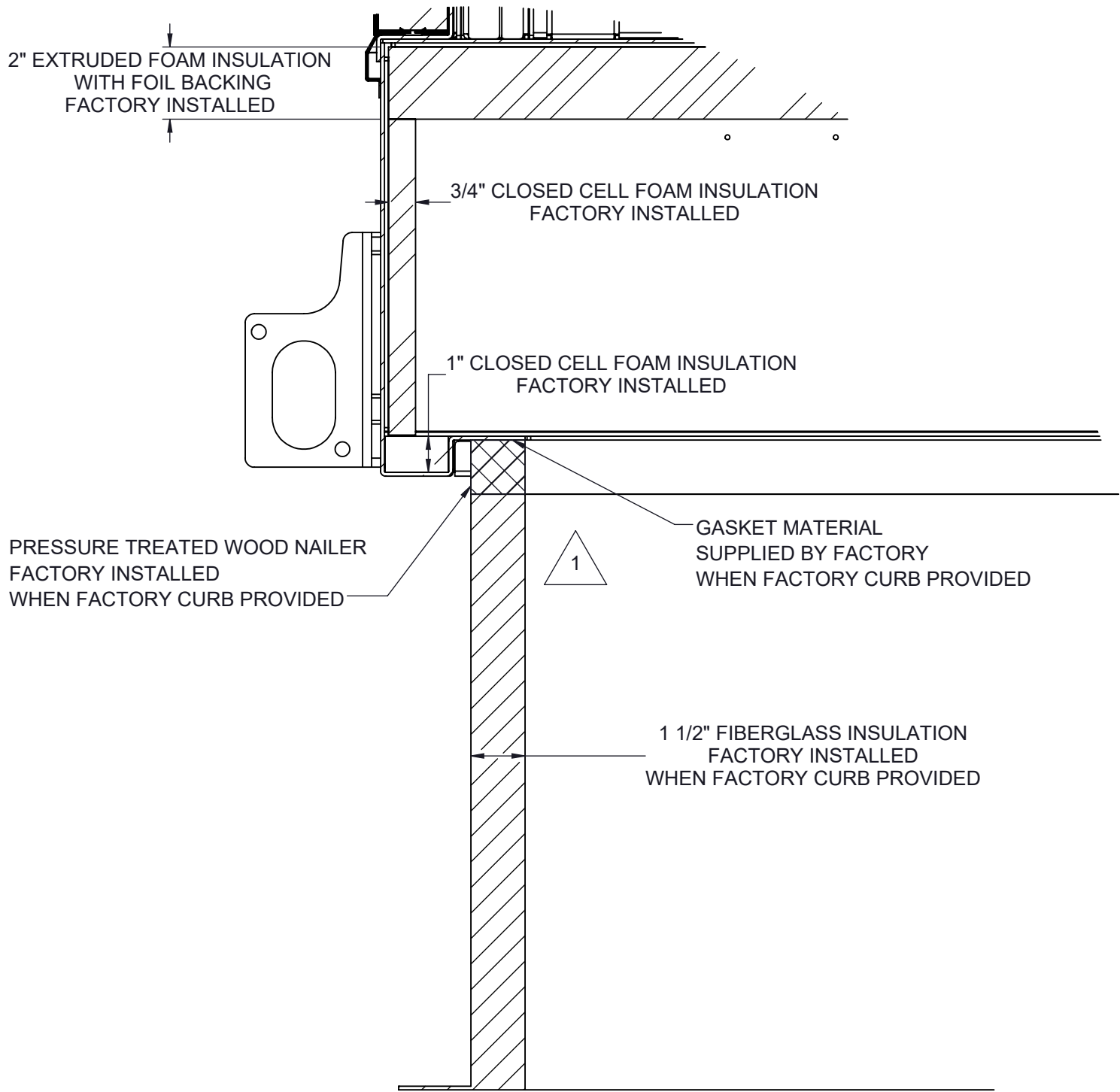
- | | | |
|----------|--------------|--------------|
| UNIT TON | 18" CURB | 24" CURB |
| 45-50 | CB-50NNNN-18 | CB-50NNNN-24 |



<p>Desert Aire has a policy of continuous product and quality improvement. Specifications and dimensions are subject to change without notice.</p> <p>This drawing and information contained herein are the exclusive property of the Desert Aire Corporation. Any use detrimental to the interests of Desert Aire is prohibited.</p>	<p>All Dimensions in Inches All Angles 90° All outside corners 0.125" fillet Unless Otherwise Specified</p>	<p>Tolerance Unless Otherwise Specified</p> <p>X.X ±.125 X.XX ±.060 X.XXX ±.030 Angles ±1°</p>		 <p>N120 W18485 FREISTADT RD GERMANTOWN, WI 53022 Tel: (262) 946-7400 Fax: (262) 946-7401</p>	
		<p>Drawn ASV</p>	<p>Date Released 1/19/2018</p>	<p>Description SP 40-50 TON SPLIT</p>	
	<p>Third Angle Projection</p>	<p>Sheet 6/9</p>		<p>Page Title CURB DETAIL GA</p>	
<p>ALL DIMENSIONS ARE IN INCHES TOLERANCE ± 1/8"</p>	<p>Part weight</p>	<p>Scale NTS</p>	<p>Rev. 1</p>	<p>Drawing Number G1000-102</p>	



CURB MOUNT

PAD MOUNT



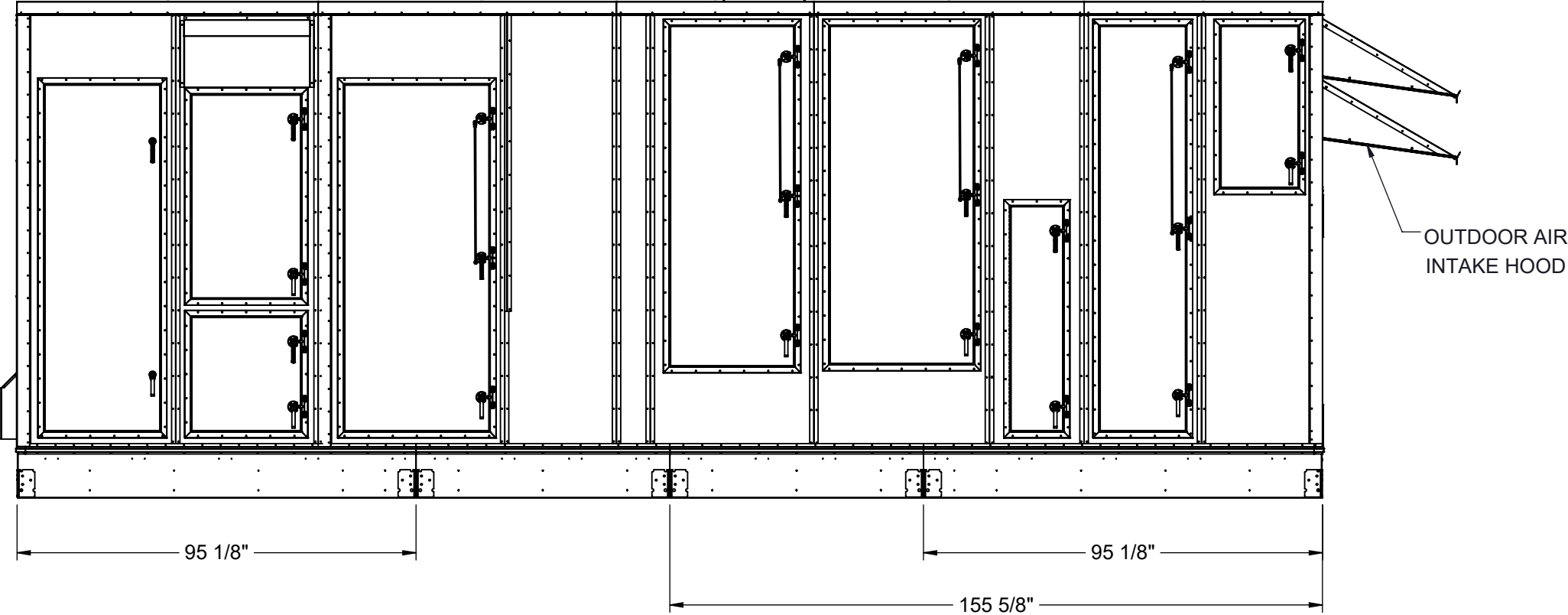
1 ALL EXPOSED METAL TO BE SPRAY FOAM INSULATION AFTER INSTALLATION

NOTES:
REFER TO SHEET 1 FOR GENERAL NOTES
SEE SHEET 6 NOTES FOR CURB SPECIFICATIONS

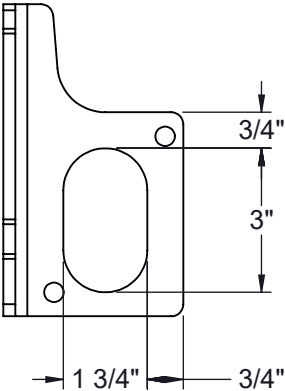
Desert Aire has a policy of continuous product and quality improvement. Specifications and dimensions are subject to change without notice. This drawing and information contained herein are the exclusive property of the Desert Aire Corporation. Any use detrimental to the interests of Desert Aire is prohibited.	All Dimensions in Inches All Angles 90° All outside corners 0.125" fillet Unless Otherwise Specified		Tolerance Unless Otherwise Specified X.X ±.125 X.XX ±.060 X.XXX ±.030 Angles ±1°		 <div>N120 W18485 FREISTADT RD GERMANTOWN, WI 53022 Tel: (262) 946-7400 Fax: (262) 946-7401</div>
			Drawn ASV		
	Third Angle Projection		Sheet 7/9		Description SP 40-50 TON SPLIT
	Part weight		Scale NTS		Rev. 1
ALL DIMENSIONS ARE IN INCHES TOLERANCE ± 1/8"		Page Title MOUNTING DETAILS GA			
		Drawing Number G1000-102			

SHIP LOOSE ITEMS
EXHAUST HOOD

DA PART NO	DESCRIPTION	QTY
HOOD	EXHAUST ASSEMBLY	1
807-023	SCREW #8-18X1/2 SS	36
990-105	CAULK WHITE	1



LUG DETAIL



NOTES:
REFER TO SHEET 1 FOR GENERAL NOTES AND HOOD DETAILS

Desert Aire has a policy of continuous product and quality improvement. Specifications and dimensions are subject to change without notice. This drawing and information contained herein are the exclusive property of the Desert Aire Corporation. Any use detrimental to the interests of Desert Aire is prohibited.

ALL DIMENSIONS ARE IN INCHES
TOLERANCE $\pm 1/8"$

All Dimensions in Inches
All Angles 90°
All outside corners 0.125" fillet
Unless Otherwise Specified



Third Angle Projection

Part weight

Tolerance Unless
Otherwise Specified
X.X $\pm .125$
X.XX $\pm .060$
X.XXX $\pm .030$
Angles $\pm 1^\circ$



N120 W18485 FREISTADT RD
GERMANTOWN, WI 53022
Tel: (262) 946-7400
Fax: (262) 946-7401

Drawn ASV	Date Released 1/19/2018	Description SP 40-50 TON SPLIT
Sheet 8/9	Page Title SHIPPING/LIFTING DETAILS GA	
Scale NTS	Rev. 1	Drawing Number G1000-102

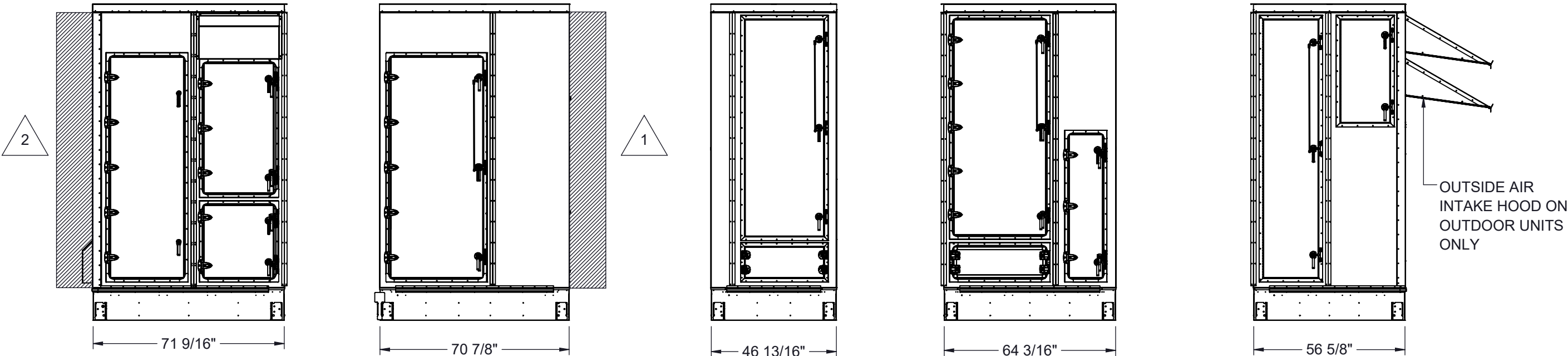
SHIP LOOSE ITEMS
EXHAUST HOOD

DA PART NO	DESCRIPTION	QTY
HOOD	EXHAUST ASSEMBLY	1
807-023	SCREW #8-18X1/2 SS	36
990-105	CAULK WHITE	1

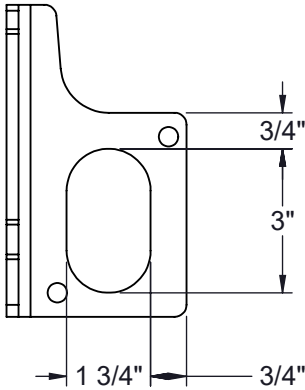
SHIP LOOSE ITEMS
SECTION ITEMS

DA PART NO	DESCRIPTION	QTY
807-007	BOLT 3/8-16X1 SS	16
807-008	WASHER 3/8 FLAT SS	16
807-009	WASHER LOCK SPLIT 3/8 SS	16
807-010	NUT 3/8-16 SS	16
807-023	SCREW #8-18X1/2 SS	688
807-223	SCREW #10-32X1/2 MACHINE HEX	16
950-089	TAPE SEAM SEALER 2"	120 FT (3 ROLLS)
950-090	TAPE SEAM SEALER 4"	15 FT
990-105	CAULK WHITE	8
352-098-040	BASE Z CVR SIDE, MID SEC	8
STRIPS	2.5 X 103" METAL SIDE STRIPS	8
STRIPS	2.5 X 92 1/2" METAL TOP STRIPS	4
STRIPS	1" X 3" X 24" METAL CORNER STRIPS	8

SHIPPING AND LIFTING DETAILS FOR MULTI-SECTION CONSTRUCTION OPTION ONLY



LUG DETAIL



1 BACKDRAFT DAMPER OPTION ADDS AN ADDITIONAL 9" TO FAN SECTION LENGTH

2 REMOTE CONDENSER/WATER CONNECTIONS WILL ADD AN ADDITIONAL MAXIMUM OF 8" TO LENGTH

NOTES:
REFER TO SHEET 1 FOR GENERAL NOTES AND HOOD DETAILS
UNIT SHIPPED IN SIX SECTIONS SEE I/O MANUAL FOR ASSEMBLY DETAILS

Desert Aire has a policy of continuous product and quality improvement. Specifications and dimensions are subject to change without notice. This drawing and information contained herein are the exclusive property of the Desert Aire Corporation. Any use detrimental to the interests of Desert Aire is prohibited.

ALL DIMENSIONS ARE IN INCHES
TOLERANCE $\pm 1/8"$

All Dimensions in Inches
All Angles 90°
All outside corners 0.125" fillet
Unless Otherwise Specified

Third Angle Projection

Part weight

Tolerance Unless Otherwise Specified
X.X $\pm .125$
X.XX $\pm .060$
X.XXX $\pm .030$
Angles $\pm 1^\circ$

Drawn	ASV	Date Released	1/19/2018
Sheet	9/9		
Scale	NTS		Rev. 1

N120 W18485 FREISTADT RD
GERMANTOWN, WI 53022
Tel: (262) 946-7400
Fax: (262) 946-7401

Description	SP 40-50 TON SPLIT
Page Title	SECTIONED LIFTING DETAILS GA
Drawing Number	G1000-102