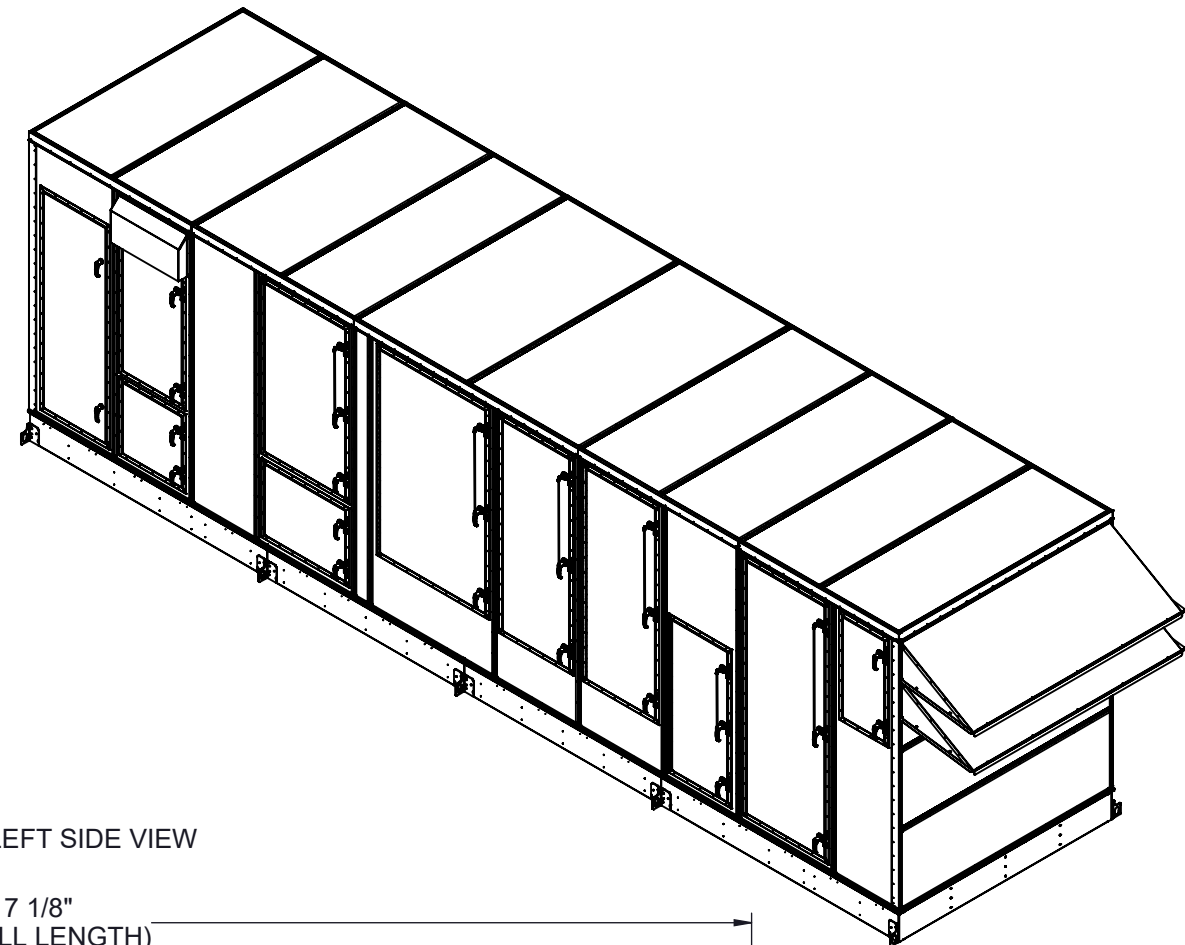
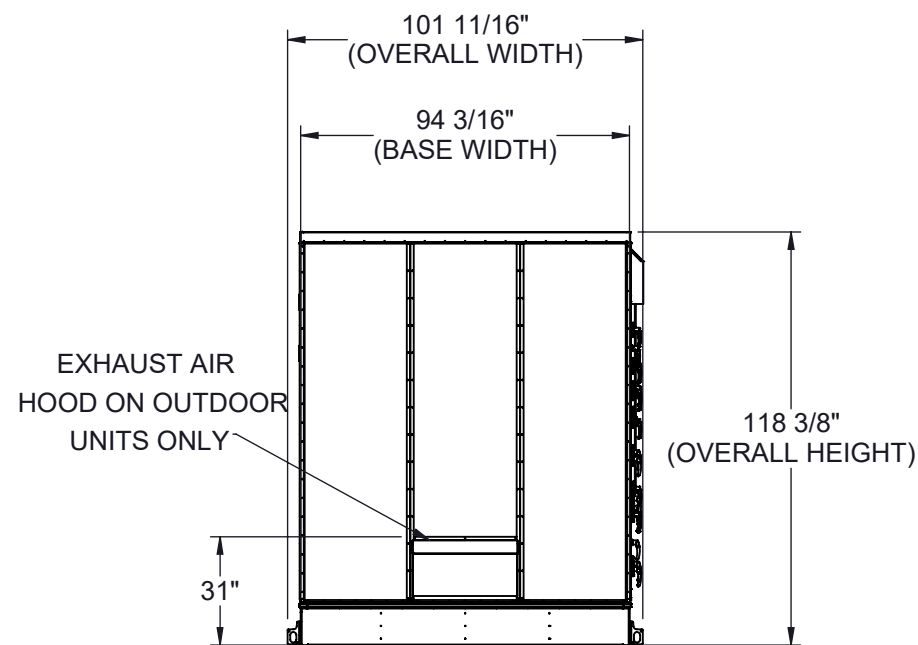


GENERAL NOTES FOR APPLICABLE SHEETS:

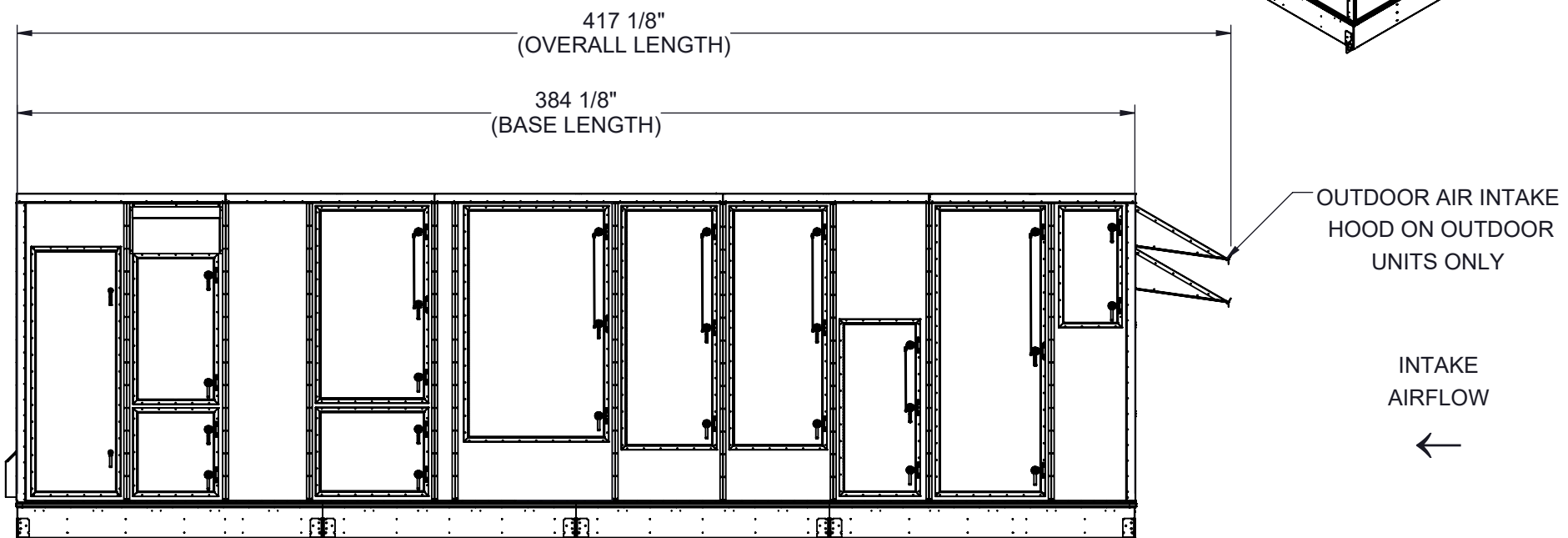
LEFT HAND ACCESS SHOWN IN ALL VIEWS  
 RIGHT HAND ACCESS OPTIONS LOCATED WITH SAME DIMENSIONS ON OPPOSITE SIDE UNLESS OTHERWISE SPECIFIED  
 WEIGHTS SHOWN REFLECT FULLY OPTIONED ESTIMATED UNIT WEIGHT



BACK VIEW



LEFT SIDE VIEW



UNIT SIZE	ESTIMATED WEIGHT (lbs.)
60 - 80 TONS	19000

Desert Aire has a policy of continuous product and quality improvement. Specifications and dimensions are subject to change without notice. This drawing and information contained herein are the exclusive property of the Desert Aire Corporation. Any use detrimental to the interests of Desert Aire is prohibited.

ALL DIMENSIONS ARE IN INCHES  
 TOLERANCE ± 1/8"

All Dimensions in Inches  
 All Angles 90°  
 All outside corners 0.125" fillet  
 Unless Otherwise Specified



Third Angle Projection

Part weight

Tolerance Unless Otherwise Specified  
 X.X ±.125  
 X.XX ±.060  
 X.XXX ±.030  
 Angles ±1°



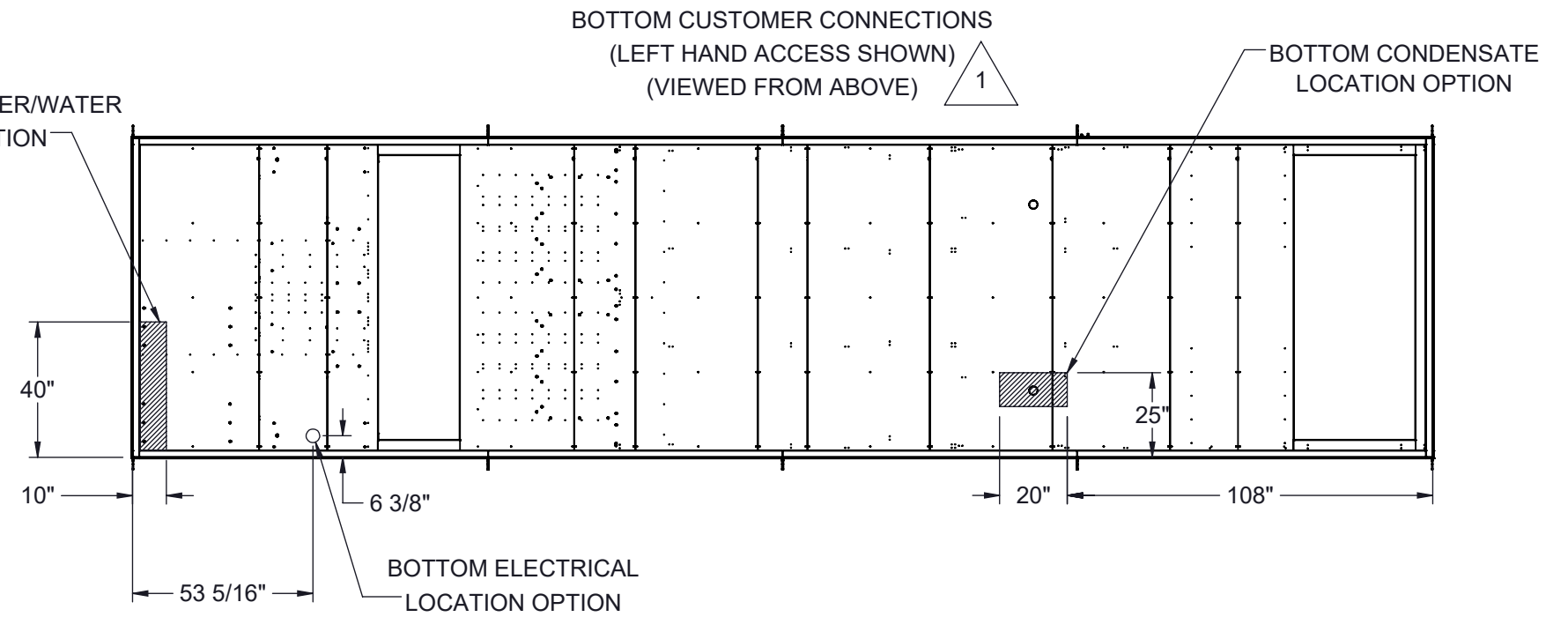
N120 W18485 FREISTADT RD  
 GERMANTOWN, WI 53022  
 Tel: (262) 946-7400  
 Fax: (262) 946-7401

Drawn <b>ASV</b>	Date Released <b>1/19/2018</b>	Description <b>SP 60-80 TON SPLIT ELECT HEAT</b>
Sheet <b>1/9</b>	Page Title <b>GENERAL ARRANGEMENT</b>	
Scale <b>NTS</b>	Rev. <b>7</b>	Drawing Number <b>G1000-009</b>

G1000-009

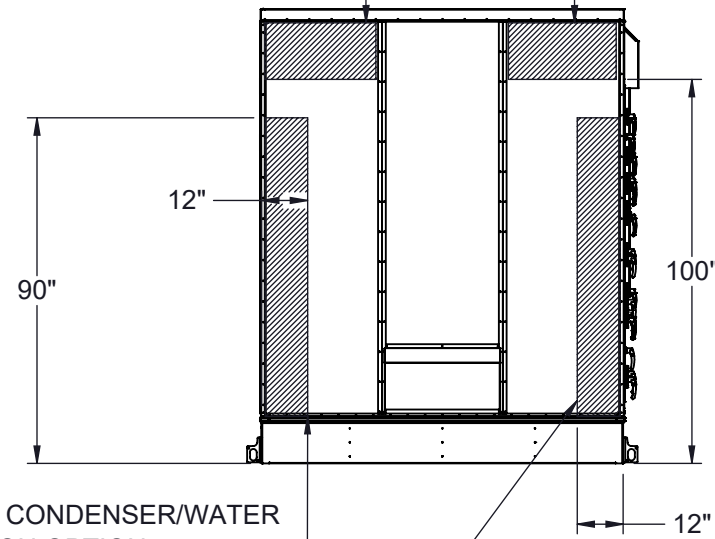
CUSTOMER CONNECTION LINE SIZE (in.)		
UNIT SIZE	60 TONS	70-80 TONS
CONDENSATE (PVC)	1 1/2	1 1/2
DISCHARGE LINE CIRCUIT A (CU)	1 1/8	1 5/8
LIQUID LINE CIRCUIT A (CU)	7/8	1 1/8
DISCHARGE LINE CIRCUIT B (CU)	1 5/8	1 5/8
LIQUID LINE CIRCUIT B (CU)	1 1/8	1 1/8
POOL WATER LINE CIRCUIT A (CPVC)	2	3
POOL WATER LINE CIRCUIT B (CPVC)	3	3
COOLING LOOP LINE (CU)	3	3

BOTTOM REMOTE CONDENSER/WATER CONNECTION LOCATION OPTION



BACK CONNECTIONS VIEW  
(NO ORIENTATION CHANGE FOR RH OR LH ACCESS)

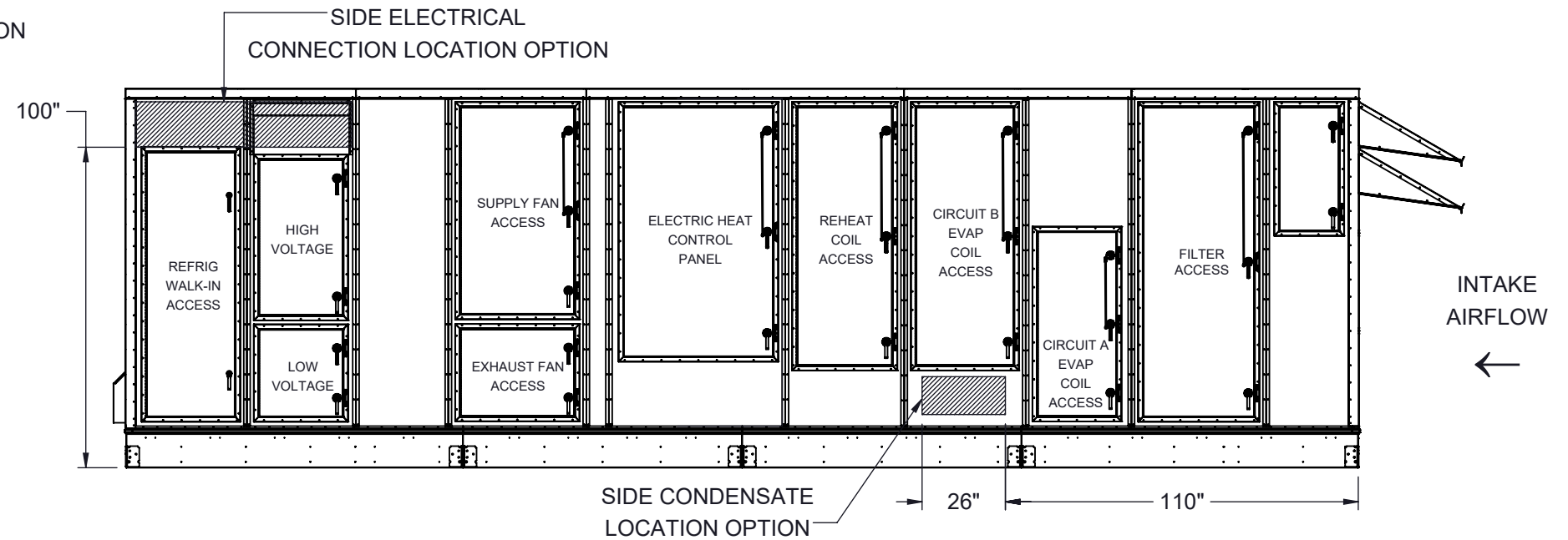
RH ACCESS BACK ELECTRICAL CONNECTION LOCATION OPTION  
LH ACCESS BACK ELECTRICAL CONNECTION LOCATION OPTION



RIGHT BACK REMOTE CONDENSER/WATER CONNECTION LOCATION OPTION

LEFT BACK REMOTE CONDENSER/WATER CONNECTION LOCATION OPTION

LEFT SIDE CONNECTION VIEW  
(LEFT HAND ACCESS SHOWN)



NOTES:  
REFER TO SHEET 1 FOR GENERAL NOTES  
LEFT HAND ACCESS SHOWN IN ALL VIEWS  
RIGHT HAND ACCESS OPTIONS LOCATED WITH SAME DIMENSIONS ON OPPOSITE SIDE UNLESS OTHERWISE SPECIFIED



FILTER INFORMATION						
UNIT SIZE	OA QTY	OA SIZE	REPLACEMENT PART NUMBER	RA QTY	RA SIZE	REPLACEMENT PART NUMBER
60-80 TONS	15	18 X 24 X 4	870-056	15	18 X 24 X 4	870-056

Desert Aire has a policy of continuous product and quality improvement. Specifications and dimensions are subject to change without notice. This drawing and information contained herein are the exclusive property of the Desert Aire Corporation. Any use detrimental to the interests of Desert Aire is prohibited.

All Dimensions in Inches  
All Angles 90°  
All outside corners 0.125" fillet  
Unless Otherwise Specified

Tolerance Unless Otherwise Specified  
X.X ±.125  
X.XX ±.060  
X.XXX ±.030  
Angles ±1°

**DESERT AIRE**  
N120 W18485 FREISTADT RD  
GERMANTOWN, WI 53022  
Tel: (262) 946-7400  
Fax: (262) 946-7401



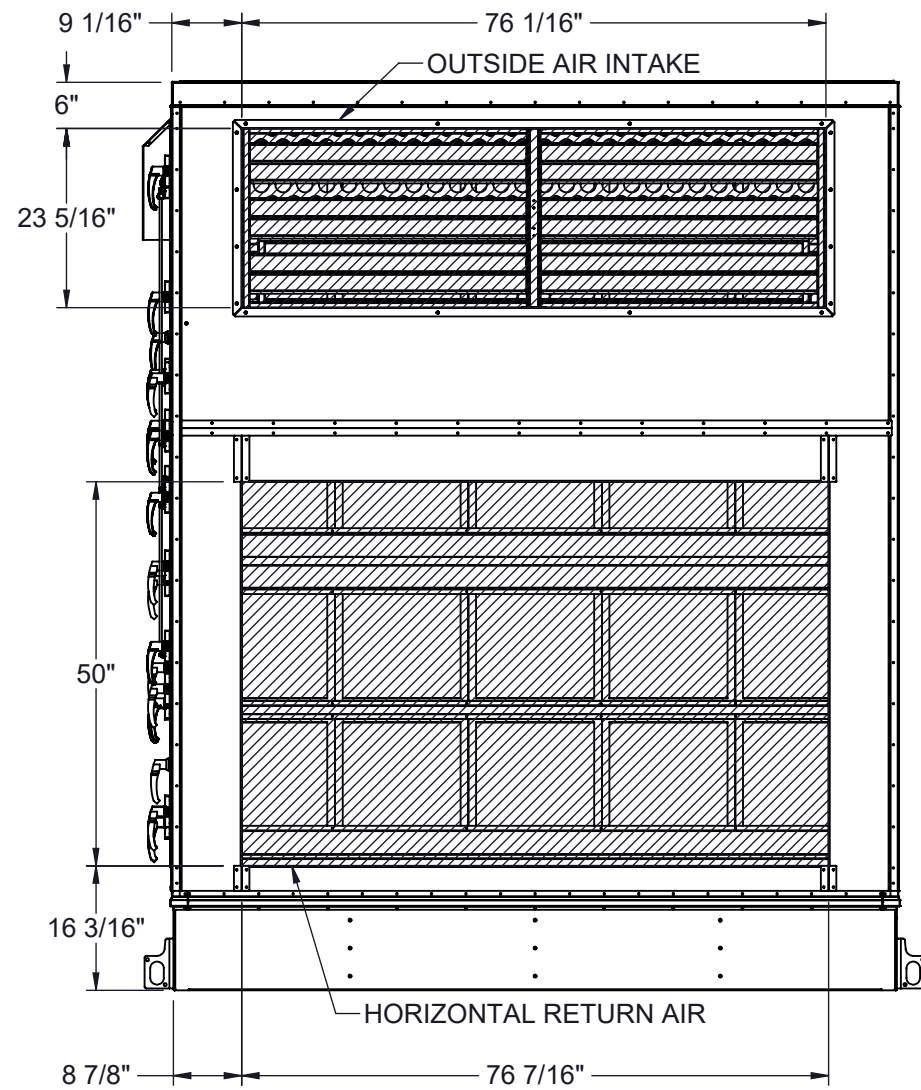
Third Angle Projection

Part weight

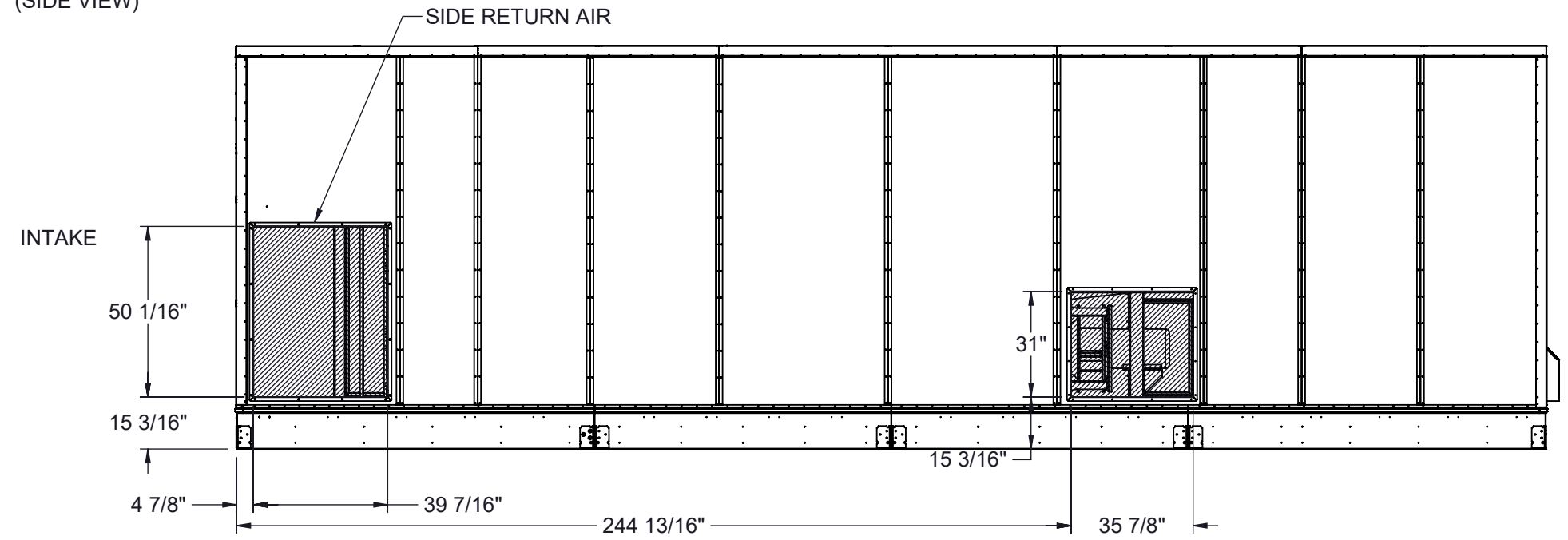
Drawn	ASV	Date Released	1/19/2018	Description	SP 60-80 TON SPLIT ELECT HEAT
Sheet	2/9		Page Title	CUSTOMER INTERFACE GA	
Scale	NTS	Rev.	7	Drawing Number	G1000-009

ALL DIMENSIONS ARE IN INCHES  
TOLERANCE ± 1/8"

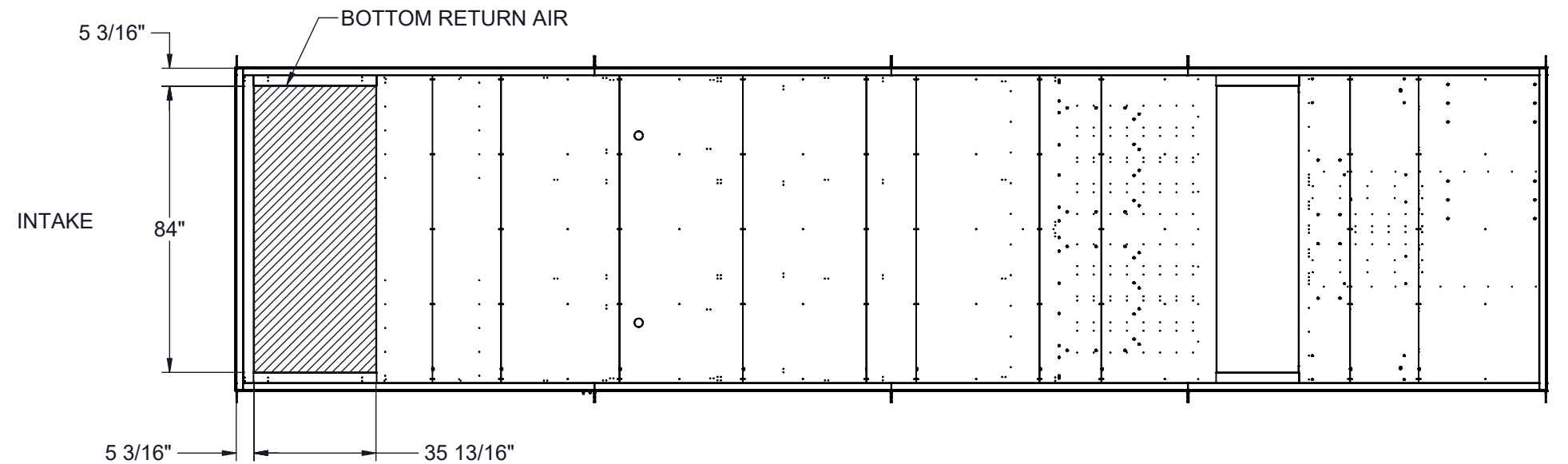
HORIZONTAL RETURN AIR OPTION  
(INTAKE VIEW)



SIDE RETURN AIR OPTION  
(SIDE VIEW)



BOTTOM RETURN AIR OPTION  
(VIEW FROM ABOVE)



NOTES:  
REFER TO SHEET 1 FOR GENERAL NOTES  
HOODS REMOVED FOR CLARITY  
ACCESS SIDE RETURN AIR OPTION WILL SHIFT FILTER SECTION DOORS TO NON-ACCESS SIDE  
OUTSIDE AIR INTAKE LOCATED IN THE SAME POSITION REGARDLESS OF OPTIONS

Desert Aire has a policy of continuous product and quality improvement. Specifications and dimensions are subject to change without notice. This drawing and information contained herein are the exclusive property of the Desert Aire Corporation. Any use detrimental to the interests of Desert Aire is prohibited.

ALL DIMENSIONS ARE IN INCHES  
TOLERANCE ± 1/8"

All Dimensions in Inches  
All Angles 90°  
All outside corners 0.125" fillet  
Unless Otherwise Specified

Third Angle Projection

Part weight

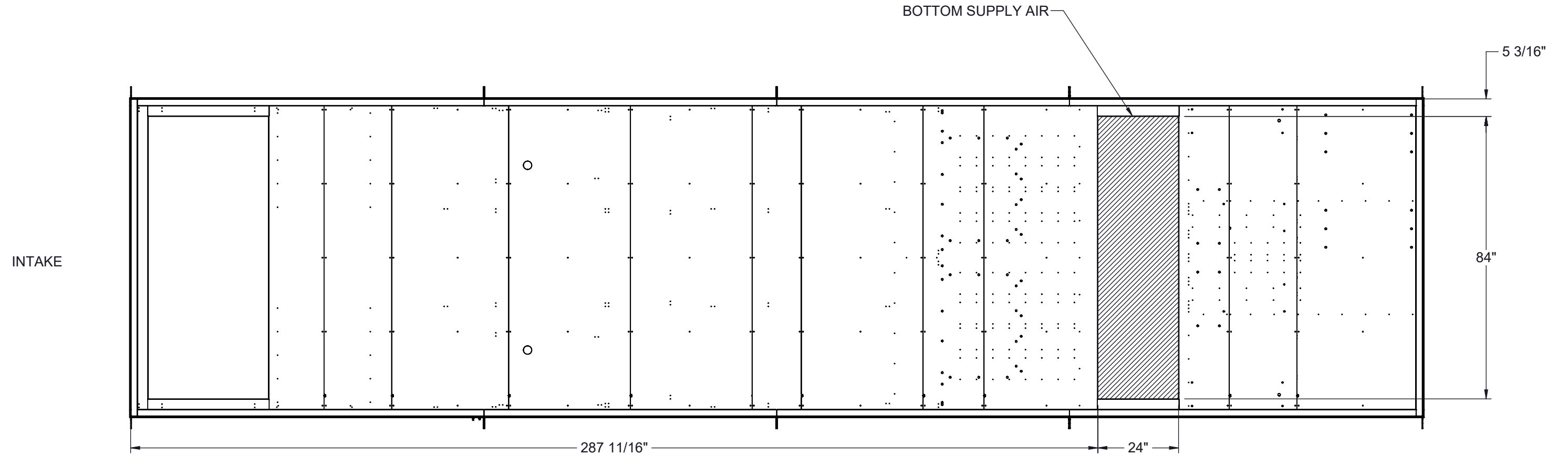
Tolerance Unless Otherwise Specified  
X.X ±.125  
X.XX ±.060  
X.XXX ±.030  
Angles ±1°

Drawn	ASV	Date Released	1/19/2018
Sheet	3/9		
Scale	NTS		
Rev.	7		

**DESERT AIRE**  
N120 W18485 FREISTADT RD  
GERMANTOWN, WI 53022  
Tel: (262) 946-7400  
Fax: (262) 946-7401

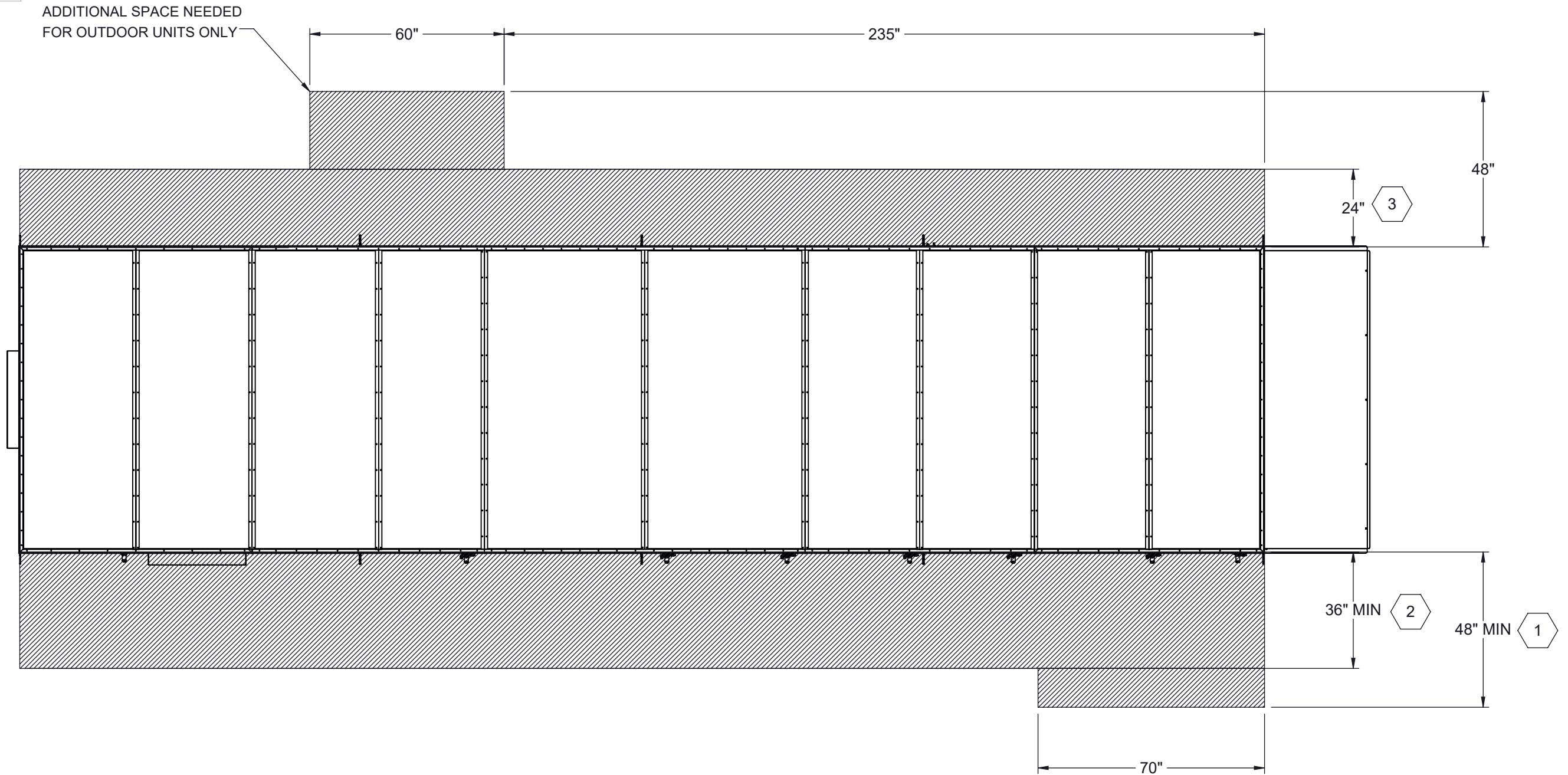
Description	SP 60-80 TON SPLIT ELECT HEAT
Page Title	INTAKE OPTIONS GA
Drawing Number	G1000-009

BOTTOM SUPPLY OPTION  
(VIEW FROM ABOVE)



NOTES:  
 REFER TO SHEET 1 FOR GENERAL NOTES  
 LEFT HAND ACCESS SHOWN IN ALL VIEWS UNLESS OTHERWISE SPECIFIED  
 RIGHT HAND ACCESS OPTIONS LOCATED WITH SAME DIMENSIONS ON OPPOSITE SIDE UNLESS OTHERWISE SPECIFIED  
 HOODS REMOVED FOR CLARITY  
 ACCESS SIDE SUPPLY AIR OPTION WILL SHIFT FAN SECTION DOORS TO NON-ACCESS SIDE

Desert Aire has a policy of continuous product and quality improvement. Specifications and dimensions are subject to change without notice. This drawing and information contained herein are the exclusive property of the Desert Aire Corporation. Any use detrimental to the interests of Desert Aire is prohibited.	All Dimensions in Inches All Angles 90° All outside corners 0.125" fillet Unless Otherwise Specified	Tolerance Unless Otherwise Specified X.X ±.125 X.XX ±.060 X.XXX ±.030 Angles ±1°	N120 W18485 FREISTADT RD GERMANTOWN, WI 53022 Tel: (262) 946-7400 Fax: (262) 946-7401
ALL DIMENSIONS ARE IN INCHES TOLERANCE ± 1/8"	Third Angle Projection 	Sheet <b>4/9</b>	Page Title <b>DISCHARGE OPTIONS GA</b>
		Scale <b>NTS</b>	Rev. <b>7</b>



- 1 96" RECOMMENDED FOR FILTER ACCESS.
- 2 120" CLEARANCE ON ACCESS SIDE RECOMMENDED FOR FAN AND COIL SERVICE
- 3 REQUIRED FOR ASSEMBLY OF SECTIONED UNITS ONLY

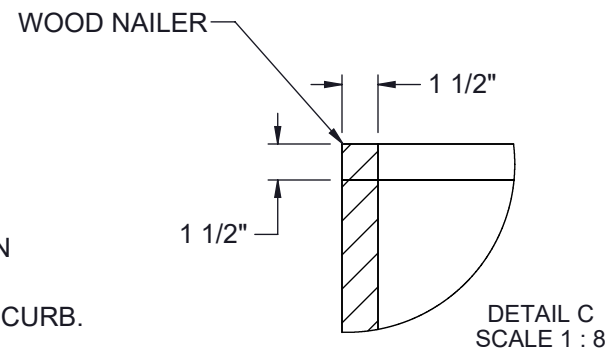
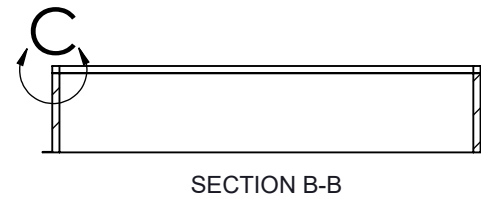
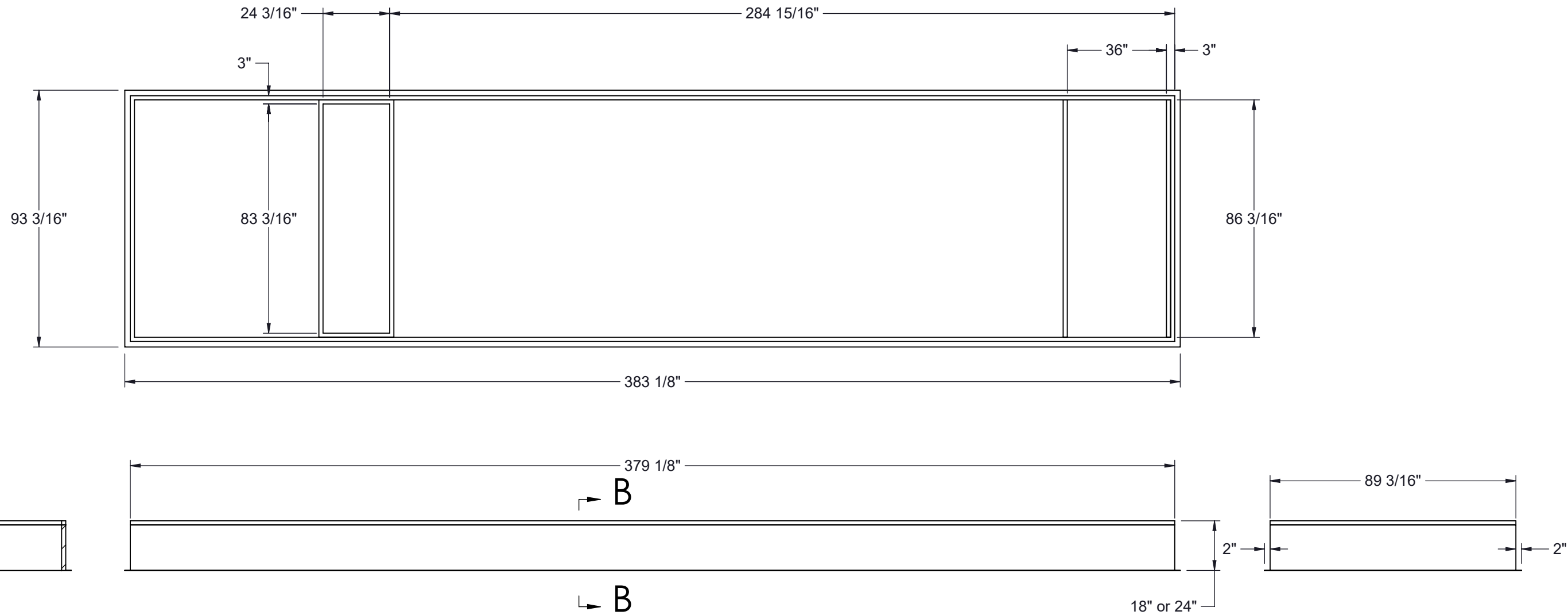
NOTES:  
 REFER TO SHEET 1 FOR GENERAL NOTES  
 LEFT HAND ACCESS SHOWN IN ALL VIEWS  
 RIGHT HAND ACCESS OPTIONS LOCATED WITH SAME DIMENSIONS ON OPPOSITE SIDE UNLESS OTHERWISE SPECIFIED

Desert Aire has a policy of continuous product and quality improvement. Specifications and dimensions are subject to change without notice. This drawing and information contained herein are the exclusive property of the Desert Aire Corporation. Any use detrimental to the interests of Desert Aire is prohibited.	All Dimensions in Inches All Angles 90° All outside corners 0.125" fillet Unless Otherwise Specified	Tolerance Unless Otherwise Specified X.X ±.125 X.XX ±.060 X.XXX ±.030 Angles ±1°	N120 W18485 FREISTADT RD GERMANTOWN, WI 53022 Tel: (262) 946-7400 Fax: (262) 946-7401
ALL DIMENSIONS ARE IN INCHES TOLERANCE ± 1/8"	Third Angle Projection	Sheet <b>5/9</b> Page Title <b>UNIT CLEARANCE GA</b>	Scale <b>NTS</b> Rev. <b>7</b> Drawing Number <b>G1000-009</b>
		Part weight	

NOTES:  
REFER TO SHEET 1 FOR GENERAL NOTES

UNIT TON	18" CURB	24" CURB
60-80	CB-80NEBN-18	CB-80NEBN-24

1. 14 GA GALVANIZED STEEL CONSTRUCTION
2. PRIME PAINTED AFTER FABRICATION
3. PRESSURE TREATED WOOD NAILERS
4. 1-1/2" THICK 3LB/FT<sup>3</sup> FIBERGLASS PERIMETER INSULATION
5. INTERNAL ANGLE REINFORCEMENT
6. CURB TO BE SHIPPED KNOCKED DOWN



NUMBER AND LOCATION OF CROSS SUPPORTS IS DEPENDANT UPON THE GUAGE OF MATERIAL USED TO CONSTRUCT THE CURB, DUCT SUPPORT CONFIGURATION LENGTH OF CURB, AND WIDTH OF CURB. INSTALLATION INSTRUCTIONS INCLUDED WITH CURB SHIPMENT INDICATE THE REQUIRED POSITION FOR FIELD ASSEMBLED CURBS.

Desert Aire has a policy of continuous product and quality improvement. Specifications and dimensions are subject to change without notice. This drawing and information contained herein are the exclusive property of the Desert Aire Corporation. Any use detrimental to the interests of Desert Aire is prohibited.

All Dimensions in Inches  
All Angles 90°  
All outside corners 0.125" fillet  
Unless Otherwise Specified

Tolerance Unless Otherwise Specified  
X.X ±.125  
X.XX ±.060  
X.XXX ±.030  
Angles ±1°

**DESERT AIRE**  
N120 W18485 FREISTADT RD  
GERMANTOWN, WI 53022  
Tel: (262) 946-7400  
Fax: (262) 946-7401

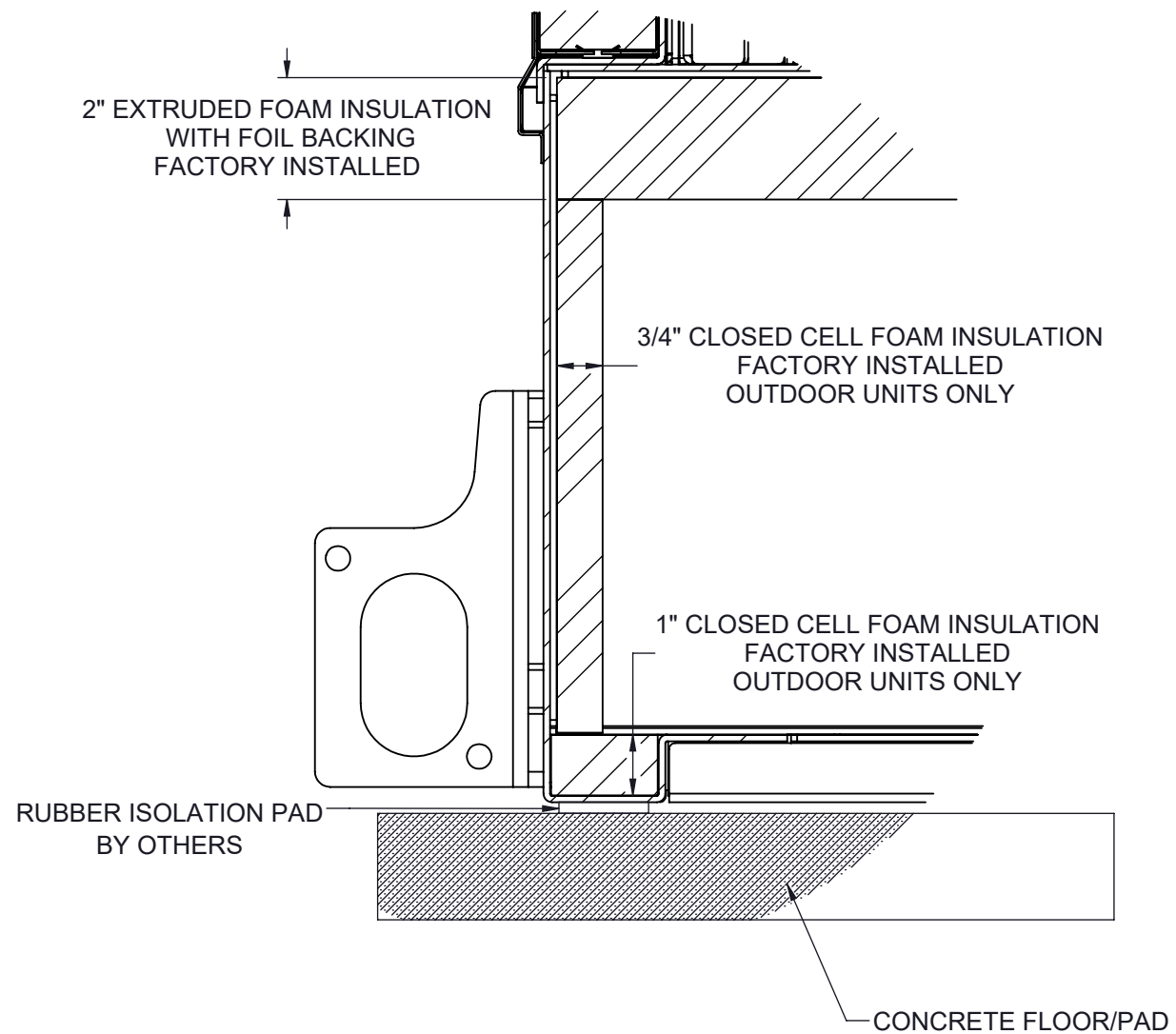
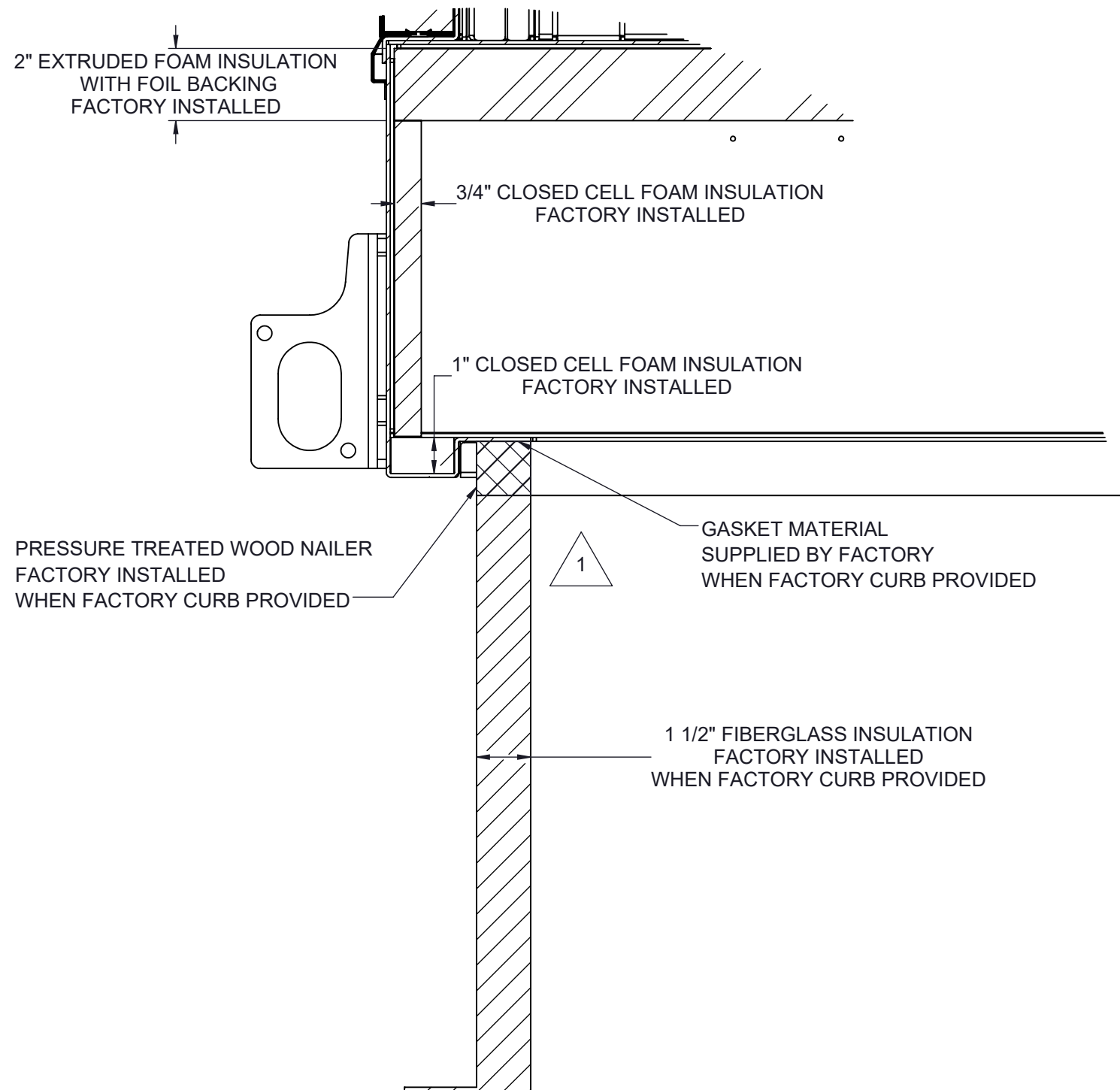
Third Angle Projection

ALL DIMENSIONS ARE IN INCHES  
TOLERANCE ± 1/8"

Part weight

Drawn	ASV	Date Released	1/19/2018	Description	SP 60-80 TON SPLIT ELECT HEAT
Sheet	6/9		Page Title		
Scale	NTS		Rev.	7	
Drawing Number			G1000-009		

CURB MOUNT PAD MOUNT



1 ALL EXPOSED METAL TO BE SPRAY FOAM INSULATION AFTER INSTALLATION

NOTES:  
REFER TO SHEET 1 FOR GENERAL NOTES  
SEE SHEET 6 NOTES FOR CURB SPECIFICATIONS

Desert Aire has a policy of continuous product and quality improvement. Specifications and dimensions are subject to change without notice. This drawing and information contained herein are the exclusive property of the Desert Aire Corporation. Any use detrimental to the interests of Desert Aire is prohibited.

All Dimensions in Inches  
All Angles 90°  
All outside corners 0.125" fillet  
Unless Otherwise Specified

Tolerance Unless Otherwise Specified  
X.X ±.125  
X.XX ±.060  
X.XXX ±.030  
Angles ±1°



N120 W18485 FREISTADT RD  
GERMANTOWN, WI 53022  
Tel: (262) 946-7400  
Fax: (262) 946-7401



Third Angle Projection

Part weight

ALL DIMENSIONS ARE IN INCHES  
TOLERANCE ± 1/8"

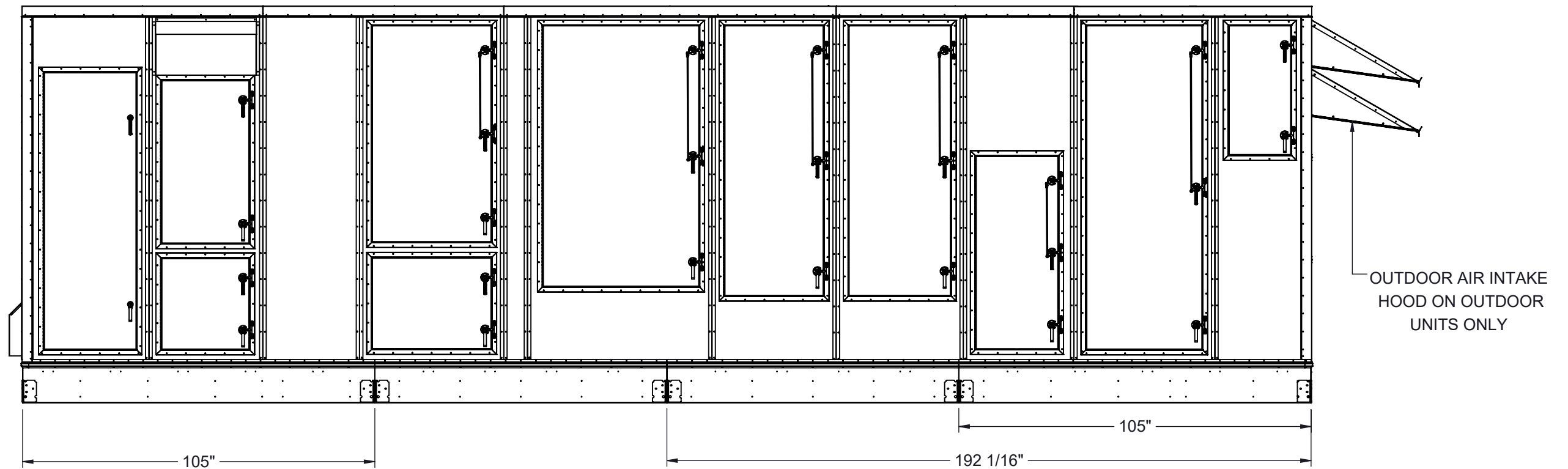
Drawn	ASV	Date Released	1/19/2018	Description	SP 60-80 TON SPLIT ELECT HEAT
Sheet	7/9			Page Title	MOUNTING DETAILS GA
Scale	NTS		Rev.	7	Drawing Number
					G1000-009

# SHIP LOOSE ITEMS

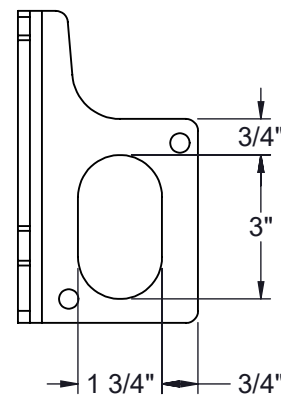
## EXHAUST HOOD

### OUTDOOR UNITS ONLY

DA PART NO	DESCRIPTION	QTY
HOOD	EXHAUST ASSEMBLY	1
807-023	SCREW #8-18X1/2 SS	36
990-105	CAULK WHITE	1



LUG DETAIL



Desert Aire has a policy of continuous product and quality improvement. Specifications and dimensions are subject to change without notice. This drawing and information contained herein are the exclusive property of the Desert Aire Corporation. Any use detrimental to the interests of Desert Aire is prohibited.

ALL DIMENSIONS ARE IN INCHES  
TOLERANCE  $\pm 1/8"$

All Dimensions in Inches  
All Angles 90°  
All outside corners 0.125" fillet  
Unless Otherwise Specified

Third Angle Projection

Part weight

Tolerance Unless Otherwise Specified  
X.X  $\pm .125$   
X.XX  $\pm .060$   
X.XXX  $\pm .030$   
Angles  $\pm 1^\circ$

Drawn **ASV** Date Released **1/19/2018**

Sheet **8/9**

Scale **NTS**

Rev. **7**



N120 W18485 FREISTADT RD  
GERMANTOWN, WI 53022  
Tel: (262) 946-7400  
Fax: (262) 946-7401

Description **SP 60-80 TON SPLIT ELECT HEAT**

Page Title **SHIPPING/LIFTING DETAILS GA**

Drawing Number **G1000-009**

**NOTES:**  
REFER TO SHEET 1 FOR GENERAL NOTES AND HOOD DETAILS



# SHIP LOOSE ITEMS

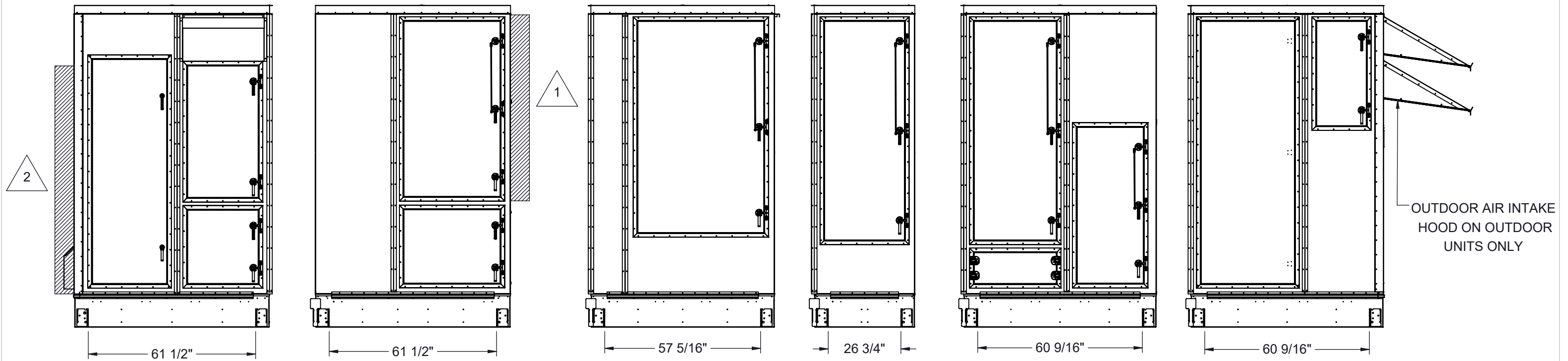
## EXHAUST HOOD OUTDOOR UNITS ONLY

DA PART NO	DESCRIPTION	QTY
HOOD	EXHAUST ASSEMBLY	1
807-023	SCREW #8-18X1/2 SS	36
990-105	CAULK WHITE	1

## SECTION ITEMS

DA PART NO	DESCRIPTION	QTY
807-023	SCREW #8-18X1/2 SS	860
807-007	BOLT 3/8-16X1 SS	20
807-008	WASHER 3/8 FLAT SS	20
807-009	WASHER LOCK SPLIT 3/8 SS	20
807-010	NUT 3/8-16 SS	20
807-223	SCREW #10-32x1/2 MACHINE HEX	20
950-089	TAPER SEAM SEALER 2"	150 FT (3 ROLLS)
950-090	TAPE SEAM SEALER 4"	17 FT
990-105	CAULK WHITE	9
352-098-040	BASE Z CVR SIDE,MID SEC	10
STRIPS	2.5" X 103" METAL SIDE STRIPS	10
STRIPS	2.5" X 92 1/2" METAL TOP STRIPS	5
STRIPS	1" X 3" X 24" METAL CORNER STRIPS	10

### SHIPPING AND LIFTING DETAILS FOR MULTI-SECTION CONSTRUCTION OPTION ONLY



- 1** BACKDRAFT DAMPER OPTION ADDS AN ADDITIONAL 9" TO FAN SECTION LENGTH
- 2** REMOTE CONDENSER/WATER CONNECTIONS WILL ADD AN ADDITION MAXIMUM OF 8"

Desert Aire has a policy of continuous product and quality improvement. Specifications and dimensions are subject to change without notice. This drawing and information contained herein are the exclusive property of the Desert Aire Corporation. Any use detrimental to the interests of Desert Aire is prohibited.

All Dimensions in Inches  
All Angles 90°  
All outside corners 0.125" fillet  
Unless Otherwise Specified

Tolerance Unless Otherwise Specified  
X.X ±.125  
X.XX ±.060  
X.XXX ±.030  
Angles ±1°

**DESERT AIRE**  
N120 W18485 FREISTADT RD  
GERMANTOWN, WI 53022  
Tel: (262) 946-7400  
Fax: (262) 946-7401

Third Angle Projection

Drawn	ASV	Date Released	1/19/2018	Description	SP 60-80 TON SPLIT ELECT HEAT
Sheet	9/9			Page Title	SECTIONED LIFTING DETAILS GA
Scale	NTS		Rev.	7	Drawing Number
					G1000-009

ALL DIMENSIONS ARE IN INCHES  
TOLERANCE ± 1/8"

**NOTES:**  
REFER TO SHEET 1 FOR GENERAL NOTES AND HOOD DETAILS  
UNIT SHIPPED IN SIX SECTIONS SEE I/O MANUAL FOR ASSEMBLY DETAILS