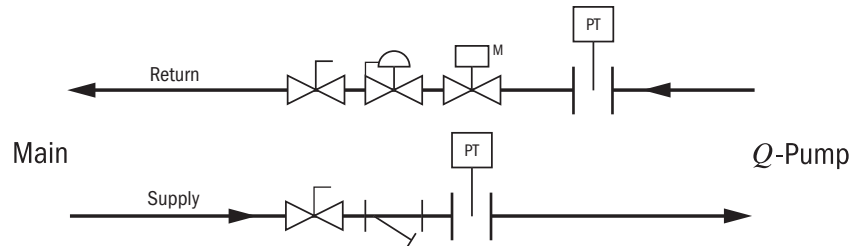


2-WAY FLOW CONTROL PACKAGE

2-WAY FLOW CONTROL PACKAGE OPTION



Package Components

- **Y-Ball Strainer (20 Mesh)**
- **Automatic balancing control valve**
- **Blowdown valve**
- **Automatic 2-way control valve w/actuator**
 - **Transformer and signal from Q-Pump**
- **PT plugs on inlet / outlet**

Maintaining proper, constant flow through water-source heat pump equipment optimizes efficiency and capacity. In today's larger, dynamic loops that include many valves, branches, and variable speed pumps, maintaining this constant flow can be challenging. A simple ball valve or circuit setter may not be sufficient to regulate the flow in these situations. The result may be lower efficiency, nuisance alarm trips, or even possible long-term equipment damage.

Desert Aire has selected Hays Fluid Controls as its partner for its flow regulation control package vendor because of the importance of maintaining precise flow through our Q-Pump. These flow control packages dynamically regulate water flow during changing conditions to allow the heat pumps to achieve the highest energy efficiency in both heating and cooling while eliminating the nuisance alarms so typical of unregulated loop piping systems.

The Hays Mesurflo™ flow regulation valve provides a constant flow rate over a wide range of pressure differentials (2 to 80 psid). As the pressure drop increases, the rubber diaphragm will flex into the contoured orifice plate to decrease the flow path. Both the rubber diaphragm and the contoured orifice plate are rigidly controlled to provide a constant flow rate. The "flexing" action of the rubber diaphragm against the fixed orifice plate makes the Mesurflo™ difficult to clog and resistant to cavitation damage.

The Hays Mesurflo™ is a constant flow rate device. Since it is a variable orifice that changes to govern the flow, it cannot be described with the C_v or a pressure drop at a given flow for piping systems design purposes. The designer may assume a constant flow rate over the differential pressure.

The two way flow package includes an integral actuator to terminate the flow to the Q-Pump™ when the DOAS system is commanded to the unoccupied mode for those water loops with variable speed drives on the water pumps.

The control packages simplify the selection and installation of the piping system. Each component in the package has been predefined to work with the corresponding Desert Aire system. All of the recommended accessories for typical loops are included in the package. The packages for models QS 02 through 15 further reduces installation time by including a flexible hose with NPT unit connections. The control package and equipping the unit with optional NPT connections allows for quick, leak-free connections, vibration isolation, and fewer issues with misalignment.

Standard Features of Package

- Operating range 32°F to 225°F
- ± 10% flow accuracy
- Valve body suitable for 400 psig
- Pipe Type
 - 15 ton and less – 24 inch Flexible Hose Kits provided by Desert Aire
 - 20 ton and larger – Hard pipe provided by others
- Extended Pressure / Temperature Ports
- Material Specifications
 - Ball – chrome plated brass
 - P/T ports – brass
 - O-rings – EPDM
 - Orifice – Polyphenylsulfone
- Actuator
 - 24VAC
 - 2 position
 - Manual operating lever / position indicator
 - Location - NEMA 2. IEC IP31

Package Specifications

Tons	DA Part #	GPM	Connection Size		Valve Body	Connection Type
			Main (In. FNPT)	Q-Pump (In. MNPT)		
02	DFQ02FD	7	3/4"	3/4"	Brass	Flex Hose
03	DFQ03FD	11	3/4"	3/4"	Brass	Flex Hose
05	DFQ05FD	19	1"	1"	Brass	Flex Hose
08	DFQ08FD	26	1-1/4"	1-1/4"	Gray Iron	Flex Hose
10	DFQ10FD	34	1-1/4"	1-1/4"	Gray Iron	Flex Hose
15	DFQ15FD	49	1-1/2"	1-1/2"	Gray Iron	Flex Hose

Tons	DA Part #	GPM	Connection Size		Valve Body	Connection Type
			Main (In. FNPT)	Q-Pump (In. MNPT)		
20	DFQ20PD	69	2-1/2"	2-1/2"	Ductile Iron	Hard Pipe
25	DFQ25PD	84	2-1/2"	2-1/2"	Ductile Iron	Hard Pipe
30	DFQ30PD	102	2-1/2"	2-1/2"	Ductile Iron	Hard Pipe
36	DFQ36PD	118	2-1/2"	2-1/2"	Ductile Iron	Hard Pipe
40	DFQ40PD	137	3"	3"	Ductile Iron	Hard Pipe
46	DFQ46PD	153	3"	3"	Ductile Iron	Hard Pipe
50	DFQ50PD	168	3"	3"	Ductile Iron	Hard Pipe

Tons	DA Part #	GPM	Connection Size		Valve Body	Connection Type
			Main (In. FLGT)	Q-Pump (In. FLGT)		
56	DFQ56PD	186	4"	4"	Carbon Steel	Flanged
60	DFQ60PD	203	4"	4"	Carbon Steel	Flanged

Q-Pump is a U. S. Registered trademark of Desert Aire Corp. and Mesurflo is a Registered trademark of Hays Fluid Controls. The automatic balancing valves are protected by U. S. Patent 6,311,712

OPTIMIZING SOLUTIONS THROUGH SUPERIOR DEHUMIDIFICATION TECHNOLOGY

N120 W18485 Friestadt Road, Germantown, WI 53022 sales@desert-aire.com

Ph: (262) 946-7400 - www.desert-aire.com



PACKAGE SPECIFICATIONS

WARNING: Cancer and Reproductive Harm - www.P65Warnings.ca.gov