

AIR FLOW	UNIT SIZE (TONS)	UNIT CABINET SIZES	L1	W1	H1	L2	W2
END FLOW	02	36-H	126 1/8	49 1/8	51 1/8	144 1/2	55 1/8
	03		126 1/8	49 1/8	51 1/8	144 1/2	55 1/8
	06	44-H	133 7/8	54 1/2	55	152 1/4	60 1/2
	08	50-H	137 1/4	61 1/8	63	160 5/8	67 1/8
	10	60-H	140 7/8	72 1/2	75 1/4	164 3/8	78 1/2
	16	72-H	150 5/8	87 1/2	83 3/8	179	93 1/2
	20	78-H	162 3/8	90 1/2	92 5/8	191 1/4	96 1/2
	26		162 3/8	90 1/2	92 5/8	191 1/4	96 1/2
	30		162 3/8	90 1/2	92 5/8	191 1/4	96 1/2
DOWN FLOW	02	36-H	126 1/8	49 1/8	51 1/8	144 1/2	55 1/8
	03		126 1/8	49 1/8	51 1/8	144 1/2	55 1/8
	06	44-H	133 7/8	54 1/2	55	152 1/4	60 1/2
	08	50-H	160	61 1/8	63	183 3/8	67 1/8
	10	60-H	164 1/2	72 1/2	75 1/4	187 7/8	78 1/2
	16	72-H	175 7/8	87 1/2	83 3/8	204 1/4	93 1/2
	20	78-H	189 1/2	90 1/2	92 5/8	218 3/8	96 1/2
	26		189 1/2	90 1/2	92 5/8	218 3/8	96 1/2
	30		189 1/2	90 1/2	92 5/8	218 3/8	96 1/2
TOP FLOW	02	36-H	126 1/8	49 1/8	51 1/8	144 1/2	55 1/8
	03		126 1/8	49 1/8	51 1/8	144 1/2	55 1/8
	06	44-H	133 7/8	54 1/2	55	152 1/4	60 1/2
	08	50-H	137 1/4	61 1/8	63	160 5/8	67 1/8
	10	60-H	140 7/8	72 1/2	75 1/4	164 3/8	78 1/2
	16	72-H	150 5/8	87 1/2	83 3/8	179	93 1/2
	20	78-H	162 3/8	90 1/2	92 5/8	191 1/4	96 1/2
	26		162 3/8	90 1/2	92 5/8	191 1/4	96 1/2
	30		162 3/8	90 1/2	92 5/8	191 1/4	96 1/2

GENERAL NOTES AS REFERENCED BY INDIVIDUAL SHEETS:

- ① PORTION OF SECTIONED DRAWING HAS BEEN OMITTED FOR CLARITY.
- ② HOODS OMMITTED FOR CLARITY.
- ③ VIEW IS FOR PICTORAL PURPOSES. REFER TO PAGE 1 FOR UNIT TYPE SPECIFIC VIEW.
- ④ REFER TO SUBITTAL FOR CUSTOMER CONNECTION LOCATIONS.
- ⑤ DIMENSIONS ARE TO ACCESS SIDE OF UNIT.
- ⑥ RH ACCESS SHOWN FOR DISPLAY PURPOSES. ACCESS DOOR CONFIGURATION MAY CHANGE DEPENDING ON UNIT SIZE.
- ⑦ REFER TO SHEET 3,4,5 FOR INTAKE AND DISCHARGE CONNECTION DIMENSIONS.

Desert Aire has a policy of continuous product and quality improvement. Specifications and dimensions are subject to change without notice. This drawing and information contained herein are the exclusive property of the Desert Aire Corporation. Any use detrimental to the interests of Desert Aire is prohibited.

ALL DIMENSIONS ARE IN INCHES
TOLERANCE ± 1/8"

All Dimensions in Inches
All Angles 90°
All outside corners 0.125" fillet
Unless Otherwise Specified

Third Angle Projection

Part weight

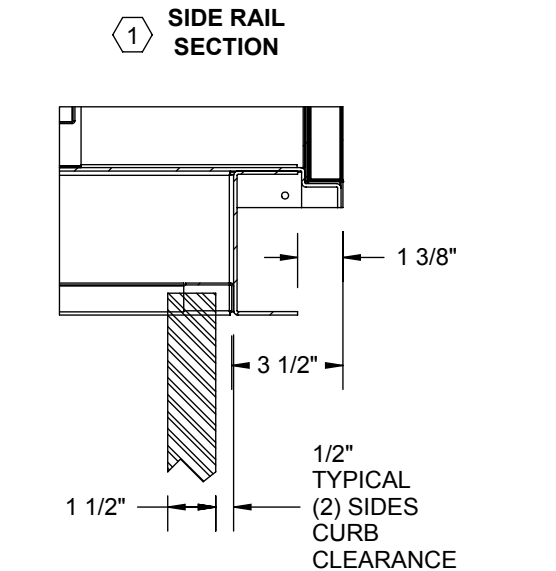
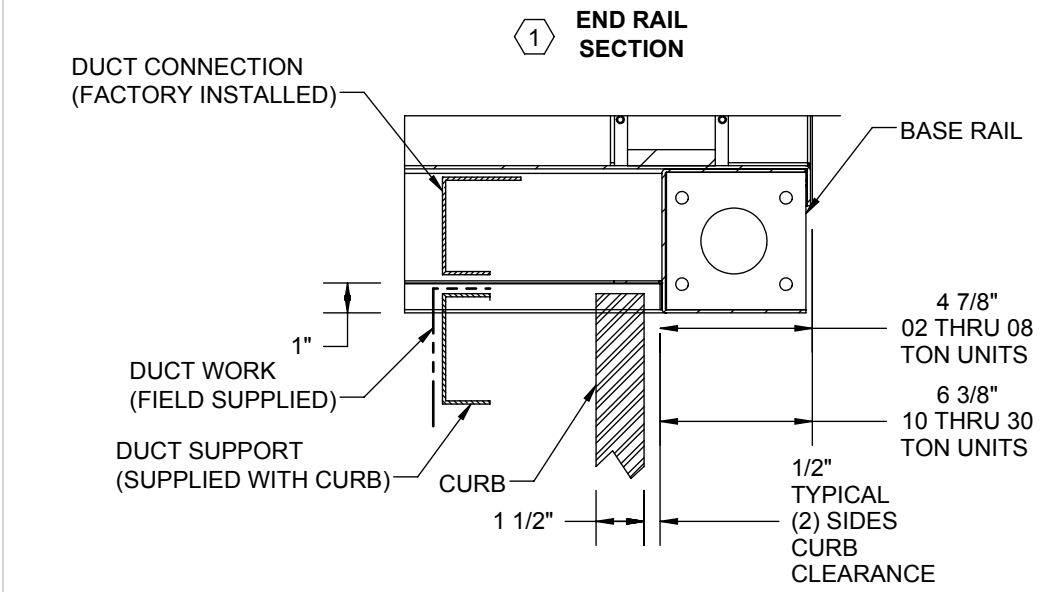
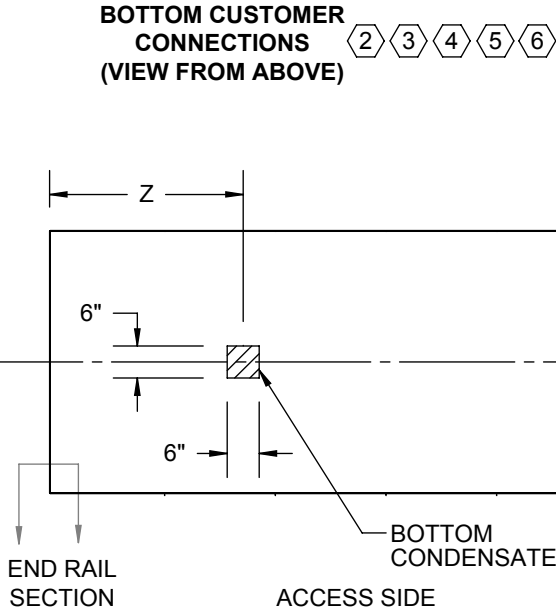
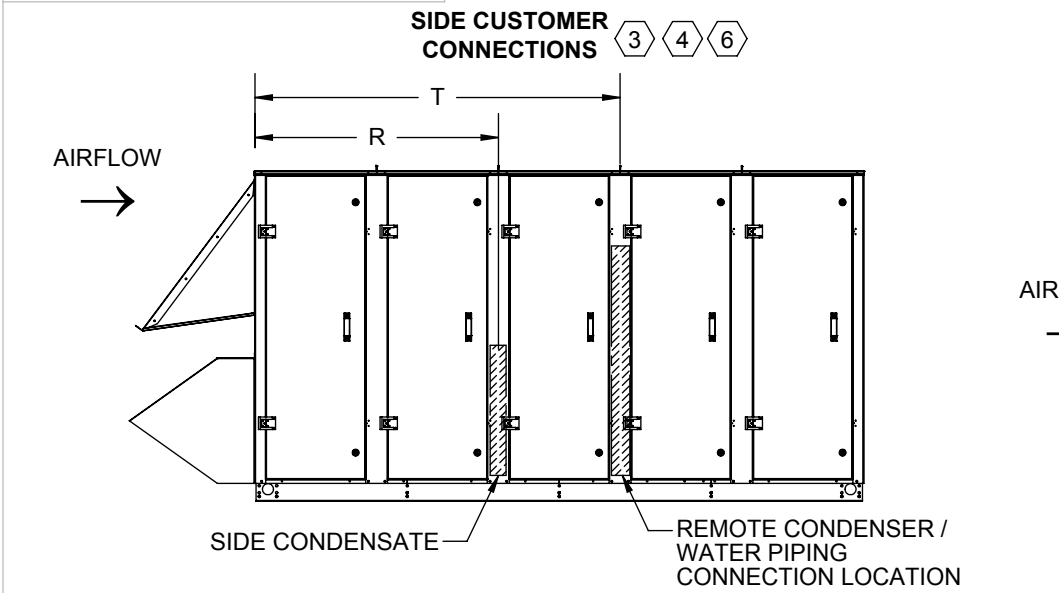
Tolerance Unless Otherwise Specified
X.X ±.125
X.XX ±.060
X.XXX ±.030
Angles ±1°

Drawn BCL
Date Released 5/12/2011
Sheet 1/6
Scale NTS

Rev. 4

N120 W18485 FREISTADT RD
GERMANTOWN, WI 53022
Tel: (262) 946-7400
Fax: (262) 946-7401

Description
EXT NON-PACKAGED w/ WHEEL
Page Title
GENERAL ARRANGEMENT
Drawing Number
G805-008



NOTES:
REFER TO SHEET 1 FOR GENERAL NOTES.

AIR FLOW	UNIT SIZE (TONS)	UNIT CABINET SIZES	R	T	Z
END FLOW	02	36-H	63 1/8	83 7/8	52 3/8
	03		63 1/8	83 7/8	52 3/8
	05	44-H	67	88 7/8	54 7/8
	08	50-H	68 5/8	91 1/2	55 3/4
	10	60-H	70 1/2	94	57
	15	72-H	75 3/8	100 1/2	60 1/4
	20	78-H	81 1/4	108 1/4	69 7/8
	25		81 1/4	108 1/4	69 7/8
	30		81 1/4	108 1/4	69 7/8
DOWN FLOW	02	36-H	63 1/8	83 7/8	52 3/8
	03		63 1/8	83 7/8	52 3/8
	05	44-H	67	88 7/8	54 7/8
	08	50-H	68 5/8	114 1/4	55 3/4
	10	60-H	70 1/2	117 1/2	57
	15	72-H	75 3/8	125 3/4	60 1/4
	20	78-H	81 1/4	135 1/4	69 7/8
	25		81 1/4	135 1/4	69 7/8
	30		81 1/4	135 1/4	69 7/8
TOP FLOW	02	36-H	63 1/8	83 7/8	52 3/8
	03		63 1/8	83 7/8	52 3/8
	05	44-H	67	88 7/8	54 7/8
	08	50-H	68 5/8	91 1/2	55 3/4
	10	60-H	70 1/2	94	57
	15	72-H	75 3/8	100 1/2	60 1/4
	20	78-H	81 1/4	108 1/4	69 7/8
	25		81 1/4	108 1/4	69 7/8
	30		81 1/4	108 1/4	69 7/8

CUSTOMER CONNECTION LINE SIZE SUMMARY (in.)									
Unit Size	2 TONS	3 TONS	5 TONS	8 TONS	10 TONS	15 TONS	20 TONS	25 TONS	30 TONS
RC DISCHARGE	1/2	5/8	3/4	7/8	7/8	1 1/8	1 1/8	1 1/8	1 3/8
RC RETURN	3/8	1/2	1/2	5/8	5/8	3/4	3/4	7/8	7/8
WATER INLET	7/8	7/8	1 1/8	1 3/8	1 3/8	1 5/8	2 5/8	2 5/8	2 5/8
WATER OUTLET	7/8	7/8	1 1/8	1 3/8	1 3/8	1 5/8	2 5/8	2 5/8	2 5/8
CONDENSATE	1	1	1	1	1	1	1	1	1

UNIT SIZE (TONS)	CAB	FILTER LOCATION	DA PART #			NOM W	NOM H	TOTAL QTY
			MERV 7/8	MERV 12	2" PRE			
2-3	36-H	S & E	870-041	870-131	870-043	20	24	4
5	44-H	S & E	870-056	870-133	870-057	18	24	6
8	50-H	S & E	870-041	870-131	870-043	20	24	6
10	60-H	S & E	870-012	870-130	870-009	24	24	6
15	72-H	SUPPLY	870-030	870-135	870-015	16	25	3
		SUPPLY	870-011	870-134	870-016	20	25	2
		EXHAUST	870-030	870-135	870-015	16	25	2
		EXHAUST	870-028	870-128	870-022	16	20	6
20-30	78-H	SUPPLY	870-010	870-129	870-005	20	20	4
		SUPPLY	870-011	870-134	870-016	20	25	4
		EXHAUST	870-030	870-135	870-015	16	25	4
		EXHAUST	870-028	870-128	870-022	16	20	4

Desert Aire has a policy of continuous product and quality improvement. Specifications and dimensions are subject to change without notice. This drawing and information contained herein are the exclusive property of the Desert Aire Corporation. Any use detrimental to the interests of Desert Aire is prohibited.

ALL DIMENSIONS ARE IN INCHES
TOLERANCE ± 1/8"

All Dimensions in Inches
All Angles 90°
All outside corners 0.125" fillet
Unless Otherwise Specified

Third Angle Projection

Part weight

Tolerance Unless Otherwise Specified
X.X ±.125
X.XX ±.060
X.XXX ±.030
Angles ±1°

Drawn BCL Date Released 5/12/2011

Sheet 2/6

Scale NTS Rev. 4

DESERT AIRE

N120 W18485 FREISTADT RD
GERMANTOWN, WI 53022
Tel: (262) 946-7400
Fax: (262) 946-7401

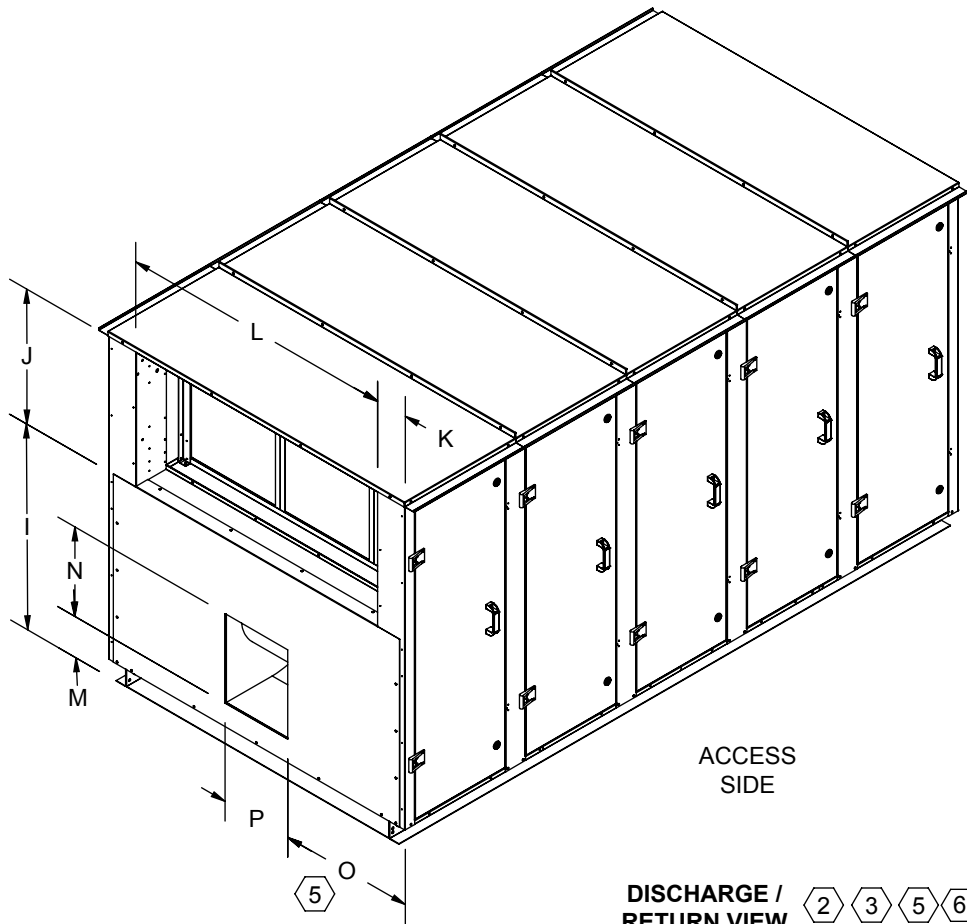
Description EXT NON-PACKAGED w/ WHEEL

Page Title CUSTOMER INTERFACE GA

Drawing Number G805-008

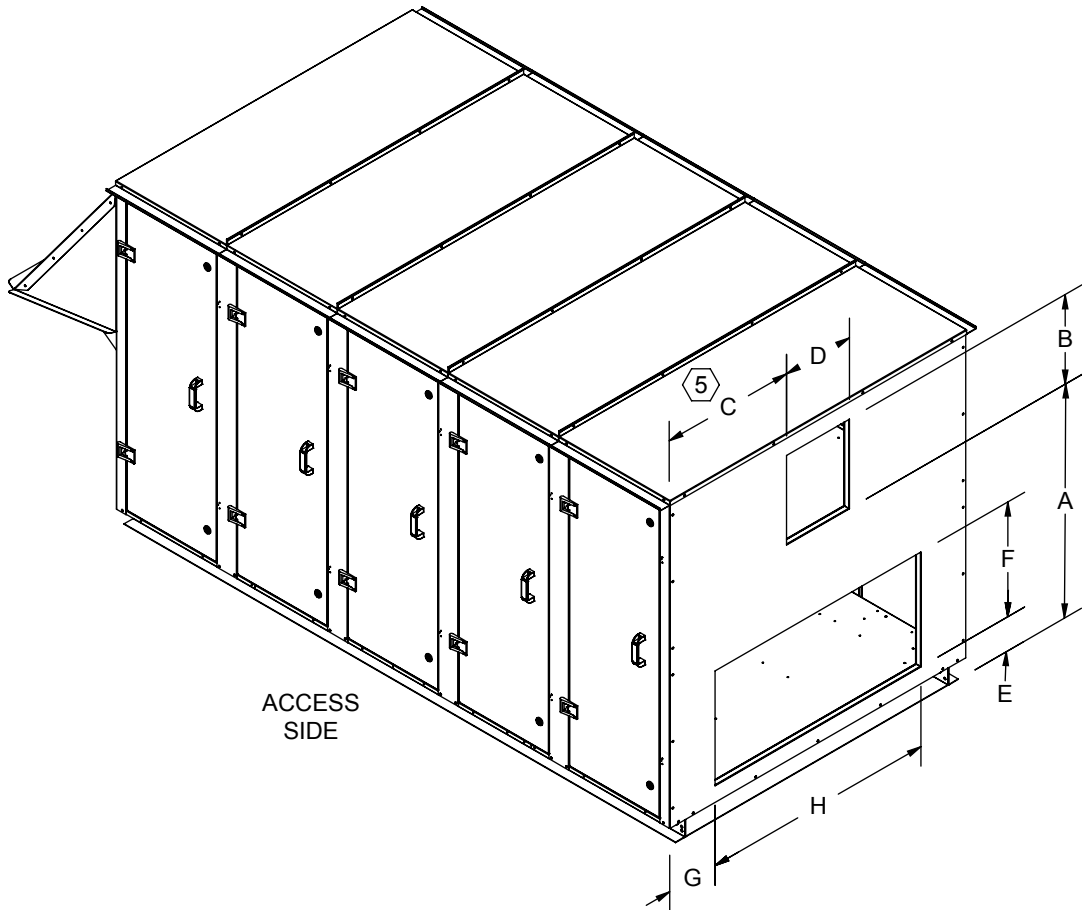
O/A INTAKE /
EXHAUST VIEW

2 3 5 6



DISCHARGE /
RETURN VIEW

2 3 5 6



NOTES:
REFER TO SHEET 1 FOR GENERAL NOTES.
WEIGHTS SHOWN REFLECT FULLY OPTIONED
ESTIMATED UNIT WEIGHT.

UNIT SIZE (TONS)	UNIT CABINET SIZES	END DISCHARGE, END RETURN							
		SUPPLY DISCHARGE (in.)				RETURN INTAKE (in.)			
		A	B	C ⁵	D	E	F	G	H
02	36-H	24 3/4	12 3/4	17 7/8	13 1/4	3 7/8	10	9 3/8	30 1/2
03		24 3/4	12 3/4	17 7/8	13 1/4	3 7/8	10	9 3/8	30 1/2
05	44-H	29 1/4	11 1/2	21 1/4	12	3 7/8	14	9 3/8	35 7/8
08	50-H	34 1/4	16	22 3/4	15 3/4	6 3/8	20 1/2	9 3/8	42 1/2
10	60-H	40 7/8	16	26 7/8	18 3/4	7 7/8	30	9 3/8	53 7/8
15	72-H	48 1/4	16	34 3/8	18 3/4	7 7/8	36	9 3/8	68 7/8
20	78-H	43 5/8	28 3/8	31 1/8	28 3/8	7 7/8	32	9 3/8	71 7/8
25		43 5/8	28 3/8	31 1/8	28 3/8	7 7/8	32	9 3/8	71 7/8
30		43 5/8	28 3/8	31 1/8	28 3/8	7 7/8	32	9 3/8	71 7/8

UNIT SIZE (TONS)	UNIT CABINET SIZES	CONTINUED - END DISCHARGE, END RETURN								
		EXHAUST DISCHARGE (in.)				O/A INTAKE (in.)				TOTAL EST. WEIGHT (LBS.)
		M	N	O ⁵	P	I	J	K	L	
02	36-H	3 3/4	12 3/4	17 7/8	13 1/4	28 1/2	20 1/4	6 5/8	35 7/8	1769
03		3 3/4	12 3/4	17 7/8	13 1/4	28 1/2	20 1/4	6 5/8	35 7/8	1819
05	44-H	3 3/4	11 1/2	21 1/4	12	26 1/2	26 1/8	5 1/4	43 7/8	2196
08	50-H	6 1/4	16	22 3/4	15 3/4	37	23 5/8	5 5/8	49 7/8	2838
10	60-H	7 3/4	16	26 7/8	18 3/4	43 1/2	29 1/2	6 1/4	59 7/8	3555
15	72-H	7 3/4	16	34 3/8	18 3/4	45 1/2	35 5/8	7 3/4	71 7/8	5106
20	78-H	7 3/4	28 3/8	31 1/8	28 3/8	48 1/2	41 7/8	6 1/4	77 7/8	5685
25		7 3/4	28 3/8	31 1/8	28 3/8	48 1/2	41 7/8	6 1/4	77 7/8	7727
30		7 3/4	28 3/8	31 1/8	28 3/8	48 1/2	41 7/8	6 1/4	77 7/8	7852

Desert Aire has a policy of continuous product and quality improvement. Specifications and dimensions are subject to change without notice. This drawing and information contained herein are the exclusive property of the Desert Aire Corporation. Any use detrimental to the interests of Desert Aire is prohibited.

ALL DIMENSIONS ARE IN INCHES
TOLERANCE ± 1/8"

All Dimensions in Inches
All Angles 90°
All outside corners 0.125" fillet
Unless Otherwise Specified



Third Angle Projection

Part weight

Tolerance Unless
Otherwise Specified
X.X ±.125
X.XX ±.060
X.XXX ±.030
Angles ±1°

Drawn
BCL

Date Released
5/12/2011

Sheet

3/6

Scale

NTS



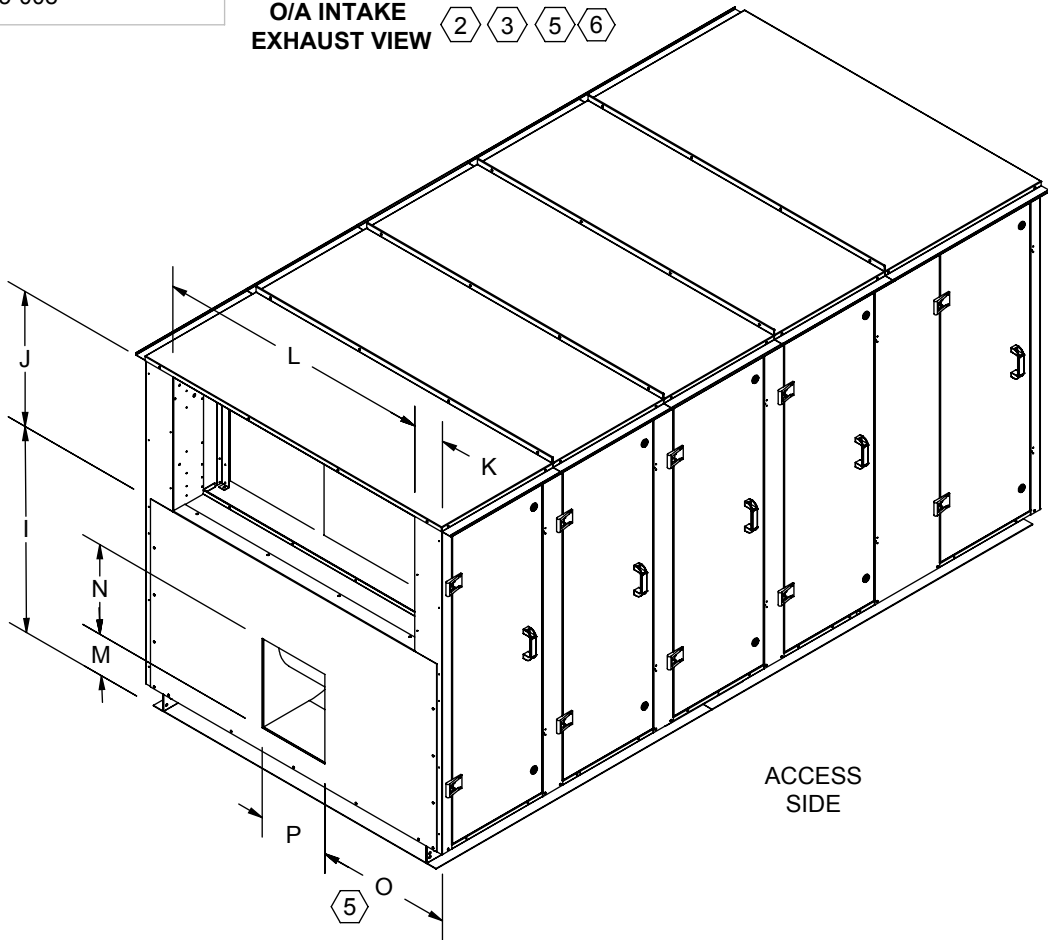
N120 W18485 FREISTADT RD
GERMANTOWN, WI 53022
Tel: (262) 946-7400
Fax: (262) 946-7401

Description
EXT NON-PACKAGED w/ WHEEL

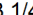
Page Title
END DISCHARGE GA

Drawing Number
G805-008

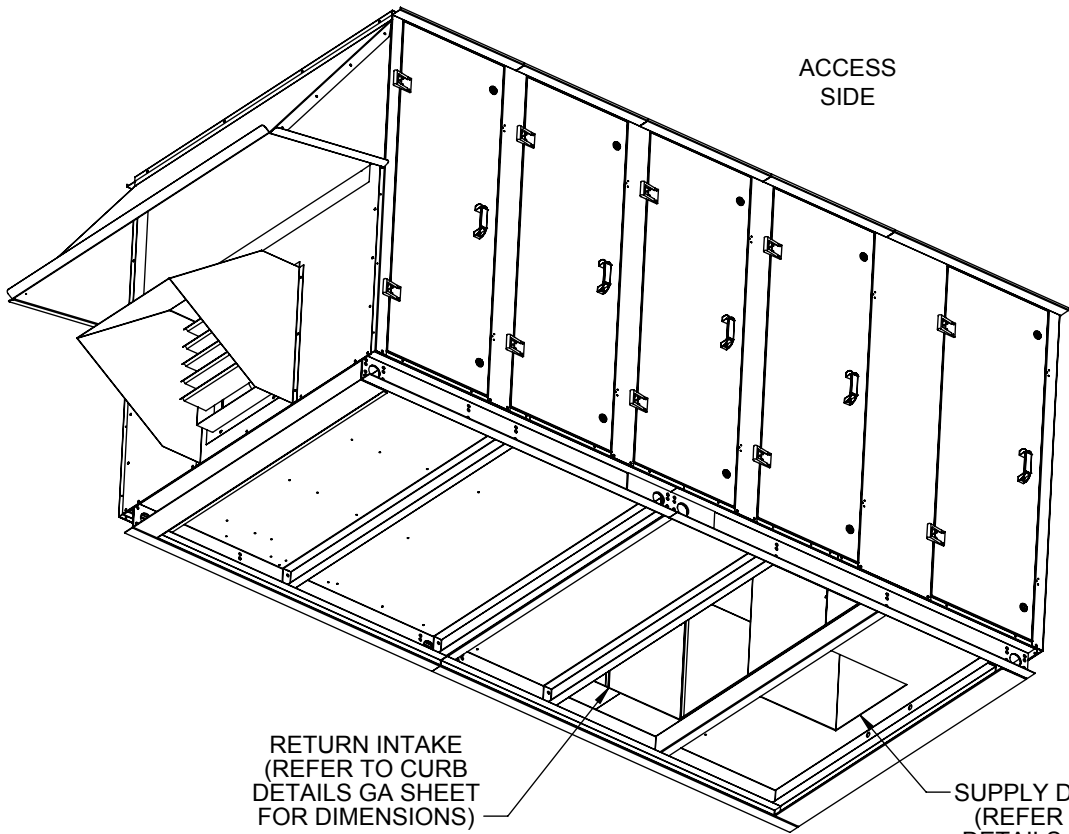
O/A INTAKE
EXHAUST VIEW 2 3 5 6



NOTES:
REFER TO SHEET 1 FOR GENERAL NOTES.
WEIGHTS SHOWN REFLECT FULLY OPTIONED
ESTIMATED UNIT WEIGHT.
REFER TO CURB DETAILS GA SHEET FOR SUPPLY /
RETURN DUCT DIMENSION AND LOCATIONS.

UNIT SIZE (TONS)	UNIT CABINET SIZES	DOWN DISCHARGE, END RETURN								
		EXHAUST DISCHARGE (in.)				O/A INTAKE (in.)				TOTAL EST. WEIGHT (LBS.)
		M	N	O 	P	I	J	K	L	
02	36-H	3 3/4	12 3/4	17 7/8	13 1/4	28 1/2	20 1/4	6 5/8	35 7/8	1769
03		3 3/4	12 3/4	17 7/8	13 1/4	28 1/2	20 1/4	6 5/8	35 7/8	1819
05	44-H	3 3/4	11 1/2	21 1/4	12	26 1/2	26 1/8	5 1/4	43 7/8	2196
08	50-H	6 1/4	16	22 3/4	15 3/4	37	23 5/8	5 5/8	49 7/8	2838
10	60-H	7 3/4	16	26 7/8	18 3/4	43 1/2	29 1/2	6 1/4	59 7/8	3555
15	72-H	7 3/4	16	34 3/8	18 3/4	45 1/2	35 5/8	7 3/4	71 7/8	5106
20	78-H	7 3/4	28 3/8	31 1/8	28 3/8	48 1/2	41 7/8	6 1/4	77 7/8	5685
25		7 3/4	28 3/8	31 1/8	28 3/8	48 1/2	41 7/8	6 1/4	77 7/8	7727
30		7 3/4	28 3/8	31 1/8	28 3/8	48 1/2	41 7/8	6 1/4	77 7/8	7852

DISCHARGE /
RETURN VIEW 3 5 6



Desert Aire has a policy of continuous product and quality improvement. Specifications and dimensions are subject to change without notice. This drawing and information contained herein are the exclusive property of the Desert Aire Corporation. Any use detrimental to the interests of Desert Aire is prohibited.

ALL DIMENSIONS ARE IN INCHES
TOLERANCE ± 1/8"

All Dimensions in Inches
All Angles 90°
All outside corners 0.125" fillet
Unless Otherwise Specified



Third Angle Projection

Part weight

Tolerance Unless
Otherwise Specified
X.X ±.125
X.XX ±.060
X.XXX ±.030
Angles ±1°

Drawn BCL Date Released 5/12/2011

Sheet 4/6

Scale NTS



N120 W18485 FREISTADT RD
GERMANTOWN, WI 53022
Tel: (262) 946-7400
Fax: (262) 946-7401

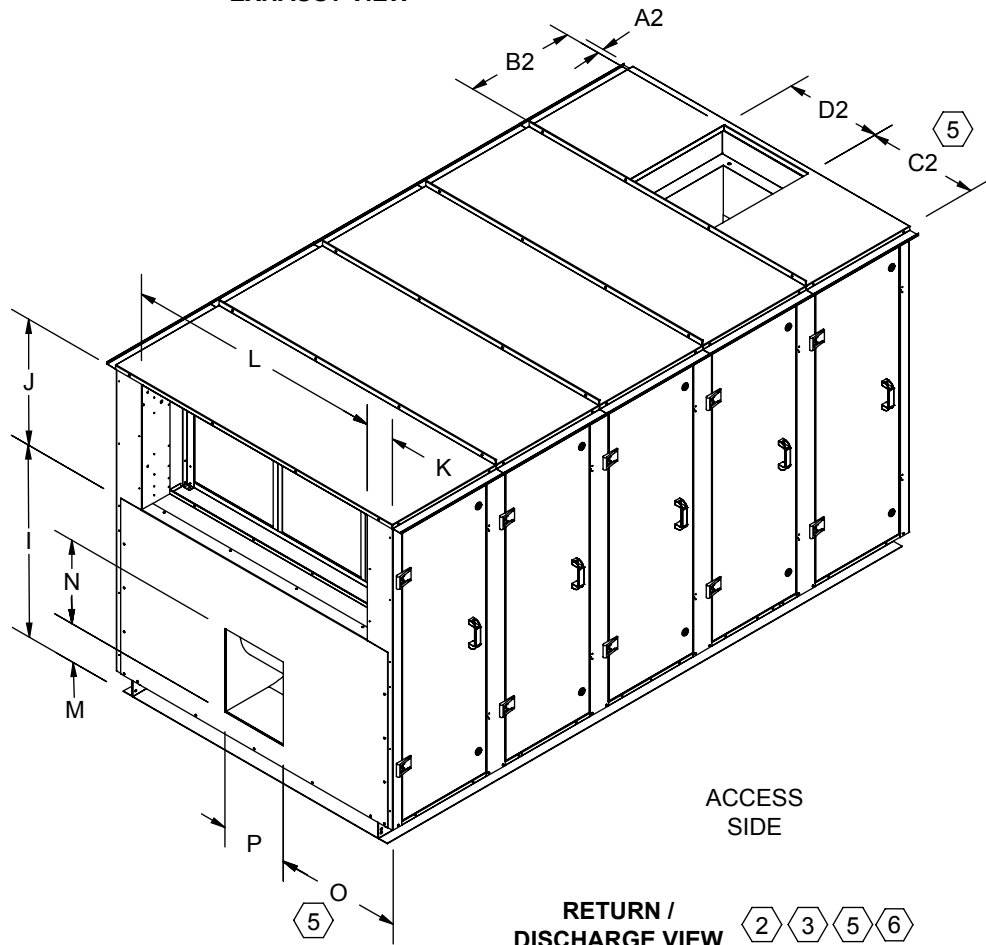
Description EXT NON-PACKAGED w/ WHEEL

Page Title DOWN DISCHARGE GA

Drawing Number G805-008

O/A INTAKE /
DISCHARGE /
EXHAUST VIEW

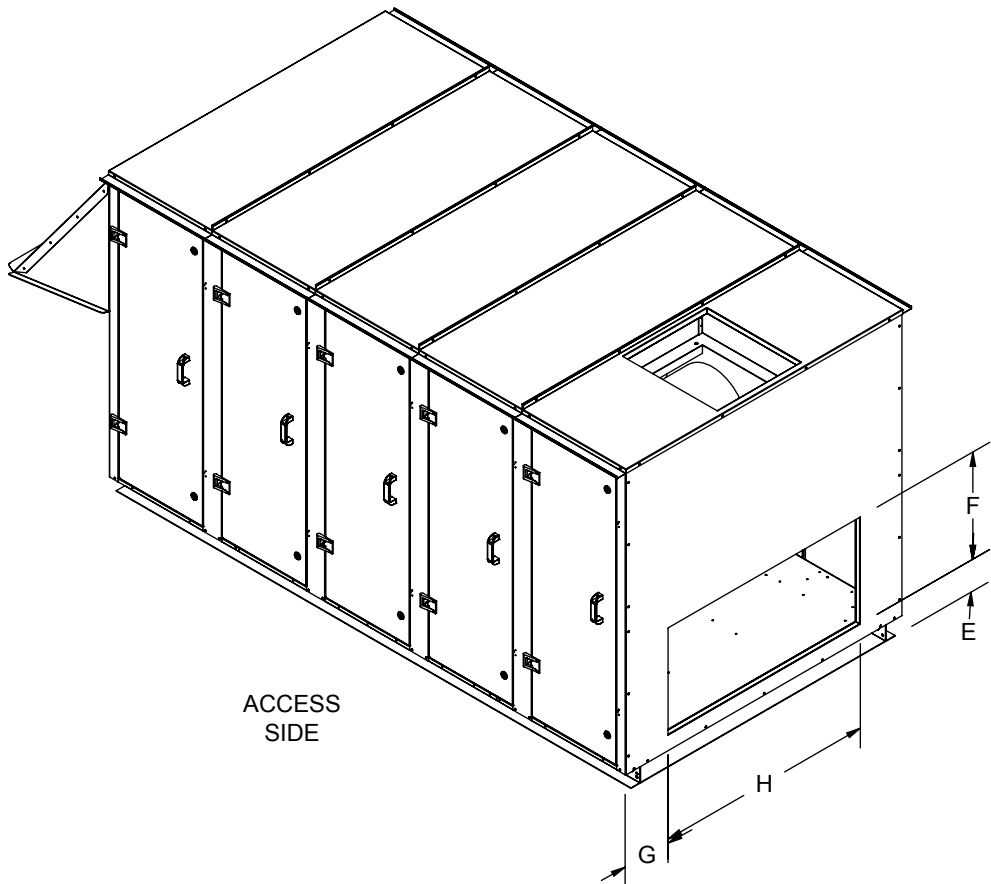
2 3 5 6



ACCESS
SIDE

RETURN /
DISCHARGE VIEW

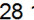
2 3 5 6



ACCESS
SIDE

NOTES:
REFER TO SHEET 1 FOR GENERAL NOTES.
WEIGHTS SHOWN REFLECT FULLY OPTIONED
ESTIMATED UNIT WEIGHT.

UNIT SIZE (TONS)	UNIT CABINET SIZES	TOP DISCHARGE, END RETURN							
		SUPPLY DISCHARGE (in.)				RETURN INTAKE (in.)			
		A2	B2	C2	D2	E	F	G	H
02	36-H	1 1/4	13 3/4	17 7/8	13 1/4	3 7/8	10	9 3/8	30 1/2
03		1 1/4	13 3/4	17 7/8	13 1/4	3 7/8	10	9 3/8	30 1/2
05	44-H	1 1/4	12 1/2	21 1/4	12	3 7/8	14	9 3/8	35 7/8
08	50-H	1 1/4	17	22 3/4	15 3/4	6 3/8	20 1/2	9 3/8	42 1/2
10	60-H	1 1/4	17	26 7/8	18 3/4	7 7/8	30	9 3/8	53 7/8
15	72-H	1 1/4	17	34 3/8	18 3/4	7 7/8	36	9 3/8	68 7/8
20	78-H	1 1/4	29 3/8	31 1/8	28 3/8	7 7/8	32	9 3/8	71 7/8
25		1 1/4	29 3/8	31 1/8	28 3/8	7 7/8	32	9 3/8	71 7/8
30		1 1/4	29 3/8	31 1/8	28 3/8	7 7/8	32	9 3/8	71 7/8

UNIT SIZE (TONS)	UNIT CABINET SIZES	CONTINUED - TOP DISCHARGE, END RETURN								
		EXHAUST DISCHARGE (in.)				O/A INTAKE (in.)				TOTAL EST. WEIGHT (LBS.)
		M	N	O 	P	I	J	K	L	
02	36-H	3 3/4	12 3/4	17 7/8	13 1/4	28 1/2	20 1/4	6 5/8	35 7/8	1769
03		3 3/4	12 3/4	17 7/8	13 1/4	28 1/2	20 1/4	6 5/8	35 7/8	1819
05	44-H	3 3/4	11 1/2	21 1/4	12	26 1/2	26 1/8	5 1/4	43 7/8	2196
08	50-H	6 1/4	16	22 3/4	15 3/4	37	23 5/8	5 5/8	49 7/8	2838
10	60-H	7 3/4	16	26 7/8	18 3/4	43 1/2	29 1/2	6 1/4	59 7/8	3555
15	72-H	7 3/4	16	34 3/8	18 3/4	45 1/2	35 5/8	7 3/4	71 7/8	5106
20	78-H	7 3/4	28 3/8	31 1/8	28 3/8	48 1/2	41 7/8	6 1/4	77 7/8	5685
25		7 3/4	28 3/8	31 1/8	28 3/8	48 1/2	41 7/8	6 1/4	77 7/8	7727
30		7 3/4	28 3/8	31 1/8	28 3/8	48 1/2	41 7/8	6 1/4	77 7/8	7852

Desert Aire has a policy of continuous product and quality improvement. Specifications and dimensions are subject to change without notice. This drawing and information contained herein are the exclusive property of the Desert Aire Corporation. Any use detrimental to the interests of Desert Aire is prohibited.

All Dimensions in Inches
All Angles 90°
All outside corners 0.125" fillet
Unless Otherwise Specified



Third Angle Projection

Part weight

Tolerance Unless
Otherwise Specified
X.X ±.125
X.XX ±.060
X.XXX ±.030
Angles ±1°

Drawn BCL Date Released 5/12/2011

Sheet 5/6

Scale NTS



N120 W18485 FREISTADT RD
GERMANTOWN, WI 53022
Tel: (262) 946-7400
Fax: (262) 946-7401

Description EXT NON-PACKAGED w/ WHEEL

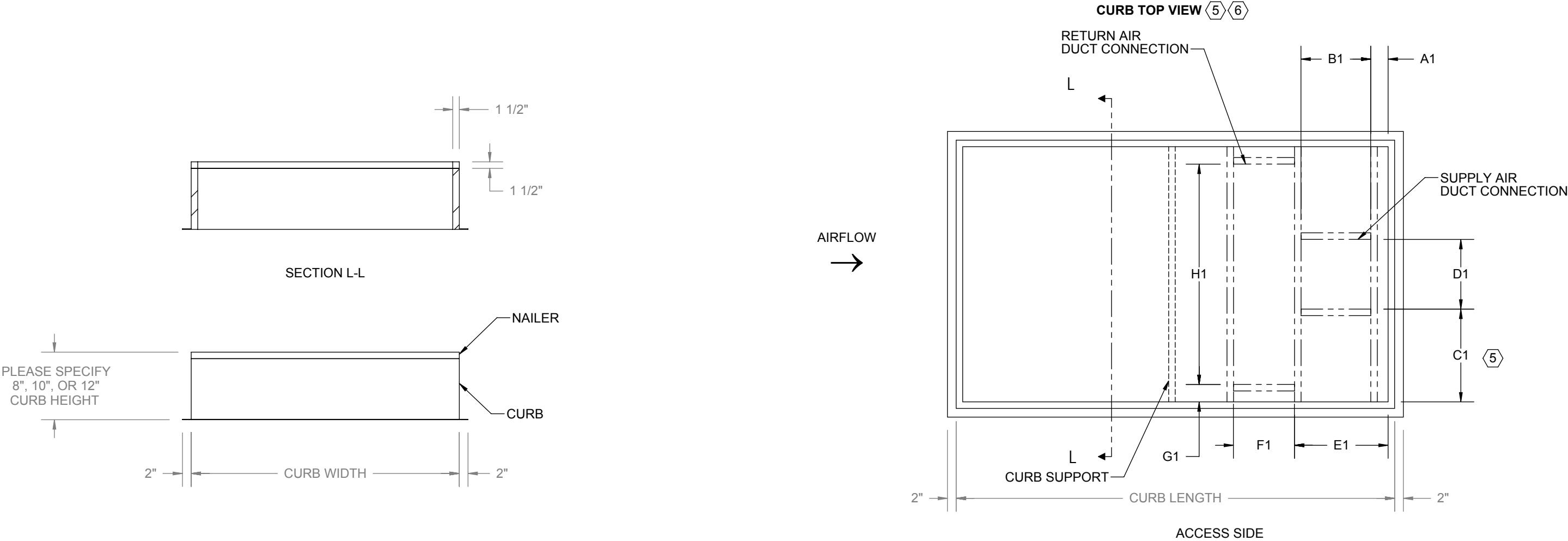
Page Title TOP DISCHARGE GA

Drawing Number G805-008


ALL DIMENSIONS ARE IN INCHES
TOLERANCE ± 1/8"

NOTES:
REFER TO SHEET 1 FOR GENERAL NOTES.
CURBS 120" AND LESS ARE SHIPPED AS COMPLETE CURBS. GREATER THAN 120" ARE SHIPPED KNOCKED DOWN.
NUMBER AND LOCATION OF CROSS SUPPORT(S) IS DEPENDANT UPON THE GUAGE OF MATERIAL USED TO CONSTRUCT THE CURB, DUCT SUPPORT CONFIGURATION, LENGTH OF CURB AND WIDTH OF CURB. INSTALLATION INSTRUCTIONS INCLUDED WITH CURB SHIPMENT INDICATE THE REQUIRED POSITION FOR FIELD ASSEMBLED CURBS

UNIT SIZE (TONS)	UNIT CABINET SIZES	END/END FLOW ROOFCURB DIMS			TOP/END FLOW ROOFCURB DIMS			DOWN/DOWN FLOW ROOFCURB DIMS										
		CURB P/N	WIDTH (in.)	LENGTH (in.)	CURB P/N	WIDTH (in.)	LENGTH (in.)	CURB P/N	WIDTH (in.)	LENGTH (in.)	SUPPLY DISCHARGE (in.)				RETURN INTAKE (in.)			
											A 1	B 1	C1 ⁽⁵⁾	D 1	E 1	F 1	G 1	H 1
02	36-H	CB02WNA N06-XX	45 1/2	115 3/8	CB02WNB N06-XX	45 1/2	115 3/8	CB02WNC N06-XX	45 1/2	115 3/8	0	12 3/4	14 5/8	13 1/4	14 1/4	13	5 3/4	31
03		CB03WNA N06-XX	45 1/2	115 3/8	CB03WNB N06-XX	45 1/2	115 3/8	CB03WNC N06-XX	45 1/2	115 3/8	0	12 3/4	14 5/8	13 1/4	14 1/4	13	5 3/4	31
05	44-H	CB05WNA N06-XX	50 7/8	123 1/8	CB05WNB N06-XX	50 7/8	123 1/8	CB05WNC N06-XX	50 7/8	123 1/8	0	11 1/2	18	12	13	17	6	36
08	50-H	CB08WNA N06-XX	53 1/8	126 1/2	CB08WNB N06-XX	53 1/8	126 1/2	CB08WNC N07-XX	53 1/8	149 1/4	0	16	17 1/4	15 3/4	17 1/2	18	3 5/8	43
10	60-H	CB10WNA N06-XX	64 1/2	127 1/8	CB10WNB N06-XX	64 1/2	127 1/8	CB10WNC N07-XX	64 1/2	150 3/4	0	16	21 3/8	18 3/4	17 1/2	30	3 3/4	54
15	72-H	CB15WNA N06-XX	79 1/2	136 7/8	CB15WNB N06-XX	79 1/2	136 7/8	CB15WNC N07-XX	79 1/2	162 1/8	0	16	28 7/8	18 3/4	17 1/2	31	3 3/4	69
20	78-H	CB20WNA N06-XX	82 1/2	148 5/8	CB20WNB N06-XX	82 1/2	148 5/8	CB20WNC N07-XX	82 1/2	175 3/4	0	28 3/8	25 5/8	28 3/8	29 7/8	32	3 3/4	72
25		CB25WNA N06-XX	82 1/2	148 5/8	CB25WNB N06-XX	82 1/2	148 5/8	CB25WNC N07-XX	82 1/2	175 3/4	0	28 3/8	25 5/8	28 3/8	29 7/8	32	3 3/4	72
30		CB30WNA N06-XX	82 1/2	148 5/8	CB30WNB N06-XX	82 1/2	148 5/8	CB30WNC N07-XX	82 1/2	175 3/4	0	28 3/8	25 5/8	28 3/8	29 7/8	32	3 3/4	72



----- DUCT CONNECTIONS FOR DOWN DISCHARGE / DOWN RETURN

Desert Aire has a policy of continuous product and quality improvement. Specifications and dimensions are subject to change without notice. This drawing and information contained herein are the exclusive property of the Desert Aire Corporation. Any use detrimental to the interests of Desert Aire is prohibited.	All Dimensions in Inches All Angles 90° All outside corners 0.125" fillet Unless Otherwise Specified	Tolerance Unless Otherwise Specified X.X ±.125 X.XX ±.060 X.XXX ±.030 Angles ±1°	 <div>N120 W18485 FREISTADT RD GERMANTOWN, WI 53022 Tel: (262) 946-7400 Fax: (262) 946-7401</div>			
				Drawn BCL	Date Released 5/12/2011	Description EXT NON-PACKAGED w/ WHEEL
				Sheet 6/6	Page Title CURB DETAILS GA	
				Scale NTS	Rev. 4	Drawing Number G805-008

ALL DIMENSIONS ARE IN INCHES
TOLERANCE ± 1/8"

Third Angle Projection

Part weight