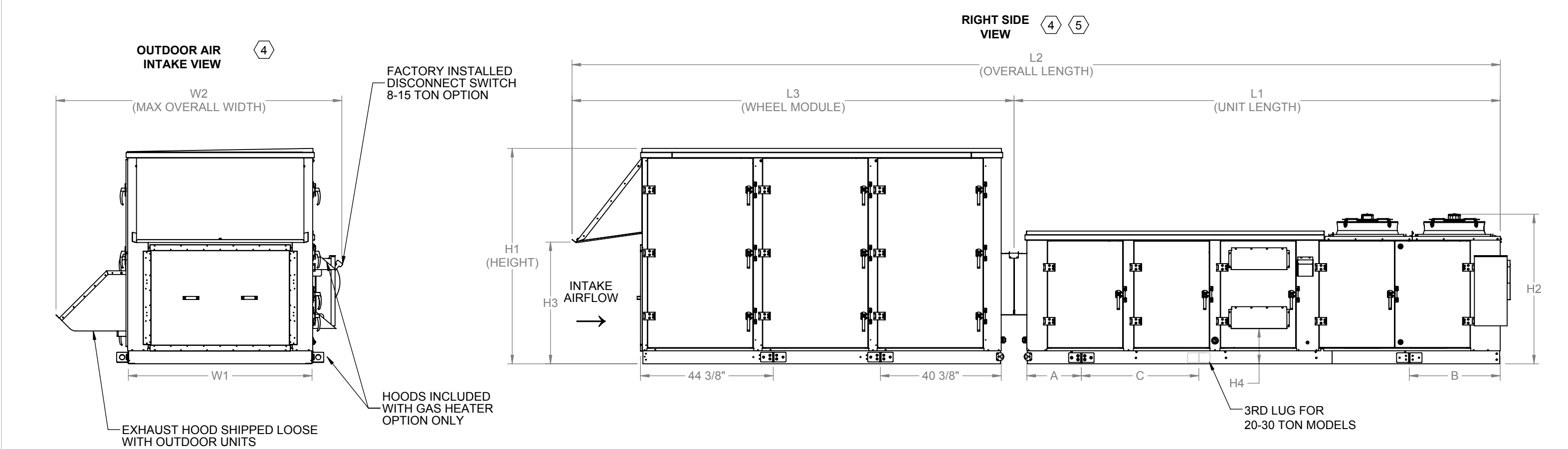




AIR FLOW	UNIT CABINET SIZES	UNIT SIZE (TONS)	L1	W1	H1	H2	L2	W2	L3	H3	H4	A	B	C
DOWN FLOW	50	08	162 1/2	61 3/8	72	50	310 1/4	73 3/8	147 3/4	40 5/8	11 7/8	18 7/8	30 3/8	N/A
		10	162 1/2	61 3/8	72	50	310 1/4	73 3/8	147 3/4	40 5/8	11 7/8	18 7/8	30 3/8	N/A
		12	162 1/2	61 3/8	72	50	310 1/4	73 3/8	147 3/4	40 5/8	11 7/8	18 7/8	30 3/8	N/A
		15	162 1/2	61 3/8	72	50	310 1/4	73 3/8	147 3/4	40 5/8	11 7/8	18 7/8	30 3/8	N/A
DOWN FLOW	82	20	188 1/2	94 1/4	98 3/8	73 1/8	331 3/4	106	143 1/4	51	21 3/8	38 1/4	33 3/8	61 1/8
		25	188 1/2	94 1/4	98 3/8	73 1/8	331 3/4	106	143 1/4	51	21 3/8	38 1/4	33 3/8	61 1/8
		30	212 1/2	94 1/4	98 3/8	73 1/8	356	106	143 1/4	51	21 3/8	38 1/4	33 3/8	61 1/8



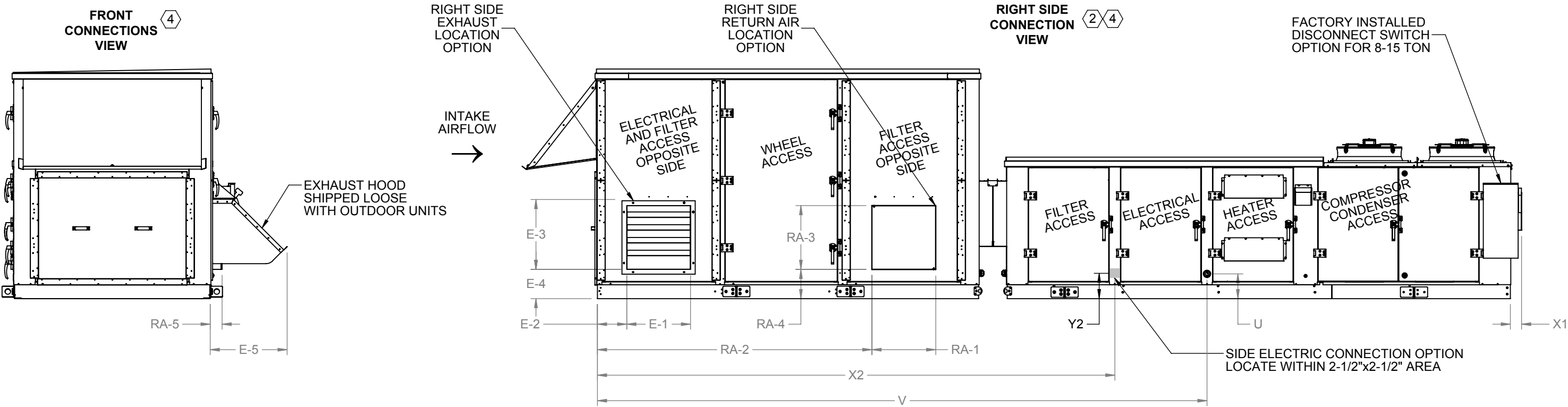
GENERAL NOTE AS REFERENCED BY INDIVIDUAL SHEETS

- 1 PORTION OF SECTIONED OR DETAILED DRAWING HAS BEEN OMITTED FOR CLARITY.
- 2 HOODS OMITTED FOR CLARITY.
- 3 VIEW IS FOR PICTORIAL PURPOSES. REFER TO PAGE 1 FOR THE UNIT TYPE SPECIFIC VIEW.
- 4 GAS HEAT OPTION SHOWN.
- 5 15 TON UNIT SHOWN. FAN QUANTITY MAY VARY BY TONNAGE.

Desert Aire has a policy of continuous product and quality improvement. Specifications and dimensions are subject to change without notice. This drawing and information contained herein are the exclusive property of the Desert Aire Corporation. Any use detrimental to the interests of Desert Aire is prohibited.	All Dimensions in Inches All Angles 90° All outside corners 0.125" fillet Unless Otherwise Specified	Tolerance Unless Otherwise Specified X.X ±.125 X.XX ±.060 X.XXX ±.030 Angles ±1°	 <div>N120 W18485 FREISTADT RD GERMANTOWN, WI 53022 Tel: (262) 946-7400 Fax: (262) 946-7401</div>		
	ALL DIMENSIONS ARE IN INCHES TOLERANCE ± 1/8"	Third Angle Projection 	Drawn MHB	Date Released	Description AURA AIR COOLED PKGD W/WHEEL
	Part weight	Sheet 1/10	Scale NTS	Rev. 3	Page Title GENERAL ARRANGEMENT
				Drawing Number G806-003	

DISCONNECT RATING AMPS	X1
30	1 7/8
60	1 7/8
100	1 7/8
200	8 3/4

UNIT CABINET SIZES	UNIT SIZE (TONS)	RETURN AIR CONNECTION					EXHAUST AIR HOOD					SIDE ELECTRICAL CONNECTION		GAS CONNECTION	
		RA-1	RA-2	RA-3	RA-4	RA-5	E-1	E-2	E-3	E-4	E-5	X2	Y2	U	V
50	08	20	83 1/8	20	9 1/8	3 1/2	20	6 3/8	20	9 1/8	24 1/8	162 1/4	7 1/4	7 3/4	191 1/8
	10	20	83 1/8	20	9 1/8	3 1/2	20	6 3/8	20	9 1/8	24 1/8	162 1/4	7 1/4	7 3/4	191 1/8
	12	20	83 1/8	20	9 1/8	3 1/2	20	6 3/8	20	9 1/8	24 1/8	162 1/4	7 1/4	7 3/4	191 1/8
	15	20	83 1/8	20	9 1/8	3 1/2	20	6 3/8	20	9 1/8	24 1/8	162 1/4	7 1/4	7 3/4	191 1/8
82	20	30	81 1/8	30	8 1/2	3 5/8	30	4 1/4	30	9 1/4	25 5/8	169 1/2	8 3/4	8 3/4	210
	25	30	81 1/8	30	8 1/2	3 5/8	30	4 1/4	30	9 1/4	25 5/8	169 1/2	8 3/4	8 3/4	210
	30	30	81 1/8	30	8 1/2	3 5/8	30	4 1/4	30	9 1/4	25 5/8	169 1/2	8 3/4	8 3/4	210



NOTE:
REFER TO SHEET 1 FOR GENERAL NOTES.

CUSTOMER CONNECTION LINE SIZE (in.)							
UNIT SIZE	8 TONS	10 TONS	12 TONS	15 TONS	20 TONS	25 TONS	30 TONS
GAS (MNPT)	3/4	3/4	3/4	3/4	1	1	1

Desert Aire has a policy of continuous product and quality improvement. Specifications and dimensions are subject to change without notice. This drawing and information contained herein are the exclusive property of the Desert Aire Corporation. Any use detrimental to the interests of Desert Aire is prohibited.

ALL DIMENSIONS ARE IN INCHES
TOLERANCE $\pm 1/8"$

All Dimensions in Inches
All Angles 90°
All outside corners 0.125" fillet
Unless Otherwise Specified

Third Angle Projection

Part weight

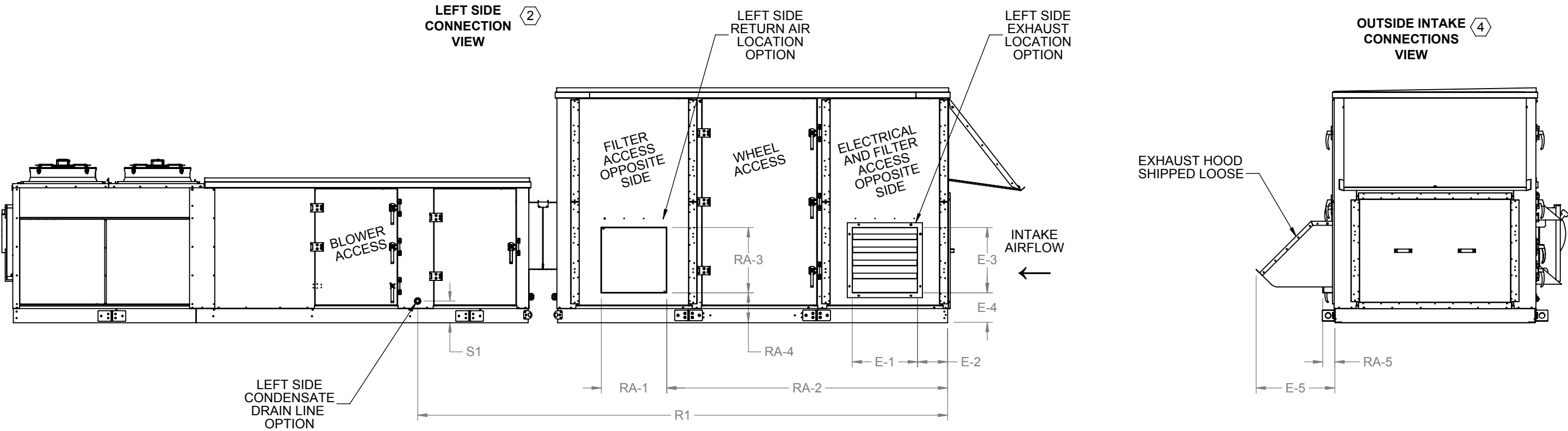
Tolerance Unless Otherwise Specified
X.X $\pm .125$
X.XX $\pm .060$
X.XXX $\pm .030$
Angles $\pm 1^\circ$

Drawn MHB	Date Released	Description AURA AIR COOLED PKGD W/WHEEL
Sheet	2/10	Page Title RIGHT SIDE EXHAUST / RA
Scale NTS	Rev. 3	Drawing Number G806-003

**DESERT
AIRE**

N120 W18485 FREISTADT RD
GERMANTOWN, WI 53022
Tel: (262) 946-7400
Fax: (262) 946-7401

UNIT CABINET SIZES	UNIT SIZE (TONS)	RETURN AIR CONNECTION					EXHAUST AIR HOOD					CONDENSATE	
		RA-1	RA-2	RA-3	RA-4	RA-5	E-1	E-2	E-3	E-4	E-5	R1	S1
50	08	20	89	20	9 1/8	3 1/2	20	12	20	9 1/8	24 1/8	162 3/8	6 3/4
	10	20	89	20	9 1/8	3 1/2	20	12	20	9 1/8	24 1/8	162 3/8	6 3/4
	12	20	89	20	9 1/8	3 1/2	20	12	20	9 1/8	24 1/8	162 3/8	6 3/4
	15	20	89	20	9 1/8	3 1/2	20	12	20	9 1/8	24 1/8	162 3/8	6 3/4
82	20	30	81 1/8	30 1/2	8 1/2	3 5/8	30	4 1/4	30	9 1/4	25 5/8	156 1/8	8 1/2
	25	30	81 1/8	30 1/2	8 1/2	3 5/8	30	4 1/4	30	9 1/4	25 5/8	156 1/8	8 1/2
	30	30	81 1/8	30 1/2	8 1/2	3 5/8	30	4 1/4	30	9 1/4	25 5/8	156 1/8	8 1/2



NOTE:
REFER TO SHEET 1 FOR GENERAL NOTES.

CUSTOMER CONNECTION LINE SIZE (in.)							
UNIT SIZE	8 TONS	10 TONS	12 TONS	15 TONS	20 TONS	25 TONS	30 TONS
CONDENSATE (PVC)	3/4	3/4	3/4	3/4	1 1/2	1 1/2	1 1/2

Desert Aire has a policy of continuous product and quality improvement. Specifications and dimensions are subject to change without notice. This drawing and information contained herein are the exclusive property of the Desert Aire Corporation. Any use detrimental to the interests of Desert Aire is prohibited.

ALL DIMENSIONS ARE IN INCHES
TOLERANCE $\pm 1/8"$

All Dimensions in Inches
All Angles 90°
All outside corners 0.125" fillet
Unless Otherwise Specified

Third Angle Projection

Part weight

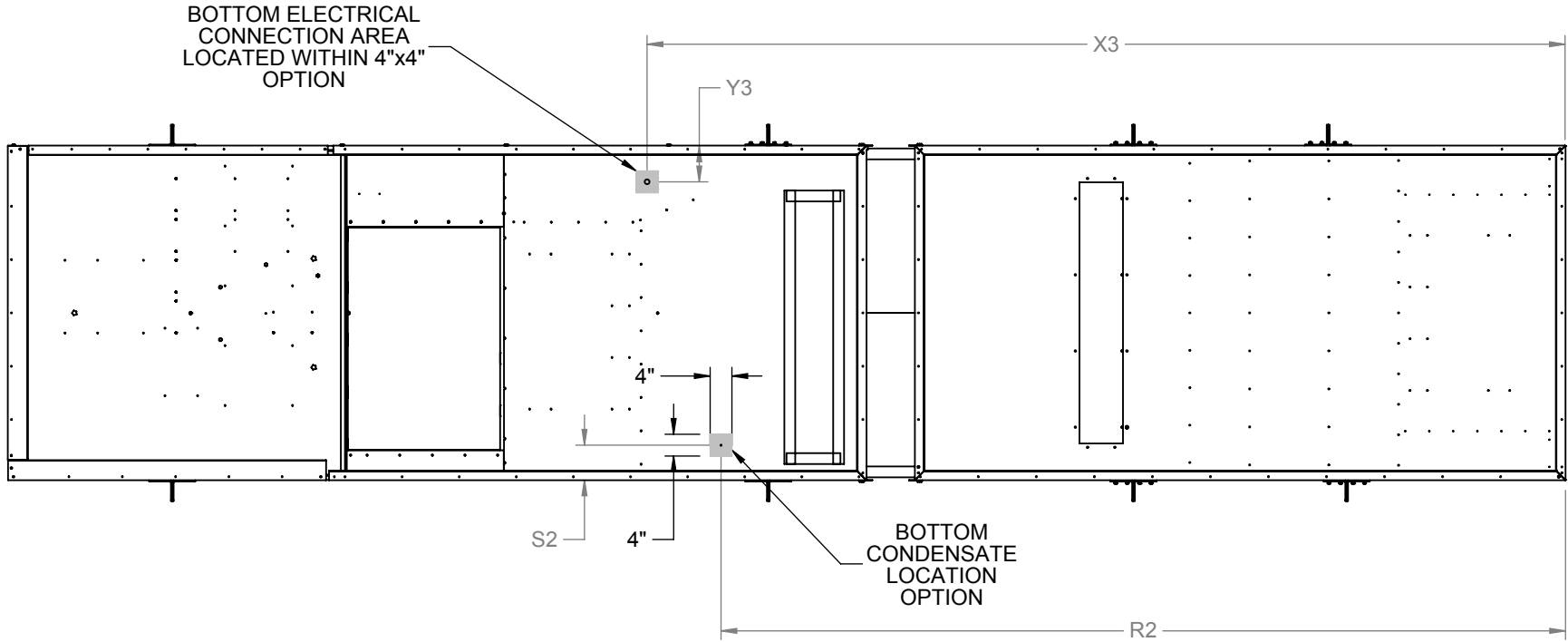
Tolerance Unless Otherwise Specified
X.X $\pm .125$
X.XX $\pm .060$
X.XXX $\pm .030$
Angles $\pm 1^\circ$

Drawn MHB	Date Released	Description AURA AIR COOLED PKGD W/WHEEL
Sheet	3/10	Page Title LEFT SIDE EXHAUST / RA
Scale NTS	Rev. 3	Drawing Number G806-003

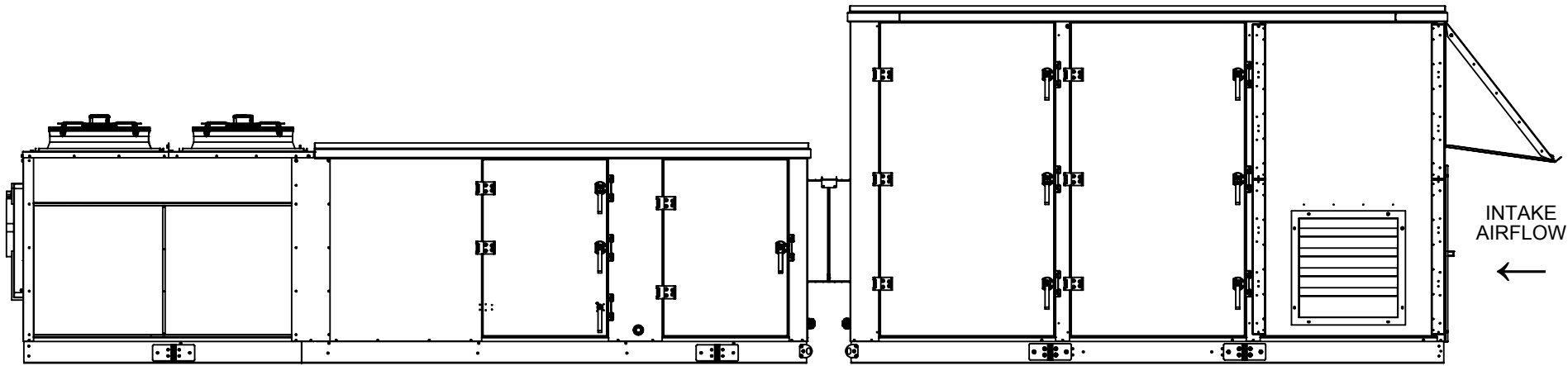
DESERT AIRE

N120 W18485 FREISTADT RD
GERMANTOWN, WI 53022
Tel: (262) 946-7400
Fax: (262) 946-7401

TOP VIEW
BOTTOM CUSTOMERS
CONNECTION



LEFT SIDE VIEW
BASE RETURN



AIR FLOW	UNIT CABINET SIZES	UNIT SIZE (TONS)	R2	S2	X3	Y3
DOWN FLOW	50	08	155 1/4	6 3/8	168 7/8	6 1/2
		10	155 1/4	6 3/8	168 7/8	6 1/2
		12	155 1/4	6 3/8	168 7/8	6 1/2
		15	155 1/4	6 3/8	168 7/8	6 1/2
DOWN FLOW	82	20	162	6 3/8	179 3/4	6 3/8
		25	162	6 3/8	179 3/4	6 3/8
		30	162	6 3/8	179 3/4	6 3/8

NOTE:
REFER TO SHEET 1 FOR GENERAL NOTES.

Desert Aire has a policy of continuous product and quality improvement. Specifications and dimensions are subject to change without notice. This drawing and information contained herein are the exclusive property of the Desert Aire Corporation. Any use detrimental to the interests of Desert Aire is prohibited.

ALL DIMENSIONS ARE IN INCHES
TOLERANCE $\pm 1/8"$

All Dimensions in Inches
All Angles 90°
All outside corners 0.125" fillet
Unless Otherwise Specified



Third Angle Projection

Part weight

Tolerance Unless
Otherwise Specified
X.X $\pm .125$
X.XX $\pm .060$
X.XXX $\pm .030$
Angles $\pm 1^\circ$

Drawn
MHB

Sheet
4/10

Scale
NTS

Date Released



N120 W18485 FREISTADT RD
GERMANTOWN, WI 53022
Tel: (262) 946-7400
Fax: (262) 946-7401

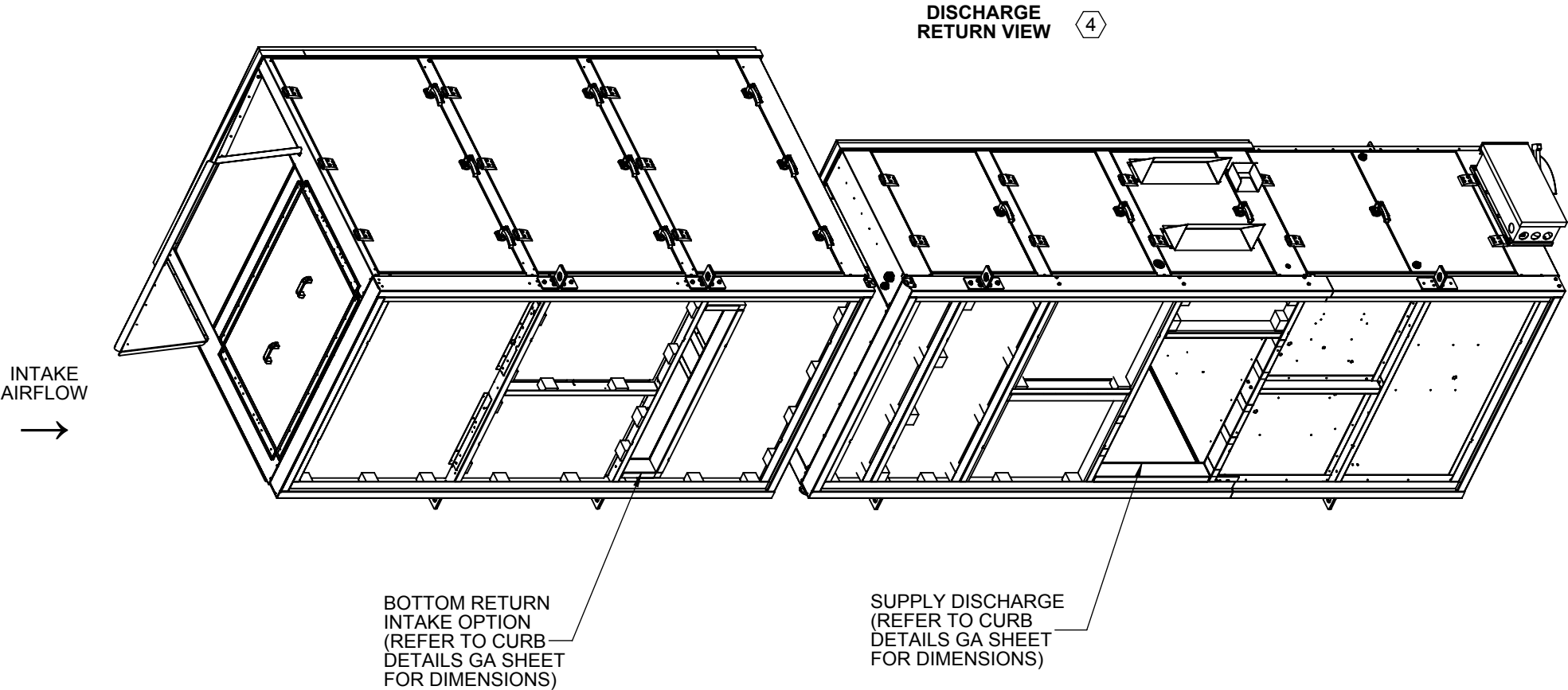
Description
AURA AIR COOLED PKGD W/WHEEL

Page Title
CUSTOMER INTERFACE GA

Drawing Number
G806-003

UNIT CABINET SIZES	UNIT SIZE (TONS)	DOWN DISCHARGE, DOWN RETURN	FOR 1-GA S HEATER ADD (LBS)	FOR 2-GA S HEATER ADD (LBS)	FOR ELECTRIC HEATER ADD (LBS)	WHEEL MODULE ESTIMATED BASE WEIGHT (LBS)	UNIT FILTER QTY	UNIT FILTER SIZE	WHEEL MODULE RETURN AIR	WHEEL MODULE RETURN AIR	WHEEL MODULE OUTSIDE	WHEEL MODULE OUTSIDE
		ESTIMATED BASE WEIGHT (LBS)							FILTER QTY	FILTER SIZE	AIR FILTER QTY	AIR FILTER SIZE
50	08	2120	345	NA	170	2040	6	20x16x4	3	24x20x4	3	24x20x4
	10	2222	345	NA	170	2040	6	20x16x4	3	24x20x4	3	24x20x4
	12	2233	345	NA	170	2044	6	20x16x4	3	24x20x4	3	24x20x4
	15	2242	345	NA	170	2105	6	20x16x4	3	24x20x4	3	24x20x4
82	20	4063	487	598	240	3445	8	24x20x4	8	24x20x2	8	24x20x2
	25	4114	487	598	240	3540	8	24x20x4	8	24x20x2	8	24x20x2
	30	4580	487	598	240	3540	8	24x20x4	8	24x20x2	8	24x20x2

NOTE: TO CALCULATE THE SYSTEM WEIGHT ADD THE BASE WEIGHT TO THE WHEEL MODULE AND THE CORRECT HEATER OPTION WEIGHT. (DO NOT COMBINE HEATERS).



NOTE:
REFER TO SHEET 1 FOR GENERAL NOTES.
WEIGHTS SHOWN REFLECT FULLY OPTIONED
ESTIMATED UNIT WEIGHT.
REFER TO CURB DETAILS GA SHEETS FOR SUPPLY
DUCT DIMENSION AND LOCATIONS.

Desert Aire has a policy of continuous product and quality improvement. Specifications and dimensions are subject to change without notice. This drawing and information contained herein are the exclusive property of the Desert Aire Corporation. Any use detrimental to the interests of Desert Aire is prohibited.

ALL DIMENSIONS ARE IN INCHES
TOLERANCE ± 1/8"

All Dimensions in Inches
All Angles 90°
All outside corners 0.125" fillet
Unless Otherwise Specified

Third Angle Projection

Part weight

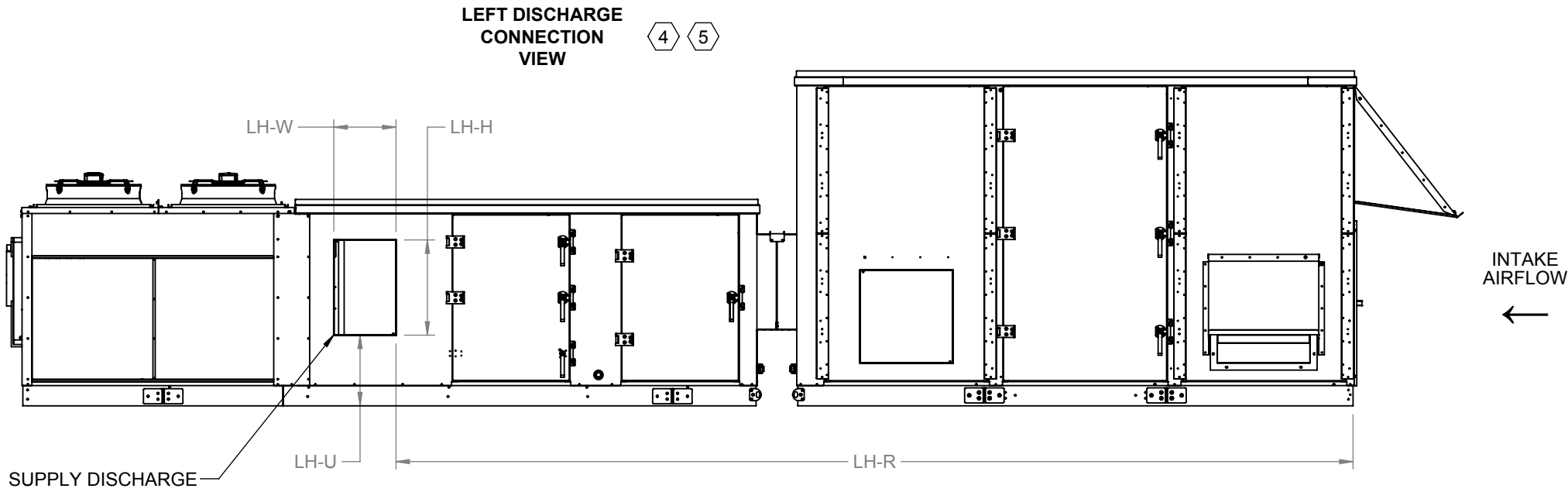
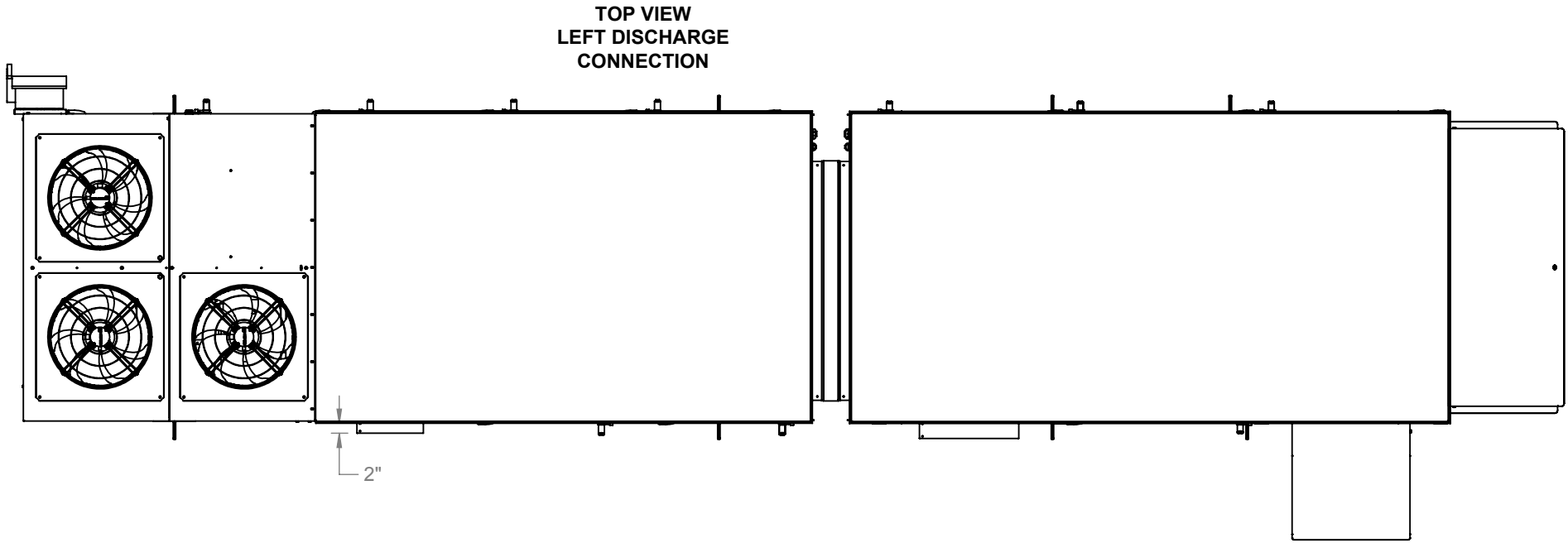
Tolerance Unless Otherwise Specified	
X.X	±.125
X.XX	±.060
X.XXX	±.030
Angles	±1°

Drawn	Date Released
MHB	
Sheet	5/10
Scale	NTS

Rev.	3
------	---

N120 W18485 FREISTADT RD
GERMANTOWN, WI 53022
Tel: (262) 946-7400
Fax: (262) 946-7401

Description	AURA AIR COOLED PKGD W/WHEEL
Page Title	DOWN DISCHARGE
Drawing Number	G806-003



UNIT CABINET SIZES	UNIT SIZE (TONS)	SIDE SUPPLY DISCHARGE (in.)			
		LH-W	LH-H	LH-U	LH-R
50	08	13 3/8	20 1/2	15 1/8	206
	10	13 3/8	20 1/2	15 1/8	206
	12	13 3/8	20 1/2	15 1/8	206
	15	13 3/8	20 1/2	15 1/8	206
82	20	20 1/8	40 1/8	13 1/4	227
	25	20 1/8	40 1/8	13 1/4	227
	30	20 1/8	40 1/8	13 1/4	227

NOTE:
REFER TO SHEET 1 FOR GENERAL NOTES.
REFER TO CURB DETAILS GA SHEETS FOR RETURN
DUCT DIMENSION AND LOCATIONS.
THE STANDARD AND RETURN AIR CURBS SHOULD BE USED.

Desert Aire has a policy of continuous product and quality improvement. Specifications and dimensions are subject to change without notice. This drawing and information contained herein are the exclusive property of the Desert Aire Corporation. Any use detrimental to the interests of Desert Aire is prohibited.

ALL DIMENSIONS ARE IN INCHES
TOLERANCE $\pm 1/8"$

All Dimensions in Inches
All Angles 90°
All outside corners 0.125" fillet
Unless Otherwise Specified

Third Angle Projection

Part weight

Tolerance Unless Otherwise Specified	
X.X	$\pm .125$
X.XX	$\pm .060$
X.XXX	$\pm .030$
Angles	$\pm 1^\circ$

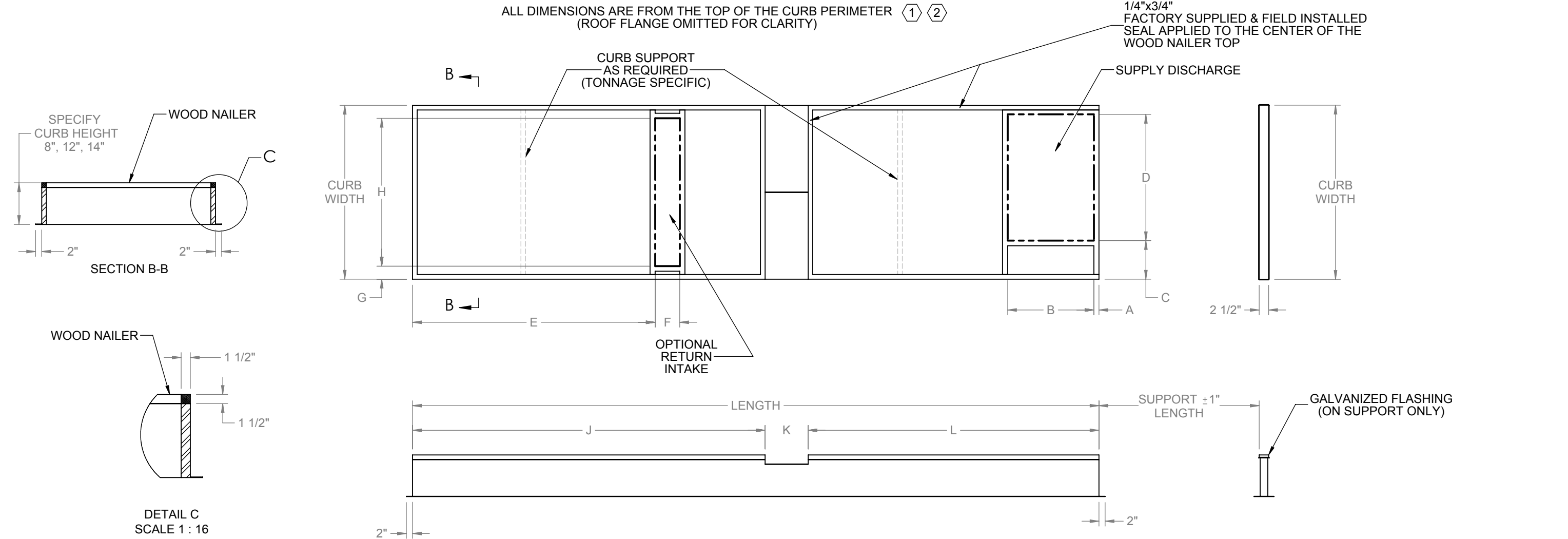
Drawn	Date Released	Description
MHB		AURA AIR COOLED PKGD W/WHEEL
Sheet	6/10	Page Title
Scale	NTS	Drawing Number
		G806-003

N120 W18485 FREISTADT RD
GERMANTOWN, WI 53022
Tel: (262) 946-7400
Fax: (262) 946-7401

Rev.	3
------	---

NOTE:
CURB WEIGHT IS BASED ON
A 14" CURB WITH RETURN AIR.

UNIT CABINET SIZES	UNIT SIZE (TONS)	2 PIECE CURB						SUPPLY DISCHARGE (in.)				RETURN INTAKE (in.)				WHEEL	SPACE	UNIT
		CURB P/N STANDARD	CURB P/N W/ RA	CURB WEIGHT W/ RA	WIDTH (in.)	LENGTH (in.)	SUPPORT LENGTH (in.)	A	B	C	D	E	F	G	H	J	K	L
50	08	CB08XPC105-XX2	CB08XPF105-XX2	595	56 1/2	223	52 1/4	1 1/2	28	12 1/2	41	78 7/8	8	4 1/4	48	114 1/2	14	94 1/2
	10	CB10XPC105-XX2	CB10XPF105-XX2	595	56 1/2	223	52 1/4	1 1/2	28	12 1/2	41	78 7/8	8	4 1/4	48	114 1/2	14	94 1/2
	12	CB12XPC105-XX2	CB12XPF105-XX2	595	56 1/2	223	52 1/4	1 1/2	28	12 1/2	41	78 7/8	8	4 1/4	48	114 1/2	14	94 1/2
	15	CB15XPC105-XX2	CB15XPF105-XX2	595	56 1/2	223	52 1/4	1 1/2	28	12 1/2	41	78 7/8	8	4 1/4	48	114 1/2	14	94 1/2
82	20	CB20XPC105-XX2	CB20XPF105-XX2	800	89 1/4	251 1/8	48	1 1/2	28	12 7/8	74	82 1/4	12	4 5/8	80	114 1/2	14	125 3/4
	25	CB25XPC105-XX2	CB25XPF105-XX2	800	89 1/4	251 1/8	48	1 1/2	28	12 7/8	74	82 1/4	12	4 5/8	80	114 1/2	14	125 3/4
	30	CB30XPC105-XX2	CB30XPF105-XX2	800	89 1/4	251 1/8	72	1 1/2	28	12 7/8	74	82 1/4	12	4 5/8	80	114 1/2	14	125 3/4



- NOTES:
REFER TO SHEET 1 FOR GENERAL NOTES.
1. 14 GA. GALVANIZED STEEL CONSTRUCTION.
 2. FULLY WELDED WATERTIGHT ONE PIECE CURB.
 3. PRIME PAINTED AFTER FABRICATION.
 4. PRESSURE TREATED 1X4 WOOD NAILER.
 5. THE CURB HAS 1-1/2" THICK 3LB/FT³ FIBERGLASS PERIMETER INSULATION.
 6. INTERNAL ANGLE REINFORCEMENT.

Desert Aire has a policy of continuous product and quality improvement. Specifications and dimensions are subject to change without notice. This drawing and information contained herein are the exclusive property of the Desert Aire Corporation. Any use detrimental to the interests of Desert Aire is prohibited.

ALL DIMENSIONS ARE IN INCHES
TOLERANCE ± 1/8"

All Dimensions in Inches
All Angles 90°
All outside corners 0.125" fillet
Unless Otherwise Specified

Third Angle Projection

Part weight

Tolerance Unless
Otherwise Specified
X.X ±.125
X.XX ±.060
X.XXX ±.030
Angles ±1°

Drawn
MHB

Date Released
7/10

Scale
NTS

DESCRIPTION
AURA AIR COOLED PKGD W/WHEEL

Page Title
2-PC CURB

Drawing Number
G806-003

N120 W18485 FREISTADT RD
GERMANTOWN, WI 53022
Tel: (262) 946-7400
Fax: (262) 946-7401

NOTE:
CURB WEIGHT IS BASED ON
A 14" CURB WITH RETURN AIR.

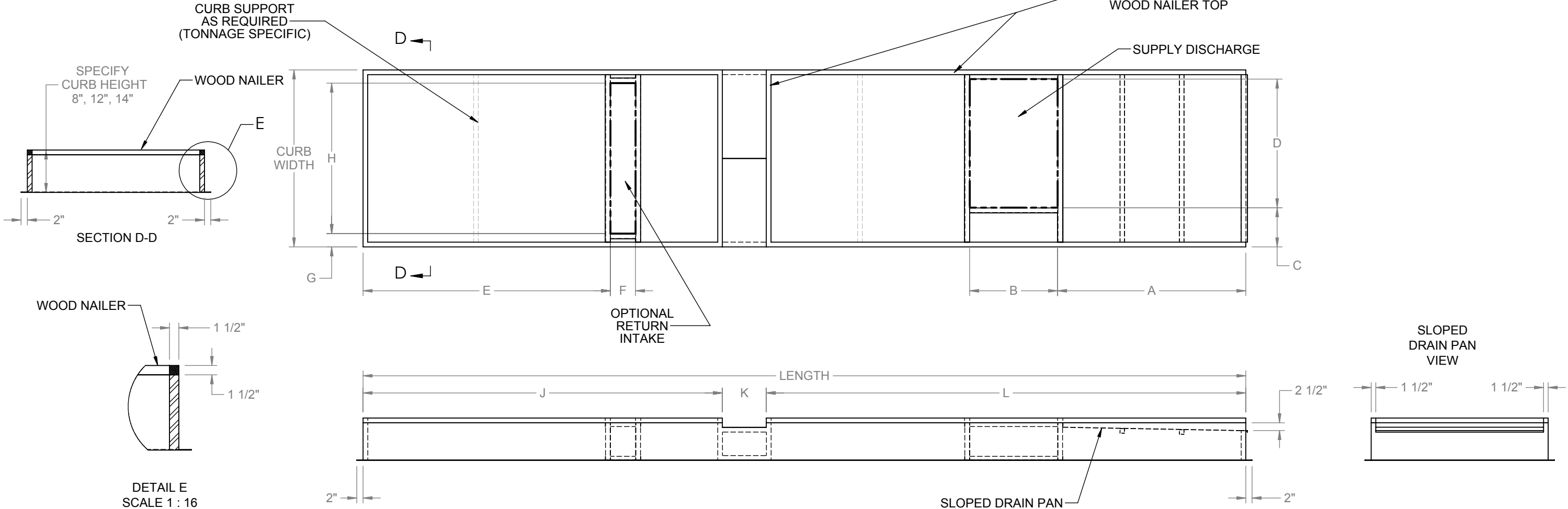


UNIT CABINET SIZES	UNIT SIZE (TONS)	1 PIECE SLOPING PAN CURB					SUPPLY DISCHARGE (in.)				RETURN INTAKE (in.)				WHEEL	SPACE	UNT
		CURB P/N STANDARD	CURB P/N W/ RA	CURB WEIGHT W/ RA A	WIDTH (in.)	LENGTH (in.)	A	B	C	D	E	F	G	H	J	K	L
50	08	CB08XPC105-XX1	CB08XPF105-XX1	725	56 1/2	281 3/8	60	28	12 1/2	41	78 7/8	8	4 1/4	48	114 1/2	14	152 3/4
	10	CB10XPC105-XX1	CB10XPF105-XX1	725	56 1/2	281 3/8	60	28	12 1/2	41	78 7/8	8	4 1/4	48	114 1/2	14	152 3/4
	12	CB12XPC105-XX1	CB12XPF105-XX1	725	56 1/2	281 3/8	60	28	12 1/2	41	78 7/8	8	4 1/4	48	114 1/2	14	152 3/4
	15	CB15XPC105-XX1	CB15XPF105-XX1	725	56 1/2	281 3/8	60	28	12 1/2	41	78 7/8	8	4 1/4	48	114 1/2	14	152 3/4
82	20	CB20XPC105-XX1	CB20XPF105-XX1	985	89 1/4	307 1/2	54 7/8	28	12 7/8	74	82 1/4	12	4 5/8	80	114 1/2	14	179
	25	CB25XPC105-XX1	CB25XPF105-XX1	985	89 1/4	307 1/2	54 7/8	28	12 7/8	74	82 1/4	12	4 5/8	80	114 1/2	14	179
	30	CB30XPC105-XX1	CB30XPF105-XX1	1050	89 1/4	331 1/2	78 7/8	28	12 7/8	74	82 1/4	12	4 5/8	80	114 1/2	14	203

ALL DIMENSIONS ARE FROM THE TOP OF THE CURB PERIMETER
(ROOF FLANGE OMITTED FOR CLARITY)




1/4"x3/4"
FACTORY SUPPLIED & FIELD INSTALLED
SEAL APPLIED TO THE CENTER OF THE
WOOD NAILER TOP



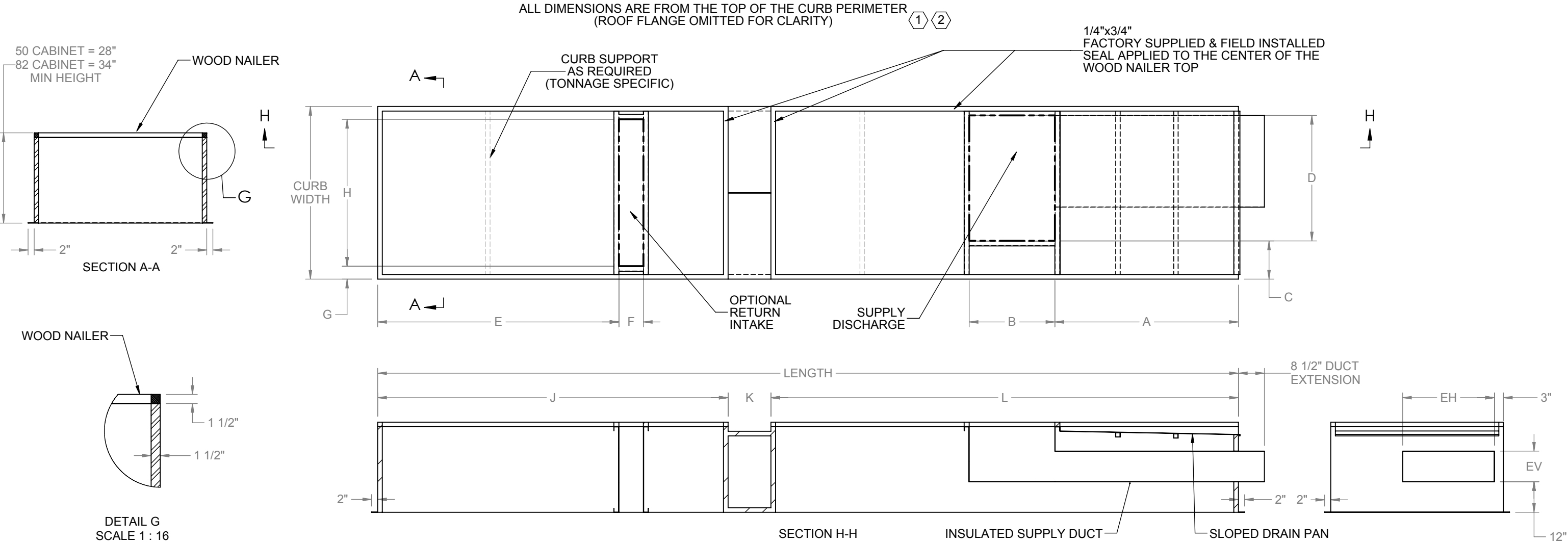
- NOTES:
REFER TO SHEET 1 FOR GENERAL NOTES.
1. 14 GA. GALVANIZED STEEL CONSTRUCTION.
 2. FULLY WELDED WATERTIGHT ONE PIECE CURB.
 3. PRIME PAINTED AFTER FABRICATION.
 4. PRESSURE TREATED 1X4 WOOD NAILER.
 5. THE CURB HAS 1-1/2" THICK 3LB/FT³ FIBERGLASS PERIMETER INSULATION. THE PAN ALSO HAS 1" THICK 3LB/FT³ FIBERGLASS PAN INSULATION.
 6. INTERNAL ANGLE REINFORCEMENT.

DUCT CONNECTIONS FOR DOWN DISCHARGE / DOWN RETURN

Desert Aire has a policy of continuous product and quality improvement. Specifications and dimensions are subject to change without notice. This drawing and information contained herein are the exclusive property of the Desert Aire Corporation. Any use detrimental to the interests of Desert Aire is prohibited.	All Dimensions in Inches All Angles 90° All outside corners 0.125" fillet Unless Otherwise Specified	Tolerance Unless Otherwise Specified X.X ±.125 X.XX ±.060 X.XXX ±.030 Angles ±1°	 N120 W18485 FREISTADT RD GERMANTOWN, WI 53022 Tel: (262) 946-7400 Fax: (262) 946-7401
ALL DIMENSIONS ARE IN INCHES TOLERANCE ± 1/8"	Third Angle Projection	Drawn MHB	Date Released
		Sheet	8/10
Part weight	Scale NTS	Rev. 3	Description AURA AIR COOLED PKGD W/WHEEL
		Drawing Number G806-003	Page Title 1-PC DOWN CURB DISCHARGE



UNIT CABINET SIZES	UNIT SIZE (TONS)	1 PIECE SLOPING PAN CURB					CURB SUPPLY INLET (in.)				RETURN INTAKE (in.)				WHEEL	SPACE	UNIT	SUPPLY				
		CURB P/N STANDARD	CURB P/N W/ RA	CURB WEIGHT W/ RA 	WIDTH (in.)	LENGTH (in.)	A	B	C	D	E	F	G	H				J	K	L	DISCHARGE (in.)	
																					EV	EH
50	08	CB08XPC105-XXH	CB08XPF105-XXH	925	56 1/2	281 3/8	60	28	12 1/2	41	78 7/8	8	4 1/4	48	114 1/2	14	152 3/4	10	30			
	10	CB10XPC105-XXH	CB10XPF105-XXH	925	56 1/2	281 3/8	60	28	12 1/2	41	78 7/8	8	4 1/4	48	114 1/2	14	152 3/4	10	30			
	12	CB12XPC105-XXH	CB12XPF105-XXH	925	56 1/2	281 3/8	60	28	12 1/2	41	78 7/8	8	4 1/4	48	114 1/2	14	152 3/4	10	30			
	15	CB15XPC105-XXH	CB15XPF105-XXH	925	56 1/2	281 3/8	60	28	12 1/2	41	78 7/8	8	4 1/4	48	114 1/2	14	152 3/4	10	30			
82	20	CB20XPC105-XXH	CB20XPF105-XXH	1335	89 1/4	307 1/2	54 7/8	28	12 7/8	74	82 1/4	12	4 5/8	80	114 1/2	14	179	16	54			
	25	CB25XPC105-XXH	CB25XPF105-XXH	1335	89 1/4	307 1/2	54 7/8	28	12 7/8	74	82 1/4	12	4 5/8	80	114 1/2	14	179	16	54			
	30	CB30XPC105-XXH	CB30XPF105-XXH	1400	89 1/4	331 1/2	78 7/8	28	12 7/8	74	82 1/4	12	4 5/8	80	114 1/2	14	203	16	54			

NOTE:
CURB WEIGHT IS BASED ON
A 14" CURB WITH RETURN AIR. Ⓐ

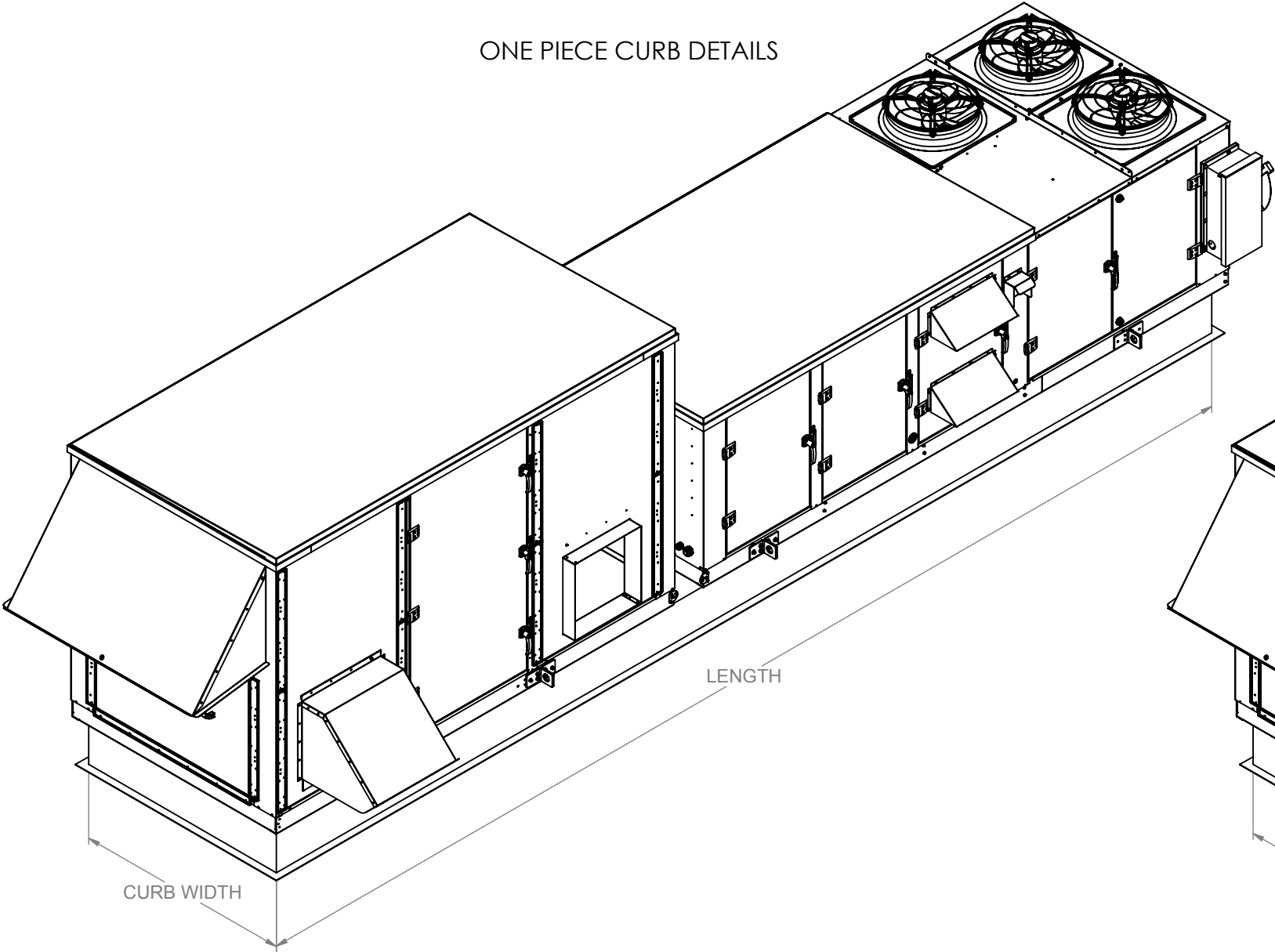


NOTES:
REFER TO SHEET 1 FOR GENERAL NOTES.
1. 14 GA. GALVANIZED STEEL CONSTRUCTION.
2. FULLY WELDED WATERTIGHT ONE PIECE CURB.
3. PRIME PAINTED AFTER FABRICATION.
4. PRESSURE TREATED 1X4 WOOD NAILER.
5. THE CURB HAS 1-1/2" THICK 3LB/FT³ FIBERGLASS PERIMETER INSULATION.
THE PAN ALSO HAS 1" THICK 3LB/FT³ FIBERGLASS PAN INSULATION.
6. INTERNAL ANGLE REINFORCEMENT.

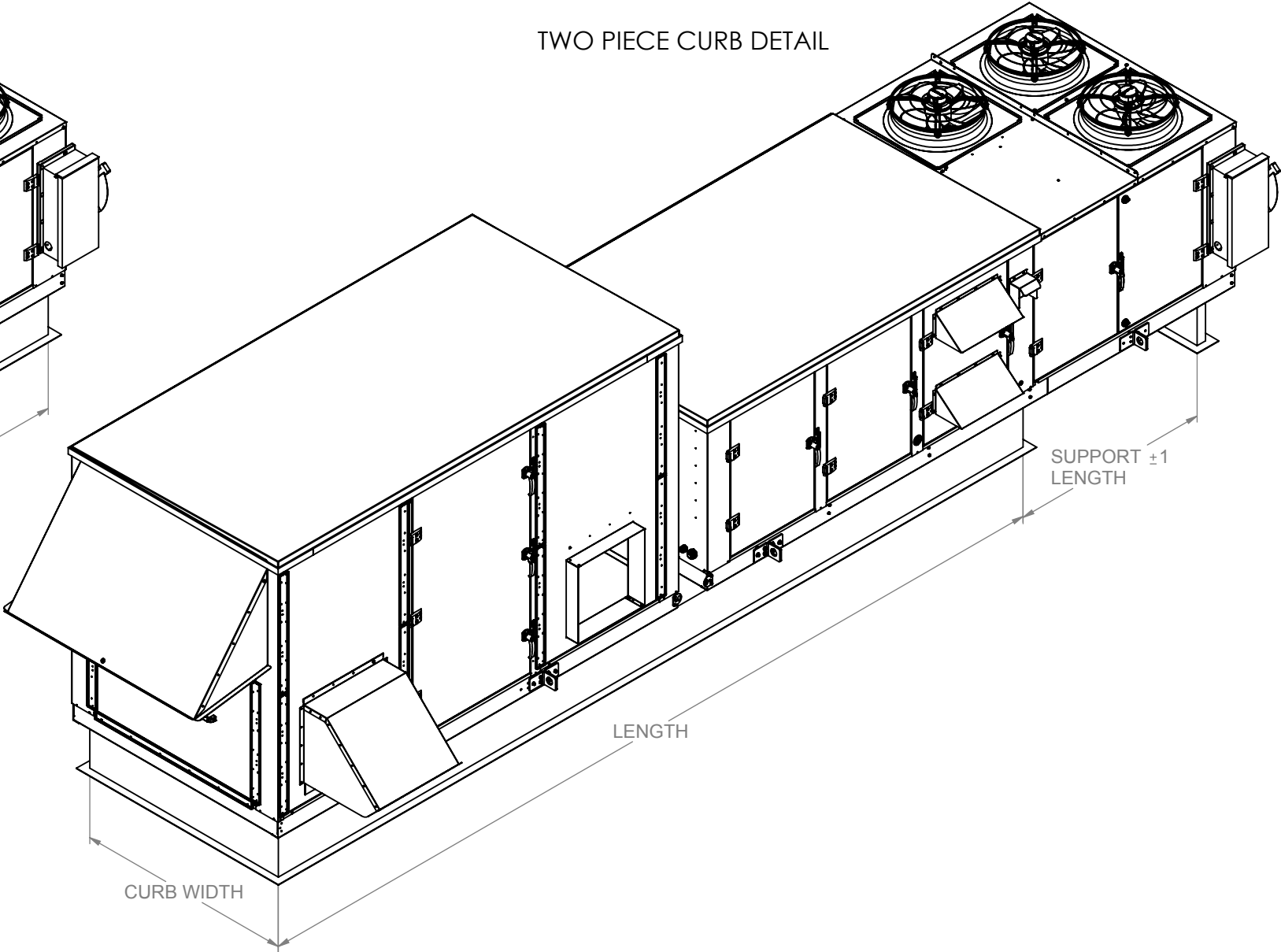
DUCT CONNECTIONS FOR DOWN DISCHARGE / DOWN RETURN

Desert Aire has a policy of continuous product and quality improvement. Specifications and dimensions are subject to change without notice. This drawing and information contained herein are the exclusive property of the Desert Aire Corporation. Any use detrimental to the interests of Desert Aire is prohibited.	<div>All Dimensions in Inches All Angles 90° All outside corners 0.125" fillet Unless Otherwise Specified</div> <div></div> <div>Third Angle Projection</div>	<div>Tolerance Unless Otherwise Specified X.X ±.125 X.XX ±.060 X.XXX ±.030 Angles ±1°</div>	<div><div>N120 W18485 FREISTADT RD GERMANTOWN, WI 53022 Tel: (262) 946-7400 Fax: (262) 946-7401</div></div>		
ALL DIMENSIONS ARE IN INCHES TOLERANCE ± 1/8"	<div>Part weight</div>	Drawn MHB		Date Released	Description AURA AIR COOLED PKGD W/WHEEL
		Sheet		9/10	Page Title 1-PC END CURB DISCHARGE
		Scale NTS		Rev. 3	Drawing Number G806-003

ONE PIECE CURB DETAILS



TWO PIECE CURB DETAIL



Desert Aire has a policy of continuous product and quality improvement. Specifications and dimensions are subject to change without notice. This drawing and information contained herein are the exclusive property of the Desert Aire Corporation. Any use detrimental to the interests of Desert Aire is prohibited.

ALL DIMENSIONS ARE IN INCHES
TOLERANCE ± 1/8"

All Dimensions in Inches
All Angles 90°
All outside corners 0.125" fillet
Unless Otherwise Specified



Third Angle Projection

Part weight

Tolerance Unless
Otherwise Specified
X.X ±.125
X.XX ±.060
X.XXX ±.030
Angles ±1°

Drawn
MHB

Sheet
10/10

Scale
NTS



N120 W18485 FREISTADT RD
GERMANTOWN, WI 53022
Tel: (262) 946-7400
Fax: (262) 946-7401

Description
AURA AIR COOLED PKGD W/WHEEL

Page Title
CURB OVERVIEW

Drawing Number
G806-003