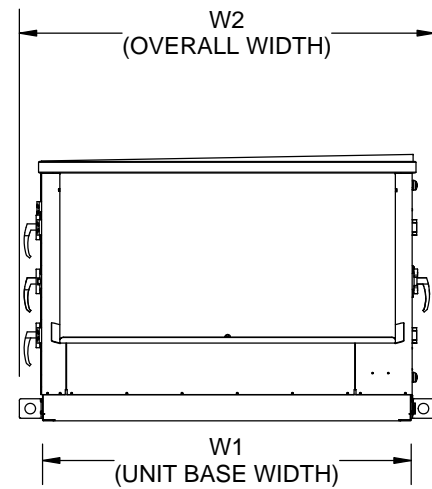


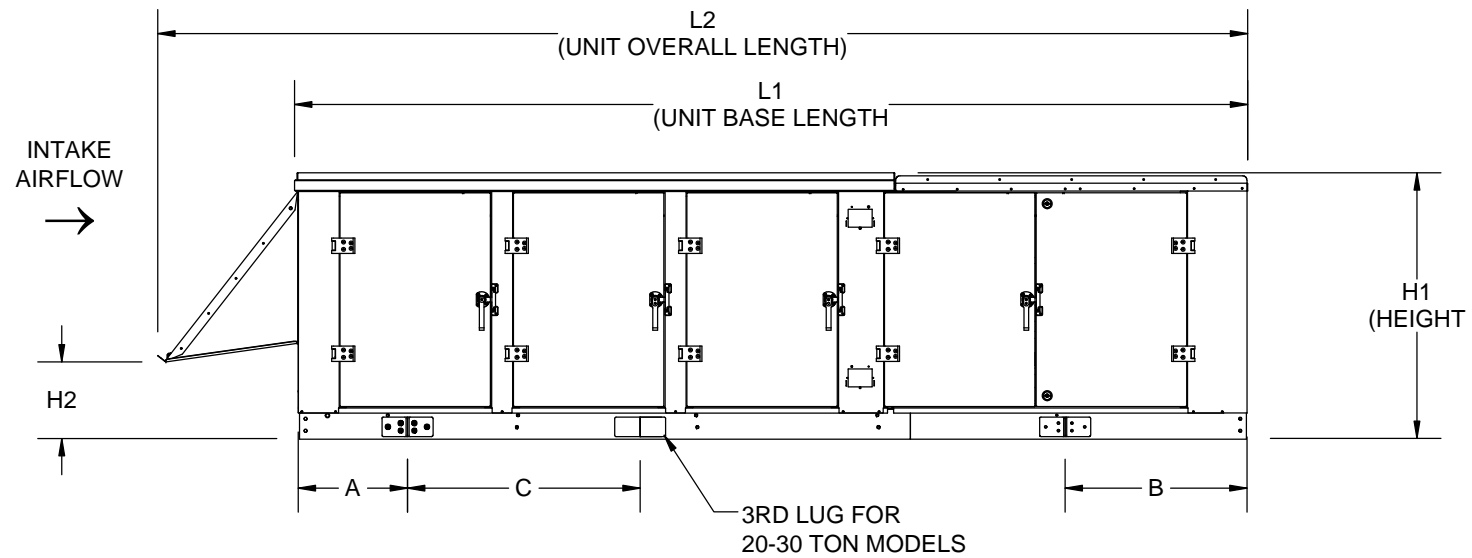
AIR FLOW	UNIT CABINET SIZES	UNIT SIZE (TONS)	L1	W1	H1	L2	W2	H2
DOWN FLOW	50	8	158 7/8	61 3/8	44 1/2	182 5/8	69 1/4	13
		10	158 7/8	61 3/8	44 1/2	182 5/8	69 1/4	13
		12	158 7/8	61 3/8	44 1/2	182 5/8	69 1/4	13
		15	158 7/8	61 3/8	44 1/2	182 5/8	69 1/4	13
DOWN FLOW	82	20	184 1/2	94 1/4	64 5/8	203 1/2	102	17 1/4
		25	184 1/2	94 1/4	64 5/8	203 1/2	102	17 1/4
		30	184 1/2	94 1/4	64 5/8	203 1/2	102	17 1/4

UNIT CABINET SIZES	UNIT SIZE (TONS)	A	B	C
50	08	18 7/8	30 3/8	N/A
	10	18 7/8	30 3/8	N/A
	12	18 7/8	30 3/8	N/A
	15	18 7/8	30 3/8	N/A
82	20	38 1/4	33 3/8	61 1/8
	25	38 1/4	33 3/8	61 1/8
	30	38 1/4	33 3/8	61 1/8

INTAKE VIEW 4 5



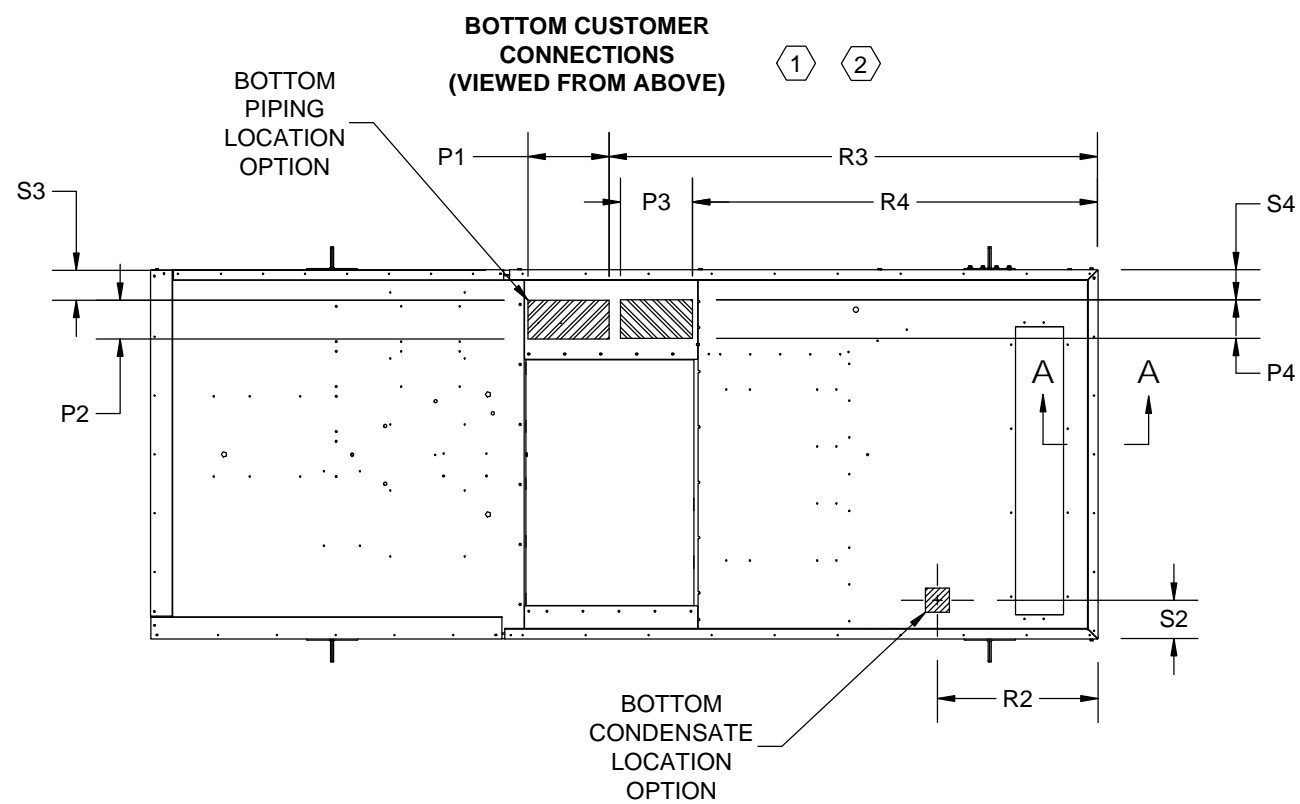
RIGHT SIDE VIEW 4 5



GENERAL NOTES AS REFERENCED BY INDIVIDUAL SHEETS:

- 1 PORTION OF SECTIONED OR DETAILED DRAWING HAS BEEN OMITTED FOR CLARITY.
- 2 HOODS OMITTED FOR CLARITY.
- 3 VIEW IS FOR PICTORIAL PURPOSES. REFER TO PAGE 1 FOR UNIT TYPE SPECIFIC VIEW.
- 4 ELECTRIC HEAT OPTION SHOWN.
- 5 OUTDOOR AIR HOOD SUPPLIED ON OUTDOOR UNITS ONLY

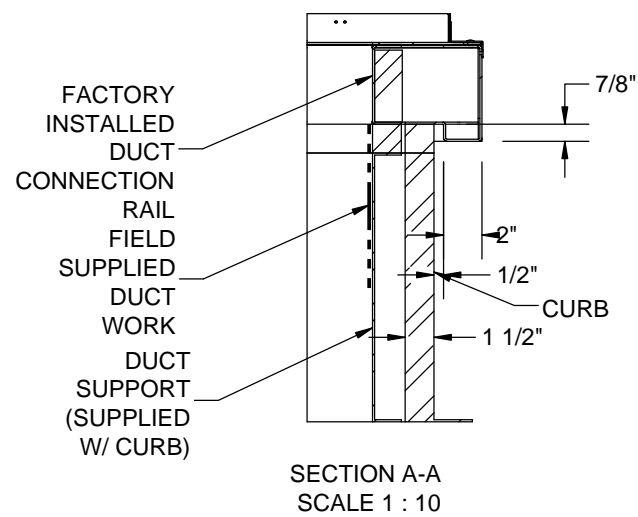
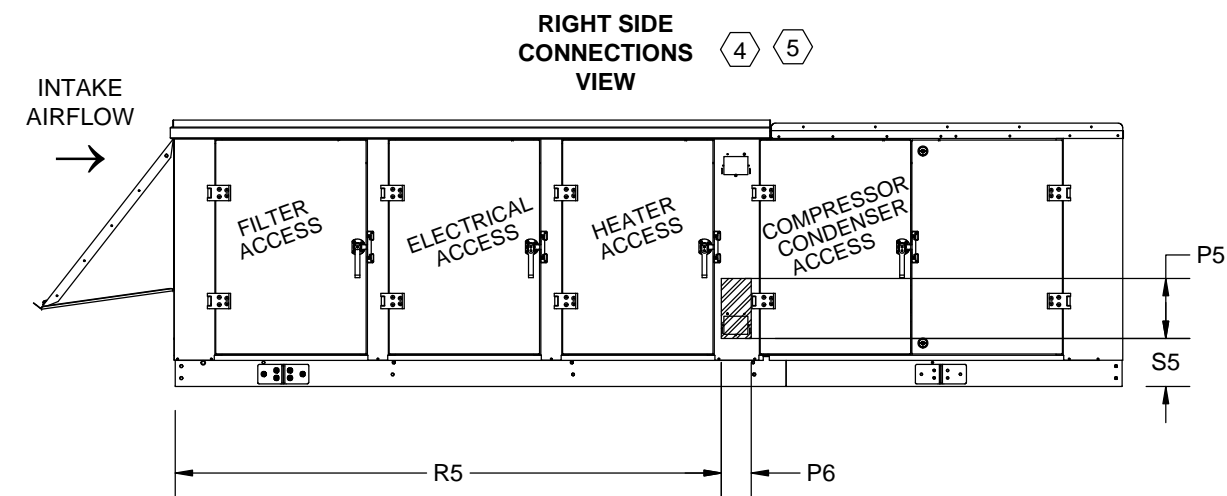
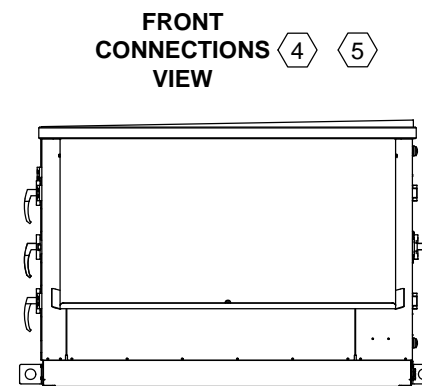
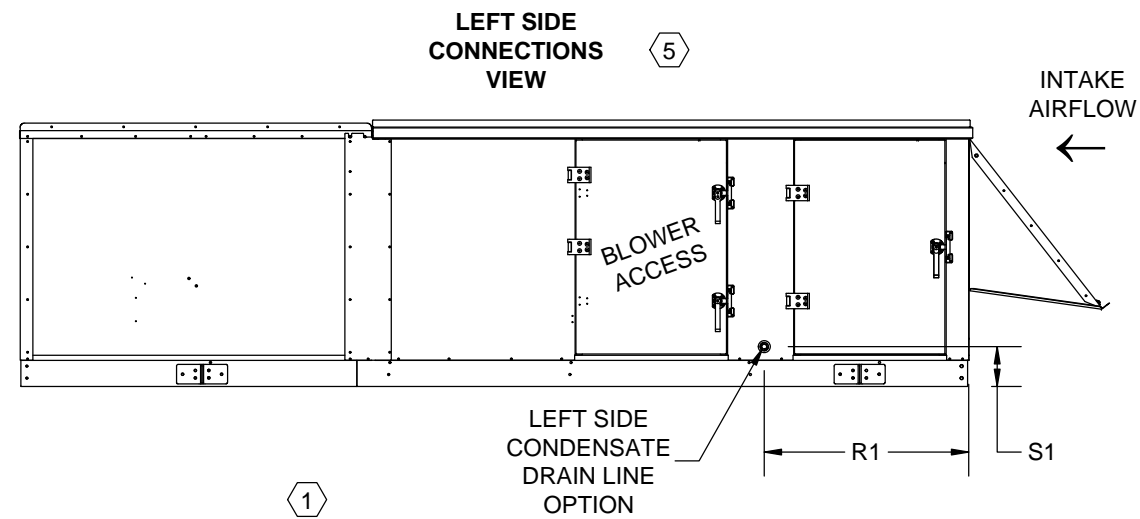
<p>Desert Aire has a policy of continuous product and quality improvement. Specifications and dimensions are subject to change without notice. This drawing and information contained herein are the exclusive property of the Desert Aire Corporation. Any use detrimental to the interests of Desert Aire is prohibited.</p> <p>ALL DIMENSIONS ARE IN INCHES TOLERANCE $\pm 1/8"$</p>	<p>All Dimensions in Inches All Angles 90° All outside corners 0.125" fillet Unless Otherwise Specified</p>	<p>Tolerance Unless Otherwise Specified X.X $\pm .125$ X.XX $\pm .060$ X.XXX $\pm .030$ Angles $\pm 1^\circ$</p>	<p>N120 W18485 FREISTADT RD GERMANTOWN, WI 53022 Tel: (262) 946-7400 Fax: (262) 946-7401</p>																
	<p>Third Angle Projection</p>	<table border="1" style="width: 100%; border-collapse: collapse;"> <tr> <td style="width: 20%;">Drawn</td> <td style="width: 20%;">Date Released</td> <td style="width: 60%;">Description</td> </tr> <tr> <td>MHB</td> <td>5/6/2013</td> <td>AURA Q-PUMP</td> </tr> <tr> <td>Sheet</td> <td>1/9</td> <td>Page Title</td> </tr> <tr> <td></td> <td></td> <td>GENERAL ARRANGEMENT</td> </tr> <tr> <td>Scale</td> <td>Rev.</td> <td>Drawing Number</td> </tr> <tr> <td>NTS</td> <td>6</td> <td>G806-002</td> </tr> </table>	Drawn	Date Released	Description	MHB	5/6/2013	AURA Q-PUMP	Sheet	1/9	Page Title			GENERAL ARRANGEMENT	Scale	Rev.	Drawing Number	NTS	6
Drawn	Date Released	Description																	
MHB	5/6/2013	AURA Q-PUMP																	
Sheet	1/9	Page Title																	
		GENERAL ARRANGEMENT																	
Scale	Rev.	Drawing Number																	
NTS	6	G806-002																	



AIR FLOW	UNIT CABINET SIZES	UNIT SIZE (TONS)	R1	S1	R2	S2	U	V	P7	P8	R6	S6	P5	P6	R5	S5
DOWN FLOW	50	08	34	6 5/8	26 3/4	6 3/8	7 3/4	62 7/8	10	7	70	5	10	6	91	8
		10	34	6 5/8	26 3/4	6 3/8	7 3/4	62 7/8	10	7	70	5	10	6	91	8
		12	34	6 5/8	26 3/4	6 3/8	7 3/4	62 7/8	10	7	70	5	10	6	91	8
		15	34	6 5/8	26 3/4	6 3/8	7 3/4	62 7/8	10	7	70	5	10	6	91	8
DOWN FLOW	82	20	27 7/8	8 5/8	33 3/4	6 5/8	8 3/4	81 3/4	12	8	84	4 1/2	8	8	117 1/4	20
		25	27 7/8	8 5/8	33 3/4	6 5/8	8 3/4	81 3/4	12	8	84	4 1/2	8	8	117 1/4	20
		30	27 7/8	8 5/8	33 3/4	6 5/8	8 3/4	81 3/4	12	8	84	4 1/2	8	8	117 1/4	20

CUSTOMER CONNECTION LINE SIZE (in.)							
UNIT SIZE	8 TONS	10 TONS	12 TONS	15 TONS	20 TONS	25 TONS	30 TONS
PIPING DIA.	2 1/8	2 1/8	2 1/8	2 1/8	2 5/8	2 5/8	2 5/8
CONDENSATE (PVC)	3/4	3/4	3/4	3/4	1 1/2	1 1/2	1 1/2

NOTES:
REFER TO SHEET 1 FOR GENERAL NOTES.



Desert Aire has a policy of continuous product and quality improvement. Specifications and dimensions are subject to change without notice. This drawing and information contained herein are the exclusive property of the Desert Aire Corporation. Any use detrimental to the interests of Desert Aire is prohibited.

All Dimensions in Inches
All Angles 90°
All outside corners 0.125" fillet
Unless Otherwise Specified

Tolerance Unless Otherwise Specified
X.X ±.125
X.XX ±.060
X.XXX ±.030
Angles ±1°

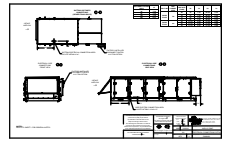
DESERT AIRE
N120 W18485 FREISTADT RD
GERMANTOWN, WI 53022
Tel: (262) 946-7400
Fax: (262) 946-7401

Third Angle Projection

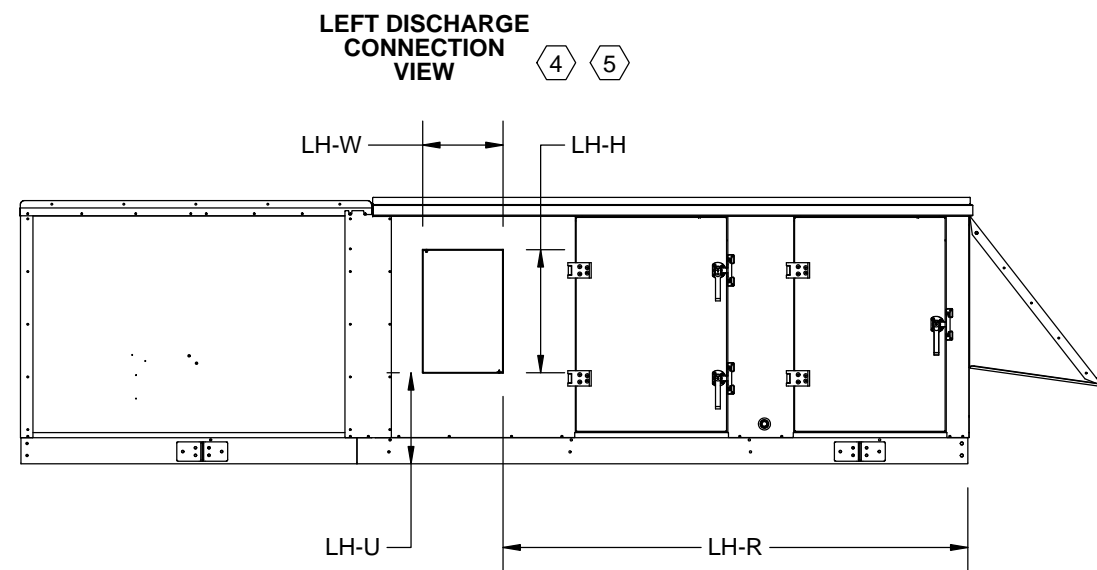
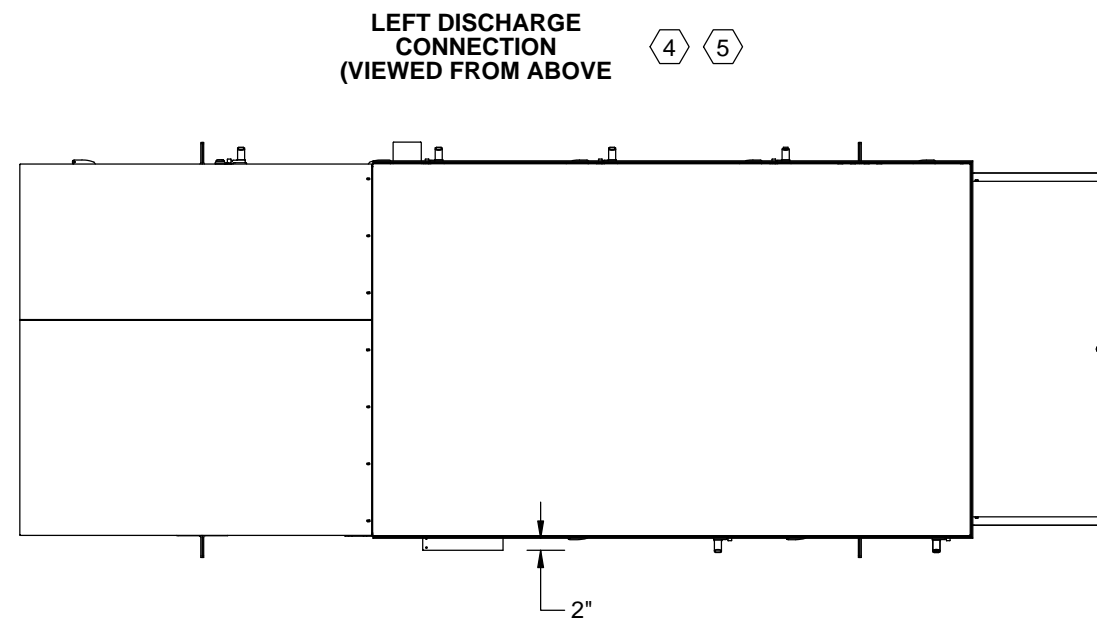
ALL DIMENSIONS ARE IN INCHES
TOLERANCE ± 1/8"

Part weight

Drawn	Date Released	Description
MHB	5/6/2013	AURA Q-PUMP
Sheet	2/9	Page Title
		CUSTOMER INTERFACE
Scale	Rev.	Drawing Number
NTS	6	G806-002



|



UNIT CABINET SIZES	UNIT SIZE (TONS)	SIDE SUPPLY DISCHARGE (in.)			
		LH-W	LH-H	LH-U	LH-R
50	08	13 3/8	20 1/2	15 1/8	77 1/2
	10	13 3/8	20 1/2	15 1/8	77 1/2
	12	13 3/8	20 1/2	15 1/8	77 1/2
	15	13 3/8	20 1/2	15 1/8	77 1/2
82	20	20 1/8	40 1/8	13 1/4	98 1/2
	25	20 1/8	40 1/8	13 1/4	98 1/2
	30	20 1/8	40 1/8	13 1/4	98 1/2

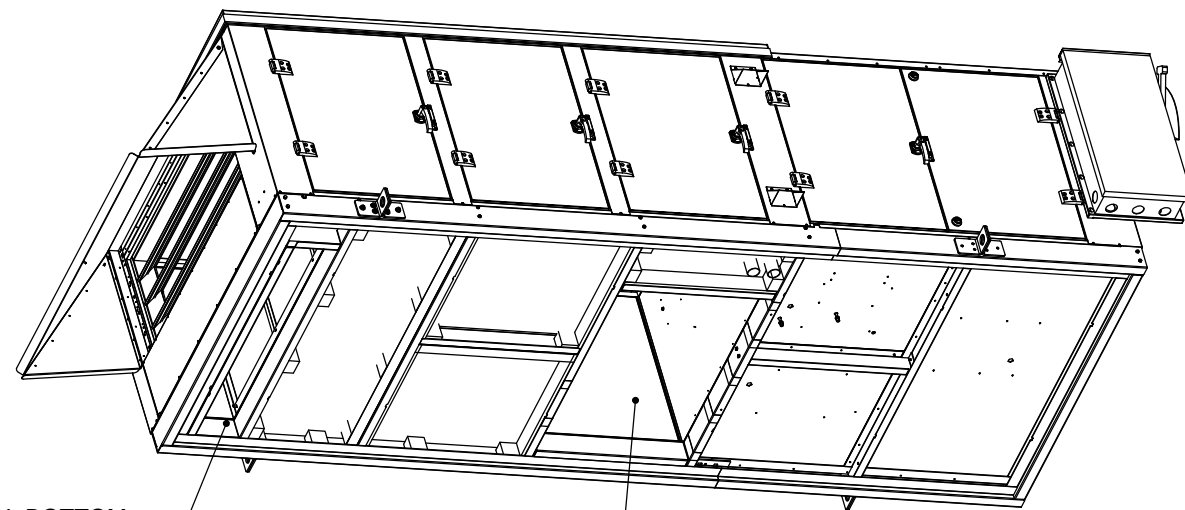
NOTES:
 REFER TO SHEET 1 FOR GENERAL NOTES.
 REFER TO CURB DETAILS GA SHEETS FOR RETURN DUCT DIMENSION AND LOCATIONS.
 THE STANDARD AND RETURN AIR CURBS SHOULD BE USED.

<p>Desert Aire has a policy of continuous product and quality improvement. Specifications and dimensions are subject to change without notice. This drawing and information contained herein are the exclusive property of the Desert Aire Corporation. Any use detrimental to the interests of Desert Aire is prohibited.</p>	<p>All Dimensions in Inches All Angles 90° All outside corners 0.125" fillet Unless Otherwise Specified</p>	<p>Tolerance Unless Otherwise Specified X.X ±.125 X.XX ±.060 X.XXX ±.030 Angles ±1°</p>	<p>N120 W18485 FREISTADT RD GERMANTOWN, WI 53022 Tel: (262) 946-7400 Fax: (262) 946-7401</p>																		
<p>Third Angle Projection</p>	<p>ALL DIMENSIONS ARE IN INCHES TOLERANCE ± 1/8"</p>	<table border="1" style="width: 100%; border-collapse: collapse;"> <tr> <td style="width: 15%;">Drawn</td> <td style="width: 15%;">Date Released</td> <td style="width: 70%;">Description</td> </tr> <tr> <td style="text-align: center;">MHB</td> <td style="text-align: center;">5/6/2013</td> <td style="text-align: center;">AURA Q-PUMP</td> </tr> <tr> <td>Sheet</td> <td style="text-align: center;">4/9</td> <td>Page Title</td> </tr> <tr> <td></td> <td></td> <td style="text-align: center;">SIDE DISCHARGE</td> </tr> <tr> <td>Scale</td> <td>Rev.</td> <td>Drawing Number</td> </tr> <tr> <td style="text-align: center;">NTS</td> <td style="text-align: center;">6</td> <td style="text-align: center;">G806-002</td> </tr> </table>	Drawn	Date Released	Description	MHB	5/6/2013	AURA Q-PUMP	Sheet	4/9	Page Title			SIDE DISCHARGE	Scale	Rev.	Drawing Number	NTS	6	G806-002	
Drawn	Date Released	Description																			
MHB	5/6/2013	AURA Q-PUMP																			
Sheet	4/9	Page Title																			
		SIDE DISCHARGE																			
Scale	Rev.	Drawing Number																			
NTS	6	G806-002																			

UNIT CABINET SIZES	UNIT SIZE (TONS)	DOWN DISCHARGE, DOWN RETURN	FOR ELECTRIC HEATER ADD (LBS)	FILTER QTY	FILTER SIZE	A1	B1	C1	D1	P3	P4	R4	S4
		ESTIMATED BASE WEIGHT (LBS)											
50	08	2328	170	6	20x16x4	10 7/8	13	13 1/4	20	8	6	8	16
	10	2349	170	6	20x16x4	10 7/8	13	13 1/4	20	8	6	8	16
	12	2438	170	6	20x16x4	10 7/8	13	13 1/4	20	8	6	8	16
	15	3693	170	6	20x16x4	10 7/8	13	13 1/4	20	8	6	8	16
82	20	4389	240	8	24x20x4	9 1/2	18	28 1/4	24	12	6	9	26
	25	4493	240	8	24x20x4	9 1/2	18	28 1/4	24	12	6	9	26
	30	4770	240	8	24x20x4	9 1/2	18	28 1/4	24	12	6	9	26

NOTE: TO CALCULATE THE UNIT WEIGHT ADD THE BASE WEIGHT TO THE CORRECT HEATER OPTION WEIGHT (DO NOT COMBINE HEATERS).

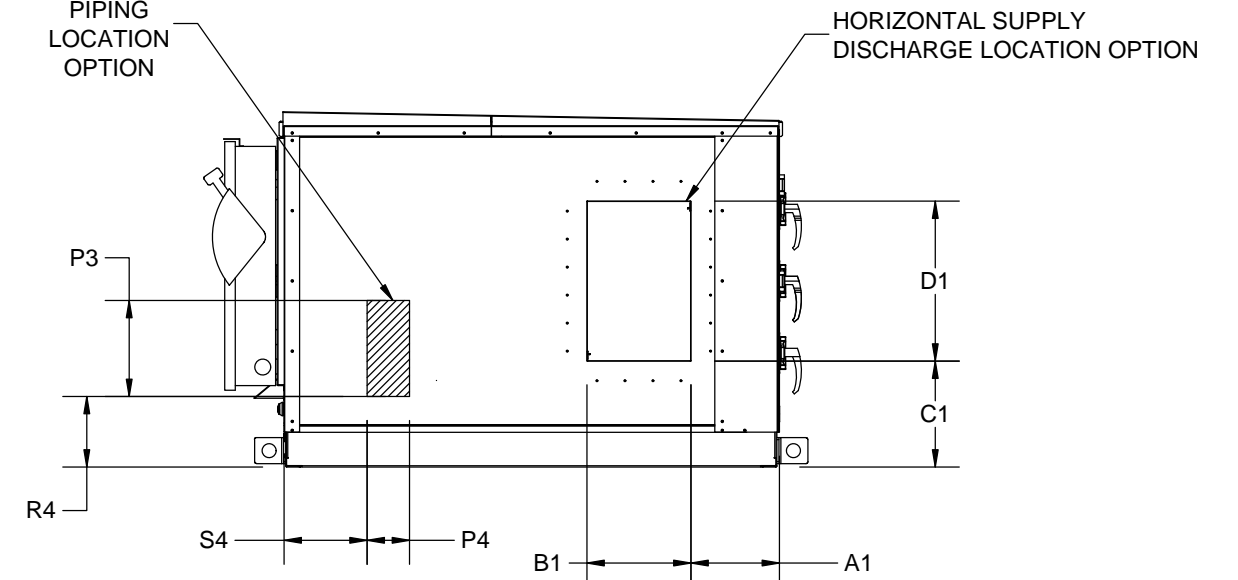
DOWN DISCHARGE AND RETURN VIEW 3 4 5




OPTIONAL BOTTOM RETURN INTAKE (REFER TO CURB DETAILS GA SHEETS FOR DIMENSIONS)

BOTTOM SUPPLY DISCHARGE OPTION LOCATION (REFER TO CURB DETAILS GA SHEETS FOR DIMENSIONS)

END DISCHARGE END PIPING END VIEW 3

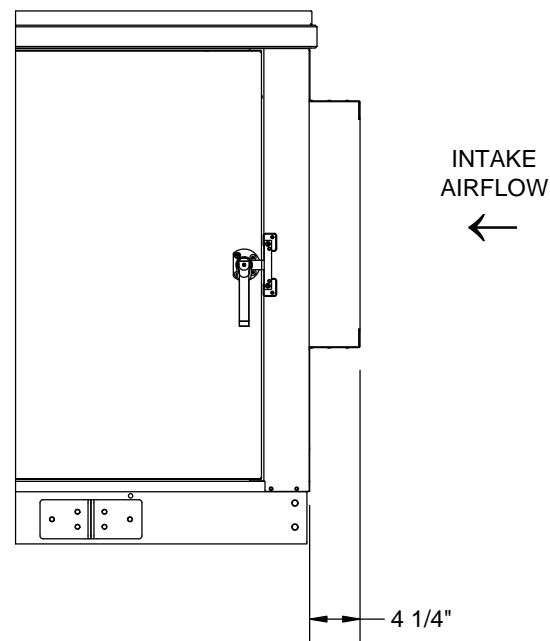


NOTES:
 REFER TO SHEET 1 FOR GENERAL NOTES.
 WEIGHTS SHOWN REFLECT FULLY OPTIONED ESTIMATED UNIT WEIGHT IN POUNDS (LBS).
 REFER TO CURB DETAILS GA SHEETS FOR SUPPLY DUCT DIMENSION AND LOCATIONS.

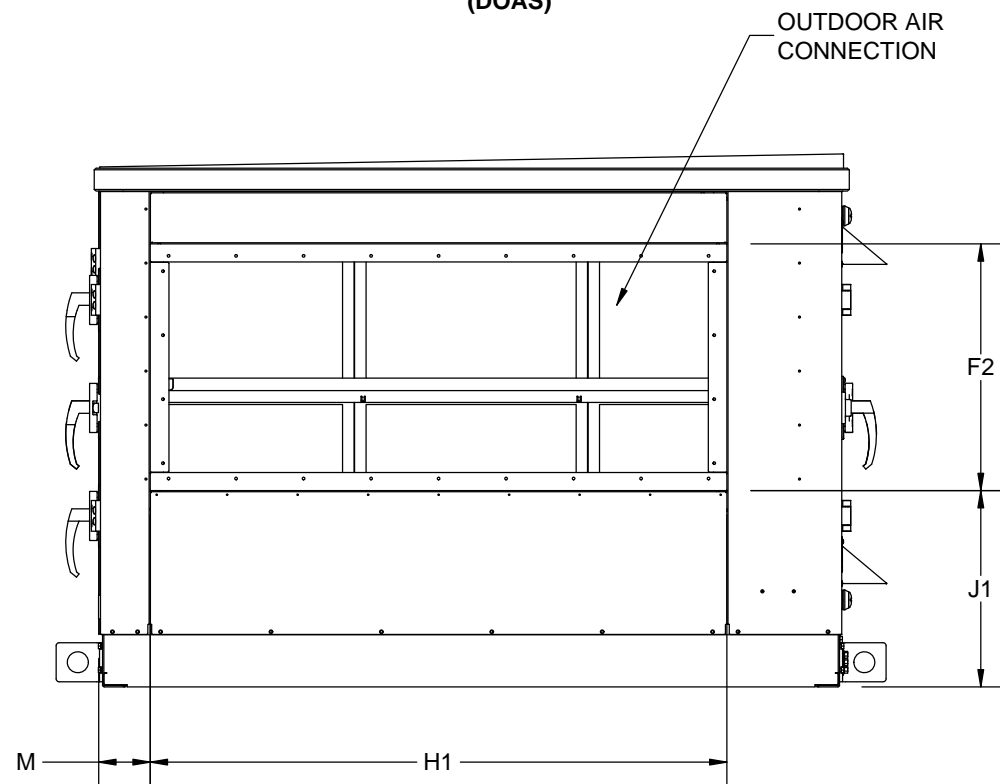
Desert Aire has a policy of continuous product and quality improvement. Specifications and dimensions are subject to change without notice. This drawing and information contained herein are the exclusive property of the Desert Aire Corporation. Any use detrimental to the interests of Desert Aire is prohibited.	All Dimensions in Inches All Angles 90° All outside corners 0.125" fillet Unless Otherwise Specified	Tolerance Unless Otherwise Specified X.X ±.125 X.XX ±.060 X.XXX ±.030 Angles ±1°	 N120 W18485 FREISTADT RD GERMANTOWN, WI 53022 Tel: (262) 946-7400 Fax: (262) 946-7401
ALL DIMENSIONS ARE IN INCHES TOLERANCE ± 1/8"	Third Angle Projection	Sheet 5/9	Page Title DOWN / END DISCHARGE
Part weight	Scale NTS	Rev. 6	Drawing Number G806-002

AIR FLOW	UNIT CABINET SIZES	UNIT SIZE (TONS)	F1	F2	H1	J1	J2	K	M	N	PIPING DIA.
DOWN FLOW	50	08	9 1/2	20 1/2	48	16 3/8	5 1/4	5 1/4	4 1/8	16 5/8	2 1/8
		10	9 1/2	20 1/2	48	16 3/8	5 1/4	5 1/4	4 1/8	16 5/8	2 1/8
		12	9 1/2	20 1/2	48	16 3/8	5 1/4	5 1/4	4 1/8	16 5/8	2 1/8
		15	9 1/2	20 1/2	48	16 3/8	5 1/4	5 1/4	4 1/8	16 5/8	2 1/8
DOWN FLOW	82	20	12	32	80	25 7/8	8 3/4	45 3/4	4 1/8	20 1/4	2 5/8
		25	12	32	80	25 7/8	8 3/4	45 3/4	4 1/8	20 1/4	2 5/8
		30	12	32	80	25 7/8	8 3/4	45 3/4	4 1/8	20 1/4	2 5/8

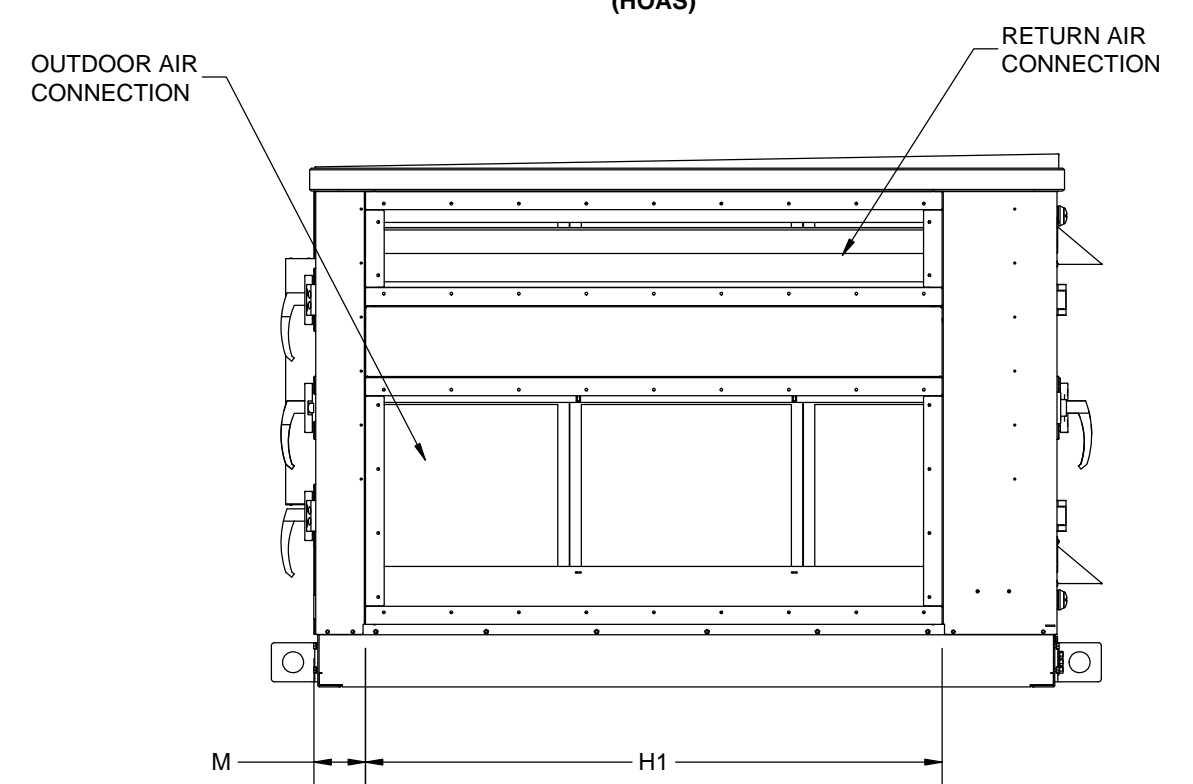
INTAKE AIR CONNECTION FLANGE DETAIL (TYP)



INTAKE VIEW WITH OA ONLY (DOAS) ④



INTAKE VIEW WITH HORIZONTAL RETURN AIR (HOAS) ④



NOTES:
REFER TO SHEET 1 FOR GENERAL NOTES.

<p>Desert Aire has a policy of continuous product and quality improvement. Specifications and dimensions are subject to change without notice. This drawing and information contained herein are the exclusive property of the Desert Aire Corporation. Any use detrimental to the interests of Desert Aire is prohibited.</p>	<p>All Dimensions in Inches All Angles 90° All outside corners 0.125" fillet Unless Otherwise Specified</p>	<p>Tolerance Unless Otherwise Specified X.X ±.125 X.XX ±.060 X.XXX ±.030 Angles ±1°</p>	<p>N120 W18485 FREISTADT RD GERMANTOWN, WI 53022 Tel: (262) 946-7400 Fax: (262) 946-7401</p>
<p>ALL DIMENSIONS ARE IN INCHES TOLERANCE ± 1/8"</p>	<p>Part weight</p>	<p>Drawn: MHB Date Released: 5/6/2013</p>	<p>Description: AURA Q-PUMP</p>
		<p>Sheet: 6/9</p>	<p>Page Title: INDOOR CONN</p>
		<p>Scale: NTS Rev: 6</p>	<p>Drawing Number: G806-002</p>

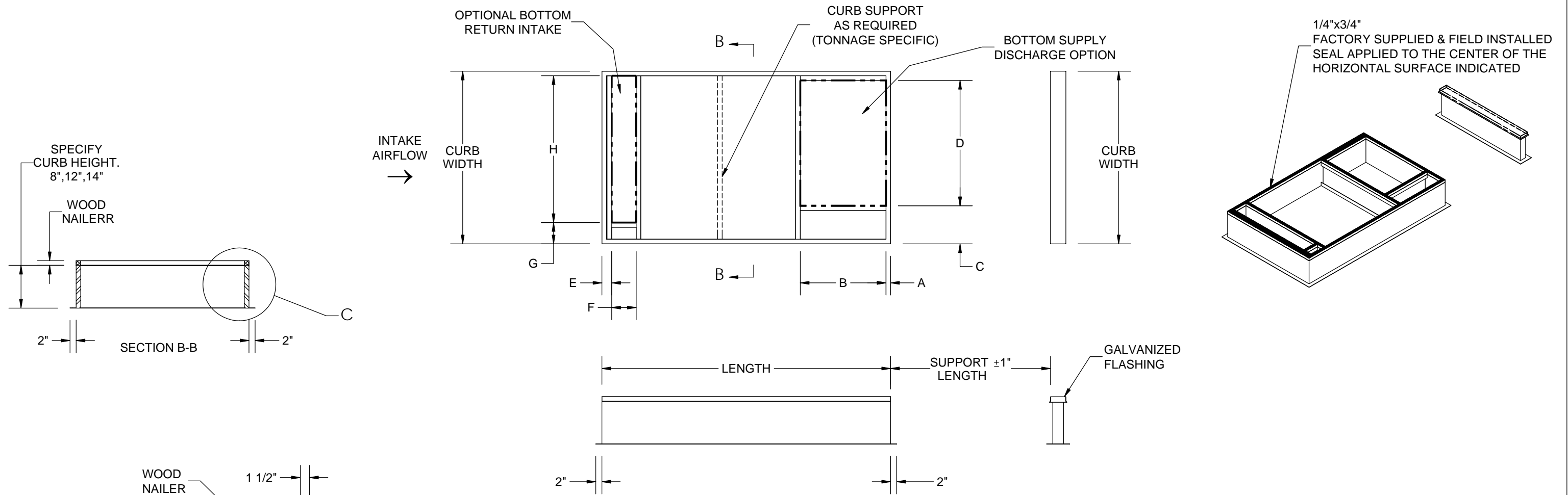
NOTES:
REFER TO SHEET 1 FOR GENERAL NOTES.

- 18 GA. GALVANIZED STEEL CONSTRUCTION.
- KNOCK DOWN CURB.
- PRIME PAINTED.
- PRESSURE TREATED 2X2 WOOD NAILER.
- 1-1/2" THICK 3LB/FT³ FIBERGLASS PERIMETER INSULATION.
- INTERNAL ANGLE REINFORCEMENT.
- XX OF PART NUMBER TO BE FILLED IN WITH THE CURB HEIGHT.

UNIT CABINET SIZES	UNIT SIZE (TONS)	2 PIECE CURB					SUPPLY DISCHARGE (in.)				RETURN INTAKE (in.)			
		CURB P/N STANDARD	CURB P/N W/ RA	WIDTH (in.)	LENGTH (in.)	SUPPORT LENGTH (in.)	A	B	C	D	E	F	G	H
50	08	CB08MNC105-XX2	CB08MNF105-XX2	56 1/2	94 1/4	52 1/4	1 1/2	28	12 1/2	41	3 1/4	8	7	48
	10	CB10MNC105-XX2	CB10MNF105-XX2	56 1/2	94 1/4	52 1/4	1 1/2	28	12 1/2	41	3 1/4	8	7	48
	12	CB12MNC105-XX2	CB12MNF105-XX2	56 1/2	94 1/4	52 1/4	1 1/2	28	12 1/2	41	3 1/4	8	7	48
	15	CB15MNC105-XX2	CB15MNF105-XX2	56 1/2	94 1/4	52 1/4	1 1/2	28	12 1/2	41	3 1/4	8	7	48
82	20	CB20MNC105-XX2	CB20MNF105-XX2	89 1/4	125 3/4	48	1 1/2	28	12 7/8	74	3 1/4	12	7 3/4	80
	25	CB25MNC105-XX2	CB25MNF105-XX2	89 1/4	125 3/4	48	1 1/2	28	12 7/8	74	3 1/4	12	7 3/4	80
	30	CB30MNC105-XX2	CB30MNF105-XX2	89 1/4	125 3/4	48	1 1/2	28	12 7/8	74	3 1/4	12	7 3/4	80

2-PC CURB TOP VIEW ① ②

ALL DIMENSIONS ARE FROM THE TOP OF THE CURB PERIMETER (ROOF FLANGE OMITTED FOR CLARITY)



----- DUCT CONNECTIONS FOR DOWN DISCHARGE / DOWN RETURN

Desert Aire has a policy of continuous product and quality improvement. Specifications and dimensions are subject to change without notice. This drawing and information contained herein are the exclusive property of the Desert Aire Corporation. Any use detrimental to the interests of Desert Aire is prohibited.	All Dimensions in Inches All Angles 90° All outside corners 0.125" fillet Unless Otherwise Specified	Tolerance Unless Otherwise Specified X.X ±.125 X.XX ±.060 X.XXX ±.030 Angles ±1°	 N120 W18485 FREISTADT RD GERMANTOWN, WI 53022 Tel: (262) 946-7400 Fax: (262) 946-7401
ALL DIMENSIONS ARE IN INCHES TOLERANCE ± 1/8"	 Third Angle Projection	Sheet: 7/9	Page Title: 2-PC CURB DETAIL GA
		Scale: NTS	Rev: 6

DETAIL C
SCALE 1 : 16

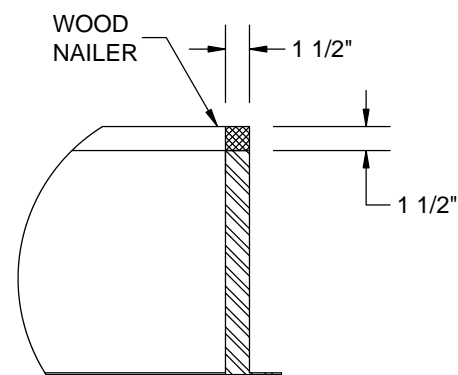
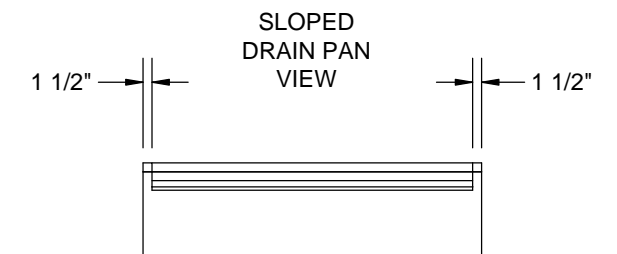
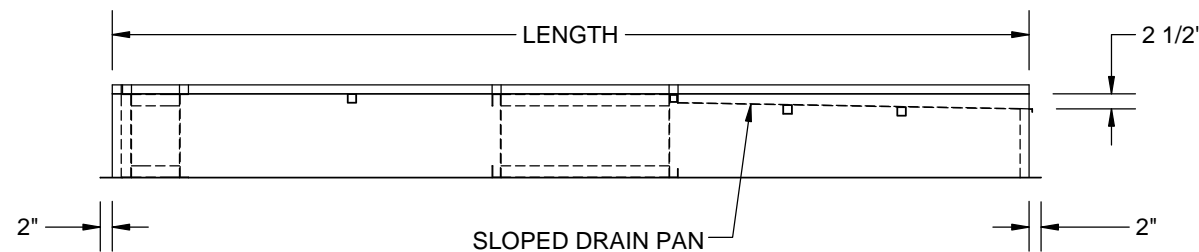
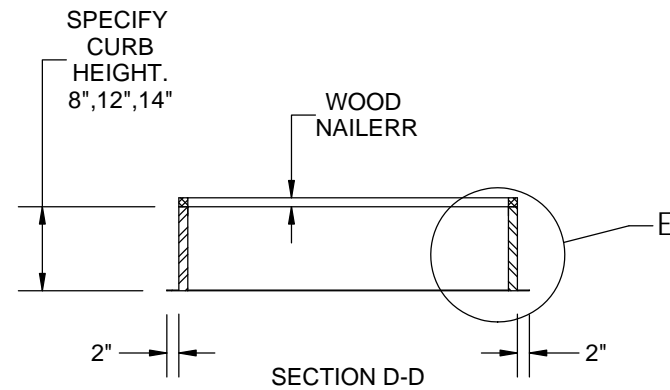
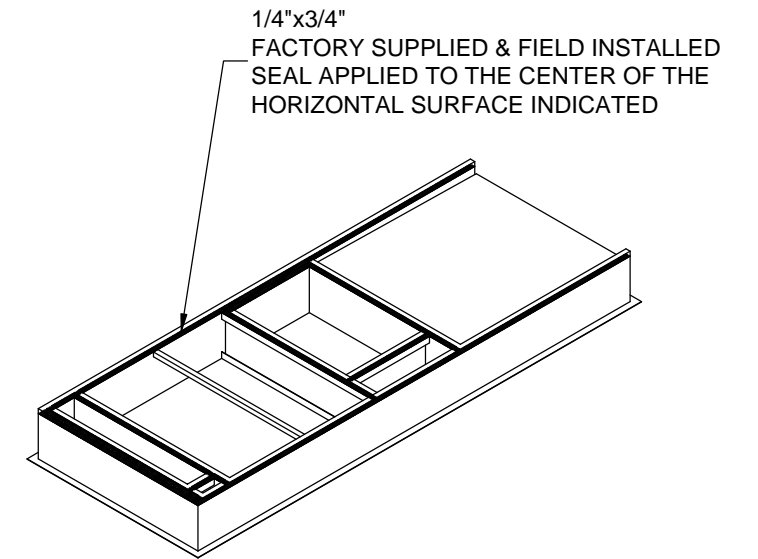
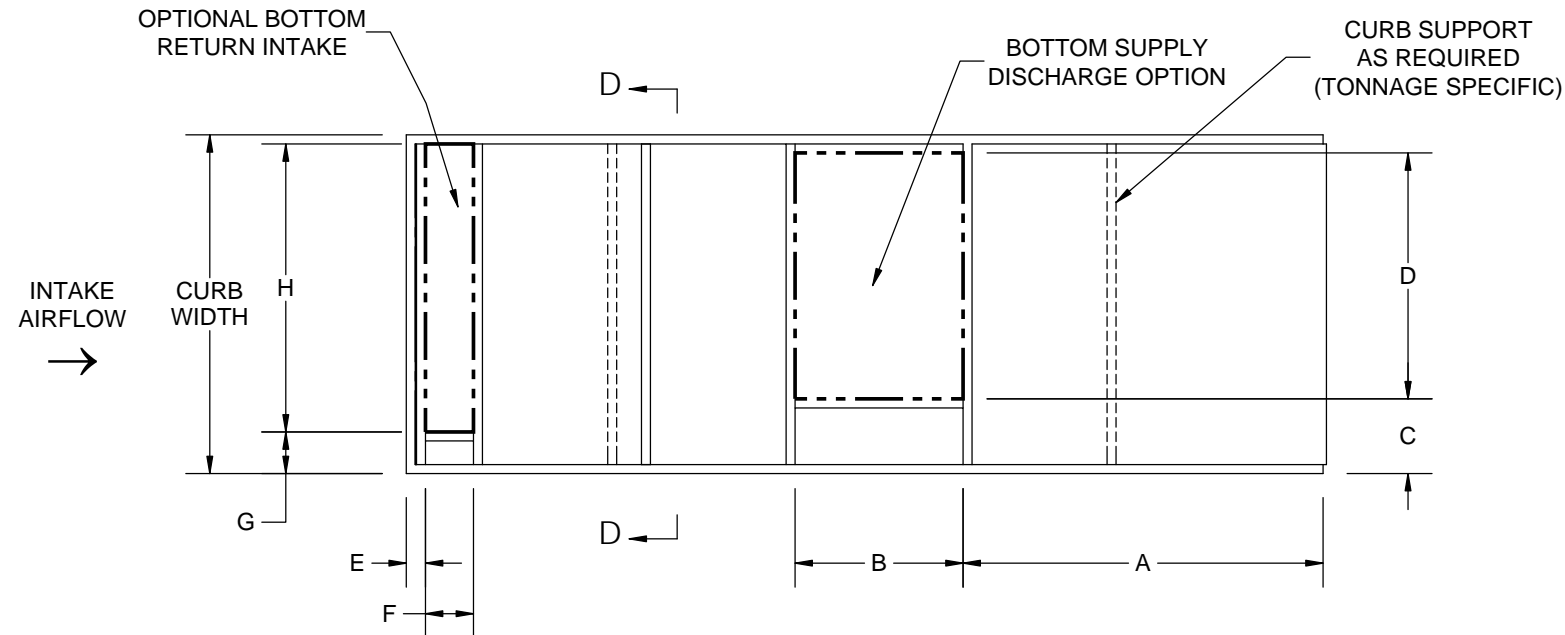
NOTES:
REFER TO SHEET 1 FOR GENERAL NOTES.

1. 14 GA. GALVANIZED STEEL CONSTRUCTION.
2. FULLY WELDED WATERTIGHT ONE PIECE CURB.
3. PRIME PAINTED AFTER FABRICATION.
4. PRESSURE TREATED 1X4 WOOD NAILER.
5. THE CURB HAS 1-1/2" THICK 3LB/FT³ FIBERGLASS PERIMETER INSULATION. THE PAN ALSO HAS 1" THICK 3LB/FT³ FIBERGLASS PAN INSULATION.
6. INTERNAL ANGLE REINFORCEMENT.
7. XX OF PART NUMBER TO BE FILLED IN WITH THE CURB HEIGHT.

UNIT CABINET SIZES	UNIT SIZE (TONS)	1 PIECE SLOPING PAN CURB				SUPPLY DISCHARGE (in.)				RETURN INTAKE (in.)			
		CURB P/N STANDARD	CURB P/N W/ RA	WIDTH (in.)	LENGTH (in.)	A	B	C	D	E	F	G	H
50	08	CB08MNC105-XX1	CB08MNF105-XX1	56 1/2	152 3/4	60	28	12 1/2	41	3 1/4	8	7	48
	10	CB10MNC105-XX1	CB10MNF105-XX1	56 1/2	152 3/4	60	28	12 1/2	41	3 1/4	8	7	48
	12	CB12MNC105-XX1	CB12MNF105-XX1	56 1/2	152 3/4	60	28	12 1/2	41	3 1/4	8	7	48
	15	CB15MNC105-XX1	CB15MNF105-XX1	56 1/2	152 3/4	60	28	12 1/2	41	3 1/4	8	7	48
82	20	CB20MNC105-XX1	CB20MNF105-XX1	89 1/4	179	54 3/4	28	12 7/8	74	3 3/4	12	8 1/4	80
	25	CB25MNC105-XX1	CB25MNF105-XX1	89 1/4	179	54 3/4	28	12 7/8	74	3 3/4	12	8 1/4	80
	30	CB30MNC105-XX1	CB30MNF105-XX1	89 1/4	179	54 3/4	28	12 7/8	74	3 3/4	12	8 1/4	80

1-PC CURB TOP VIEW ① ②

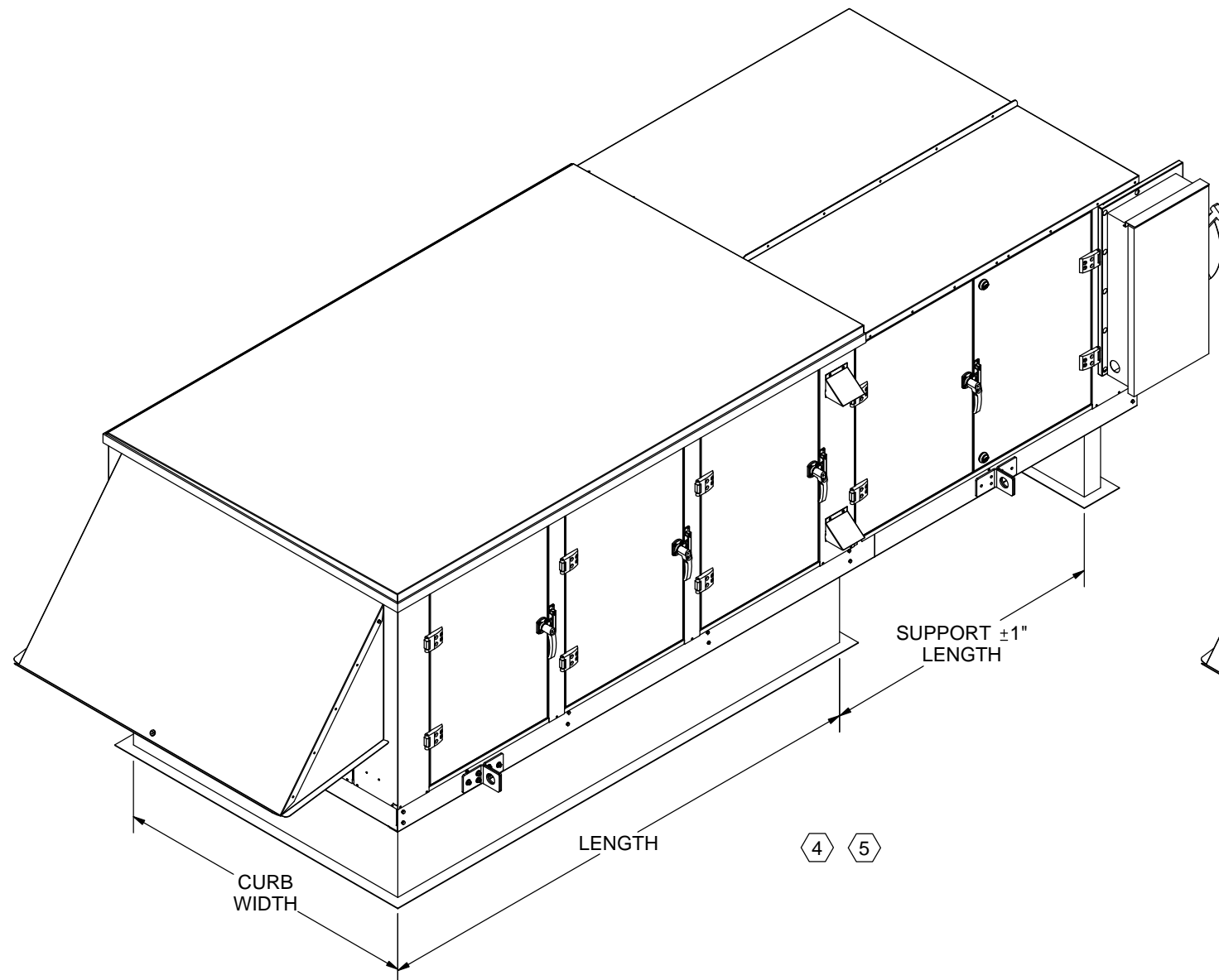
ALL DIMENSIONS ARE FROM THE TOP OF THE CURB PERIMETER (ROOF FLANGE OMITTED FOR CLARITY)



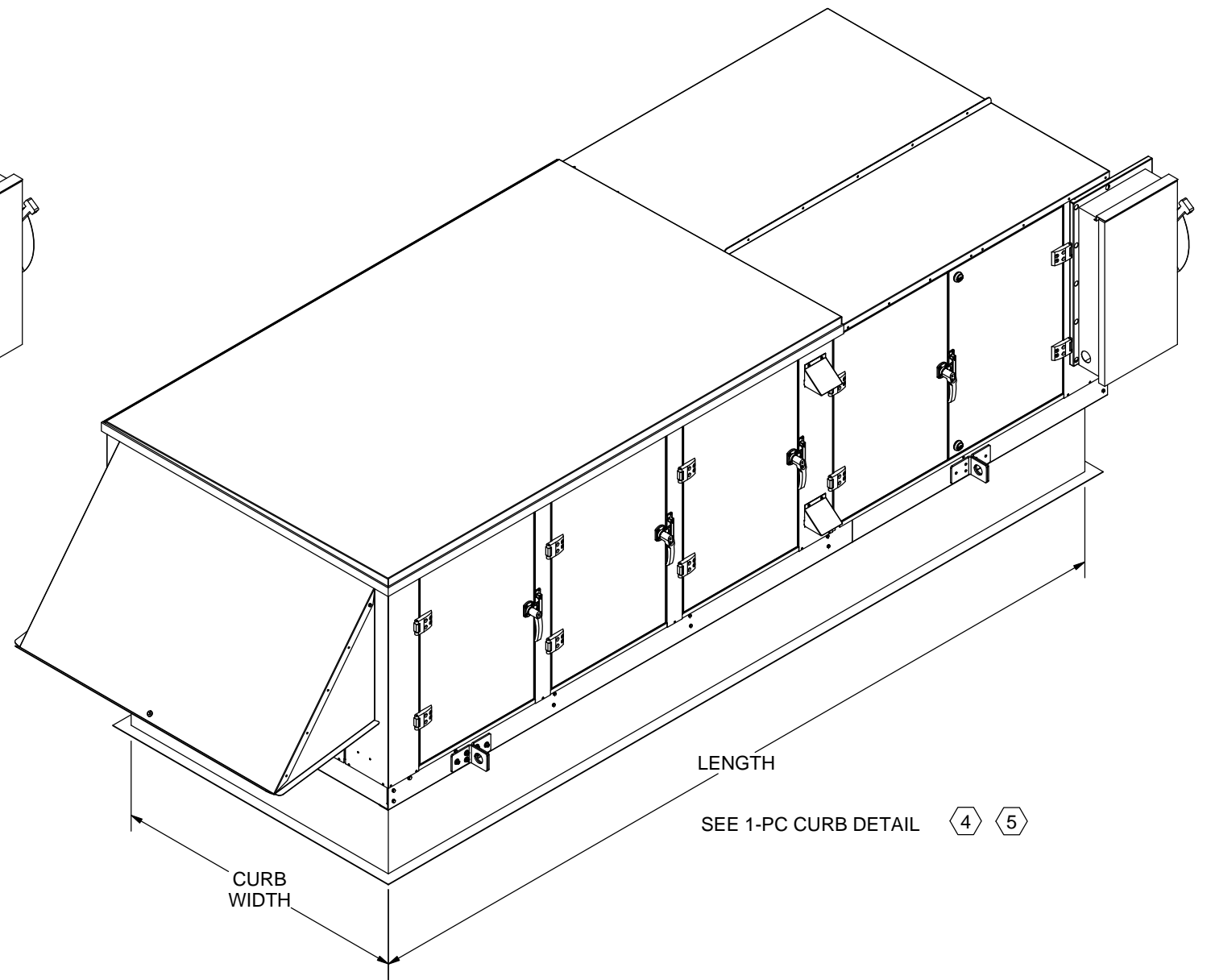
SCALE 1 : 12

DUCT CONNECTIONS FOR DOWN DISCHARGE / DOWN RETURN

Desert Aire has a policy of continuous product and quality improvement. Specifications and dimensions are subject to change without notice. This drawing and information contained herein are the exclusive property of the Desert Aire Corporation. Any use detrimental to the interests of Desert Aire is prohibited.	All Dimensions in Inches All Angles 90° All outside corners 0.125" fillet Unless Otherwise Specified	Tolerance Unless Otherwise Specified X.X ±.125 X.XX ±.060 X.XXX ±.030 Angles ±1°	 N120 W18485 FREISTADT RD GERMANTOWN, WI 53022 Tel: (262) 946-7400 Fax: (262) 946-7401
ALL DIMENSIONS ARE IN INCHES TOLERANCE ± 1/8"	Third Angle Projection	Sheet 8/9	Page Title 1-PC DOWN DETAIL GA
Part weight	Scale NTS	Rev. 6	Drawing Number G806-002




SEE 2-PC CURB DETAIL



LENGTH

SEE 1-PC CURB DETAIL

<p>Desert Aire has a policy of continuous product and quality improvement. Specifications and dimensions are subject to change without notice. This drawing and information contained herein are the exclusive property of the Desert Aire Corporation. Any use detrimental to the interests of Desert Aire is prohibited.</p>	<p>All Dimensions in Inches All Angles 90° All outside corners 0.125" fillet Unless Otherwise Specified</p>	<p>Tolerance Unless Otherwise Specified X.X ±.125 X.XX ±.060 X.XXX ±.030 Angles ±1°</p>	 <p>N120 W18485 FREISTADT RD GERMANTOWN, WI 53022 Tel: (262) 946-7400 Fax: (262) 946-7401</p>
<p>ALL DIMENSIONS ARE IN INCHES TOLERANCE ± 1/8"</p>	<p>Third Angle Projection</p>	<p>Sheet: 9/9</p>	<p>Page Title: CURB OVERVIEW</p>
<p>Part weight</p>	<p>Scale: NTS</p>	<p>Rev: 6</p>	<p>Drawing Number: G806-002</p>