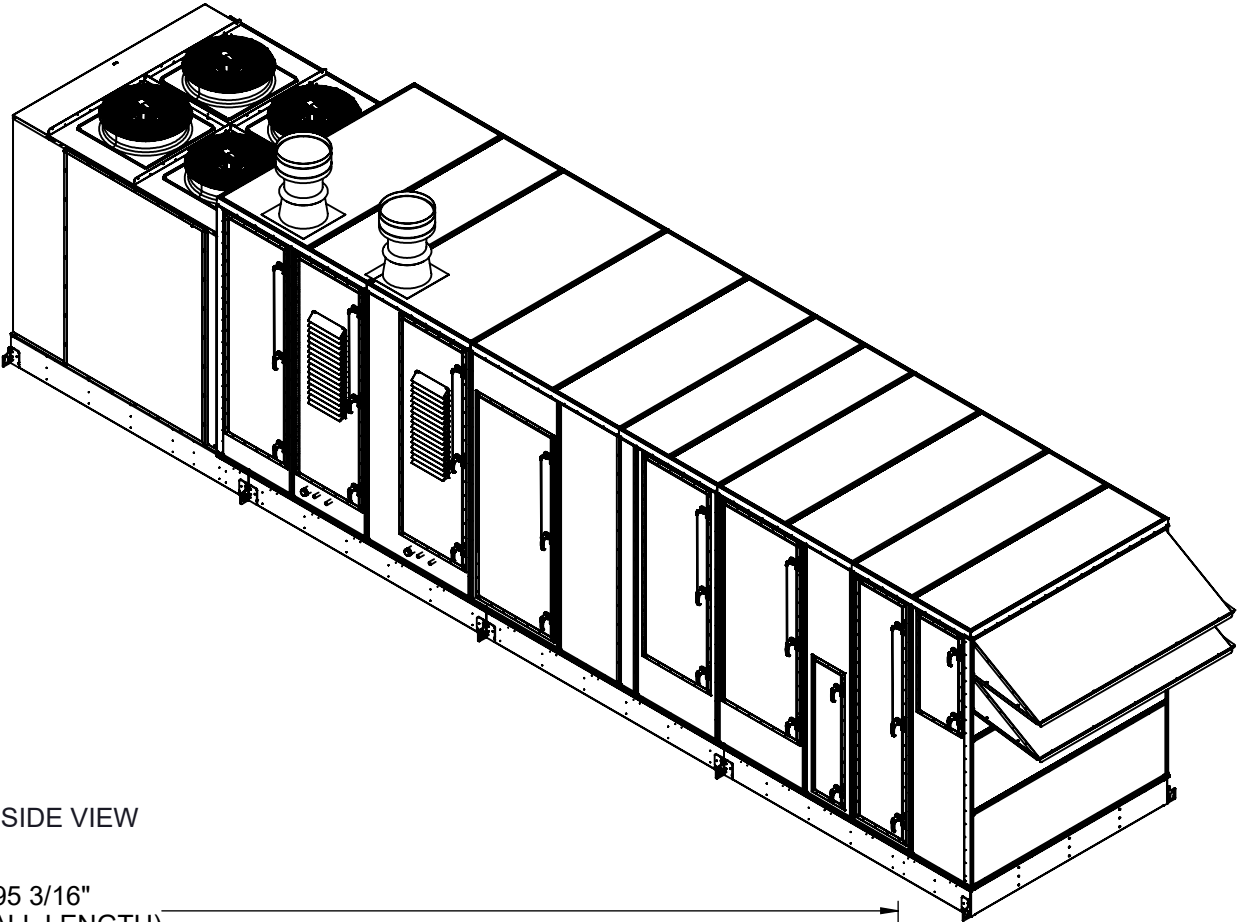
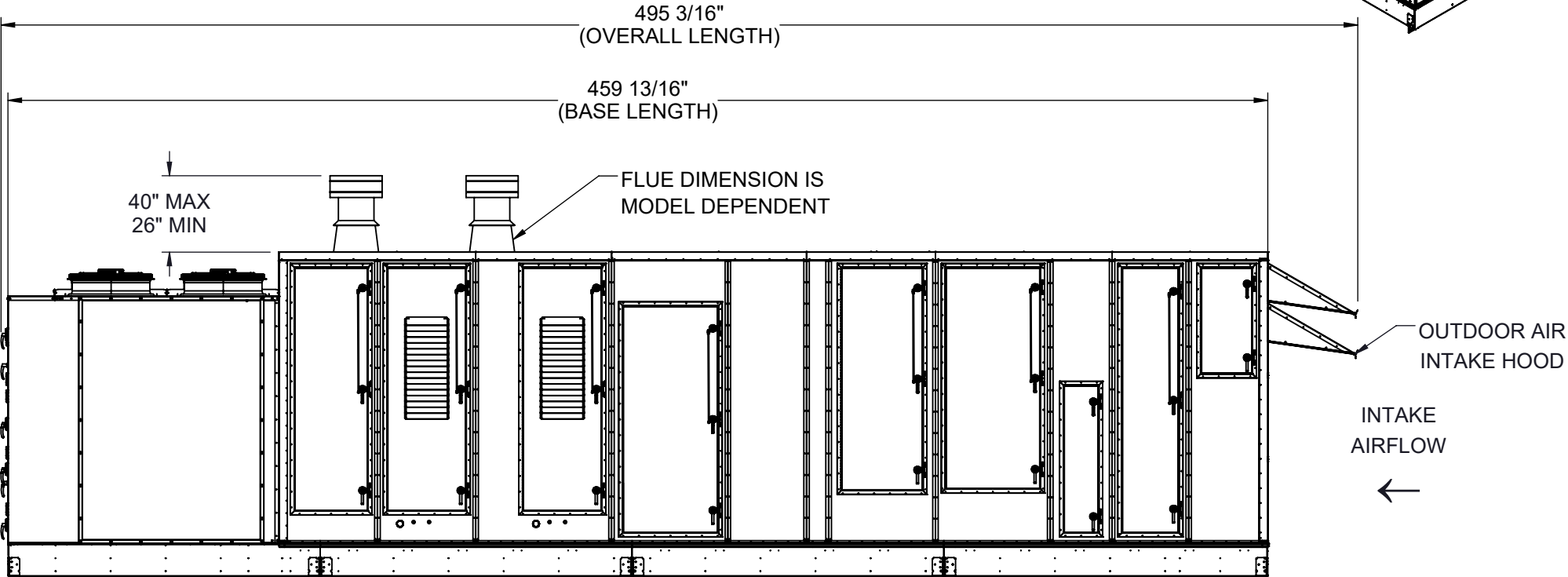
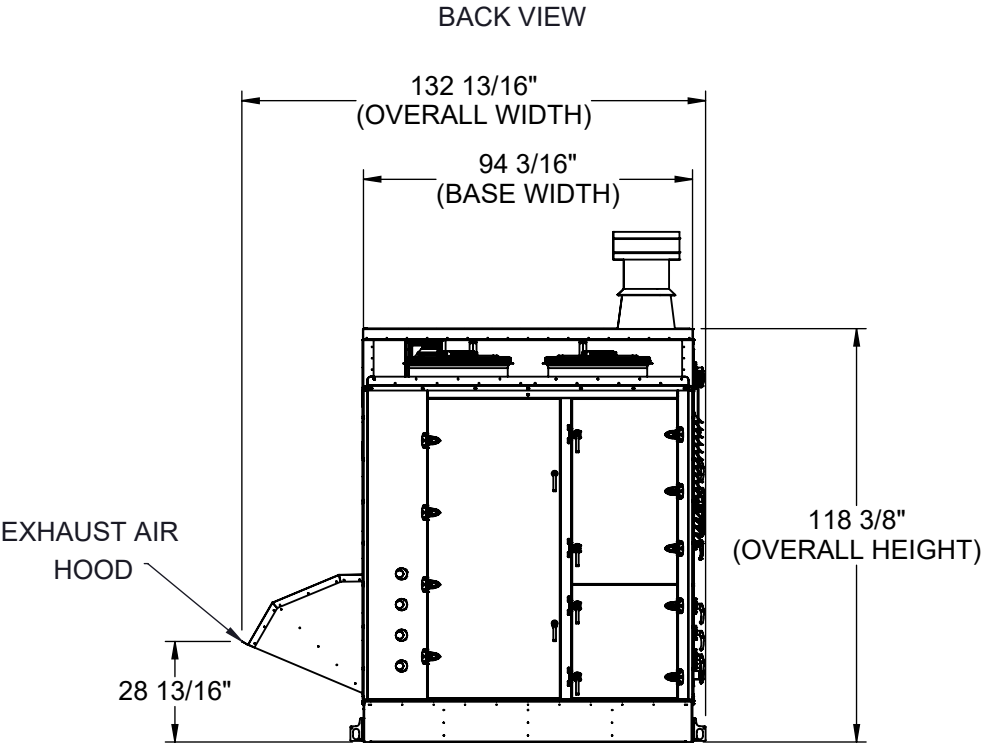


GENERAL NOTES FOR APPLICABLE SHEETS:

LEFT HAND ACCESS SHOWN IN ALL VIEWS
RIGHT HAND ACCESS OPTIONS LOCATED WITH SAME DIMENSIONS ON OPPOSITE SIDE UNLESS OTHERWISE SPECIFIED
WEIGHTS SHOWN REFLECT FULLY OPTIONED ESTIMATED UNIT WEIGHT



LEFT SIDE VIEW



UNIT SIZE	ESTIMATED WEIGHT (lbs.)
45-50 TONS	18000

Desert Aire has a policy of continuous product and quality improvement. Specifications and dimensions are subject to change without notice. This drawing and information contained herein are the exclusive property of the Desert Aire Corporation. Any use detrimental to the interests of Desert Aire is prohibited.

ALL DIMENSIONS ARE IN INCHES
TOLERANCE $\pm 1/8"$

All Dimensions in Inches
All Angles 90°
All outside corners 0.125" fillet
Unless Otherwise Specified



Third Angle Projection

Part weight

Tolerance Unless Otherwise Specified
X.X $\pm .125$
X.XX $\pm .060$
X.XXX $\pm .030$
Angles $\pm 1^\circ$

Drawn **ASV** Date Released **1/19/2018**

Sheet **1/9**

Scale **NTS**



N120 W18485 FREISTADT RD
GERMANTOWN, WI 53022
Tel: (262) 946-7400
Fax: (262) 946-7401

Description **SP 40-50 TON PKG DUAL GAS HEAT**

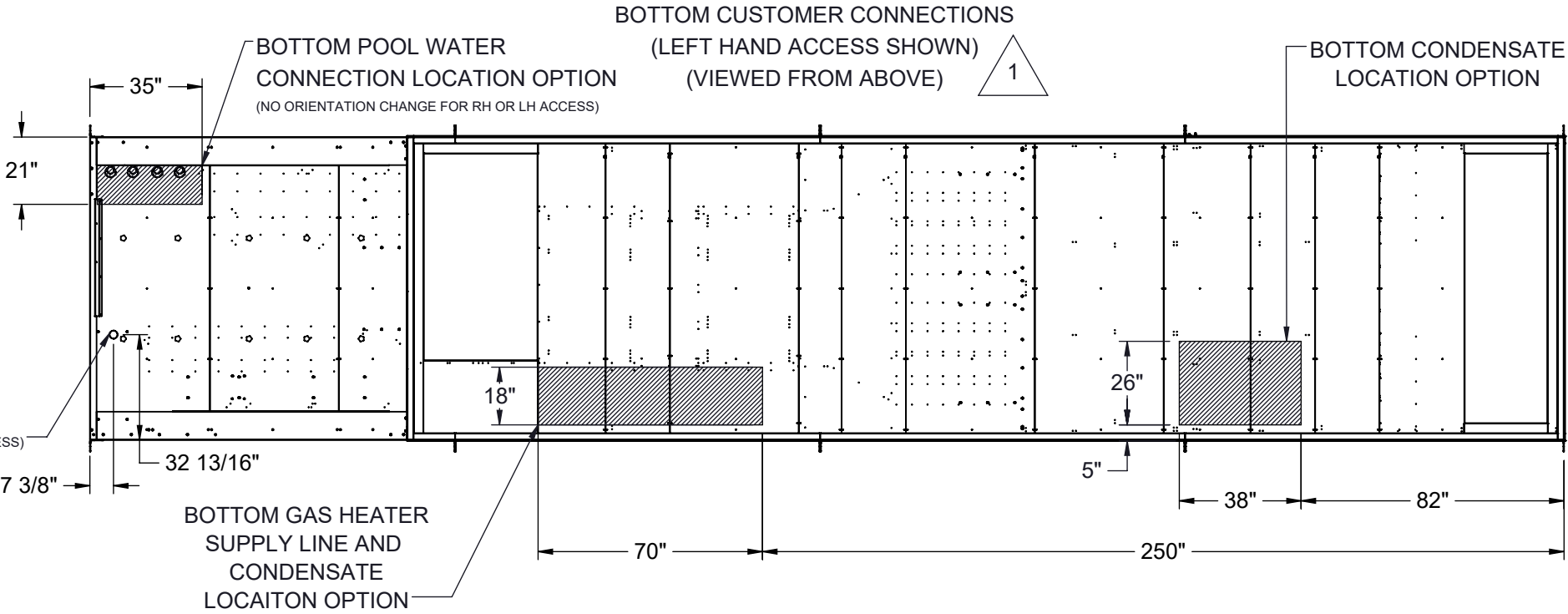
Page Title **GENERAL ARRANGEMENT**

Drawing Number **G1000-116**

Rev. **1**

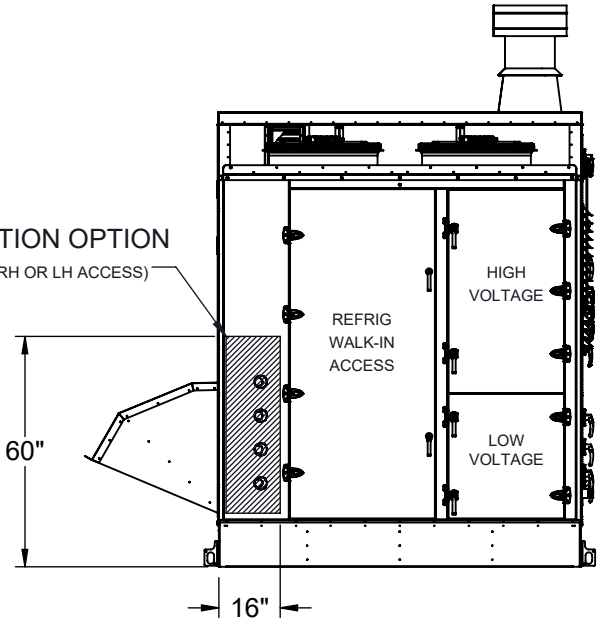
CUSTOMER CONNECTION LINE SIZE (in.)		
UNIT SIZE	45 TONS	50 TONS
POOL WATER LINE CIRCUIT A (CPVC)	1	2
POOL WATER LINE CIRCUIT B (CPVC)	2	2
CONDENSATE (PVC)	1 1/2	1 1/2
GAS (MNPT)	2	2
GAS CONDENSATE (PVC)	1	1

BOTTOM ELECTRICAL
LOCATION OPTION
(NO ORIENTATION CHANGE FOR RH OR LH ACCESS)



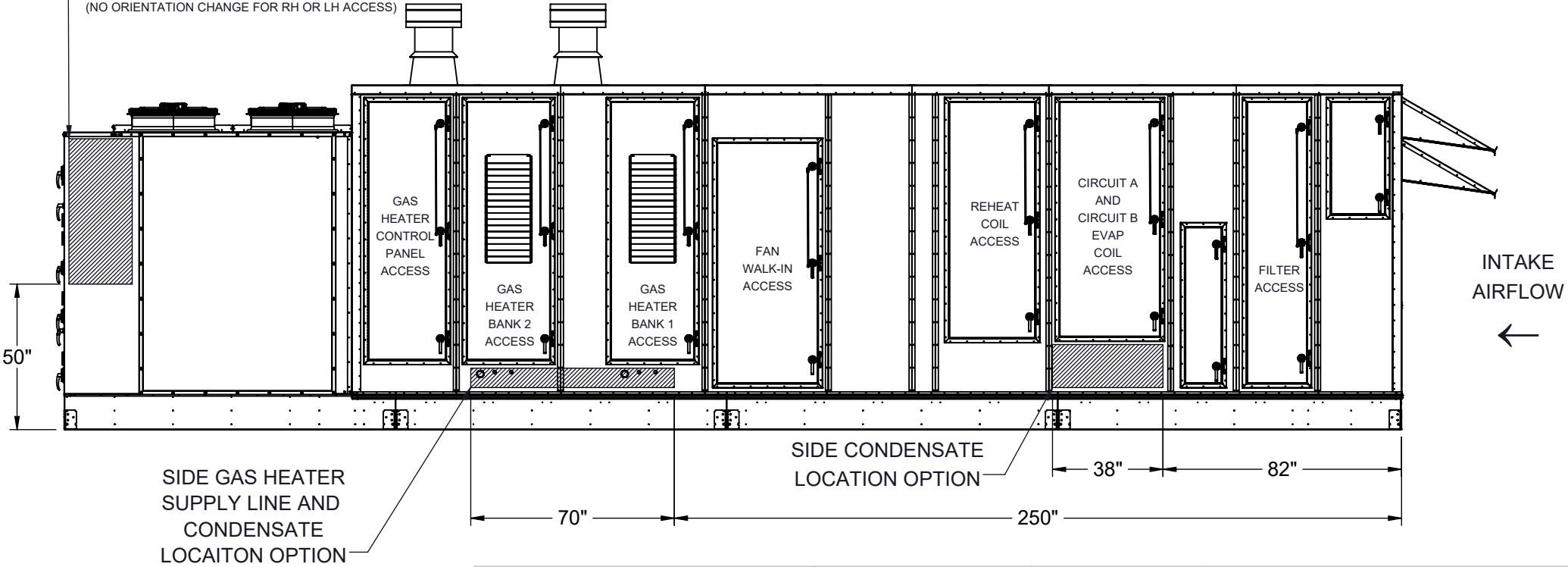
BACK CONNECTIONS VIEW
(NO ORIENTATION CHANGE FOR RH OR LH ACCESS)

BACK POOL WATER
CONNECTION LOCATION OPTION
(NO ORIENTATION CHANGE FOR RH OR LH ACCESS)



LEFT SIDE CONNECTION VIEW
(LEFT HAND ACCESS SHOWN)

SIDE ELECTRICAL
CONNECTION LOCATION OPTION
(NO ORIENTATION CHANGE FOR RH OR LH ACCESS)



SIDE GAS HEATER
SUPPLY LINE AND
CONDENSATE
LOCATION OPTION

SIDE CONDENSATE
LOCATION OPTION

NOTES:
REFER TO SHEET 1 FOR GENERAL NOTES
LEFT HAND ACCESS SHOWN IN ALL VIEWS
RIGHT HAND ACCESS OPTIONS LOCATED WITH SAME DIMENSIONS ON OPPOSITE SIDE UNLESS OTHERWISE SPECIFIED

FILTER INFORMATION						
UNIT SIZE	OA QTY	OA SIZE	REPLACEMENT PART NUMBER	RA QTY	RA SIZE	REPLACEMENT PART NUMBER
45-50 TONS	10	18 X 24 X 4	870-056	10	18 X 24 X 4	870-056

Desert Aire has a policy of continuous product and quality improvement. Specifications and dimensions are subject to change without notice. This drawing and information contained herein are the exclusive property of the Desert Aire Corporation. Any use detrimental to the interests of Desert Aire is prohibited.

ALL DIMENSIONS ARE IN INCHES
TOLERANCE $\pm 1/8"$

All Dimensions in Inches
All Angles 90°
All outside corners 0.125" fillet
Unless Otherwise Specified

Third Angle Projection

Part weight

Tolerance Unless Otherwise Specified
X.X $\pm .125$
X.XX $\pm .060$
X.XXX $\pm .030$
Angles $\pm 1^\circ$

Drawn **ASV** Date Released **1/19/2018**

Sheet **2/9**

Scale **NTS** Rev. **1**

DESERT AIRE

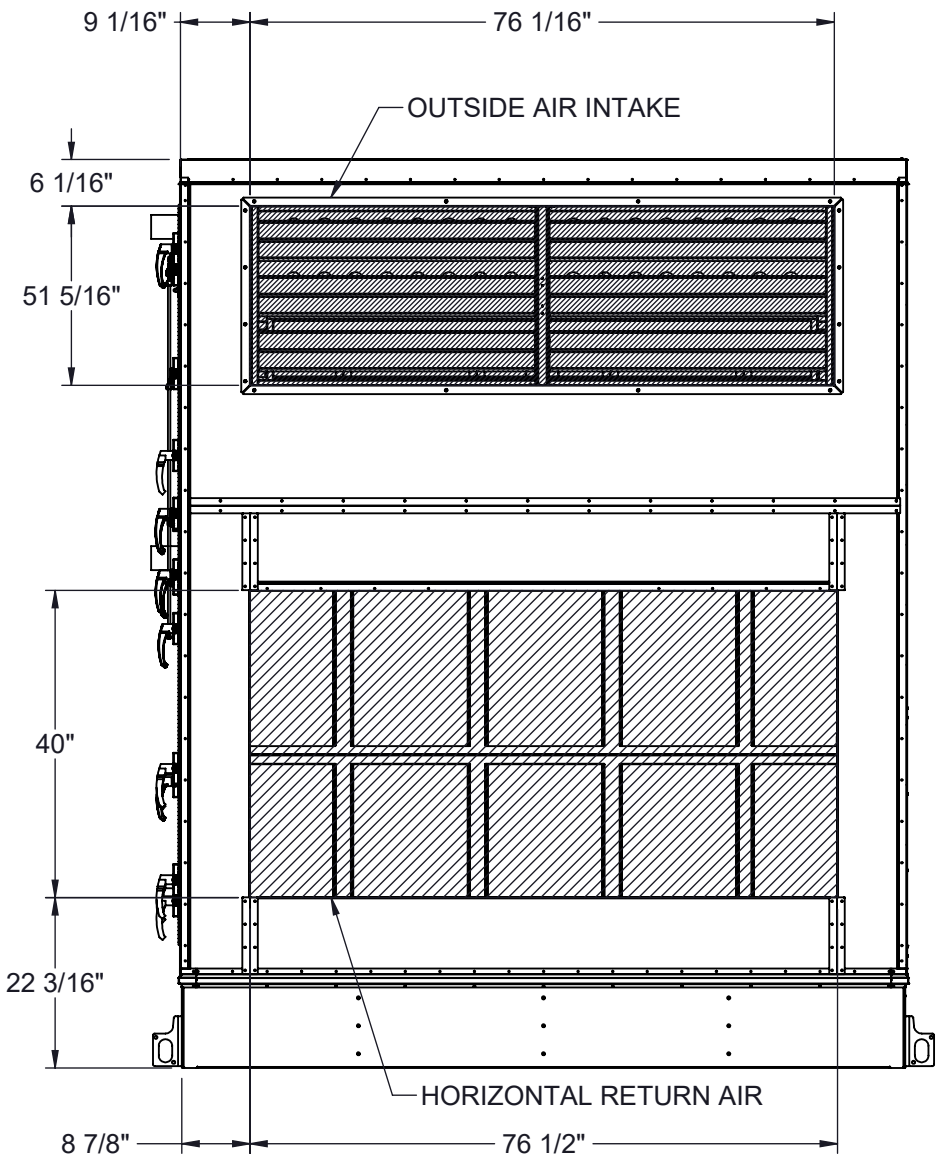
N120 W18485 FREISTADT RD
GERMANTOWN, WI 53022
Tel: (262) 946-7400
Fax: (262) 946-7401

Description **SP 40-50 TON PKG DUAL GAS HEAT**

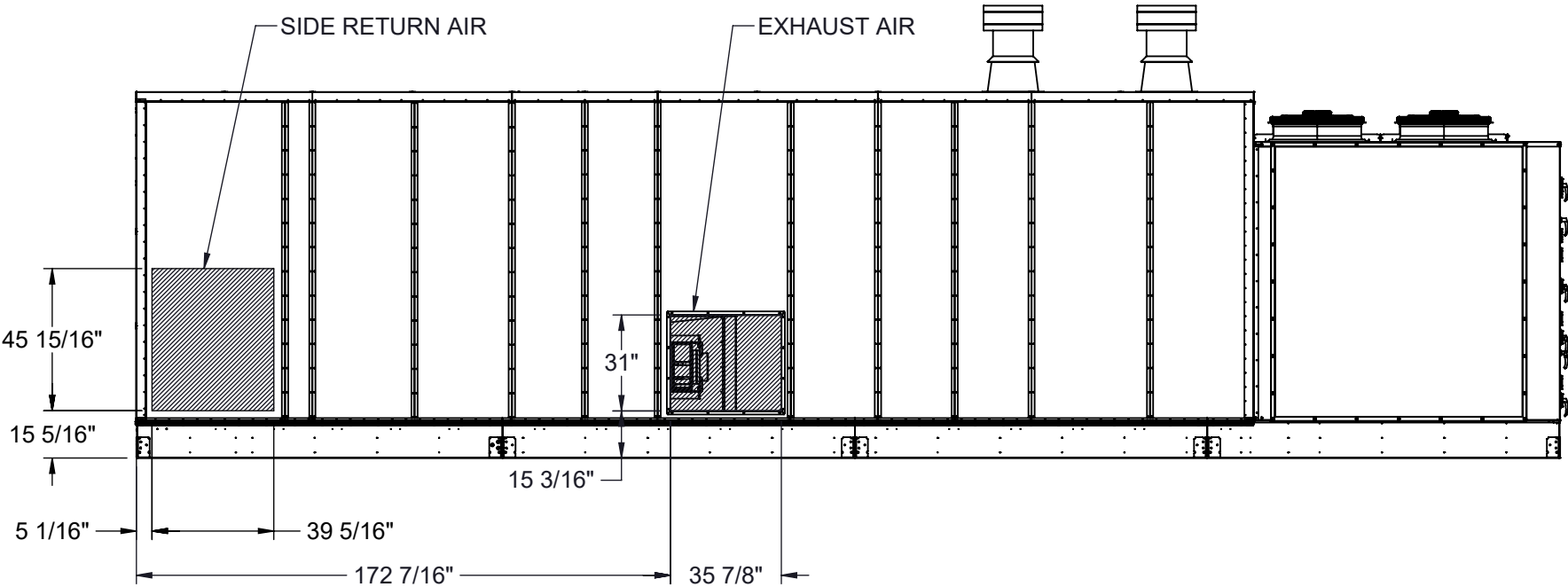
Page Title **CUSTOMER INTERFACE GA**

Drawing Number **G1000-116**

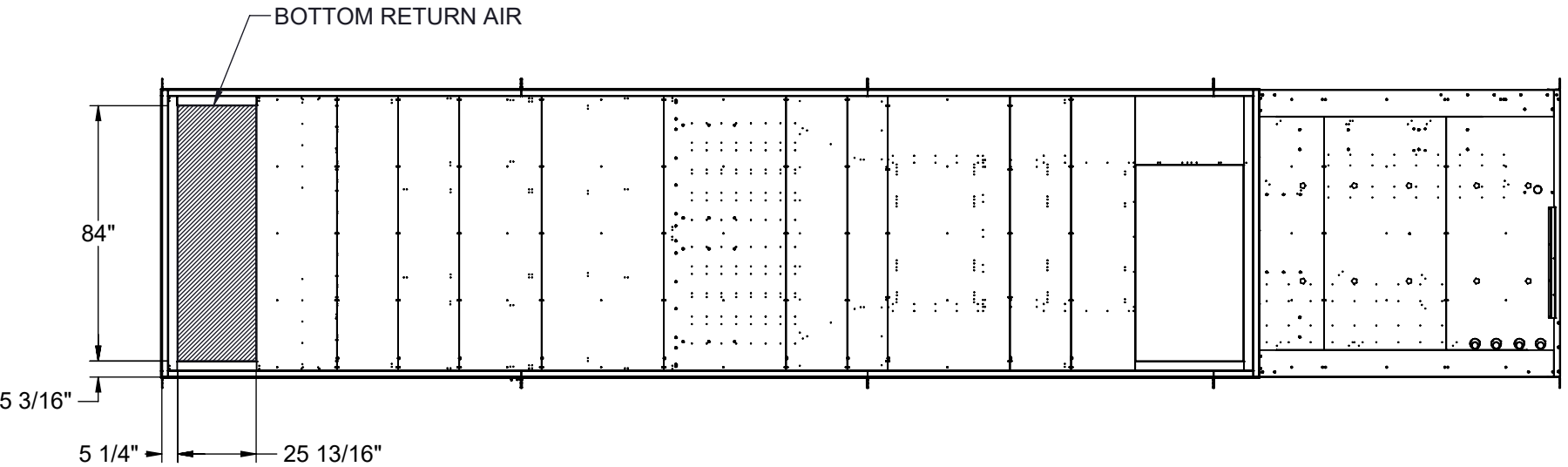
HORIZONTAL RETURN AIR OPTION
(INTAKE VIEW)



SIDE RETURN AIR OPTION
(SIDE VIEW)



BOTTOM RETURN AIR OPTION
(VIEW FROM ABOVE)



NOTES:
REFER TO SHEET 1 FOR GENERAL NOTES
HOODS REMOVED FOR CLARITY
ACCESS SIDE RETURN AIR OPTION WILL SHIFT FILTER SECTION DOORS TO NON-ACCESS SIDE
OUTSIDE AIR INTAKE LOCATED IN THE SAME POSITION REGARDLESS OF OPTIONS

Desert Aire has a policy of continuous product and quality improvement. Specifications and dimensions are subject to change without notice. This drawing and information contained herein are the exclusive property of the Desert Aire Corporation. Any use detrimental to the interests of Desert Aire is prohibited.

ALL DIMENSIONS ARE IN INCHES
TOLERANCE $\pm 1/8"$

All Dimensions in Inches
All Angles 90°
All outside corners 0.125" fillet
Unless Otherwise Specified



Third Angle Projection

Part weight

Tolerance Unless
Otherwise Specified
X.X $\pm .125$
X.XX $\pm .060$
X.XXX $\pm .030$
Angles $\pm 1^\circ$

Drawn
ASV
Date Released
1/19/2018

Sheet
3/9

Scale
NTS



N120 W18485 FREISTADT RD
GERMANTOWN, WI 53022
Tel: (262) 946-7400
Fax: (262) 946-7401

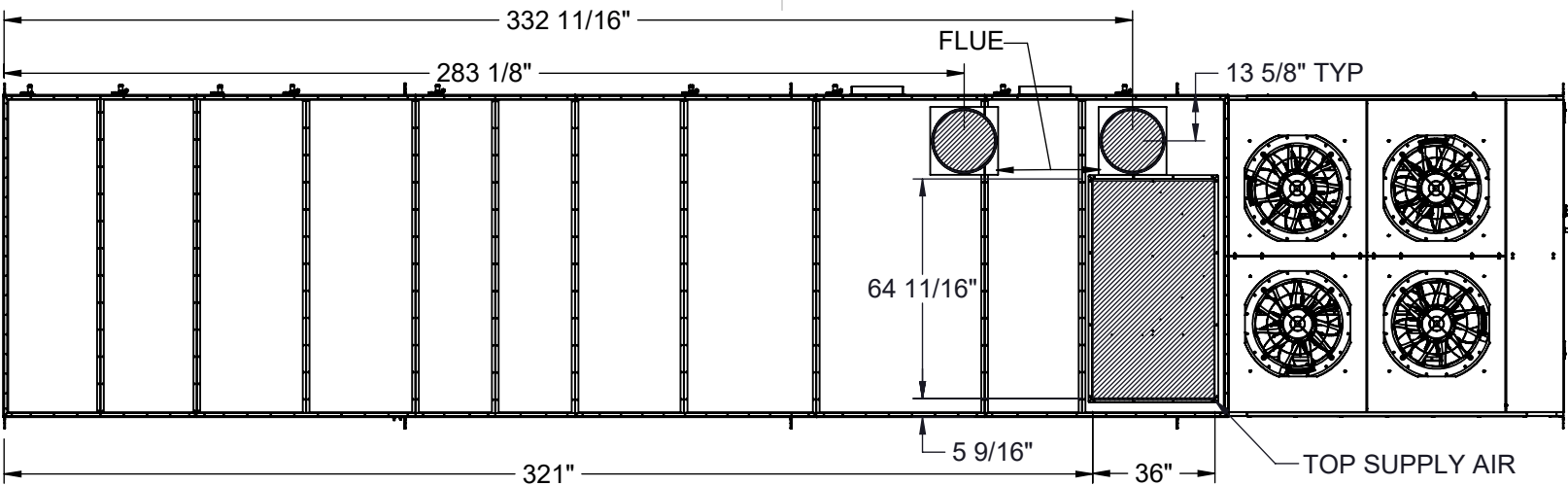
Description
SP 40-50 TON PKG DUAL GAS HEAT

Page Title
INTAKE OPTIONS GA

Drawing Number
G1000-116

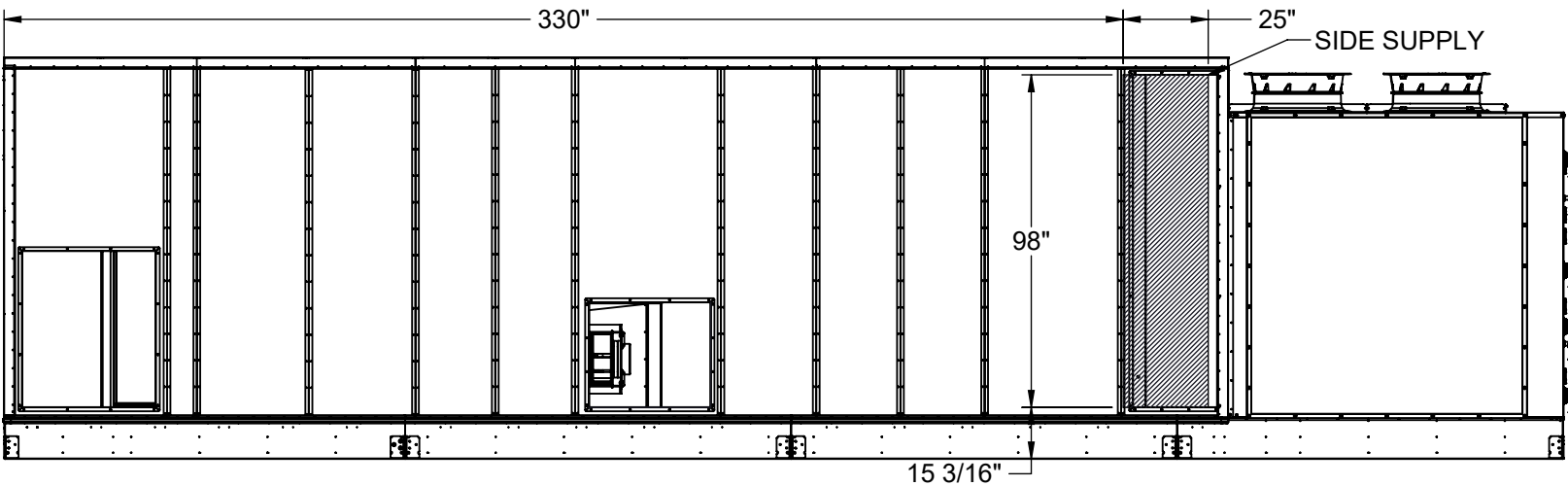
TOP SUPPLY OPTION
LEFT HAND ACCESS OPTION ONLY
REFER TO PAGE 5 FOR RIGHT HAND ACCESS
(TOP VIEW)

INTAKE



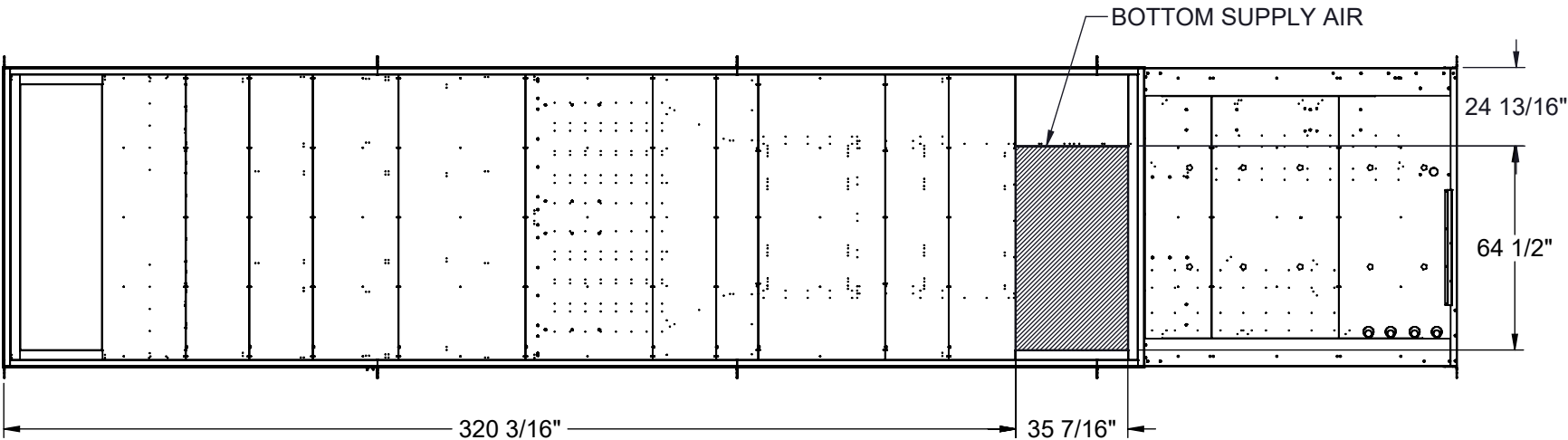
SIDE SUPPLY OPTION
LEFT HAND ACCESS OPTION ONLY
REFER TO PAGE 5 FOR RIGHT HAND ACCESS
(RIGHT SIDE VIEW)

INTAKE



BOTTOM SUPPLY OPTION
LEFT HAND ACCESS OPTION ONLY
REFER TO PAGE 5 FOR RIGHT HAND ACCESS
(VIEW FROM ABOVE)

INTAKE



NOTES:
REFER TO SHEET 1 FOR GENERAL NOTES
LEFT HAND ACCESS SHOWN IN ALL VIEWS UNLESS OTHERWISE SPECIFIED
RIGHT HAND ACCESS OPTIONS LOCATED WITH SAME DIMENSIONS ON OPPOSITE SIDE UNLESS OTHERWISE SPECIFIED
HOODS REMOVED FOR CLARITY

Desert Aire has a policy of continuous product and quality improvement. Specifications and dimensions are subject to change without notice. This drawing and information contained herein are the exclusive property of the Desert Aire Corporation. Any use detrimental to the interests of Desert Aire is prohibited.

ALL DIMENSIONS ARE IN INCHES
TOLERANCE $\pm 1/8"$

All Dimensions in Inches
All Angles 90°
All outside corners 0.125" fillet
Unless Otherwise Specified



Third Angle Projection

Part weight

Tolerance Unless
Otherwise Specified
X.X $\pm .125$
X.XX $\pm .060$
X.XXX $\pm .030$
Angles $\pm 1^\circ$

Drawn
ASV
Date Released
1/19/2018

Sheet
4/9

Scale
NTS



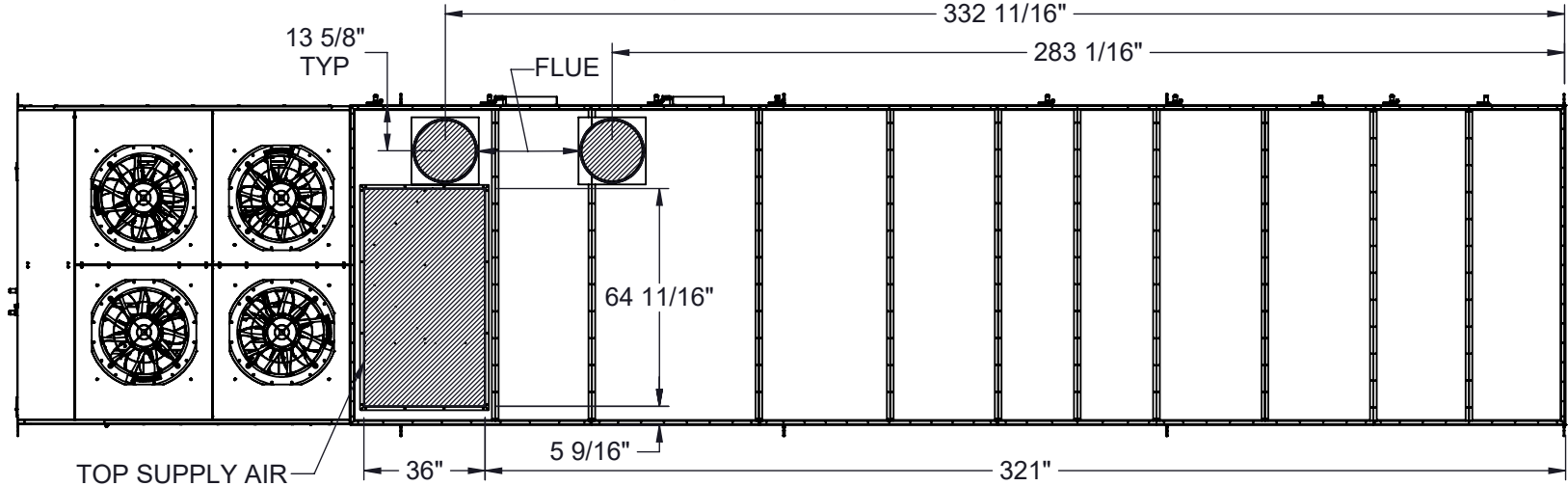
N120 W18485 FREISTADT RD
GERMANTOWN, WI 53022
Tel: (262) 946-7400
Fax: (262) 946-7401

Description
SP 40-50 TON PKG DUAL GAS HEAT

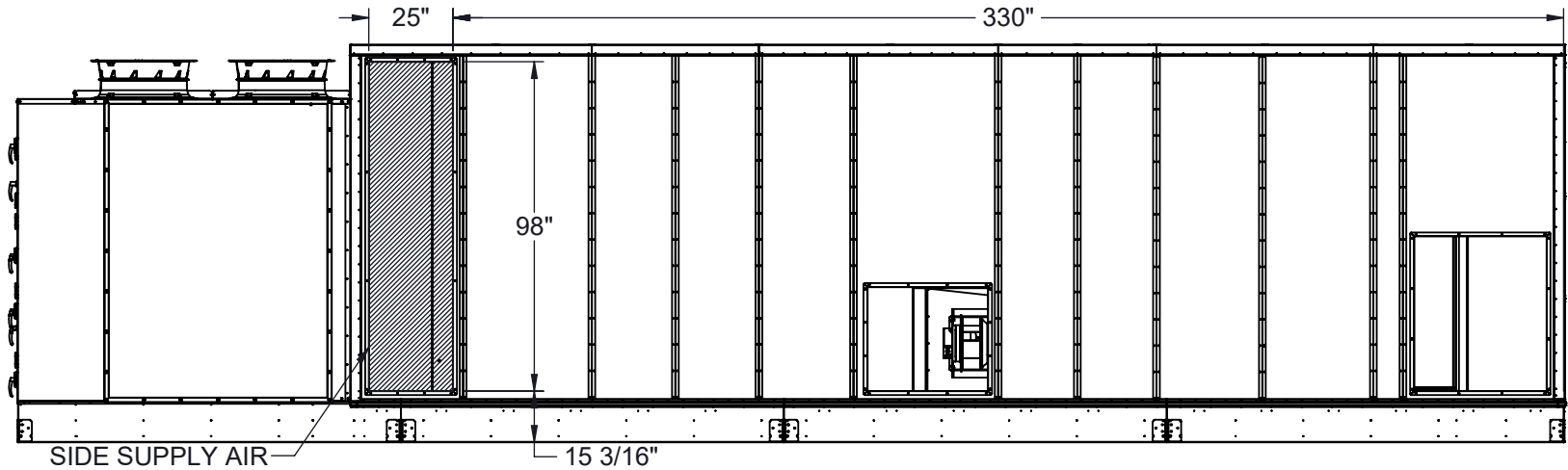
Page Title
LH ACCESS DISCHARGE OPTIONS GA

Drawing Number
G1000-116

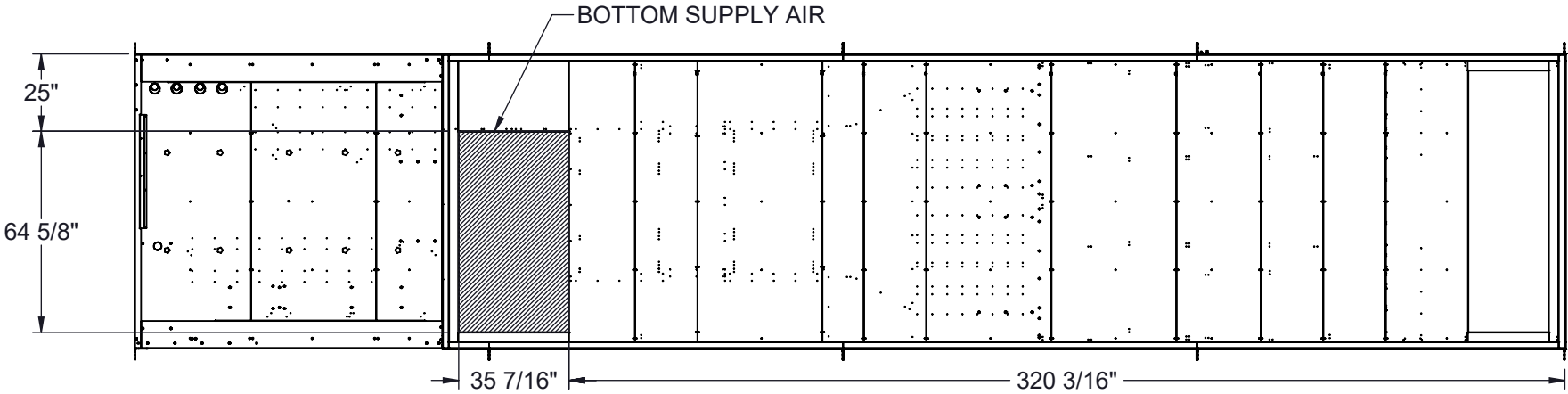
TOP SUPPLY OPTION
RIGHT HAND ACCESS OPTION ONLY
REFER TO PAGE 4 FOR LEFT HAND ACCESS
(TOP VIEW)



SIDE SUPPLY OPTION
RIGHT HAND ACCESS OPTION ONLY
REFER TO PAGE 4 FOR LEFT HAND ACCESS
(LEFT SIDE VIEW)



BOTTOM SUPPLY OPTION
RIGHT HAND ACCESS OPTION ONLY
REFER TO PAGE 4 FOR LEFT HAND ACCESS
(VIEW FROM ABOVE)



NOTES:
REFER TO SHEET 1 FOR GENERAL NOTES
LEFT HAND ACCESS SHOWN IN ALL VIEWS UNLESS OTHERWISE SPECIFIED
RIGHT HAND ACCESS OPTIONS LOCATED WITH SAME DIMENSIONS ON OPPOSITE SIDE UNLESS OTHERWISE SPECIFIED
HOODS REMOVED FOR CLARITY

Desert Aire has a policy of continuous product and quality improvement. Specifications and dimensions are subject to change without notice. This drawing and information contained herein are the exclusive property of the Desert Aire Corporation. Any use detrimental to the interests of Desert Aire is prohibited.

ALL DIMENSIONS ARE IN INCHES
TOLERANCE $\pm 1/8"$

All Dimensions in Inches
All Angles 90°
All outside corners 0.125" fillet
Unless Otherwise Specified

Third Angle Projection

Part weight

Tolerance Unless Otherwise Specified
X.X $\pm .125$
X.XX $\pm .060$
X.XXX $\pm .030$
Angles $\pm 1^\circ$

Drawn ASV Date Released 1/19/2018

Sheet 5/9

Scale NTS Rev. 1

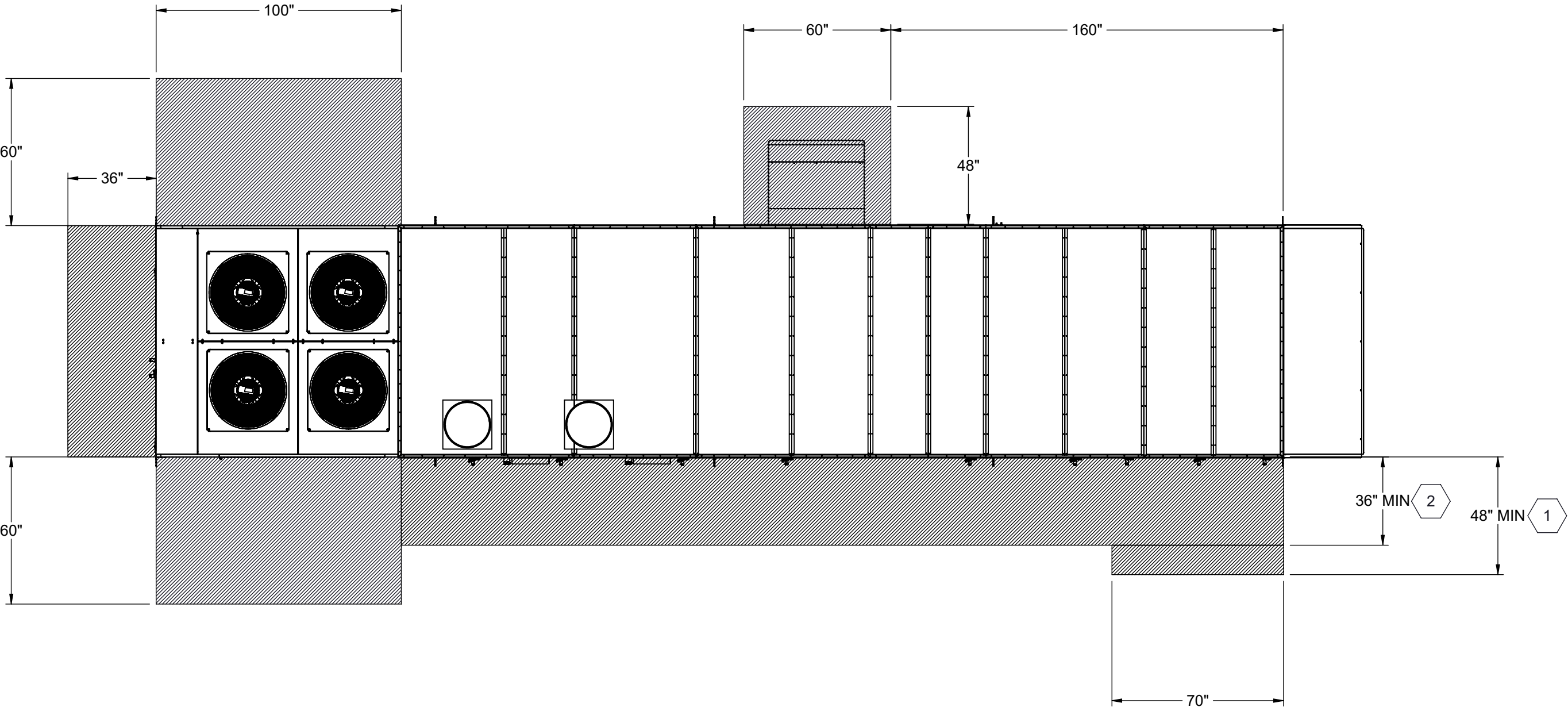


N120 W18485 FREISTADT RD
GERMANTOWN, WI 53022
Tel: (262) 946-7400
Fax: (262) 946-7401

Description SP 40-50 TON PKG DUAL GAS HEAT

Page Title RH ACCESS DISCHARGE OPTIONS GA


Drawing Number G1000-116



1 96" RECOMMENDED FOR FILTER ACCESS.

2 120" CLEARANCE ON ACCESS SIDE RECOMMENDED FOR FAN AND COIL SERVICE

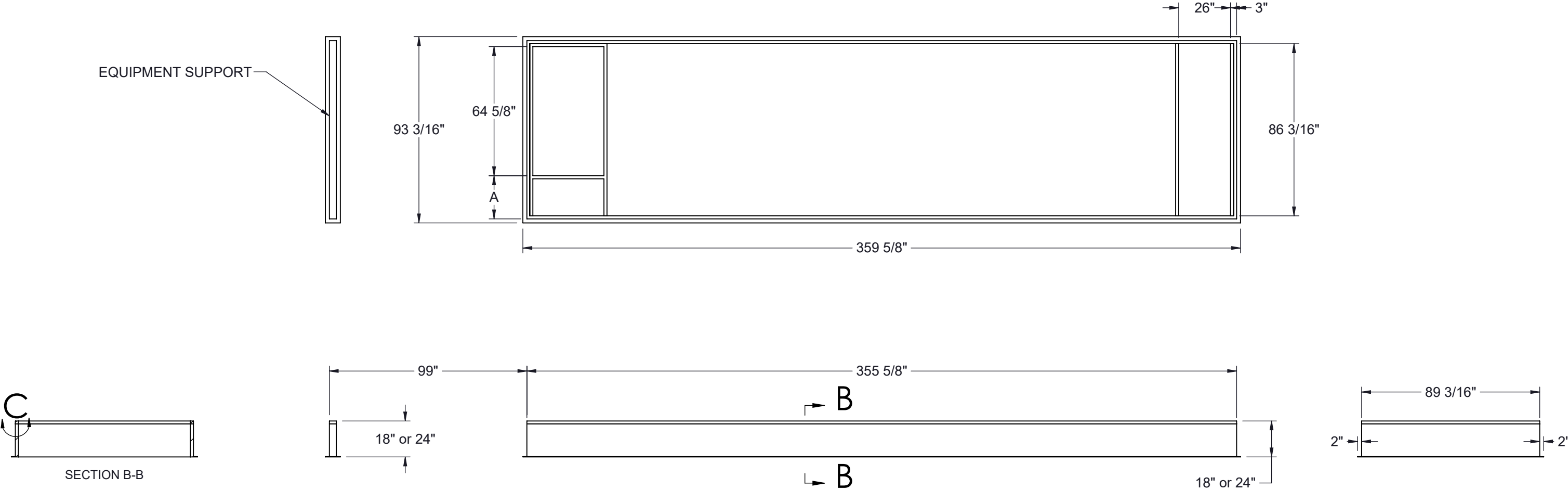
NOTES:
REFER TO SHEET 1 FOR GENERAL NOTES
LEFT HAND ACCESS SHOWN IN ALL VIEWS
RIGHT HAND ACCESS OPTIONS LOCATED WITH SAME DIMENSIONS ON OPPOSITE SIDE UNLESS OTHERWISE SPECIFIED

Desert Aire has a policy of continuous product and quality improvement. Specifications and dimensions are subject to change without notice. This drawing and information contained herein are the exclusive property of the Desert Aire Corporation. Any use detrimental to the interests of Desert Aire is prohibited.		All Dimensions in Inches All Angles 90° All outside corners 0.125" fillet Unless Otherwise Specified		Tolerance Unless Otherwise Specified X.X ±.125 X.XX ±.060 X.XXX ±.030 Angles ±1°		 N120 W18485 FREISTADT RD GERMANTOWN, WI 53022 Tel: (262) 946-7400 Fax: (262) 946-7401	
ALL DIMENSIONS ARE IN INCHES TOLERANCE ± 1/8"		Third Angle Projection		Drawn ASV	Date Released 1/19/2018	Description SP 40-50 TON PKG DUAL GAS HEAT	
Part weight				Sheet 6/9	Rev. 1	Page Title UNIT CLEARANCE GA	
				Scale NTS		Drawing Number G1000-116	

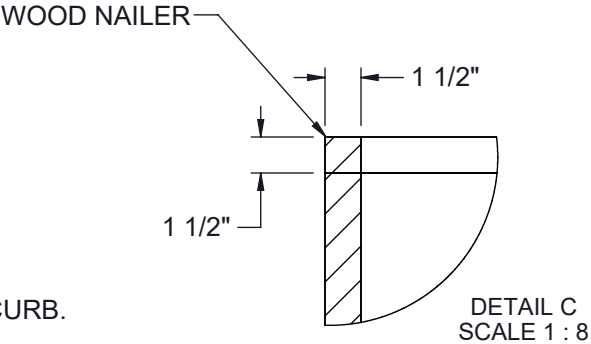
NOTES:
REFER TO SHEET 1 FOR GENERAL NOTES



- 1. 14 GA GALVANIZED STEEL CONSTRUCTION
- 2. PRIME PAINTED AFTER FABRICATION
- 3. PRESSURE TREATED WOOD NAILERS
- 4. 1-1/2" THICK 3LB/FT^3 FIBERGLASS PERIMETER INSULATION
- 5. INTERNAL ANGLE REINFORCEMENT
- 6. CURB TO BE SHIPPED KNOCKED DOWN

UNIT TON	ACCESS	18" CURB	24" CURB	A
40-50	RIGHT HAND	CB-50PGR4-18	CB-50PGR4-24	3
40-50	LEFT HAND	CB-80PGL4-18	CB-50PGL4-24	21 9/16



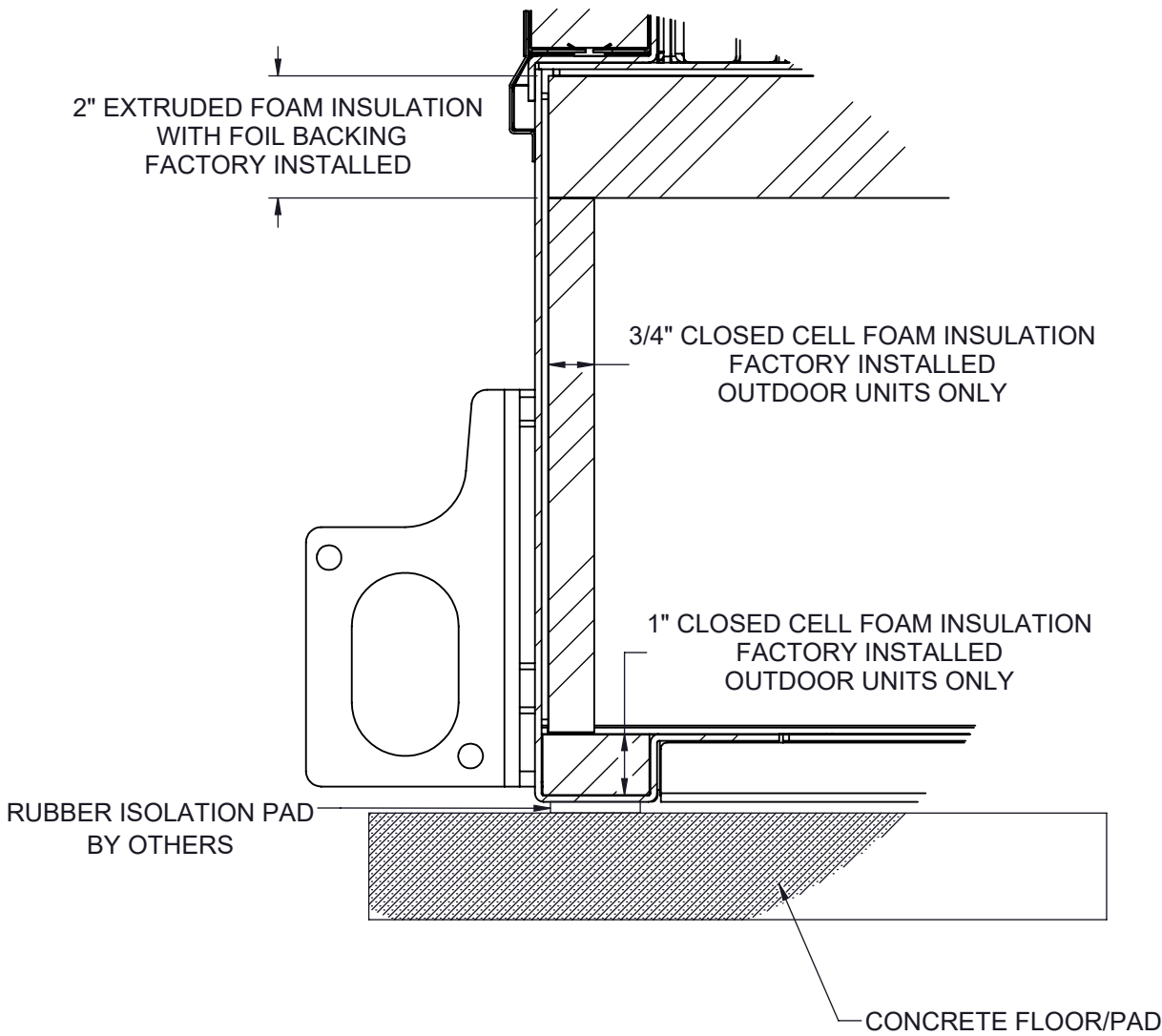
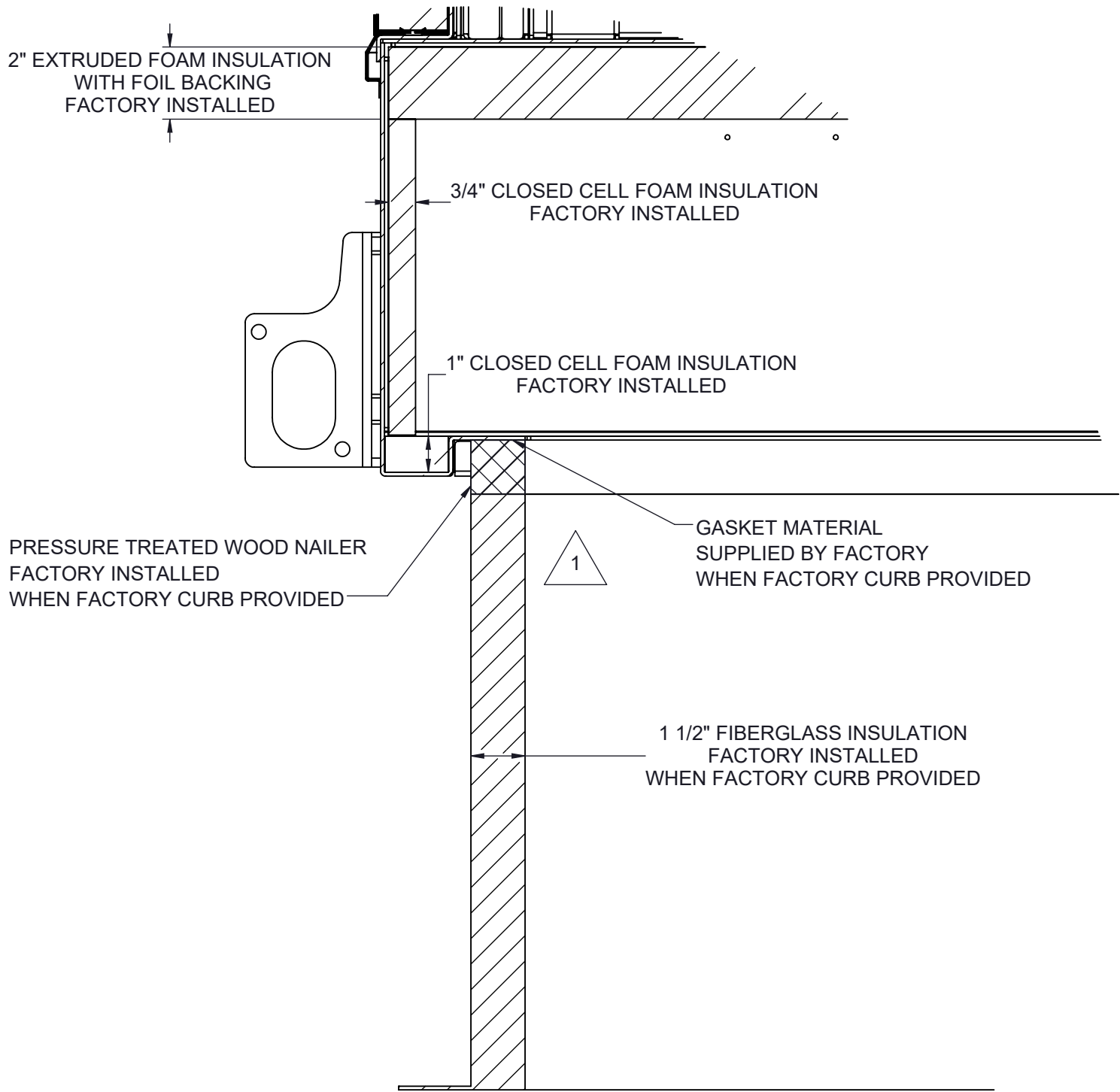
NUMBER AND LOCATION OF CROSS SUPPORTS IS DEPENDANT UPON THE GUAGE OF MATERIAL USED TO CONSTRUCT THE CURB, DUCT SUPPORT CONFIGURATION LENGTH OF CURB, AND WIDTH OF CURB. INSTALLATION INSTRUCTIONS INCLUDED WITH CURB SHIPMENT INDICATE THE REQUIRED POSITION FOR FIELD ASSEMBLED CURBS.



Desert Aire has a policy of continuous product and quality improvement. Specifications and dimensions are subject to change without notice. This drawing and information contained herein are the exclusive property of the Desert Aire Corporation. Any use detrimental to the interests of Desert Aire is prohibited.	All Dimensions in Inches All Angles 90° All outside corners 0.125" fillet Unless Otherwise Specified	Tolerance Unless Otherwise Specified		 <div>N120 W18485 FREISTADT RD GERMANTOWN, WI 53022 Tel: (262) 946-7400 Fax: (262) 946-7401</div>
		X.X ±.125 X.XX ±.060 X.XXX ±.030 Angles ±1°		
		Drawn ASV	Date Released 1/19/2018	Description SP 40-50 TON PKG DUAL GAS HEAT
	Third Angle Projection	Sheet 7/9	Page Title CURB DETAIL GA	
ALL DIMENSIONS ARE IN INCHES TOLERANCE ± 1/8"	Part weight	Scale NTS	Rev. 1	Drawing Number G1000-116

CURB MOUNT

PAD MOUNT



1 ALL EXPOSED METAL TO BE SPRAY FOAM INSULATION AFTER INSTALLATION

NOTES:
REFER TO SHEET 1 FOR GENERAL NOTES
SEE SHEET 6 NOTES FOR CURB SPECIFICATIONS

Desert Aire has a policy of continuous product and quality improvement. Specifications and dimensions are subject to change without notice. This drawing and information contained herein are the exclusive property of the Desert Aire Corporation. Any use detrimental to the interests of Desert Aire is prohibited.

ALL DIMENSIONS ARE IN INCHES
TOLERANCE $\pm 1/8"$

All Dimensions in Inches
All Angles 90°
All outside corners 0.125" fillet
Unless Otherwise Specified



Third Angle Projection

Part weight

Tolerance Unless
Otherwise Specified
X.X $\pm .125$
X.XX $\pm .060$
X.XXX $\pm .030$
Angles $\pm 1^\circ$

Drawn
ASV
Date Released
1/19/2018

Sheet
8/9

Scale
NTS



N120 W18485 FREISTADT RD
GERMANTOWN, WI 53022
Tel: (262) 946-7400
Fax: (262) 946-7401

Description
SP 40-50 TON PKG DUAL GAS HEAT

Page Title
MOUNTING DETAILS GA

Drawing Number
G1000-116

G1000-116

SHIP LOOSE ITEMS

FLUE

DA PART NO	DESCRIPTION	QTY
515-059	B-VENT 12" X 36"	2
515-058	FLASHING 12"	2
525-057	VENT CAP 12"	2
515-056	COLLAR 12"	2

SHIP LOOSE ITEMS

EXHAUST HOOD

DA PART NO	DESCRIPTION	QTY
HOOD	EXHAUST ASSEMBLY	1
807-023	SCREW #8-18X1/2 SS	36
990-105	CAULK WHITE	1

114"

118 3/16"

232 1/16"

OUTDOOR AIR INTAKE HOOD

LUG DETAIL

Desert Aire has a policy of continuous product and quality improvement. Specifications and dimensions are subject to change without notice. This drawing and information contained herein are the exclusive property of the Desert Aire Corporation. Any use detrimental to the interests of Desert Aire is prohibited.

ALL DIMENSIONS ARE IN INCHES
TOLERANCE ± 1/8"

All Dimensions in Inches
All Angles 90°
All outside corners 0.125" fillet
Unless Otherwise Specified

Third Angle Projection

Part weight

Tolerance Unless Otherwise Specified	
X.X	±.125
X.XX	±.060
X.XXX	±.030
Angles	±1°

Drawn
ASV

Date Released
1/19/2018

Sheet
9/9

Scale
NTS

N120 W18485 FREISTADT RD
GERMANTOWN, WI 53022
Tel: (262) 946-7400
Fax: (262) 946-7401

Description
SP 40-50 TON PKG DUAL GAS HEAT

Page Title
SHIPPING/LIFTING DETAILS GA

Drawing Number
G1000-116

NOTES:

REFER TO SHEET 1 FOR GENERAL NOTES AND HOOD DETAILS