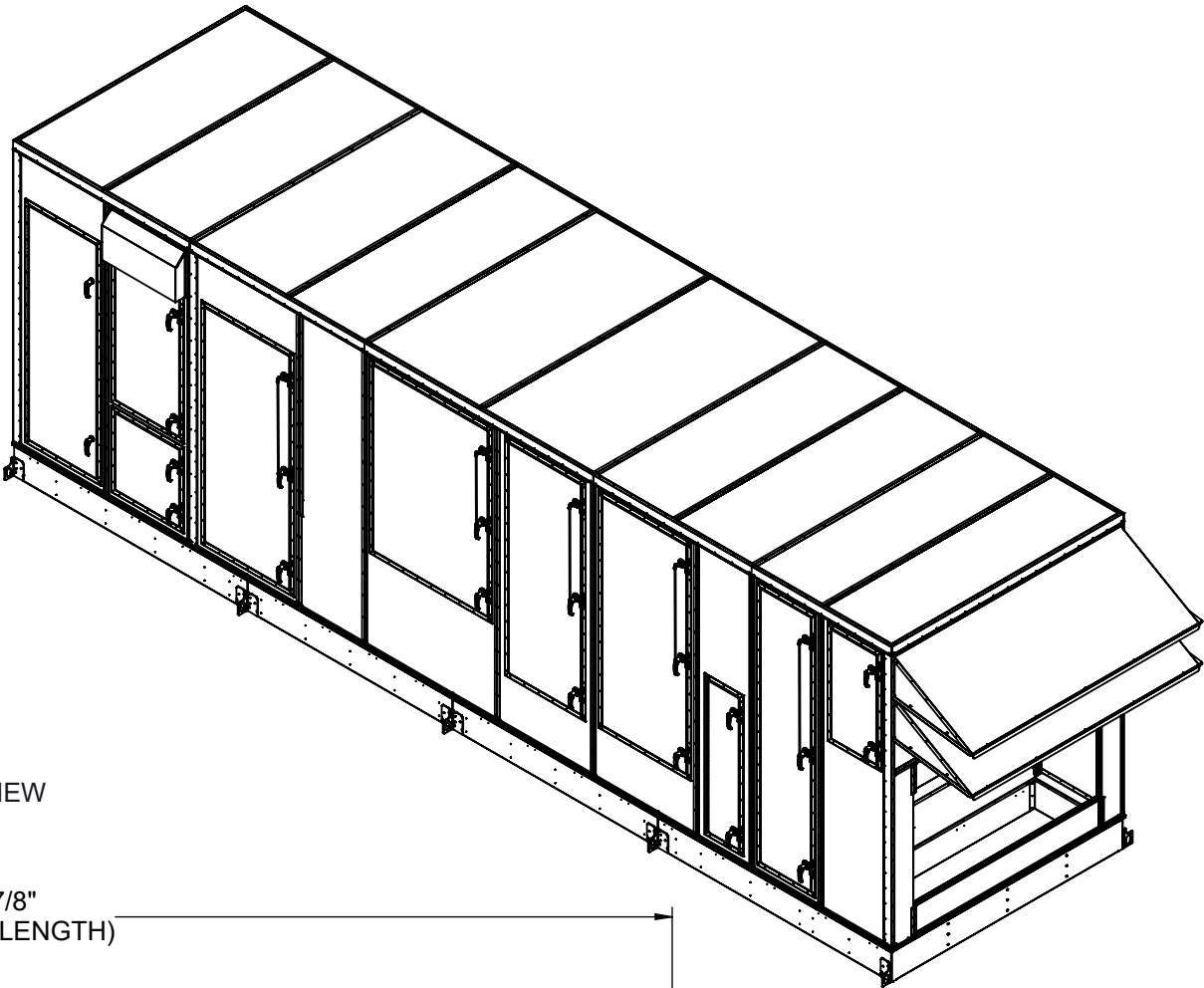
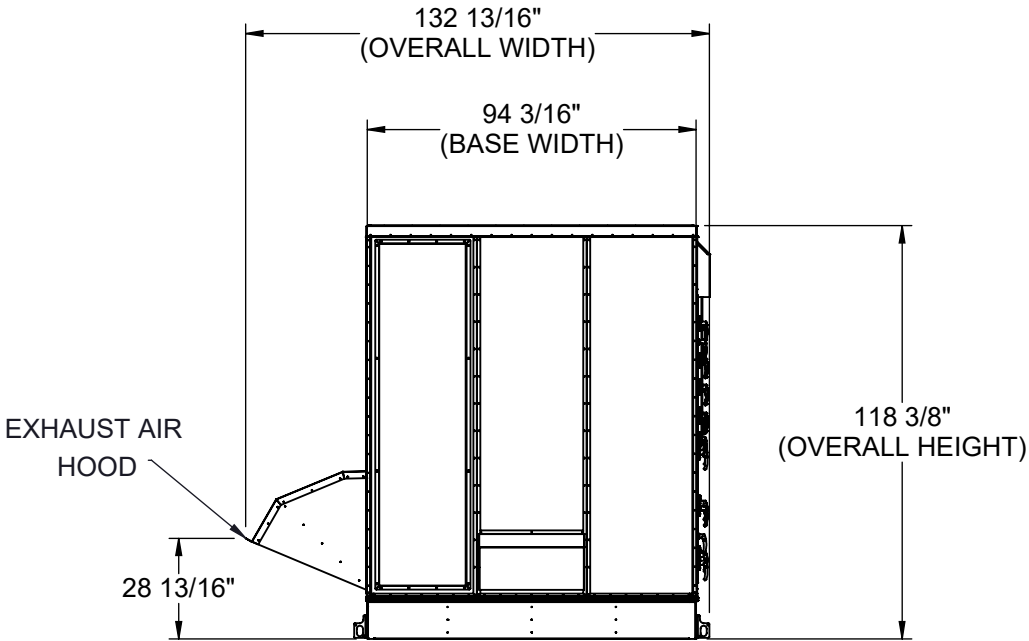


GENERAL NOTES FOR APPLICABLE SHEETS:

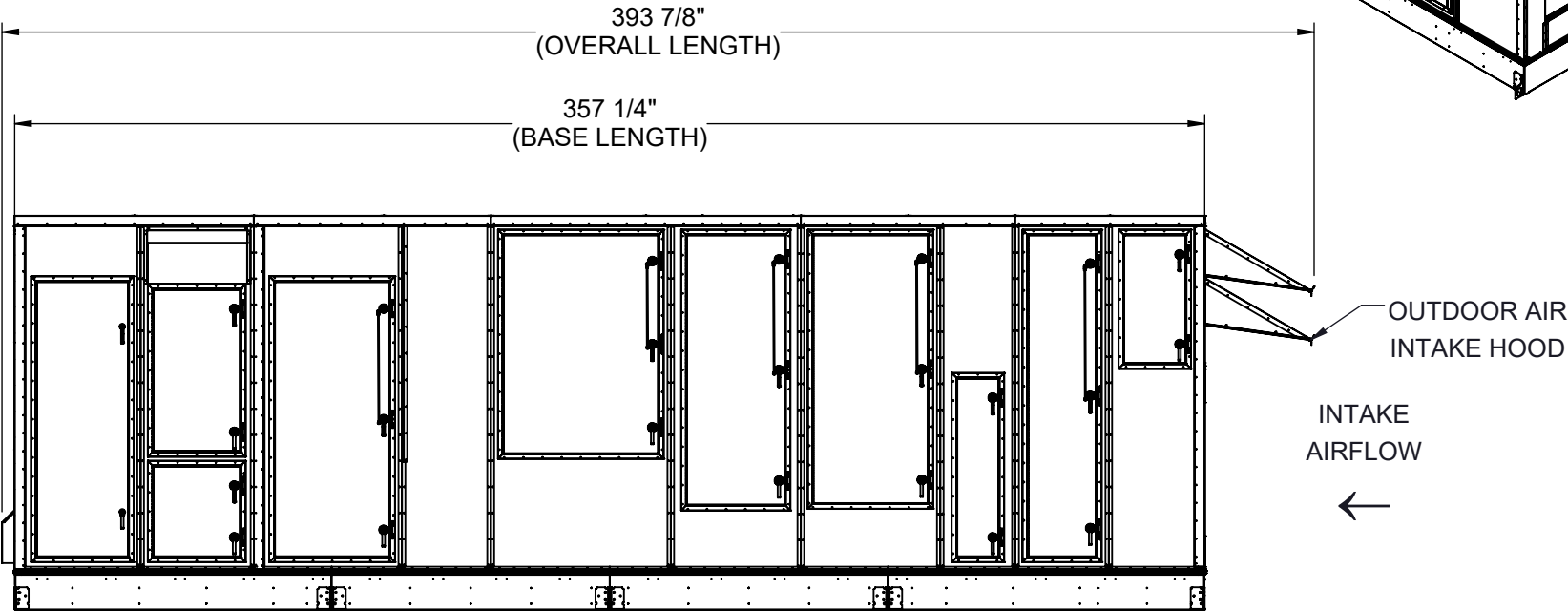
LEFT HAND ACCESS SHOWN IN ALL VIEWS  
RIGHT HAND ACCESS OPTIONS LOCATED WITH SAME DIMENSIONS ON OPPOSITE SIDE UNLESS OTHERWISE SPECIFIED  
WEIGHTS SHOWN REFLECT FULLY OPTIONED ESTIMATED UNIT WEIGHT



BACK VIEW



LEFT SIDE VIEW



UNIT SIZE	ESTIMATED WEIGHT (lbs.)
45-50 TONS	16000

Desert Aire has a policy of continuous product and quality improvement. Specifications and dimensions are subject to change without notice. This drawing and information contained herein are the exclusive property of the Desert Aire Corporation. Any use detrimental to the interests of Desert Aire is prohibited.

ALL DIMENSIONS ARE IN INCHES  
TOLERANCE  $\pm 1/8"$

All Dimensions in Inches  
All Angles 90°  
All outside corners 0.125" fillet  
Unless Otherwise Specified

Third Angle Projection

Part weight

Tolerance Unless Otherwise Specified	
X.X	$\pm .125$
X.XX	$\pm .060$
X.XXX	$\pm .030$
Angles	$\pm 1^\circ$

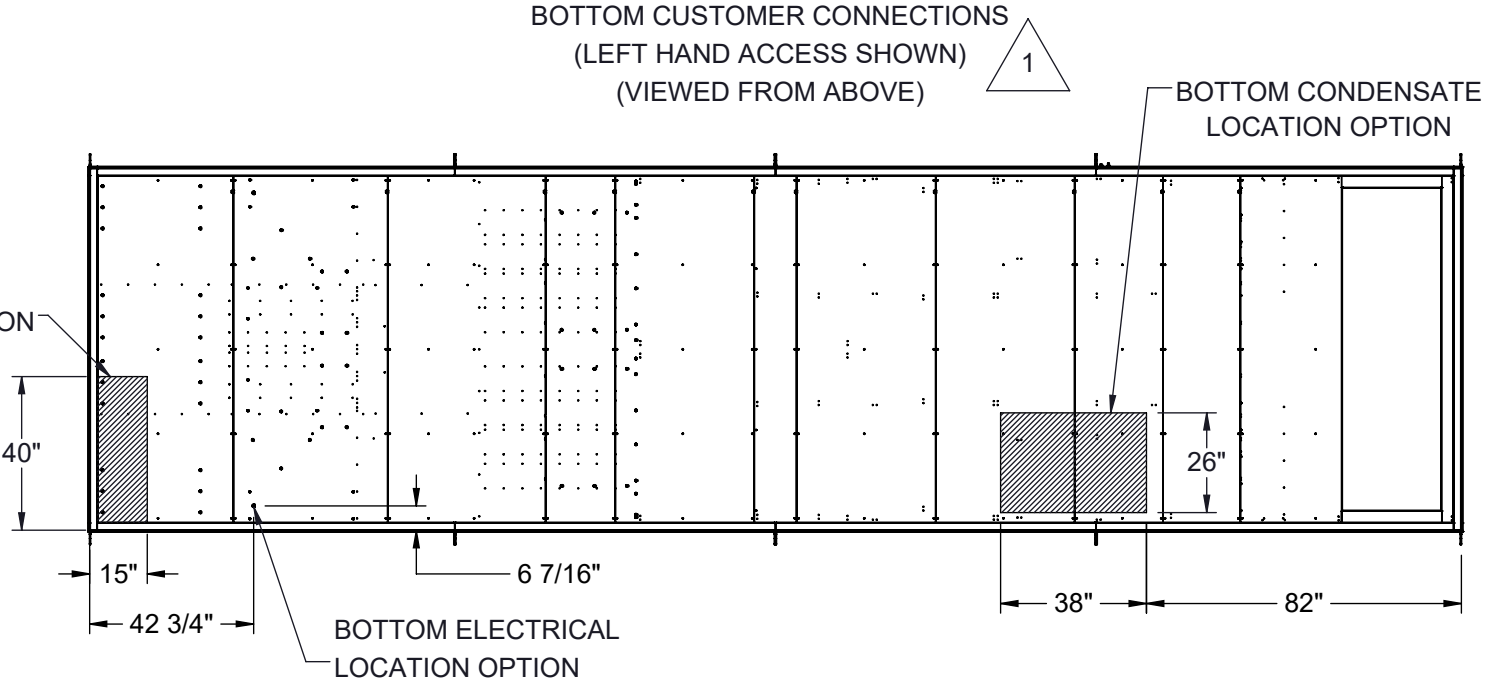
Drawn	ASV	Date Released	1/19/2018
Sheet	1/9		
Scale	NTS		
Rev.	1		

N120 W18485 FREISTADT RD  
GERMANTOWN, WI 53022  
Tel: (262) 946-7400  
Fax: (262) 946-7401

Description	SP 40-50 TON SPLIT ELECT HEAT
Page Title	GENERAL ARRANGEMENT
Drawing Number	G1000-110

CUSTOMER CONNECTION LINE SIZE (in.)		
UNIT SIZE	45 TONS	50 TONS
CONDENSATE (PVC)	1 1/2	1 1/2
DISCHARGE LINE CIRCUIT A (CU)	1 1/8	1 1/8
LIQUID LINE CIRCUIT A (CU)	3/4	7/8
DISCHARGE LINE CIRCUIT B (CU)	1 1/8	1 1/8
LIQUID LINE CIRCUIT B (CU)	7/8	7/8
POOL WATER LINE CIRCUIT A (CPVC)	1	2
POOL WATER LINE CIRCUIT B (CPVC)	2	2
COOLING LOOP (CU)	2 1/2	3

BOTTOM POOL WATER  
CONNECTION LOCATION OPTION

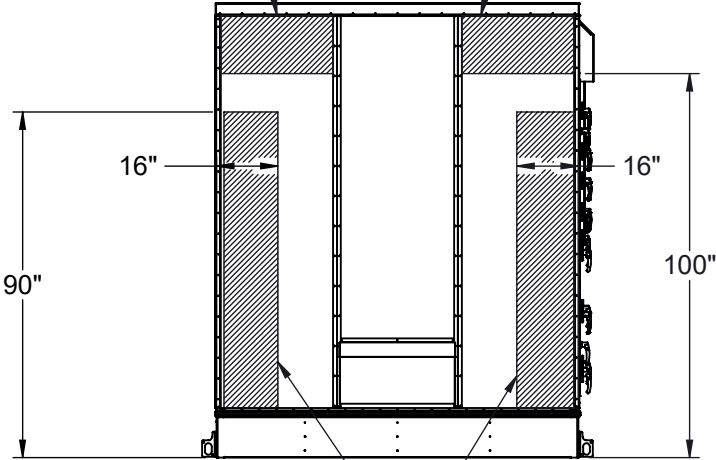


BACK CONNECTIONS VIEW

(NO ORIENTATION CHANGE FOR RH OR LH ACCESS)

RH ACCESS BACK ELECTRICAL  
CONNECTION LOCATION OPTION

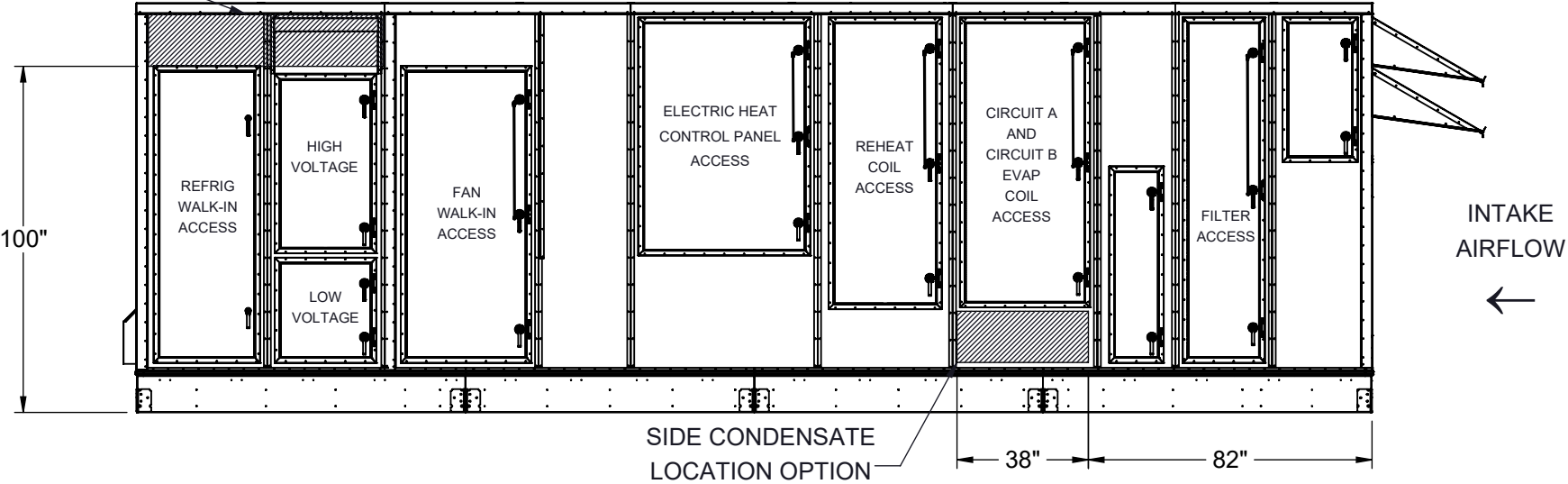
LH ACCESS BACK ELECTRICAL  
CONNECTION LOCATION OPTION



RIGHT BACK REMOTE CONDENSER/WATER  
CONNECTION LOCATION OPTION

LEFT BACK REMOTE CONDENSER/WATER  
CONNECTION LOCATION OPTION

SIDE ELECTRICAL  
CONNECTION LOCATION  
OPTION



NOTES:  
REFER TO SHEET 1 FOR GENERAL NOTES  
LEFT HAND ACCESS SHOWN IN ALL VIEWS  
RIGHT HAND ACCESS OPTIONS LOCATED WITH SAME DIMENSIONS ON OPPOSITE SIDE UNLESS OTHERWISE SPECIFIED



FILTER INFORMATION						
UNIT SIZE	OA QTY	OA SIZE	REPLACEMENT PART NUMBER	RA QTY	RA SIZE	REPLACEMENT PART NUMBER
45-50 TONS	10	18 X 24 X 4	870-056	10	18 X 24 X 4	870-056

Desert Aire has a policy of continuous product and quality improvement. Specifications and dimensions are subject to change without notice. This drawing and information contained herein are the exclusive property of the Desert Aire Corporation. Any use detrimental to the interests of Desert Aire is prohibited.

ALL DIMENSIONS ARE IN INCHES  
TOLERANCE  $\pm 1/8"$

All Dimensions in Inches  
All Angles 90°  
All outside corners 0.125" fillet  
Unless Otherwise Specified



Third Angle Projection

Part weight

Tolerance Unless  
Otherwise Specified  
X.X  $\pm .125$   
X.XX  $\pm .060$   
X.XXX  $\pm .030$   
Angles  $\pm 1^\circ$

Drawn  
ASV  
Date Released  
1/19/2018

Sheet  
2/9

Scale  
NTS

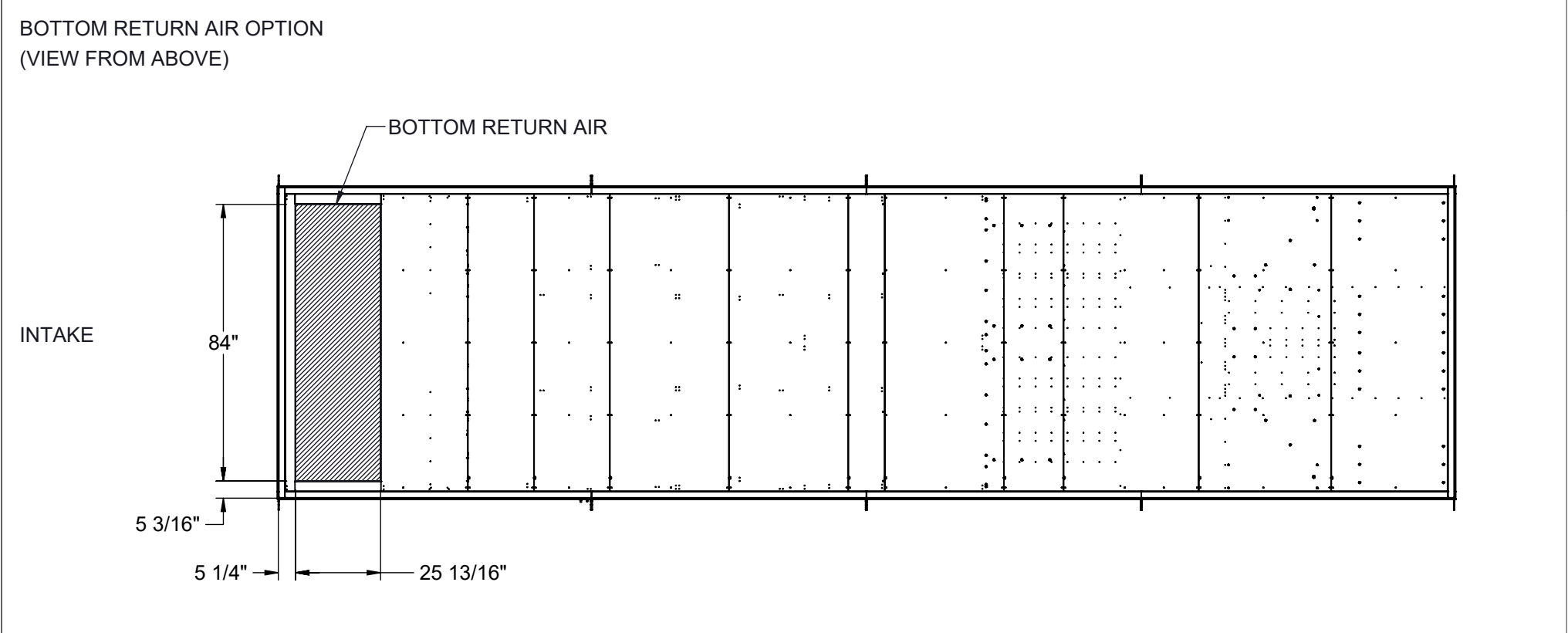
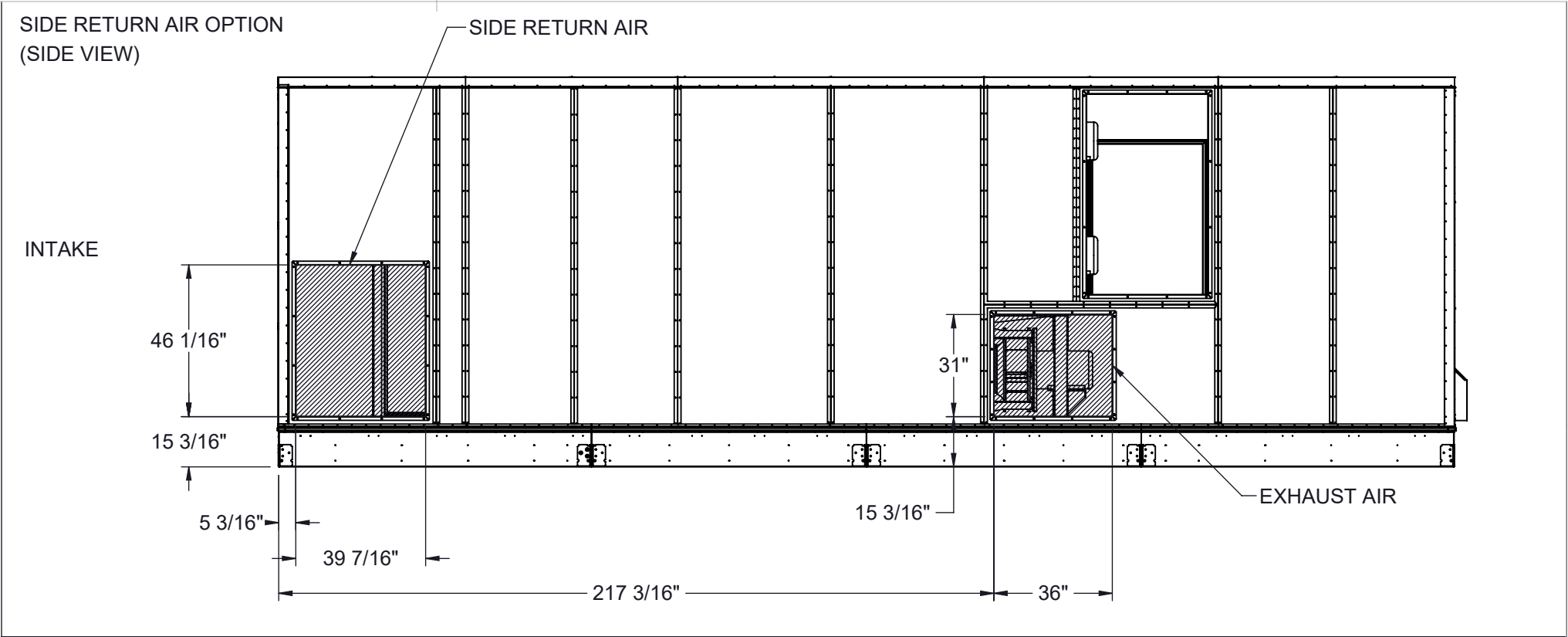
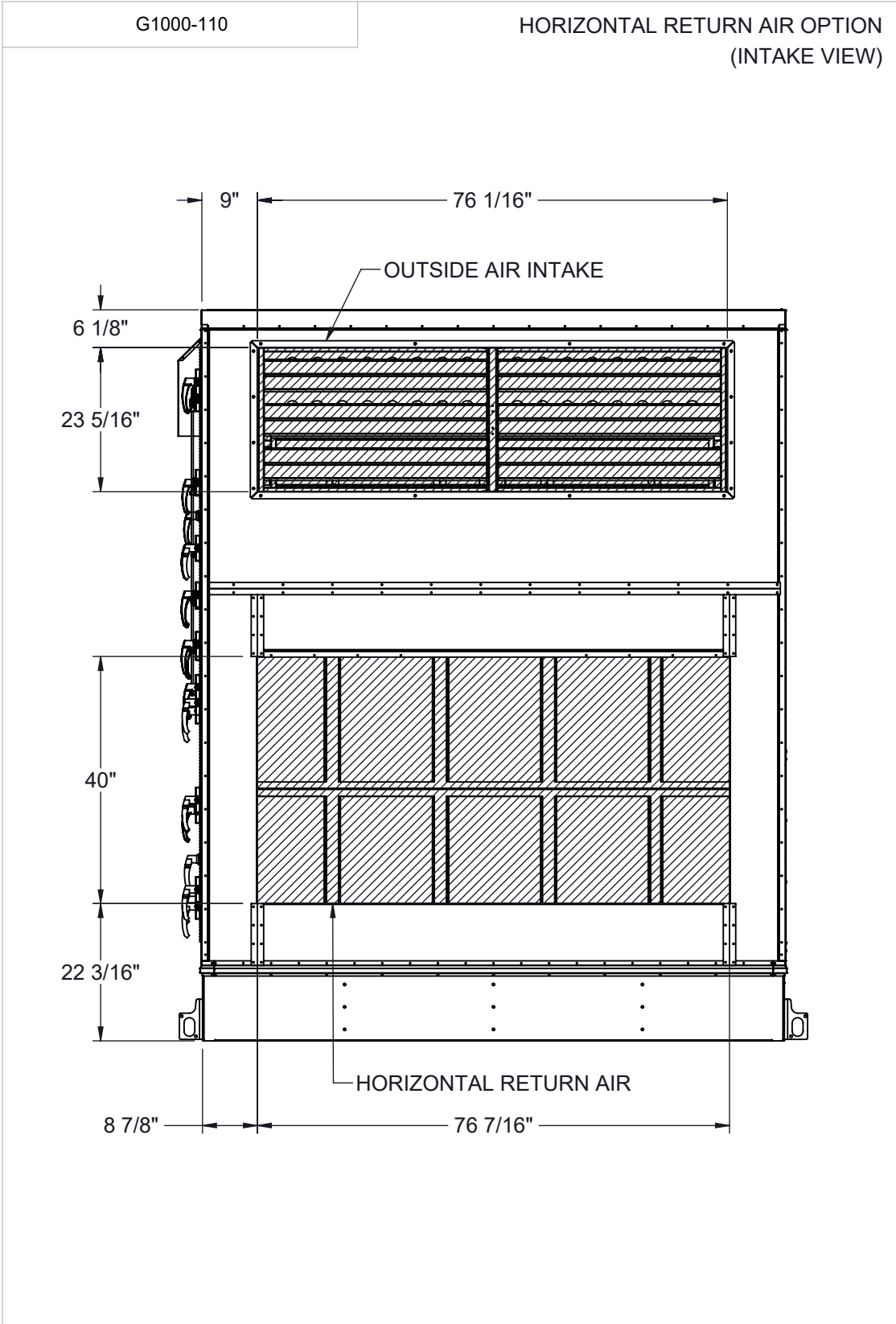


N120 W18485 FREISTADT RD  
GERMANTOWN, WI 53022  
Tel: (262) 946-7400  
Fax: (262) 946-7401

Description  
SP 40-50 TON SPLIT ELECT HEAT

Page Title  
CUSTOMER INTERFACE GA

Drawing Number  
G1000-110



NOTES:  
REFER TO SHEET 1 FOR GENERAL NOTES  
HOODS REMOVED FOR CLARITY  
ACCESS SIDE RETURN AIR OPTION WILL SHIFT FILTER SECTION DOORS TO NON-ACCESS SIDE  
OUTSIDE AIR INTAKE LOCATED IN THE SAME POSITION REGARDLESS OF OPTIONS

Desert Aire has a policy of continuous product and quality improvement. Specifications and dimensions are subject to change without notice. This drawing and information contained herein are the exclusive property of the Desert Aire Corporation. Any use detrimental to the interests of Desert Aire is prohibited.

ALL DIMENSIONS ARE IN INCHES  
TOLERANCE  $\pm 1/8"$

All Dimensions in Inches  
All Angles 90°  
All outside corners 0.125" fillet  
Unless Otherwise Specified



Third Angle Projection

Part weight

Tolerance Unless  
Otherwise Specified  
X.X  $\pm .125$   
X.XX  $\pm .060$   
X.XXX  $\pm .030$   
Angles  $\pm 1^\circ$

Drawn  
ASV  
Date Released  
1/19/2018

Sheet  
3/9

Scale  
NTS



N120 W18485 FREISTADT RD  
GERMANTOWN, WI 53022  
Tel: (262) 946-7400  
Fax: (262) 946-7401

Description  
SP 40-50 TON SPLIT ELECT HEAT

Page Title  
INTAKE OPTIONS GA

Drawing Number  
G1000-110

HORIZONTAL SUPPLY OPTION  
(NO ORIENTATION CHANGE FOR RH OR LH ACCESS)  
(DISCHARGE VIEW)

Technical drawing of a cabinet with the following dimensions and labels:

- HORIZONTAL SUPPLY**: Label pointing to the top edge of the cabinet.
- 98"**: Vertical dimension indicating the height of the cabinet.
- 15 3/16"**: Vertical dimension indicating the height of the base.
- 2 15/16"**: Horizontal dimension indicating the width of the base.
- 25"**: Horizontal dimension indicating the width of the main cabinet body.

Technical drawing of the front elevation of a cabinet. The drawing shows a cabinet with a horizontal supply opening at the top right. The overall height is 98". The overall width is 15 3/16". The width of the horizontal supply opening is 25". The width of the cabinet body is 3 3/8".

## INTAKE

Technical drawing of a cabinet layout. The drawing shows a long cabinet with a total width of 288 7/16". A section of the cabinet is highlighted with a hatched pattern, indicating a top exhaust feature. The dimensions for this section are 253 3/4" in width and 84" in height. The distance from the left edge of the cabinet to the start of the hatched section is 5 9/16". The distance from the end of the hatched section to the right edge of the cabinet is 28 3/4". The distance from the left edge of the cabinet to the right edge of the hatched section is 253 3/4". The distance from the right edge of the hatched section to the right edge of the cabinet is 65 3/4". The distance from the top edge of the hatched section to the top edge of the cabinet is 25 3/8". The distance from the bottom edge of the hatched section to the bottom edge of the cabinet is 3 5/16".

## INTAKE

Technical drawing of a mobile office unit, showing a side elevation. The drawing includes the following dimensions and features:

- Overall width:  $245 \frac{7}{16}$ "
- Overall height:  $52 \frac{3}{16}$ "
- Height of the upper section: 61"
- Width of the upper section: 37"
- Label: "SIDE SUPPLY" pointing to the upper section.
- Internal features include a door on the left, a staircase in the center, and a shaded rectangular area in the upper right section.

TOP EXHAUST WILL CHANGE SIDE LOCATION BASED ON ACCESS SIDE SELECTION

ALL DIMENSIONS ARE IN INCHES  
TOLERANCE  $\pm 1/8"$

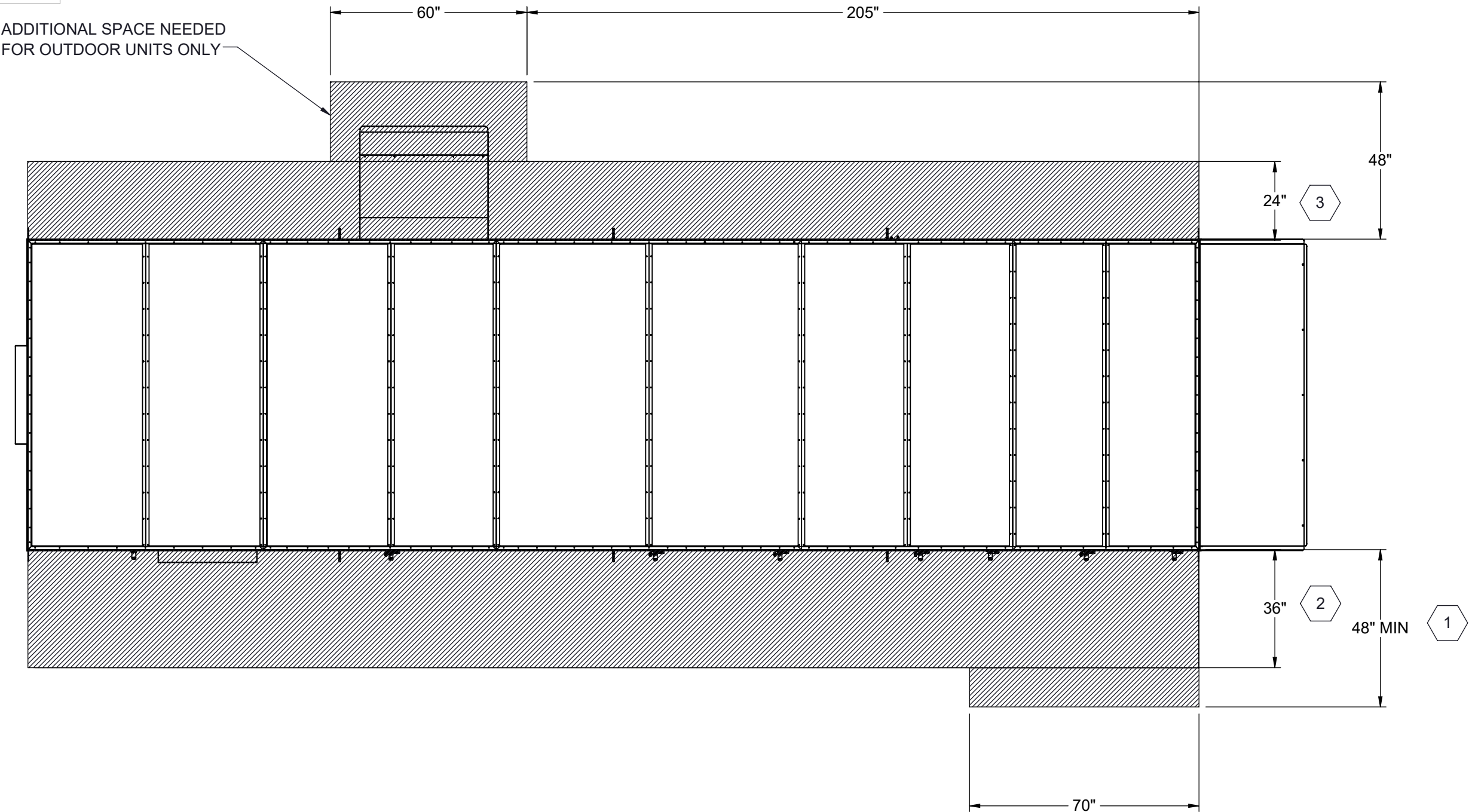
Part weight

Scale

NTS



N120 W18485 FREISTADT RD  
GERMANTOWN, WI 53022  
Tel: (262) 946-7400  
Fax: (262) 946-7401

Drawing Number	G1000-110
----------------	-----------



- 1 96" RECOMMENDED FOR FILTER ACCESS.
- 2 120" CLEARANCE ON ACCESS SIDE RECOMMENDED FOR FAN AND COIL SERVICE
- 3 REQUIRED FOR ASSEMBLY OF SECTIONED UNITS ONLY

NOTES:  
REFER TO SHEET 1 FOR GENERAL NOTES  
LEFT HAND ACCESS SHOWN IN ALL VIEWS  
RIGHT HAND ACCESS OPTIONS LOCATED WITH SAME DIMENSIONS ON OPPOSITE SIDE UNLESS OTHERWISE SPECIFIED

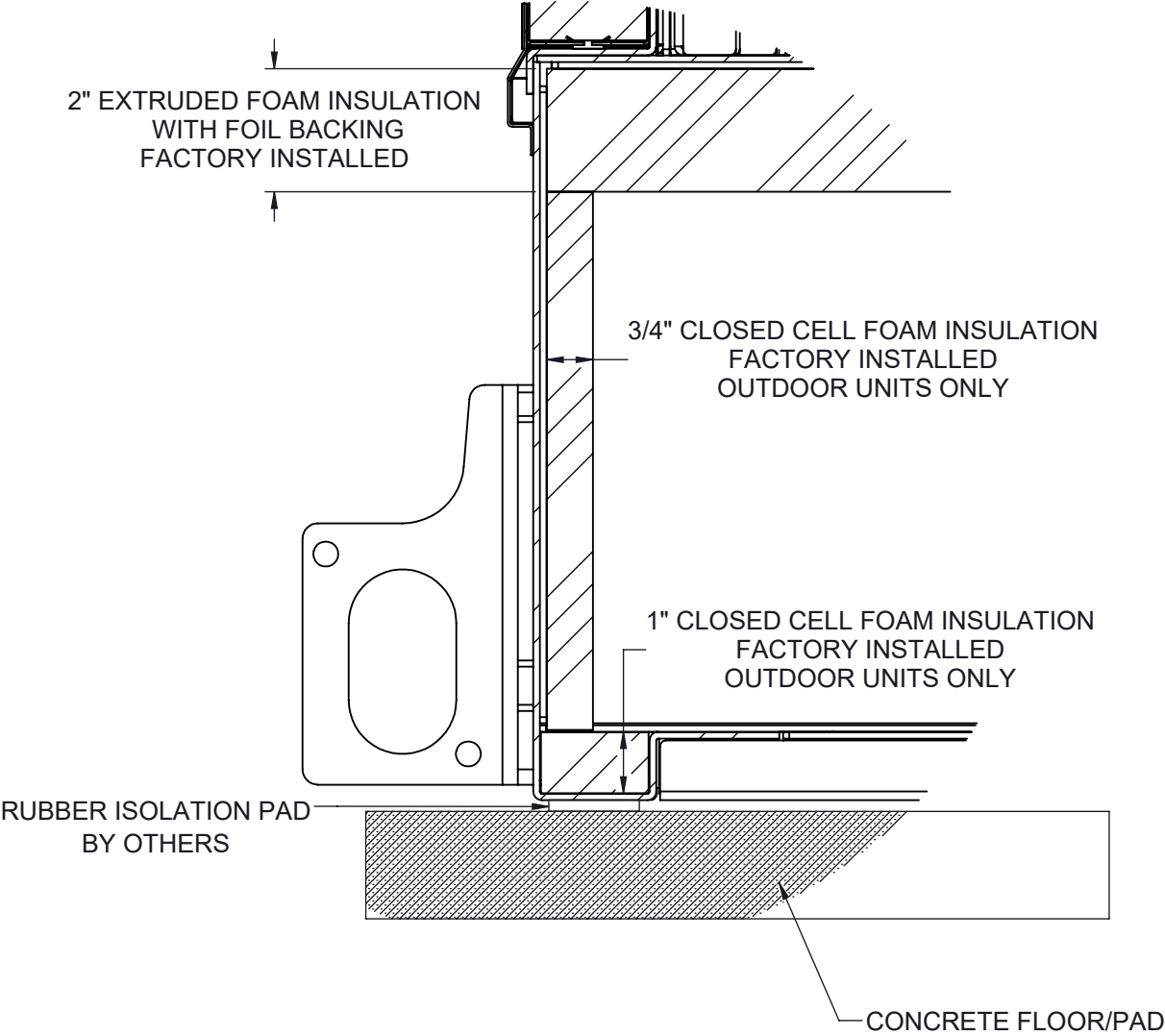
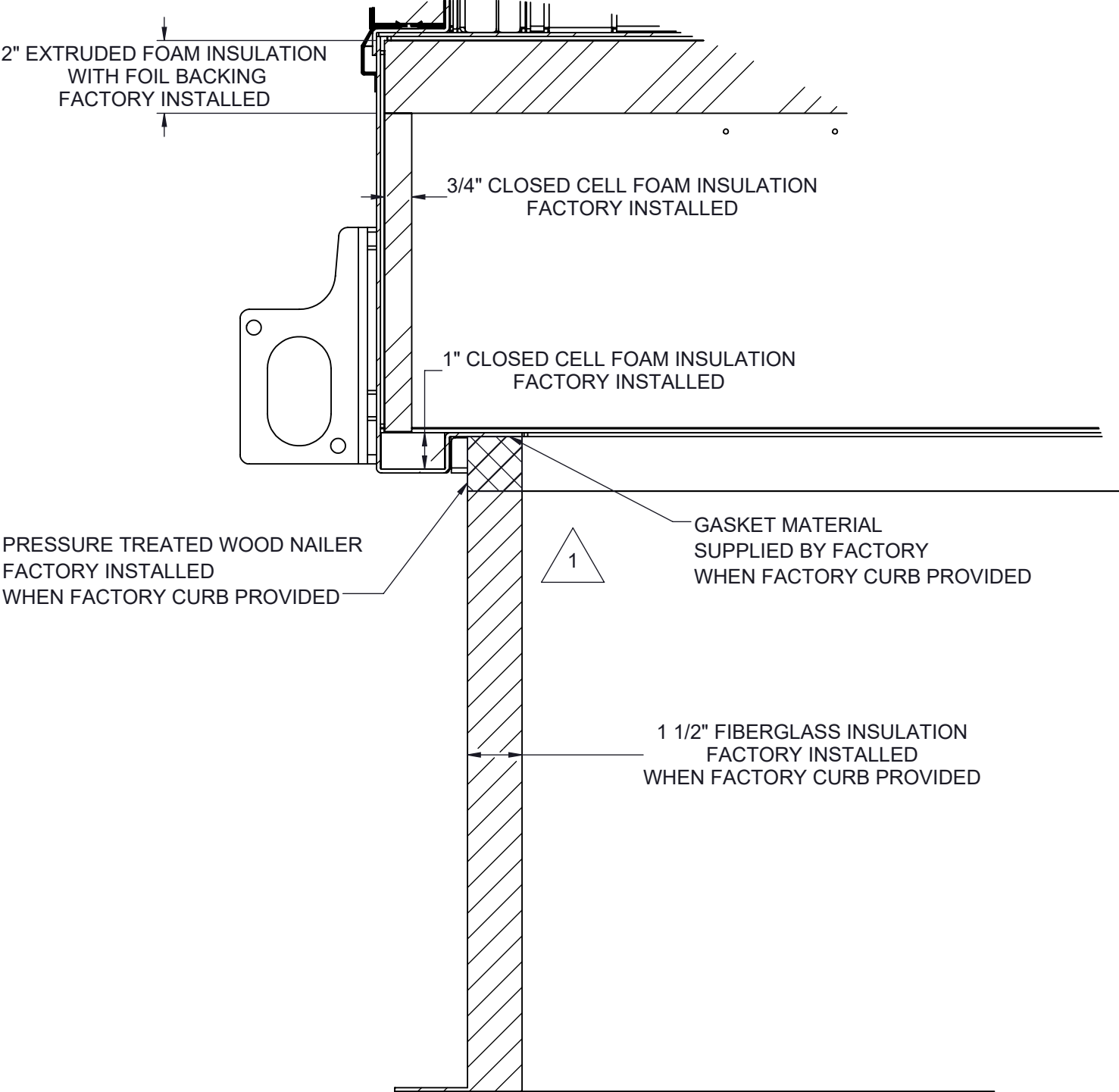
Desert Aire has a policy of continuous product and quality improvement. Specifications and dimensions are subject to change without notice. This drawing and information contained herein are the exclusive property of the Desert Aire Corporation. Any use detrimental to the interests of Desert Aire is prohibited.	<div>All Dimensions in Inches All Angles 90° All outside corners 0.125" fillet Unless Otherwise Specified</div> <div><div></div><div>Third Angle Projection</div></div>	Tolerance Unless Otherwise Specified X.X ±.125 X.XX ±.060 X.XXX ±.030 Angles ±1°		<div></div> <div>N120 W18485 FREISTADT RD GERMANTOWN, WI 53022 Tel: (262) 946-7400 Fax: (262) 946-7401</div>	
		Drawn	Date Released		Description
		ASV	1/19/2018		SP 40-50 TON SPLIT ELECT HEAT
		Sheet	5/9		Page Title
ALL DIMENSIONS ARE IN INCHES TOLERANCE ± 1/8"	Part weight	Scale	Rev.	Drawing Number	
		NTS	1	G1000-110	
			UNIT CLEARANCE GA		





CURB MOUNT

PAD MOUNT



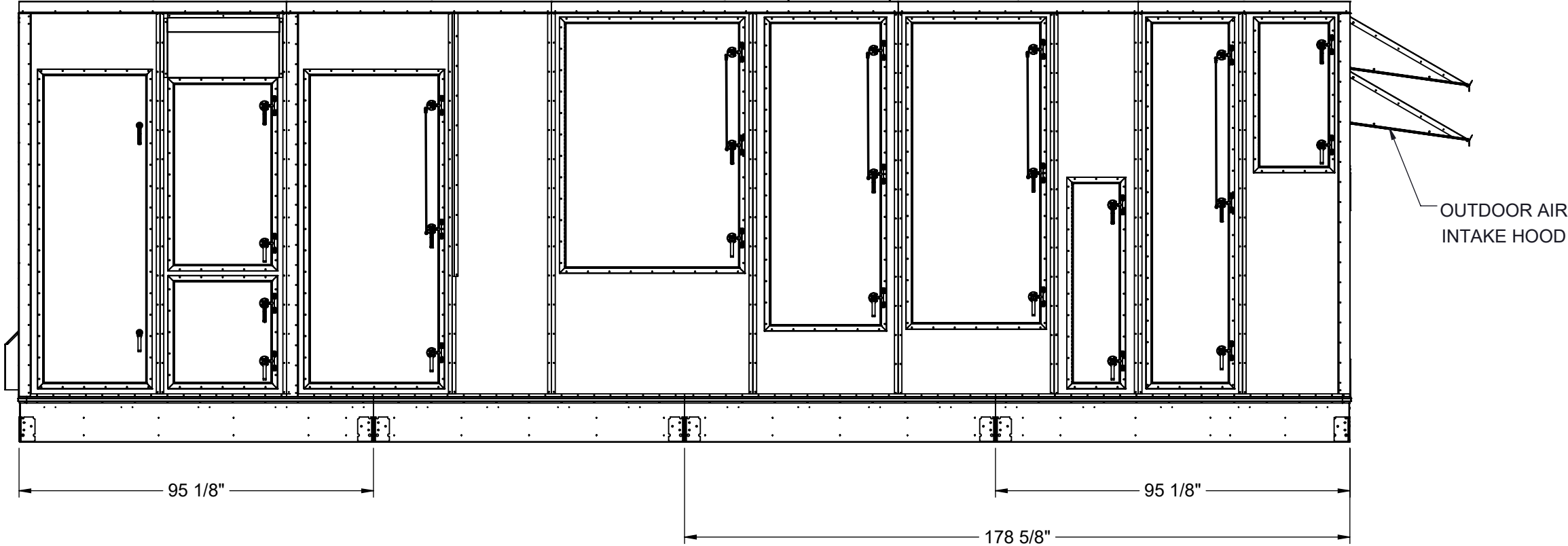
1 ALL EXPOSED METAL TO BE SPRAY FOAM INSULATION AFTER INSTALLATION

NOTES:  
REFER TO SHEET 1 FOR GENERAL NOTES  
SEE SHEET 6 NOTES FOR CURB SPECIFICATIONS

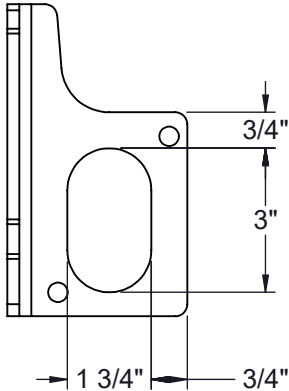
Desert Aire has a policy of continuous product and quality improvement. Specifications and dimensions are subject to change without notice. This drawing and information contained herein are the exclusive property of the Desert Aire Corporation. Any use detrimental to the interests of Desert Aire is prohibited.		All Dimensions in Inches All Angles 90° All outside corners 0.125" fillet Unless Otherwise Specified		Tolerance Unless Otherwise Specified X.X ±.125 X.XX ±.060 X.XXX ±.030 Angles ±1°		<div>DESERT AIRE</div> <div>N120 W18485 FREISTADT RD GERMANTOWN, WI 53022 Tel: (262) 946-7400 Fax: (262) 946-7401</div>	
Third Angle Projection		Drawn ASV		Date Released 1/19/2018		Description SP 40-50 TON SPLIT ELECT HEAT	
ALL DIMENSIONS ARE IN INCHES TOLERANCE ± 1/8"		Sheet 7/9		Page Title MOUNTING DETAILS GA		Drawing Number G1000-110	
Part weight		Scale NTS		Rev. 1			

SHIP LOOSE ITEMS  
EXHAUST HOOD

DA PART NO	DESCRIPTION	QTY
HOOD	EXHAUST ASSEMBLY	1
807-023	SCREW #8-18X1/2 SS	36
990-105	CAULK WHITE	1



LUG DETAIL




**NOTES:**  
REFER TO SHEET 1 FOR GENERAL NOTES AND HOOD DETAILS

Desert Aire has a policy of continuous product and quality improvement. Specifications and dimensions are subject to change without notice. This drawing and information contained herein are the exclusive property of the Desert Aire Corporation. Any use detrimental to the interests of Desert Aire is prohibited.

ALL DIMENSIONS ARE IN INCHES  
TOLERANCE  $\pm 1/8"$


All Dimensions in Inches  
All Angles 90°  
All outside corners 0.125" fillet  
Unless Otherwise Specified

 Third Angle Projection

Part weight

Tolerance Unless Otherwise Specified  
X.X  $\pm .125$   
X.XX  $\pm .060$   
X.XXX  $\pm .030$   
Angles  $\pm 1^\circ$

Drawn <b>ASV</b>	Date Released <b>1/19/2018</b>
Sheet <b>8/9</b>	Rev. <b>1</b>
Scale <b>NTS</b>	

 **DESERT  
AIRE**

N120 W18485 FREISTADT RD  
GERMANTOWN, WI 53022  
Tel: (262) 946-7400  
Fax: (262) 946-7401

Description <b>SP 40-50 TON SPLIT ELECT HEAT</b>
Page Title <b>SHIPPING/LIFTING DETAILS GA</b>
Drawing Number <b>G1000-110</b>



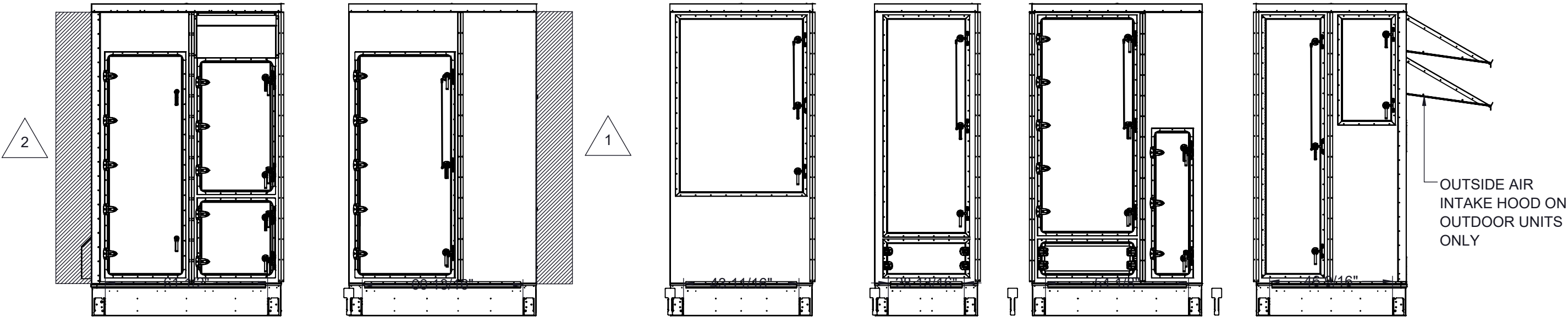
SHIP LOOSE ITEMS  
EXHAUST HOOD

DA PART NO	DESCRIPTION	QTY
HOOD	EXHAUST ASSEMBLY	1
807-023	SCREW #8-18X1/2 SS	36
990-105	CAULK WHITE	1

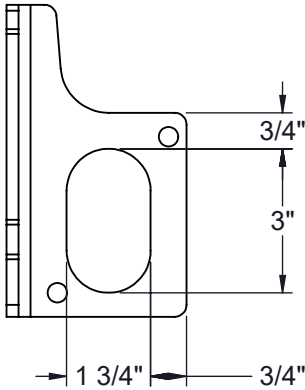
SHIP LOOSE ITEMS  
SECTION ITEMS

DA PART NO	DESCRIPTION	QTY
807-007	BOLT 3/8-16X1 SS	20
807-008	WASHER 3/8 FLAT SS	20
807-009	WASHER LOCK SPLIT 3/8 SS	20
807-010	NUT 3/8-16 SS	20
807-023	SCREW #8-18X1/2 SS	860
807-223	SCREW #10-32X1/2 MACHINE HEX	20
950-089	TAPE SEAM SEALER 2"	150 FT (3 ROLLS)
950-090	TAPE SEAM SEALER 4"	17 FT
990-105	CAULK WHITE	9
352-098-040	BASE Z CVR SIDE, MID SEC	10
STRIPS	2.5 X 103" METAL SIDE STRIPS	10
STRIPS	2.5 X 92 1/2" METAL TOP STRIPS	5
STRIPS	1" X 3" X 24" METAL CORNER STRIPS	10

SHIPPING AND LIFTING DETAILS FOR MULTI-SECTION CONSTRUCTION OPTION ONLY



LUG DETAIL



1 BACKDRAFT DAMPER OPTION ADDS AN ADDITIONAL 9" TO FAN SECTION LENGTH

2 REMOTE CONDENSER/WATER CONNECTIONS WILL ADD AN ADDITIONAL MAXIMUM OF 8" TO LENGTH

**NOTES:**  
REFER TO SHEET 1 FOR GENERAL NOTES AND HOOD DETAILS  
UNIT SHIPPED IN SIX SECTIONS SEE I/O MANUAL FOR ASSEMBLY DETAILS

Desert Aire has a policy of continuous product and quality improvement. Specifications and dimensions are subject to change without notice. This drawing and information contained herein are the exclusive property of the Desert Aire Corporation. Any use detrimental to the interests of Desert Aire is prohibited.

All Dimensions in Inches  
All Angles 90°  
All outside corners 0.125" fillet  
Unless Otherwise Specified

Tolerance Unless  
Otherwise Specified  
X.X ±.125  
X.XX ±.060  
X.XXX ±.030  
Angles ±1°



N120 W18485 FREISTADT RD  
GERMANTOWN, WI 53022  
Tel: (262) 946-7400  
Fax: (262) 946-7401



Third Angle Projection

Part weight

Drawn  
ASV  
Date Released  
1/19/2018

Sheet  
9/9

Scale  
NTS

Description  
SP 40-50 TON SPLIT ELECT HEAT

Page Title  
SECTIONED LIFTING DETAILS GA

Drawing Number  
G1000-110