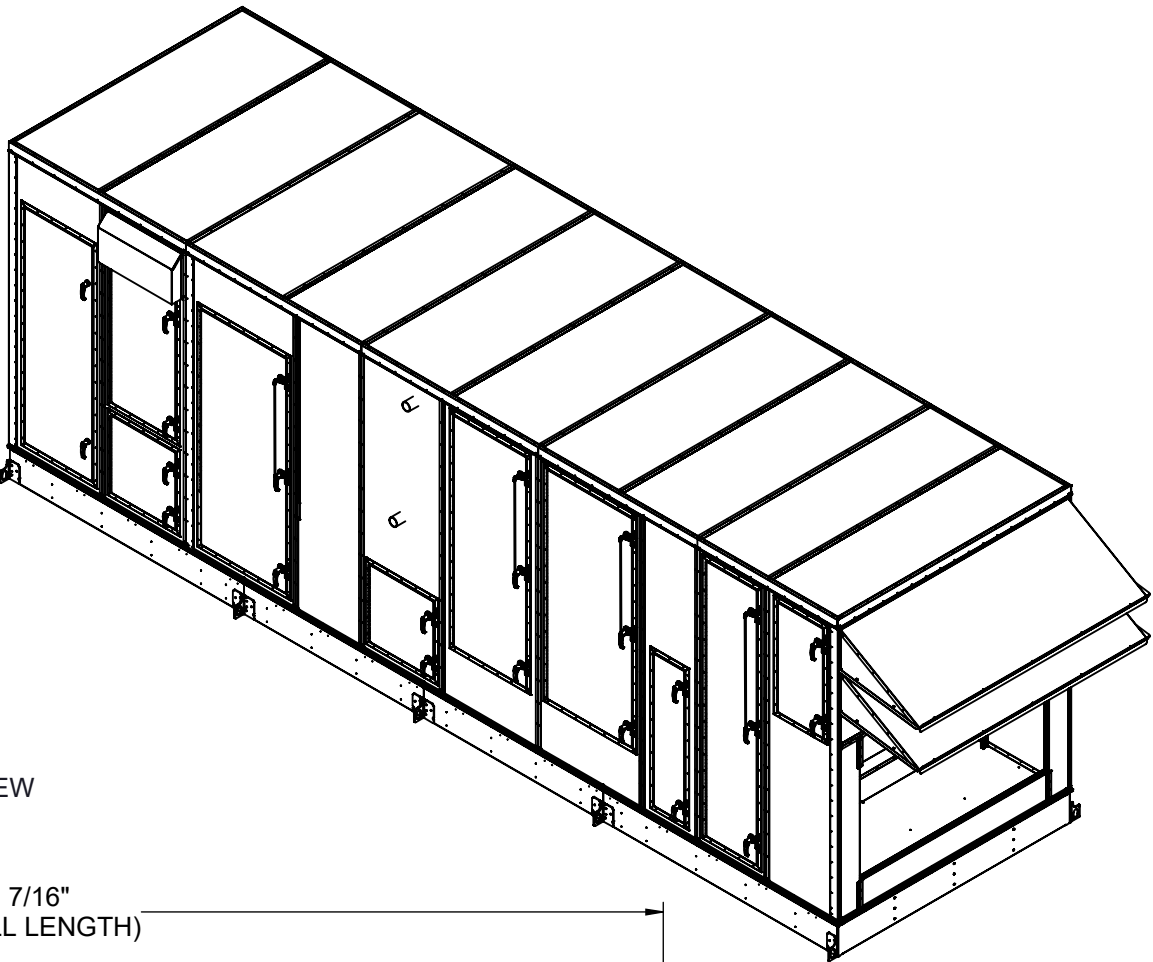
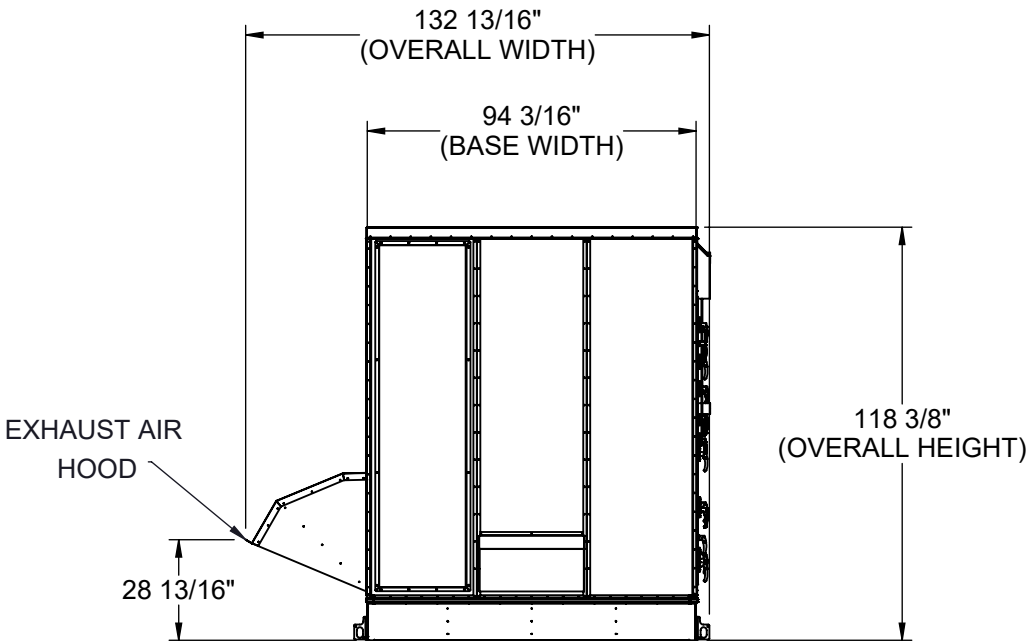


GENERAL NOTES FOR APPLICABLE SHEETS:

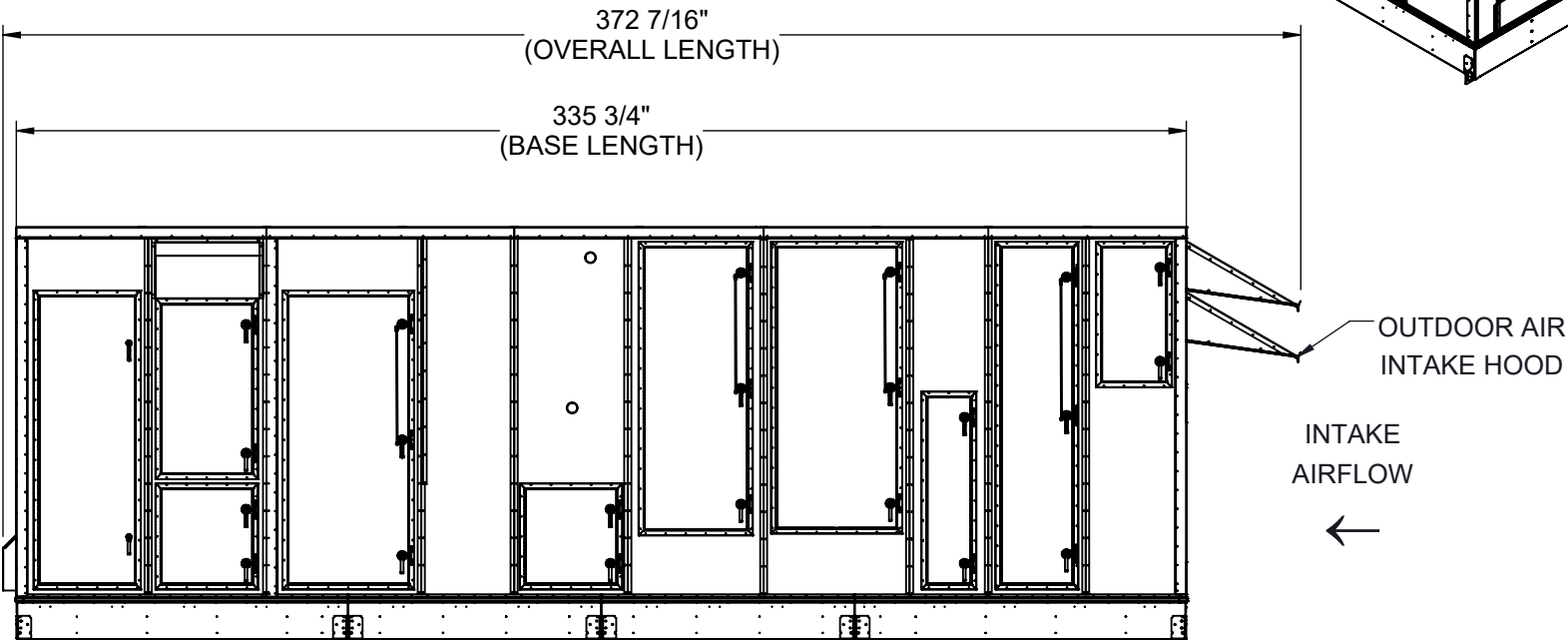
LEFT HAND ACCESS SHOWN IN ALL VIEWS
RIGHT HAND ACCESS OPTIONS LOCATED WITH SAME DIMENSIONS ON OPPOSITE SIDE UNLESS OTHERWISE SPECIFIED
WEIGHTS SHOWN REFLECT FULLY OPTIONED ESTIMATED UNIT WEIGHT



BACK VIEW



LEFT SIDE VIEW



UNIT SIZE	ESTIMATED WEIGHT (lbs.)
45-50 TONS	15500

Desert Aire has a policy of continuous product and quality improvement. Specifications and dimensions are subject to change without notice. This drawing and information contained herein are the exclusive property of the Desert Aire Corporation. Any use detrimental to the interests of Desert Aire is prohibited.

ALL DIMENSIONS ARE IN INCHES
TOLERANCE $\pm 1/8"$

All Dimensions in Inches
All Angles 90°
All outside corners 0.125" fillet
Unless Otherwise Specified



Third Angle Projection

Part weight

Tolerance Unless Otherwise Specified
X.X $\pm .125$
X.XX $\pm .060$
X.XXX $\pm .030$
Angles $\pm 1^\circ$

Drawn
ASV
Date Released
1/19/2018

Sheet
1/9

Scale
NTS



N120 W18485 FREISTADT RD
GERMANTOWN, WI 53022
Tel: (262) 946-7400
Fax: (262) 946-7401

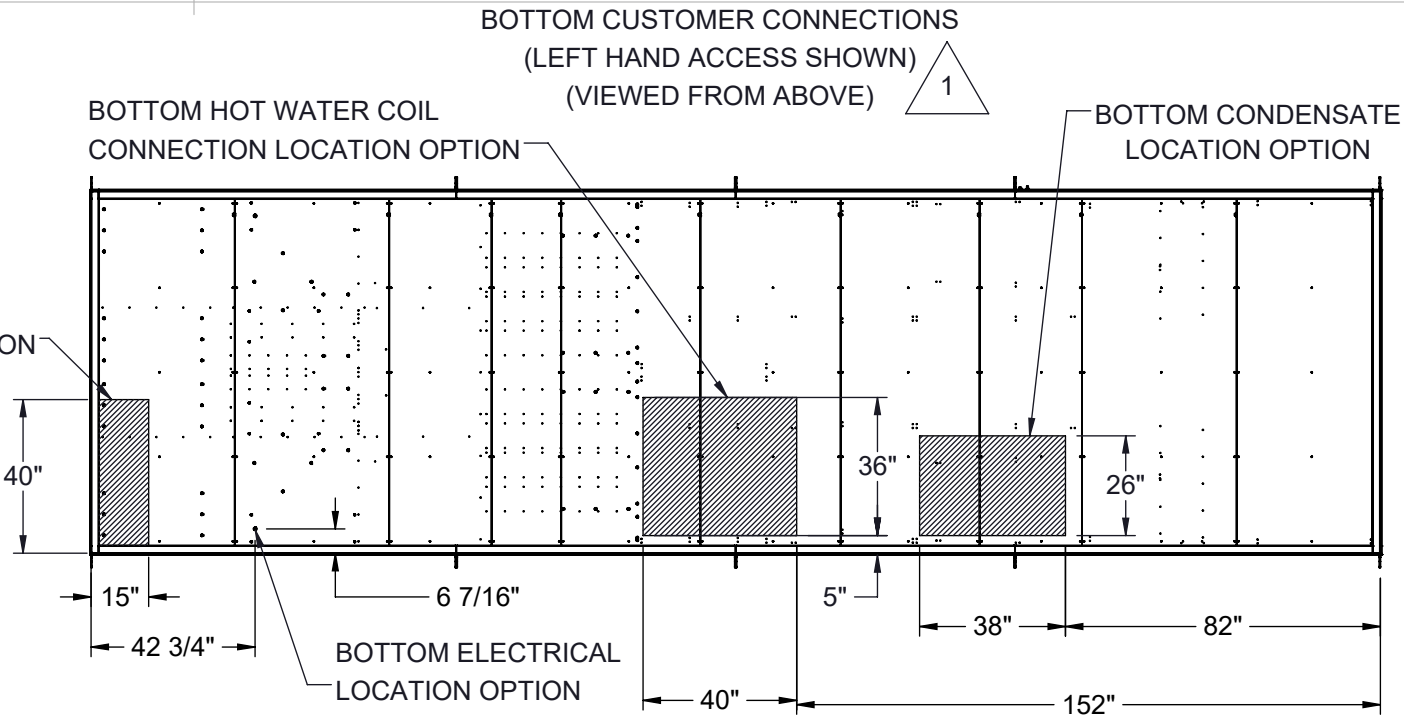
Description
SP 40-50 TON SPLIT HWC

Page Title
GENERAL ARRANGEMENT

Drawing Number
G1000-106

CUSTOMER CONNECTION LINE SIZE (in.)		
UNIT SIZE	45 TONS	50 TONS
CONDENSATE (PVC)	1 1/2	1 1/2
HOT WATER COIL (CU)	3	3
POOL WATER LINE CIRCUIT A (CPVC)	1	2
POOL WATER LINE CIRCUIT B (CPVC)	2	2
DISCHARGE LINE CIRCUIT A (CU)	1 1/8	1 1/8
LIQUID LINE CIRCUIT A (CU)	3/4	7/8
DISCHARGE LINE CIRCUIT B (CU)	1 1/8	1 1/8
LIQUID LINE CIRCUIT B (CU)	7/8	7/8
COOLING LOOP (CU)	2 1/2	3

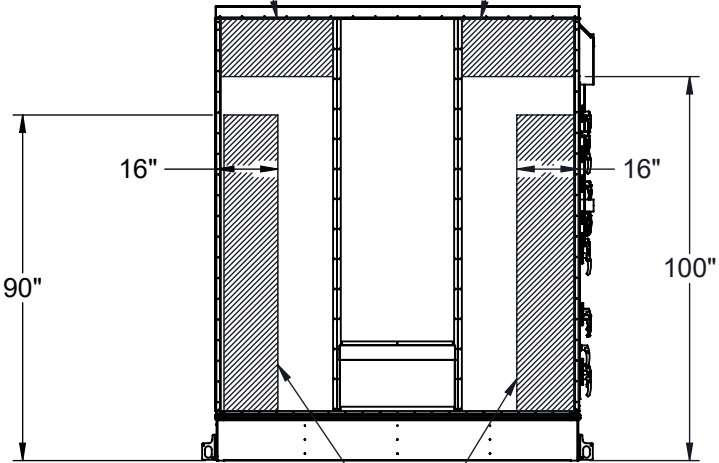
BOTTOM POOL WATER
CONNECTION LOCATION OPTION



BACK CONNECTIONS VIEW
(NO ORIENTATION CHANGE FOR RH OR LH ACCESS)

RH ACCESS BACK ELECTRICAL
CONNECTION LOCATION OPTION

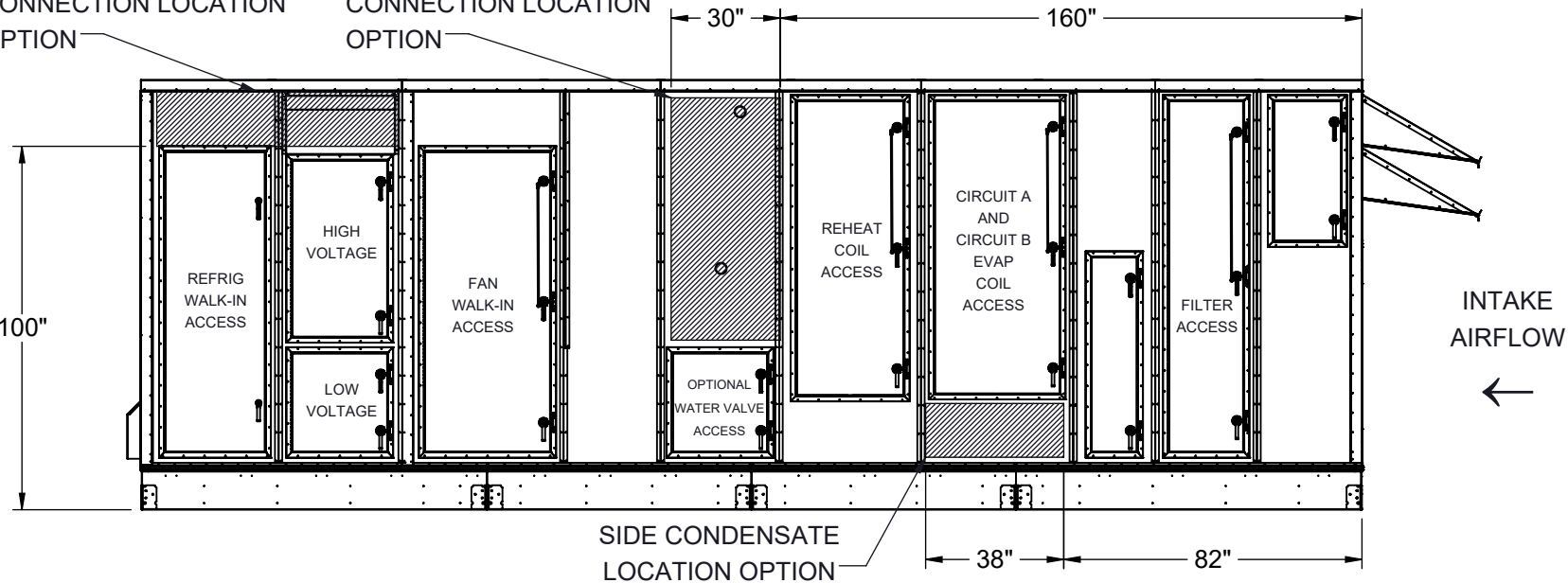
LH ACCESS BACK ELECTRICAL
CONNECTION LOCATION OPTION



LEFT SIDE CONNECTION VIEW
(LEFT HAND ACCESS SHOWN)

SIDE ELECTRICAL
CONNECTION LOCATION
OPTION

SIDE HOT WATER COIL
CONNECTION LOCATION
OPTION



NOTES:
REFER TO SHEET 1 FOR GENERAL NOTES
LEFT HAND ACCESS SHOWN IN ALL VIEWS
RIGHT HAND ACCESS OPTIONS LOCATED WITH SAME DIMENSIONS ON OPPOSITE SIDE UNLESS OTHERWISE SPECIFIED

FILTER INFORMATION

UNIT SIZE	OA QTY	OA SIZE	REPLACEMENT PART NUMBER	RA QTY	RA SIZE	REPLACEMENT PART NUMBER
45-50 TONS	10	18 X 24 X 4	870-056	10	18 X 24 X 4	870-056

Desert Aire has a policy of continuous product and quality improvement. Specifications and dimensions are subject to change without notice. This drawing and information contained herein are the exclusive property of the Desert Aire Corporation. Any use detrimental to the interests of Desert Aire is prohibited.

ALL DIMENSIONS ARE IN INCHES
TOLERANCE $\pm 1/8"$

All Dimensions in Inches
All Angles 90°
All outside corners 0.125" fillet
Unless Otherwise Specified



Third Angle Projection

Part weight

Tolerance Unless
Otherwise Specified
X.X $\pm .125$
X.XX $\pm .060$
X.XXX $\pm .030$
Angles $\pm 1^\circ$

Drawn
ASV
Date Released
1/19/2018

Sheet
2/9

Scale
NTS
Rev.
1



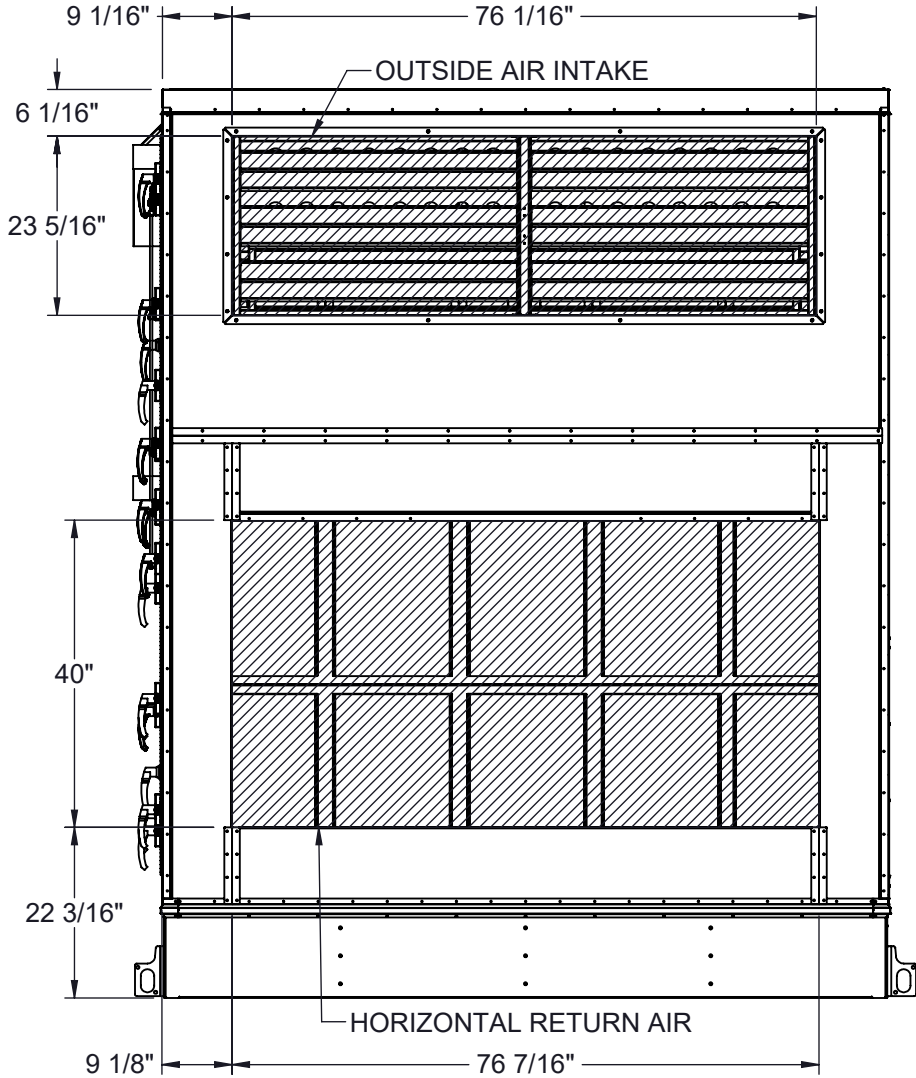
N120 W18485 FREISTADT RD
GERMANTOWN, WI 53022
Tel: (262) 946-7400
Fax: (262) 946-7401

Description
SP 40-50 TON SPLIT HWC

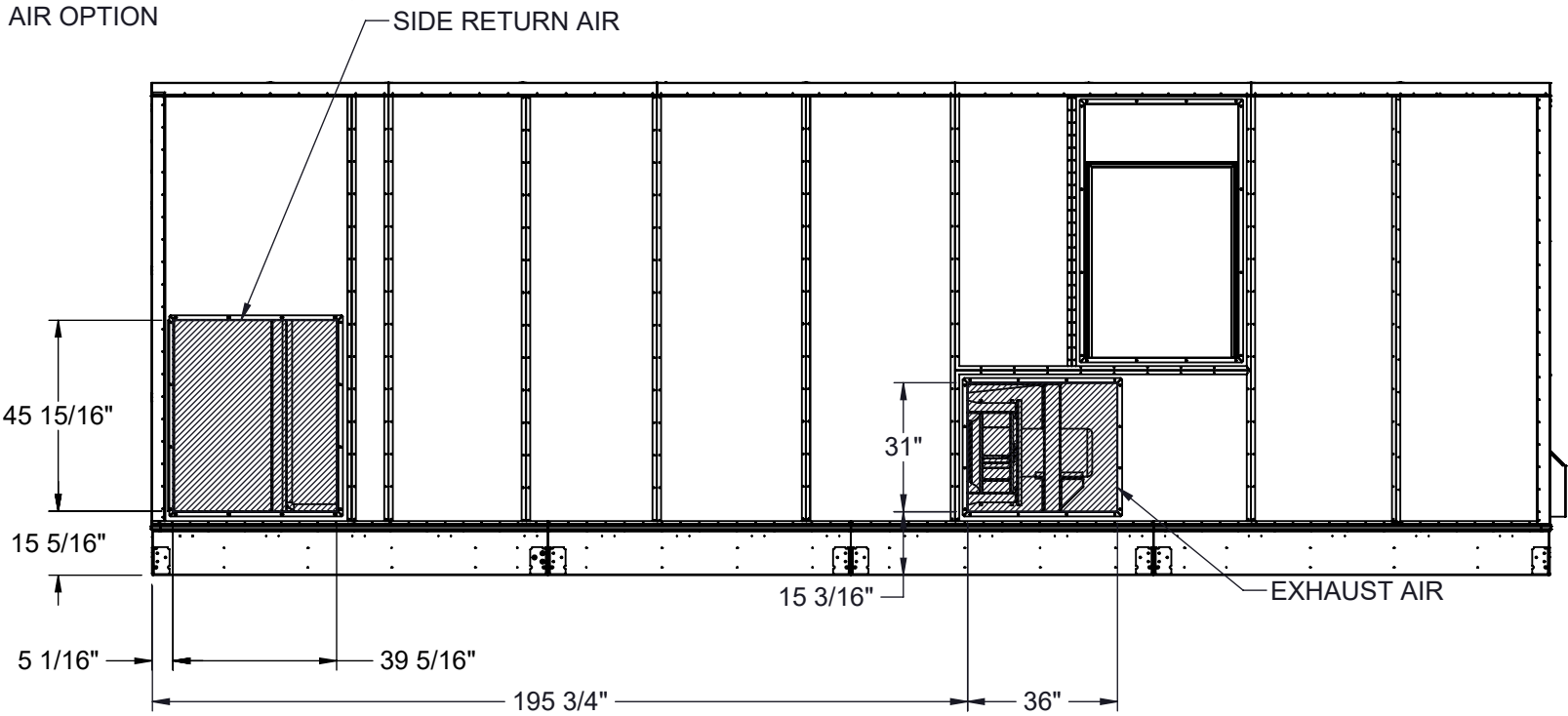
Page Title
CUSTOMER INTERFACE GA

Drawing Number
G1000-106

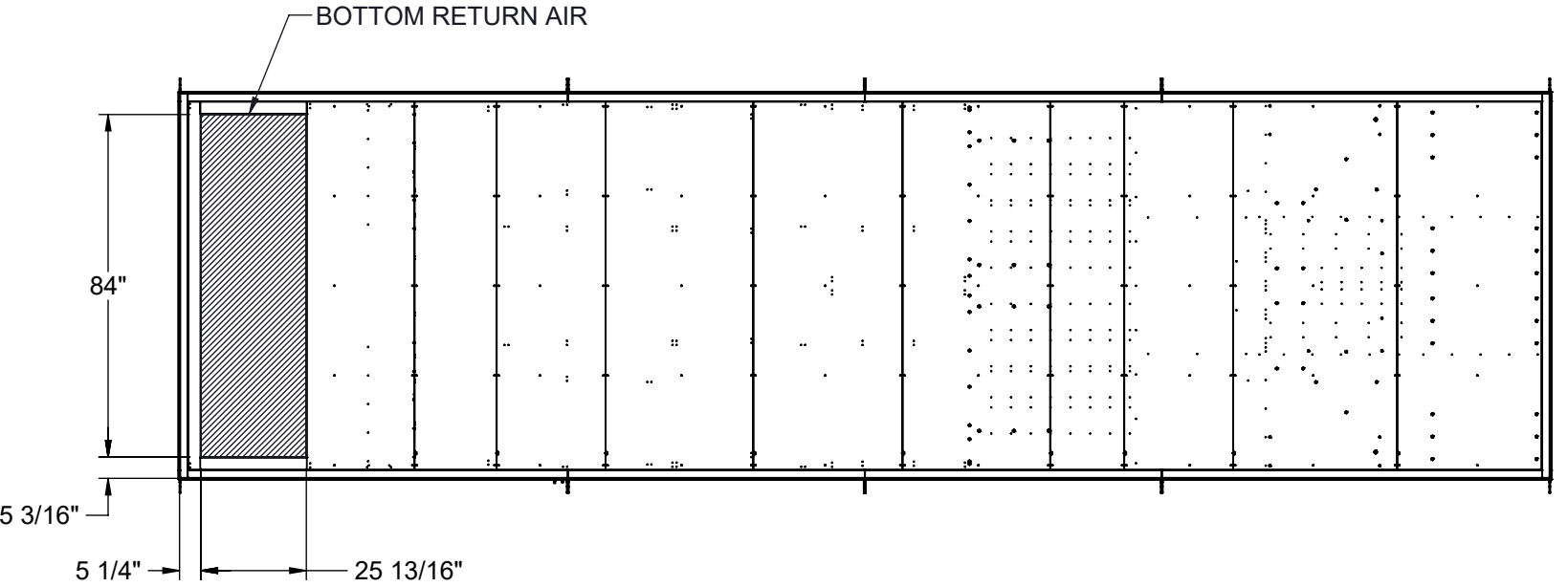
HORIZONTAL RETURN AIR OPTION
(INTAKE VIEW)



SIDE RETURN AIR OPTION
(SIDE VIEW)



BOTTOM RETURN AIR OPTION
(VIEW FROM ABOVE)



NOTES:
REFER TO SHEET 1 FOR GENERAL NOTES
HOODS REMOVED FOR CLARITY
ACCESS SIDE RETURN AIR OPTION WILL SHIFT FILTER SECTION DOORS TO NON-ACCESS SIDE
OUTSIDE AIR INTAKE LOCATED IN THE SAME POSITION REGARDLESS OF OPTIONS

Desert Aire has a policy of continuous product and quality improvement. Specifications and dimensions are subject to change without notice. This drawing and information contained herein are the exclusive property of the Desert Aire Corporation. Any use detrimental to the interests of Desert Aire is prohibited.

ALL DIMENSIONS ARE IN INCHES
TOLERANCE $\pm 1/8"$

All Dimensions in Inches
All Angles 90°
All outside corners 0.125" fillet
Unless Otherwise Specified



Third Angle Projection

Part weight

Tolerance Unless
Otherwise Specified
X.X $\pm .125$
X.XX $\pm .060$
X.XXX $\pm .030$
Angles $\pm 1^\circ$

Drawn
ASV
Date Released
1/19/2018

Sheet
3/9

Scale
NTS



N120 W18485 FREISTADT RD
GERMANTOWN, WI 53022
Tel: (262) 946-7400
Fax: (262) 946-7401

Description
SP 40-50 TON SPLIT HWC

Page Title
INTAKE OPTIONS GA

Drawing Number
G1000-106

HORIZONTAL SUPPLY OPTION
(NO ORIENTATION CHANGE FOR RH OR LH ACCESS)
(DISCHARGE VIEW)

Diagram showing the front elevation of the unit. Key dimensions and components are labeled:

- HORIZONTAL SUPPLY**: Points to the top horizontal supply line.
- 98"**: Vertical dimension of the main unit body.
- 15 3/16"**: Vertical dimension of the base.
- 2 15/16"**: Horizontal dimension of the base section.
- 25"**: Horizontal dimension of the main unit body.
- ENTRANCE VIEW**: Points to the entrance area.

Technical drawing of a cabinet with dimensions and labels:

- HORIZONTAL SUPPLY**: Label pointing to the top horizontal supply line.
- 98"**: Vertical dimension indicating the height of the cabinet.
- 15 3/16"**: Horizontal dimension indicating the width of the cabinet.
- 25"**: Horizontal dimension indicating the width of the central section.
- 3 3/8"**: Horizontal dimension indicating the width of the rightmost section.

INTAKE

Technical drawing of a kitchen layout showing a long counter with a sink and a stove. Dimensions are provided for the counter, sink, and stove.

- Counter length (from left wall to start of sink): $232 \frac{5}{16}$ "
- Counter length (from end of counter to right wall): $3 \frac{5}{16}$ "
- Counter length (from left wall to right wall): 267 "
- Sink width: $28 \frac{3}{4}$ "
- Sink height: 84 "
- Stove width: $65 \frac{3}{4}$ "
- Stove height: $25 \frac{3}{8}$ "
- Label: TOP EXHAUST (pointing to the upper part of the stove area)

INTAKE

Technical drawing of a cabinet layout. The overall width is 224". A section on the right is 37" wide and is labeled "SIDE SUPPLY". The height of the upper section is 61", and the height of the lower section is 52 3/16". The drawing shows a long cabinet with multiple compartments, including a large open space, a smaller compartment with a door, and a section with a "SIDE SUPPLY" label. The bottom of the cabinet features a series of mounting brackets.

TOP EXHAUST WILL CHANGE SIDE LOCATION BASED ON ACCESS SIDE SELECTION

ALL DIMENSIONS ARE IN INCHES
TOLERANCE $\pm 1/8"$

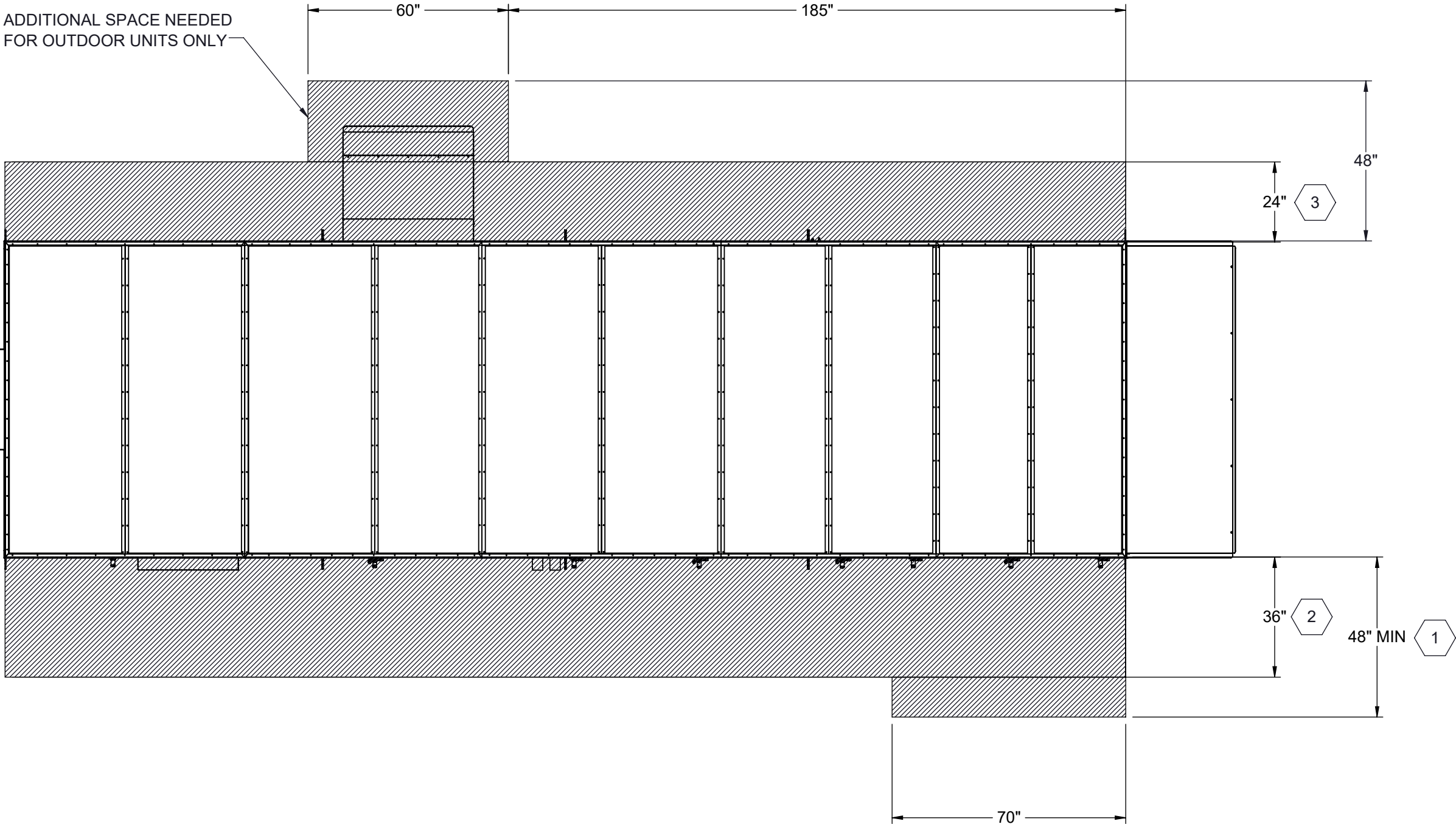
The diagram shows two orthographic projections. On the left is a cylinder, represented by a circle with a vertical centerline and a horizontal line through its center. On the right is a truncated cone, represented by a trapezoid with a vertical centerline and a horizontal line through its center.

Part weight

Scale	NTS
-------	-----



N120 W18485 FREISTADT RD
GERMANTOWN, WI 53022
Tel: (262) 946-7400
Fax: (262) 946-7401

Drawing Number	G1000-106
----------------	-----------



- 1 96" RECOMMENDED FOR FILTER ACCESS.
- 2 120" CLEARANCE ON ACCESS SIDE RECOMMENDED FOR FAN AND COIL SERVICE
- 3 REQUIRED FOR ASSEMBLY OF SECTIONED UNITS ONLY

NOTES:
REFER TO SHEET 1 FOR GENERAL NOTES
LEFT HAND ACCESS SHOWN IN ALL VIEWS
RIGHT HAND ACCESS OPTIONS LOCATED WITH SAME DIMENSIONS ON OPPOSITE SIDE UNLESS OTHERWISE SPECIFIED

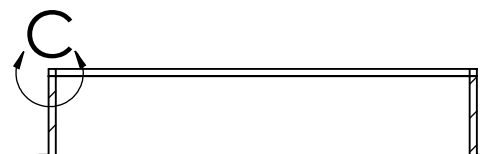
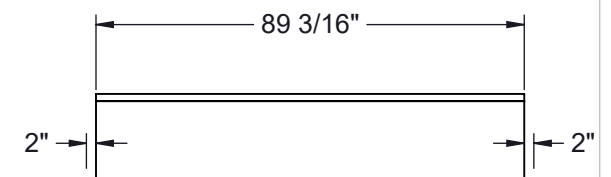
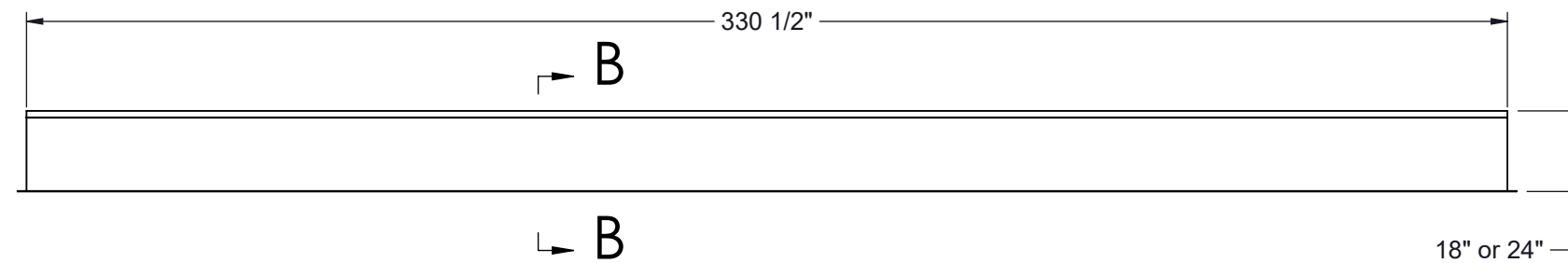
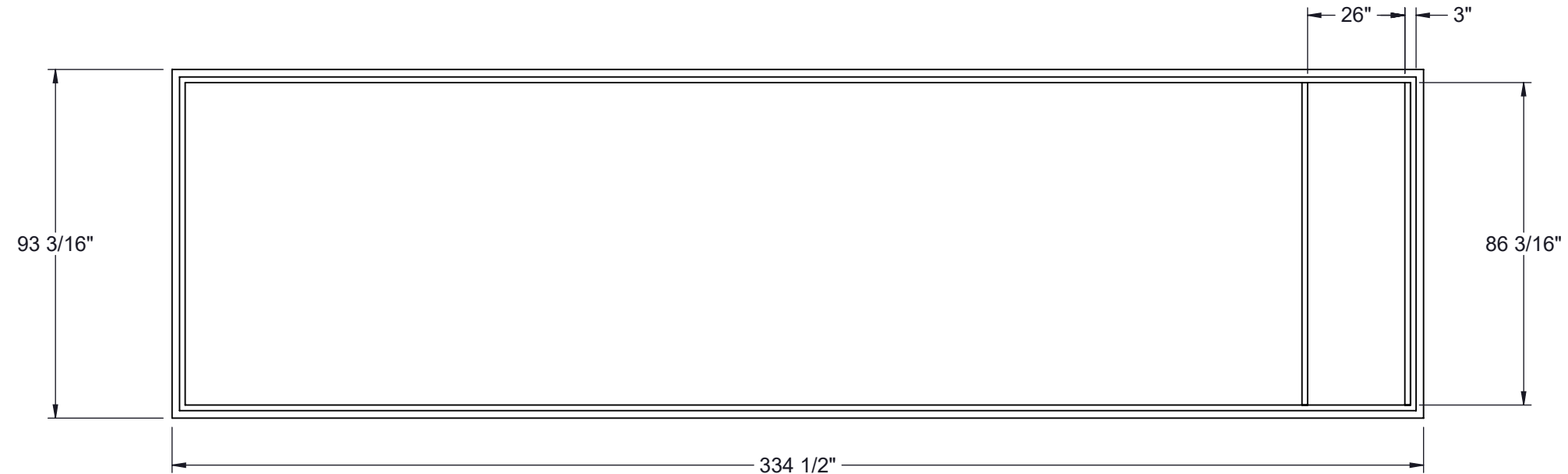
Desert Aire has a policy of continuous product and quality improvement. Specifications and dimensions are subject to change without notice. This drawing and information contained herein are the exclusive property of the Desert Aire Corporation. Any use detrimental to the interests of Desert Aire is prohibited.		All Dimensions in Inches All Angles 90° All outside corners 0.125" fillet Unless Otherwise Specified		Tolerance Unless Otherwise Specified X.X ±.125 X.XX ±.060 X.XXX ±.030 Angles ±1°		 N120 W18485 FREISTADT RD GERMANTOWN, WI 53022 Tel: (262) 946-7400 Fax: (262) 946-7401	
ALL DIMENSIONS ARE IN INCHES TOLERANCE ± 1/8"		 Third Angle Projection		Drawn	Date Released	Description	
				ASV	1/19/2018	SP 40-50 TON SPLIT HWC	
		Part weight		Sheet	5/9	Page Title	
				Scale	NTS	Rev.	Drawing Number
						1	G1000-106

G1000-106

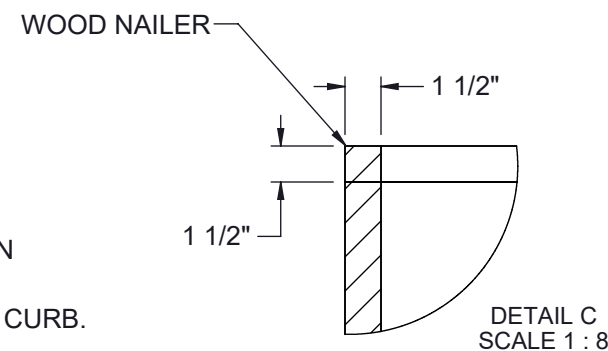
NOTES:
REFER TO SHEET 1 FOR GENERAL NOTES

1. 14 GA GALVANIZED STEEL CONSTRUCTION
2. PRIME PAINTED AFTER FABRICATION
3. PRESSURE TREATED WOOD NAILERS
4. 1-1/2" THICK 3LB/FT^3 FIBERGLASS PERIMETER INSULATION
5. INTERNAL ANGLE REINFORCEMENT
6. CURB TO BE SHIPPED KNOCKED DOWN

UNIT TON	18" CURB	24" CURB
45-50	CB-50NCNN-18	CB-50NCNN-24



SECTION B-B



NUMBER AND LOCATION OF CROSS SUPPORTS IS DEPENDANT UPON THE GUAGE OF MATERIAL USED TO CONSTRUCT THE CURB, DUCT SUPPORT CONFIGURATION LENGTH OF CURB, AND WIDTH OF CURB. INSTALLATION INSTRUCTIONS INCLUDED WITH CURB SHIPMENT INDICATE THE REQUIRED POSITION FOR FIELD ASSEMBLED CURBS.

Desert Aire has a policy of continuous product and quality improvement. Specifications and dimensions are subject to change without notice. This drawing and information contained herein are the exclusive property of the Desert Aire Corporation. Any use detrimental to the interests of Desert Aire is prohibited.

ALL DIMENSIONS ARE IN INCHES
TOLERANCE $\pm 1/8"$

All Dimensions in Inches
All Angles 90°
All outside corners 0.125" fillet
Unless Otherwise Specified



Third Angle Projection

Part weight

Tolerance Unless Otherwise Specified	
X.X	$\pm .125$
X.XX	$\pm .060$
X.XXX	$\pm .030$
Angles	$\pm 1^{\circ}$

Drawn ASV

Date Released
1/19/2018

Sheet 6/9

Scale

NTS

Rev.	1
------	---



N120 W18485 FREISTADT RD
GERMANTOWN, WI 53022
Tel: (262) 946-7400
Fax: (262) 946-7401

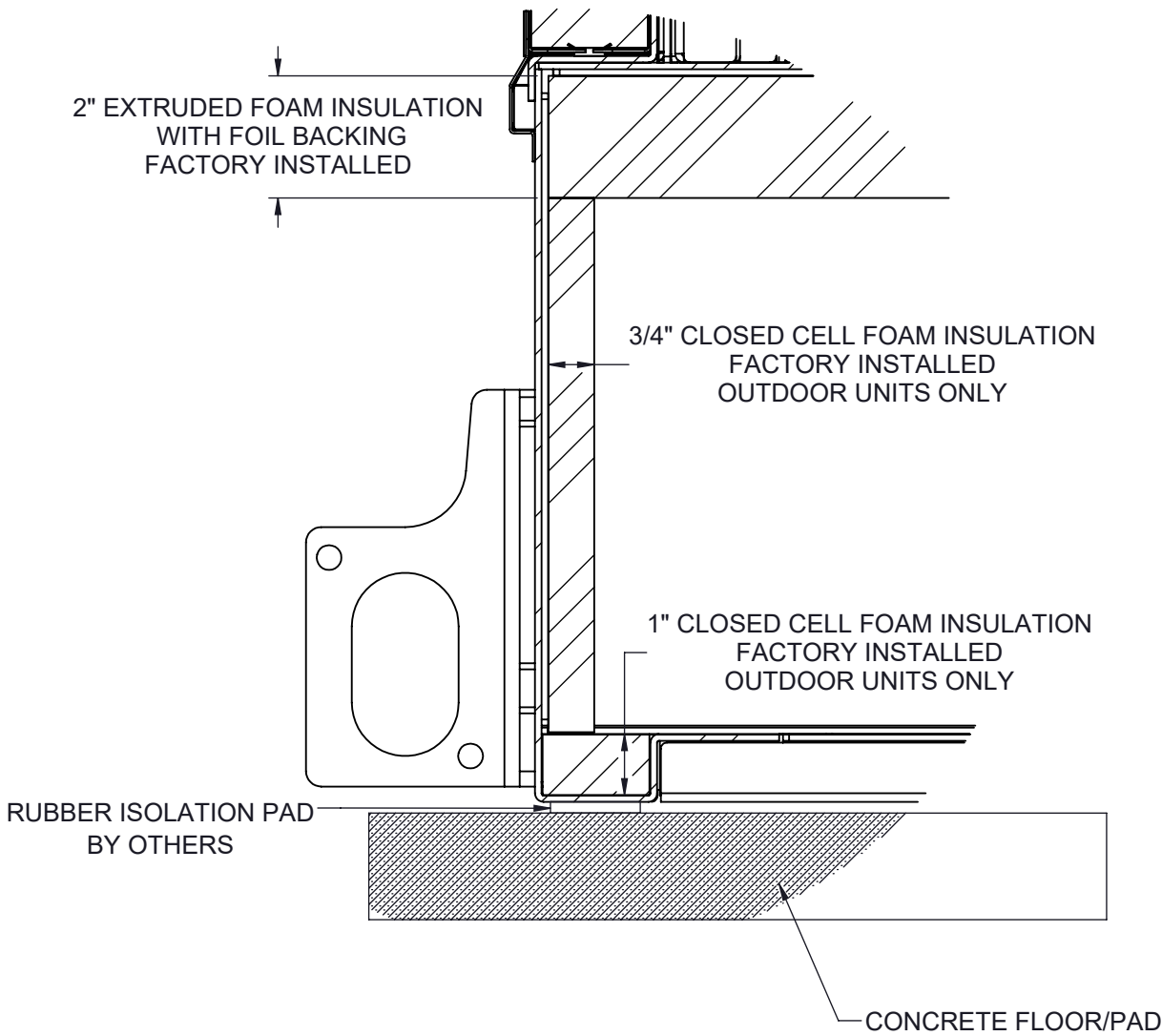
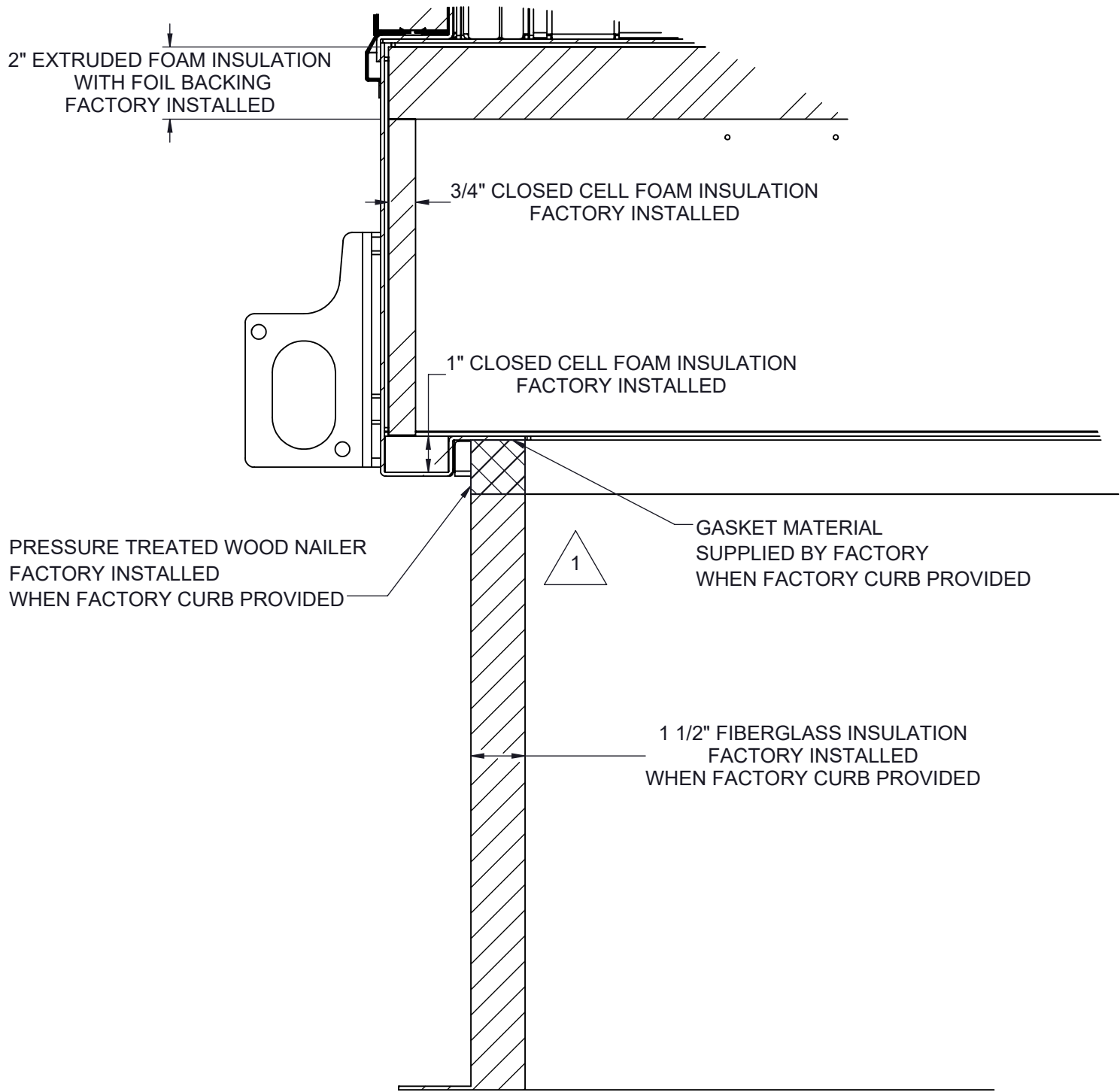
Description	SP 40-50 TON SPLIT HWC
-------------	------------------------

Page Title	CURB DETAIL GA
------------	----------------

Drawing Number	G1000-106
----------------	-----------

CURB MOUNT

PAD MOUNT



1 ALL EXPOSED METAL TO BE SPRAY FOAM INSULATION AFTER INSTALLATION

NOTES:
REFER TO SHEET 1 FOR GENERAL NOTES
SEE SHEET 6 NOTES FOR CURB SPECIFICATIONS

Desert Aire has a policy of continuous product and quality improvement. Specifications and dimensions are subject to change without notice. This drawing and information contained herein are the exclusive property of the Desert Aire Corporation. Any use detrimental to the interests of Desert Aire is prohibited.

ALL DIMENSIONS ARE IN INCHES
TOLERANCE $\pm 1/8"$

All Dimensions in Inches
All Angles 90°
All outside corners 0.125" fillet
Unless Otherwise Specified



Third Angle Projection

Part weight

Tolerance Unless
Otherwise Specified
X.X $\pm .125$
X.XX $\pm .060$
X.XXX $\pm .030$
Angles $\pm 1^\circ$

Drawn
ASV
Date Released
1/19/2018

Sheet
7/9

Scale
NTS



N120 W18485 FREISTADT RD
GERMANTOWN, WI 53022
Tel: (262) 946-7400
Fax: (262) 946-7401

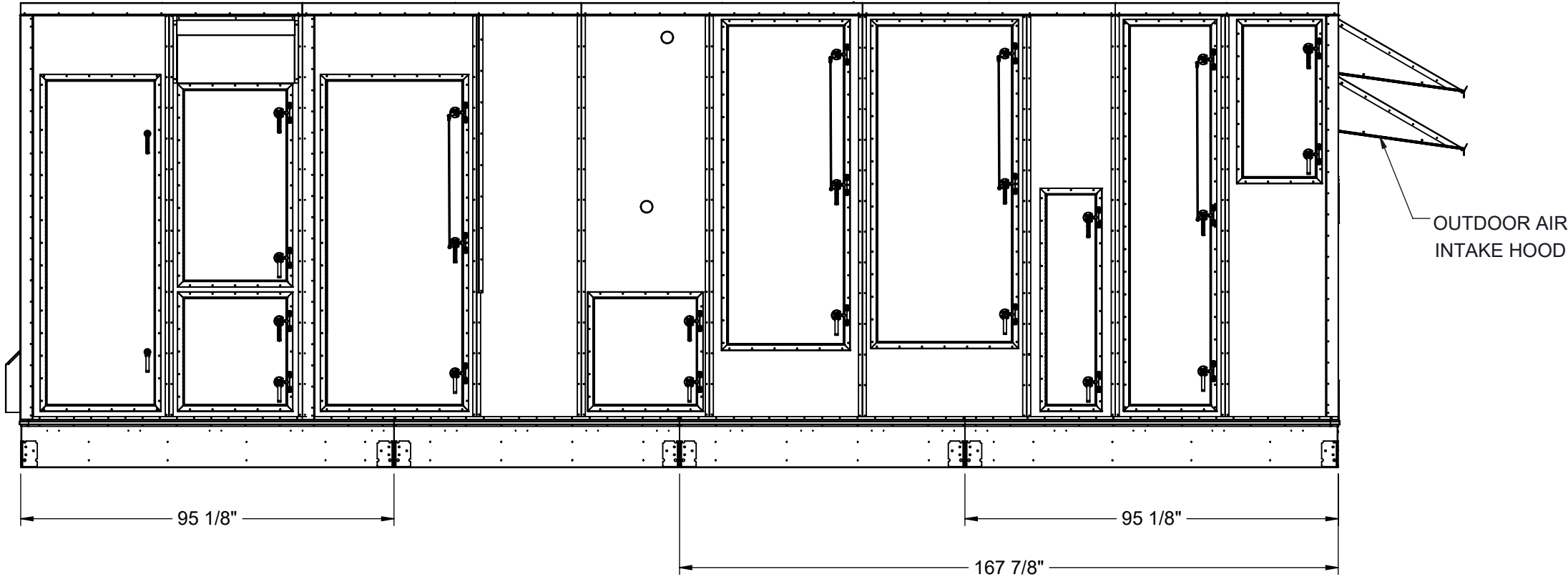
Description
SP 40-50 TON SPLIT HWC

Page Title
MOUNTING DETAILS GA

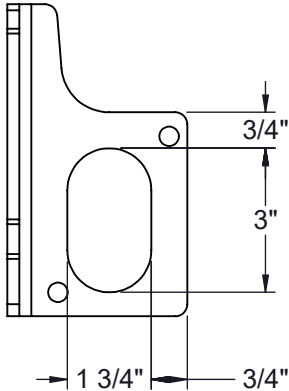
Drawing Number
G1000-106

SHIP LOOSE ITEMS
EXHAUST HOOD

DA PART NO	DESCRIPTION	QTY
HOOD	EXHAUST ASSEMBLY	1
807-023	SCREW #8-18X1/2 SS	36
990-105	CAULK WHITE	1



LUG DETAIL



NOTES:
REFER TO SHEET 1 FOR GENERAL NOTES AND HOOD DETAILS

Desert Aire has a policy of continuous product and quality improvement. Specifications and dimensions are subject to change without notice. This drawing and information contained herein are the exclusive property of the Desert Aire Corporation. Any use detrimental to the interests of Desert Aire is prohibited.

ALL DIMENSIONS ARE IN INCHES
TOLERANCE $\pm 1/8"$

All Dimensions in Inches
All Angles 90°
All outside corners 0.125" fillet
Unless Otherwise Specified

Third Angle Projection

Part weight

Tolerance Unless Otherwise Specified
X.X $\pm .125$
X.XX $\pm .060$
X.XXX $\pm .030$
Angles $\pm 1^\circ$

Drawn ASV	Date Released 1/19/2018	Description SP 40-50 TON SPLIT HWC
Sheet	8/9	Page Title SHIPPING/LIFTING DETAILS GA
Scale NTS	Rev. 1	Drawing Number G1000-106

**DESERT
AIRE**

N120 W18485 FREISTADT RD
GERMANTOWN, WI 53022
Tel: (262) 946-7400
Fax: (262) 946-7401

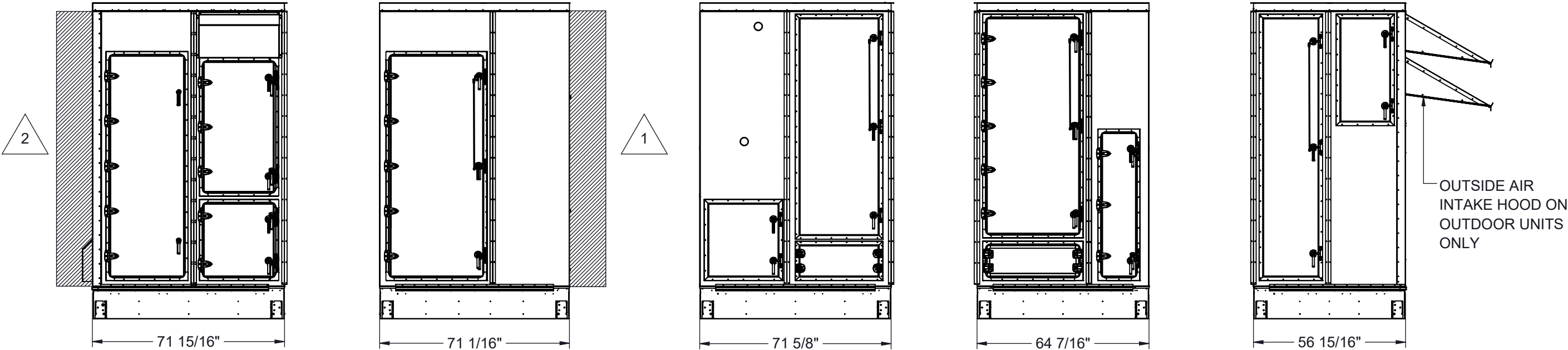
SHIP LOOSE ITEMS
EXHAUST HOOD

DA PART NO	DESCRIPTION	QTY
HOOD	EXHAUST ASSEMBLY	1
807-023	SCREW #8-18X1/2 SS	36
990-105	CAULK WHITE	1

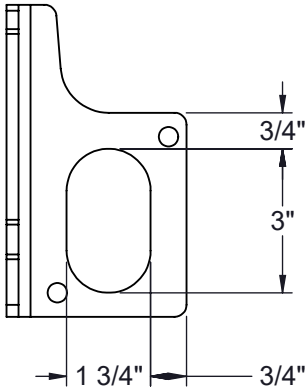
SHIP LOOSE ITEMS
SECTION ITEMS

DA PART NO	DESCRIPTION	QTY
807-007	BOLT 3/8-16X1 SS	16
807-008	WASHER 3/8 FLAT SS	16
807-009	WASHER LOCK SPLIT 3/8 SS	16
807-010	NUT 3/8-16 SS	16
807-023	SCREW #8-18X1/2 SS	688
807-223	SCREW #10-32X1/2 MACHINE HEX	16
950-089	TAPE SEAM SEALER 2"	120 FT (3 ROLLS)
950-090	TAPE SEAM SEALER 4"	15 FT
990-105	CAULK WHITE	8
352-098-040	BASE Z CVR SIDE, MID SEC	8
STRIPS	2.5 X 103" METAL SIDE STRIPS	8
STRIPS	2.5 X 92 1/2" METAL TOP STRIPS	4
STRIPS	1" X 3" X 24" METAL CORNER STRIPS	8

SHIPPING AND LIFTING DETAILS FOR MULTI-SECTION CONSTRUCTION OPTION ONLY



LUG DETAIL



1 BACKDRAFT DAMPER OPTION ADDS AN ADDITIONAL 9" TO FAN SECTION LENGTH

2 REMOTE CONDENSER/WATER CONNECTIONS WILL ADD AN ADDITIONAL MAXIMUM OF 8" TO LENGTH

NOTES:
REFER TO SHEET 1 FOR GENERAL NOTES AND HOOD DETAILS
UNIT SHIPPED IN SIX SECTIONS SEE I/O MANUAL FOR ASSEMBLY DETAILS

Desert Aire has a policy of continuous product and quality improvement. Specifications and dimensions are subject to change without notice. This drawing and information contained herein are the exclusive property of the Desert Aire Corporation. Any use detrimental to the interests of Desert Aire is prohibited.

All Dimensions in Inches
All Angles 90°
All outside corners 0.125" fillet
Unless Otherwise Specified

Tolerance Unless
Otherwise Specified
X.X ±.125
X.XX ±.060
X.XXX ±.030
Angles ±1°



N120 W18485 FREISTADT RD
GERMANTOWN, WI 53022
Tel: (262) 946-7400
Fax: (262) 946-7401



Third Angle Projection

Part weight

Drawn
ASV
Date Released
1/19/2018

Sheet
9/9

Scale
NTS

Description
SP 40-50 TON SPLIT HWC

Page Title
SECTIONED LIFTING DETAILS GA

Drawing Number
G1000-106