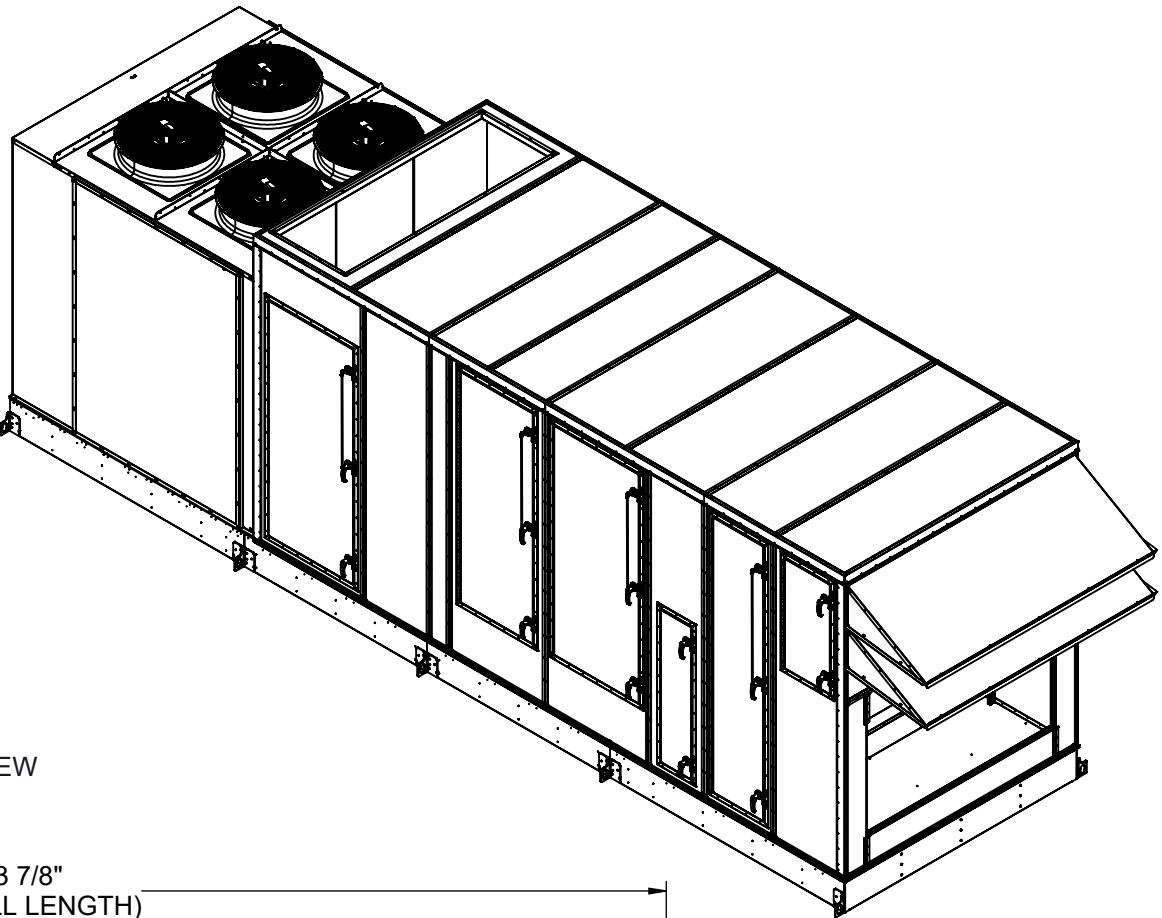
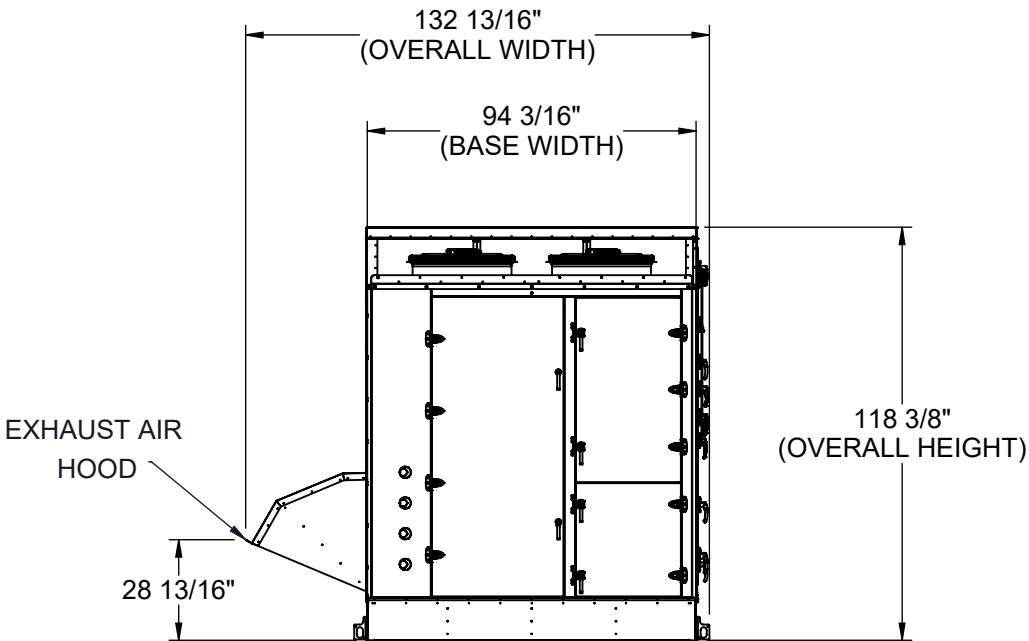


GENERAL NOTES FOR APPLICABLE SHEETS:

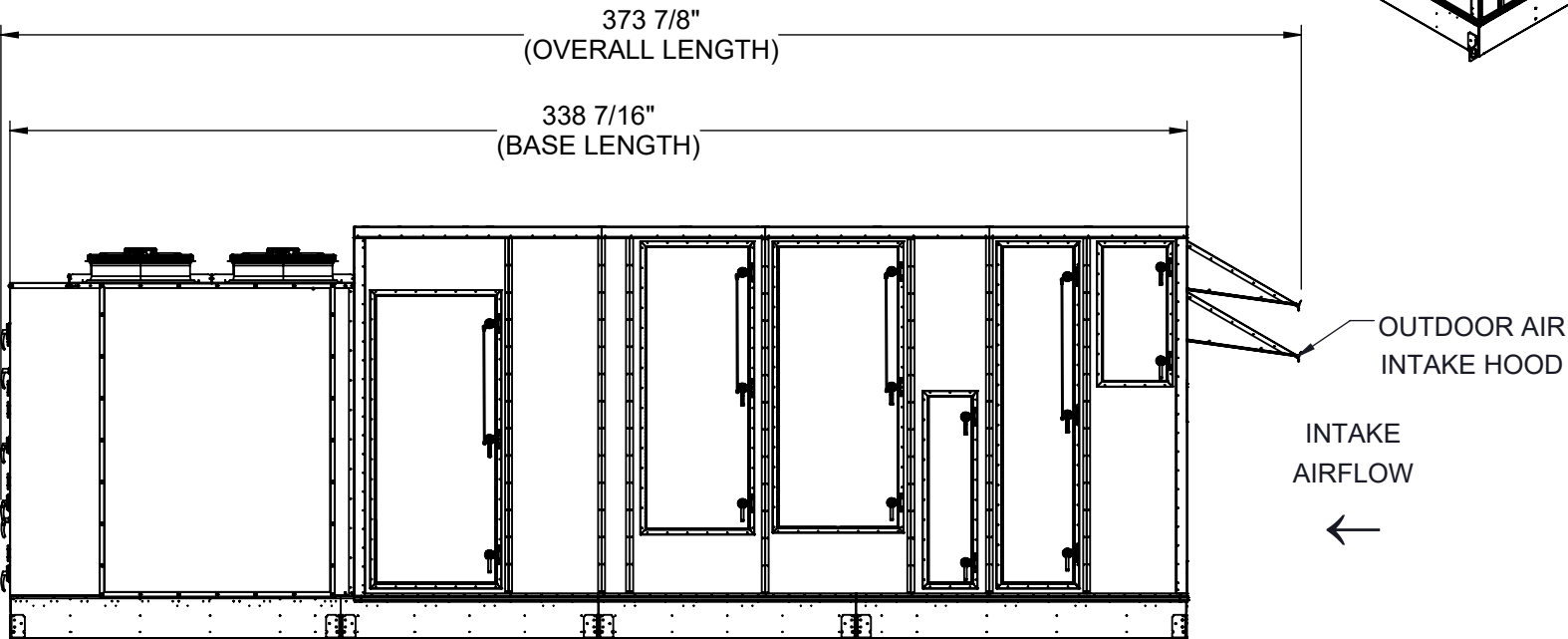
LEFT HAND ACCESS SHOWN IN ALL VIEWS  
RIGHT HAND ACCESS OPTIONS LOCATED WITH SAME DIMENSIONS ON OPPOSITE SIDE UNLESS OTHERWISE SPECIFIED  
WEIGHTS SHOWN REFLECT FULLY OPTIONED ESTIMATED UNIT WEIGHT



BACK VIEW



LEFT SIDE VIEW



UNIT SIZE	ESTIMATED WEIGHT (lbs.)
45-50 TONS	16500

Desert Aire has a policy of continuous product and quality improvement. Specifications and dimensions are subject to change without notice. This drawing and information contained herein are the exclusive property of the Desert Aire Corporation. Any use detrimental to the interests of Desert Aire is prohibited.

ALL DIMENSIONS ARE IN INCHES  
TOLERANCE  $\pm 1/8"$

All Dimensions in Inches  
All Angles 90°  
All outside corners 0.125" fillet  
Unless Otherwise Specified



Third Angle Projection

Part weight

Tolerance Unless  
Otherwise Specified  
X.X  $\pm .125$   
X.XX  $\pm .060$   
X.XXX  $\pm .030$   
Angles  $\pm 1^\circ$

Drawn  
ASV  
Date Released  
1/19/2018

Sheet  
1/8

Scale  
NTS



N120 W18485 FREISTADT RD  
GERMANTOWN, WI 53022  
Tel: (262) 946-7400  
Fax: (262) 946-7401

Description  
SP 40-50 TON PKG

Page Title  
GENERAL ARRANGEMENT

Drawing Number  
G1000-104

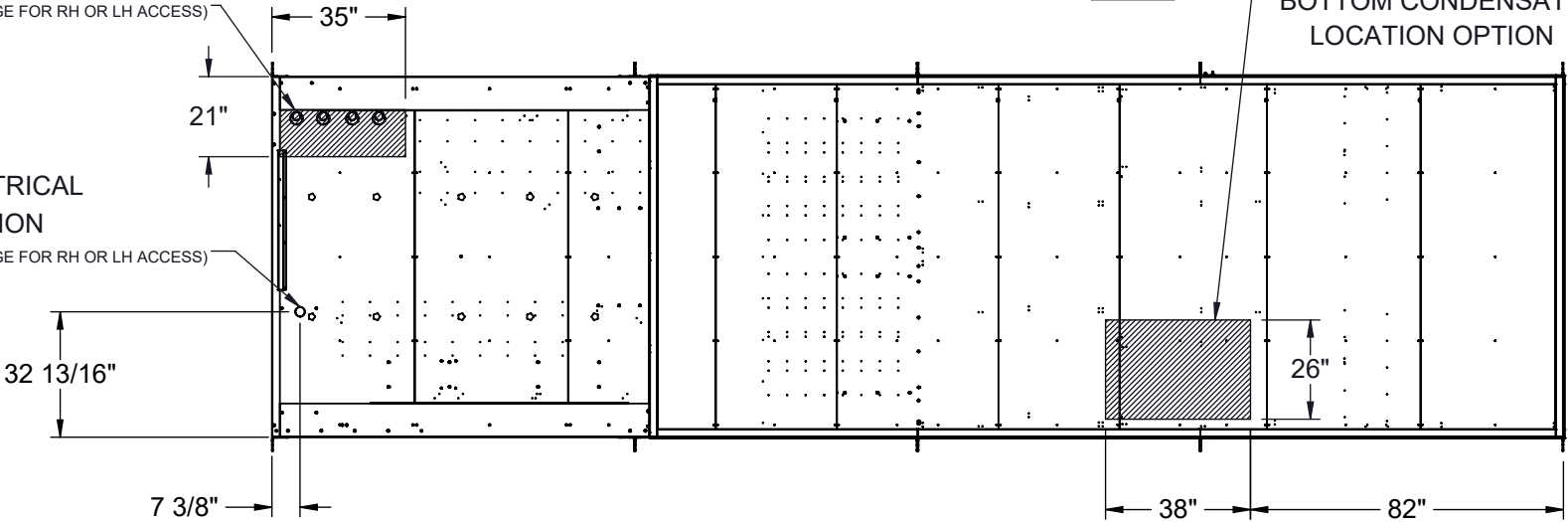
CUSTOMER CONNECTION LINE SIZE (in.)		
UNIT SIZE	45 TONS	50 TONS
CONDENSATE (PVC)	1 1/2	1 1/2
POOL WATER LINE CIRCUIT A (CPVC)	1	2
POOL WATER LINE CIRCUIT B (CPVC)	2	2

BOTTOM POOL WATER  
CONNECTION LOCATION OPTION  
(NO ORIENTATION CHANGE FOR RH OR LH ACCESS)

BOTTOM ELECTRICAL  
LOCATION OPTION  
(NO ORIENTATION CHANGE FOR RH OR LH ACCESS)

BOTTOM CUSTOMER CONNECTIONS  
(LEFT HAND ACCESS SHOWN)  
(VIEWED FROM ABOVE)

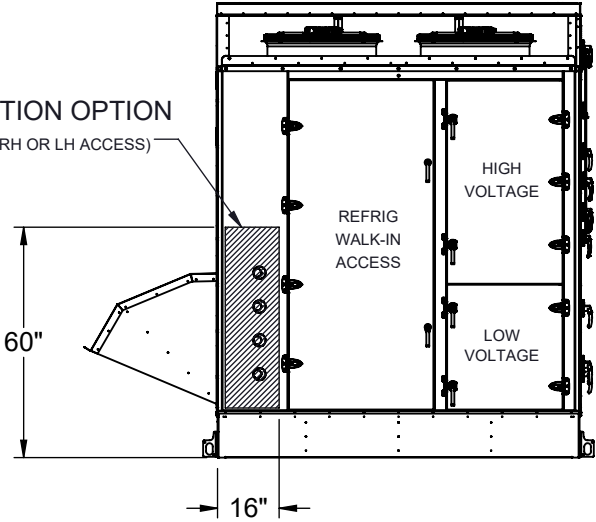
BOTTOM CONDENSATE  
LOCATION OPTION



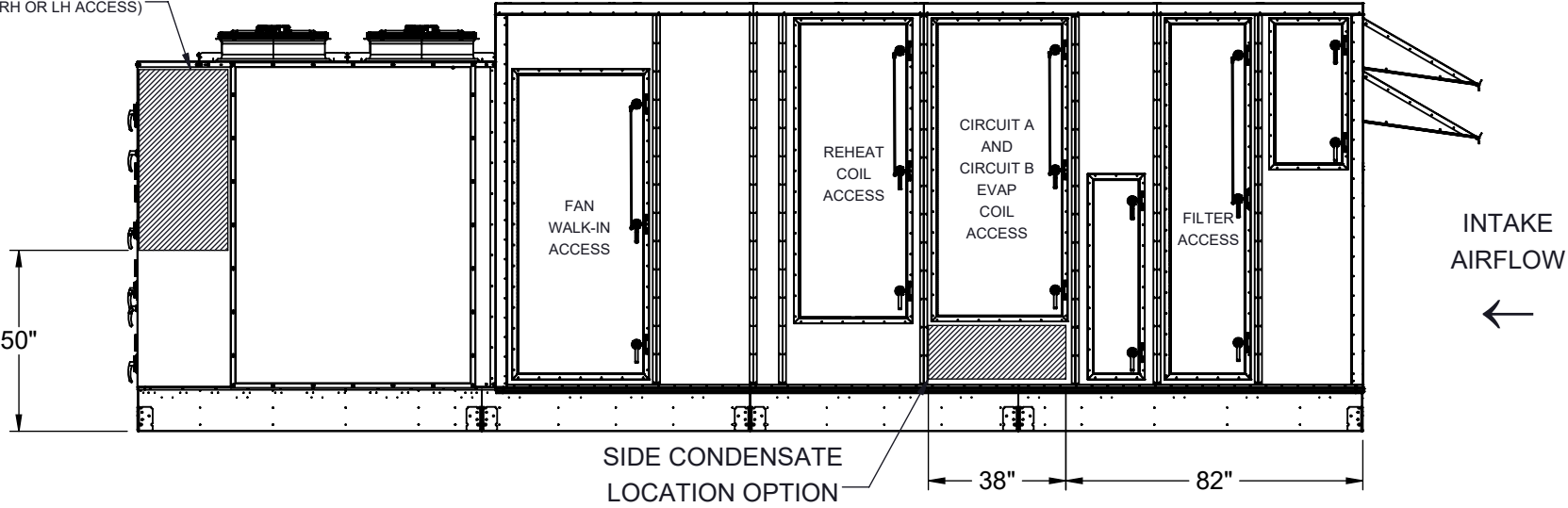
BACK CONNECTIONS VIEW  
(NO ORIENTATION CHANGE FOR RH OR LH ACCESS)

LEFT SIDE CONNECTION VIEW  
(LEFT HAND ACCESS SHOWN)

BACK POOL WATER  
CONNECTION LOCATION OPTION  
(NO ORIENTATION CHANGE FOR RH OR LH ACCESS)



SIDE ELECTRICAL  
CONNECTION LOCATION OPTION  
(NO ORIENTATION CHANGE FOR RH OR LH ACCESS)



NOTES:  
REFER TO SHEET 1 FOR GENERAL NOTES  
LEFT HAND ACCESS SHOWN IN ALL VIEWS  
RIGHT HAND ACCESS OPTIONS LOCATED WITH SAME DIMENSIONS ON OPPOSITE SIDE UNLESS OTHERWISE SPECIFIED



FILTER INFORMATION						
UNIT SIZE	OA QTY	OA SIZE	REPLACEMENT PART NUMBER	RA QTY	RA SIZE	REPLACEMENT PART NUMBER
45-50 TONS	10	18 X 24 X 4	870-056	10	18 X 24 X 4	870-056

Desert Aire has a policy of continuous product and quality improvement. Specifications and dimensions are subject to change without notice. This drawing and information contained herein are the exclusive property of the Desert Aire Corporation. Any use detrimental to the interests of Desert Aire is prohibited.

ALL DIMENSIONS ARE IN INCHES  
TOLERANCE  $\pm 1/8"$

All Dimensions in Inches  
All Angles 90°  
All outside corners 0.125" fillet  
Unless Otherwise Specified



Third Angle Projection

Part weight

Tolerance Unless  
Otherwise Specified  
X.X  $\pm .125$   
X.XX  $\pm .060$   
X.XXX  $\pm .030$   
Angles  $\pm 1^\circ$

Drawn  
ASV  
Date Released  
1/19/2018

Sheet  
2/8

Scale  
NTS



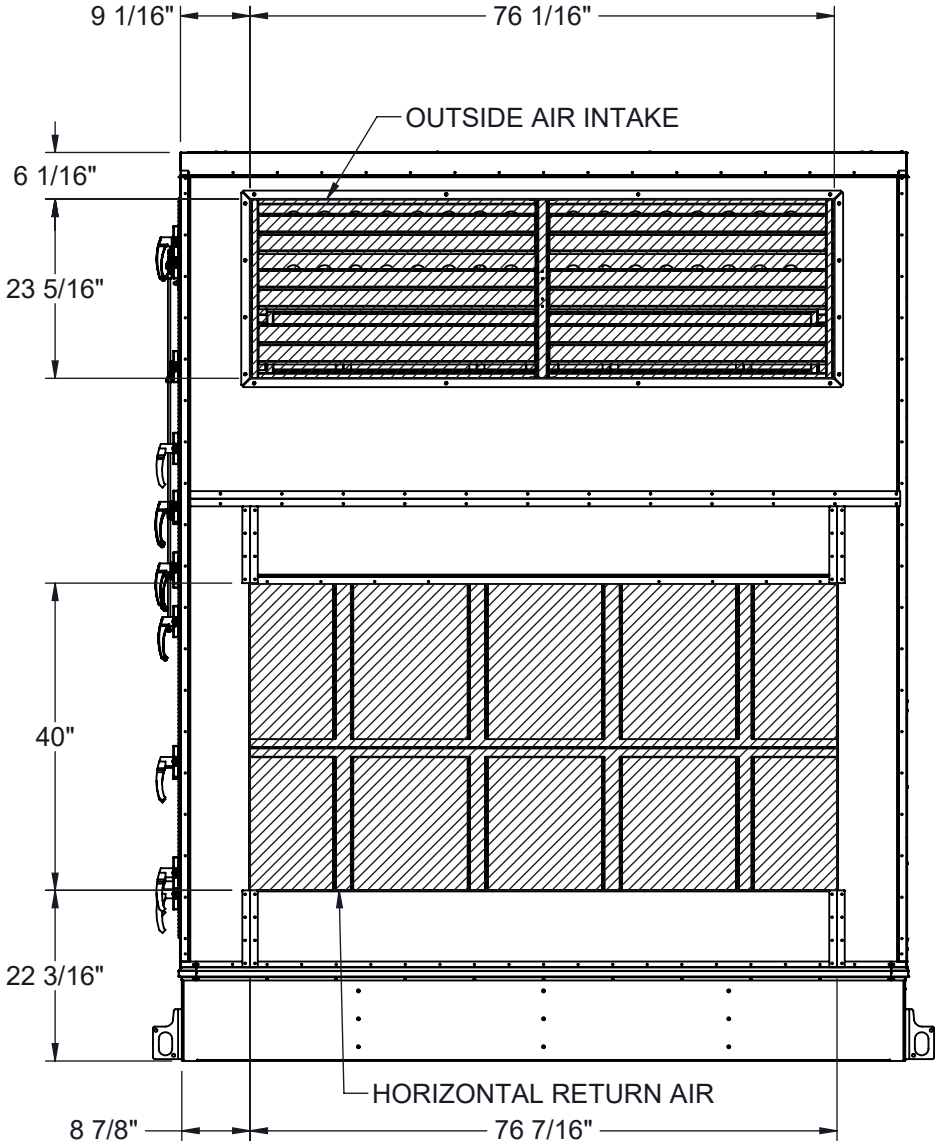
N120 W18485 FREISTADT RD  
GERMANTOWN, WI 53022  
Tel: (262) 946-7400  
Fax: (262) 946-7401

Description  
SP 40-50 TON PKG

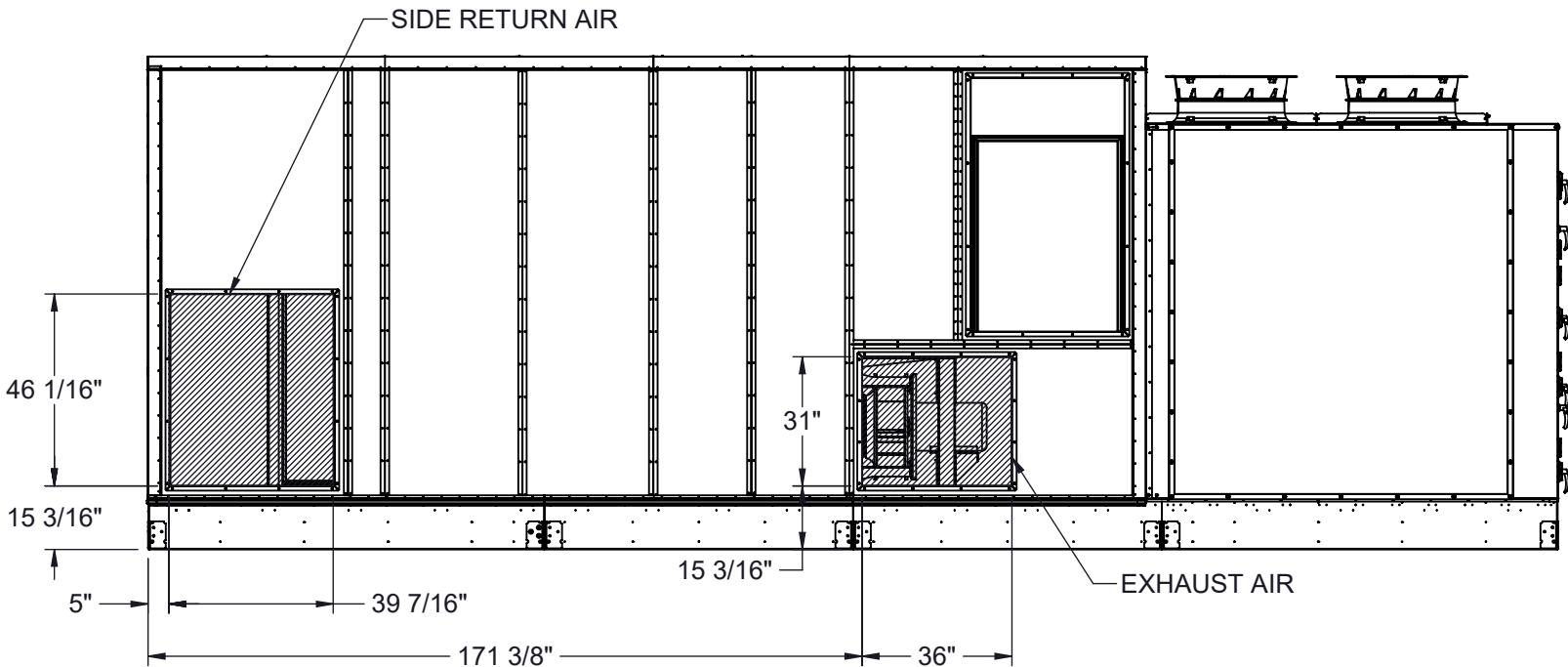
Page Title  
CUSTOMER INTERFACE GA

Drawing Number  
G1000-104

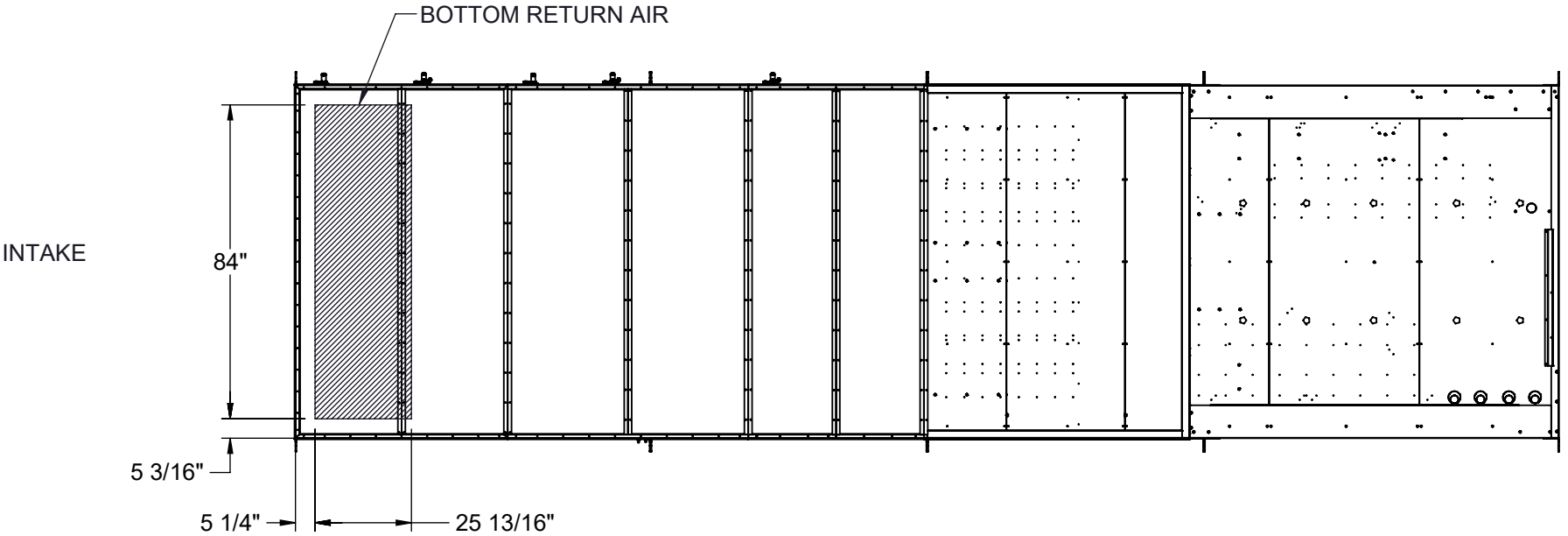
HORIZONTAL RETURN AIR OPTION  
(INTAKE VIEW)



SIDE RETURN AIR OPTION  
(SIDE VIEW)



BOTTOM RETURN AIR OPTION  
(VIEW FROM ABOVE)



NOTES:  
REFER TO SHEET 1 FOR GENERAL NOTES  
HOODS REMOVED FOR CLARITY  
ACCESS SIDE RETURN AIR OPTION WILL SHIFT FILTER SECTION DOORS TO NON-ACCESS SIDE  
OUTSIDE AIR INTAKE LOCATED IN THE SAME POSITION REGARDLESS OF OPTIONS

Desert Aire has a policy of continuous product and quality improvement. Specifications and dimensions are subject to change without notice. This drawing and information contained herein are the exclusive property of the Desert Aire Corporation. Any use detrimental to the interests of Desert Aire is prohibited.

ALL DIMENSIONS ARE IN INCHES  
TOLERANCE  $\pm 1/8"$

All Dimensions in Inches  
All Angles 90°  
All outside corners 0.125" fillet  
Unless Otherwise Specified



Third Angle Projection

Part weight

Tolerance Unless  
Otherwise Specified  
X.X  $\pm .125$   
X.XX  $\pm .060$   
X.XXX  $\pm .030$   
Angles  $\pm 1^\circ$

Drawn  
ASV  
Date Released  
1/19/2018

Sheet  
3/8

Scale  
NTS  
Rev.  
1



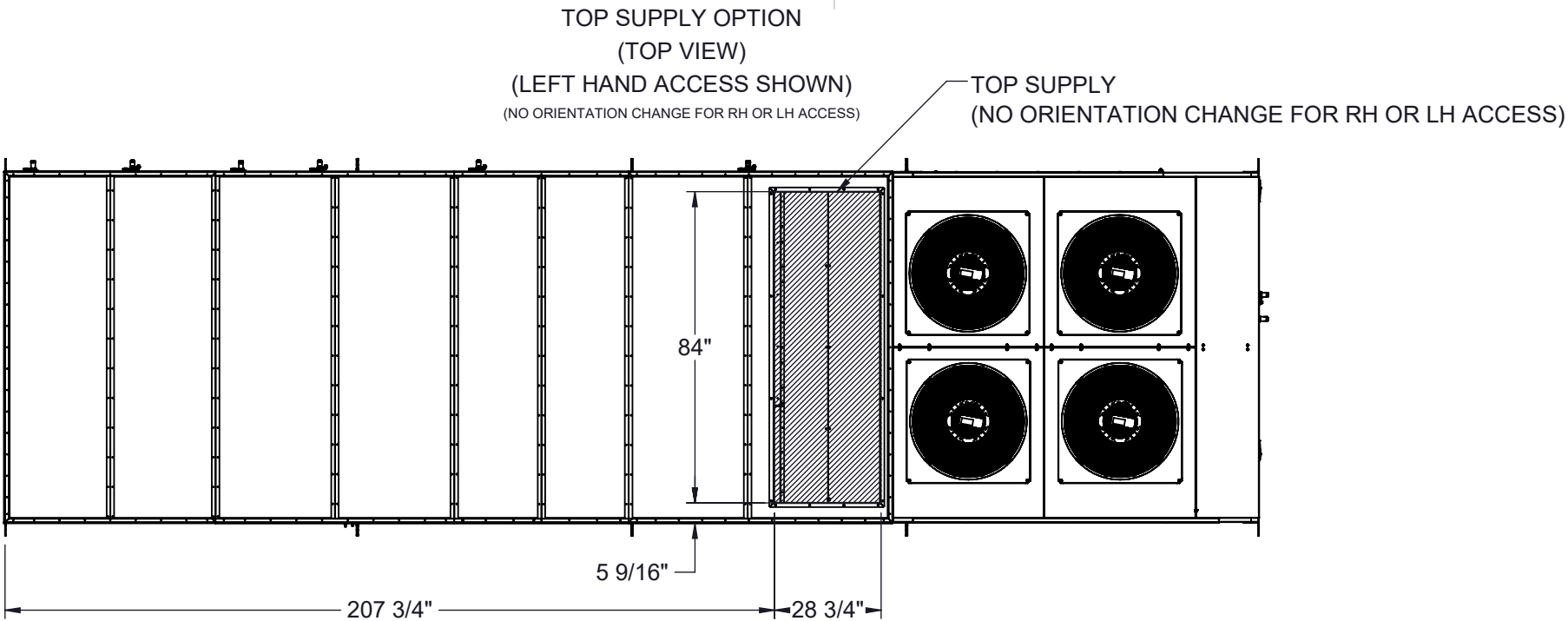
N120 W18485 FREISTADT RD  
GERMANTOWN, WI 53022  
Tel: (262) 946-7400  
Fax: (262) 946-7401

Description  
SP 40-50 TON PKG

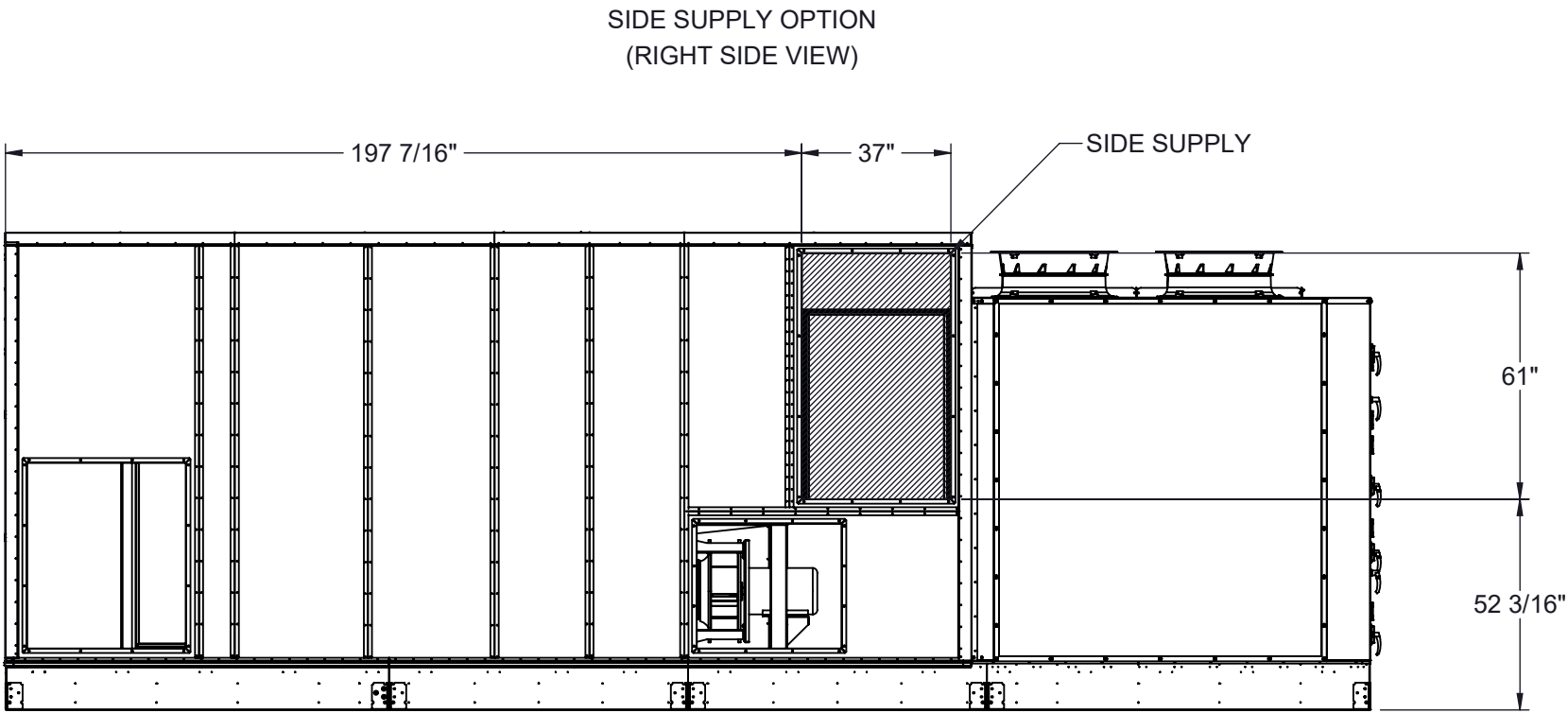
Page Title  
INTAKE OPTIONS GA

Drawing Number  
G1000-104

INTAKE



INTAKE



NOTES:  
REFER TO SHEET 1 FOR GENERAL NOTES  
LEFT HAND ACCESS SHOWN IN ALL VIEWS UNLESS OTHERWISE SPECIFIED  
RIGHT HAND ACCESS OPTIONS LOCATED WITH SAME DIMENSIONS ON OPPOSITE SIDE UNLESS OTHERWISE SPECIFIED  
HOODS REMOVED FOR CLARITY  
ACCESS SIDE SUPPLY AIR OPTION WILL SHIFT FAN SECTION DOORS TO NON-ACCESS SIDE

Desert Aire has a policy of continuous product and quality improvement. Specifications and dimensions are subject to change without notice. This drawing and information contained herein are the exclusive property of the Desert Aire Corporation. Any use detrimental to the interests of Desert Aire is prohibited.

ALL DIMENSIONS ARE IN INCHES  
TOLERANCE  $\pm 1/8"$

All Dimensions in Inches  
All Angles 90°  
All outside corners 0.125" fillet  
Unless Otherwise Specified



Third Angle Projection

Part weight

Tolerance Unless  
Otherwise Specified  
X.X  $\pm .125$   
X.XX  $\pm .060$   
X.XXX  $\pm .030$   
Angles  $\pm 1^\circ$

Drawn  
ASV

Date Released  
1/19/2018

Sheet  
4/8

Scale  
NTS

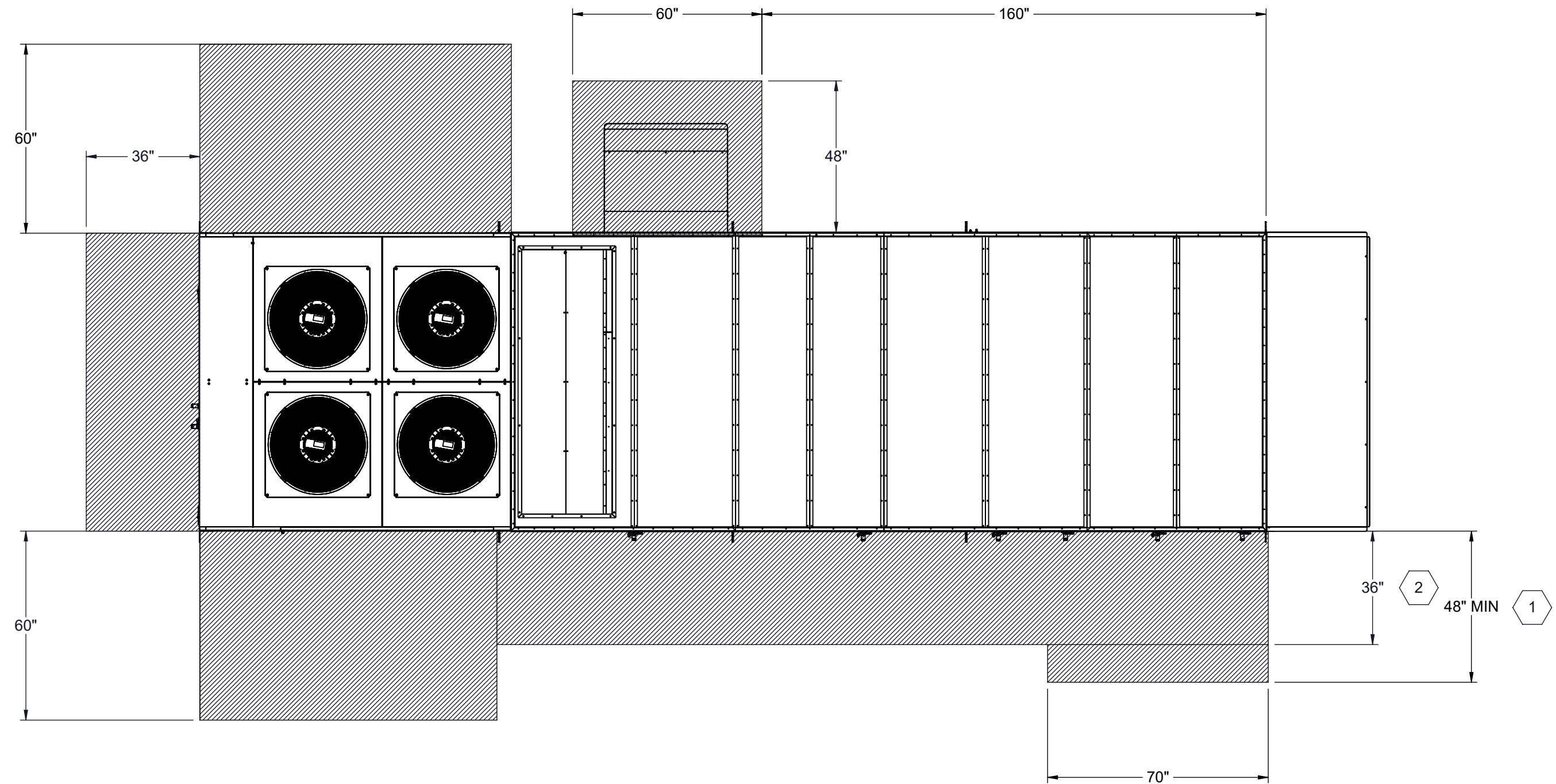


N120 W18485 FREISTADT RD  
GERMANTOWN, WI 53022  
Tel: (262) 946-7400  
Fax: (262) 946-7401

Description  
SP 40-50 TON PKG



Page Title  
DISCHARGE OPTIONS GA

Drawing Number  
G1000-104



- 1 96" RECOMMENDED FOR FILTER ACCESS.
- 2 120" CLEARANCE ON ACCESS SIDE RECOMMENDED FOR FAN AND COIL SERVICE

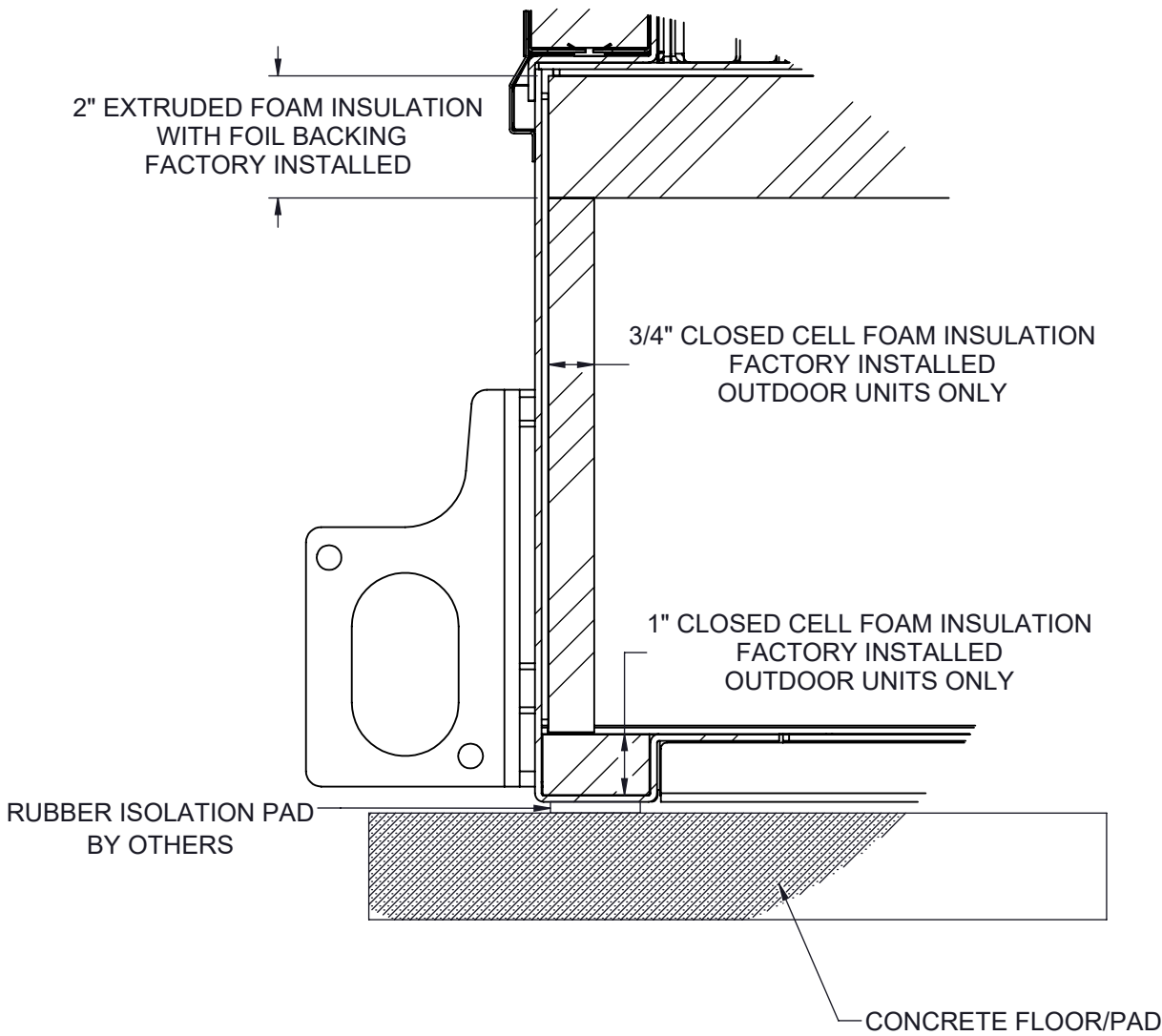
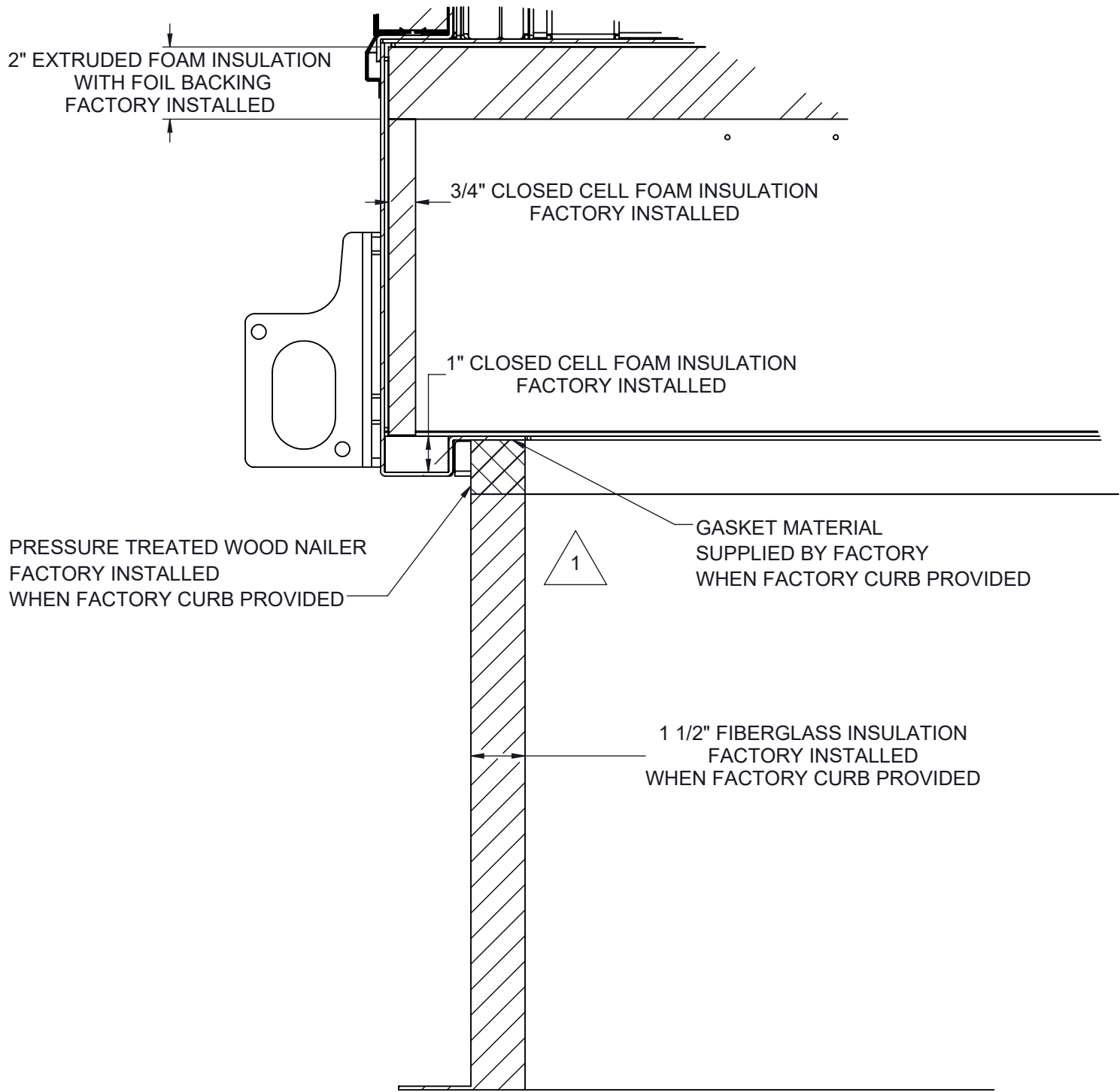
NOTES:  
REFER TO SHEET 1 FOR GENERAL NOTES  
LEFT HAND ACCESS SHOWN IN ALL VIEWS  
RIGHT HAND ACCESS OPTIONS LOCATED WITH SAME DIMENSIONS ON OPPOSITE SIDE UNLESS OTHERWISE SPECIFIED

Desert Aire has a policy of continuous product and quality improvement. Specifications and dimensions are subject to change without notice. This drawing and information contained herein are the exclusive property of the Desert Aire Corporation. Any use detrimental to the interests of Desert Aire is prohibited.		All Dimensions in Inches All Angles 90° All outside corners 0.125" fillet Unless Otherwise Specified		Tolerance Unless Otherwise Specified X.X ±.125 X.XX ±.060 X.XXX ±.030 Angles ±1°		 <div>N120 W18485 FREISTADT RD GERMANTOWN, WI 53022 Tel: (262) 946-7400 Fax: (262) 946-7401</div>	
ALL DIMENSIONS ARE IN INCHES TOLERANCE ± 1/8"		 Third Angle Projection		Drawn ASV	Date Released 1/19/2018	Description SP 40-50 TON PKG	
Part weight				Sheet 5/8		Page Title UNIT CLEARANCE GA	
				Scale NTS	Rev. 1	Drawing Number G1000-104	



CURB MOUNT

PAD MOUNT



1 ALL EXPOSED METAL TO BE SPRAY FOAM INSULATION AFTER INSTALLATION

NOTES:  
REFER TO SHEET 1 FOR GENERAL NOTES  
SEE SHEET 6 NOTES FOR CURB SPECIFICATIONS

Desert Aire has a policy of continuous product and quality improvement. Specifications and dimensions are subject to change without notice. This drawing and information contained herein are the exclusive property of the Desert Aire Corporation. Any use detrimental to the interests of Desert Aire is prohibited.

ALL DIMENSIONS ARE IN INCHES  
TOLERANCE  $\pm 1/8"$

All Dimensions in Inches  
All Angles 90°  
All outside corners 0.125" fillet  
Unless Otherwise Specified



Third Angle Projection

Part weight

Tolerance Unless  
Otherwise Specified  
X.X  $\pm .125$   
X.XX  $\pm .060$   
X.XXX  $\pm .030$   
Angles  $\pm 1^\circ$

Drawn  
ASV  
Date Released  
1/19/2018

Sheet  
7/8

Scale  
NTS



N120 W18485 FREISTADT RD  
GERMANTOWN, WI 53022  
Tel: (262) 946-7400  
Fax: (262) 946-7401

Description  
SP 40-50 TON PKG

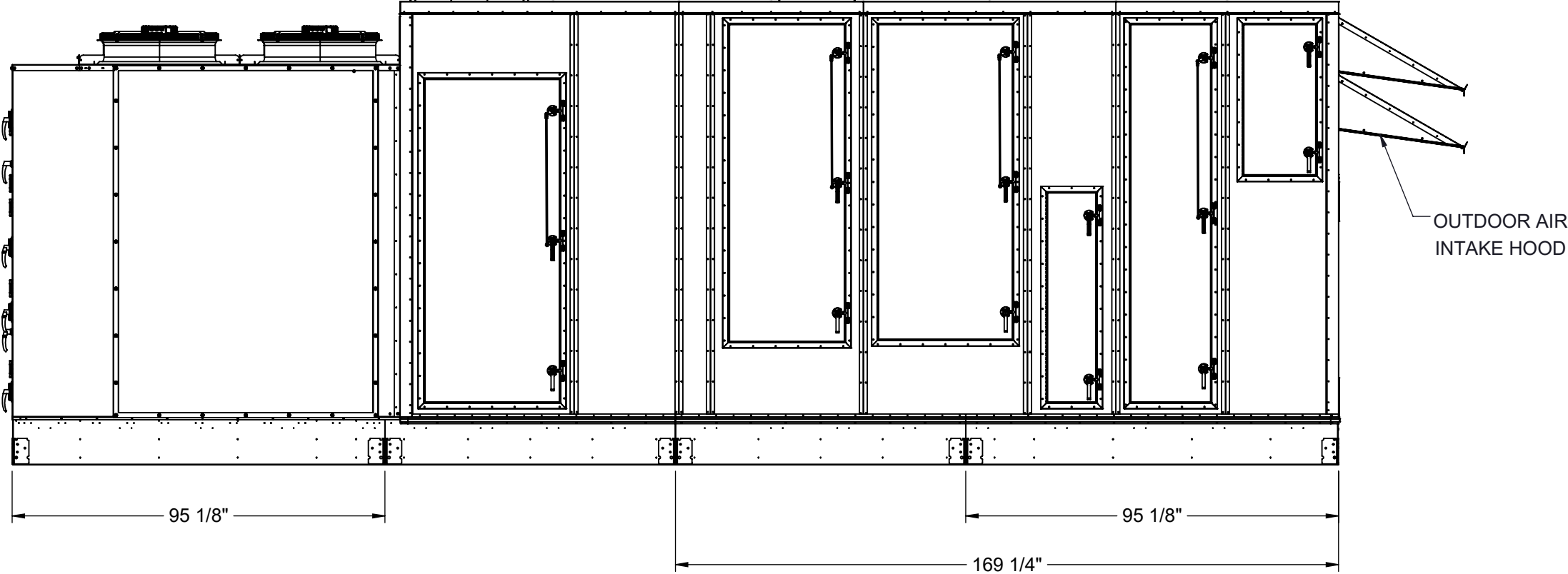
Page Title  
MOUNTING DETAILS GA

Drawing Number  
G1000-104

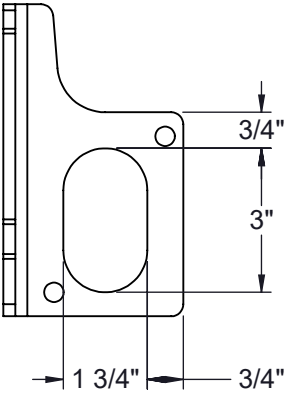


SHIP LOOSE ITEMS  
EXHAUST HOOD

DA PART NO	DESCRIPTION	QTY
HOOD	EXHAUST ASSEMBLY	1
807-023	SCREW #8-18X1/2 SS	36
990-105	CAULK WHITE	1



LUG DETAIL



**NOTES:**  
REFER TO SHEET 1 FOR GENERAL NOTES AND HOOD DETAILS

Desert Aire has a policy of continuous product and quality improvement. Specifications and dimensions are subject to change without notice. This drawing and information contained herein are the exclusive property of the Desert Aire Corporation. Any use detrimental to the interests of Desert Aire is prohibited.

ALL DIMENSIONS ARE IN INCHES  
TOLERANCE  $\pm 1/8"$

All Dimensions in Inches  
All Angles 90°  
All outside corners 0.125" fillet  
Unless Otherwise Specified

Third Angle Projection

Part weight

Tolerance Unless Otherwise Specified  
X.X  $\pm .125$   
X.XX  $\pm .060$   
X.XXX  $\pm .030$   
Angles  $\pm 1^\circ$

Drawn <b>ASV</b>	Date Released <b>1/19/2018</b>
Sheet <b>8/8</b>	Rev. <b>1</b>
Scale <b>NTS</b>	

N120 W18485 FREISTADT RD  
GERMANTOWN, WI 53022  
Tel: (262) 946-7400  
Fax: (262) 946-7401

Description <b>SP 40-50 TON PKG</b>
Page Title <b>SHIPPING/LIFTING DETAILS GA</b>
Drawing Number <b>G1000-104</b>