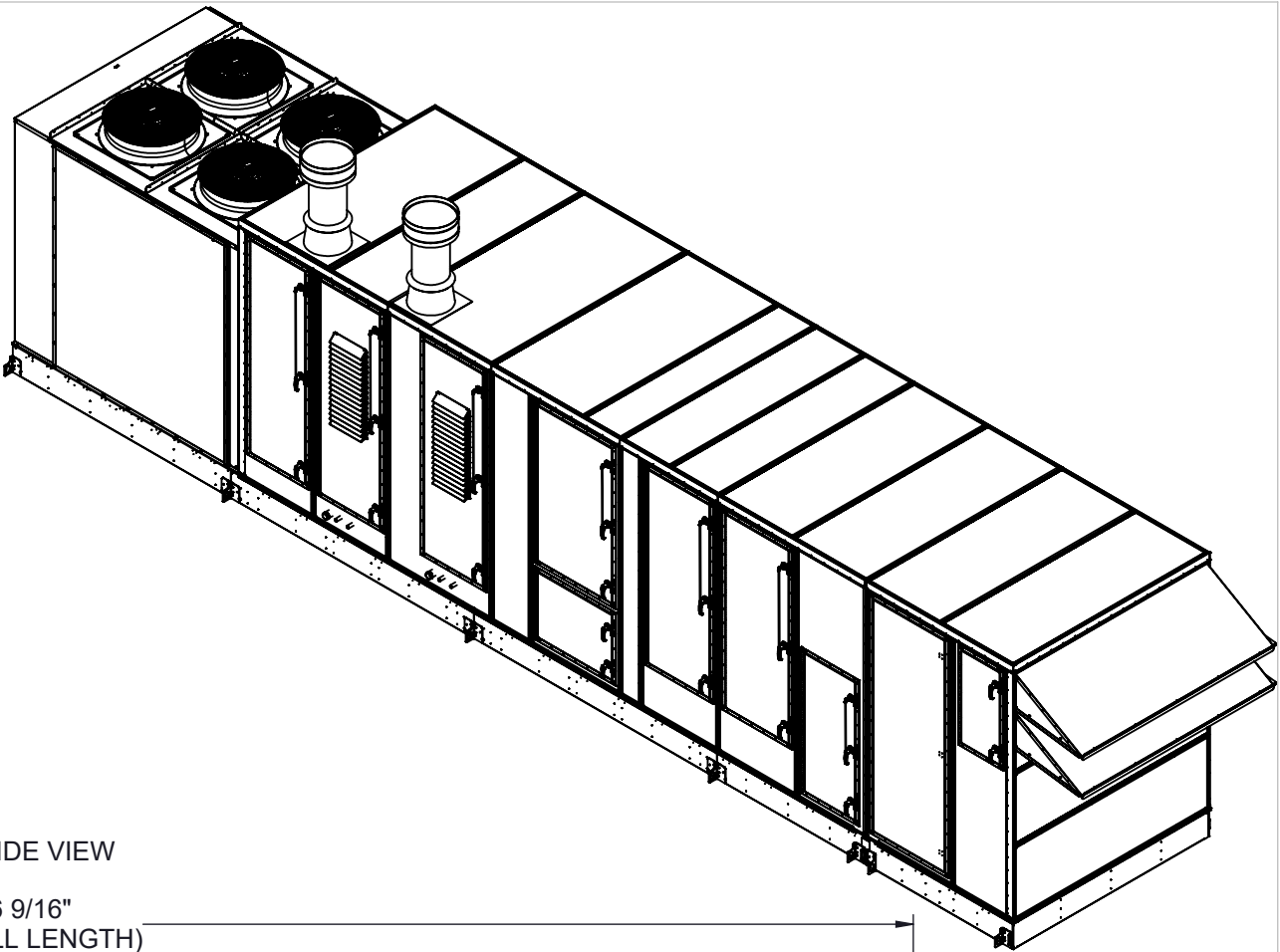
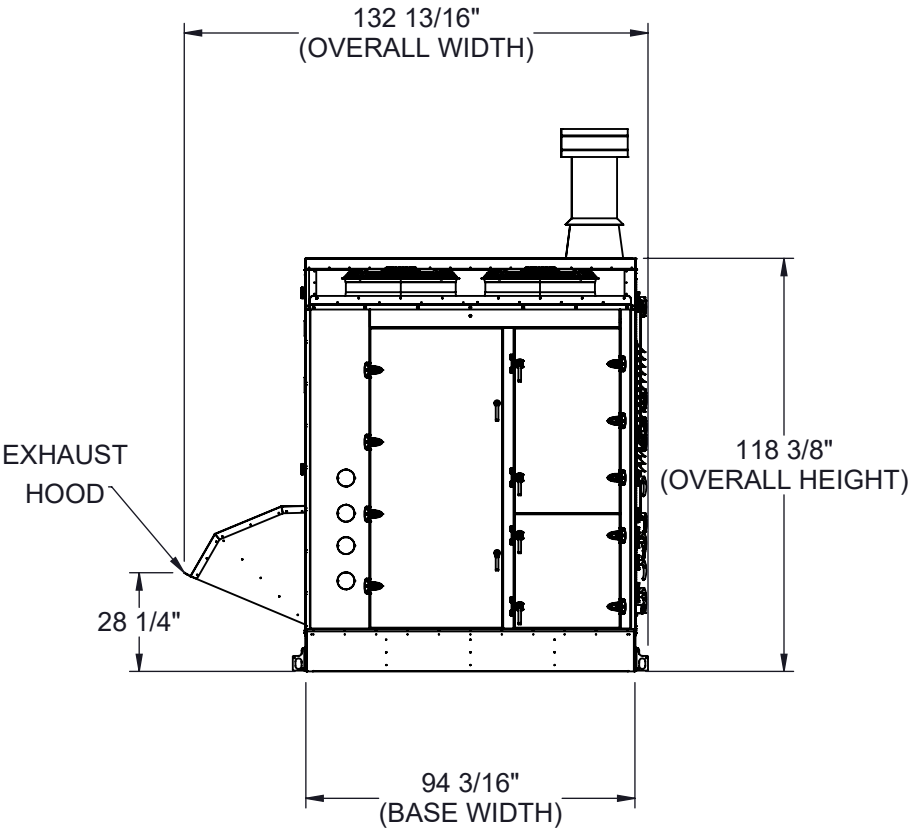


GENERAL NOTES FOR APPLICABLE SHEETS:

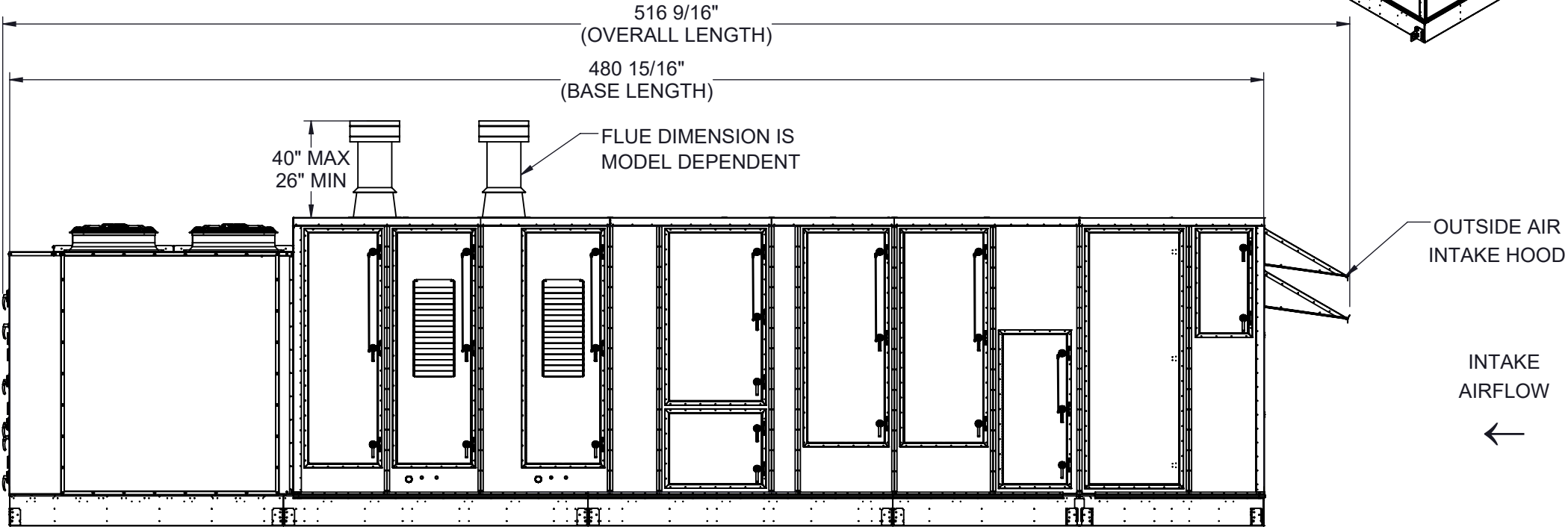
LEFT HAND ACCESS SHOWN IN ALL VIEWS
RIGHT HAND ACCESS OPTIONS LOCATED WITH SAME DIMENSIONS ON OPPOSITE SIDE UNLESS OTHERWISE SPECIFIED
WEIGHTS SHOWN REFLECT FULLY OPTIONED ESTIMATED UNIT WEIGHT



BACK VIEW



LEFT SIDE VIEW



UNIT SIZE	ESTIMATED WEIGHT (lbs.)
60 - 80 TONS	22500

Desert Aire has a policy of continuous product and quality improvement. Specifications and dimensions are subject to change without notice. This drawing and information contained herein are the exclusive property of the Desert Aire Corporation. Any use detrimental to the interests of Desert Aire is prohibited.

ALL DIMENSIONS ARE IN INCHES
TOLERANCE $\pm 1/8"$

All Dimensions in Inches
All Angles 90°
All outside corners 0.125" fillet
Unless Otherwise Specified



Third Angle Projection

Part weight

Tolerance Unless Otherwise Specified
X.X $\pm .125$
X.XX $\pm .060$
X.XXX $\pm .030$
Angles $\pm 1^\circ$

Drawn **ASV** Date Released **1/19/2018**

Sheet **1/9**

Scale **NTS**



N120 W18485 FREISTADT RD
GERMANTOWN, WI 53022
Tel: (262) 946-7400
Fax: (262) 946-7401

Description **SP 60-80 TON PKG DUAL GAS HEAT**

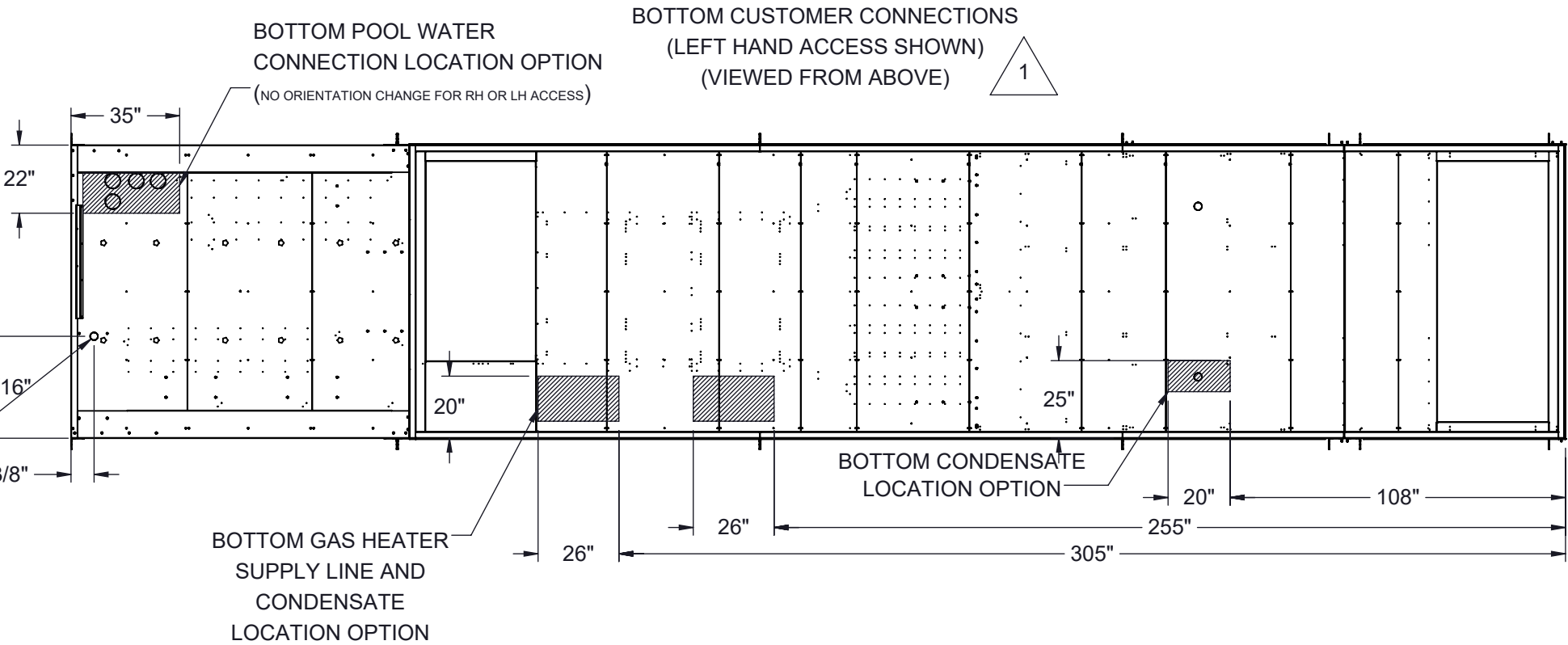
Page Title **GENERAL ARRANGEMENT**

Drawing Number **G1000-016**

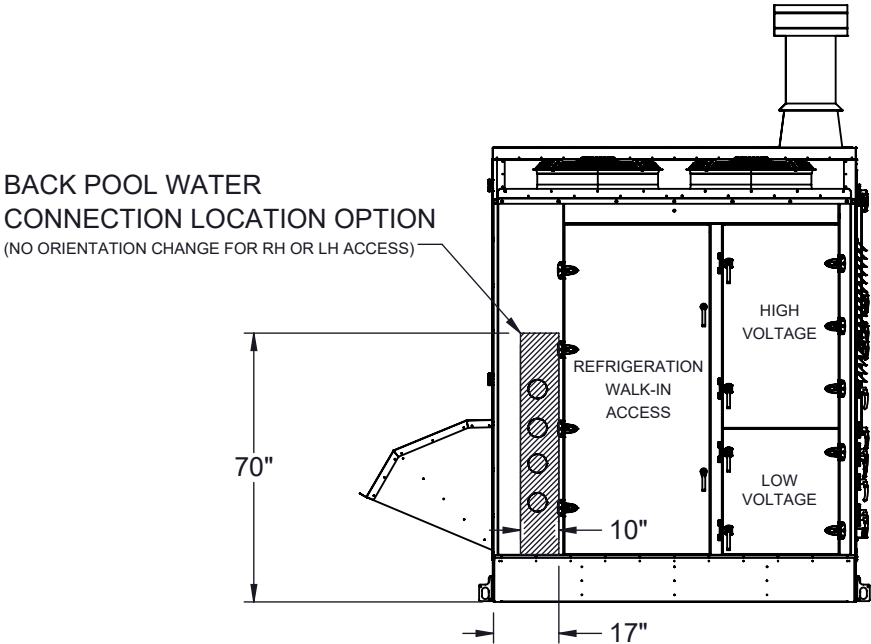
Rev. **8**

CUSTOMER CONNECTION LINE SIZE (in.)		
UNIT SIZE	60 TONS	70-80 TONS
CONDENSATE (PVC)	1 1/2	1 1/2
GAS (MNPT)	2	2
GAS CONDENSATE (PVC)	1	1
POOL WATER LINE CIRCUIT A (CPVC)	2	3
POOL WATER LINE CIRCUIT B (CPVC)	3	3

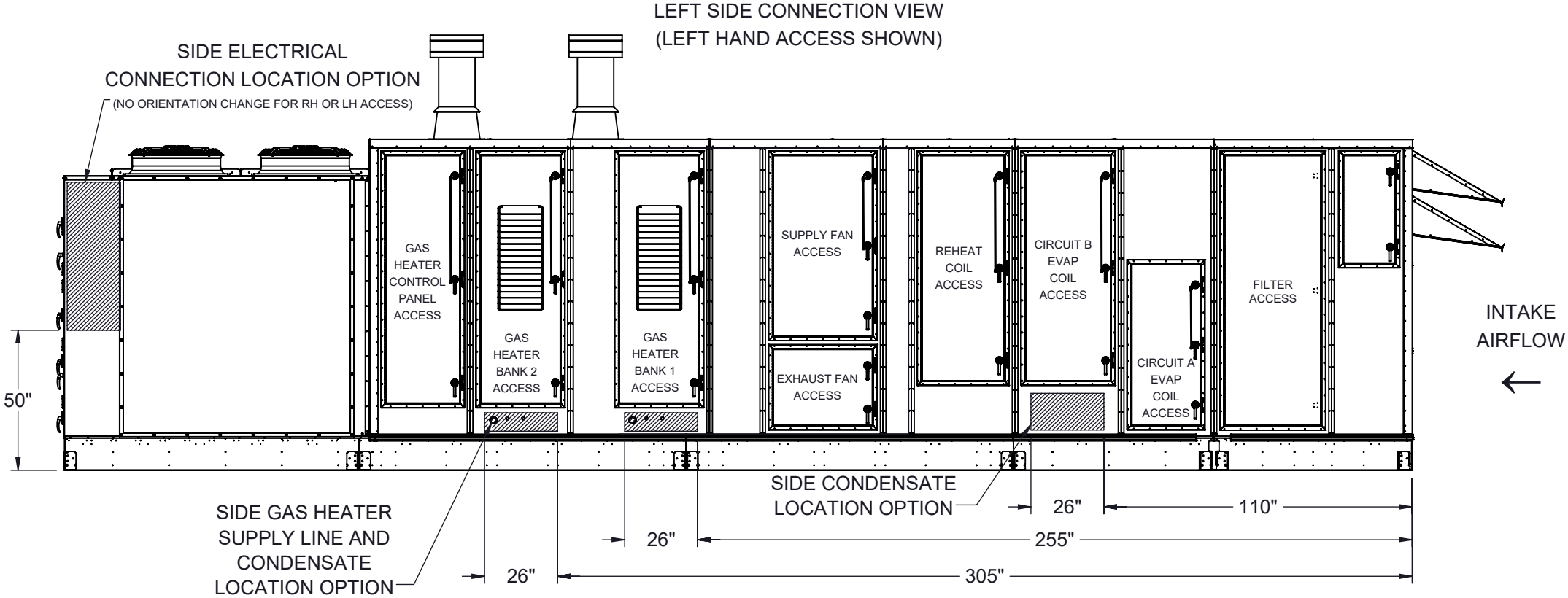
BOTTOM ELECTRICAL
 LOCATION OPTION
 (NO ORIENTATION CHANGE FOR RH OR LH ACCESS)



BACK CONNECTIONS VIEW
 (NO ORIENTATION CHANGE FOR RH OR LH ACCESS)



SIDE ELECTRICAL
 CONNECTION LOCATION OPTION
 (NO ORIENTATION CHANGE FOR RH OR LH ACCESS)



NOTES:
 REFER TO SHEET 1 FOR GENERAL NOTES
 LEFT HAND ACCESS SHOWN IN ALL VIEWS
 RIGHT HAND ACCESS OPTIONS LOCATED WITH SAME DIMENSIONS ON OPPOSITE SIDE UNLESS OTHERWISE SPECIFIED

FILTER INFORMATION

UNIT SIZE	OA QTY	OA SIZE	REPLACEMENT PART NUMBER	RA QTY	RA SIZE	REPLACEMENT PART NUMBER
60-80 TONS	15	18 X 24 X 4	870-056	15	18 X 24 X 4	870-056

Desert Aire has a policy of continuous product and quality improvement. Specifications and dimensions are subject to change without notice. This drawing and information contained herein are the exclusive property of the Desert Aire Corporation. Any use detrimental to the interests of Desert Aire is prohibited.

ALL DIMENSIONS ARE IN INCHES
 TOLERANCE $\pm 1/8"$

All Dimensions in Inches
 All Angles 90°
 All outside corners 0.125" fillet
 Unless Otherwise Specified



Third Angle Projection

Part weight

Tolerance Unless
 Otherwise Specified
 X.X $\pm .125$
 X.XX $\pm .060$
 X.XXX $\pm .030$
 Angles $\pm 1^\circ$

Drawn
 ASV

Date Released
 1/19/2018

Sheet
 2/9

Scale
 NTS

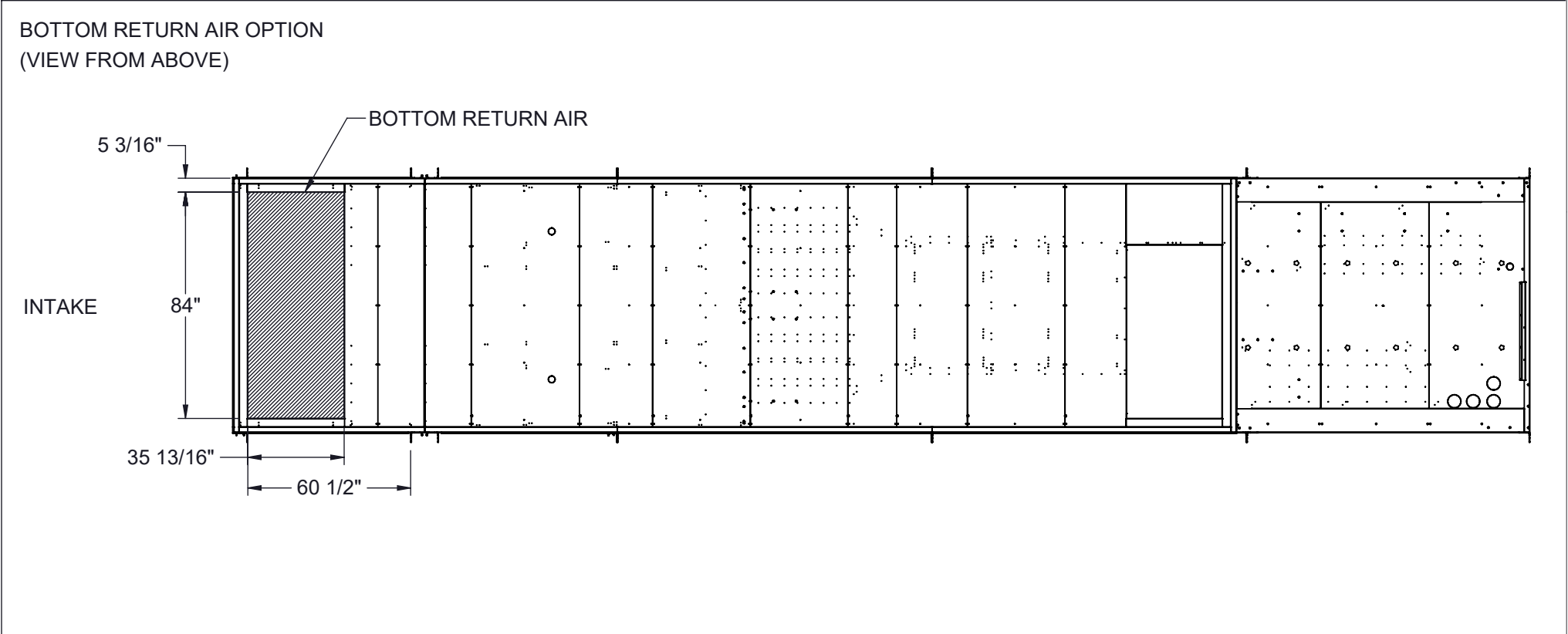
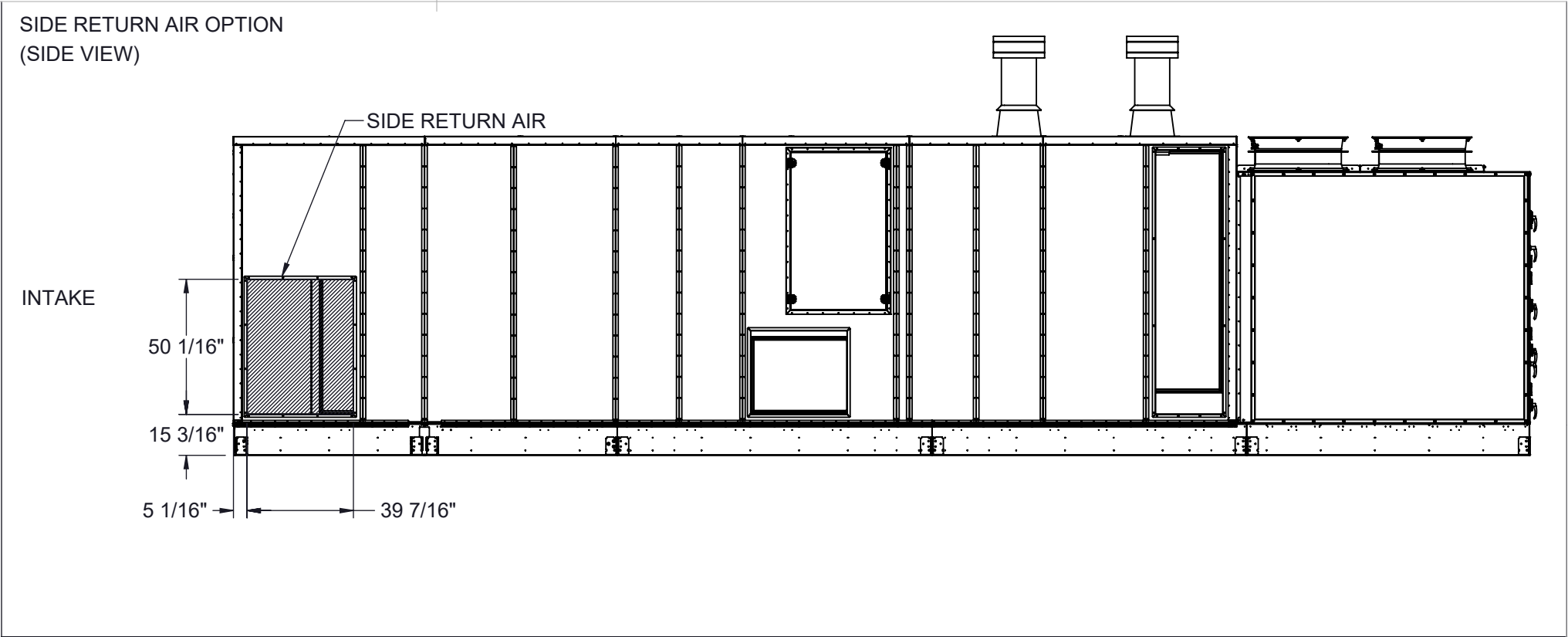
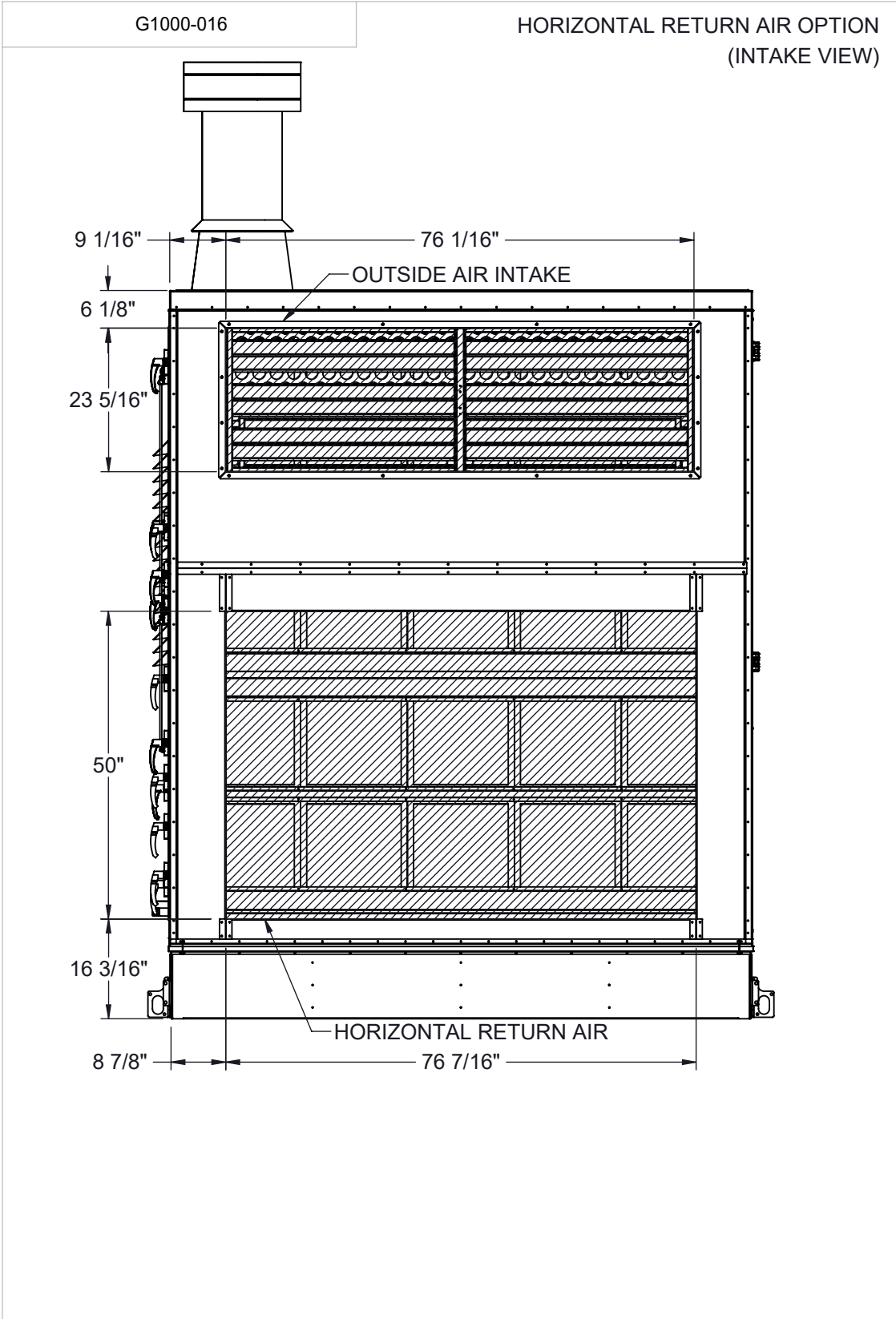


N120 W18485 FREISTADT RD
 GERMANTOWN, WI 53022
 Tel: (262) 946-7400
 Fax: (262) 946-7401

Description
 SP 60-80 TON PKG DUAL GAS HEAT

Page Title
 CUSTOMER INTERFACE GA

Drawing Number
 G1000-016




NOTES:
REFER TO SHEET 1 FOR GENERAL NOTES
HOODS REMOVED FOR CLARITY
ACCESS SIDE RETURN AIR OPTION SELECTION WILL SHIFT FILTER SECTION DOORS TO NON-ACCESS SIDE
OUTSIDE AIR INTAKE LOCATED IN THE SAME POSITION REGARDLESS OF OPTIONS

Desert Aire has a policy of continuous product and quality improvement. Specifications and dimensions are subject to change without notice. This drawing and information contained herein are the exclusive property of the Desert Aire Corporation. Any use detrimental to the interests of Desert Aire is prohibited.

ALL DIMENSIONS ARE IN INCHES
TOLERANCE $\pm 1/8"$


All Dimensions in Inches
All Angles 90°
All outside corners 0.125" fillet
Unless Otherwise Specified

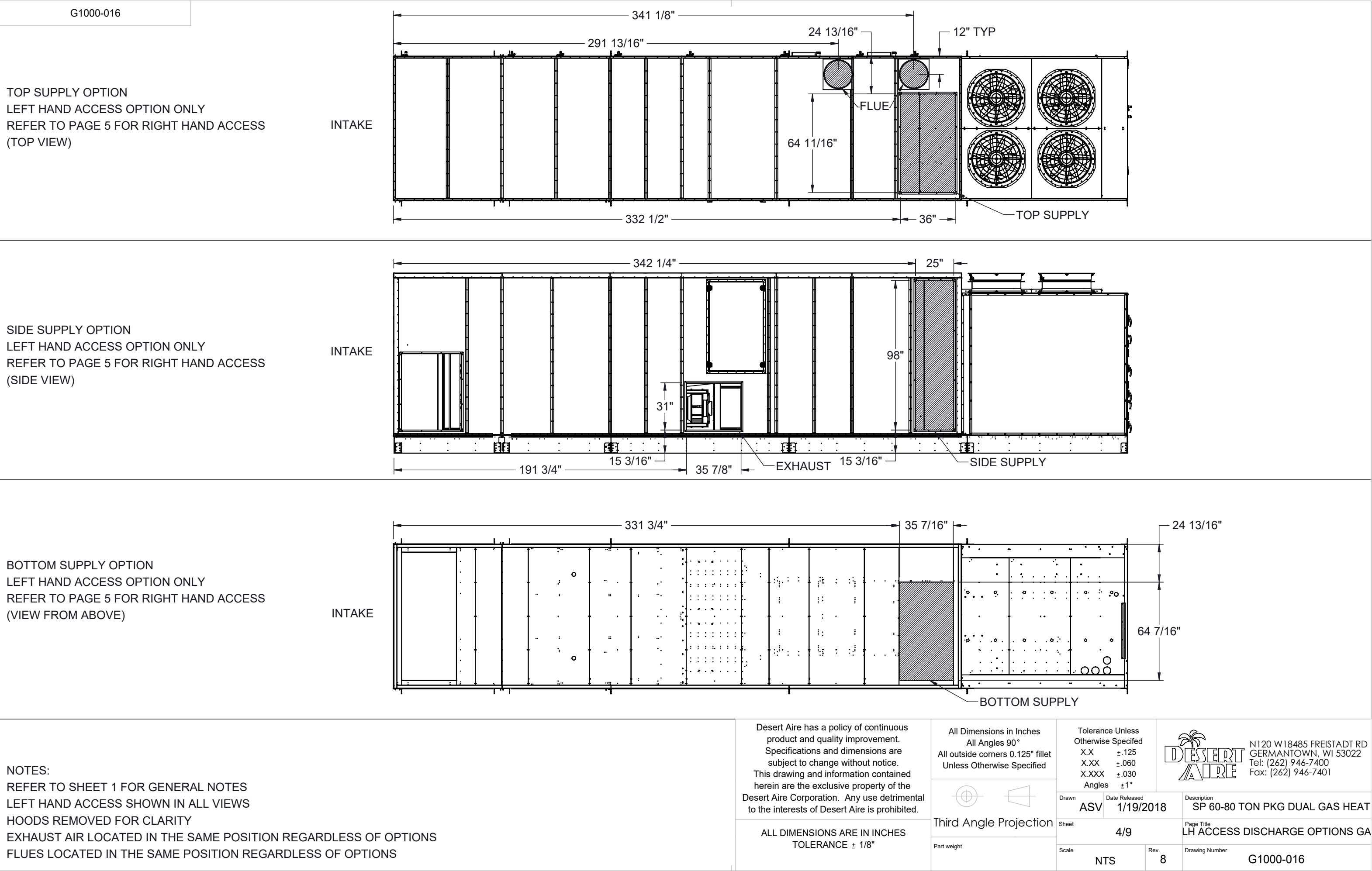

Third Angle Projection

Part weight

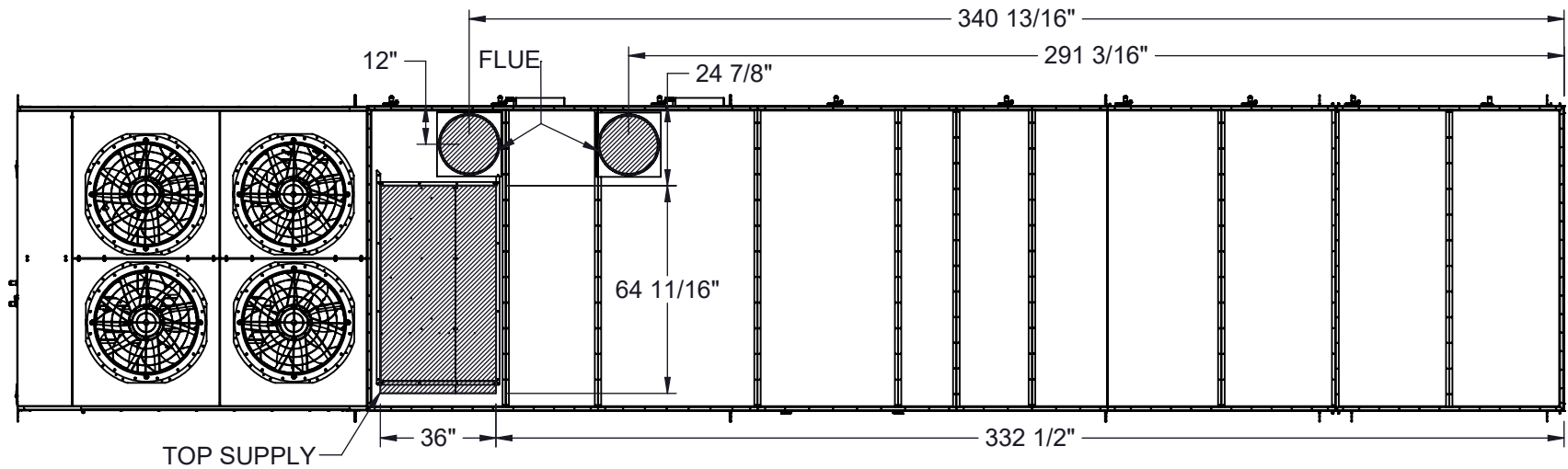
Tolerance Unless Otherwise Specified	
X.X	$\pm .125$
X.XX	$\pm .060$
X.XXX	$\pm .030$
Angles	$\pm 1^\circ$

Drawn	Date Released	Description
ASV	1/19/2018	SP 60-80 TON PKG DUAL GAS HEAT
Sheet	3/9	Page Title
Scale	NTS	Drawing Number
	8	G1000-016

 N120 W18485 FREISTADT RD
GERMANTOWN, WI 53022
Tel: (262) 946-7400
Fax: (262) 946-7401

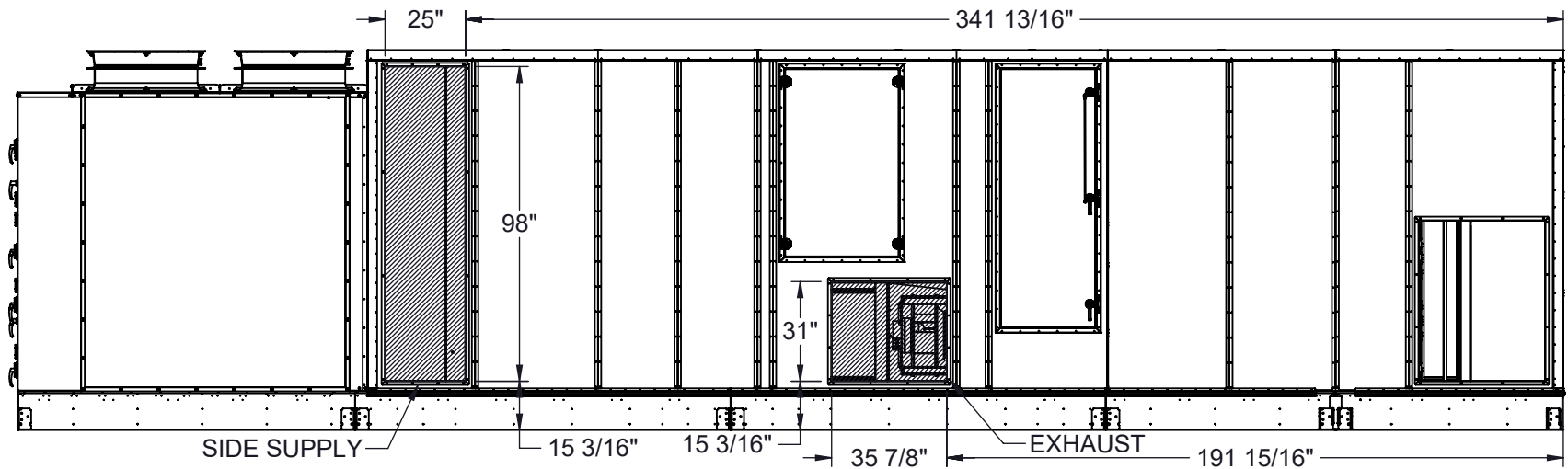


TOP SUPPLY OPTION
RIGHT HAND ACCESS OPTION ONLY
REFER TO PAGE 4 FOR LEFT HAND ACCESS
(TOP VIEW)



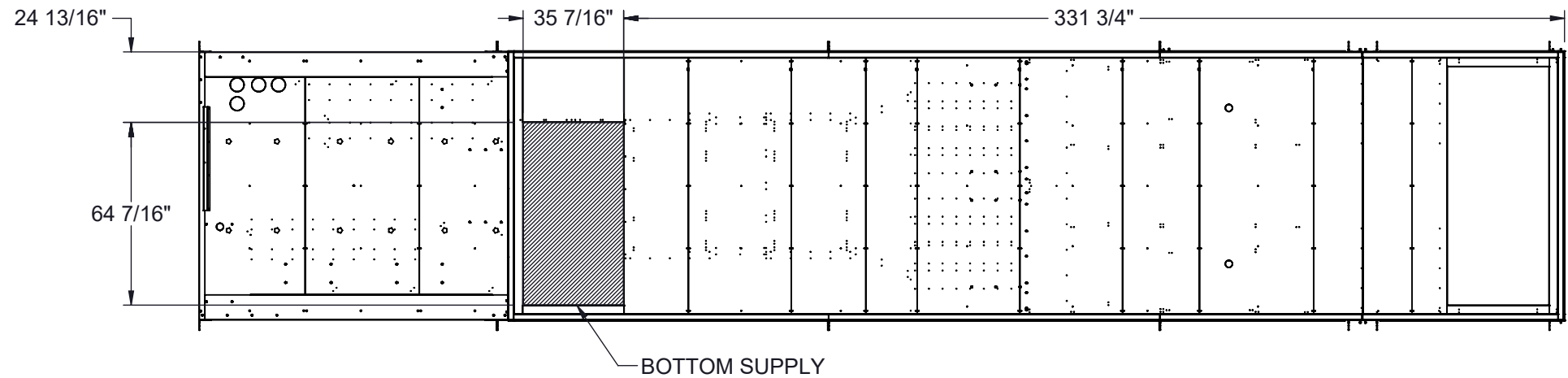
INTAKE

SIDE SUPPLY OPTION
RIGHT HAND ACCESS OPTION ONLY
REFER TO PAGE 4 FOR LEFT HAND ACCESS
(SIDE VIEW)



INTAKE

BOTTOM SUPPLY OPTION
RIGHT HAND ACCESS OPTION ONLY
REFER TO PAGE 4 FOR LEFT HAND ACCESS
(VIEW FROM ABOVE)



INTAKE

NOTES:
REFER TO SHEET 1 FOR GENERAL NOTES
RIGHT HAND ACCESS SHOWN IN ALL VIEWS
HOODS REMOVED FOR CLARITY
EXHAUST AIR LOCATED IN THE SAME POSITION REGARDLESS OF OPTIONS
FLUES LOCATED IN THE SAME POSITION REGARDLESS OF OPTIONS

Desert Aire has a policy of continuous product and quality improvement. Specifications and dimensions are subject to change without notice. This drawing and information contained herein are the exclusive property of the Desert Aire Corporation. Any use detrimental to the interests of Desert Aire is prohibited.

ALL DIMENSIONS ARE IN INCHES
TOLERANCE $\pm 1/8"$

All Dimensions in Inches
All Angles 90°
All outside corners 0.125" fillet
Unless Otherwise Specified

Third Angle Projection

Part weight

Tolerance Unless Otherwise Specified
X.X $\pm .125$
X.XX $\pm .060$
X.XXX $\pm .030$
Angles $\pm 1^\circ$

Drawn ASV Date Released 1/19/2018

Sheet 5/9

Scale NTS Rev. 8

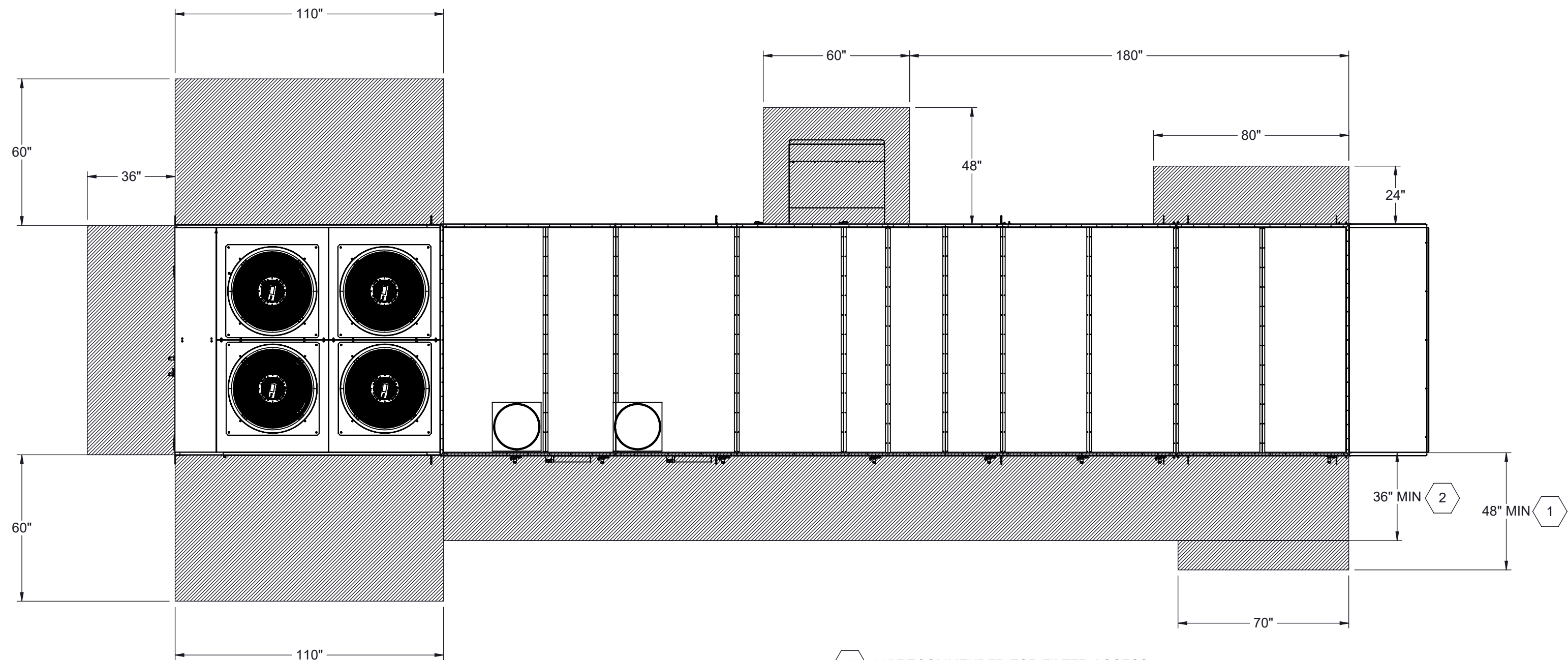


N120 W18485 FREISTADT RD
GERMANTOWN, WI 53022
Tel: (262) 946-7400
Fax: (262) 946-7401

Description SP 60-80 TON PKG DUAL GAS HEAT

Page Title RH ACCESS DISCHARGE OPTIONS GA



Drawing Number G1000-016



1 96" RECOMMENDED FOR FILTER ACCESS.

2 120" CLEARANCE ON ACCESS SIDE RECOMMENDED FOR FAN AND COIL SERVICE

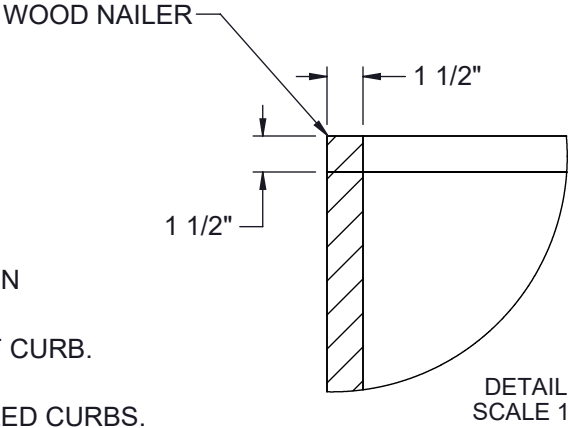
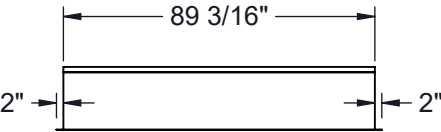
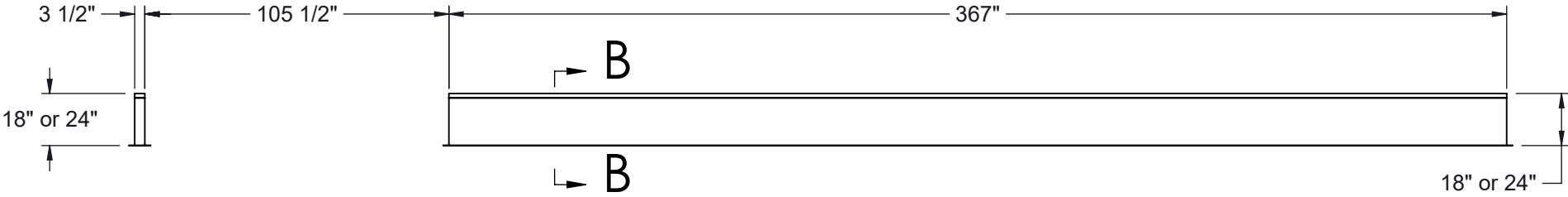
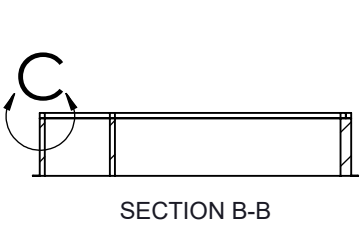
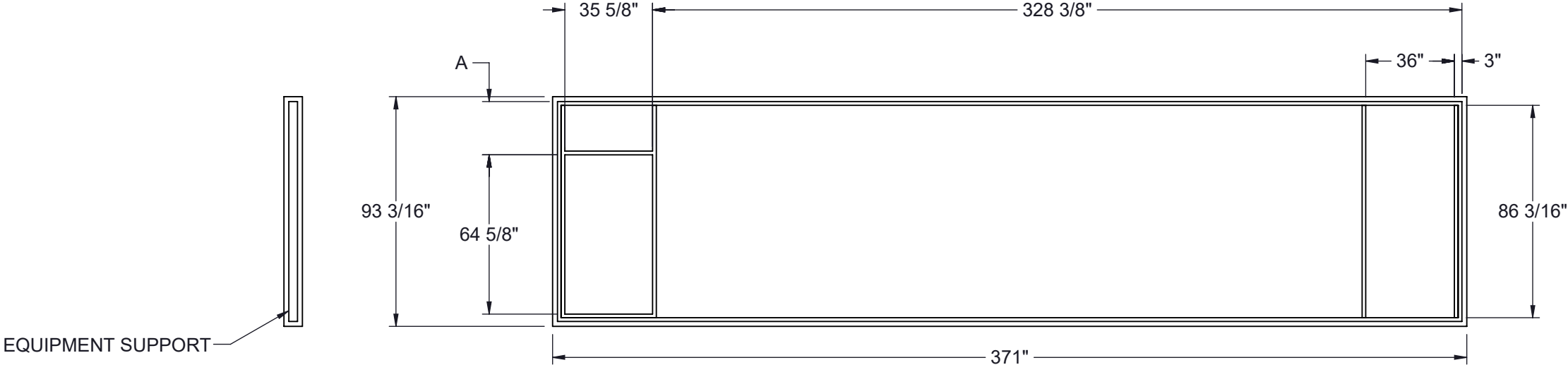
NOTES:
REFER TO SHEET 1 FOR GENERAL NOTES
LEFT HAND ACCESS SHOWN IN ALL VIEWS
RIGHT HAND ACCESS OPTIONS LOCATED WITH SAME DIMENSIONS ON OPPOSITE SIDE UNLESS OTHERWISE SPECIFIED

Desert Aire has a policy of continuous product and quality improvement. Specifications and dimensions are subject to change without notice. This drawing and information contained herein are the exclusive property of the Desert Aire Corporation. Any use detrimental to the interests of Desert Aire is prohibited.		All Dimensions in Inches All Angles 90° All outside corners 0.125" fillet Unless Otherwise Specified		Tolerance Unless Otherwise Specified X.X ±.125 X.XX ±.060 X.XXX ±.030 Angles ±1°		 N120 W18485 FREISTADT RD GERMANTOWN, WI 53022 Tel: (262) 946-7400 Fax: (262) 946-7401	
 Third Angle Projection		Drawn ASV		Date Released 1/19/2018		Description SP 60-80 TON PKG DUAL GAS HEAT	
		Sheet 6/9		Scale NTS		Page Title UNIT CLEARANCE GA	
ALL DIMENSIONS ARE IN INCHES TOLERANCE ± 1/8"		Part weight		Rev. 8		Drawing Number G1000-016	

NOTES:
REFER TO SHEET 1 FOR GENERAL NOTES

- 1. 14 GA GALVANIZED STEEL CONSTRUCTION
- 2. PRIME PAINTED AFTER FABRICATION
- 3. PRESSURE TREATED WOOD NAILERS
- 4. 1-1/2" THICK 3LB/FT^3 FIBERGLASS PERIMETER INSULATION
- 5. INTERNAL ANGLE REINFORCEMENT
- 6. CURB TO BE SHIPPED KNOCKED DOWN
- 7. NUMBER OF EQUIPMENT SUPPORTS MAY VARY

UNIT TON	ACCESS	18" CURB	24" CURB	A
60-80	RIGHT HAND	CB-80PGR4-18	CB-80PGR4-24	3"
60-80	LEFT HAND	CB-80PGL4-18	CB-80PG64-24	22 9/16"



NUMBER AND LOCATION OF CROSS SUPPORTS IS DEPENDANT UPON THE GUAGE OF MATERIAL USED TO CONSTRUCT THE CURB, DUCT SUPPORT CONFIGURATION LENGTH OF CURB, AND WIDTH OF CURB. INSTALLATION INSTRUCTIONS INCLUDED WITH CURB SHIPMENT INDICATE THE REQUIRED POSITION FOR FIELD ASSEMBLED CURBS.

Desert Aire has a policy of continuous product and quality improvement. Specifications and dimensions are subject to change without notice. This drawing and information contained herein are the exclusive property of the Desert Aire Corporation. Any use detrimental to the interests of Desert Aire is prohibited.

ALL DIMENSIONS ARE IN INCHES
TOLERANCE ± 1/8"

All Dimensions in Inches
All Angles 90°
All outside corners 0.125" fillet
Unless Otherwise Specified

Third Angle Projection

Part weight

Tolerance Unless Otherwise Specified	
X.X	±.125
X.XX	±.060
X.XXX	±.030
Angles	±1°

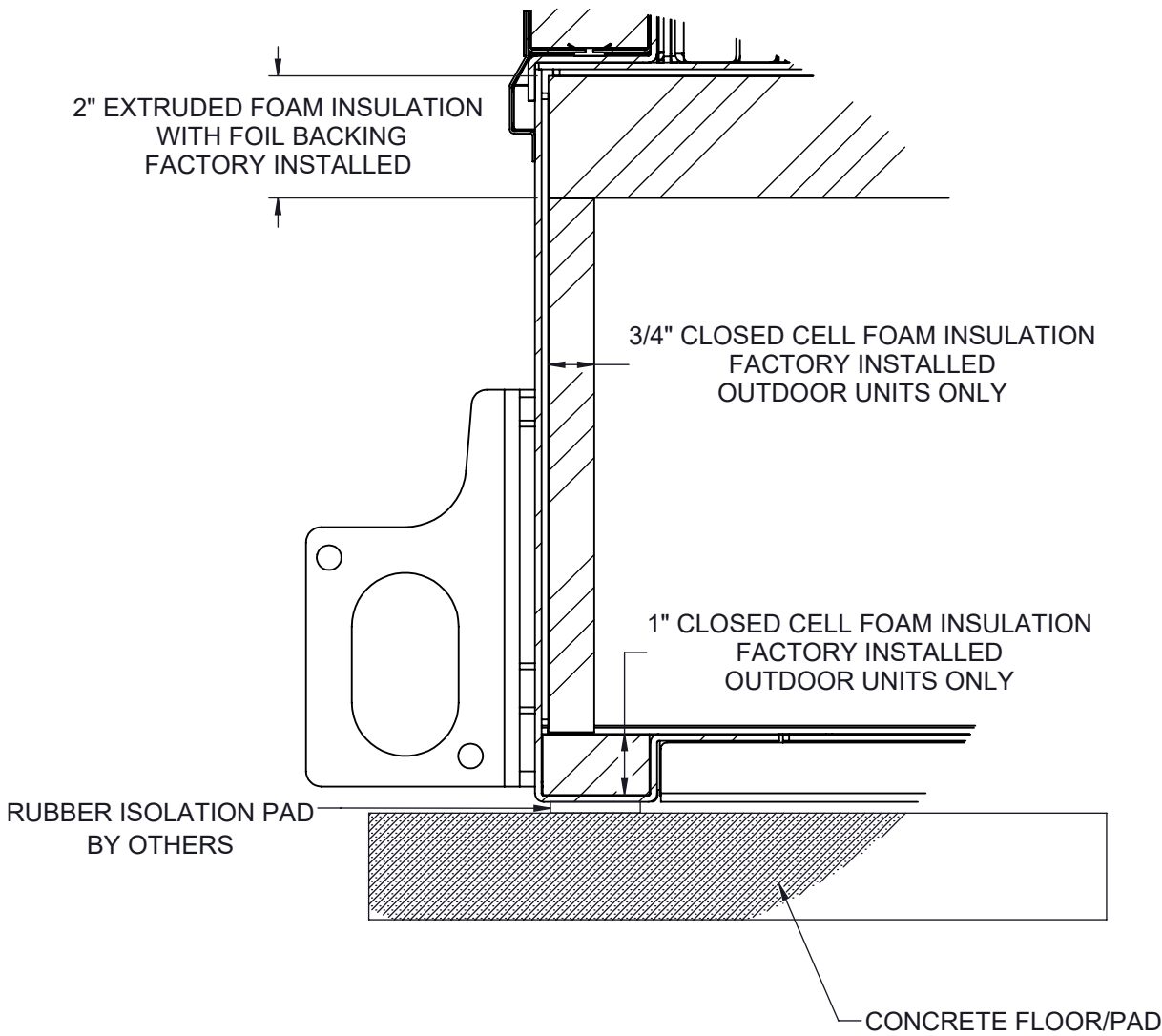
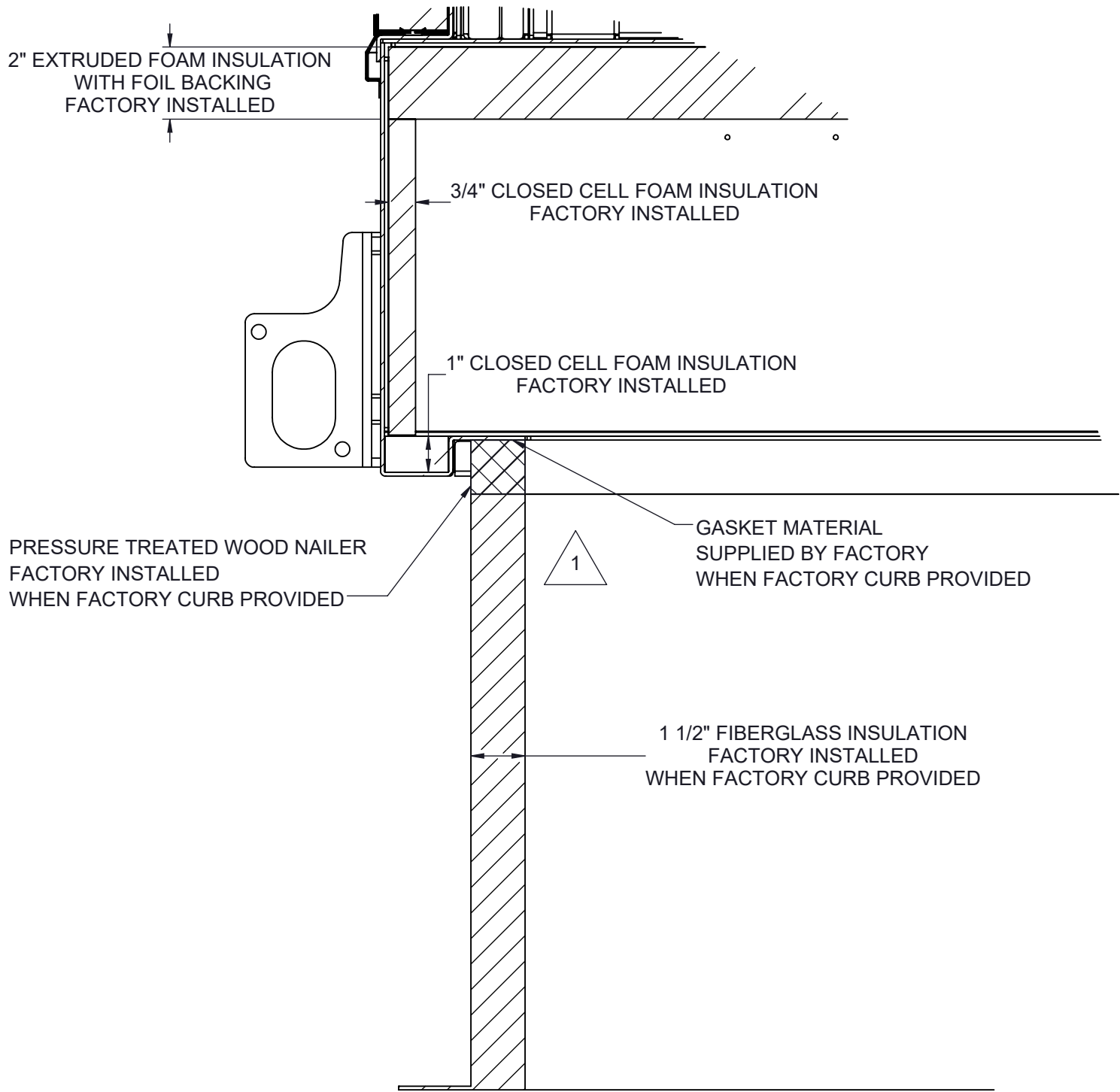
Drawn	ASV	Date Released	1/19/2018	
Sheet	7/9			
Scale	NTS		Rev.	8

N120 W18485 FREISTADT RD
GERMANTOWN, WI 53022
Tel: (262) 946-7400
Fax: (262) 946-7401

Description	SP 60-80 TON PKG DUAL GAS HEAT
Page Title	CURB DETAIL GA
Drawing Number	G1000-016

CURB MOUNT

PAD MOUNT



1 ALL EXPOSED METAL TO BE SPRAY FOAM INSULATION AFTER INSTALLATION

NOTES:
REFER TO SHEET 1 FOR GENERAL NOTES
SEE SHEET 7 NOTES FOR CURB SPECIFICATIONS

Desert Aire has a policy of continuous product and quality improvement. Specifications and dimensions are subject to change without notice. This drawing and information contained herein are the exclusive property of the Desert Aire Corporation. Any use detrimental to the interests of Desert Aire is prohibited.

ALL DIMENSIONS ARE IN INCHES
TOLERANCE $\pm 1/8"$

All Dimensions in Inches
All Angles 90°
All outside corners 0.125" fillet
Unless Otherwise Specified



Third Angle Projection

Part weight

Tolerance Unless Otherwise Specified
X.X $\pm .125$
X.XX $\pm .060$
X.XXX $\pm .030$
Angles $\pm 1^\circ$

Drawn
ASV
Date Released
1/19/2018

Sheet
8/9

Scale
NTS



N120 W18485 FREISTADT RD
GERMANTOWN, WI 53022
Tel: (262) 946-7400
Fax: (262) 946-7401

Description
SP 60-80 TON PKG DUAL GAS HEAT

Page Title
MOUNTING DETAILS GA

Drawing Number
G1000-016

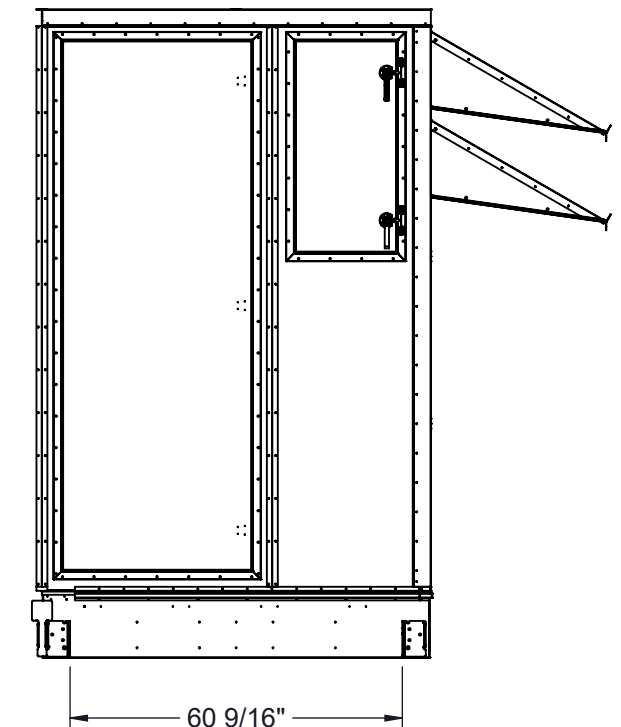
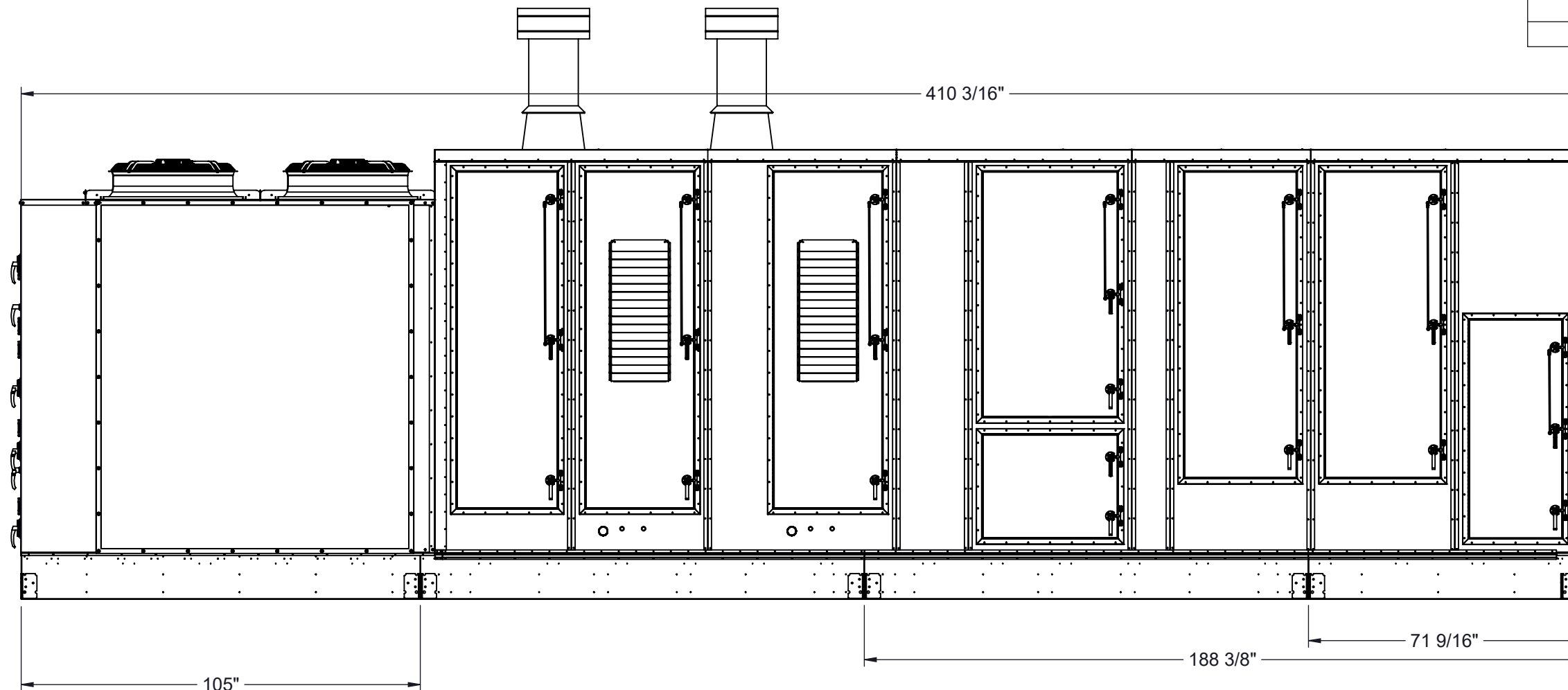
G1000-016

SHIP LOOSE ITEMS

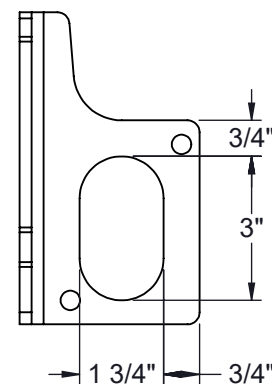
FLUE		
DA PART NO	DESCRIPTION	QTY
515-059	B-VENT 12" X 36"	2
515-058	FLASHING 12"	2
525-057	VENT CAP 12"	2
515-056	COLLAR 12"	2

EXHAUST HOOD		
DA PART NO	DESCRIPTION	QTY
HOOD	EXHAUST ASSEMBLY	1
807-023	SCREW #8-18X1/2 SS	36
990-105	CAULK WHITE	1

SECTION ITEMS		
DA PART NO	DESCRIPTION	QTY
807-023	SCREW #8-18X1/2 SS	172
807-007	BOLT 3/8-16X1 SS	4
807-008	WASHER 3/8 FLAT SS	4
807-009	WASHER LOCK SPLIT 3/8 SS	4
807-010	NUT 3/8-16 SS	4
807-223	SCREW #10-32x1/2 MACHINE HEX	4
950-089	TAPER SEAM SEALER 2"	50 FT (1 ROLL)
950-090	TAPE SEAM SEALER 4"	40 INCHES
990-105	CAULK WHITE	2
352-098-040	BASE Z CVR SIDE,MID SEC	2
STRIPS	2.5" X 103" METAL SIDE STRIPS	2
STRIPS	2.5" X 92 1/2" METAL TOP STRIPS	1
STRIPS	1" X 3" X 24" METAL CORNER STRIPS	2



LUG DETAIL



Desert Aire has a policy of continuous product and quality improvement. Specifications and dimensions are subject to change without notice. This drawing and information contained herein are the exclusive property of the Desert Aire Corporation. Any use detrimental to the interests of Desert Aire is prohibited.

ALL DIMENSIONS ARE IN INCHES
TOLERANCE $\pm 1/8"$

All Dimensions in Inches
All Angles 90°
All outside corners 0.125" fillet
Unless Otherwise Specified



Third Angle Projection

Part weight

Tolerance Unless Otherwise Specified	
X.X	±.125
X.XX	±.060
X.XXX	±.030
Angles	±1°

Drawn	Date Released
ASV	1/19/2018

Sheet 9/9

Scale NTS

N120 W18485 FREISTADT RD
GERMANTOWN, WI 53022
Tel: (262) 946-7400
Fax: (262) 946-7401

Description	SP 60-80 TON PKG DUAL GAS HEAT
-------------	--------------------------------

Page Title
SHIPPING/LIFTING DETAILS GA

Drawing Number	G1000-016
----------------	-----------

NOTES:
REFER TO SHEET 1 FOR GENERAL NOTES AND FLUE/HOOD DETAILS
UNIT SHIPPED IN TWO SECTIONS SEE I/O MANUAL FOR ASSEMBLY DETAILS