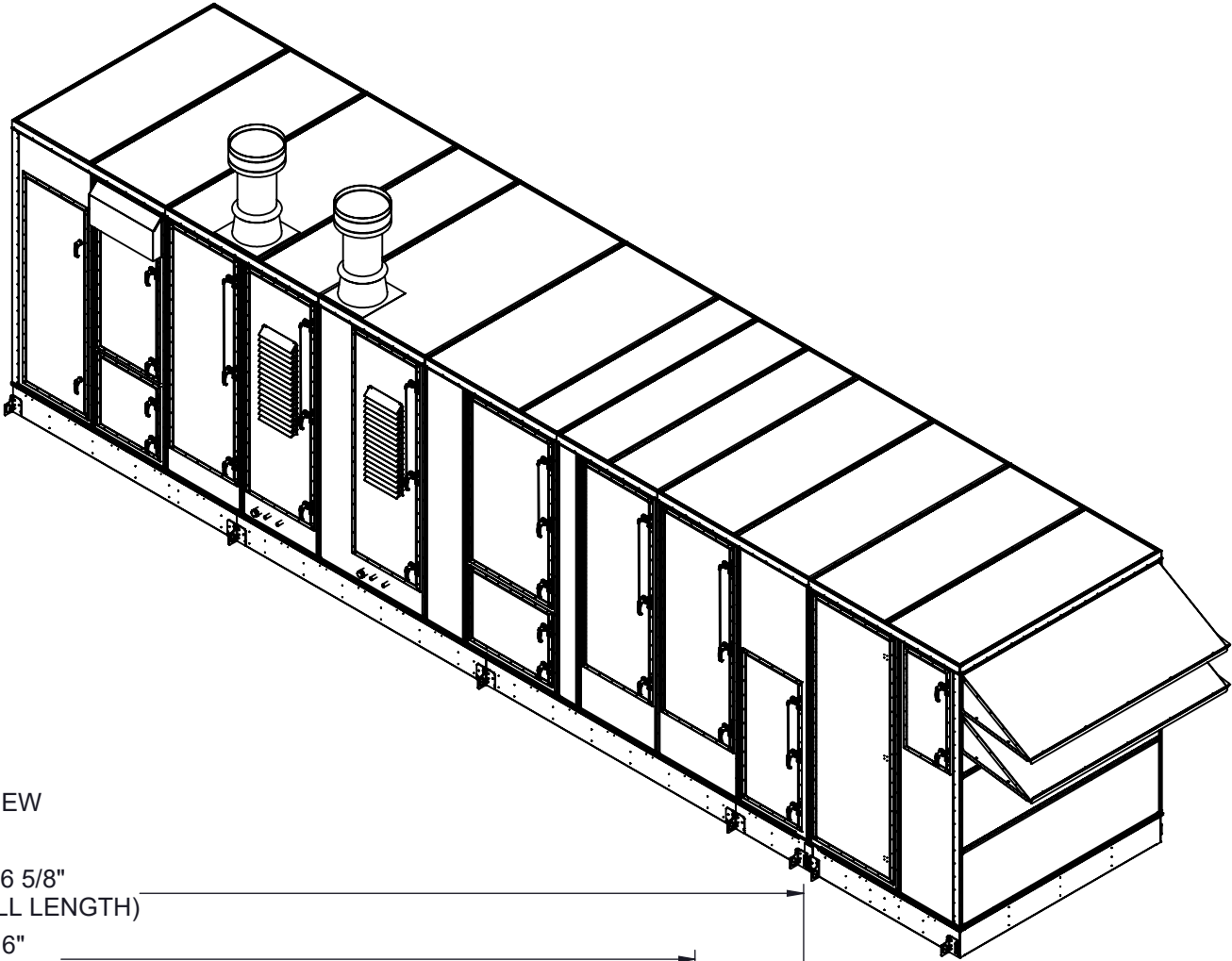
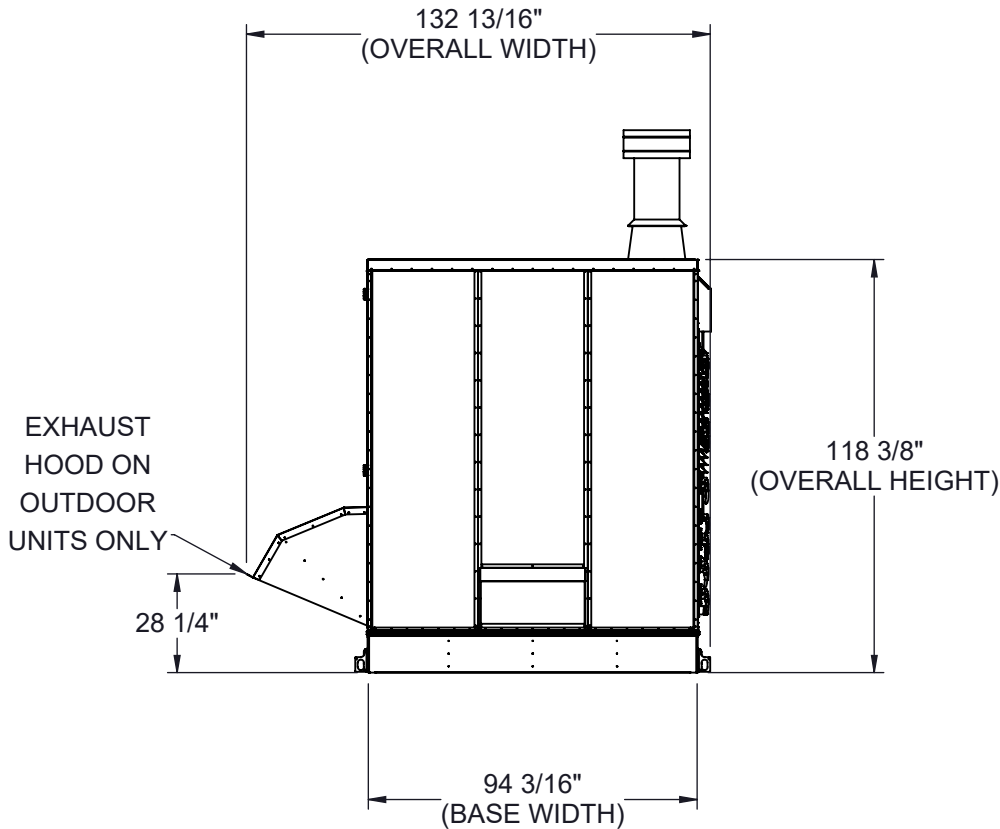


GENERAL NOTES FOR APPLICABLE SHEETS:

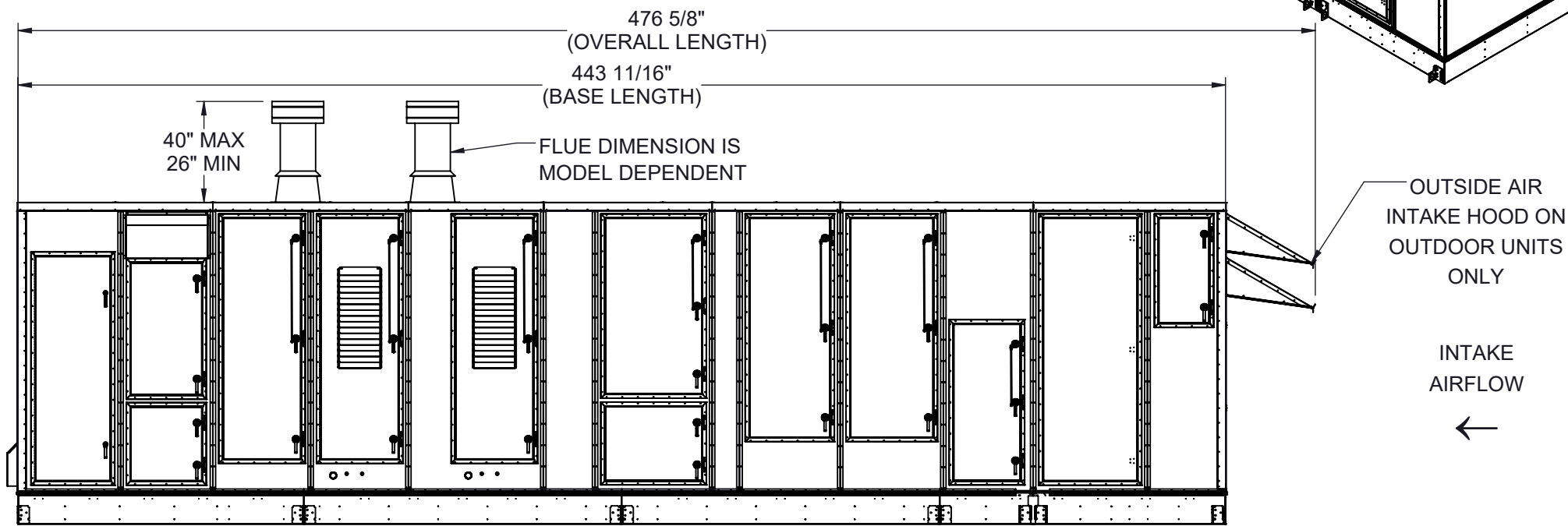
LEFT HAND ACCESS SHOWN IN ALL VIEWS
RIGHT HAND ACCESS OPTIONS LOCATED WITH SAME DIMENSIONS ON OPPOSITE SIDE UNLESS OTHERWISE SPECIFIED
WEIGHTS SHOWN REFLECT FULLY OPTIONED ESTIMATED UNIT WEIGHT



BACK VIEW



LEFT SIDE VIEW



UNIT SIZE	ESTIMATED WEIGHT (lbs.)
60 - 80 TONS	21500

Desert Aire has a policy of continuous product and quality improvement. Specifications and dimensions are subject to change without notice. This drawing and information contained herein are the exclusive property of the Desert Aire Corporation. Any use detrimental to the interests of Desert Aire is prohibited.

ALL DIMENSIONS ARE IN INCHES
TOLERANCE $\pm 1/8"$

All Dimensions in Inches
All Angles 90°
All outside corners 0.125" fillet
Unless Otherwise Specified



Third Angle Projection

Part weight

Tolerance Unless Otherwise Specified
X.X $\pm .125$
X.XX $\pm .060$
X.XXX $\pm .030$
Angles $\pm 1^\circ$

Drawn **ASV** Date Released **1/19/2018**

Sheet **1/10**

Scale **NTS**



N120 W18485 FREISTADT RD
GERMANTOWN, WI 53022
Tel: (262) 946-7400
Fax: (262) 946-7401

Description **SP 60-80 TON SPLIT DUAL GAS HT**

Page Title **GENERAL ARRANGEMENT**

Drawing Number **G1000-015**

Rev. **7**

CUSTOMER CONNECTION LINE SIZE (in.)		
UNIT SIZE	60 TONS	70-80 TONS
CONDENSATE (PVC)	1 1/2	1 1/2
GAS CONDENSATE (PVC)	1	1
GAS (MNPT)	2	2
DISCHARGE LINE CIRCUIT A (CU)	1 1/8	1 5/8
LIQUID LINE CIRCUIT A (CU)	7/8	1 1/8
DISCHARGE LINE CIRCUIT B (CU)	1 5/8	1 5/8
LIQUID LINE CIRCUIT B (CU)	1 1/8	1 1/8
POOL WATER LINE CIRCUIT A (CPVC)	2	3
POOL WATER LINE CIRCUIT B (CPVC)	3	3
COOLING LOOP LINE (CU)	3	3

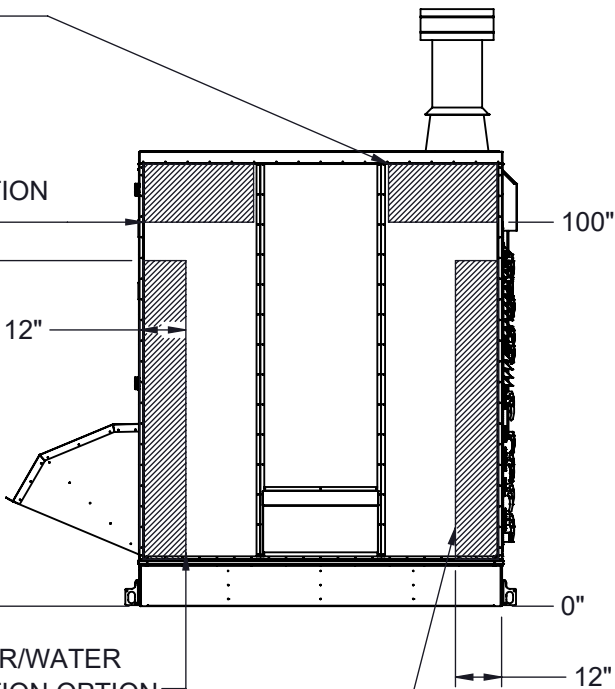
LH ACCESS
BACK ELECTRICAL
CONNECTION LOCATION
OPTION

RH ACCESS
BACK ELECTRICAL
CONNECTION LOCATION
OPTION

RIGHT BACK
REMOTE CONDENSER/WATER
CONNECTION LOCATION OPTION

LEFT BACK
REMOTE CONDENSER/WATER
CONNECTION LOCATION OPTION

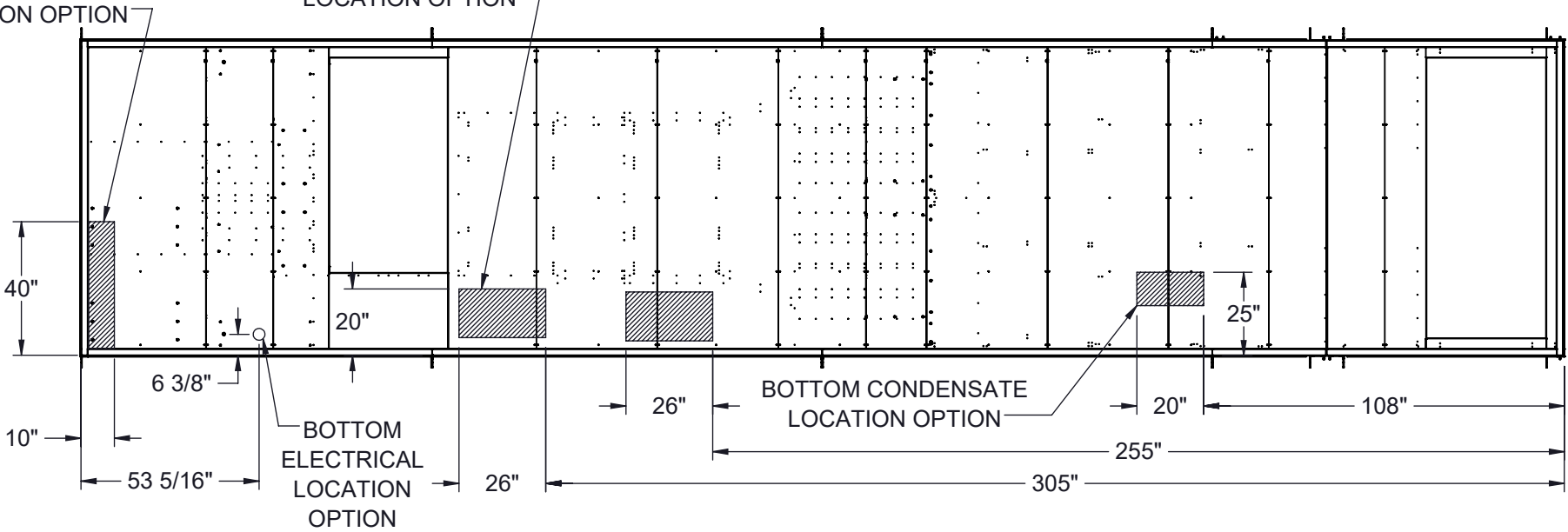
BACK CONNECTIONS VIEW
(NO ORIENTATION CHANGE FOR RH OR LH ACCESS)



BOTTOM REMOTE
CONDENSER/WATER
CONNECTION
LOCATION OPTION

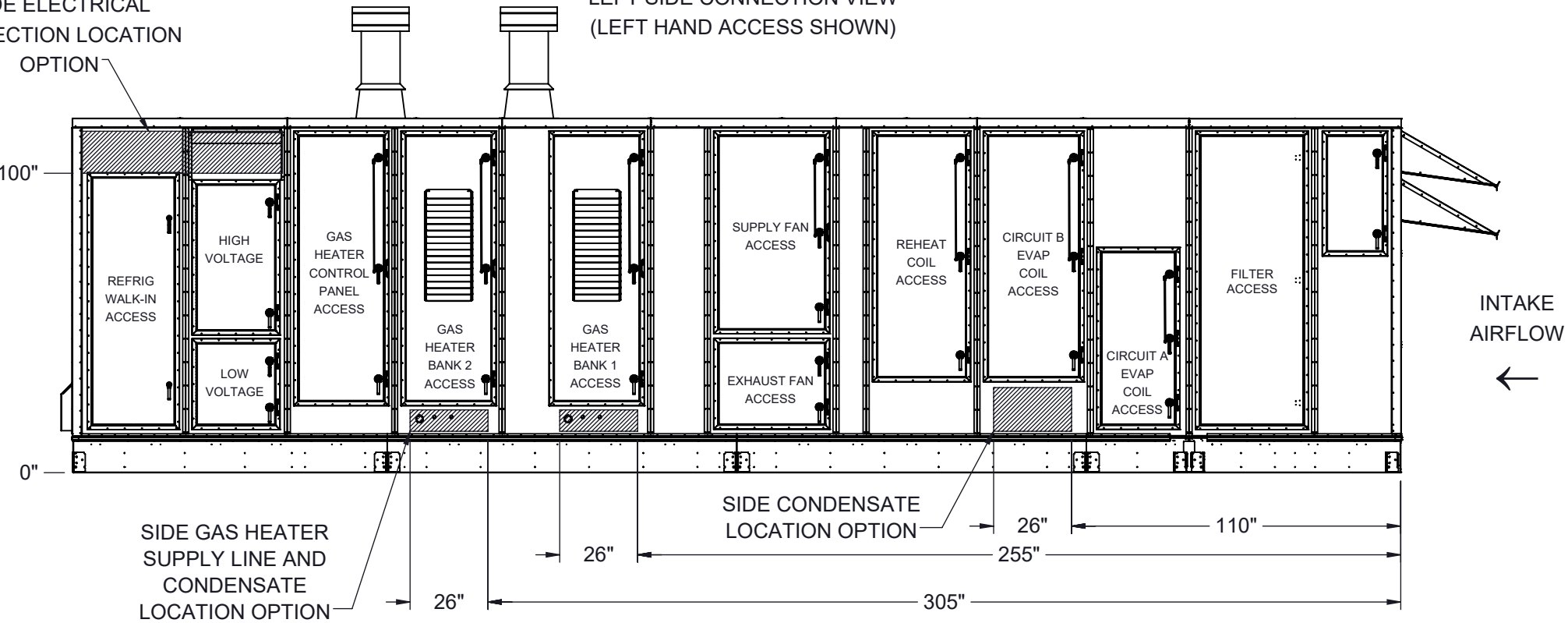
BOTTOM GAS HEATER
SUPPLY LINE AND CONDENSATE
LOCATION OPTION

BOTTOM CUSTOMER CONNECTIONS
(LEFT HAND ACCESS SHOWN)
(VIEWED FROM ABOVE)



SIDE ELECTRICAL
CONNECTION LOCATION
OPTION

LEFT SIDE CONNECTION VIEW
(LEFT HAND ACCESS SHOWN)



INTAKE
AIRFLOW

NOTES:
REFER TO SHEET 1 FOR GENERAL NOTES
LEFT HAND ACCESS SHOWN IN ALL VIEWS
RIGHT HAND ACCESS OPTIONS LOCATED WITH SAME DIMENSIONS ON OPPOSITE SIDE UNLESS OTHERWISE SPECIFIED

1

FILTER INFORMATION						
UNIT SIZE	OA QTY	OA SIZE	REPLACEMENT PART NUMBER	RA QTY	RA SIZE	REPLACEMENT PART NUMBER
60-80 TONS	15	18 X 24 X 4	870-056	15	18 X 24 X 4	870-056

Desert Aire has a policy of continuous product and quality improvement. Specifications and dimensions are subject to change without notice. This drawing and information contained herein are the exclusive property of the Desert Aire Corporation. Any use detrimental to the interests of Desert Aire is prohibited.

ALL DIMENSIONS ARE IN INCHES
TOLERANCE $\pm 1/8"$

All Dimensions in Inches
All Angles 90°
All outside corners 0.125" fillet
Unless Otherwise Specified

Third Angle Projection

Part weight

Tolerance Unless Otherwise Specified
X.X $\pm .125$
X.XX $\pm .060$
X.XXX $\pm .030$
Angles $\pm 1^\circ$

Drawn **ASV** Date Released **1/19/2018**

Sheet **2/10**

Scale **NTS** Rev. **7**

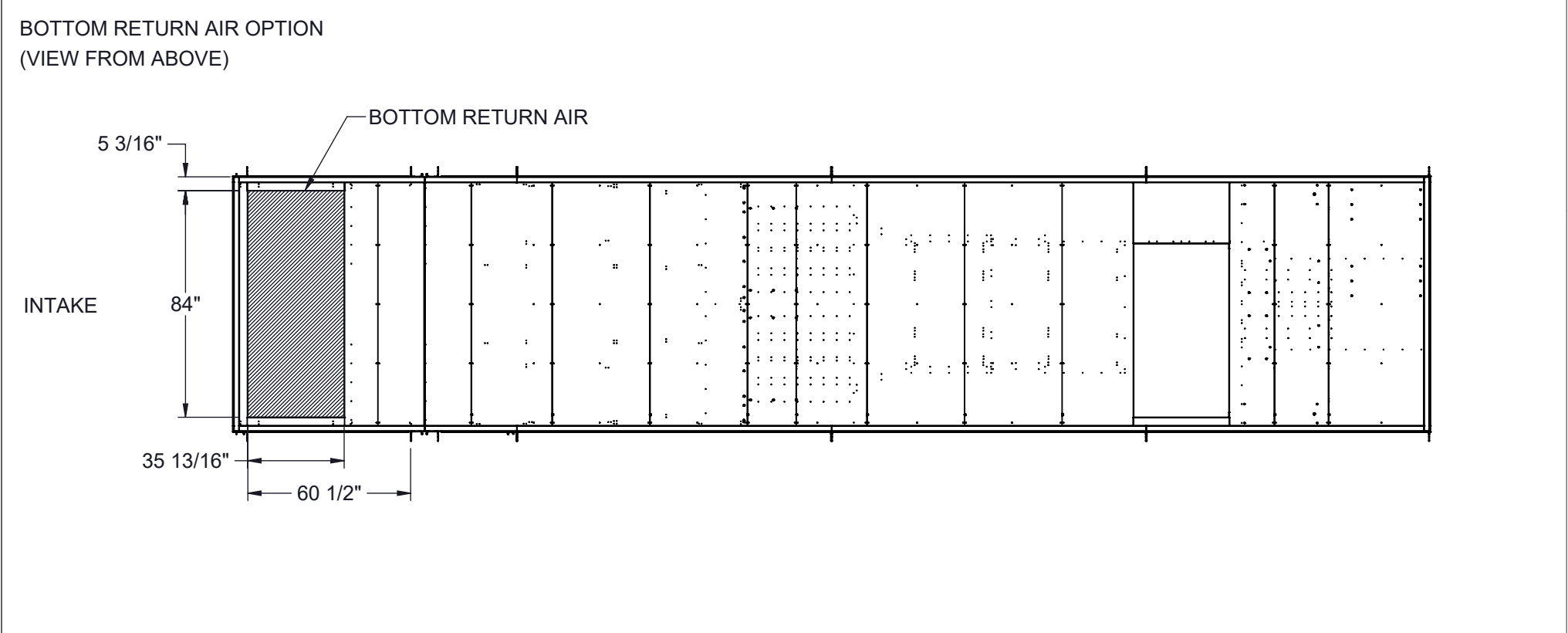
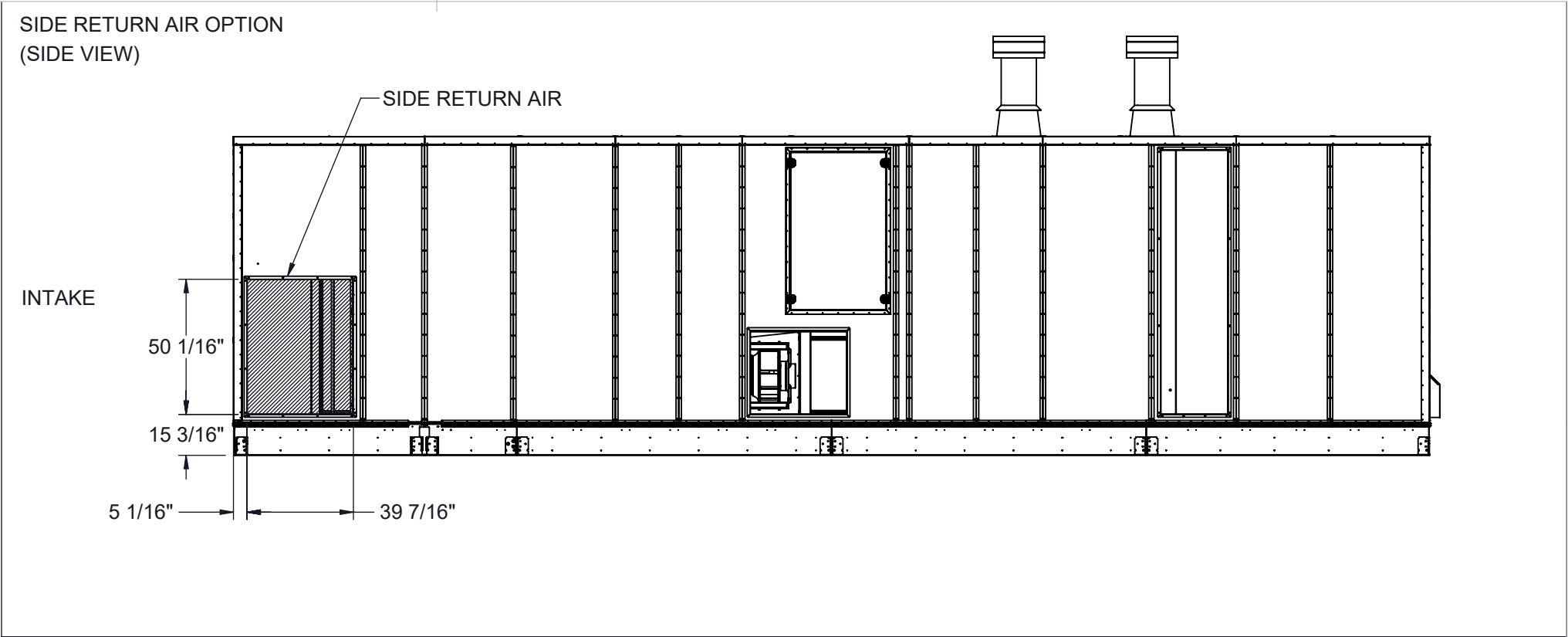
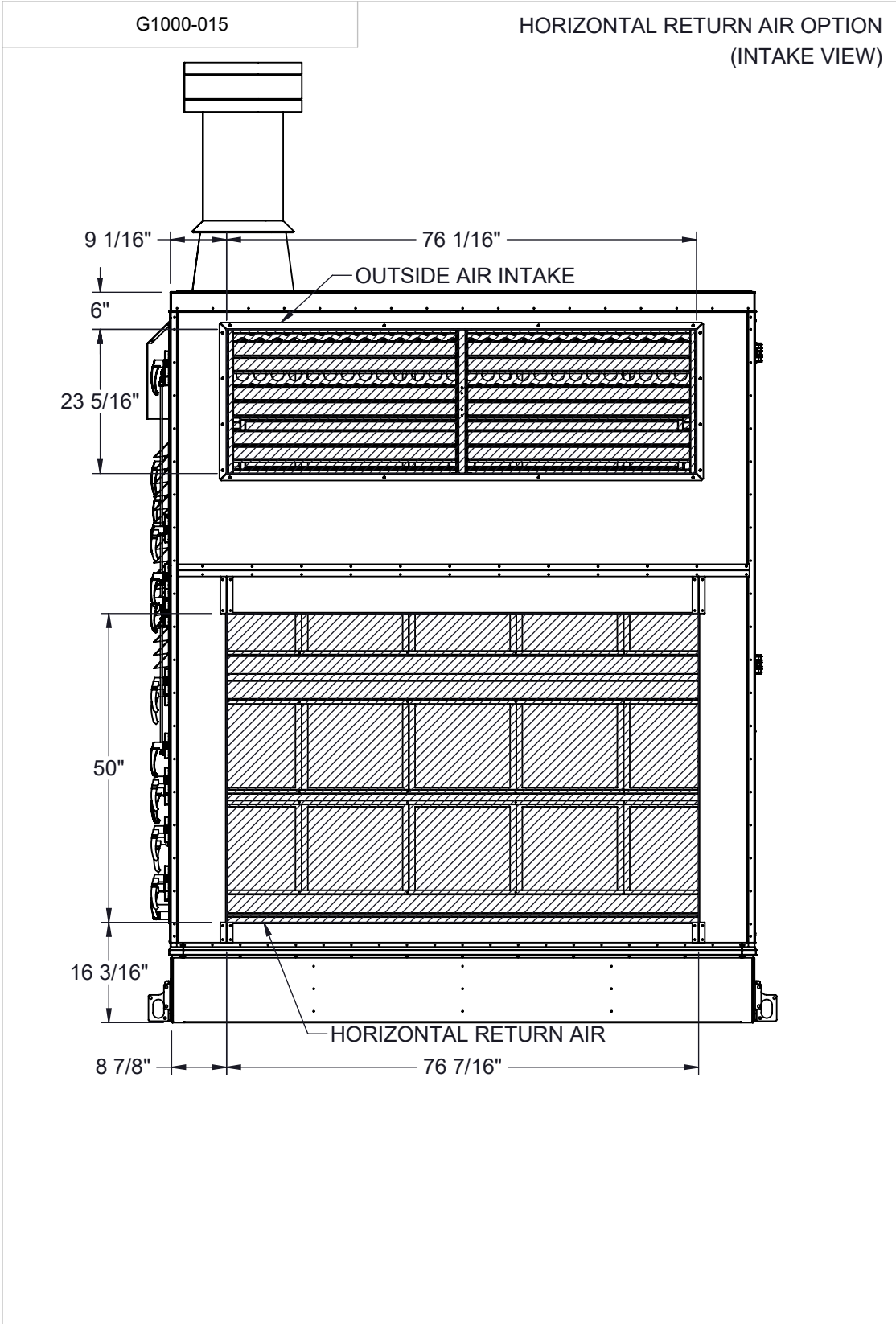
DESERT AIRE

N120 W18485 FREISTADT RD
GERMANTOWN, WI 53022
Tel: (262) 946-7400
Fax: (262) 946-7401

Description **SP 60-80 TON SPLIT DUAL GAS HT**

Page Title **CUSTOMER INTERFACE GA**

Drawing Number **G1000-015**



NOTES:
REFER TO SHEET 1 FOR GENERAL NOTES
HOODS REMOVED FOR CLARITY
ACCESS SIDE RETURN AIR OPTION SELECTION WILL SHIFT FILTER SECTION DOORS TO NON-ACCESS SIDE
OUTSIDE AIR INTAKE LOCATED IN THE SAME POSITION REGARDLESS OF OPTIONS

Desert Aire has a policy of continuous product and quality improvement. Specifications and dimensions are subject to change without notice. This drawing and information contained herein are the exclusive property of the Desert Aire Corporation. Any use detrimental to the interests of Desert Aire is prohibited.

ALL DIMENSIONS ARE IN INCHES
TOLERANCE $\pm 1/8"$

All Dimensions in Inches
All Angles 90°
All outside corners 0.125" fillet
Unless Otherwise Specified



Third Angle Projection

Part weight

Tolerance Unless
Otherwise Specified
X.X $\pm .125$
X.XX $\pm .060$
X.XXX $\pm .030$
Angles $\pm 1^\circ$

Drawn
ASV
Date Released
1/19/2018

Sheet
3/10

Scale
NTS



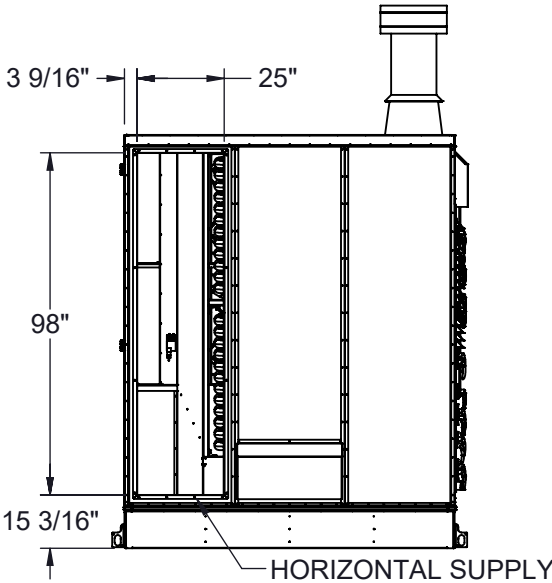
N120 W18485 FREISTADT RD
GERMANTOWN, WI 53022
Tel: (262) 946-7400
Fax: (262) 946-7401

Description
SP 60-80 TON SPLIT DUAL GAS HT

Page Title
INTAKE OPTIONS GA

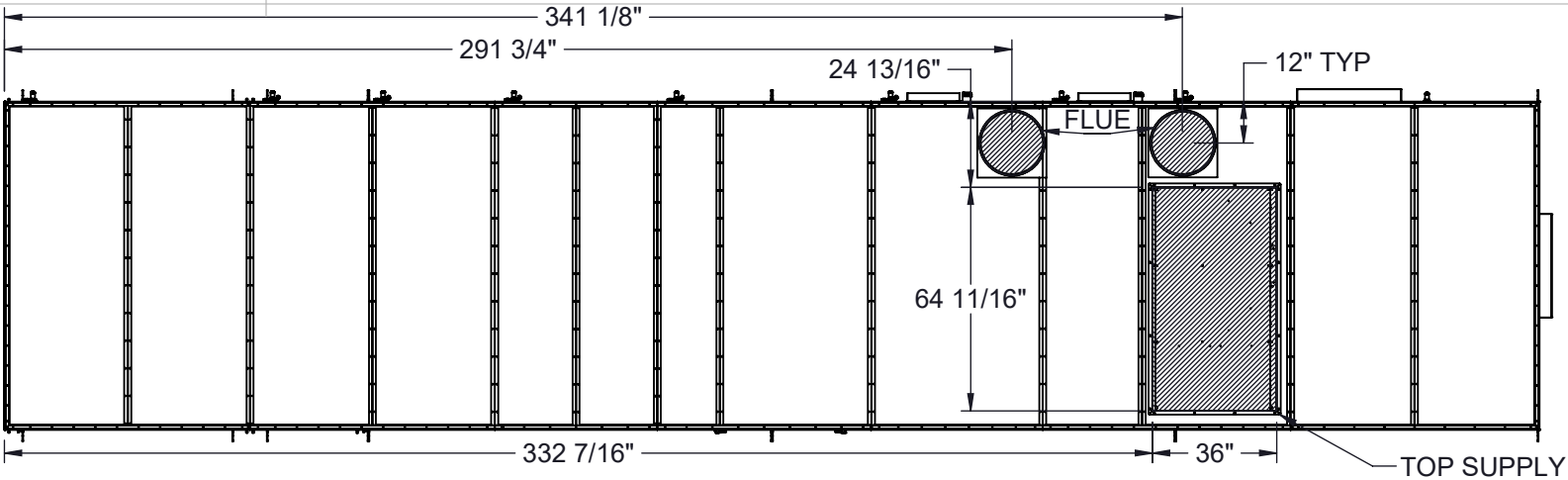
Drawing Number
G1000-015

HORIZONTAL SUPPLY OPTION
LEFT HAND ACCESS OPTION ONLY
REFER TO PAGE 5 FOR RIGHT HAND ACCESS
(BACK VIEW)



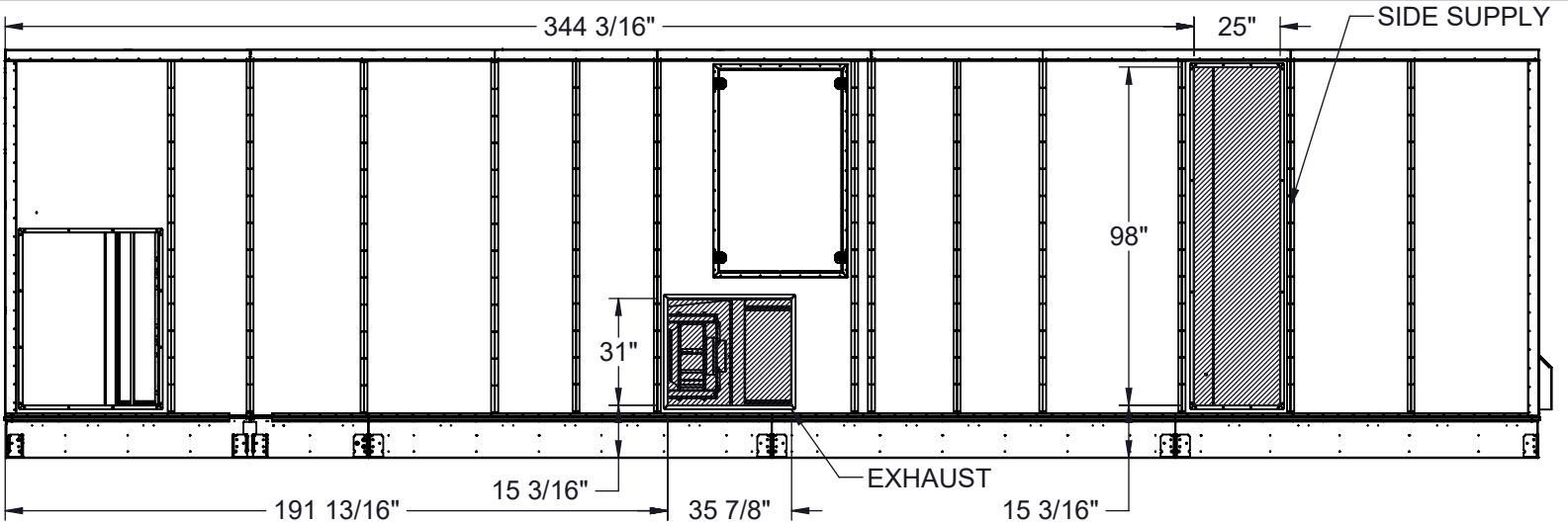
TOP SUPPLY OPTION
LEFT HAND ACCESS OPTION ONLY
REFER TO PAGE 5 FOR RIGHT HAND ACCESS
(TOP VIEW)

INTAKE



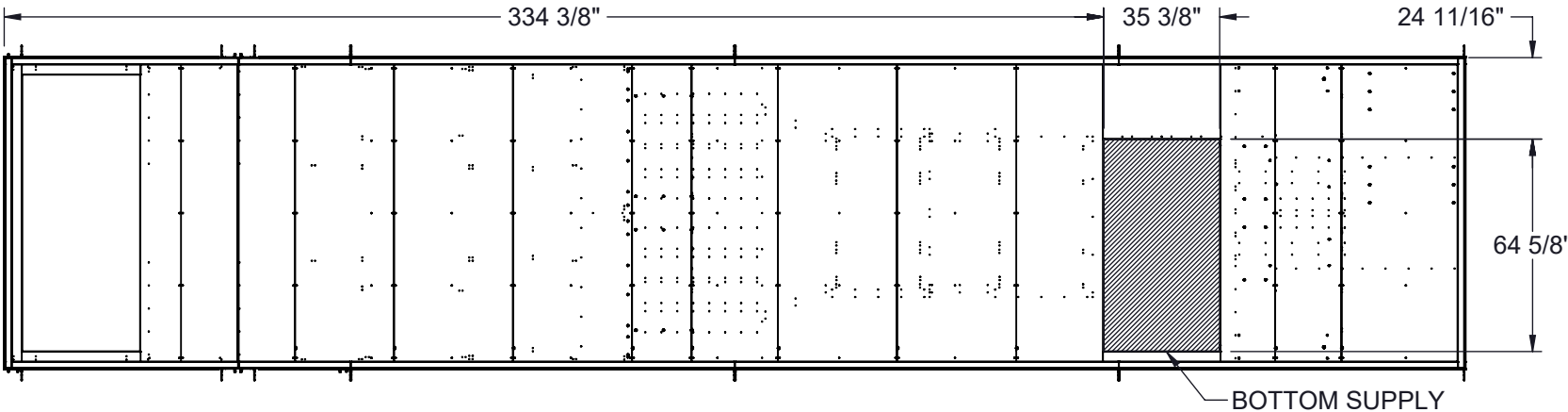
SIDE SUPPLY OPTION
LEFT HAND ACCESS OPTION ONLY
REFER TO PAGE 5 FOR RIGHT HAND ACCESS
(SIDE VIEW)

INTAKE



BOTTOM SUPPLY OPTION
LEFT HAND ACCESS OPTION ONLY
REFER TO PAGE 5 FOR RIGHT HAND ACCESS
(VIEW FROM ABOVE)

INTAKE



NOTES:
REFER TO SHEET 1 FOR GENERAL NOTES
LEFT HAND ACCESS SHOWN IN ALL VIEWS
HOODS REMOVED FOR CLARITY
EXHAUST AIR LOCATED IN THE SAME POSITION REGARDLESS OF OPTIONS
FLUES LOCATED IN THE SAME POSITION REGARDLESS OF OPTIONS

Desert Aire has a policy of continuous product and quality improvement. Specifications and dimensions are subject to change without notice. This drawing and information contained herein are the exclusive property of the Desert Aire Corporation. Any use detrimental to the interests of Desert Aire is prohibited.

ALL DIMENSIONS ARE IN INCHES
TOLERANCE $\pm 1/8"$

All Dimensions in Inches
All Angles 90°
All outside corners 0.125" fillet
Unless Otherwise Specified

Third Angle Projection

Part weight

Tolerance Unless Otherwise Specified
X.X $\pm .125$
X.XX $\pm .060$
X.XXX $\pm .030$
Angles $\pm 1^\circ$

Drawn ASV Date Released 1/19/2018

Sheet 4/10

Scale NTS

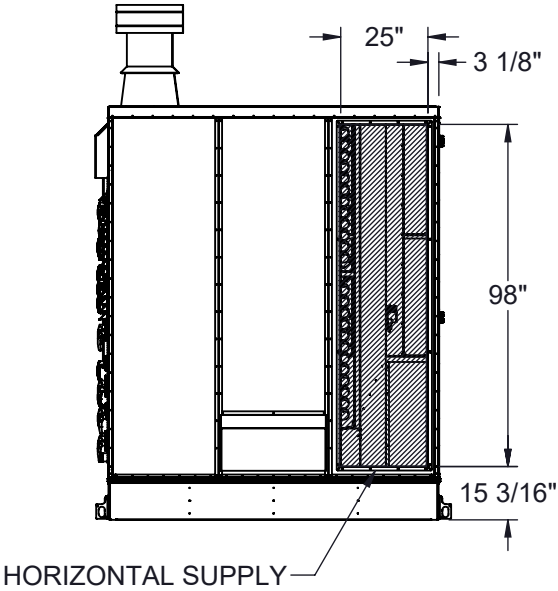
DESERT AIRE
N120 W18485 FREISTADT RD
GERMANTOWN, WI 53022
Tel: (262) 946-7400
Fax: (262) 946-7401

Description SP 60-80 TON SPLIT DUAL GAS HT

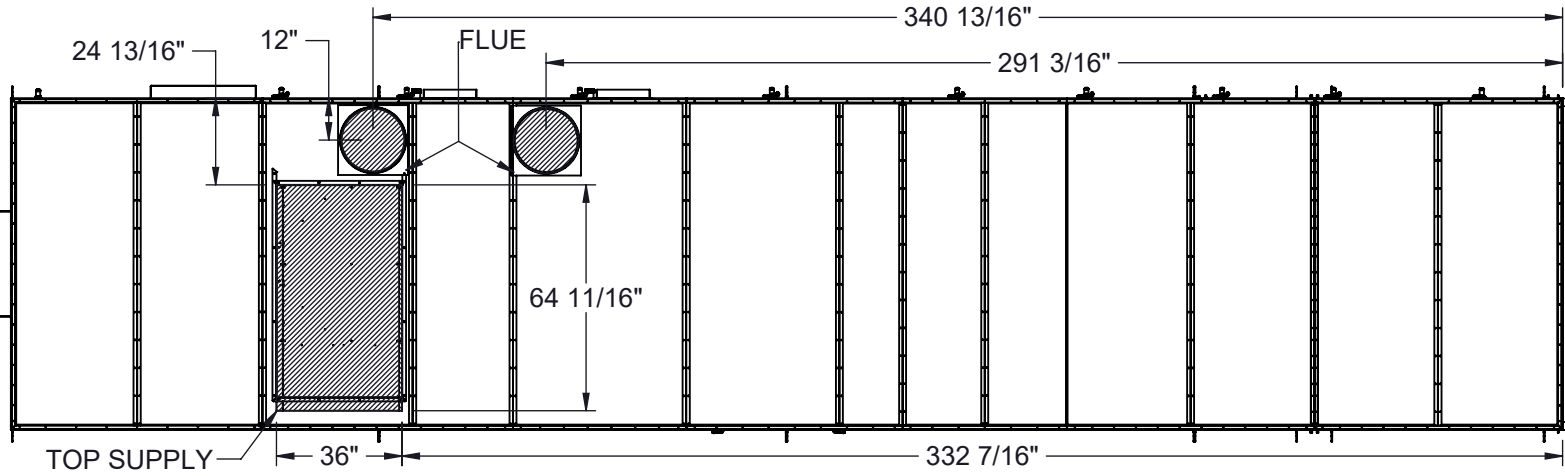
Page Title LH ACCESS DISCHARGE OPTIONS GA

Drawing Number G1000-015

HORIZONTAL SUPPLY OPTION
RIGHT HAND ACCESS OPTION ONLY
REFER TO PAGE 4 FOR LEFT HAND ACCESS
(SIDE VIEW)

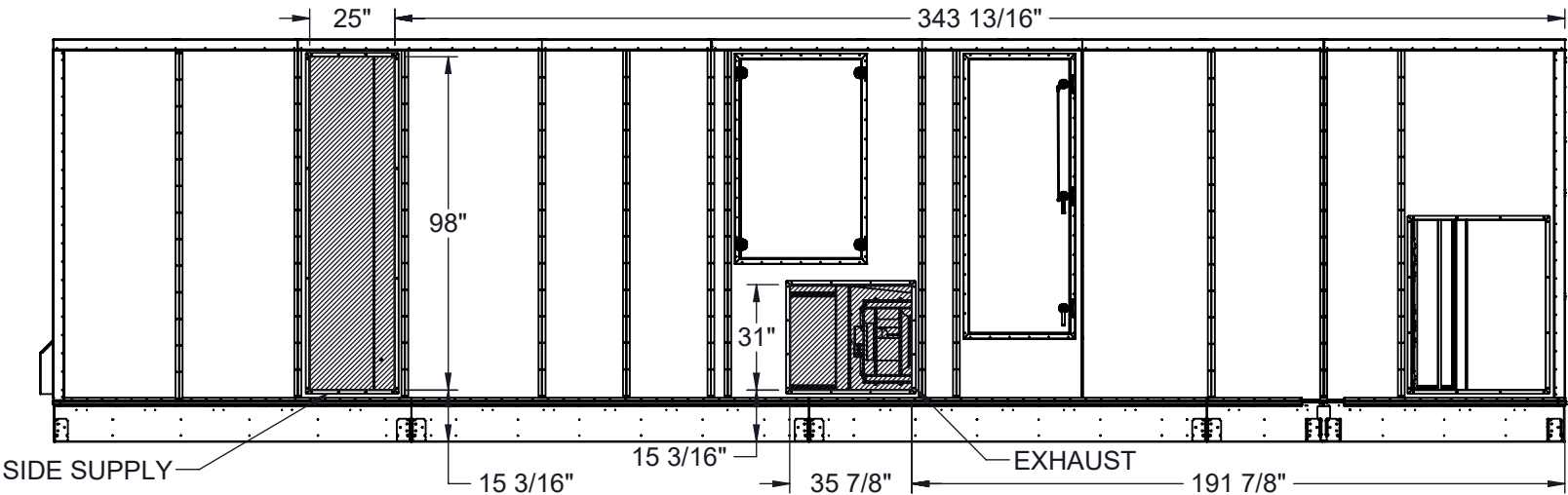


TOP SUPPLY OPTION
RIGHT HAND ACCESS OPTION ONLY
REFER TO PAGE 4 FOR LEFT HAND ACCESS
(TOP VIEW)



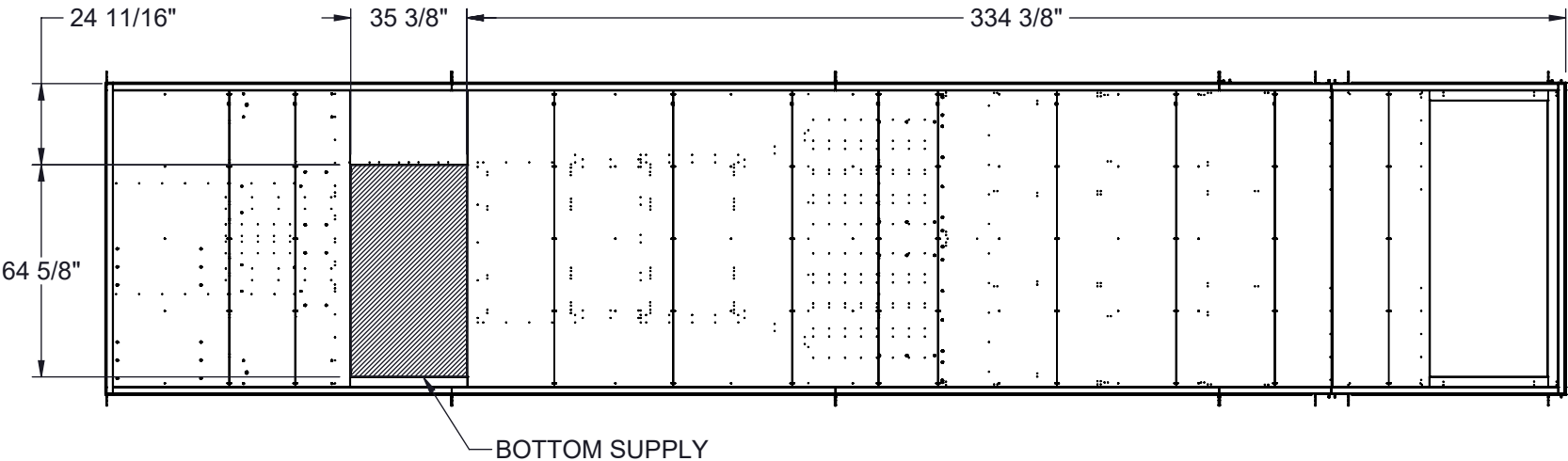
INTAKE

SIDE SUPPLY OPTION
RIGHT HAND ACCESS OPTION ONLY
REFER TO PAGE 4 FOR LEFT HAND ACCESS
(SIDE VIEW)



INTAKE

BOTTOM SUPPLY OPTION
RIGHT HAND ACCESS OPTION ONLY
REFER TO PAGE 4 FOR LEFT HAND ACCESS
(VIEW FROM ABOVE)



INTAKE

NOTES:
REFER TO SHEET 1 FOR GENERAL NOTES
RIGHT HAND ACCESS SHOWN IN ALL VIEWS
HOODS REMOVED FOR CLARITY
EXHAUST AIR LOCATED IN THE SAME POSITION REGARDLESS OF OPTIONS
FLUES LOCATED IN THE SAME POSITION REGARDLESS OF OPTIONS

Desert Aire has a policy of continuous product and quality improvement. Specifications and dimensions are subject to change without notice. This drawing and information contained herein are the exclusive property of the Desert Aire Corporation. Any use detrimental to the interests of Desert Aire is prohibited.

ALL DIMENSIONS ARE IN INCHES
TOLERANCE $\pm 1/8"$

All Dimensions in Inches
All Angles 90°
All outside corners 0.125" fillet
Unless Otherwise Specified



Third Angle Projection

Part weight

Tolerance Unless
Otherwise Specified
X.X $\pm .125$
X.XX $\pm .060$
X.XXX $\pm .030$
Angles $\pm 1^\circ$

Drawn
ASV
Date Released
1/19/2018

Sheet
5/10

Scale
NTS

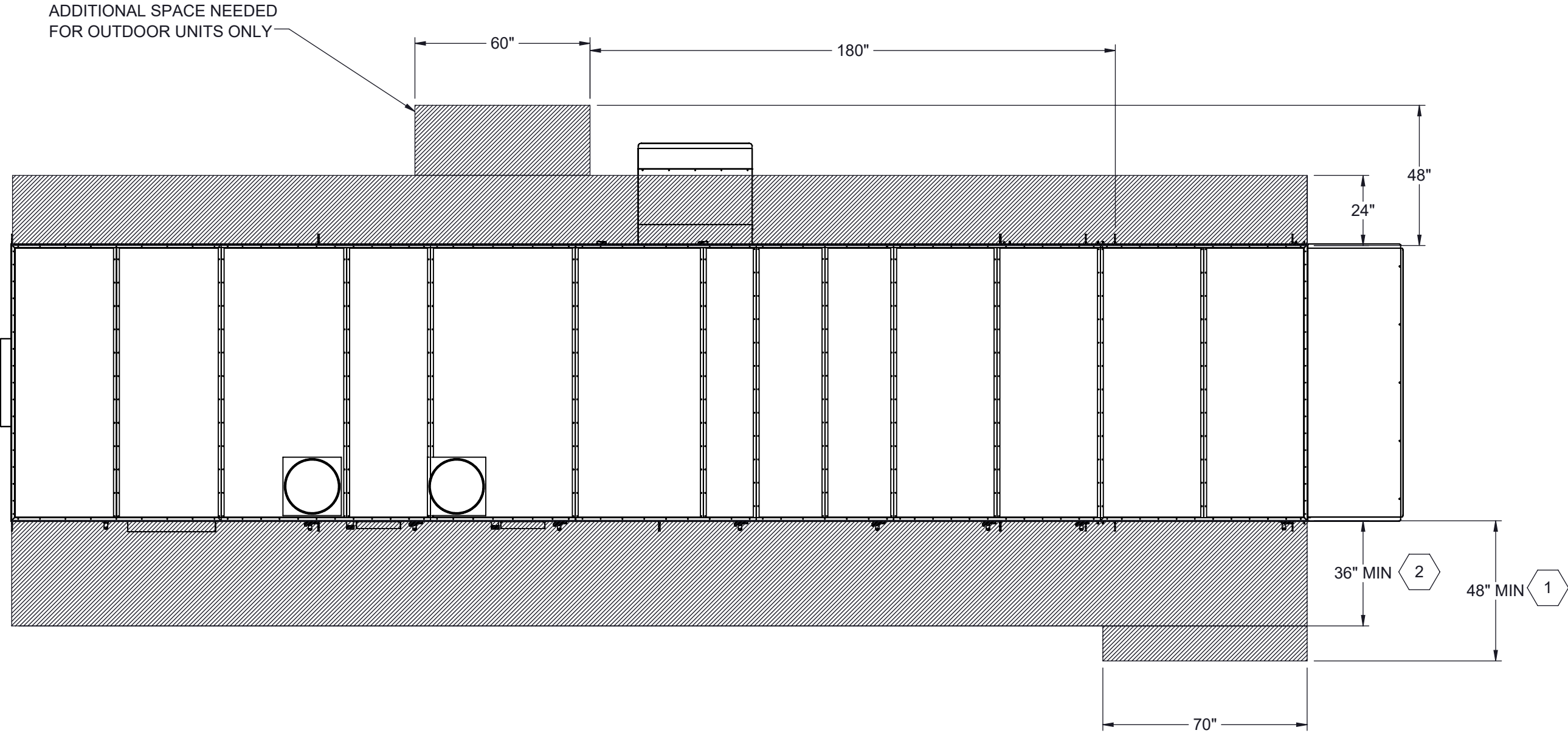


N120 W18485 FREISTADT RD
GERMANTOWN, WI 53022
Tel: (262) 946-7400
Fax: (262) 946-7401

Description
SP 60-80 TON SPLIT DUAL GAS HT

Page Title
RH ACCESS DISCHARGE OPTIONS GA



Drawing Number
G1000-015



1 96" RECOMMENDED FOR FILTER ACCESS.

2 120" CLEARANCE ON ACCESS SIDE RECOMMENDED FOR FAN AND COIL SERVICE

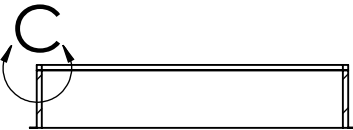
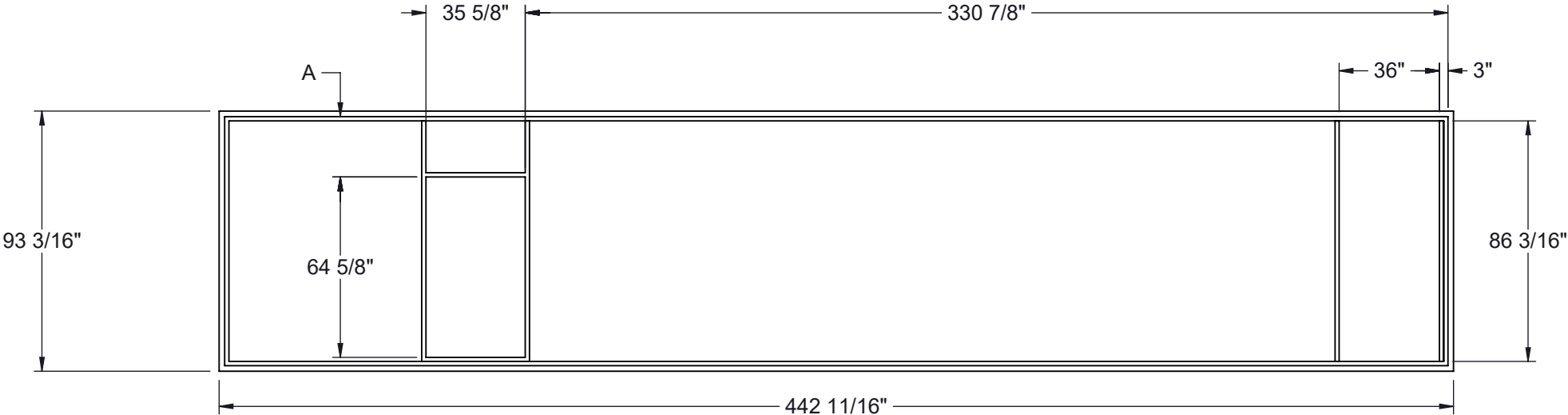
NOTES:
REFER TO SHEET 1 FOR GENERAL NOTES
LEFT HAND ACCESS SHOWN IN ALL VIEWS
RIGHT HAND ACCESS OPTIONS LOCATED WITH SAME DIMENSIONS ON OPPOSITE SIDE UNLESS OTHERWISE SPECIFIED

Desert Aire has a policy of continuous product and quality improvement. Specifications and dimensions are subject to change without notice. This drawing and information contained herein are the exclusive property of the Desert Aire Corporation. Any use detrimental to the interests of Desert Aire is prohibited.		All Dimensions in Inches All Angles 90° All outside corners 0.125" fillet Unless Otherwise Specified		Tolerance Unless Otherwise Specified X.X ±.125 X.XX ±.060 X.XXX ±.030 Angles ±1°		 N120 W18485 FREISTADT RD GERMANTOWN, WI 53022 Tel: (262) 946-7400 Fax: (262) 946-7401	
ALL DIMENSIONS ARE IN INCHES TOLERANCE ± 1/8"		 Third Angle Projection		Drawn	Date Released	Description	
				ASV	1/19/2018	SP 60-80 TON SPLIT DUAL GAS HT	
		Part weight		Sheet	6/10	Page Title	
				Scale	NTS	Rev.	Drawing Number
						7	G1000-015

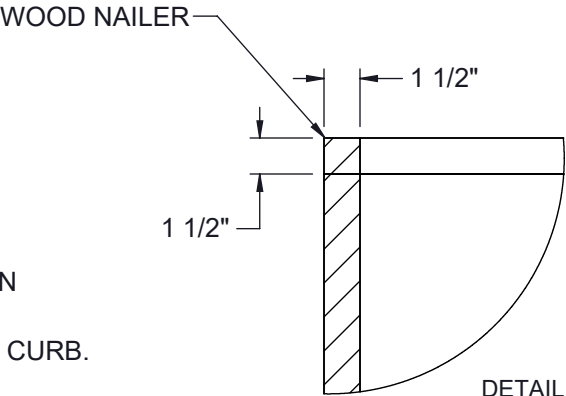
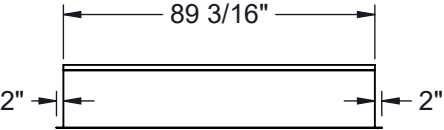
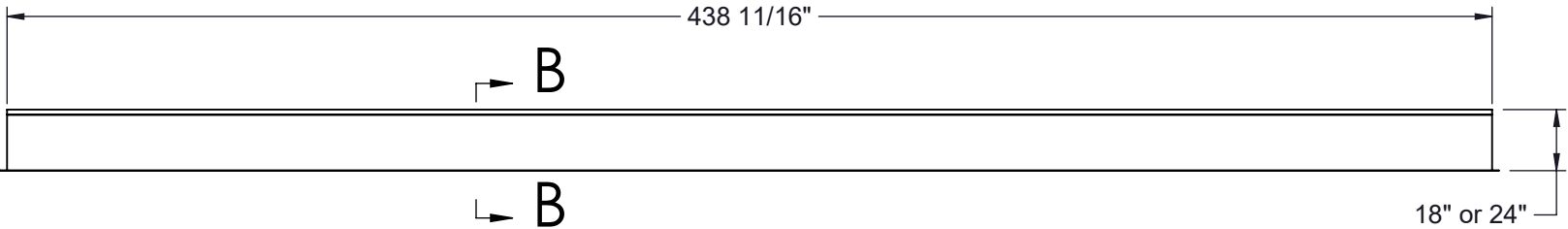
NOTES:
REFER TO SHEET 1 FOR GENERAL NOTES

- 1. 14 GA GALVANIZED STEEL CONSTRUCTION
- 2. PRIME PAINTED AFTER FABRICATION
- 3. PRESSURE TREATED WOOD NAILERS
- 4. 1-1/2" THICK 3LB/FT^3 FIBERGLASS PERIMETER INSULATION
- 5. INTERNAL ANGLE REINFORCEMENT
- 6. CURB TO BE SHIPPED KNOCKED DOWN
- 7. NUMBER OF EQUIPMENT SUPPORTS MAY VARY

UNIT TON	ACCESS	18" CURB	24" CURB	A
60-80	RIGHT HAND	CB-80NGR4-18	CB-80NGR4-24	3"
60-80	LEFT HAND	CB-80NGL4-18	CB-80NG64-24	22 9/16"



SECTION B-B



DETAIL C
SCALE 1 : 8

NUMBER AND LOCATION OF CROSS SUPPORTS IS DEPENDANT UPON THE GUAGE OF MATERIAL USED TO CONSTRUCT THE CURB, DUCT SUPPORT CONFIGURATION LENGTH OF CURB, AND WIDTH OF CURB. INSTALLATION INSTRUCTIONS INCLUDED WITH CURB SHIPMENT INDICATE THE REQUIRED POSITION FOR FIELD ASSEMBLED CURBS.

Desert Aire has a policy of continuous product and quality improvement. Specifications and dimensions are subject to change without notice. This drawing and information contained herein are the exclusive property of the Desert Aire Corporation. Any use detrimental to the interests of Desert Aire is prohibited.

ALL DIMENSIONS ARE IN INCHES
TOLERANCE ± 1/8"

All Dimensions in Inches
All Angles 90°
All outside corners 0.125" fillet
Unless Otherwise Specified

Third Angle Projection

Part weight

Tolerance Unless Otherwise Specified
X.X ±.125
X.XX ±.060
X.XXX ±.030
Angles ±1°

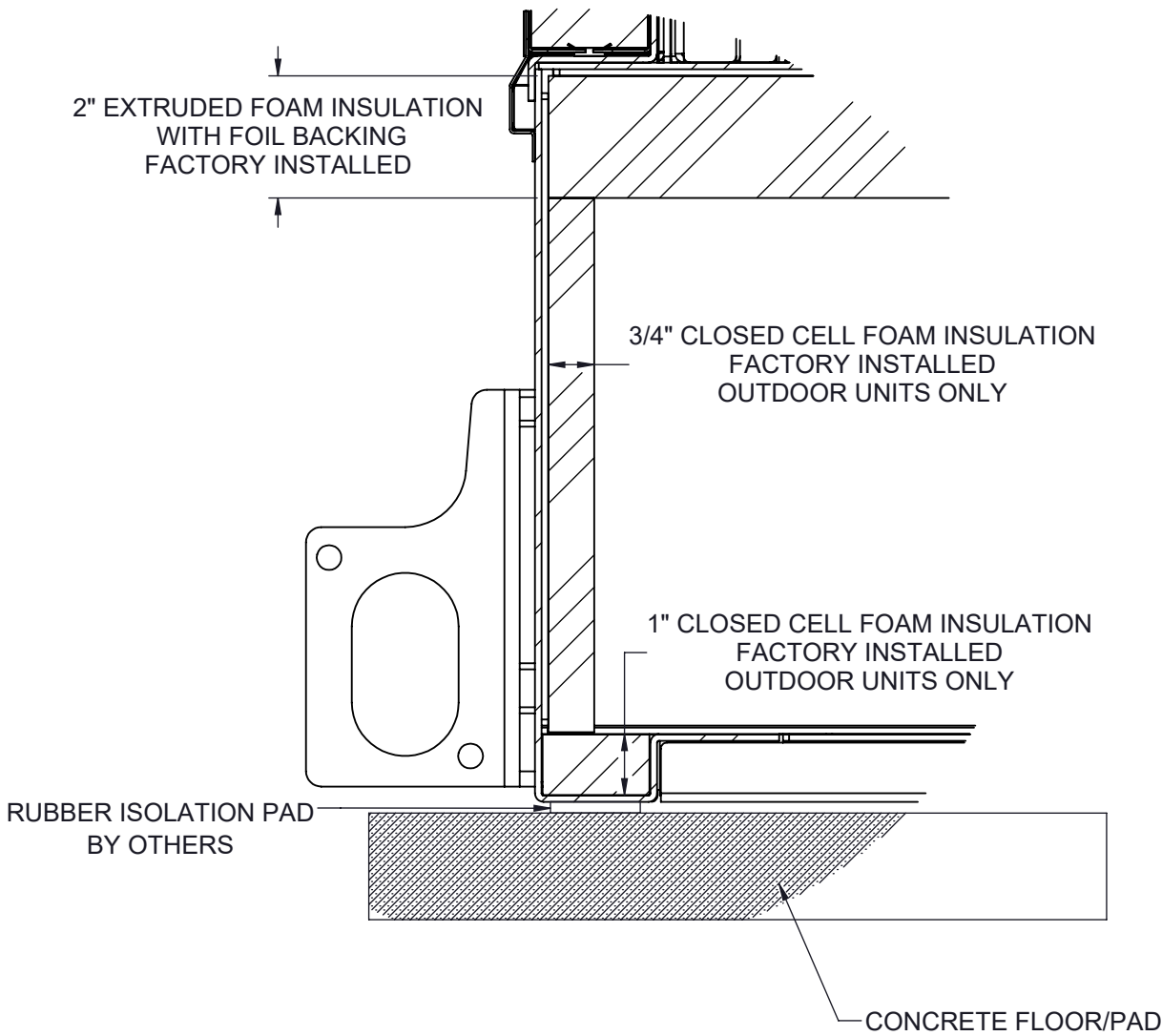
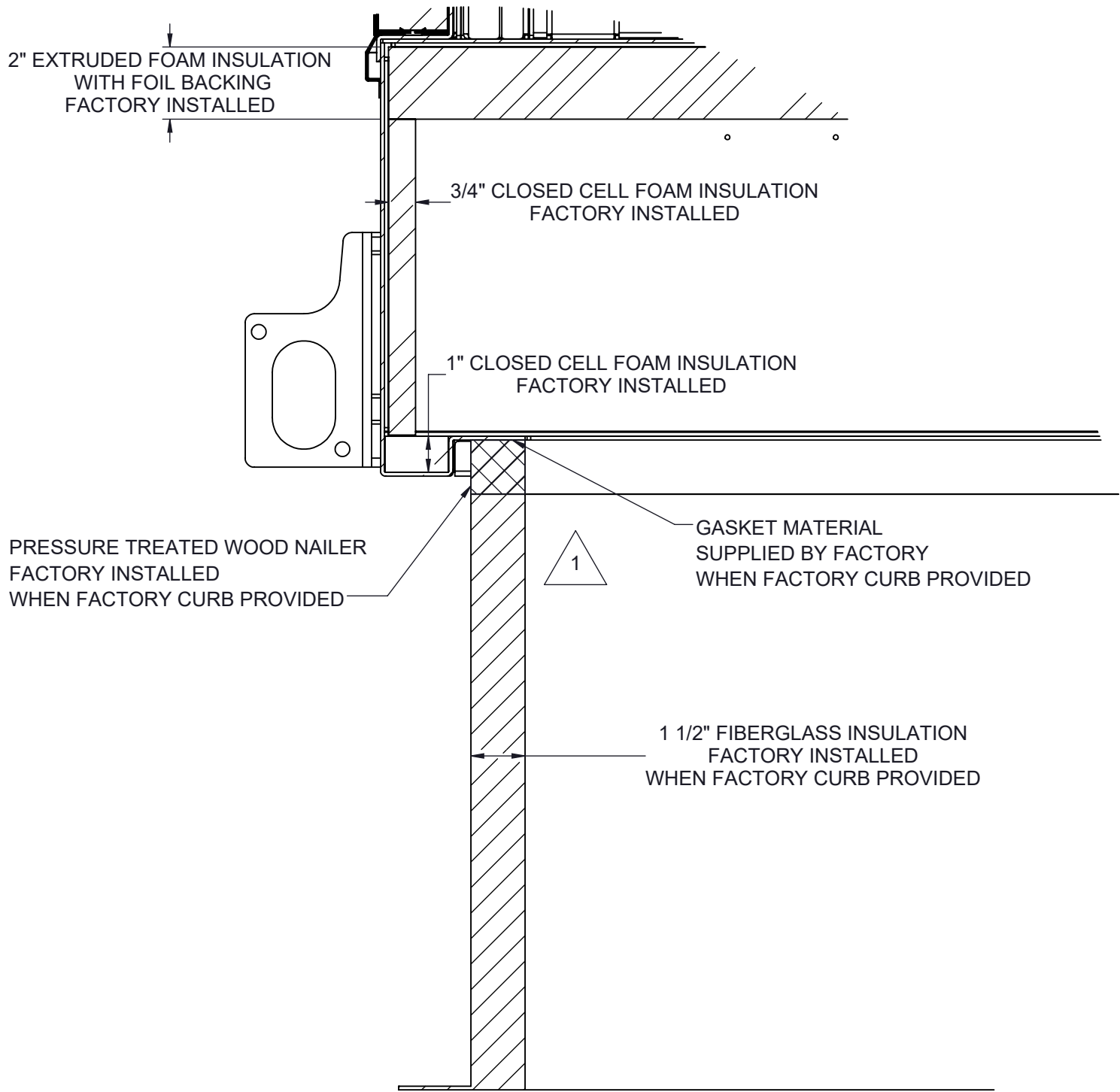
Drawn	ASV	Date Released	1/19/2018	
Sheet	7/10			
Scale	NTS		Rev.	7

N120 W18485 FREISTADT RD
GERMANTOWN, WI 53022
Tel: (262) 946-7400
Fax: (262) 946-7401

Description	SP 60-80 TON SPLIT DUAL GAS HT
Page Title	CURB DETAIL GA
Drawing Number	G1000-015

CURB MOUNT

PAD MOUNT



1 ALL EXPOSED METAL TO BE SPRAY FOAM INSULATION AFTER INSTALLATION

NOTES:
REFER TO SHEET 1 FOR GENERAL NOTES
SEE SHEET 7 NOTES FOR CURB SPECIFICATIONS

Desert Aire has a policy of continuous product and quality improvement. Specifications and dimensions are subject to change without notice. This drawing and information contained herein are the exclusive property of the Desert Aire Corporation. Any use detrimental to the interests of Desert Aire is prohibited.

ALL DIMENSIONS ARE IN INCHES
TOLERANCE $\pm 1/8"$

All Dimensions in Inches
All Angles 90°
All outside corners 0.125" fillet
Unless Otherwise Specified



Third Angle Projection

Part weight

Tolerance Unless
Otherwise Specified
X.X $\pm .125$
X.XX $\pm .060$
X.XXX $\pm .030$
Angles $\pm 1^\circ$

Drawn
ASV
Date Released
1/19/2018

Sheet
8/10

Scale
NTS



N120 W18485 FREISTADT RD
GERMANTOWN, WI 53022
Tel: (262) 946-7400
Fax: (262) 946-7401

Description
SP 60-80 TON SPLIT DUAL GAS HT

Page Title
MOUNTING DETAILS GA

Drawing Number
G1000-015

G1000-015

SHIP LOOSE ITEMS	
------------------	--

FLUE
OUTDOOR UNITS ONLY

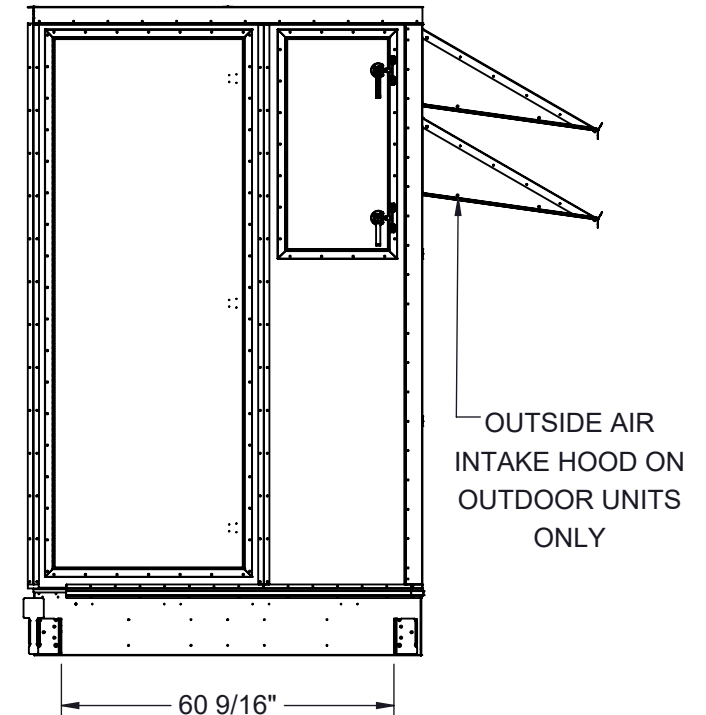
OUTDOOR UNITS ONLY		
DA PART NO	DESCRIPTION	QTY
515-059	B-VENT 12" X 36"	2
515-058	FLASHING 12"	2
525-057	VENT CAP 12"	2
515-056	COLLAR 12"	2

EXHAUST HOOD
OUTDOOR UNITS ONLY

OUTDOOR UNITS ONLY		
DA PART NO	DESCRIPTION	QTY
HOOD	EXHAUST ASSEMBLY	1
807-023	SCREW #8-18X1/2 SS	36
990-105	CAULK WHITE	1

SECTION ITEMS		
DATE	DESCRIPTION	AMOUNT
12/1/2023	Initial deposit	1000.00
12/15/2023	Transfer to savings	250.00
1/1/2024	Monthly deposit	150.00
1/15/2024	Transfer to checking	100.00
2/1/2024	Monthly deposit	150.00
2/15/2024	Transfer to savings	100.00
3/1/2024	Monthly deposit	150.00
3/15/2024	Transfer to checking	100.00
3/31/2024	Monthly deposit	150.00
4/1/2024	Monthly deposit	150.00
4/15/2024	Transfer to savings	100.00
4/30/2024	Monthly deposit	150.00
5/1/2024	Monthly deposit	150.00
5/15/2024	Transfer to savings	100.00
5/31/2024	Monthly deposit	150.00
6/1/2024	Monthly deposit	150.00
6/15/2024	Transfer to savings	100.00
6/30/2024	Monthly deposit	150.00
7/1/2024	Monthly deposit	150.00
7/15/2024	Transfer to savings	100.00
7/31/2024	Monthly deposit	150.00
8/1/2024	Monthly deposit	150.00
8/15/2024	Transfer to savings	100.00
8/31/2024	Monthly deposit	150.00
9/1/2024	Monthly deposit	150.00
9/15/2024	Transfer to savings	100.00
9/30/2024	Monthly deposit	150.00
10/1/2024	Monthly deposit	150.00
10/15/2024	Transfer to savings	100.00
10/31/2024	Monthly deposit	150.00
11/1/2024	Monthly deposit	150.00
11/15/2024	Transfer to savings	100.00
11/30/2024	Monthly deposit	150.00
12/1/2024	Monthly deposit	150.00
12/15/2024	Transfer to savings	100.00
12/31/2024	Monthly deposit	150.00
1/1/2025	Monthly deposit	150.00
1/15/2025	Transfer to savings	100.00
1/31/2025	Monthly deposit	150.00
2/1/2025	Monthly deposit	150.00
2/15/2025	Transfer to savings	100.00
2/28/2025	Monthly deposit	150.00
3/1/2025	Monthly deposit	150.00
3/15/2025	Transfer to savings	100.00
3/31/2025	Monthly deposit	150.00
4/1/2025	Monthly deposit	150.00
4/15/2025	Transfer to savings	100.00
4/30/2025	Monthly deposit	150.00
5/1/2025	Monthly deposit	150.00
5/15/2025	Transfer to savings	100.00
5/31/2025	Monthly deposit	150.00
6/1/2025	Monthly deposit	150.00
6/15/2025	Transfer to savings	100.00
6/30/2025	Monthly deposit	150.00
7/1/2025	Monthly deposit	150.00
7/15/2025	Transfer to savings	100.00
7/31/2025	Monthly deposit	150.00
8/1/2025	Monthly deposit	150.00
8/15/2025	Transfer to savings	100.00
8/31/2025	Monthly deposit	150.00
9/1/2025	Monthly deposit	150.00
9/15/2025	Transfer to savings	100.00
9/30/2025	Monthly deposit	150.00
10/1/2025	Monthly deposit	150.00
10/15/2025	Transfer to savings	100.00
10/31/2025	Monthly deposit	150.00
11/1/2025	Monthly deposit	150.00
11/15/2025	Transfer to savings	100.00
11/30/2025	Monthly deposit	150.00
12/1/2025	Monthly deposit	150.00
12/15/2025	Transfer to savings	100.00
12/31/2025	Monthly deposit	150.00
1/1/2026	Monthly deposit	150.00
1/15/2026	Transfer to savings	100.00
1/31/2026	Monthly deposit	150.00
2/1/2026	Monthly deposit	150.00
2/15/2026	Transfer to savings	100.00
2/28/2026	Monthly deposit	150.00
3/1/2026	Monthly deposit	150.00
3/15/2026	Transfer to savings	100.00
3/31/2026	Monthly deposit	150.00
4/1/2026	Monthly deposit	150.00
4/15/2026	Transfer to savings	100.00
4/30/2026	Monthly deposit	150.00
5/1/2026	Monthly deposit	150.00
5/15/2026	Transfer to savings	100.00
5/31/2026	Monthly deposit	150.00
6/1/2026	Monthly deposit	150.00
6/15/2026	Transfer to savings	100.00
6/30/2026	Monthly deposit	150.00
7/1/2026	Monthly deposit	150.00
7/15/2026	Transfer to savings	100.00
7/31/2026	Monthly deposit	150.00
8/1/2026	Monthly deposit	150.00
8/15/2026	Transfer to savings	100.00
8/31/2026	Monthly deposit	

DA PART NO	DESCRIPTION	QTY
807-023	SCREW #8-18X1/2 SS	172
807-007	BOLT 3/8-16X1 SS	4
807-008	WASHER 3/8 FLAT SS	4
807-009	WASHER LOCK SPLIT 3/8 SS	4
807-010	NUT 3/8-16 SS	4
807-223	SCREW #10-32x1/2 MACHINE HEX	4
950-089	TAPER SEAM SEALER 2"	50 FT (1 ROLL)
950-090	TAPE SEAM SEALER 4"	40 INCHES
990-105	CAULK WHITE	2
352-098-040	BASE Z CVR SIDE,MID SEC	2
STRIPS	2.5" X 103" METAL SIDE STRIPS	2
STRIPS	2.5" X 92 1/2" METAL TOP STRIPS	1
STRIPS	1" X 3" X 24" METAL CORNER STRIPS	2



— 60 9/16" —→

Technical drawing of a bracket. The drawing shows a side view of the bracket with the following dimensions:

- Top horizontal flange thickness: $\frac{3}{4}$ "
- Vertical distance from the top flange to the center of the hole: 3"
- Horizontal distance from the vertical support to the center of the hole: $1\frac{3}{4}$ "
- Radius of the hole: $\frac{3}{4}$ "

Drawing Number	G1000-015
----------------	-----------

NOTES:
REFER TO SHEET 1 FOR GENERAL NOTES AND FLUE/HOOD DETAILS
UNIT SHIPPED IN TWO SECTIONS SEE I/O MANUAL FOR ASSEMBLY DETAILS

G1000-015

FLUE

OUTDOOR UNITS ONLY

DA PART NO	DESCRIPTION	QTY
515-059	B-VENT 12" X 36"	2
515-058	FLASHING 12"	2
525-057	VENT CAP 12"	2
515-056	COLLAR 12"	2

EXHAUST HOOD

OUTDOOR UNITS ONLY

DA PART NO	DESCRIPTION	QTY
HOOD	EXHAUST ASSEMBLY	1
807-023	SCREW #8-18X1/2 SS	36
990-105	CAULK WHITE	1

SECTION ITEMS

DA PART NO	DESCRIPTION	QTY
807-023	SCREW #8-18X1/2 SS	1032
807-007	BOLT 3/8-16X1 SS	24
807-008	WASHER 3/8 FLAT SS	24
807-009	WASHER LOCK SPLIT 3/8 SS	24
807-010	NUT 3/8-16 SS	24
807-223	SCREW #10-32x1/2 MACHINE HEX	24
950-089	TAPER SEAM SEALER 2"	200 FT (4 ROLLS)
950-090	TAPE SEAM SEALER 4"	20 FT
990-105	CAULK WHITE	10
352-098-040	BASE Z CVR SIDE,MID SEC	12
STRIPS	2.5" X 103" METAL SIDE STRIPS	12
STRIPS	2.5" X 92 1/2" METAL TOP STRIPS	6
STRIPS	1" X 3" X 24" METAL CORNER STRIPS	12

2

1

OUTSIDE AIR INTAKE HOOD ON OUTDOOR UNITS ONLY

SHIPPING AND LIFTING DETAILS FOR MULTI-SECTION CONSTRUCTION OPTION ONLY

1

BACKDRAFT DAMPER OPTION ADDS AN ADDITIONAL 9" TO FAN SECTION LENGTH

2

REMOTE CONDENSER/WATER CONNECTIONS WILL ADD AN ADDITION MAXIMUM OF 8"

Desert Aire has a policy of continuous product and quality improvement. Specifications and dimensions are subject to change without notice. This drawing and information contained herein are the exclusive property of the Desert Aire Corporation. Any use detrimental to the interests of Desert Aire is prohibited.

ALL DIMENSIONS ARE IN INCHES
TOLERANCE ± 1/8"

All Dimensions in Inches
All Angles 90°
All outside corners 0.125" fillet
Unless Otherwise Specified

Third Angle Projection

Part weight

Tolerance Unless Otherwise Specified
X.X ±.125
X.XX ±.060
X.XXX ±.030
Angles ±1°

Drawn
ASV

Date Released
1/19/2018

Description
SP 60-80 TON SPLIT DUAL GAS HT

Sheet
10/10

Scale
NTS

Rev.
7

Page Title
SECTIONED LIFTING DETAILS GA

Drawing Number
G1000-015

NOTES:

REFER TO SHEET 1 FOR GENERAL NOTES AND FLUE/HOOD DETAILS

UNIT SHIPPED IN SEVEN SECTIONS SEE I/O MANUAL FOR ASSEMBLY DETAILS