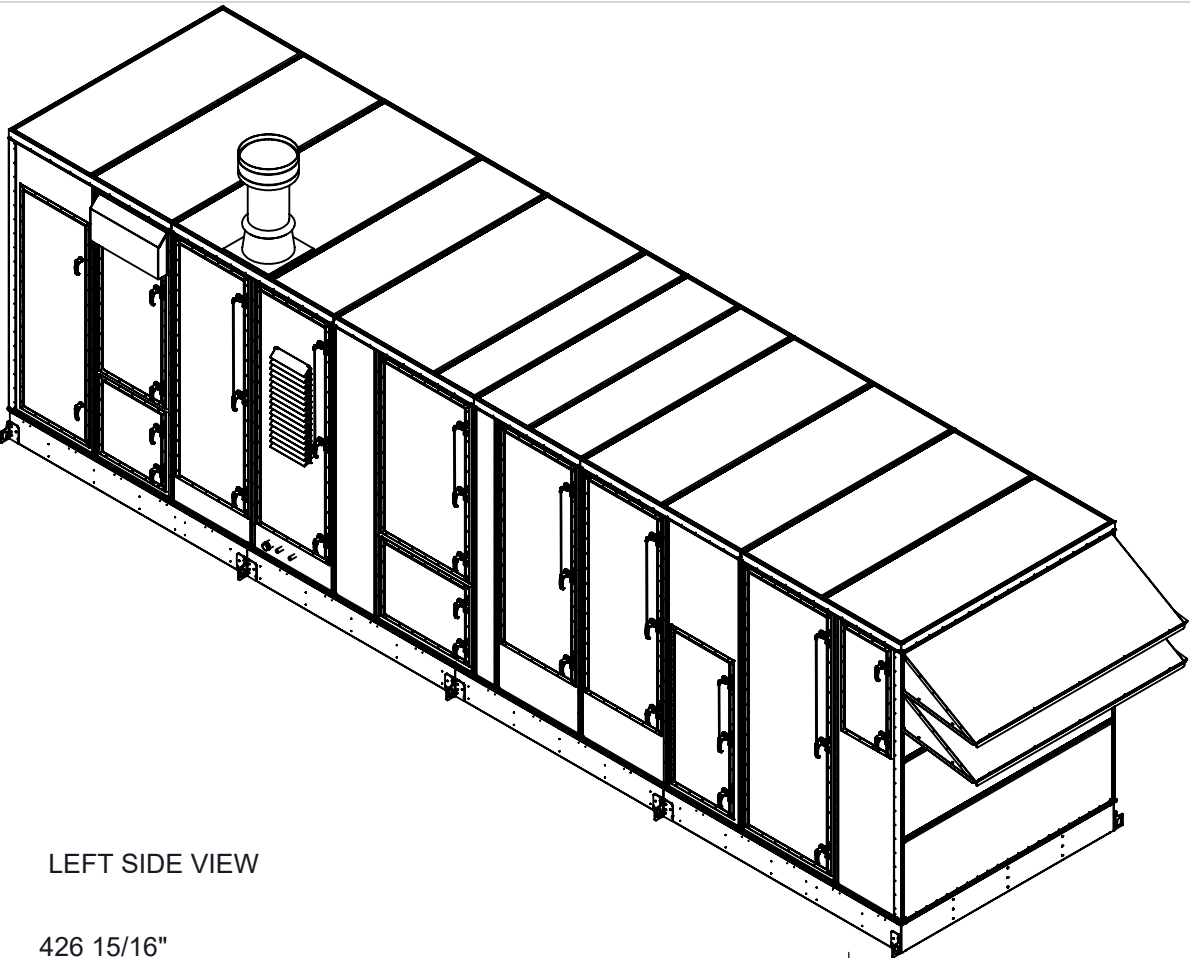
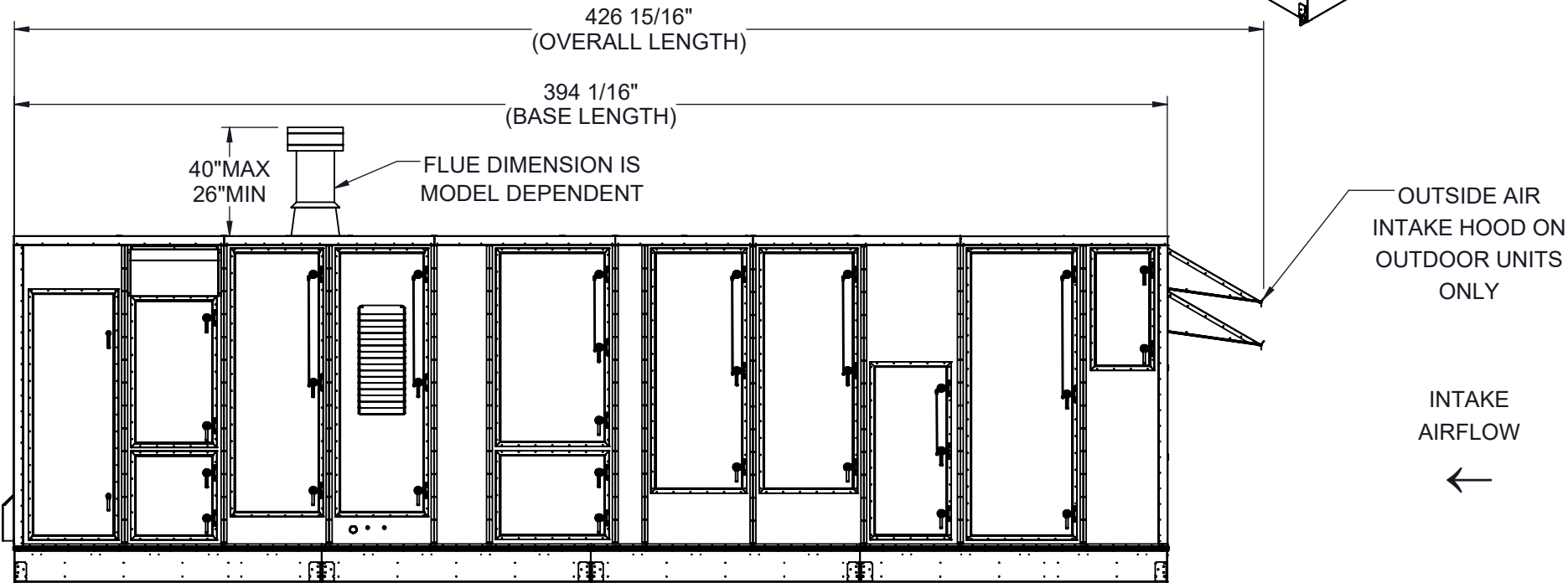
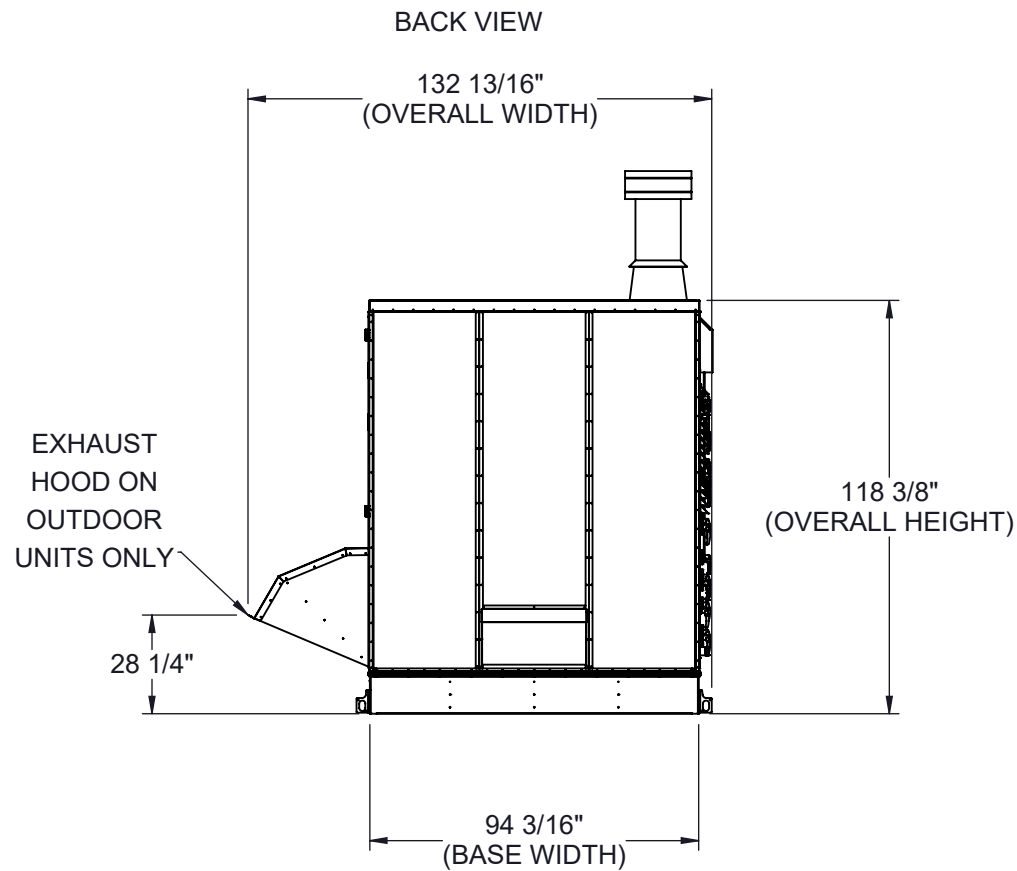


GENERAL NOTES FOR APPLICABLE SHEETS:

LEFT HAND ACCESS SHOWN IN ALL VIEWS  
RIGHT HAND ACCESS OPTIONS LOCATED WITH SAME DIMENSIONS ON OPPOSITE SIDE UNLESS OTHERWISE SPECIFIED  
WEIGHTS SHOWN REFLECT FULLY OPTIONED ESTIMATED UNIT WEIGHT



LEFT SIDE VIEW



UNIT SIZE	ESTIMATED WEIGHT (lbs.)
60 - 80 TONS	19500

Desert Aire has a policy of continuous product and quality improvement. Specifications and dimensions are subject to change without notice. This drawing and information contained herein are the exclusive property of the Desert Aire Corporation. Any use detrimental to the interests of Desert Aire is prohibited.

ALL DIMENSIONS ARE IN INCHES  
TOLERANCE  $\pm 1/8"$

All Dimensions in Inches  
All Angles 90°  
All outside corners 0.125" fillet  
Unless Otherwise Specified



Third Angle Projection

Part weight

Tolerance Unless Otherwise Specified  
X.X  $\pm .125$   
X.XX  $\pm .060$   
X.XXX  $\pm .030$   
Angles  $\pm 1^\circ$

Drawn **ASV** Date Released **1/19/2018**

Sheet **1/10**

Scale **NTS**



N120 W18485 FREISTADT RD  
GERMANTOWN, WI 53022  
Tel: (262) 946-7400  
Fax: (262) 946-7401

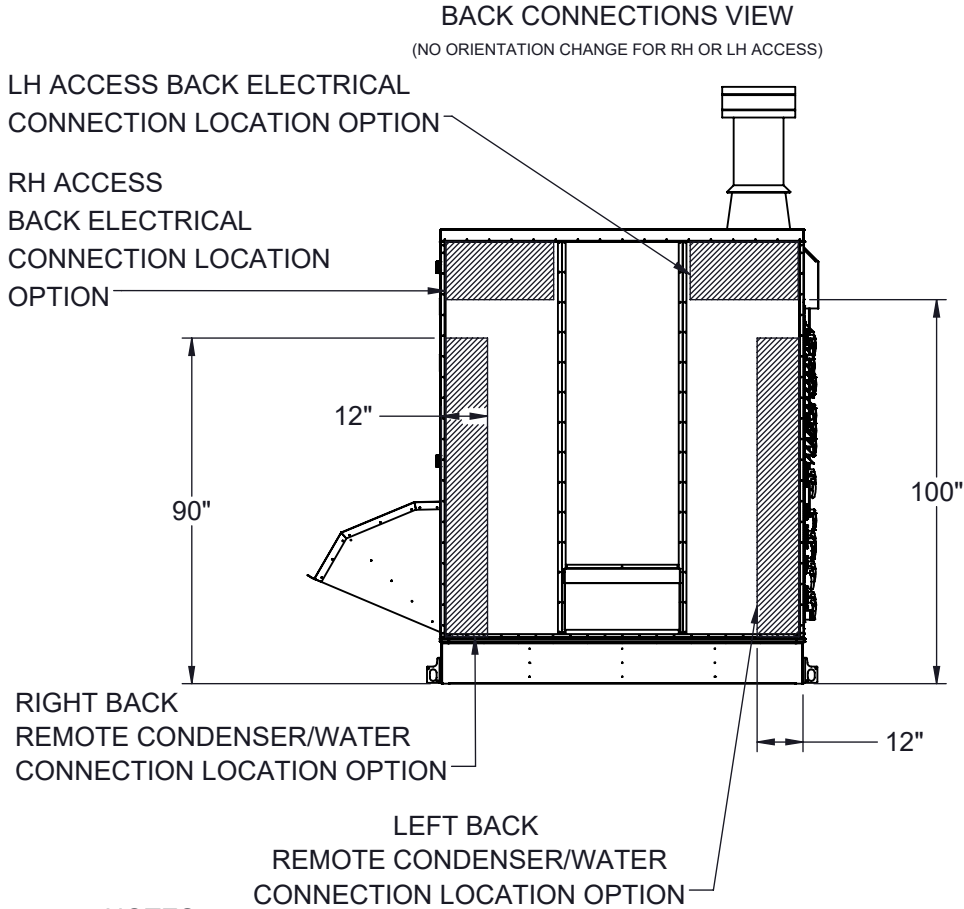
Description **SP 60-80 TON SPLIT SINGLE GAS**

Page Title **GENERAL ARRANGEMENT**

Drawing Number **G1000-013**

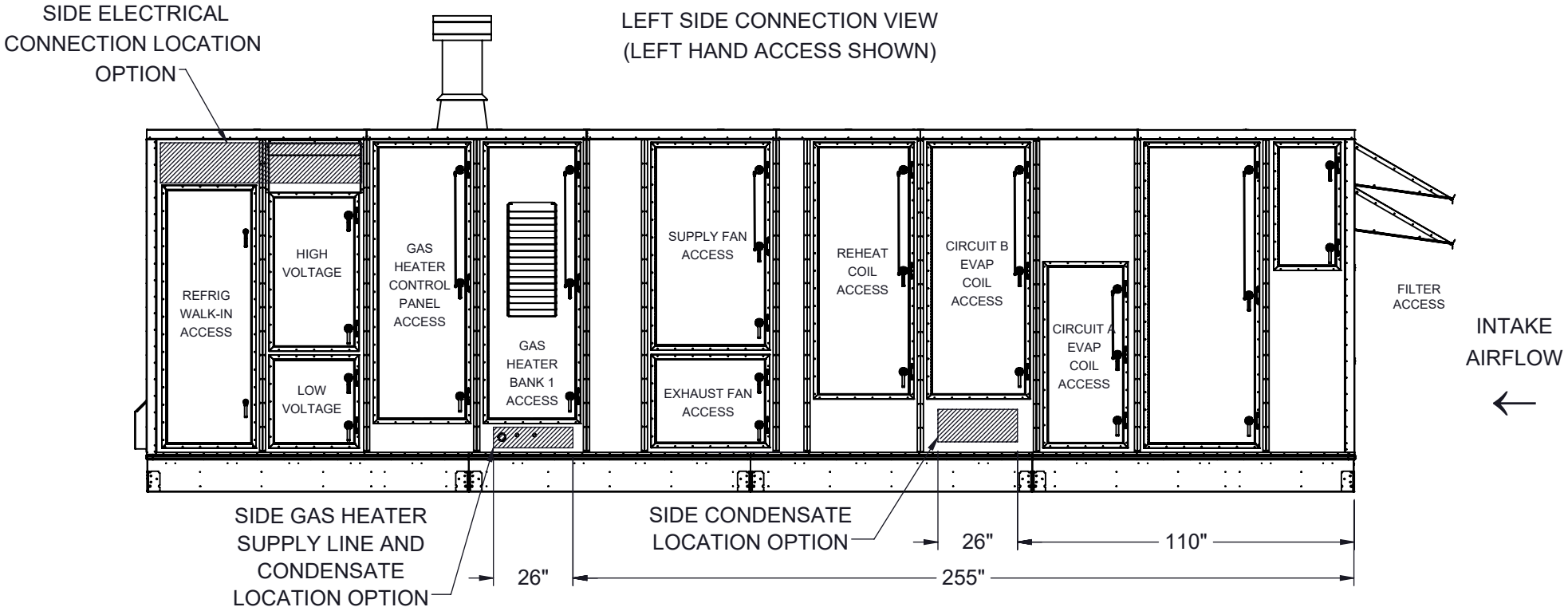
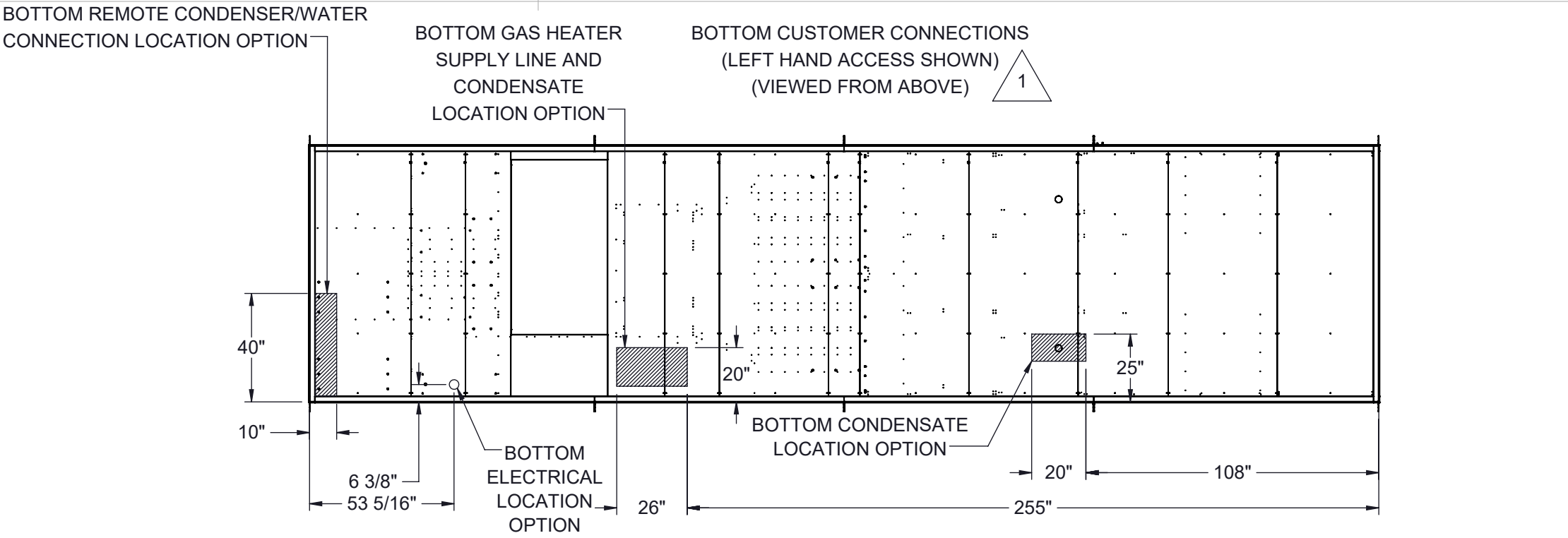
Rev. **7**

CUSTOMER CONNECTION LINE SIZE (in.)		
UNIT SIZE	60 TONS	70-80 TONS
CONDENSATE (PVC)	1 1/2	1 1/2
GAS CONDENSATE (PVC)	1	1
GAS (MNPT)	2	2
DISCHARGE LINE CIRCUIT A (CU)	1 1/8	1 5/8
LIQUID LINE CIRCUIT A (CU)	7/8	1 1/8
DISCHARGE LINE CIRCUIT B (CU)	1 5/8	1 5/8
LIQUID LINE CIRCUIT B (CU)	1 1/8	1 1/8
COOLING LOOP LINE (CU)	3	3
POOL WATER LINE CIRCUIT A (CPVC)	2	3
POOL WATER LINE CIRCUIT B (CPVC)	3	3



NOTES:  
REFER TO SHEET 1 FOR GENERAL NOTES  
LEFT HAND ACCESS SHOWN IN ALL VIEWS  
RIGHT HAND ACCESS OPTIONS LOCATED WITH SAME DIMENSIONS ON OPPOSITE SIDE UNLESS OTHERWISE SPECIFIED

FILTER INFORMATION						
UNIT SIZE	OA QTY	OA SIZE	REPLACEMENT PART NUMBER	RA QTY	RA SIZE	REPLACEMENT PART NUMBER
60-80 TONS	15	18 X 24 X 4	870-056	15	18 X 24 X 4	870-056



Desert Aire has a policy of continuous product and quality improvement. Specifications and dimensions are subject to change without notice. This drawing and information contained herein are the exclusive property of the Desert Aire Corporation. Any use detrimental to the interests of Desert Aire is prohibited.

ALL DIMENSIONS ARE IN INCHES  
TOLERANCE ± 1/8"

All Dimensions in Inches  
All Angles 90°  
All outside corners 0.125" fillet  
Unless Otherwise Specified

Third Angle Projection

Part weight

Tolerance Unless Otherwise Specified  
X.X ±.125  
X.XX ±.060  
X.XXX ±.030  
Angles ±1°

Drawn **ASV** Date Released **1/19/2018**

Sheet **2/10**

Scale **NTS** Rev. **7**

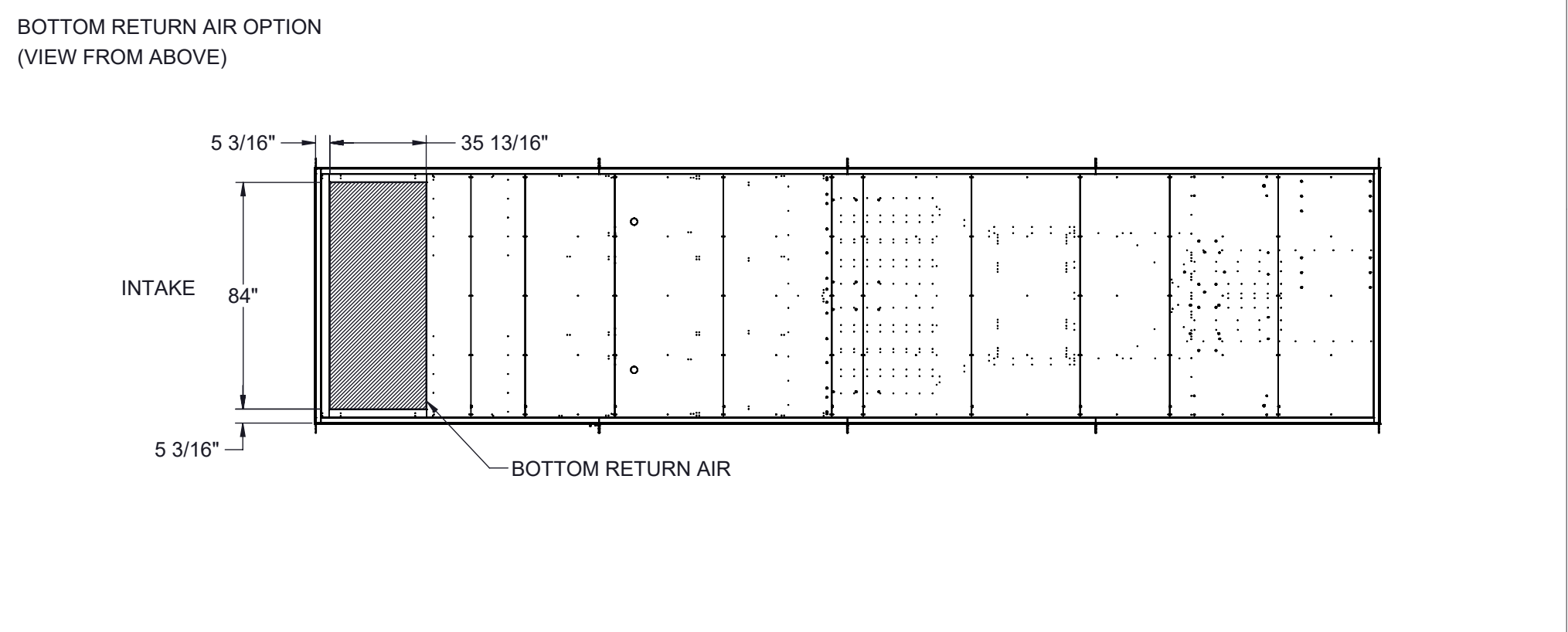
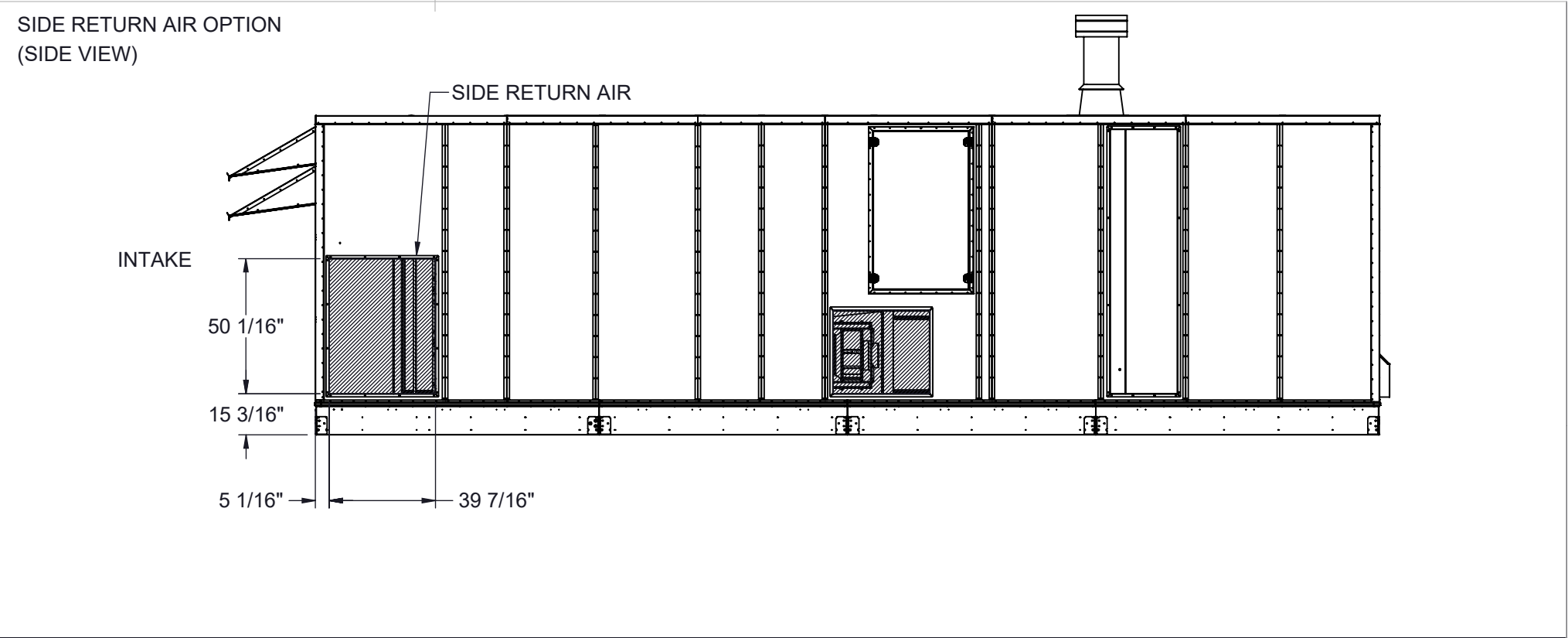
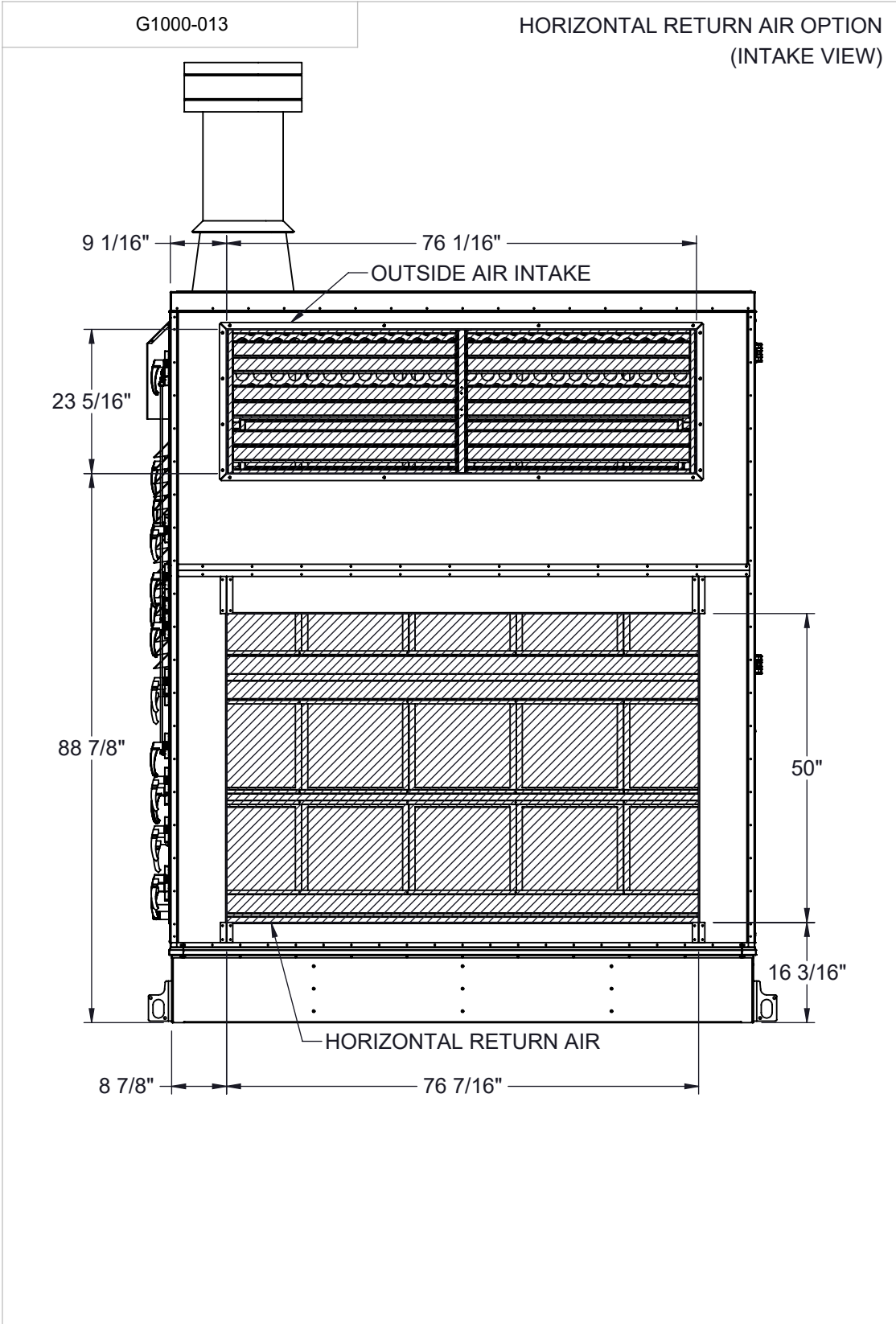
**DESERT AIRE**

N120 W18485 FREISTADT RD  
GERMANTOWN, WI 53022  
Tel: (262) 946-7400  
Fax: (262) 946-7401



Description **SP 60-80 TON SPLIT SINGLE GAS**

Page Title **CUSTOMER INTERFACE GA**

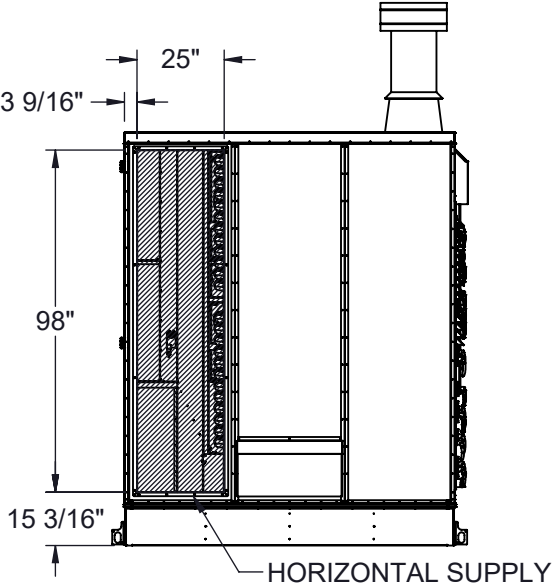
Drawing Number **G1000-013**



NOTES:  
REFER TO SHEET 1 FOR GENERAL NOTES  
HOODS REMOVED FOR CLARITY  
ACCESS SIDE RETURN AIR OPTION SELECTION WILL SHIFT FILTER SECTION DOORS TO NON-ACCESS SIDE  
OUTSIDE AIR INTAKE LOCATED IN THE SAME POSITION REGARDLESS OF OPTIONS

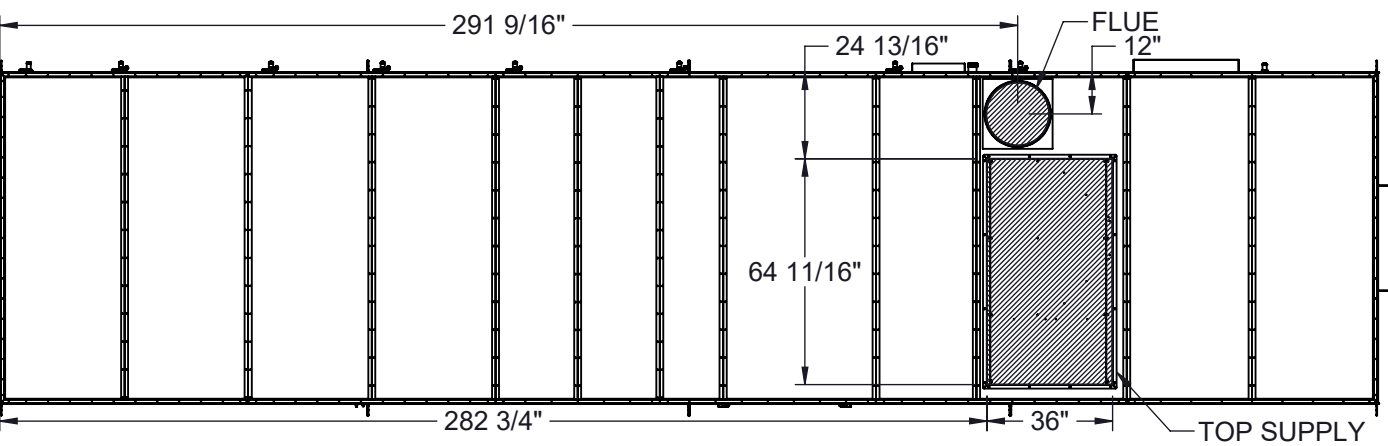
Desert Aire has a policy of continuous product and quality improvement. Specifications and dimensions are subject to change without notice. This drawing and information contained herein are the exclusive property of the Desert Aire Corporation. Any use detrimental to the interests of Desert Aire is prohibited.		All Dimensions in Inches All Angles 90° All outside corners 0.125" fillet Unless Otherwise Specified		Tolerance Unless Otherwise Specified X.X ±.125 X.XX ±.060 X.XXX ±.030 Angles ±1°		 N120 W18485 FREISTADT RD GERMANTOWN, WI 53022 Tel: (262) 946-7400 Fax: (262) 946-7401	
ALL DIMENSIONS ARE IN INCHES TOLERANCE ± 1/8"		 Third Angle Projection		Drawn	Date Released	Description	
				ASV	1/19/2018	SP 60-80 TON SPLIT SINGLE GAS	
Part weight				Sheet	3/10	Page Title	
				Scale	NTS	Drawing Number	
				Rev.	7	G1000-013	

HORIZONTAL SUPPLY OPTION  
LEFT HAND ACCESS OPTION ONLY  
REFER TO PAGE 5 FOR RIGHT HAND ACCESS  
(BACK VIEW)



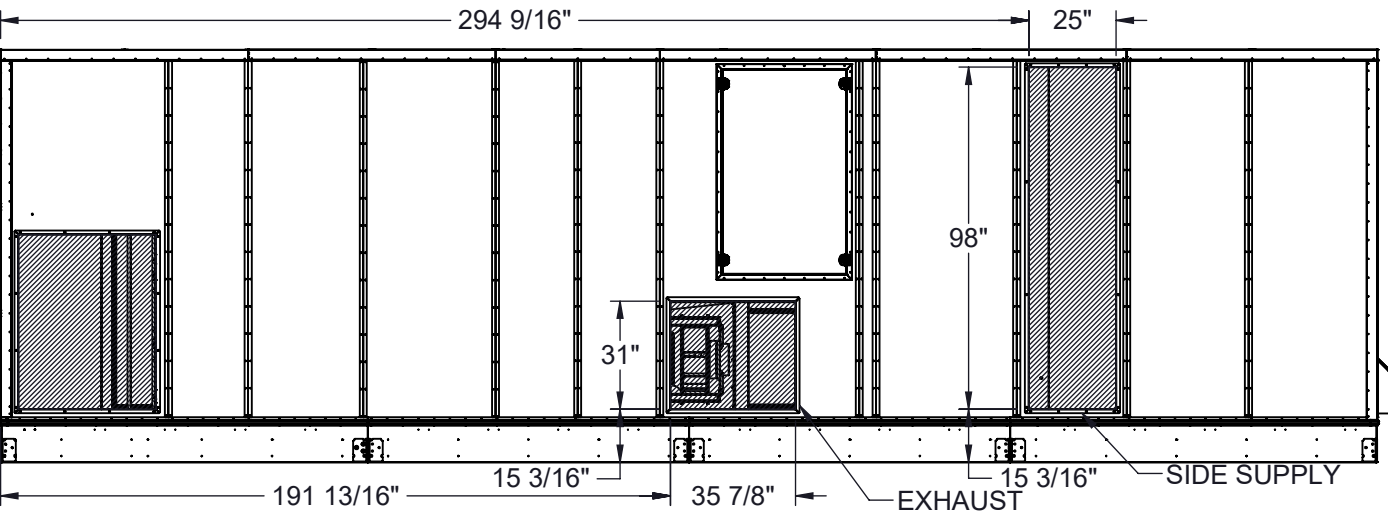
TOP SUPPLY OPTION  
LEFT HAND ACCESS OPTION ONLY  
REFER TO PAGE 5 FOR RIGHT HAND ACCESS  
(TOP VIEW)

INTAKE



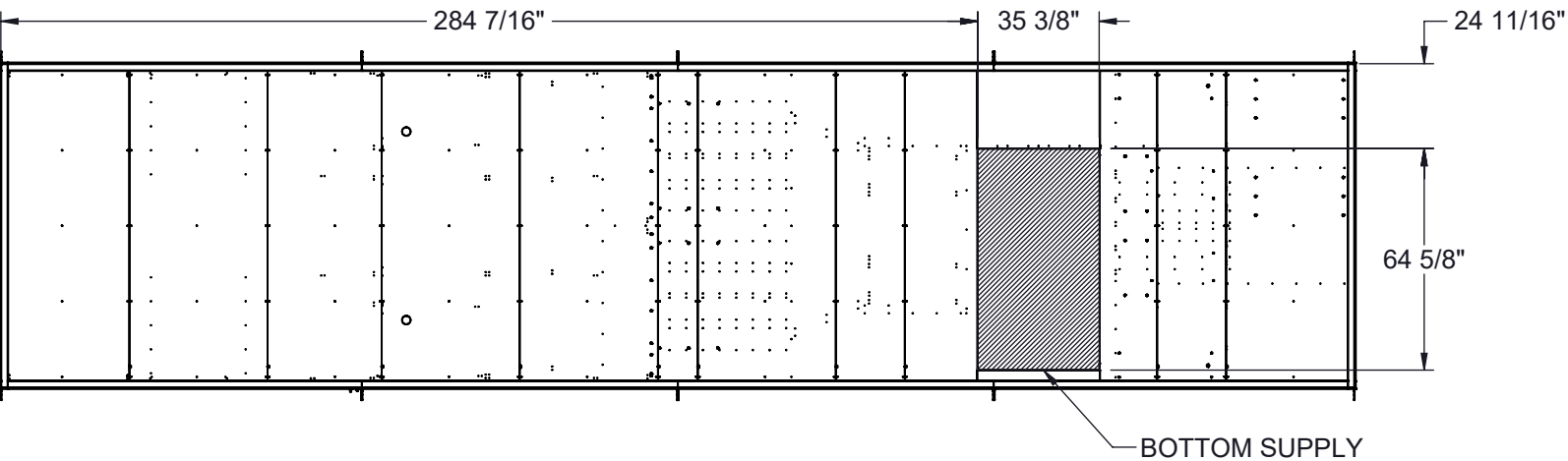
SIDE SUPPLY OPTION  
LEFT HAND ACCESS OPTION ONLY  
REFER TO PAGE 5 FOR RIGHT HAND ACCESS  
(SIDE VIEW)

INTAKE



BOTTOM SUPPLY OPTION  
LEFT HAND ACCESS OPTION ONLY  
REFER TO PAGE 5 FOR RIGHT HAND ACCESS  
(VIEW FROM ABOVE)

INTAKE



NOTES:  
REFER TO SHEET 1 FOR GENERAL NOTES  
LEFT HAND ACCESS SHOWN IN ALL VIEWS  
HOODS REMOVED FOR CLARITY  
EXHAUST AIR LOCATED IN THE SAME POSITION REGARDLESS OF OPTIONS  
FLUES LOCATED IN THE SAME POSITION REGARDLESS OF OPTIONS

Desert Aire has a policy of continuous product and quality improvement. Specifications and dimensions are subject to change without notice. This drawing and information contained herein are the exclusive property of the Desert Aire Corporation. Any use detrimental to the interests of Desert Aire is prohibited.

ALL DIMENSIONS ARE IN INCHES  
TOLERANCE  $\pm 1/8"$

All Dimensions in Inches  
All Angles 90°  
All outside corners 0.125" fillet  
Unless Otherwise Specified



Third Angle Projection

Part weight

Tolerance Unless  
Otherwise Specified  
X.X  $\pm .125$   
X.XX  $\pm .060$   
X.XXX  $\pm .030$   
Angles  $\pm 1^\circ$

Drawn  
ASV  
Date Released  
1/19/2018

Sheet  
4/10

Scale  
NTS



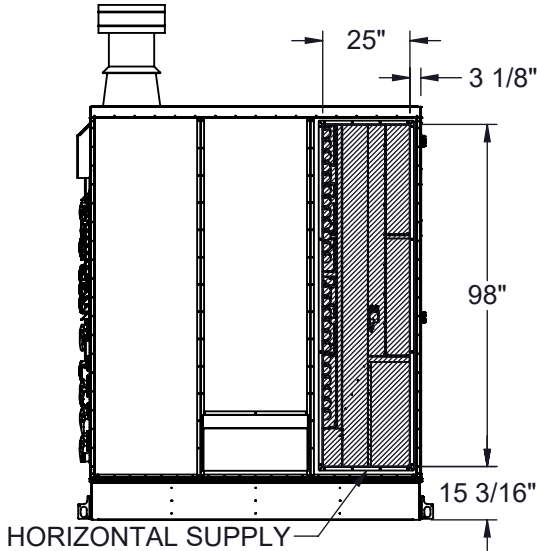
N120 W18485 FREISTADT RD  
GERMANTOWN, WI 53022  
Tel: (262) 946-7400  
Fax: (262) 946-7401

Description  
SP 60-80 TON SPLIT SINGLE GAS

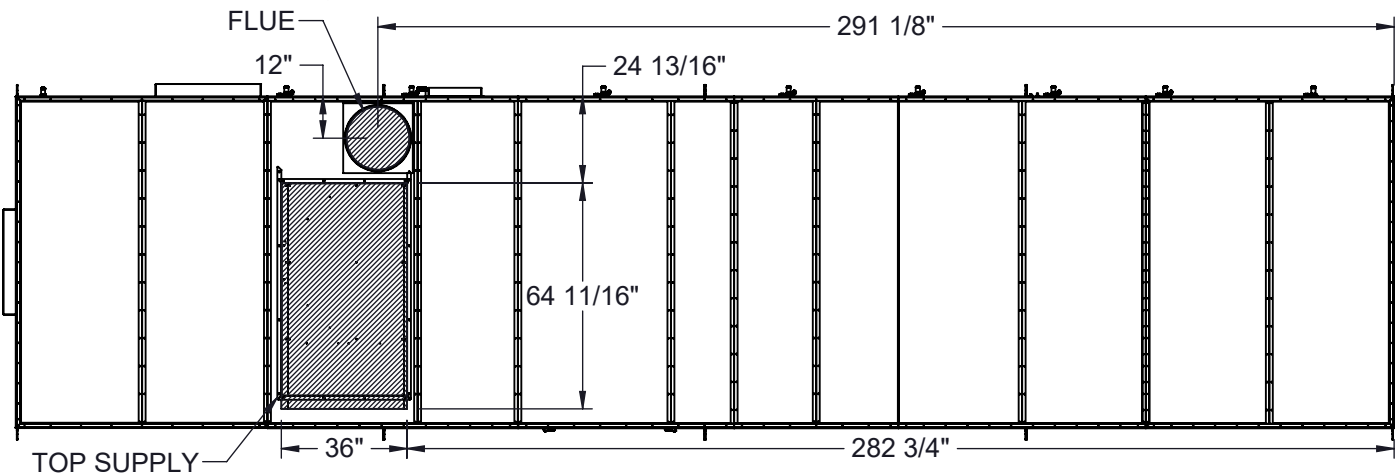
Page Title  
LH ACCESS DISCHARGE OPTIONS GA

Drawing Number  
G1000-013

HORIZONTAL SUPPLY OPTION  
RIGHT HAND ACCESS OPTION ONLY  
REFER TO PAGE 4 FOR LEFT HAND ACCESS  
(SIDE VIEW)

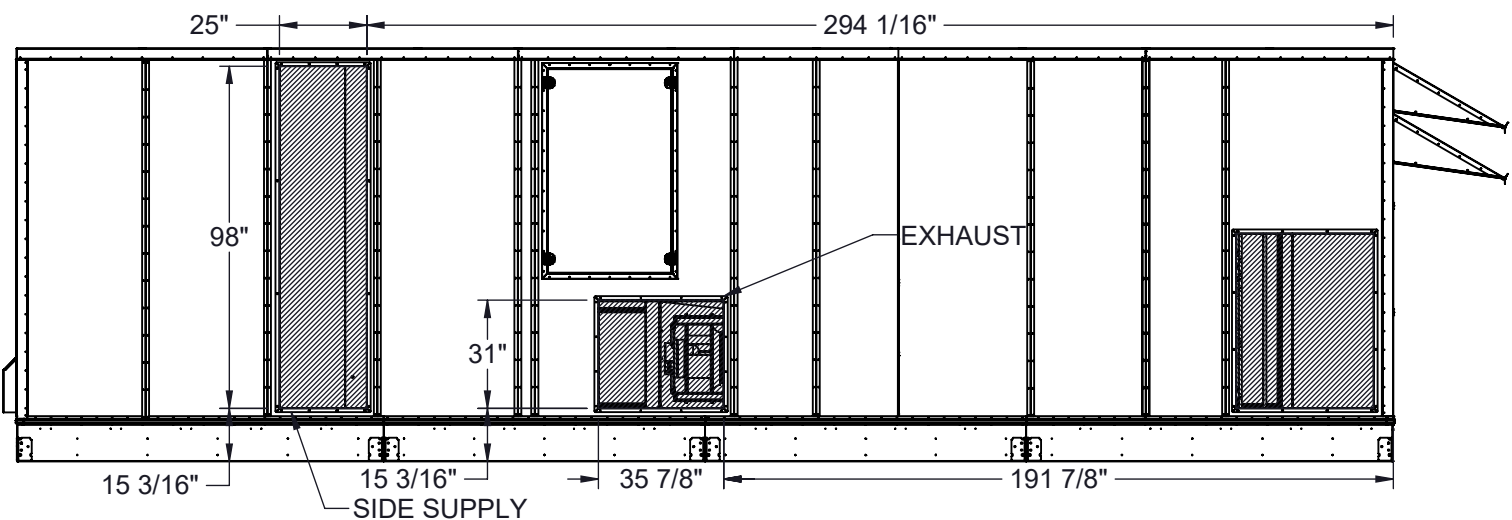


TOP SUPPLY OPTION  
RIGHT HAND ACCESS OPTION ONLY  
REFER TO PAGE 4 FOR LEFT HAND ACCESS  
(TOP VIEW)



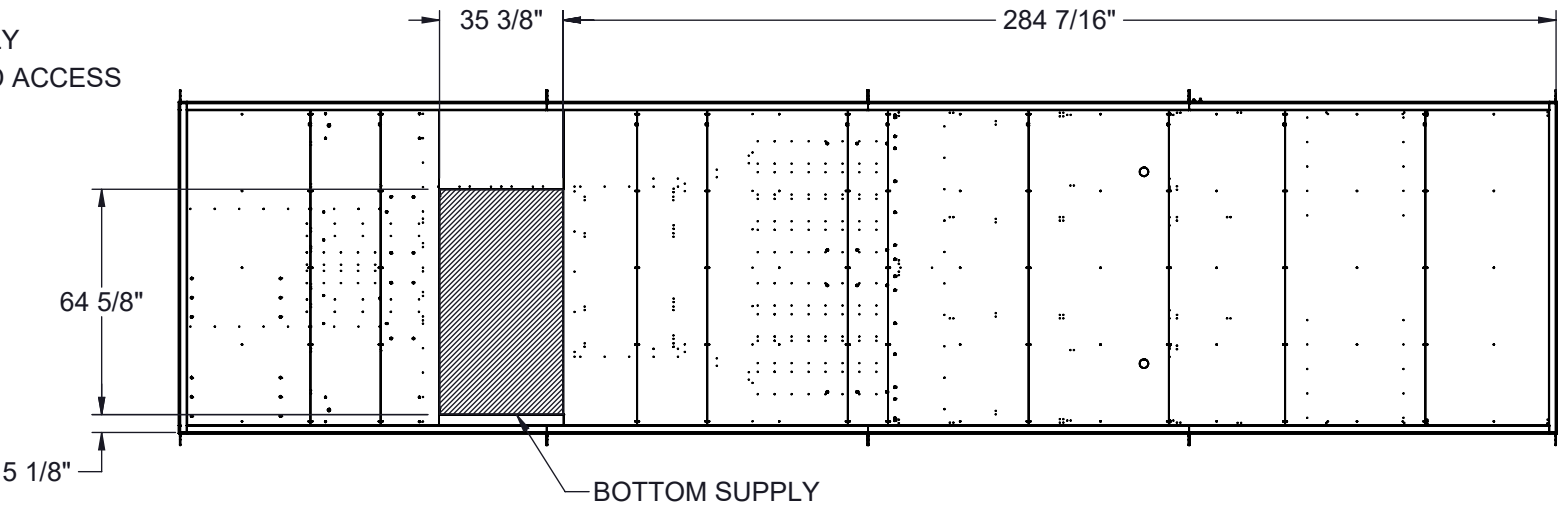
INTAKE

SIDE SUPPLY OPTION  
RIGHT HAND ACCESS OPTION ONLY  
REFER TO PAGE 4 FOR LEFT HAND ACCESS  
(SIDE VIEW)



INTAKE

BOTTOM SUPPLY OPTION  
RIGHT HAND ACCESS OPTION ONLY  
REFER TO PAGE 4 FOR LEFT HAND ACCESS  
(VIEW FROM ABOVE)



INTAKE

NOTES:  
REFER TO SHEET 1 FOR GENERAL NOTES  
RIGHT HAND ACCESS SHOWN IN ALL VIEWS  
HOODS REMOVED FOR CLARITY  
EXHAUST AIR LOCATED IN THE SAME POSITION REGARDLESS OF OPTIONS  
FLUES LOCATED IN THE SAME POSITION REGARDLESS OF OPTIONS

Desert Aire has a policy of continuous product and quality improvement. Specifications and dimensions are subject to change without notice. This drawing and information contained herein are the exclusive property of the Desert Aire Corporation. Any use detrimental to the interests of Desert Aire is prohibited.

ALL DIMENSIONS ARE IN INCHES  
TOLERANCE  $\pm 1/8"$

All Dimensions in Inches  
All Angles 90°  
All outside corners 0.125" fillet  
Unless Otherwise Specified



Third Angle Projection

Part weight

Tolerance Unless  
Otherwise Specified  
X.X  $\pm .125$   
X.XX  $\pm .060$   
X.XXX  $\pm .030$   
Angles  $\pm 1^\circ$

Drawn  
ASV  
Date Released  
1/19/2018

Sheet  
5/10

Scale  
NTS



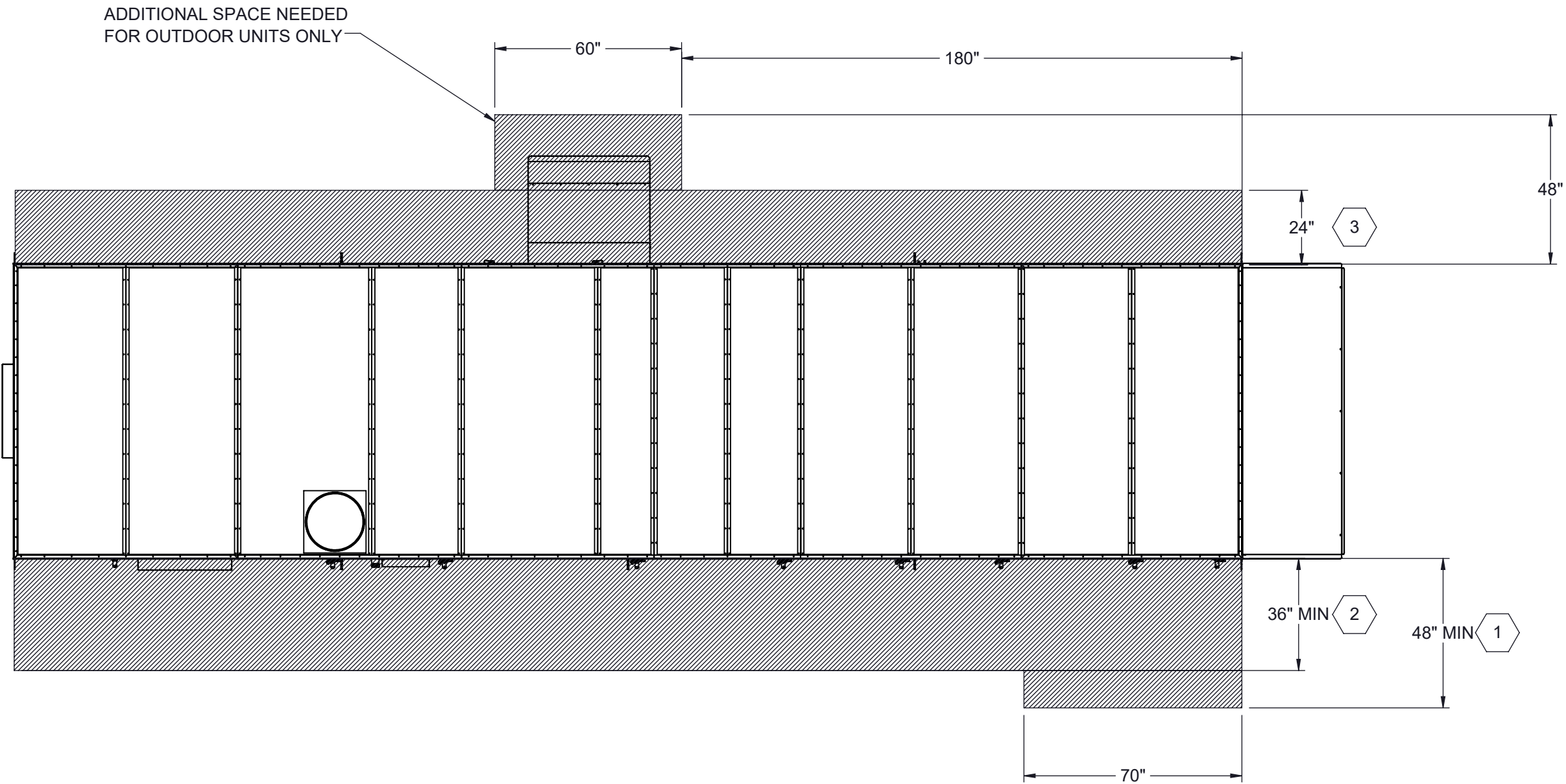
N120 W18485 FREISTADT RD  
GERMANTOWN, WI 53022  
Tel: (262) 946-7400  
Fax: (262) 946-7401

Description  
SP 60-80 TON SPLIT SINGLE GAS

Page Title  
RH ACCESS DISCHARGE OPTIONS GA

Drawing Number  
G1000-013







1 96" RECOMMENDED FOR FILTER ACCESS.

2 120" CLEARANCE ON ACCESS SIDE RECOMMENDED FOR FAN AND COIL SERVICE

3 REQUIRED FOR ASSEMBLY OF SECTIONED UNITS ONLY

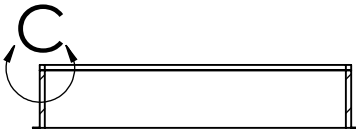
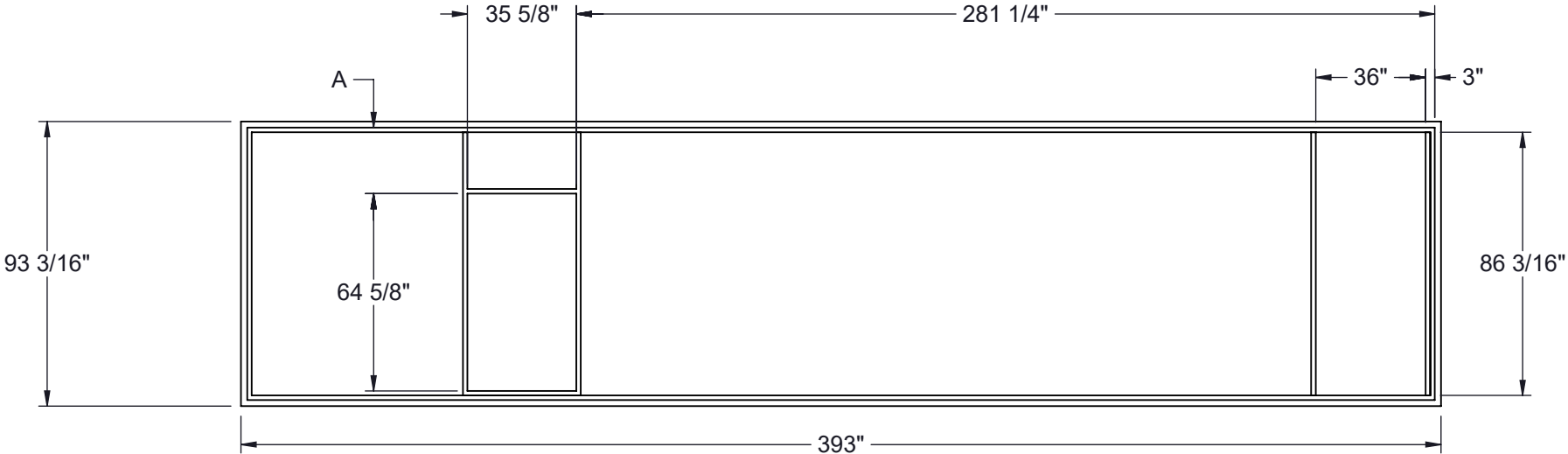
NOTES:  
REFER TO SHEET 1 FOR GENERAL NOTES  
LEFT HAND ACCESS SHOWN IN ALL VIEWS  
RIGHT HAND ACCESS OPTIONS LOCATED WITH SAME DIMENSIONS ON OPPOSITE SIDE UNLESS OTHERWISE SPECIFIED

Desert Aire has a policy of continuous product and quality improvement. Specifications and dimensions are subject to change without notice. This drawing and information contained herein are the exclusive property of the Desert Aire Corporation. Any use detrimental to the interests of Desert Aire is prohibited.	All Dimensions in Inches All Angles 90° All outside corners 0.125" fillet Unless Otherwise Specified		Tolerance Unless Otherwise Specified X.X ±.125 X.XX ±.060 X.XXX ±.030 Angles ±1°		 <div>N120 W18485 FREISTADT RD GERMANTOWN, WI 53022 Tel: (262) 946-7400 Fax: (262) 946-7401</div>	
	 Third Angle Projection		Drawn	Date Released		Description
			ASV	1/19/2018		SP 60-80 TON SPLIT SINGLE GAS
ALL DIMENSIONS ARE IN INCHES TOLERANCE ± 1/8"	Part weight		Sheet	6/10	Page Title UNIT CLEARANCE GA	
			Scale	NTS	Rev. 7	Drawing Number G1000-013

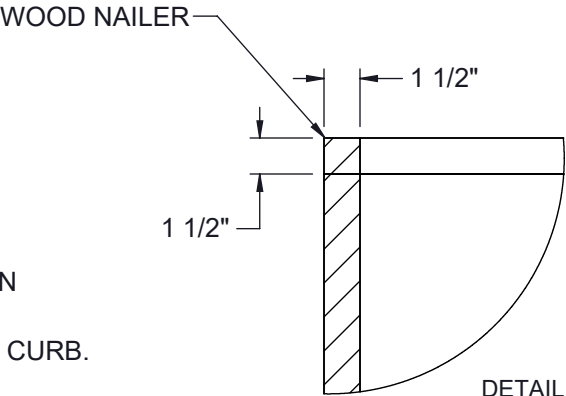
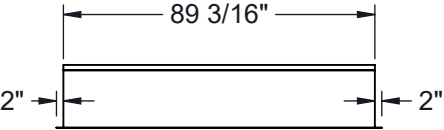
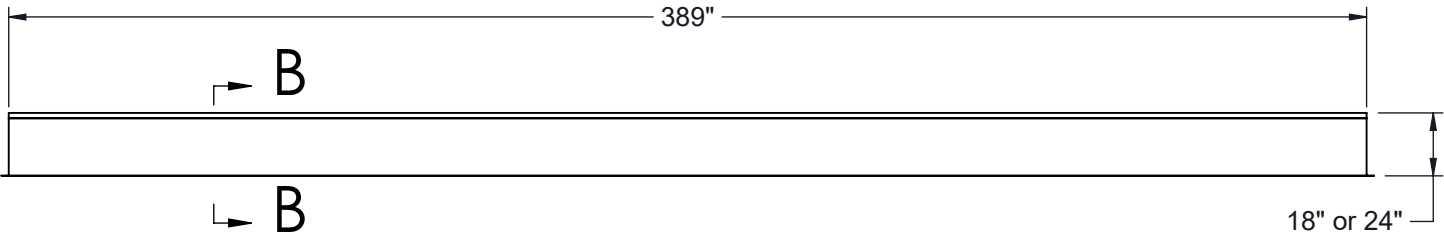
NOTES:  
REFER TO SHEET 1 FOR GENERAL NOTES

- 1. 14 GA GALVANIZED STEEL CONSTRUCTION
- 2. PRIME PAINTED AFTER FABRICATION
- 3. PRESSURE TREATED WOOD NAILERS
- 4. 1-1/2" THICK 3LB/FT^3 FIBERGLASS PERIMETER INSULATION
- 5. INTERNAL ANGLE REINFORCEMENT
- 6. CURB TO BE SHIPPED KNOCKED DOWN
- 7. NUMBER OF EQUIPMENT SUPPORTS MAY VARY

UNIT TON	ACCESS	18" CURB	24" CURB	A
60-80	RIGHT HAND	CB-80NGR2-18	CB-80NGR2-24	3"
60-80	LEFT HAND	CB-80NGL2-18	CB-80NG62-24	22 9/16"



SECTION B-B



DETAIL C  
SCALE 1 : 8

NUMBER AND LOCATION OF CROSS SUPPORTS IS DEPENDANT UPON THE GUAGE OF MATERIAL USED TO CONSTRUCT THE CURB, DUCT SUPPORT CONFIGURATION LENGTH OF CURB, AND WIDTH OF CURB. INSTALLATION INSTRUCTIONS INCLUDED WITH CURB SHIPMENT INDICATE THE REQUIRED POSITION FOR FIELD ASSEMBLED CURBS.

Desert Aire has a policy of continuous product and quality improvement. Specifications and dimensions are subject to change without notice. This drawing and information contained herein are the exclusive property of the Desert Aire Corporation. Any use detrimental to the interests of Desert Aire is prohibited.

ALL DIMENSIONS ARE IN INCHES  
TOLERANCE ± 1/8"

All Dimensions in Inches  
All Angles 90°  
All outside corners 0.125" fillet  
Unless Otherwise Specified

Third Angle Projection

Part weight

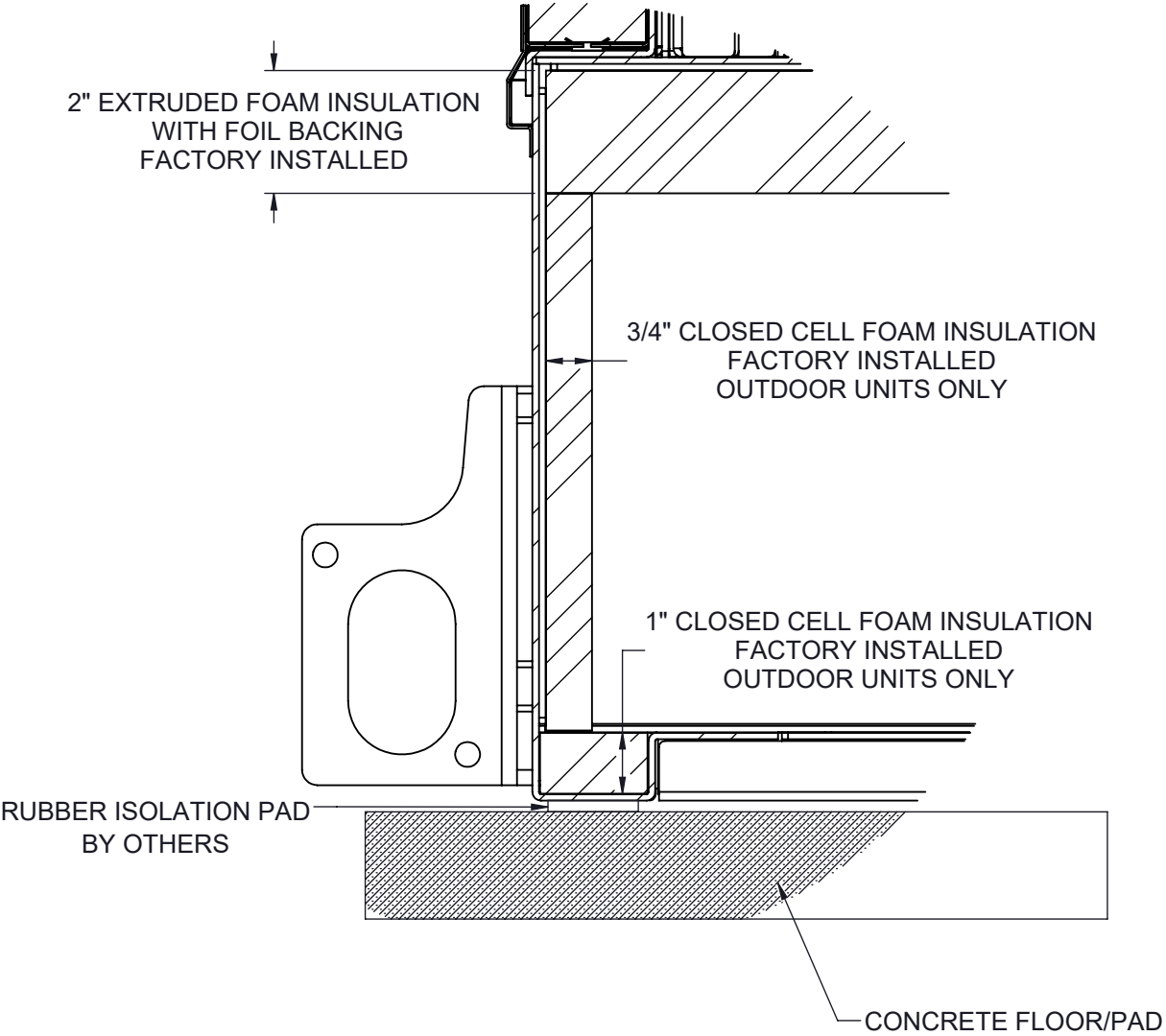
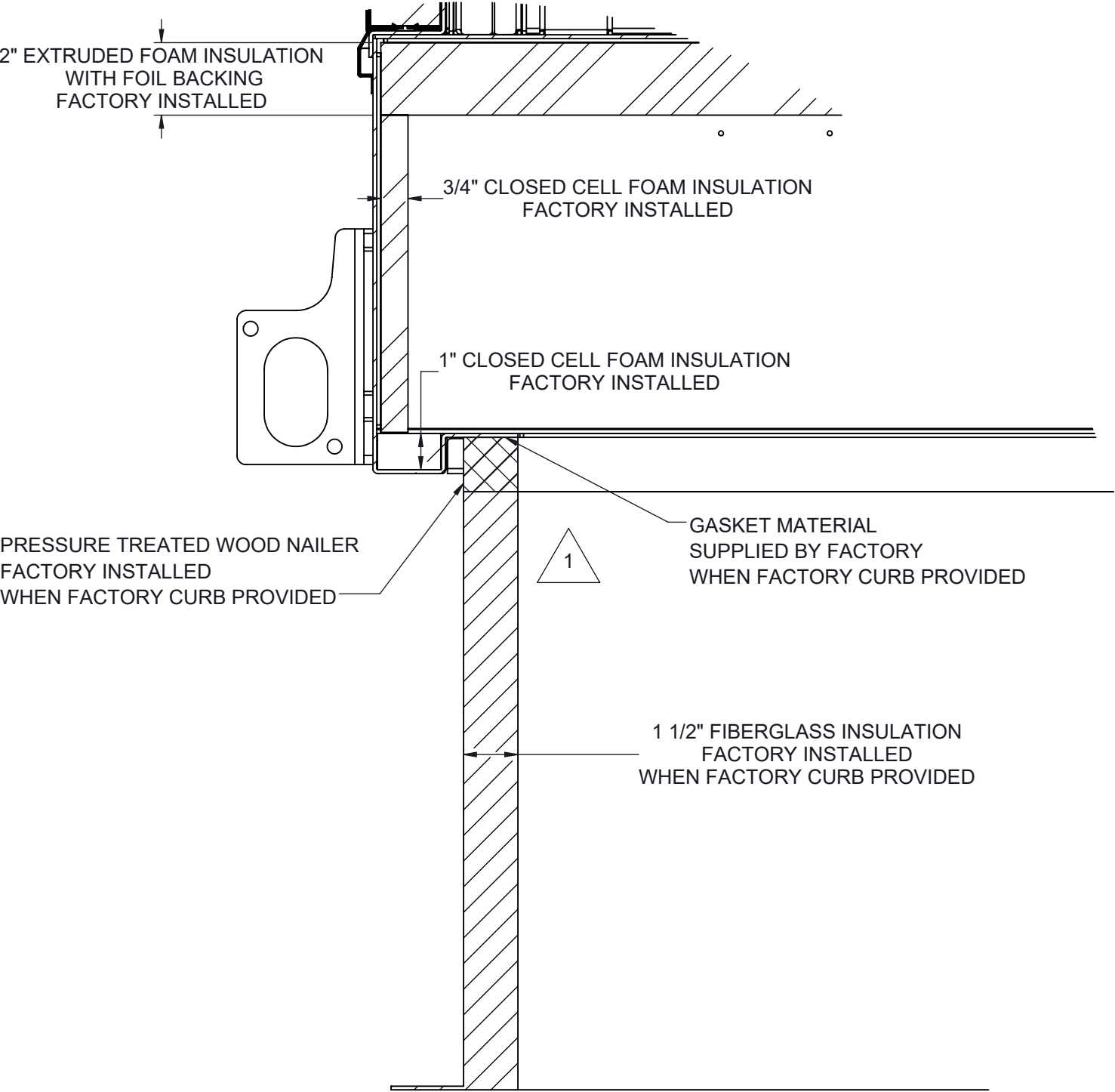
Tolerance Unless Otherwise Specified	
X.X	±.125
X.XX	±.060
X.XXX	±.030
Angles	±1°

N120 W18485 FREISTADT RD  
GERMANTOWN, WI 53022  
Tel: (262) 946-7400  
Fax: (262) 946-7401


Drawn	ASV	Date Released	1/19/2018	Description	SP 60-80 TON SPLIT SINGLE GAS	
Sheet	7/10			Page Title	CURB DETAIL GA	
Scale	NTS		Rev.	7	Drawing Number	G1000-013

CURB MOUNT

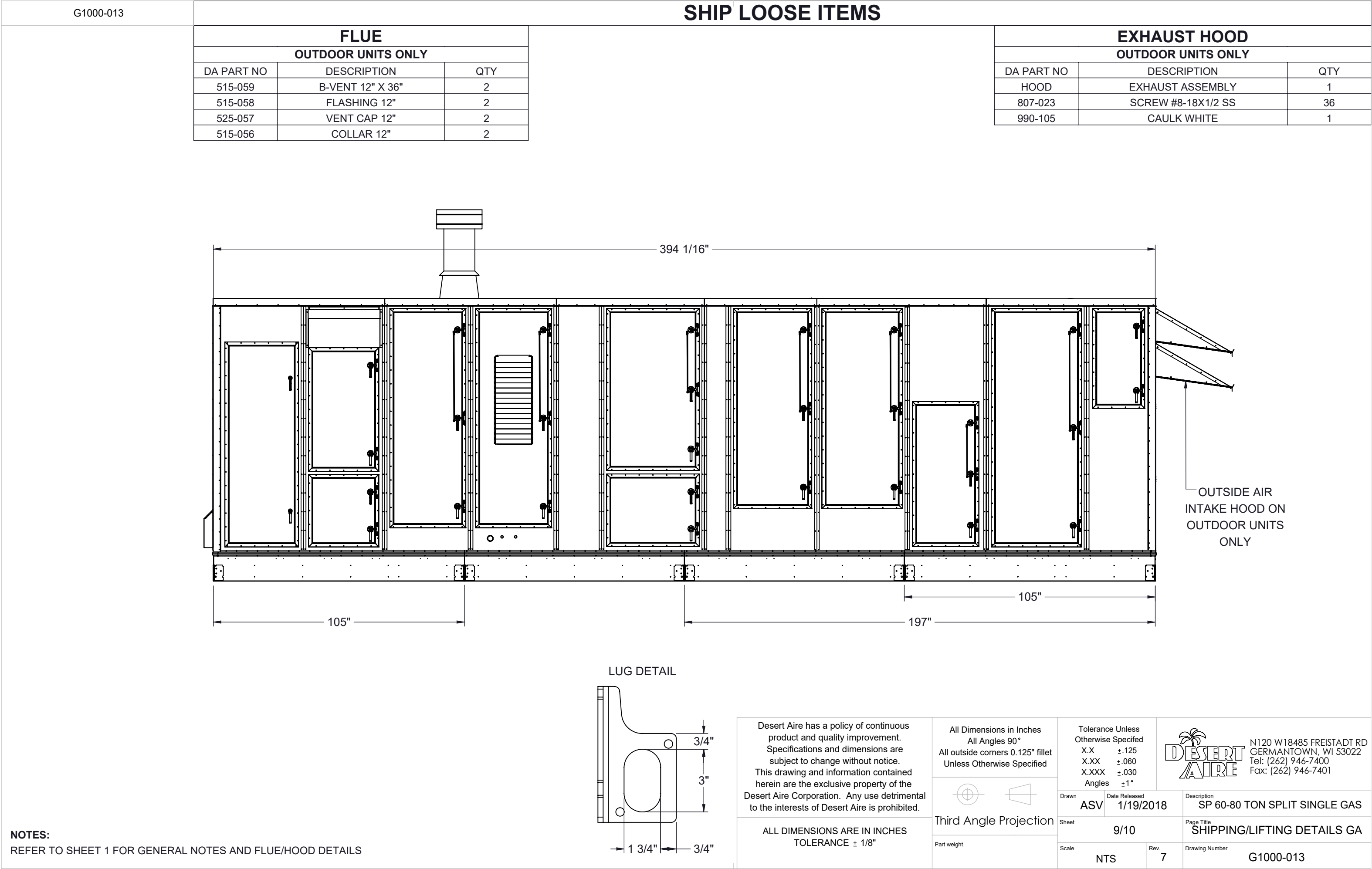
PAD MOUNT



NOTES:  
REFER TO SHEET 1 FOR GENERAL NOTES  
SEE SHEET 7 NOTES FOR CURB SPECIFICATIONS

Desert Aire has a policy of continuous product and quality improvement. Specifications and dimensions are subject to change without notice. This drawing and information contained herein are the exclusive property of the Desert Aire Corporation. Any use detrimental to the interests of Desert Aire is prohibited.		All Dimensions in Inches All Angles 90° All outside corners 0.125" fillet Unless Otherwise Specified		Tolerance Unless Otherwise Specified X.X ±.125 X.XX ±.060 X.XXX ±.030 Angles ±1°		 N120 W18485 FREISTADT RD GERMANTOWN, WI 53022 Tel: (262) 946-7400 Fax: (262) 946-7401	
Third Angle Projection		Drawn ASV		Date Released 1/19/2018		Description SP 60-80 TON SPLIT SINGLE GAS	
ALL DIMENSIONS ARE IN INCHES TOLERANCE ± 1/8"		Sheet 8/10		Page Title MOUNTING DETAILS GA		Drawing Number G1000-013	
Part weight		Scale NTS		Rev. 7			





G1000-013

## SHIP LOOSE ITEMS

## FLUE

### OUTDOOR UNITS ONLY

DA PART NO	DESCRIPTION	QTY
515-059	B-VENT 12" X 36"	1
515-058	FLASHING 12"	1
525-057	VENT CAP 12"	1
515-056	COLLAR 12"	1

## EXHAUST HOOD

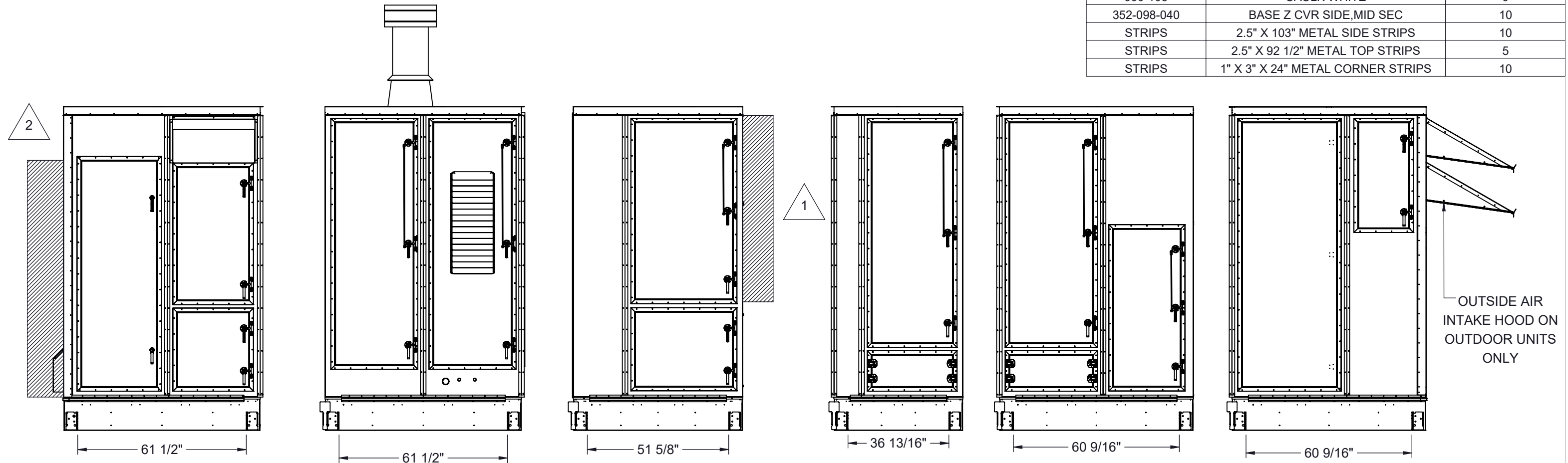
### OUTDOOR UNITS ONLY

DA PART NO	DESCRIPTION	QTY
HOOD	EXHAUST ASSEMBLY	1
807-023	SCREW #8-18X1/2 SS	36
990-105	CAULK WHITE	1

## SECTION ITEMS

DA PART NO	DESCRIPTION	QTY
807-023	SCREW #8-18X1/2 SS	860
807-007	BOLT 3/8-16X1 SS	20
807-008	WASHER 3/8 FLAT SS	20
807-009	WASHER LOCK SPLIT 3/8 SS	20
807-010	NUT 3/8-16 SS	20
807-223	SCREW #10-32x1/2 MACHINE HEX	20
950-089	TAPER SEAM SEALER 2"	150 FT (3 ROLLS)
950-090	TAPE SEAM SEALER 4"	17 FT
990-105	CAULK WHITE	9
352-098-040	BASE Z CVR SIDE,MID SEC	10
STRIPS	2.5" X 103" METAL SIDE STRIPS	10
STRIPS	2.5" X 92 1/2" METAL TOP STRIPS	5
STRIPS	1" X 3" X 24" METAL CORNER STRIPS	10

## SHIPPING AND LIFTING DETAILS FOR MULTI-SECTION CONSTRUCTION OPTION ONLY



1.

BACKDRAFT DAMPER OPTION ADDS AN ADDITIONAL 9" TO FAN SECTION LENGTH

/ :

REMOTE CONDENSER/WATER CONNECTIONS WILL ADD AN ADDITION MAXIMUM OF 8"

Desert Aire has a policy of continuous product and quality improvement. Specifications and dimensions are subject to change without notice. This drawing and information contained herein are the exclusive property of the Desert Aire Corporation. Any use detrimental to the interests of Desert Aire is prohibited.

ALL DIMENSIONS ARE IN INCHES  
TOLERANCE  $\pm 1/8"$

All Dimensions in Inches  
All Angles 90°  
All outside corners 0.125" fillet  
Unless Otherwise Specified



### Third Angle Projection

Part weight

Tolerance Unless Otherwise Specified	
X.X	$\pm .125$
X.XX	$\pm .060$
X.XXX	$\pm .030$
Angles	$\pm 1^{\circ}$

Drawn	Date Released
ASV	1/19/2018

Sheet 10/10

Scale

NTS

NTS	Rev. 7
-----	-----------



N120 W18485 FREISTADT RD  
GERMANTOWN, WI 53022  
Tel: (262) 946-7400  
Fax: (262) 946-7401

Description	SP 60-80 TON SPLIT SINGLE GAS
-------------	-------------------------------

Page Title  
SECTIONED LIFTING DETAILS GA

Drawing Number	G1000-013
----------------	-----------

**NOTES:**

REFER TO SHEET 1 FOR GENERAL NOTES AND FLUE/HOOD DETAILS  
UNIT SHIPPED IN SIX SECTIONS SEE I/O MANUAL FOR ASSEMBLY DETAILS