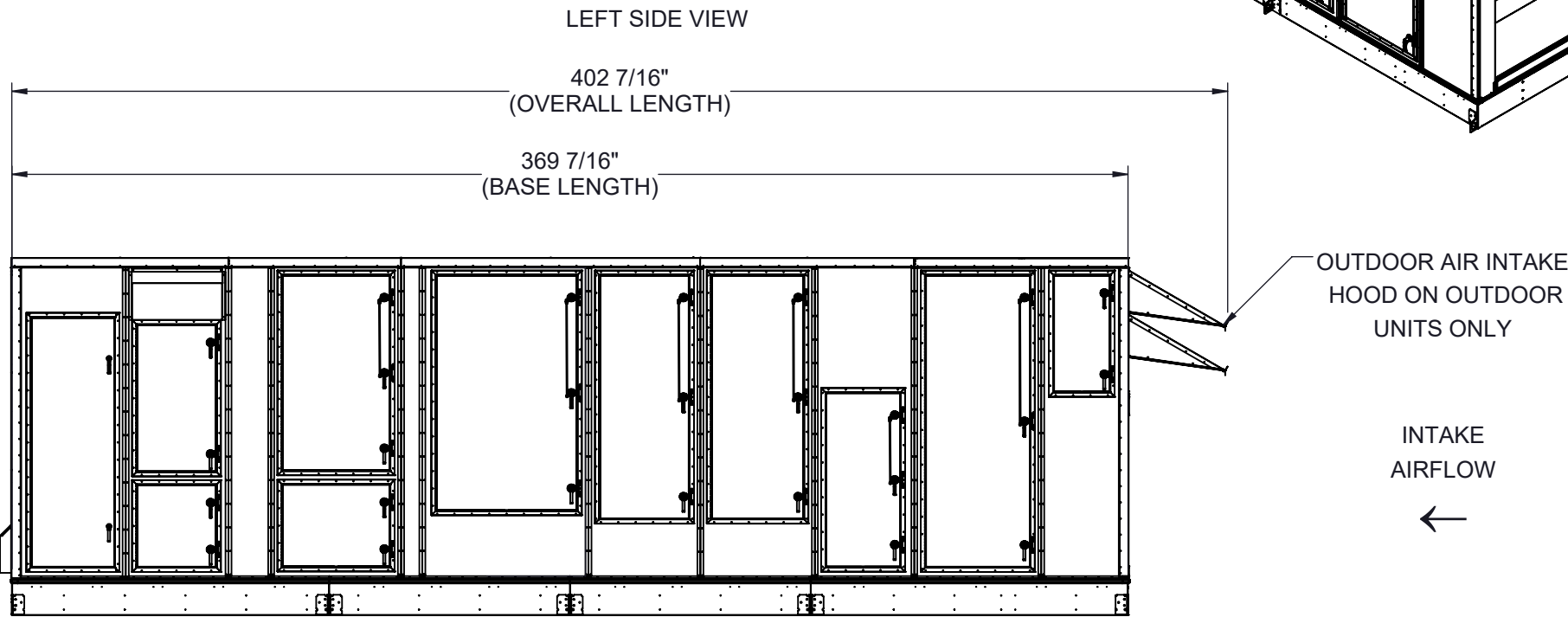
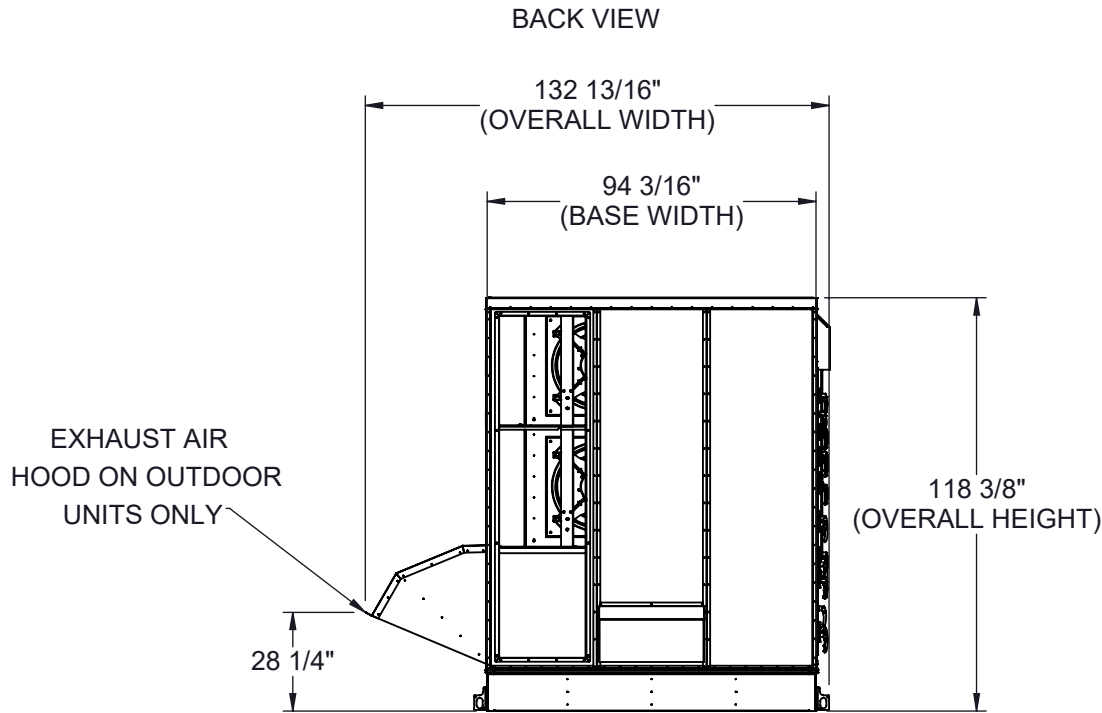
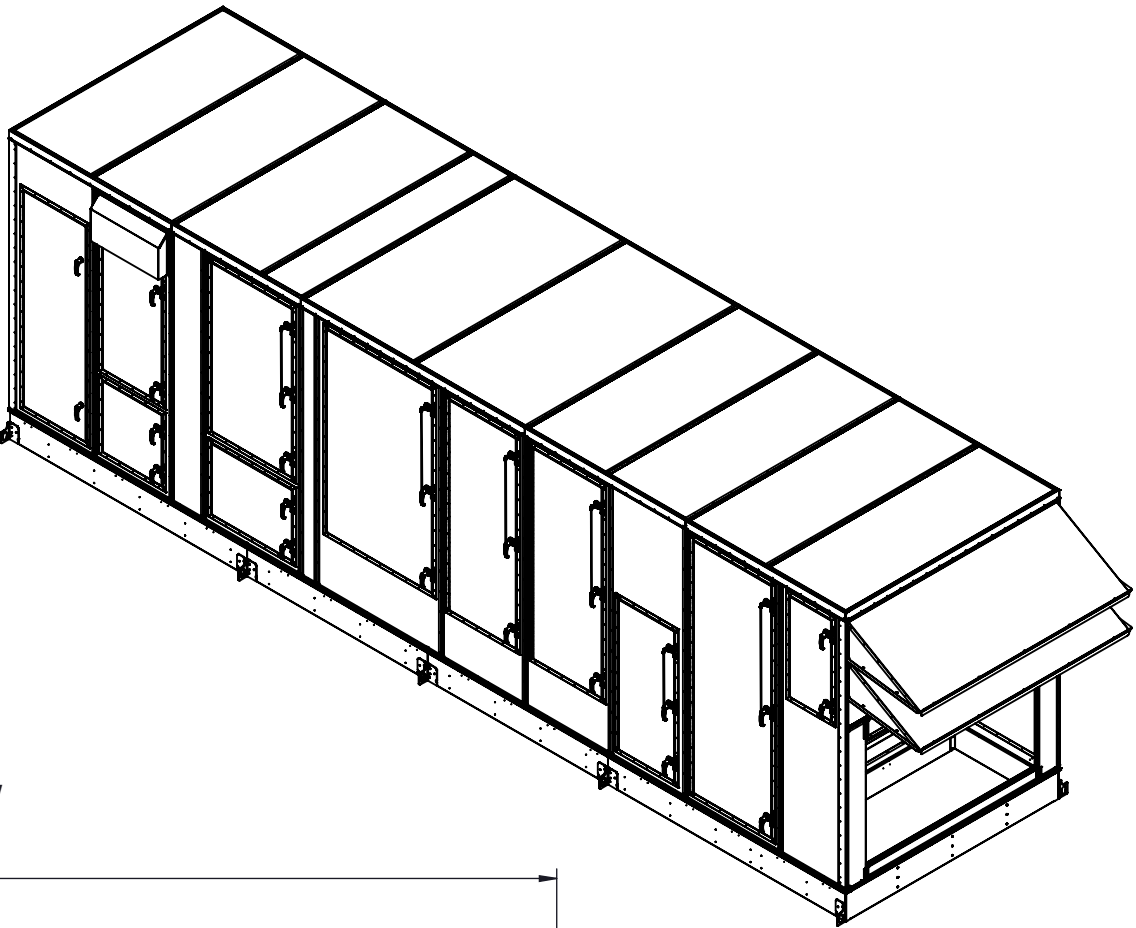


GENERAL NOTES FOR APPLICABLE SHEETS:

LEFT HAND ACCESS SHOWN IN ALL VIEWS  
RIGHT HAND ACCESS OPTIONS LOCATED WITH SAME DIMENSIONS ON OPPOSITE SIDE UNLESS OTHERWISE SPECIFIED  
WEIGHTS SHOWN REFLECT FULLY OPTIONED ESTIMATED UNIT WEIGHT



UNIT SIZE	ESTIMATED WEIGHT (lbs.)
60 - 80 TONS	18500

Desert Aire has a policy of continuous product and quality improvement. Specifications and dimensions are subject to change without notice. This drawing and information contained herein are the exclusive property of the Desert Aire Corporation. Any use detrimental to the interests of Desert Aire is prohibited.

ALL DIMENSIONS ARE IN INCHES  
TOLERANCE  $\pm 1/8"$

All Dimensions in Inches  
All Angles 90°  
All outside corners 0.125" fillet  
Unless Otherwise Specified



Third Angle Projection

Part weight

Tolerance Unless  
Otherwise Specified  
X.X  $\pm .125$   
X.XX  $\pm .060$   
X.XXX  $\pm .030$   
Angles  $\pm 1^\circ$

Drawn  
ASV  
Date Released  
1/19/2018

Sheet  
1/9

Scale  
NTS



N120 W18485 FREISTADT RD  
GERMANTOWN, WI 53022  
Tel: (262) 946-7400  
Fax: (262) 946-7401

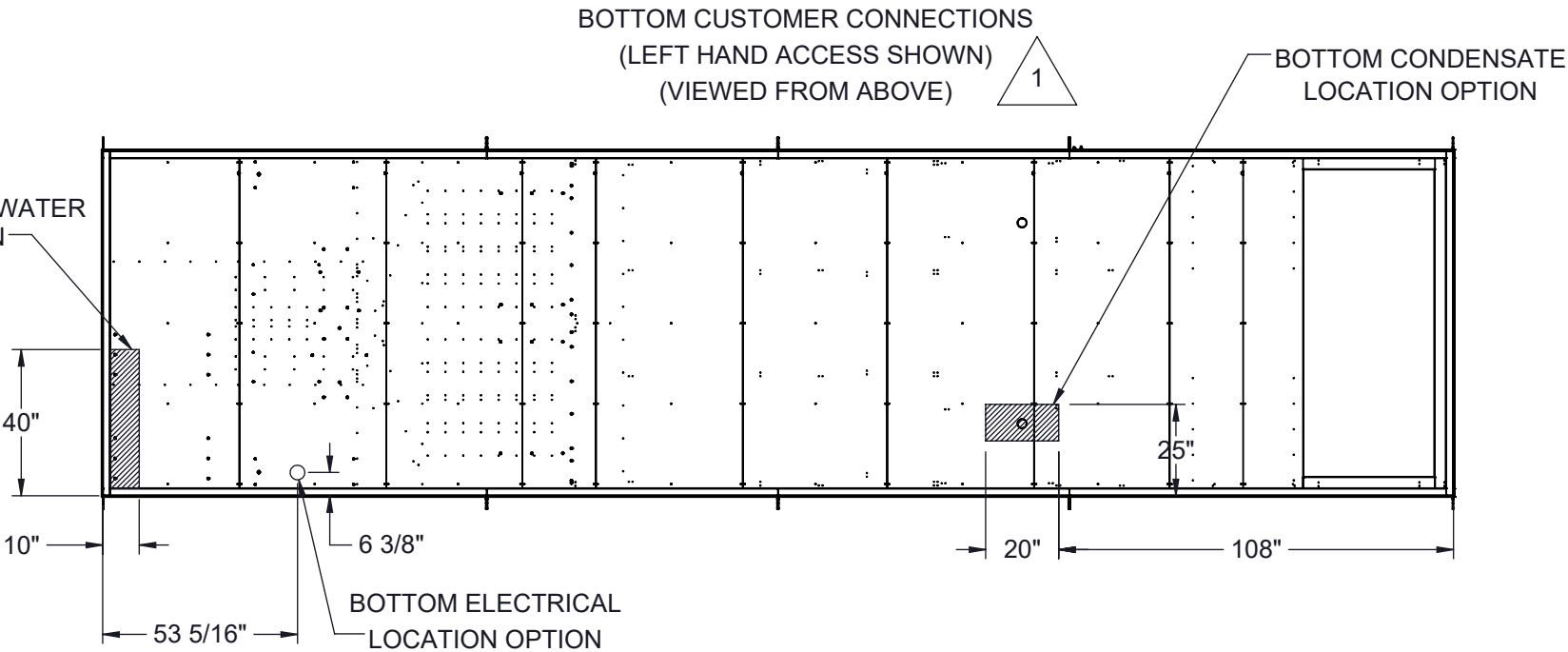
Description  
SP 60-80 TON SPLIT ELECT HEAT

Page Title  
GENERAL ARRANGEMENT

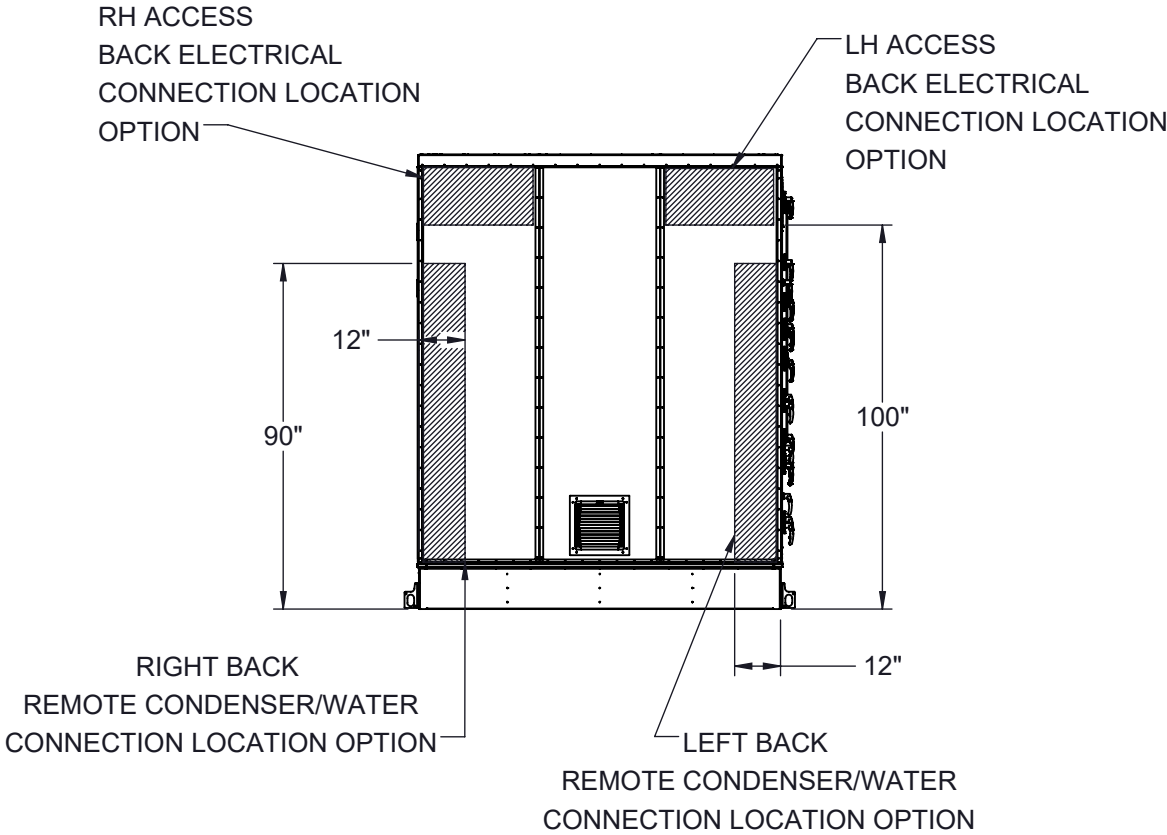
Drawing Number  
G1000-010

CUSTOMER CONNECTION LINE SIZE (in.)		
UNIT SIZE	60 TONS	70-80 TONS
CONDENSATE (PVC)	1 1/2	1 1/2
DISCHARGE LINE CIRCUIT A (CU)	1 1/8	1 5/8
LIQUID LINE CIRCUIT A (CU)	7/8	1 1/8
DISCHARGE LINE CIRCUIT B (CU)	1 5/8	1 5/8
LIQUID LINE CIRCUIT B (CU)	1 1/8	1 1/8
POOL WATER LINE CIRCUIT A (CPVC)	2	3
POOL WATER LINE CIRCUIT B (CPVC)	3	3
COOLING LOOP LINE (CU)	3	3

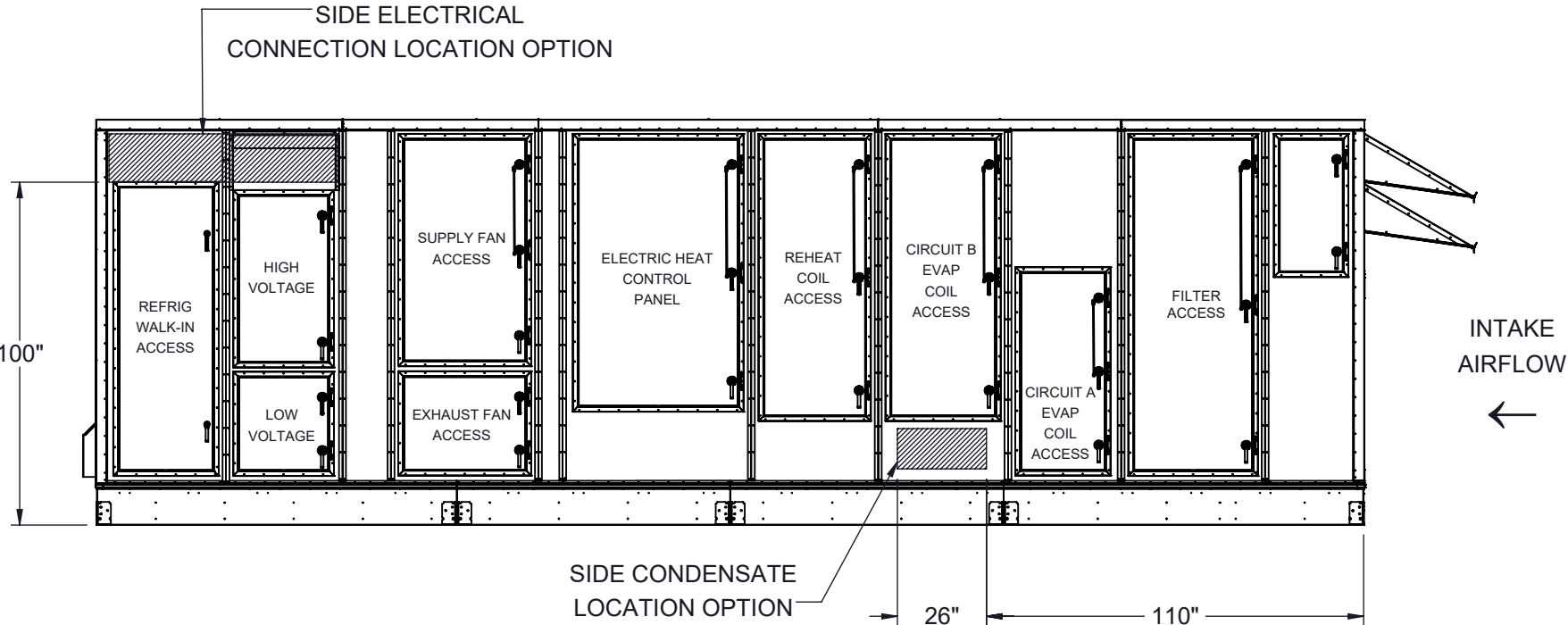
BOTTOM REMOTE CONDENSER/WATER  
CONNECTION LOCATION OPTION



BACK CONNECTIONS VIEW  
(NO ORIENTATION CHANGE FOR RH OR LH ACCESS)



LEFT SIDE CONNECTION VIEW  
(LEFT HAND ACCESS SHOWN)



NOTES:  
REFER TO SHEET 1 FOR GENERAL NOTES  
LEFT HAND ACCESS SHOWN IN ALL VIEWS  
RIGHT HAND ACCESS OPTIONS LOCATED WITH SAME DIMENSIONS ON OPPOSITE SIDE UNLESS OTHERWISE SPECIFIED



FILTER INFORMATION						
UNIT SIZE	OA QTY	OA SIZE	REPLACEMENT PART NUMBER	RA QTY	RA SIZE	REPLACEMENT PART NUMBER
60-80 TONS	15	18 X 24 X 4	870-056	15	18 X 24 X 4	870-056

Desert Aire has a policy of continuous product and quality improvement. Specifications and dimensions are subject to change without notice. This drawing and information contained herein are the exclusive property of the Desert Aire Corporation. Any use detrimental to the interests of Desert Aire is prohibited.

ALL DIMENSIONS ARE IN INCHES  
TOLERANCE  $\pm 1/8"$

All Dimensions in Inches  
All Angles 90°  
All outside corners 0.125" fillet  
Unless Otherwise Specified

Third Angle Projection

Part weight

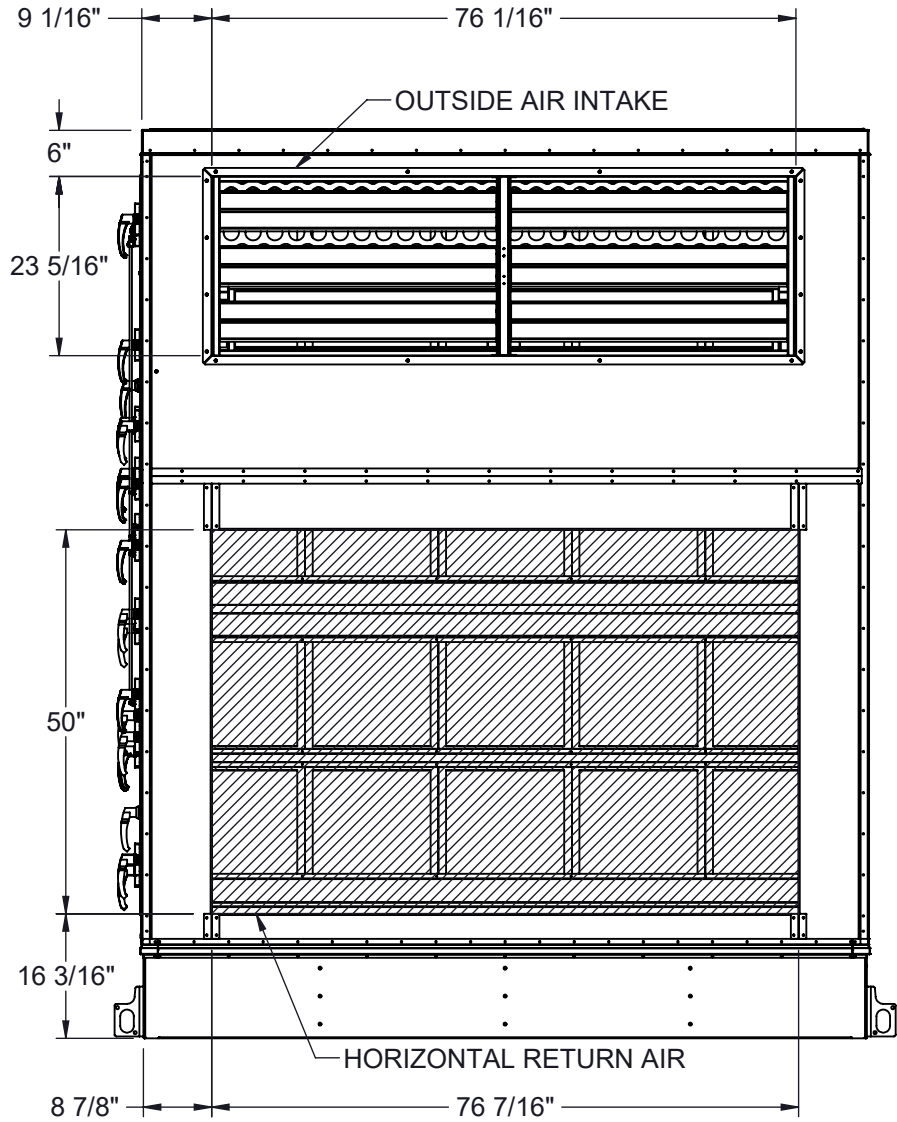
Tolerance Unless Otherwise Specified  
X.X  $\pm .125$   
X.XX  $\pm .060$   
X.XXX  $\pm .030$   
Angles  $\pm 1^\circ$

Drawn	Date Released	Description
ASV	1/19/2018	SP 60-80 TON SPLIT ELECT HEAT
Sheet	2/9	Page Title
Scale	NTS	Drawing Number
	Rev. 8	G1000-010

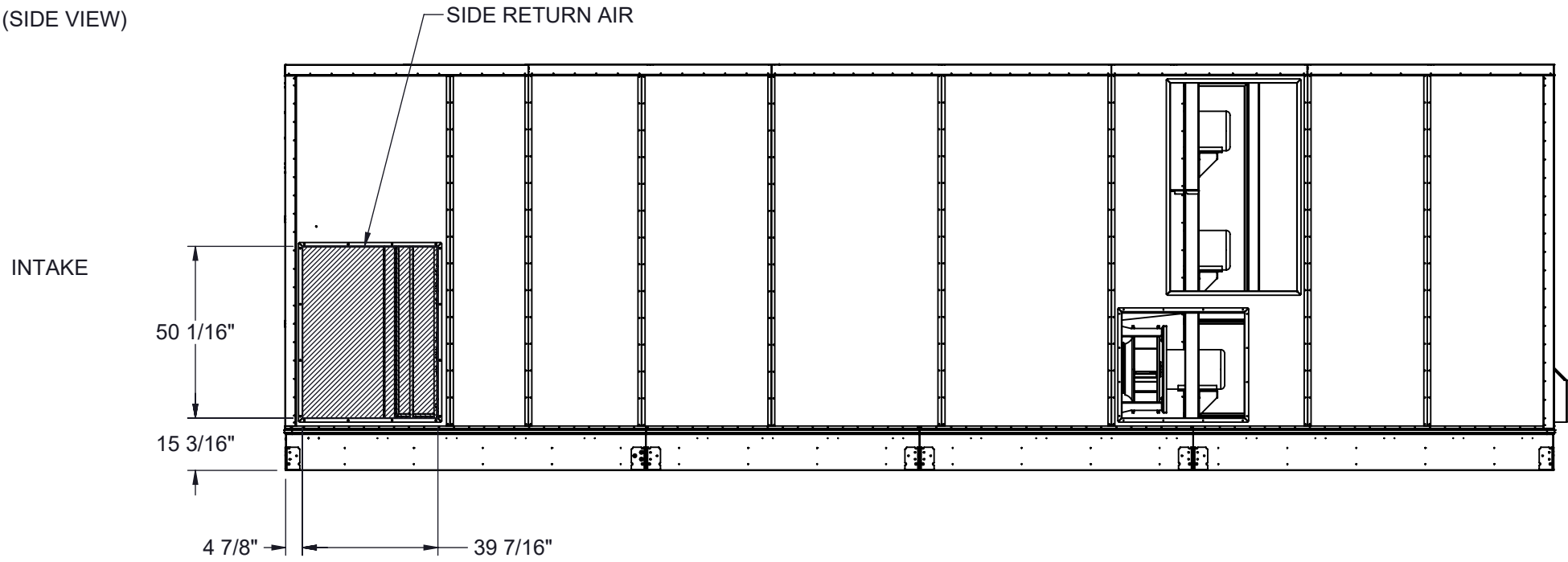
N120 W18485 FREISTADT RD  
GERMANTOWN, WI 53022  
Tel: (262) 946-7400  
Fax: (262) 946-7401

G1000-010

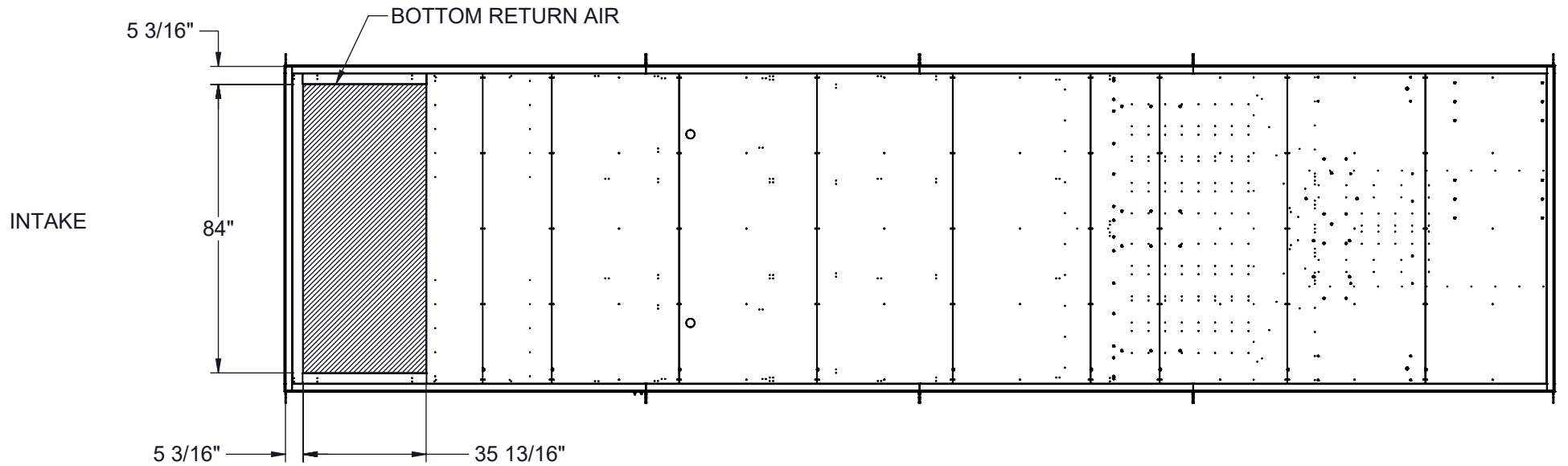
HORIZONTAL RETURN AIR OPTION  
(INTAKE VIEW)



SIDE RETURN AIR OPTION  
(SIDE VIEW)



BOTTOM RETURN AIR OPTION  
(VIEW FROM ABOVE)



NOTES:  
REFER TO SHEET 1 FOR GENERAL NOTES  
HOODS REMOVED FOR CLARITY  
ACCESS SIDE RETURN AIR OPTION WILL SHIFT FILTER SECTION DOORS TO NON-ACCESS SIDE  
OUTSIDE AIR INTAKE LOCATED IN THE SAME POSITION REGARDLESS OF OPTIONS

Desert Aire has a policy of continuous product and quality improvement. Specifications and dimensions are subject to change without notice. This drawing and information contained herein are the exclusive property of the Desert Aire Corporation. Any use detrimental to the interests of Desert Aire is prohibited.

ALL DIMENSIONS ARE IN INCHES  
TOLERANCE  $\pm 1/8"$

All Dimensions in Inches  
All Angles 90°  
All outside corners 0.125" fillet  
Unless Otherwise Specified



Third Angle Projection

Part weight

Tolerance Unless  
Otherwise Specified  
X.X  $\pm .125$   
X.XX  $\pm .060$   
X.XXX  $\pm .030$   
Angles  $\pm 1^\circ$

Drawn  
ASV  
Date Released  
1/19/2018

Sheet  
3/9

Scale  
NTS



N120 W18485 FREISTADT RD  
GERMANTOWN, WI 53022  
Tel: (262) 946-7400  
Fax: (262) 946-7401

Description  
SP 60-80 TON SPLIT ELECT HEAT

Page Title  
INTAKE OPTIONS GA

Drawing Number  
G1000-010

HORIZONTAL SUPPLY OPTION  
(NO ORIENTATION CHANGE FOR RH OR LH ACCESS)  
(DISCHARGE VIEW)

Technical drawing of the interior of a storage cabinet. The drawing shows a side view of the interior with a hatched area on the left representing a door or panel. Dimensions are indicated with arrows and text:

- Overall height: 98"
- Overall width: 15 3/16"
- Width of the hatched area: 25"
- Width of the open space: 65 13/16"

## INTAKE

266 3/16"

5 9/16"

28 3/4"

84"

TOP EXHAUST

25 3/8"

3 7/16"

3 5/16"

65 3/4"

TOP SUPPLY  
(NO ORIENTATION CHANGE FOR RH OR LH ACCESS)

## INTAKE

Technical drawing of a mobile office unit showing side and front elevations with dimensions.

**Side Elevation (Top):**

- Total length: 257 15/16"
- Distance from left end to side supply: 37"
- Side supply height: 60 3/4"
- Side exhaust height: 52 3/16"
- Distance from side exhaust to right end: 35 7/8"

**Front Elevation (Bottom):**

- Total width: 243 11/16"
- Distance from left end to side exhaust: 15 3/16"
- Distance from side exhaust to right end: 35 7/8"

The drawing includes a side view of the unit with a side supply and side exhaust, and a front view showing the unit's width and the location of the side exhaust.

Desert Aire has a policy of continuous product and quality improvement. Specifications and dimensions are subject to change without notice. This drawing and information contained herein are the exclusive property of the Desert Aire Corporation. Any use detrimental to the interests of Desert Aire is prohibited.

All Dimensions in Inches  
All Angles 90°  
All outside corners 0.125" fillet  
Unless Otherwise Specified

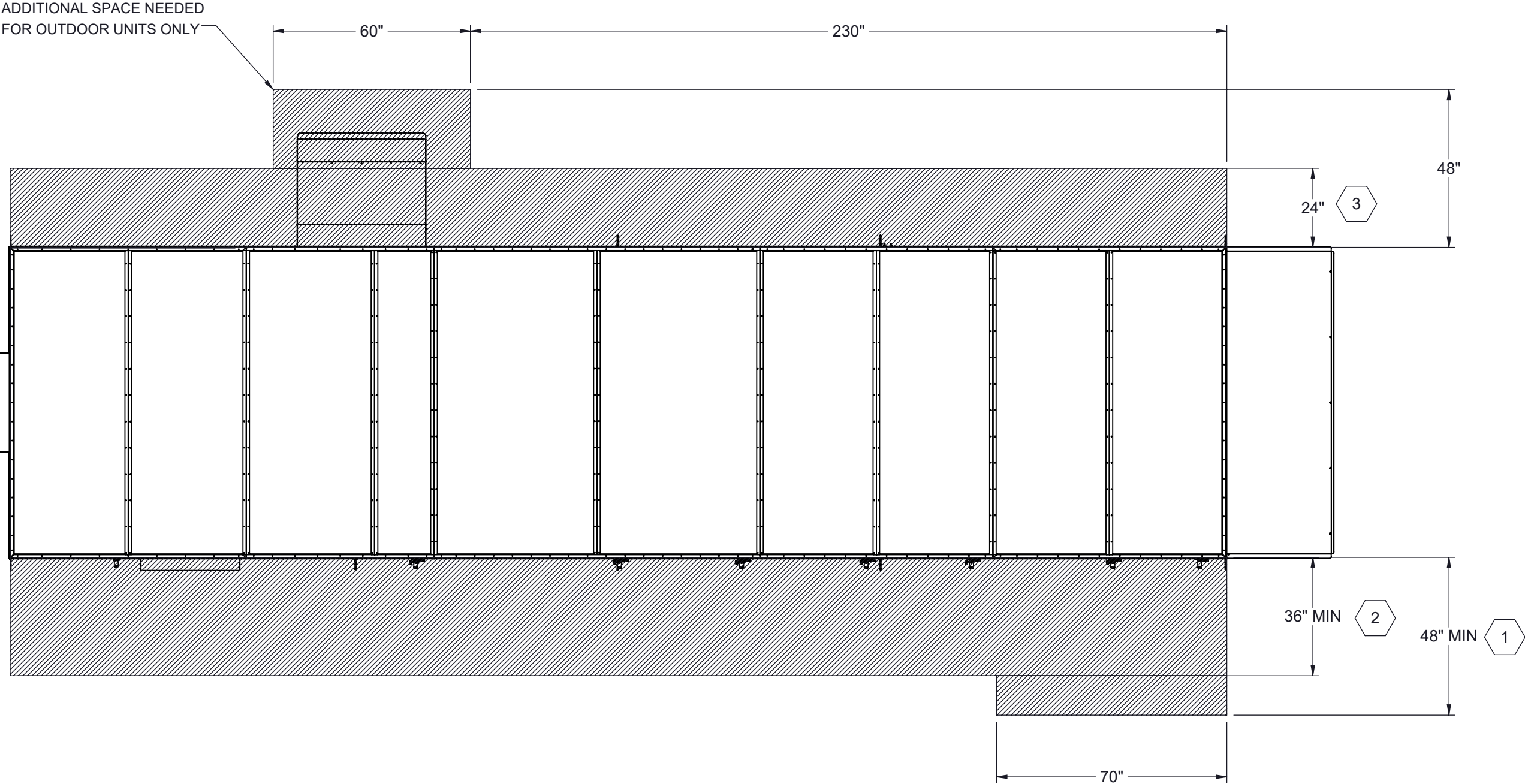
Part weight

Scale

NTS



N120 W18485 FREISTADT RD  
GERMANTOWN, WI 53022  
Tel: (262) 946-7400  
Fax: (262) 946-7401

Drawing Number	G1000-010
----------------	-----------



- 1 96" RECOMMENDED FOR FILTER ACCESS.
- 2 120" CLEARANCE ON ACCESS SIDE RECOMMENDED FOR FAN AND COIL SERVICE
- 3 REQUIRED FOR ASSEMBLY OF SECTIONED UNITS ONLY

NOTES:  
REFER TO SHEET 1 FOR GENERAL NOTES  
LEFT HAND ACCESS SHOWN IN ALL VIEWS  
RIGHT HAND ACCESS OPTIONS LOCATED WITH SAME DIMENSIONS ON OPPOSITE SIDE UNLESS OTHERWISE SPECIFIED

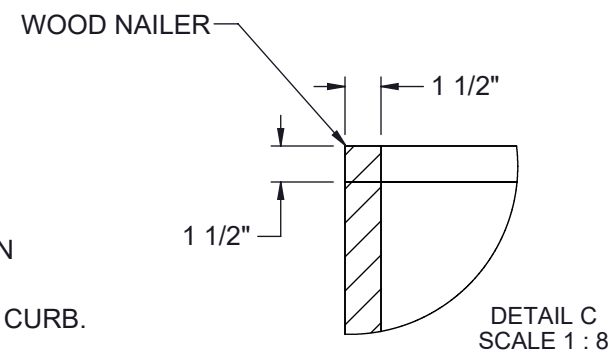
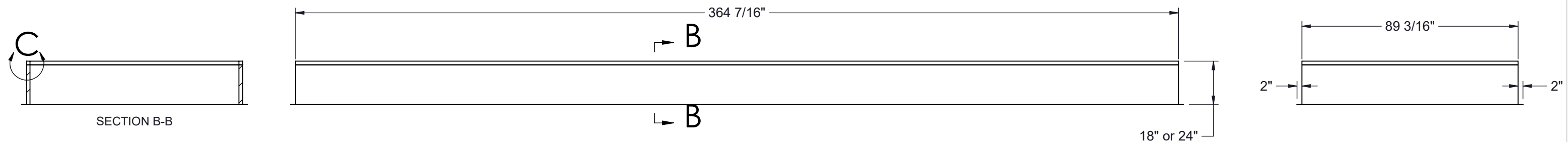
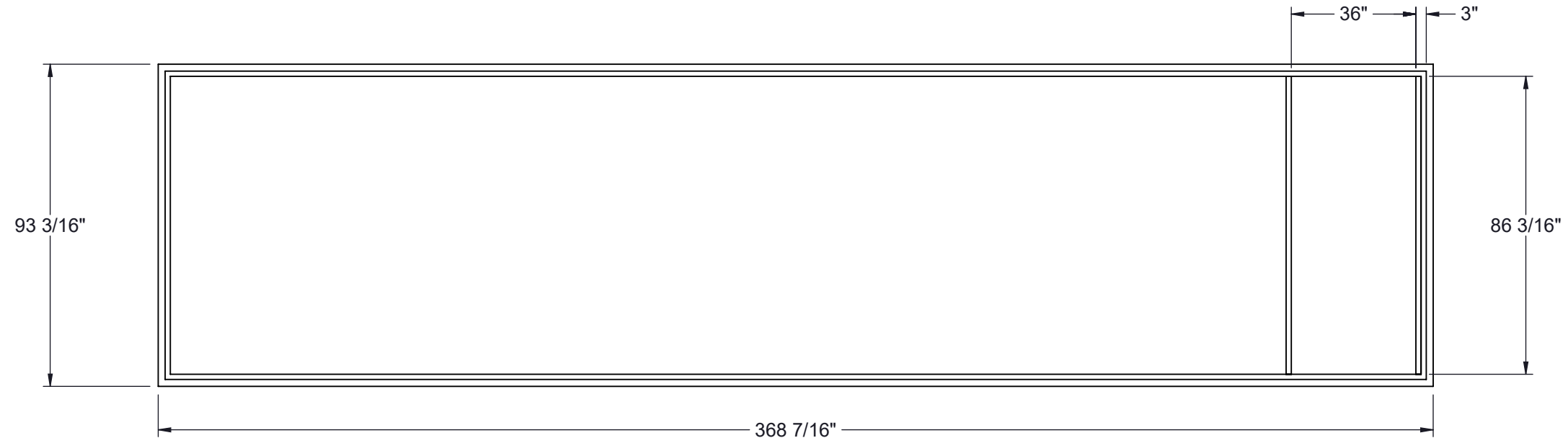
Desert Aire has a policy of continuous product and quality improvement. Specifications and dimensions are subject to change without notice. This drawing and information contained herein are the exclusive property of the Desert Aire Corporation. Any use detrimental to the interests of Desert Aire is prohibited.		All Dimensions in Inches All Angles 90° All outside corners 0.125" fillet Unless Otherwise Specified		Tolerance Unless Otherwise Specified X.X ±.125 X.XX ±.060 X.XXX ±.030 Angles ±1°		 N120 W18485 FREISTADT RD GERMANTOWN, WI 53022 Tel: (262) 946-7400 Fax: (262) 946-7401	
 Third Angle Projection		Drawn ASV		Date Released 1/19/2018		Description SP 60-80 TON SPLIT ELECT HEAT	
		Sheet 5/9		Scale NTS		Page Title UNIT CLEARANCE GA	
ALL DIMENSIONS ARE IN INCHES TOLERANCE ± 1/8"		Part weight		Rev. 8		Drawing Number G1000-010	

G1000-010

NOTES:  
REFER TO SHEET 1 FOR GENERAL NOTES

1. 14 GA GALVANIZED STEEL CONSTRUCTION
2. PRIME PAINTED AFTER FABRICATION
3. PRESSURE TREATED WOOD NAILERS
4. 1-1/2" THICK 3LB/FT^3 FIBERGLASS PERIMETER INSULATION
5. INTERNAL ANGLE REINFORCEMENT
6. CURB TO BE SHIPPED KNOCKED DOWN

UNIT TON	18" CURB	24" CURB
60-80	CB-80NENN-18	CB-80NENN-24



NUMBER AND LOCATION OF CROSS SUPPORTS IS DEPENDANT UPON THE GAUGE OF MATERIAL USED TO CONSTRUCT THE CURB, DUCT SUPPORT CONFIGURATION LENGTH OF CURB, AND WIDTH OF CURB. INSTALLATION INSTRUCTIONS INCLUDED WITH CURB SHIPMENT INDICATE THE REQUIRED POSITION FOR FIELD ASSEMBLED CURBS.

Desert Aire has a policy of continuous product and quality improvement. Specifications and dimensions are subject to change without notice. This drawing and information contained herein are the exclusive property of the Desert Aire Corporation. Any use detrimental to the interests of Desert Aire is prohibited.

ALL DIMENSIONS ARE IN INCHES  
TOLERANCE  $\pm 1/8"$

All Dimensions in Inches  
All Angles 90°  
All outside corners 0.125" fillet  
Unless Otherwise Specified



### Third Angle Projection

Part weight

Tolerance Unless Otherwise Specified	
X.X	$\pm .125$
X.XX	$\pm .060$
X.XXX	$\pm .030$
Angles	$\pm 1^\circ$

Drawn	Date Released
ASV	1/19/2018

Sheet 6/9

Scale	Rev.
NTS	8



N120 W18485 FREISTADT RD  
GERMANTOWN, WI 53022  
Tel: (262) 946-7400  
Fax: (262) 946-7401

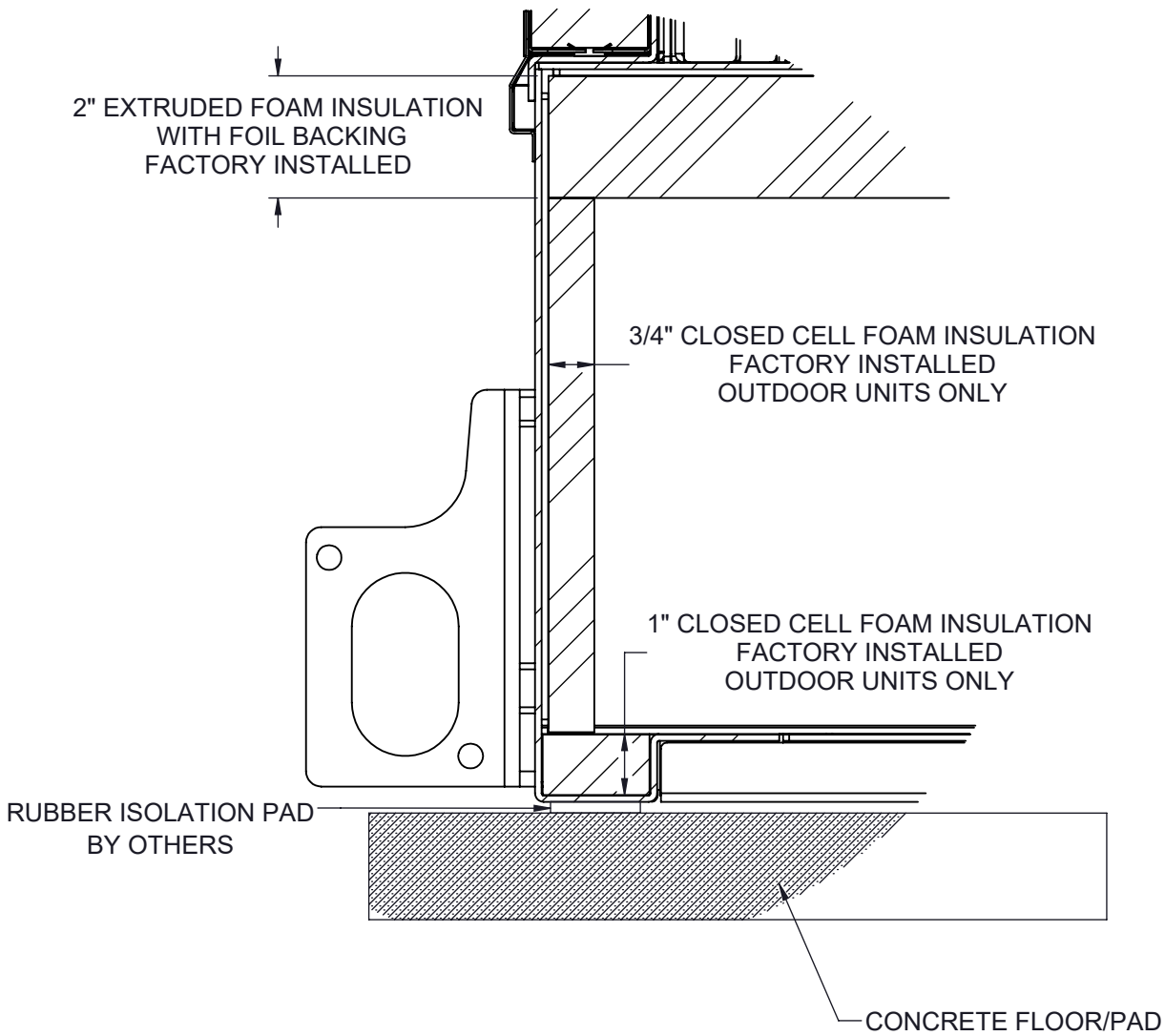
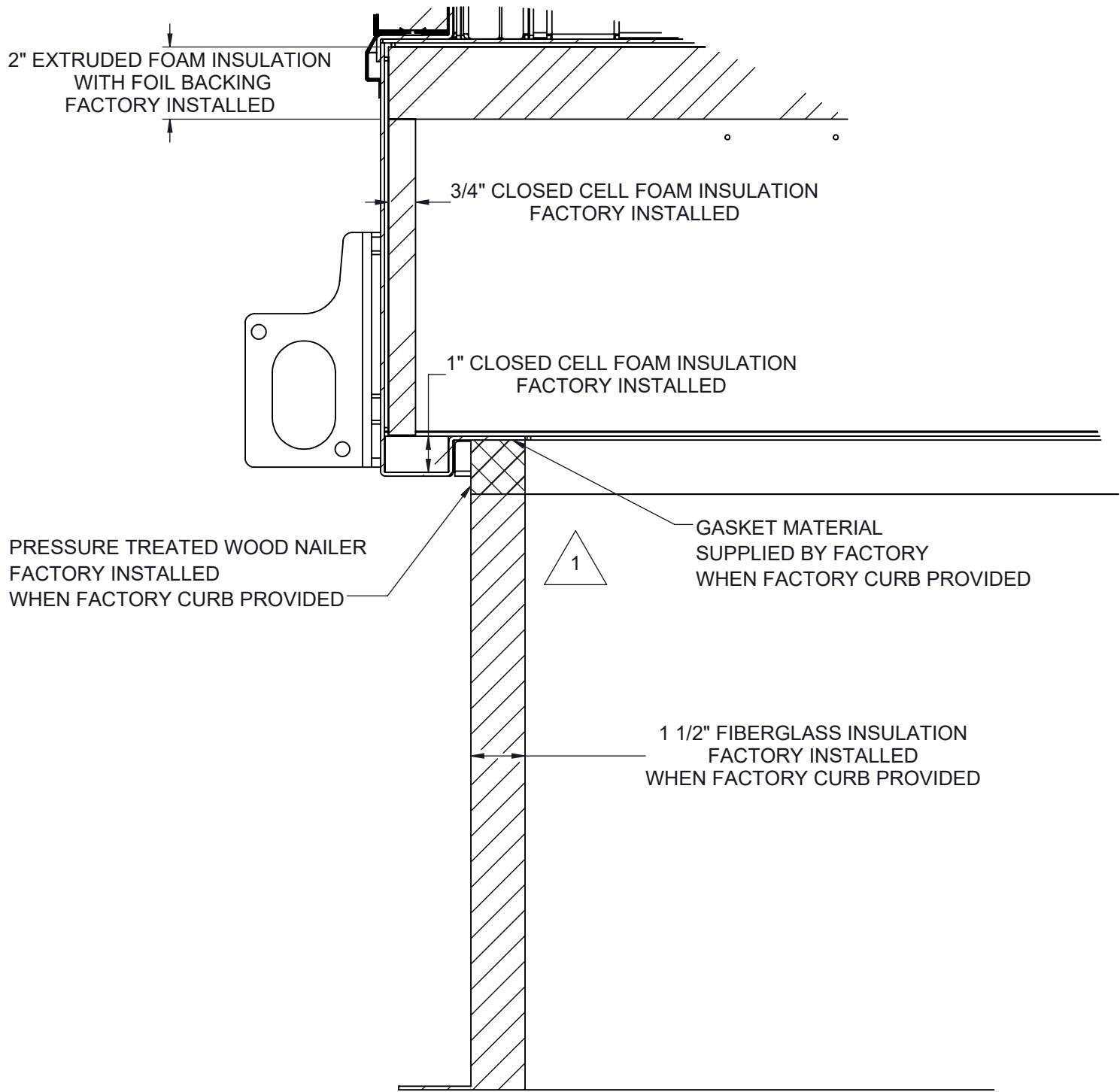
Description	SP 60-80 TON SPLIT ELECT HEAT
-------------	-------------------------------

Page Title	CURB DETAIL GA
------------	----------------

Drawing Number	G1000-010
----------------	-----------



CURB MOUNT

PAD MOUNT



1 ALL EXPOSED METAL TO BE SPRAY FOAM INSULATION AFTER INSTALLATION

NOTES:  
REFER TO SHEET 1 FOR GENERAL NOTES  
SEE SHEET 6 NOTES FOR CURB SPECIFICATIONS

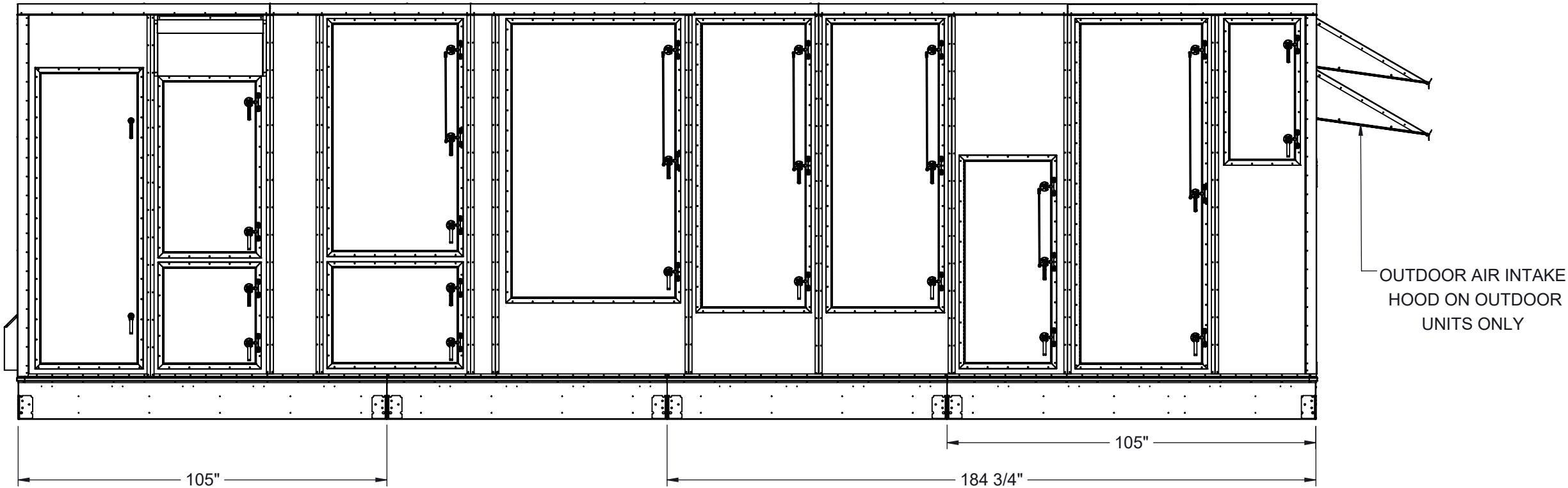
<div>Desert Aire has a policy of continuous product and quality improvement. Specifications and dimensions are subject to change without notice. This drawing and information contained herein are the exclusive property of the Desert Aire Corporation. Any use detrimental to the interests of Desert Aire is prohibited.</div> <div>ALL DIMENSIONS ARE IN INCHES TOLERANCE <math>\pm 1/8"</math></div>	<div>All Dimensions in Inches All Angles 90° All outside corners 0.125" fillet Unless Otherwise Specified</div> <div></div> <div>Third Angle Projection</div> <div>Part weight</div>	<div>Tolerance Unless Otherwise Specified X.X <math>\pm .125</math> X.XX <math>\pm .060</math> X.XXX <math>\pm .030</math> Angles <math>\pm 1^\circ</math></div>	<div><div>N120 W18485 FREISTADT RD GERMANTOWN, WI 53022 Tel: (262) 946-7400 Fax: (262) 946-7401</div></div>
		<div>Drawn ASV</div>	
		<div>Date Released 1/19/2018</div>	
		<div>Description SP 60-80 TON SPLIT ELECT HEAT</div>	
		<div>Sheet 7/9</div>	<div>Page Title MOUNTING DETAILS GA</div>
		<div>Scale NTS</div>	<div>Rev. 8</div>
		<div>Drawing Number G1000-010</div>	

SHIP LOOSE ITEMS

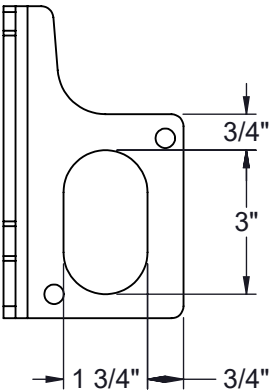
EXHAUST HOOD

OUTDOOR UNITS ONLY

DA PART NO	DESCRIPTION	QTY
HOOD	EXHAUST ASSEMBLY	1
807-023	SCREW #8-18X1/2 SS	36
990-105	CAULK WHITE	1



LUG DETAIL



**NOTES:**  
REFER TO SHEET 1 FOR GENERAL NOTES AND HOOD DETAILS

Desert Aire has a policy of continuous product and quality improvement. Specifications and dimensions are subject to change without notice. This drawing and information contained herein are the exclusive property of the Desert Aire Corporation. Any use detrimental to the interests of Desert Aire is prohibited.

ALL DIMENSIONS ARE IN INCHES  
TOLERANCE  $\pm 1/8"$

All Dimensions in Inches  
All Angles 90°  
All outside corners 0.125" fillet  
Unless Otherwise Specified



Third Angle Projection

Part weight

Tolerance Unless  
Otherwise Specified  
X.X  $\pm .125$   
X.XX  $\pm .060$   
X.XXX  $\pm .030$   
Angles  $\pm 1^\circ$

Drawn  
ASV  
Date Released  
1/19/2018

Sheet  
8/9

Scale  
NTS



N120 W18485 FREISTADT RD  
GERMANTOWN, WI 53022  
Tel: (262) 946-7400  
Fax: (262) 946-7401

Description  
SP 60-80 TON SPLIT ELECT HEAT

Page Title  
SHIPPING/LIFTING DETAILS GA

Drawing Number  
G1000-010

G1000-010

## SHIP LOOSE ITEMS

## EXHAUST HOOD

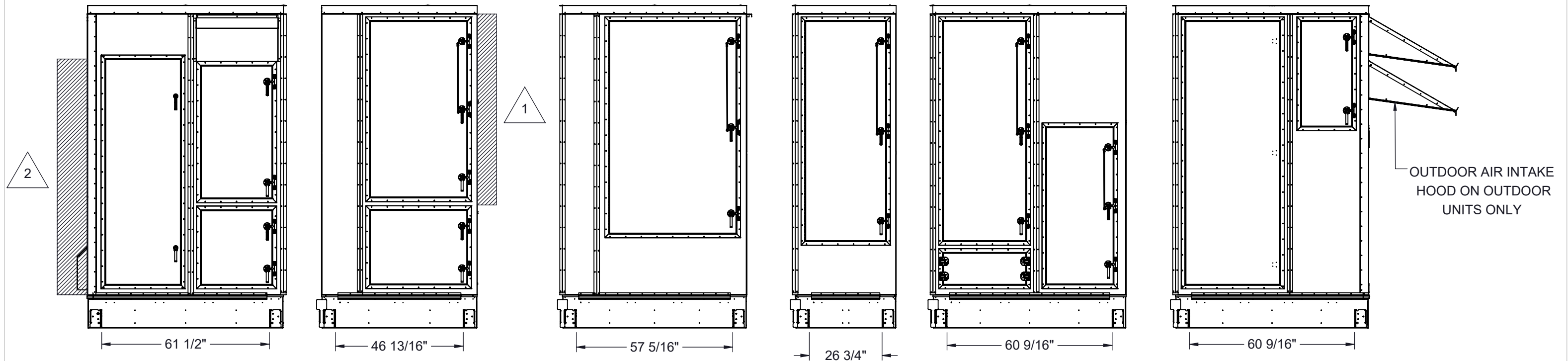
### OUTDOOR UNITS ONLY

DA PART NO	DESCRIPTION	QTY
HOOD	EXHAUST ASSEMBLY	1
807-023	SCREW #8-18X1/2 SS	36
990-105	CAULK WHITE	1

## SECTION ITEMS

DA PART NO	DESCRIPTION	QTY
807-023	SCREW #8-18X1/2 SS	860
807-007	BOLT 3/8-16X1 SS	20
807-008	WASHER 3/8 FLAT SS	20
807-009	WASHER LOCK SPLIT 3/8 SS	20
807-010	NUT 3/8-16 SS	20
807-223	SCREW #10-32x1/2 MACHINE HEX	20
950-089	TAPER SEAM SEALER 2"	150 FT (3 ROLLS)
950-090	TAPE SEAM SEALER 4"	17 FT
990-105	CAULK WHITE	9
852-098-040	BASE Z CVR SIDE,MID SEC	10
STRIPS	2.5" X 103" METAL SIDE STRIPS	10
STRIPS	2.5" X 92 1/2" METAL TOP STRIPS	5
STRIPS	1" X 3" X 24" METAL CORNER STRIPS	10

## SHIPPING AND LIFTING DETAILS FOR MULTI-SECTION CONSTRUCTION OPTION ONLY



/ -

BACKDRAFT DAMPER OPTION ADDS AN ADDITIONAL 9" TO FAN SECTION LENGTH

2

REMOTE CONDENSER/WATER CONNECTIONS WILL ADD AN ADDITION MAXIMUM OF 8"

Desert Aire has a policy of continuous product and quality improvement. Specifications and dimensions are subject to change without notice. This drawing and information contained herein are the exclusive property of the Desert Aire Corporation. Any use detrimental to the interests of Desert Aire is prohibited.

ALL DIMENSIONS ARE IN INCHES  
TOLERANCE  $\pm 1/8"$

All Dimensions in Inches  
All Angles 90°  
All outside corners 0.125" fillet  
Unless Otherwise Specified



### Third Angle Projection

Part weight

Tolerance Unless Otherwise Specified	
X.X	$\pm .125$
X.XX	$\pm .060$
X.XXX	$\pm .030$
Angles	$\pm 1^{\circ}$

Drawn	Date Released
ASV	1/19/2018

Sheet 9/9

Scale NTS

NTS	Rev. 8
-----	-----------



N120 W18485 FREISTADT RD  
GERMANTOWN, WI 53022  
Tel: (262) 946-7400  
Fax: (262) 946-7401

Description	SP 60-80 TON SPLIT ELECT HEAT
-------------	-------------------------------

Page Title  
SECTIONED LIFTING DETAILS GA

Drawing Number	G1000-010
----------------	-----------

**NOTES:**

REFER TO SHEET 1 FOR GENERAL NOTES AND HOOD DETAILS  
UNIT SHIPPED IN SIX SECTIONS SEE I/O MANUAL FOR ASSEMBLY DETAILS