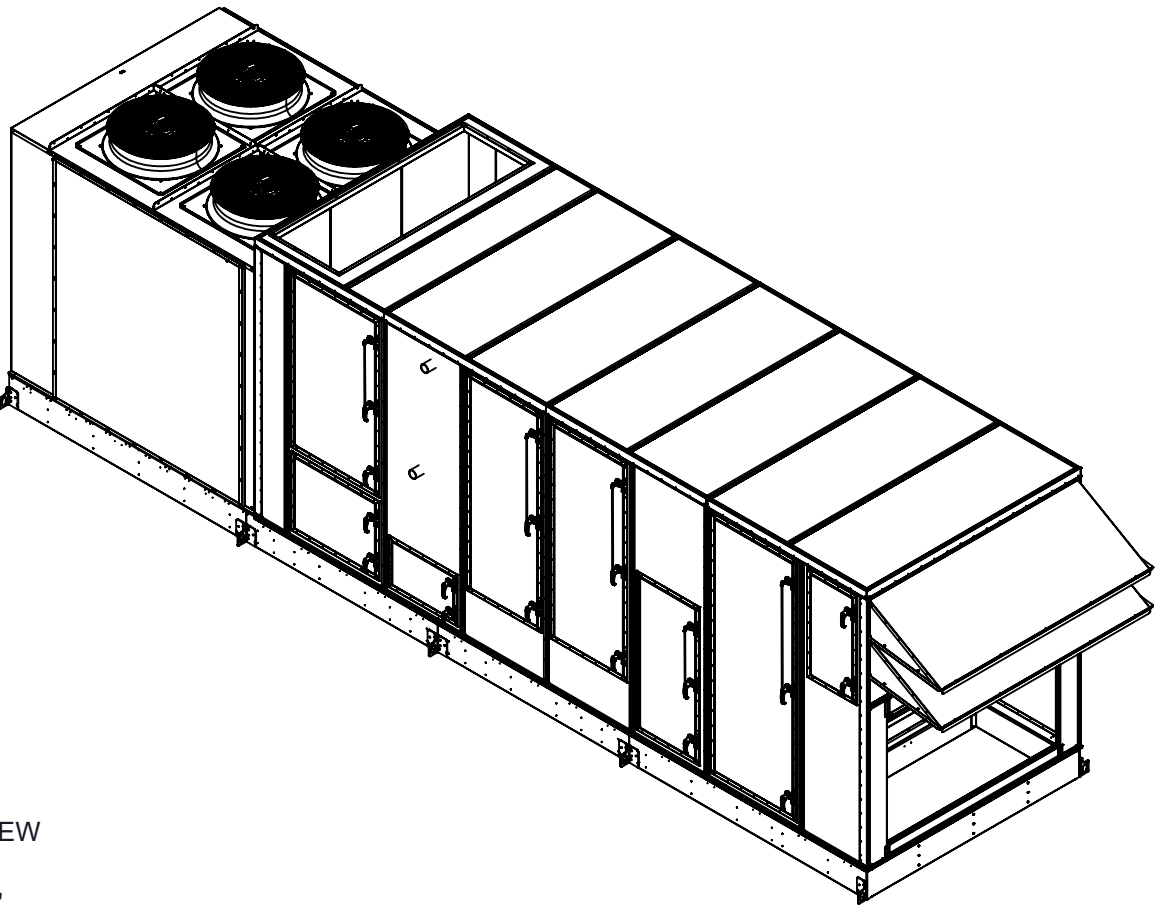
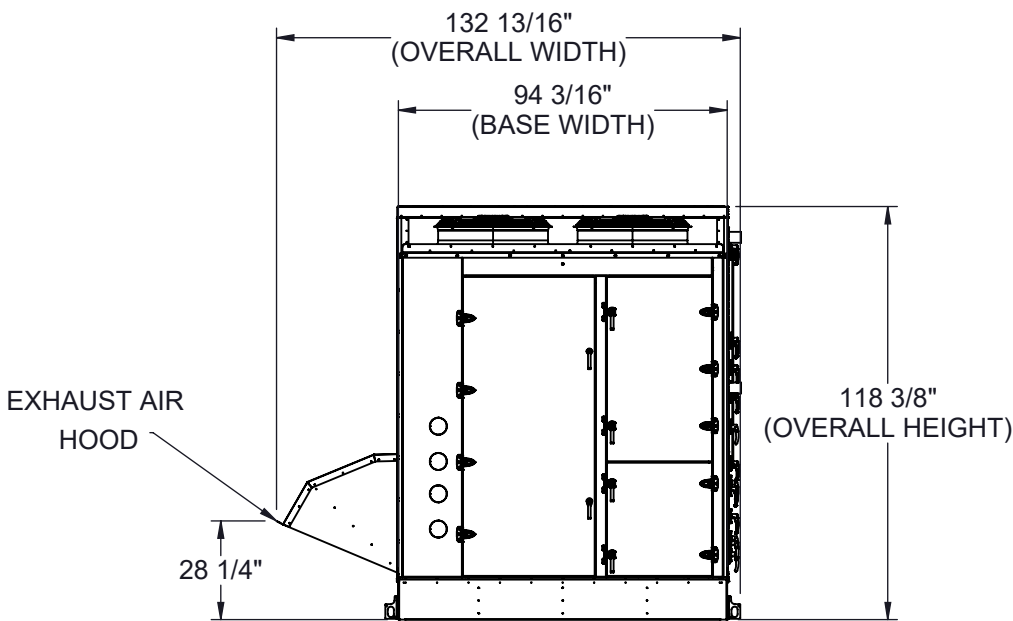


GENERAL NOTES FOR APPLICABLE SHEETS:

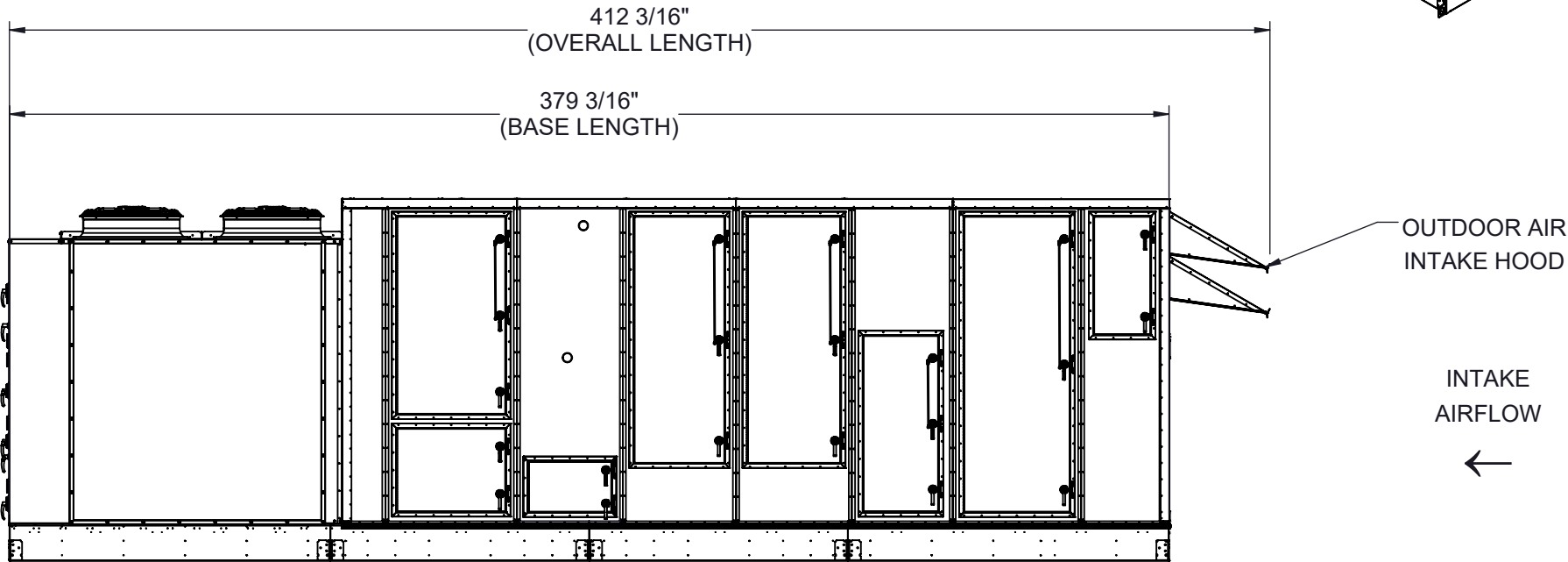
LEFT HAND ACCESS SHOWN IN ALL VIEWS
RIGHT HAND ACCESS OPTIONS LOCATED WITH SAME DIMENSIONS ON OPPOSITE SIDE UNLESS OTHERWISE SPECIFIED
WEIGHTS SHOWN REFLECT FULLY OPTIONED ESTIMATED UNIT WEIGHT



BACK VIEW



LEFT SIDE VIEW



| UNIT SIZE | ESTIMATED WEIGHT (lbs.) |
|--------------|-------------------------|
| 60 - 80 TONS | 19000 |

Desert Aire has a policy of continuous product and quality improvement. Specifications and dimensions are subject to change without notice. This drawing and information contained herein are the exclusive property of the Desert Aire Corporation. Any use detrimental to the interests of Desert Aire is prohibited.

ALL DIMENSIONS ARE IN INCHES
TOLERANCE $\pm 1/8"$

All Dimensions in Inches
All Angles 90°
All outside corners 0.125" fillet
Unless Otherwise Specified



Third Angle Projection

Part weight

Tolerance Unless Otherwise Specified
X.X $\pm .125$
X.XX $\pm .060$
X.XXX $\pm .030$
Angles $\pm 1^\circ$

Drawn **ASV** Date Released **1/19/2018**

Sheet **1/8**

Scale **NTS** Rev. **7**

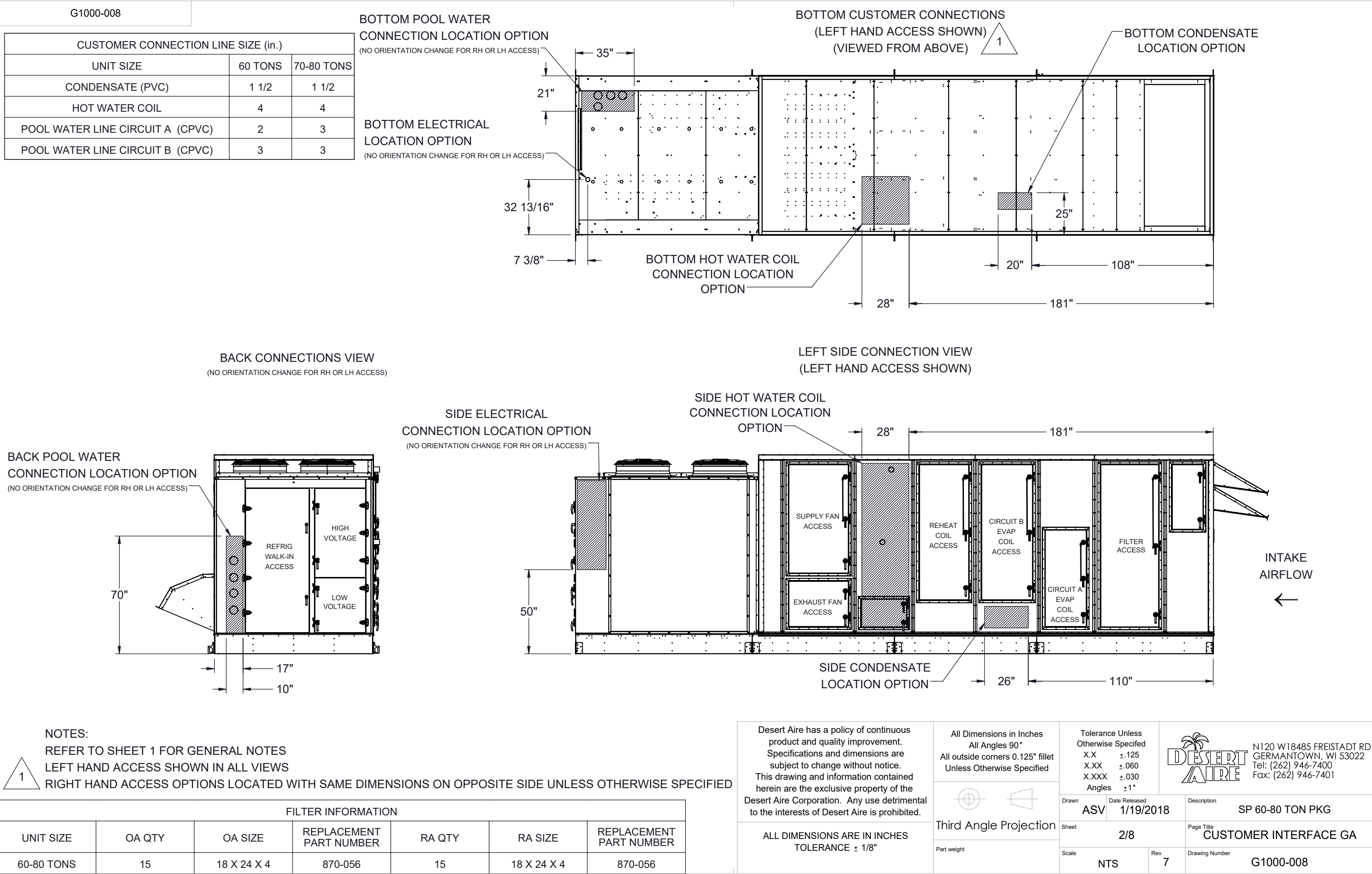


N120 W18485 FREISTADT RD
GERMANTOWN, WI 53022
Tel: (262) 946-7400
Fax: (262) 946-7401

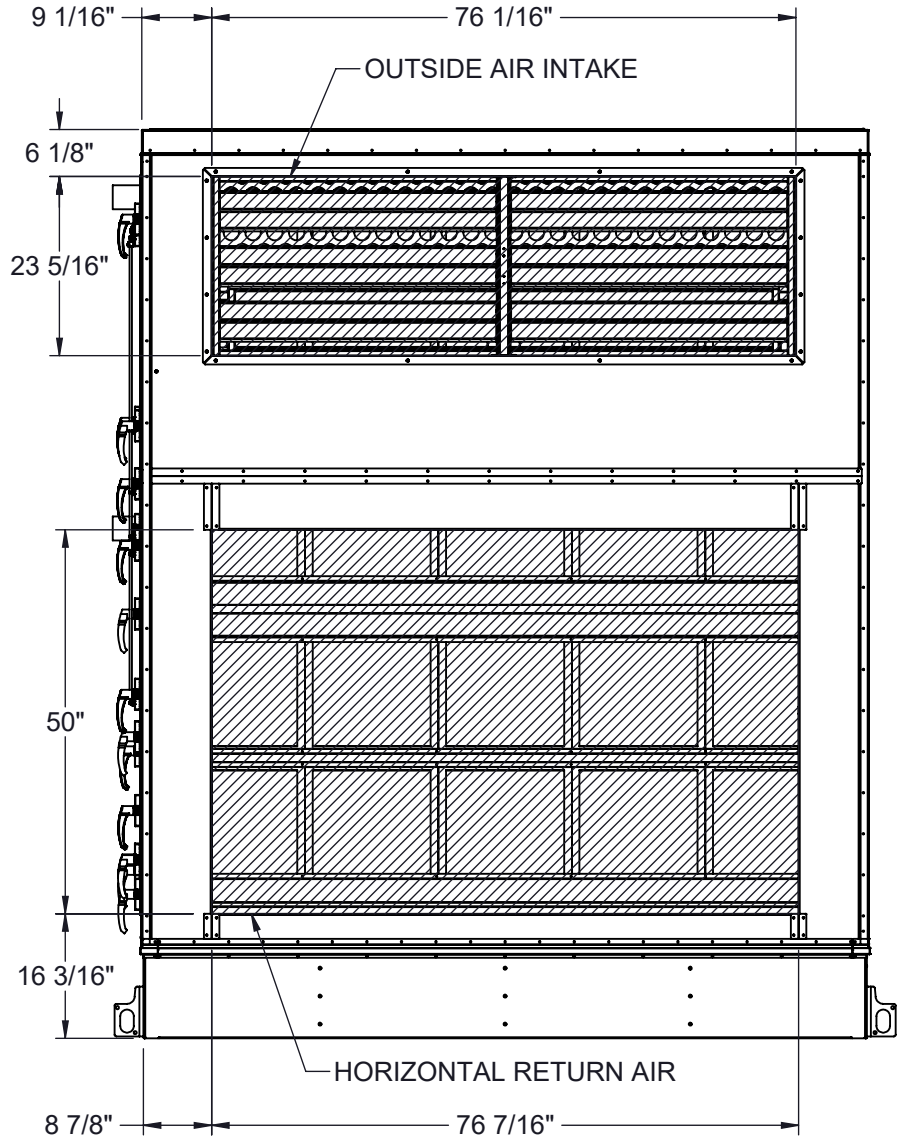
Description **SP 60-80 TON PKG**

Page Title **GENERAL ARRANGEMENT**

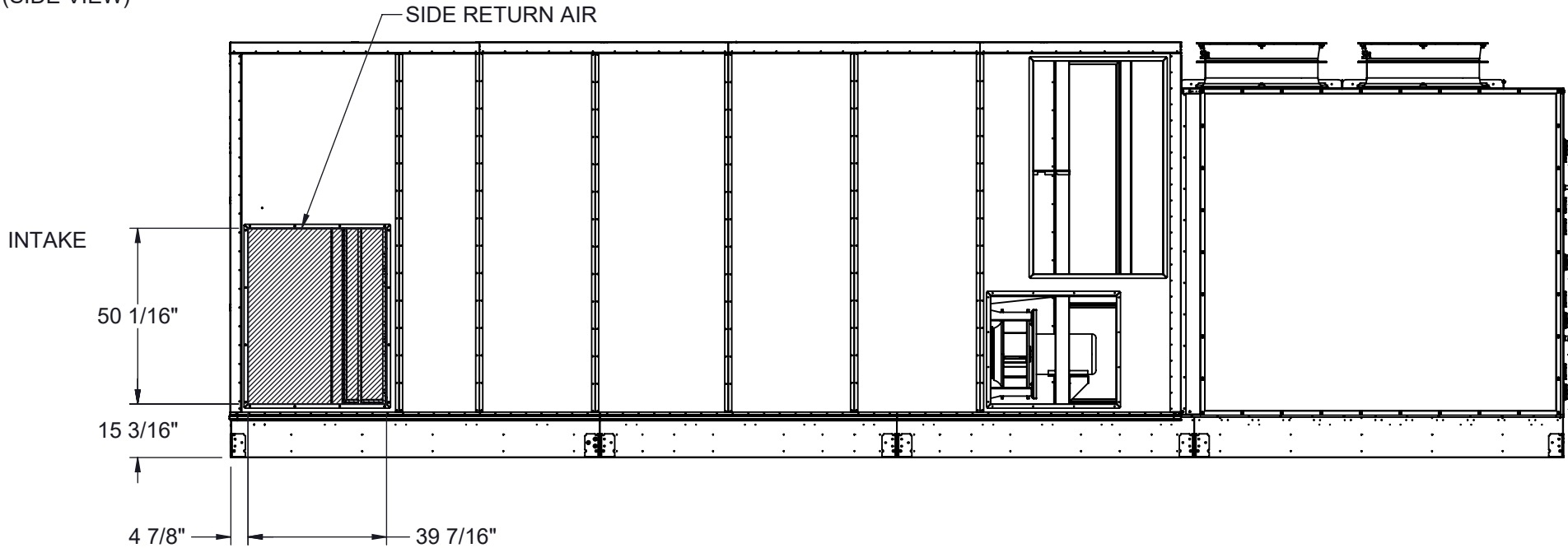
Drawing Number **G1000-008**



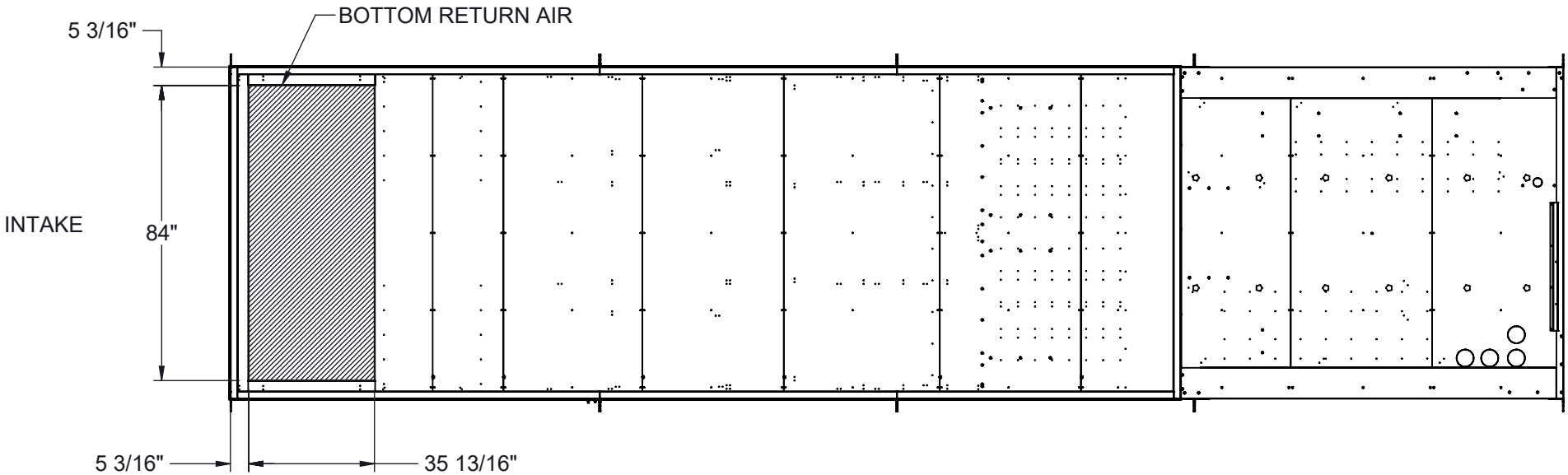
HORIZONTAL RETURN AIR OPTION
(INTAKE VIEW)



SIDE RETURN AIR OPTION
(SIDE VIEW)



BOTTOM RETURN AIR OPTION
(VIEW FROM ABOVE)



NOTES:
REFER TO SHEET 1 FOR GENERAL NOTES
HOODS REMOVED FOR CLARITY
ACCESS SIDE RETURN AIR OPTION WILL SHIFT FILTER SECTION DOORS TO NON-ACCESS SIDE
OUTSIDE AIR INTAKE LOCATED IN THE SAME POSITION REGARDLESS OF OPTIONS

Desert Aire has a policy of continuous product and quality improvement. Specifications and dimensions are subject to change without notice. This drawing and information contained herein are the exclusive property of the Desert Aire Corporation. Any use detrimental to the interests of Desert Aire is prohibited.

ALL DIMENSIONS ARE IN INCHES
TOLERANCE $\pm 1/8"$

All Dimensions in Inches
All Angles 90°
All outside corners 0.125" fillet
Unless Otherwise Specified



Third Angle Projection

Part weight

Tolerance Unless
Otherwise Specified
X.X $\pm .125$
X.XX $\pm .060$
X.XXX $\pm .030$
Angles $\pm 1^\circ$

Drawn
ASV
Date Released
1/19/2018

Sheet
3/8

Scale
NTS



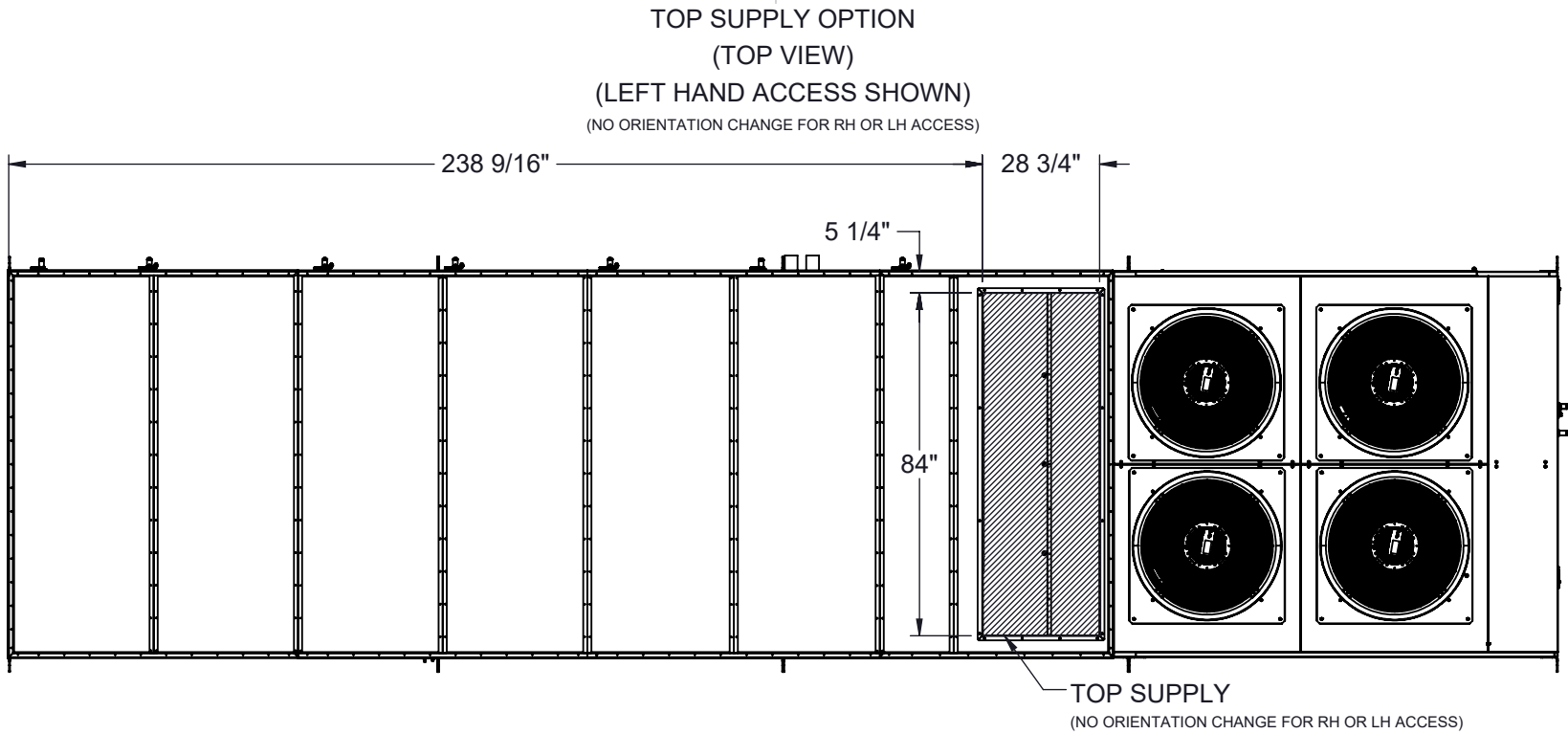
N120 W18485 FREISTADT RD
GERMANTOWN, WI 53022
Tel: (262) 946-7400
Fax: (262) 946-7401

Description
SP 60-80 TON PKG

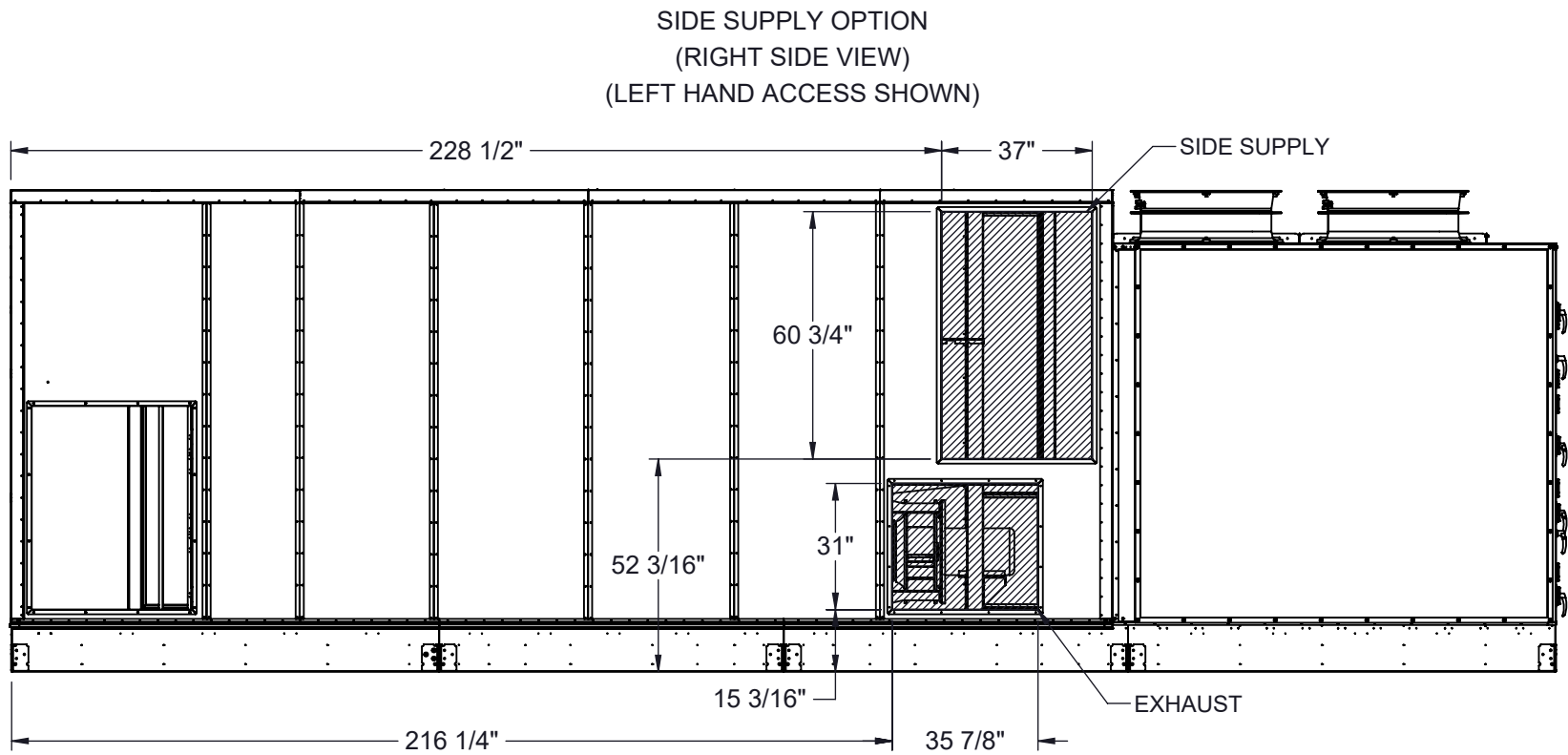
Page Title
INTAKE OPTIONS GA

Drawing Number
G1000-008

INTAKE



INTAKE



NOTES:
REFER TO SHEET 1 FOR GENERAL NOTES
LEFT HAND ACCESS SHOWN IN ALL VIEWS UNLESS OTHERWISE SPECIFIED
RIGHT HAND ACCESS OPTIONS LOCATED WITH SAME DIMENSIONS ON OPPOSITE SIDE UNLESS OTHERWISE SPECIFIED
HOODS REMOVED FOR CLARITY
ACCESS SIDE SUPPLY AIR OPTION WILL SHIFT FAN SECTION DOORS TO NON-ACCESS SIDE

Desert Aire has a policy of continuous product and quality improvement. Specifications and dimensions are subject to change without notice. This drawing and information contained herein are the exclusive property of the Desert Aire Corporation. Any use detrimental to the interests of Desert Aire is prohibited.

ALL DIMENSIONS ARE IN INCHES
TOLERANCE $\pm 1/8"$

All Dimensions in Inches
All Angles 90°
All outside corners 0.125" fillet
Unless Otherwise Specified



Third Angle Projection

Part weight

Tolerance Unless
Otherwise Specified
X.X $\pm .125$
X.XX $\pm .060$
X.XXX $\pm .030$
Angles $\pm 1^\circ$

Drawn
ASV
Date Released
1/19/2018

Sheet
4/8

Scale
NTS
Rev.
7

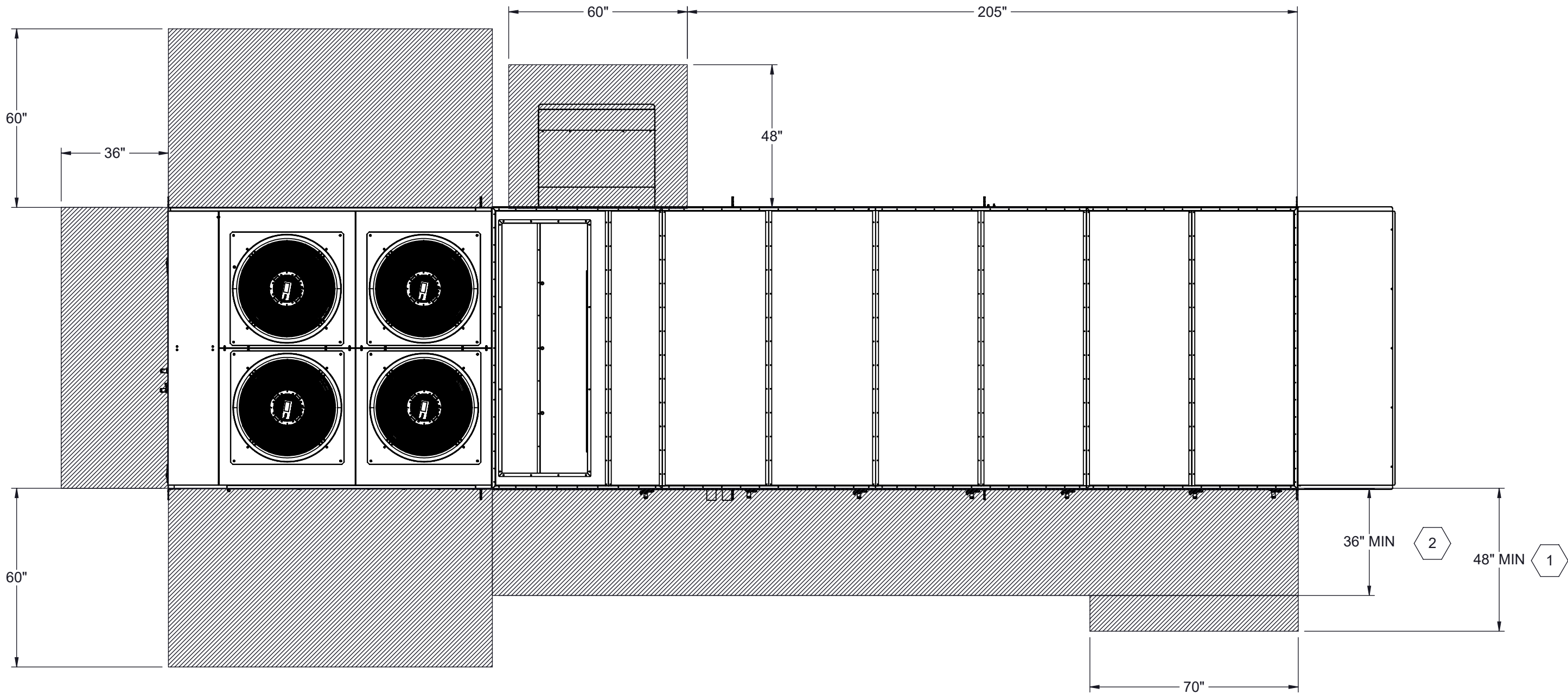


N120 W18485 FREISTADT RD
GERMANTOWN, WI 53022
Tel: (262) 946-7400
Fax: (262) 946-7401

Description
SP 60-80 TON PKG

Page Title
DISCHARGE OPTIONS GA



Drawing Number
G1000-008



1 96" RECOMMENDED FOR FILTER ACCESS.

2 120" CLEARANCE ON ACCESS SIDE RECOMMENDED FOR FAN AND COIL SERVICE

NOTES:
REFER TO SHEET 1 FOR GENERAL NOTES
LEFT HAND ACCESS SHOWN IN ALL VIEWS
RIGHT HAND ACCESS OPTIONS LOCATED WITH SAME DIMENSIONS ON OPPOSITE SIDE UNLESS OTHERWISE SPECIFIED

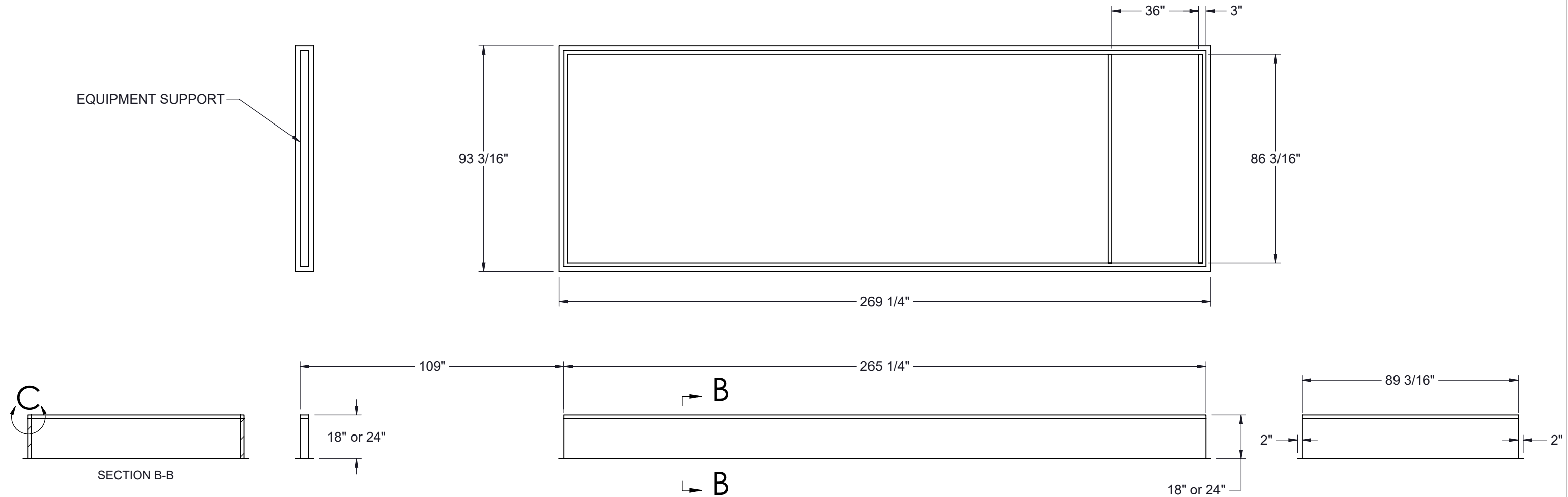
| | | | | | | | |
|---|--|---|--|--|----------------------------|--|--|
| Desert Aire has a policy of continuous product and quality improvement. Specifications and dimensions are subject to change without notice. This drawing and information contained herein are the exclusive property of the Desert Aire Corporation. Any use detrimental to the interests of Desert Aire is prohibited. | | All Dimensions in Inches All Angles 90° All outside corners 0.125" fillet Unless Otherwise Specified | | Tolerance Unless Otherwise Specified X.X ±.125 X.XX ±.060 X.XXX ±.030 Angles ±1° | |  N120 W18485 FREISTADT RD GERMANTOWN, WI 53022 Tel: (262) 946-7400 Fax: (262) 946-7401 | |
| ALL DIMENSIONS ARE IN INCHES TOLERANCE ± 1/8" | | Third Angle Projection  | | Drawn ASV | Date Released 1/19/2018 | Description SP 60-80 TON PKG | |
| Part weight | | | | Sheet 5/8 | | Page Title UNIT CLEARANCE GA | |
| | | | | Scale NTS | Rev. 7 | Drawing Number G1000-008 | |

G1000-008

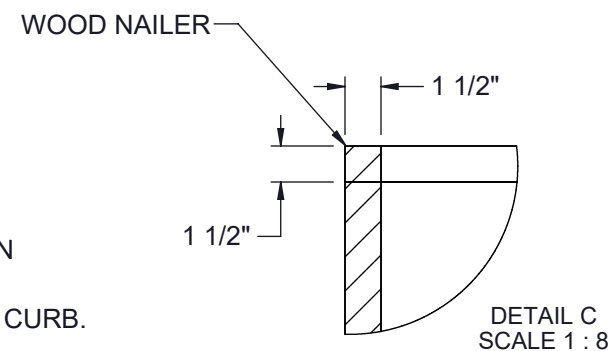
NOTES:
REFER TO SHEET 1 FOR GENERAL NOTES

1. 14 GA GALVANIZED STEEL CONSTRUCTION
2. PRIME PAINTED AFTER FABRICATION
3. PRESSURE TREATED WOOD NAILERS
4. 1-1/2" THICK 3LB/FT³ FIBERGLASS PERIMETER INSULATION
5. INTERNAL ANGLE REINFORCEMENT
6. CURB TO BE SHIPPED KNOCKED DOWN

| | | |
|----------|--------------|--------------|
| UNIT TON | 18" CURB | 24" CURB |
| 60-80 | CB-80PCNN-18 | CB-80PCNN-24 |



NUMBER AND LOCATION OF CROSS SUPPORTS IS DEPENDANT UPON THE GUAGE OF MATERIAL USED TO CONSTRUCT THE CURB, DUCT SUPPORT CONFIGURATION LENGTH OF CURB, AND WIDTH OF CURB. INSTALLATION INSTRUCTIONS INCLUDED WITH CURB SHIPMENT INDICATE THE REQUIRED POSITION FOR FIELD ASSEMBLED CURBS.



Desert Aire has a policy of continuous product and quality improvement. Specifications and dimensions are subject to change without notice. This drawing and information contained herein are the exclusive property of the Desert Aire Corporation. Any use detrimental to the interests of Desert Aire is prohibited.

ALL DIMENSIONS ARE IN INCHES
TOLERANCE $\pm 1/8"$

All Dimensions in Inches
All Angles 90°
All outside corners 0.125" fillet
Unless Otherwise Specified



Third Angle Projection

Part weight

| | |
|---|-------|
| Tolerance Unless Otherwise Specified | |
| X.X | ±.125 |
| X.XX | ±.060 |
| X.XXX | ±.030 |
| Angles | ±1° |

| | |
|-------|---------------|
| Drawn | Date Released |
| ASV | 1/19/2018 |

Sheet 6/8

Scale

NTS



N120 W18485 FREISTADT RD
GERMANTOWN, WI 53022
Tel: (262) 946-7400
Fax: (262) 946-7401

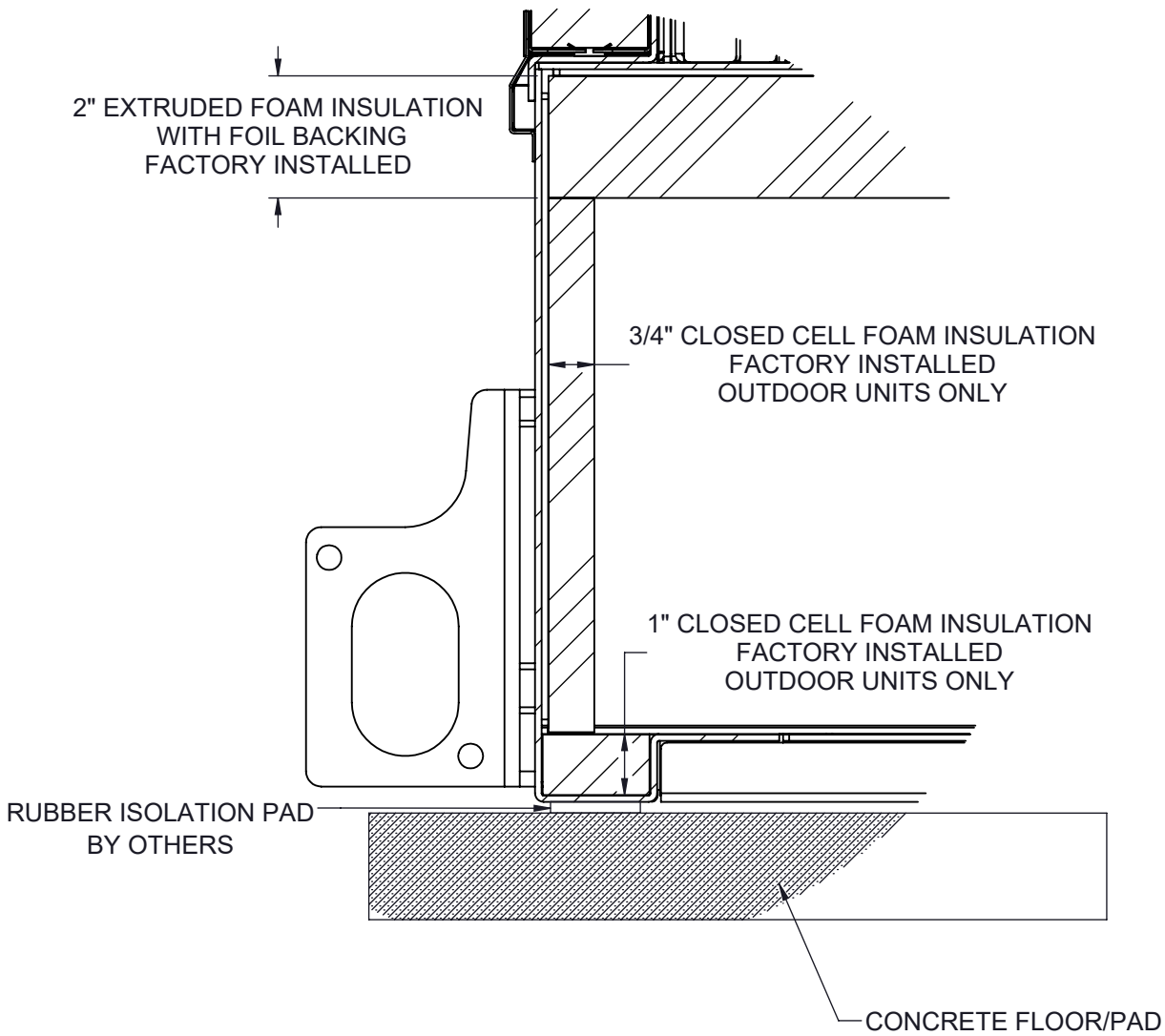
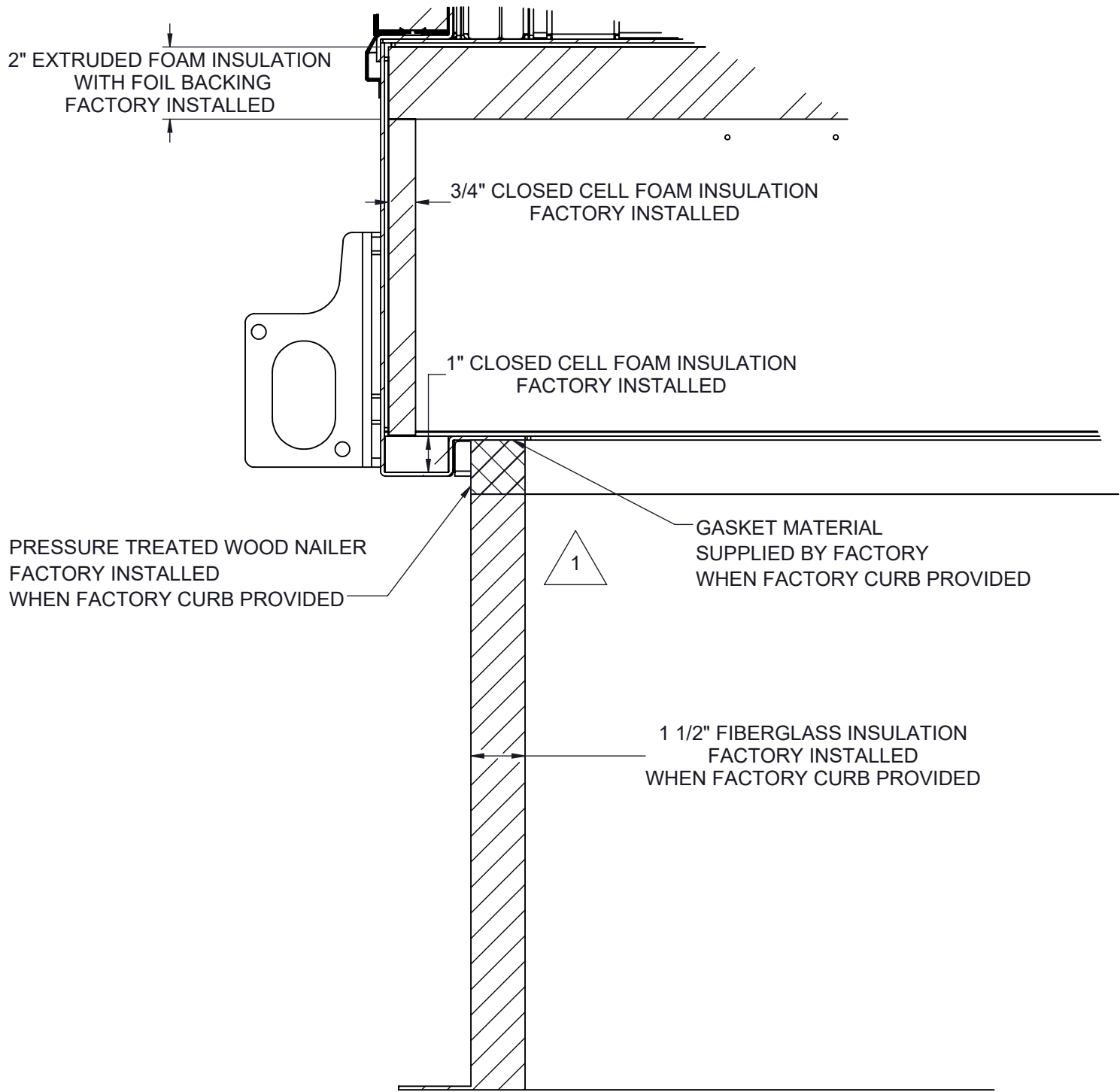
| | |
|-------------|------------------|
| Description | SP 60-80 TON PKG |
|-------------|------------------|

| | |
|------------|----------------|
| Page Title | CURB DETAIL GA |
|------------|----------------|

| | |
|----------------|-----------|
| Drawing Number | G1000-008 |
|----------------|-----------|

CURB MOUNT

PAD MOUNT



1 ALL EXPOSED METAL TO BE SPRAY FOAM INSULATION AFTER INSTALLATION

NOTES:
REFER TO SHEET 1 FOR GENERAL NOTES
SEE SHEET 6 NOTES FOR CURB SPECIFICATIONS

Desert Aire has a policy of continuous product and quality improvement. Specifications and dimensions are subject to change without notice. This drawing and information contained herein are the exclusive property of the Desert Aire Corporation. Any use detrimental to the interests of Desert Aire is prohibited.

ALL DIMENSIONS ARE IN INCHES
TOLERANCE $\pm 1/8"$

All Dimensions in Inches
All Angles 90°
All outside corners 0.125" fillet
Unless Otherwise Specified



Third Angle Projection

Part weight

Tolerance Unless Otherwise Specified
X.X $\pm .125$
X.XX $\pm .060$
X.XXX $\pm .030$
Angles $\pm 1^\circ$

Drawn
ASV
Date Released
1/19/2018

Sheet
7/8

Scale
NTS



N120 W18485 FREISTADT RD
GERMANTOWN, WI 53022
Tel: (262) 946-7400
Fax: (262) 946-7401

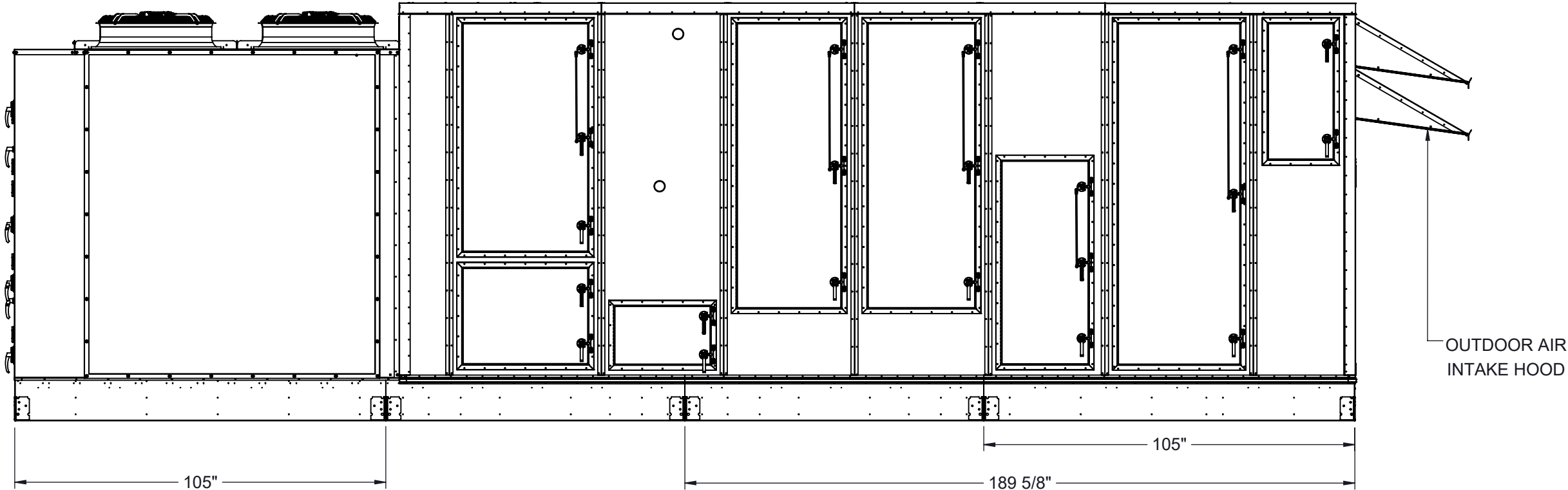
Description
SP 60-80 TON PKG

Page Title
MOUNTING DETAILS GA

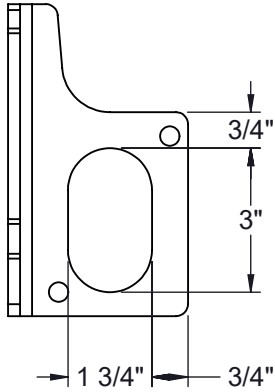
Drawing Number
G1000-008

SHIP LOOSE ITEMS
EXHAUST HOOD

| DA PART NO | DESCRIPTION | QTY |
|------------|--------------------|-----|
| HOOD | EXHAUST ASSEMBLY | 1 |
| 807-023 | SCREW #8-18X1/2 SS | 36 |
| 990-105 | CAULK WHITE | 1 |



LUG DETAIL




NOTES:
REFER TO SHEET 1 FOR GENERAL NOTES AND HOOD DETAILS

Desert Aire has a policy of continuous product and quality improvement. Specifications and dimensions are subject to change without notice. This drawing and information contained herein are the exclusive property of the Desert Aire Corporation. Any use detrimental to the interests of Desert Aire is prohibited.


ALL DIMENSIONS ARE IN INCHES
TOLERANCE $\pm 1/8"$

All Dimensions in Inches
All Angles 90°
All outside corners 0.125" fillet
Unless Otherwise Specified

Third Angle Projection

Part weight

| | |
|--------------------------------------|---------------|
| Tolerance Unless Otherwise Specified | |
| X.X | $\pm .125$ |
| X.XX | $\pm .060$ |
| X.XXX | $\pm .030$ |
| Angles | $\pm 1^\circ$ |



N120 W18485 FREISTADT RD
GERMANTOWN, WI 53022
Tel: (262) 946-7400
Fax: (262) 946-7401

| | | |
|---------------------|-----------------------------------|--|
| Drawn ASV | Date Released 1/19/2018 | Description SP 60-80 TON PKG |
| Sheet | 8/8 | Page Title SHIPPING/LIFTING DETAILS GA |
| Scale NTS | Rev. 7 | Drawing Number G1000-008 |