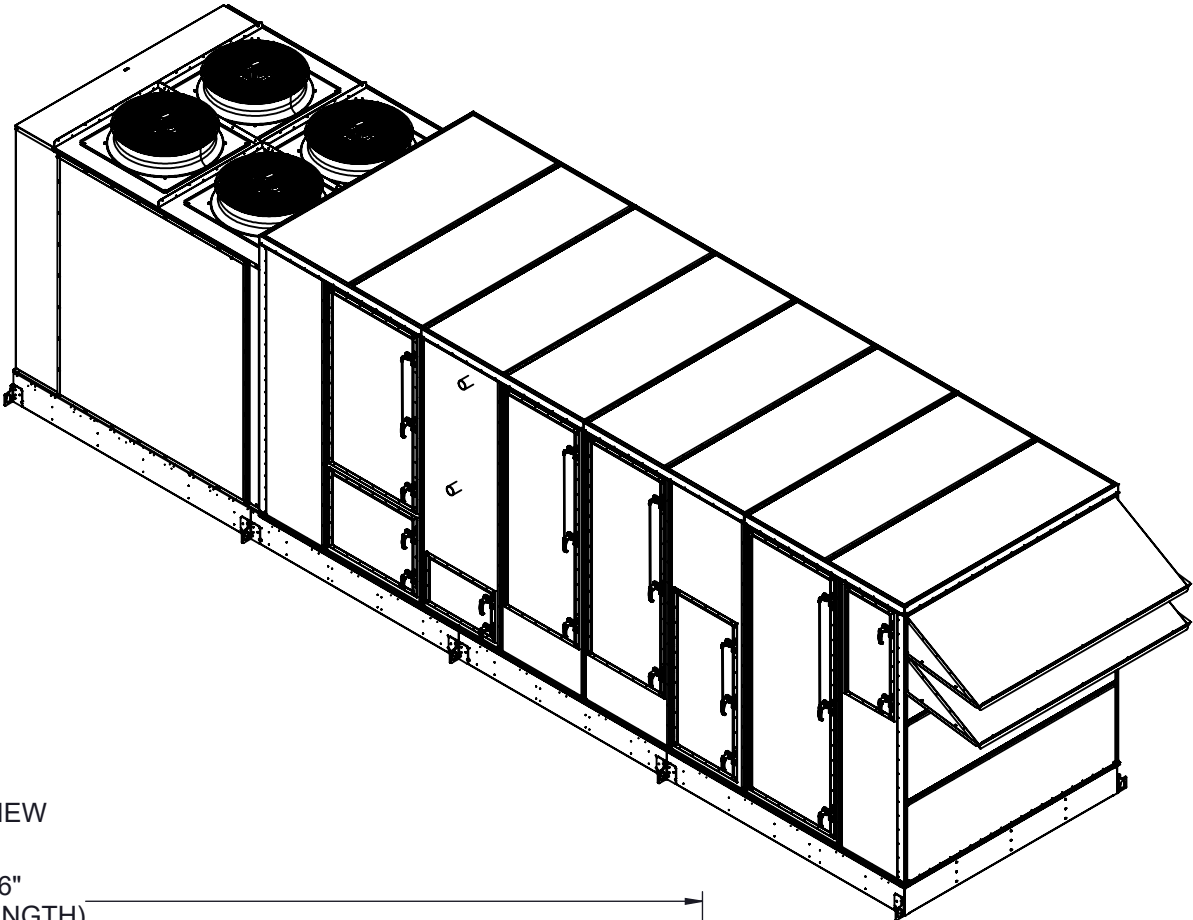
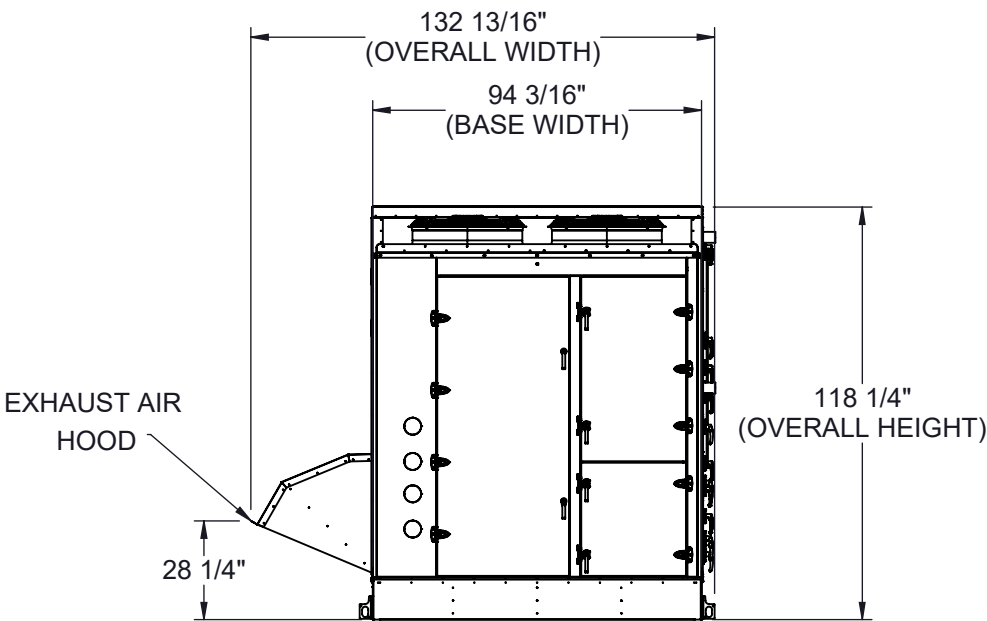


GENERAL NOTES FOR APPLICABLE SHEETS:

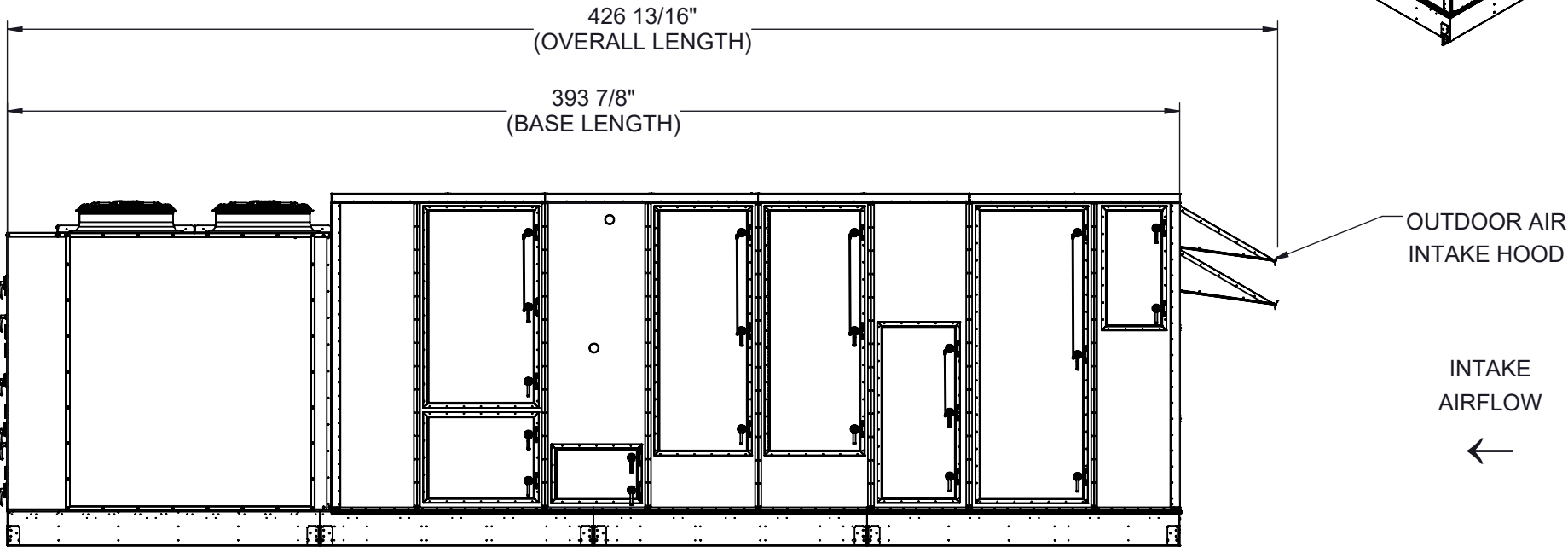
LEFT HAND ACCESS SHOWN IN ALL VIEWS
RIGHT HAND ACCESS OPTIONS LOCATED WITH SAME DIMENSIONS ON OPPOSITE SIDE UNLESS OTHERWISE SPECIFIED
WEIGHTS SHOWN REFLECT FULLY OPTIONED ESTIMATED UNIT WEIGHT



BACK VIEW



LEFT SIDE VIEW



UNIT SIZE	ESTIMATED WEIGHT (lbs.)
60 - 80 TONS	19500

Desert Aire has a policy of continuous product and quality improvement. Specifications and dimensions are subject to change without notice. This drawing and information contained herein are the exclusive property of the Desert Aire Corporation. Any use detrimental to the interests of Desert Aire is prohibited.

ALL DIMENSIONS ARE IN INCHES
TOLERANCE $\pm 1/8"$

All Dimensions in Inches
All Angles 90°
All outside corners 0.125" fillet
Unless Otherwise Specified

Third Angle Projection

Part weight

Tolerance Unless Otherwise Specified	
X.X	$\pm .125$
X.XX	$\pm .060$
X.XXX	$\pm .030$
Angles	$\pm 1^\circ$

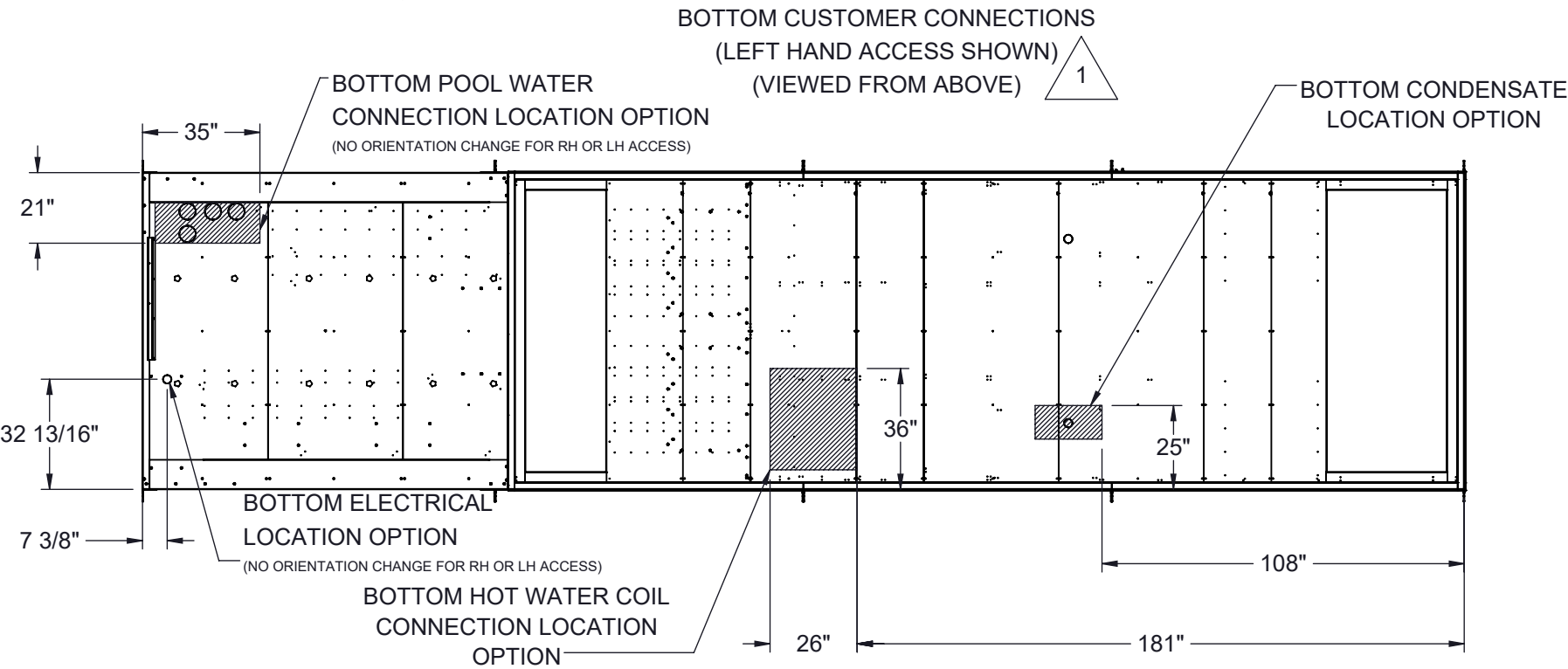
Drawn	ASV	Date Released	1/19/2018
Sheet	1/8		
Scale	NTS		Rev. 7

DESERT AIRE

N120 W18485 FREISTADT RD
GERMANTOWN, WI 53022
Tel: (262) 946-7400
Fax: (262) 946-7401

Description	SP 60-80 TON PKG HWC
Page Title	GENERAL ARRANGEMENT
Drawing Number	G1000-007

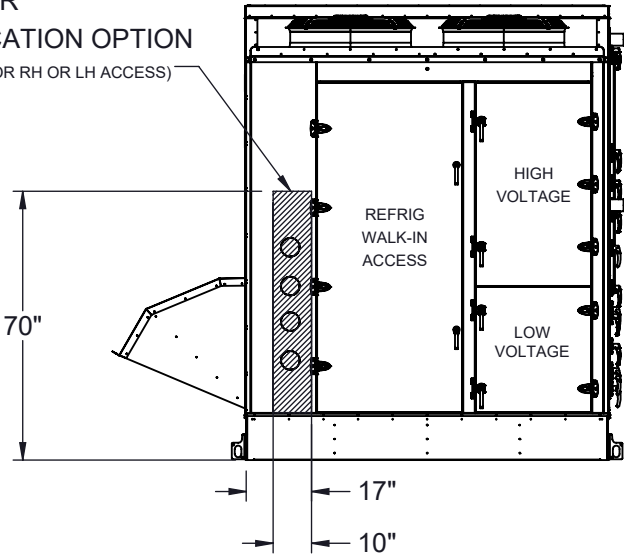
CUSTOMER CONNECTION LINE SIZE (in.)		
UNIT SIZE	60 TONS	70-80 TONS
CONDENSATE (PVC)	1 1/2	1 1/2
HOT WATER COIL	4	4
POOL WATER LINE CIRCUIT A (CPVC)	2	3
POOL WATER LINE CIRCUIT B (CPVC)	3	3



BACK CONNECTIONS VIEW
(NO ORIENTATION CHANGE FOR RH OR LH ACCESS)

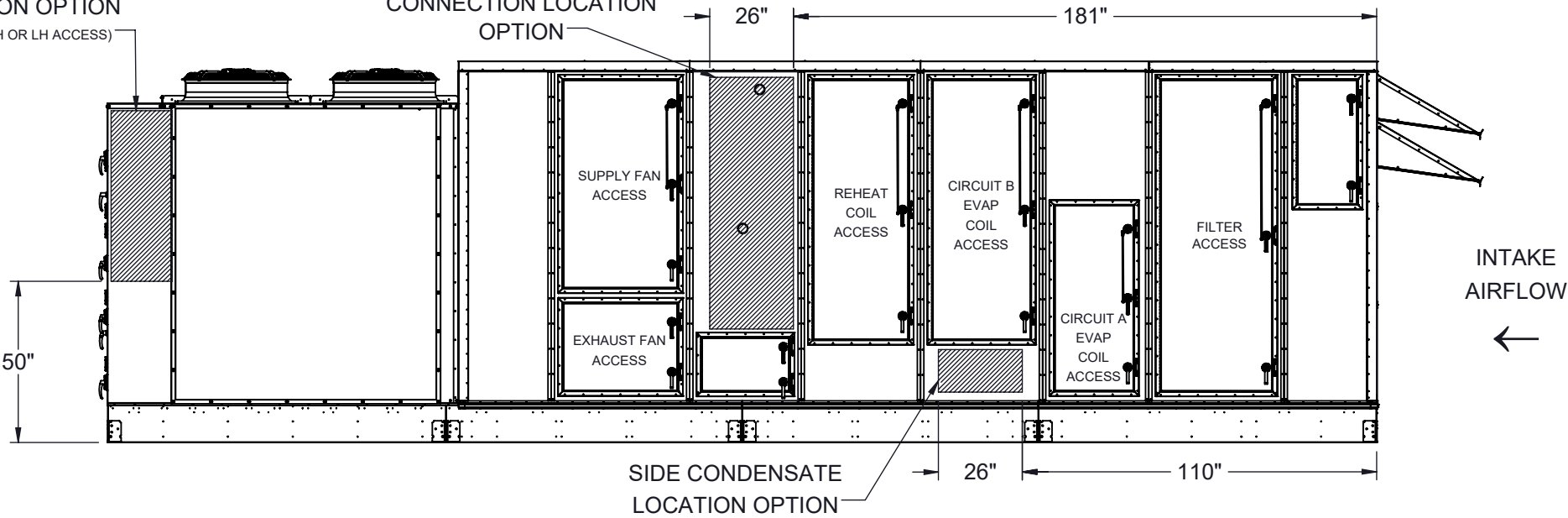
LEFT SIDE CONNECTION VIEW
(LEFT HAND ACCESS SHOWN)

BACK POOL WATER
CONNECTION LOCATION OPTION
(NO ORIENTATION CHANGE FOR RH OR LH ACCESS)



SIDE ELECTRICAL
CONNECTION LOCATION OPTION
(NO ORIENTATION CHANGE FOR RH OR LH ACCESS)

SIDE HOT WATER COIL
CONNECTION LOCATION
OPTION



NOTES:
REFER TO SHEET 1 FOR GENERAL NOTES
LEFT HAND ACCESS SHOWN IN ALL VIEWS
RIGHT HAND ACCESS OPTIONS LOCATED WITH SAME DIMENSIONS ON OPPOSITE SIDE UNLESS OTHERWISE SPECIFIED



FILTER INFORMATION						
UNIT SIZE	OA QTY	OA SIZE	REPLACEMENT PART NUMBER	RA QTY	RA SIZE	REPLACEMENT PART NUMBER
60-80 TONS	15	18 X 24 X 4	870-056	15	18 X 24 X 4	870-056

Desert Aire has a policy of continuous product and quality improvement. Specifications and dimensions are subject to change without notice. This drawing and information contained herein are the exclusive property of the Desert Aire Corporation. Any use detrimental to the interests of Desert Aire is prohibited.

ALL DIMENSIONS ARE IN INCHES
TOLERANCE ± 1/8"

All Dimensions in Inches
All Angles 90°
All outside corners 0.125" fillet
Unless Otherwise Specified

Third Angle Projection

Part weight

Tolerance Unless Otherwise Specified
X.X ±.125
X.XX ±.060
X.XXX ±.030
Angles ±1°

Drawn **ASV** Date Released **1/19/2018**

Sheet **2/8**

Scale **NTS** Rev. **7**

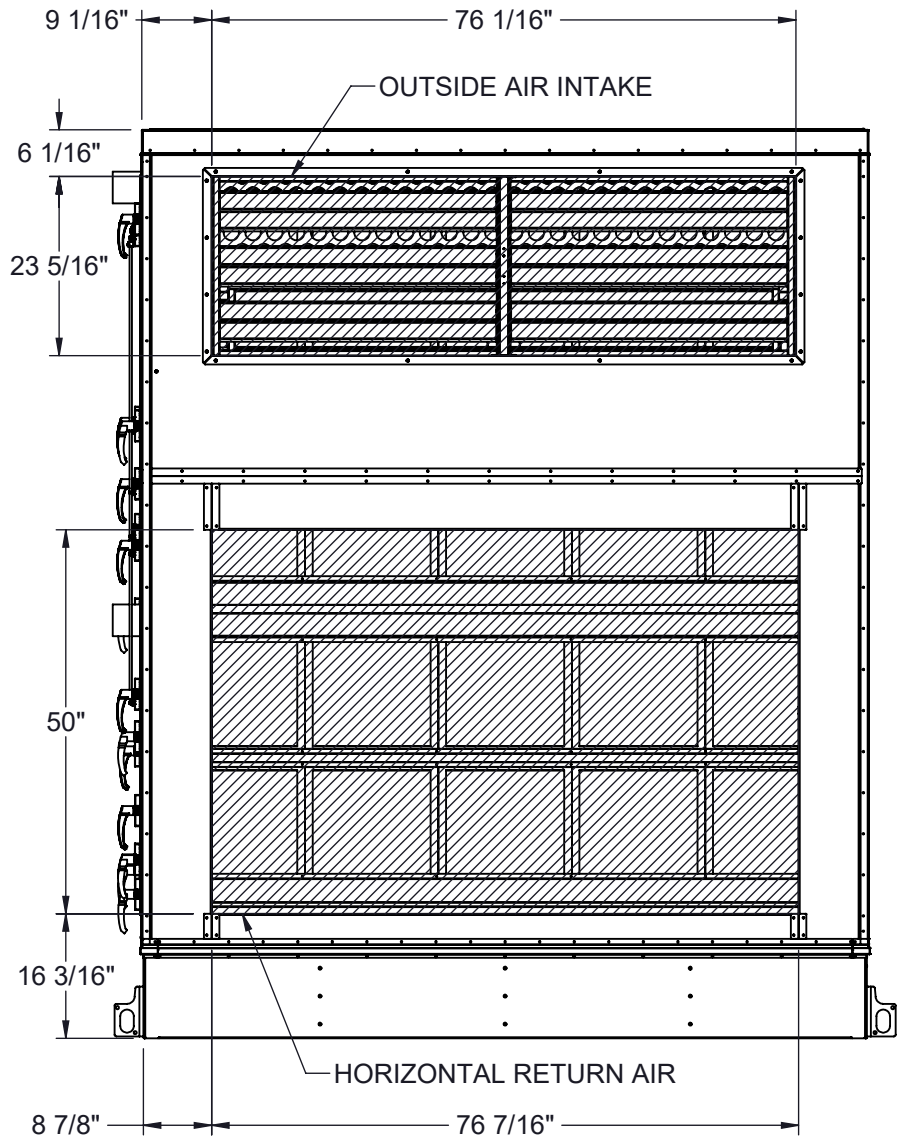
N120 W18485 FREISTADT RD
GERMANTOWN, WI 53022
Tel: (262) 946-7400
Fax: (262) 946-7401

Description **SP 60-80 TON PKG HWC**

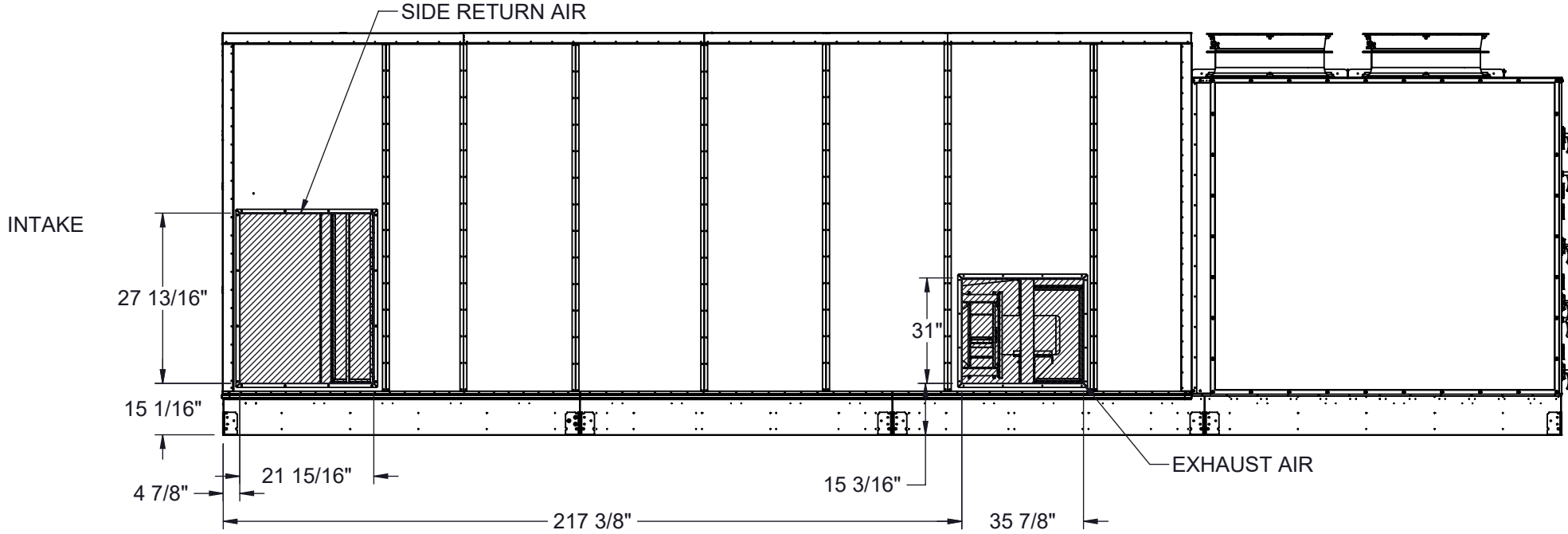
Page Title **CUSTOMER INTERFACE GA**

Drawing Number **G1000-007**

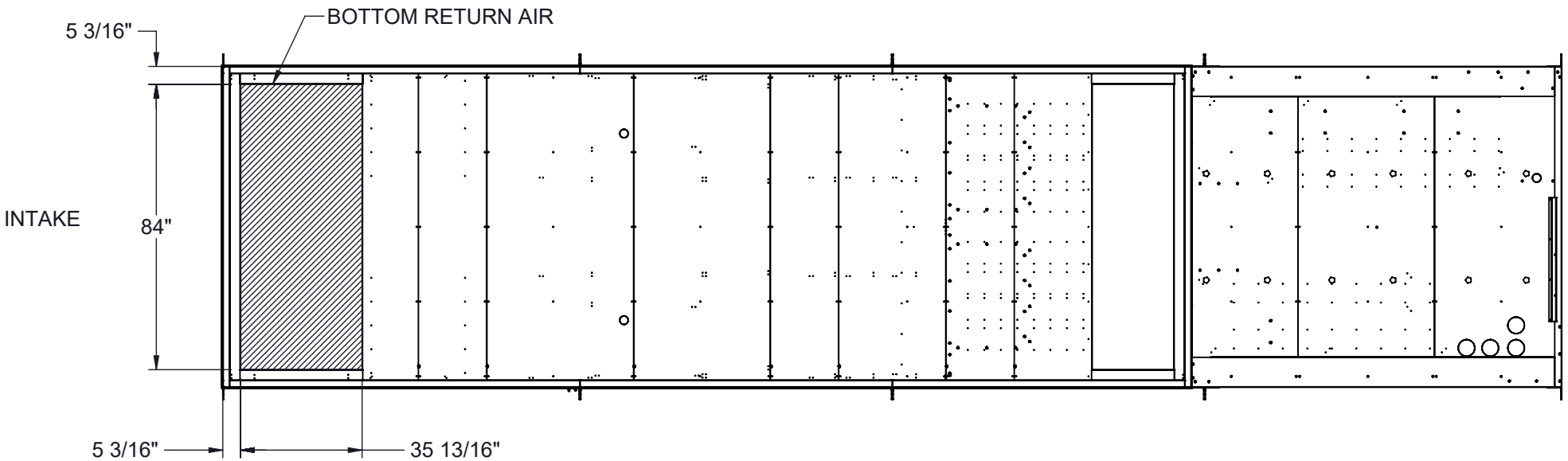
HORIZONTAL RETURN AIR OPTION
(INTAKE VIEW)
(NO ORIENTATION CHANGE FOR RH OR LH ACCESS)



SIDE RETURN AIR OPTION
(SIDE VIEW)



BOTTOM RETURN AIR OPTION
(VIEW FROM ABOVE)



NOTES:
REFER TO SHEET 1 FOR GENERAL NOTES
HOODS REMOVED FOR CLARITY
ACCESS SIDE RETURN AIR OPTION WILL SHIFT FILTER SECTION DOORS TO NON-ACCESS SIDE
OUTSIDE AIR INTAKE LOCATED IN THE SAME POSITION REGARDLESS OF OPTIONS

Desert Aire has a policy of continuous product and quality improvement. Specifications and dimensions are subject to change without notice. This drawing and information contained herein are the exclusive property of the Desert Aire Corporation. Any use detrimental to the interests of Desert Aire is prohibited.

ALL DIMENSIONS ARE IN INCHES
TOLERANCE $\pm 1/8"$

All Dimensions in Inches
All Angles 90°
All outside corners 0.125" fillet
Unless Otherwise Specified



Third Angle Projection

Part weight

Tolerance Unless
Otherwise Specified
X.X $\pm .125$
X.XX $\pm .060$
X.XXX $\pm .030$
Angles $\pm 1^\circ$

Drawn
ASV
Date Released
1/19/2018

Sheet
3/8

Scale
NTS



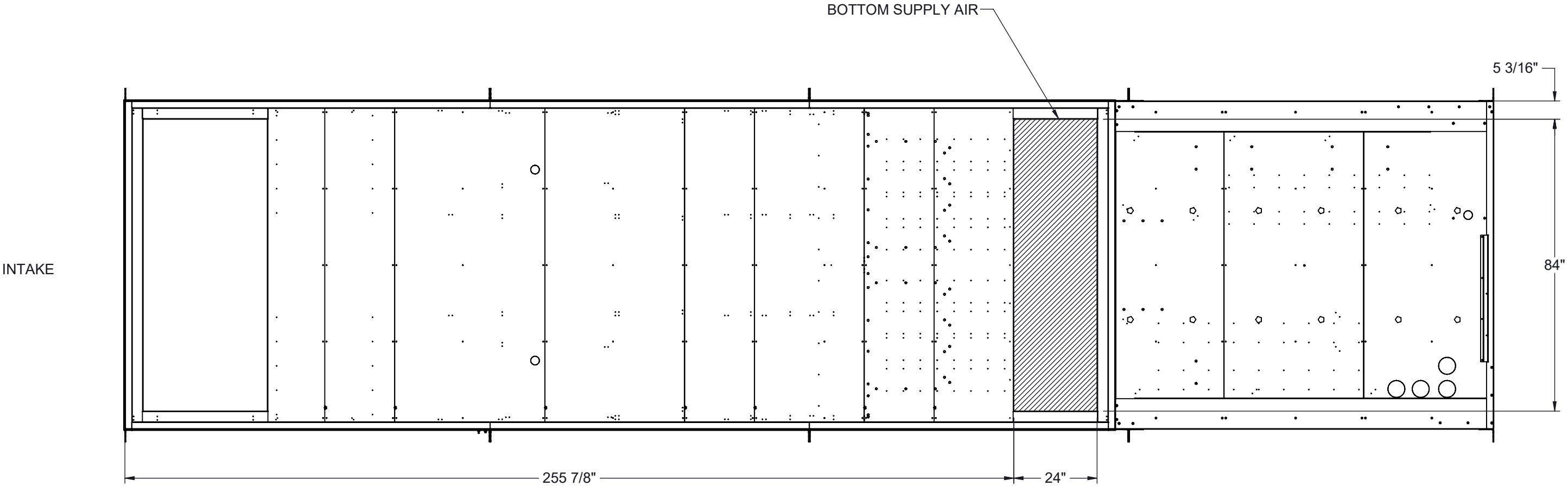
N120 W18485 FREISTADT RD
GERMANTOWN, WI 53022
Tel: (262) 946-7400
Fax: (262) 946-7401

Description
SP 60-80 TON PKG HWC



Page Title
INTAKE OPTIONS GA

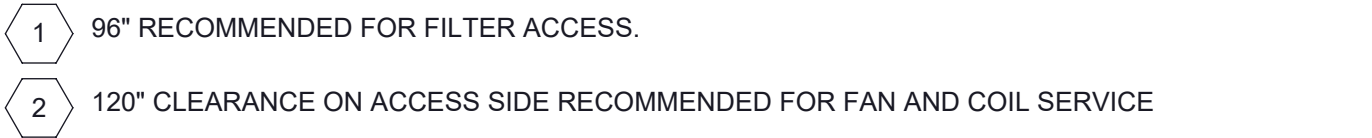
Drawing Number
G1000-007

BOTTOM SUPPLY OPTION
 (VIEW FROM ABOVE)
 (NO ORIENTATION CHANGE FOR RH OR LH ACCESS)





NOTES:
 REFER TO SHEET 1 FOR GENERAL NOTES
 LEFT HAND ACCESS SHOWN IN ALL VIEWS UNLESS OTHERWISE SPECIFIED
 RIGHT HAND ACCESS OPTIONS LOCATED WITH SAME DIMENSIONS ON OPPOSITE SIDE UNLESS OTHERWISE SPECIFIED
 HOODS REMOVED FOR CLARITY
 ACCESS SIDE SUPPLY AIR OPTION WILL SHIFT FAN SECTION DOORS TO NON-ACCESS SIDE

Desert Aire has a policy of continuous product and quality improvement. Specifications and dimensions are subject to change without notice. This drawing and information contained herein are the exclusive property of the Desert Aire Corporation. Any use detrimental to the interests of Desert Aire is prohibited.	All Dimensions in Inches All Angles 90° All outside corners 0.125" fillet Unless Otherwise Specified		Tolerance Unless Otherwise Specified X.X ±.125 X.XX ±.060 X.XXX ±.030 Angles ±1°		 <div>N120 W18485 FREISTADT RD GERMANTOWN, WI 53022 Tel: (262) 946-7400 Fax: (262) 946-7401</div>	
			Drawn ASV	Date Released 1/19/2018		Description SP 60-80 TON PKG HWC
	Third Angle Projection		Sheet 4/8	Page Title DISCHARGE OPTIONS GA		
ALL DIMENSIONS ARE IN INCHES TOLERANCE ± 1/8"	Part weight	Scale NTS	Rev. 7	Drawing Number G1000-007		

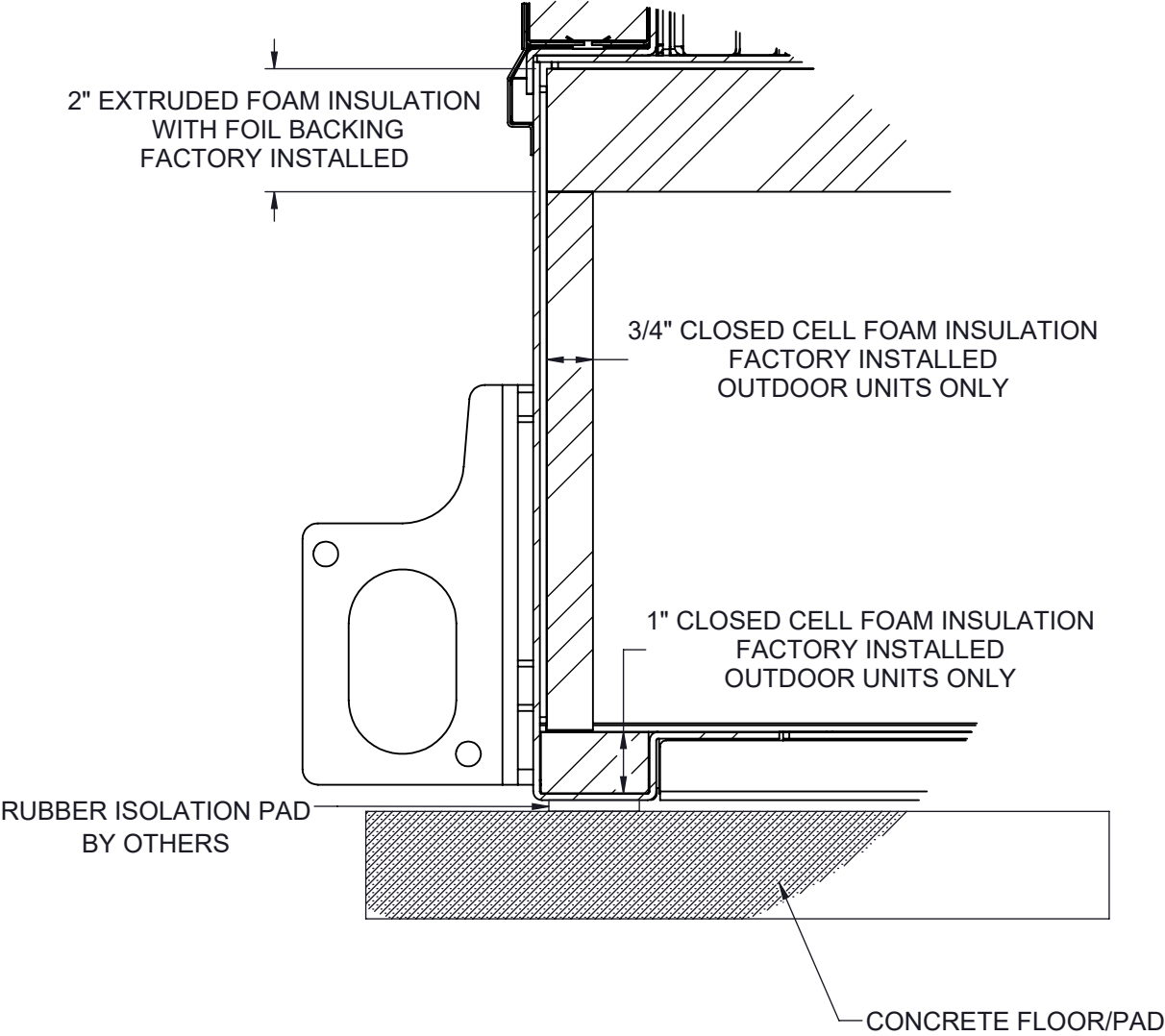
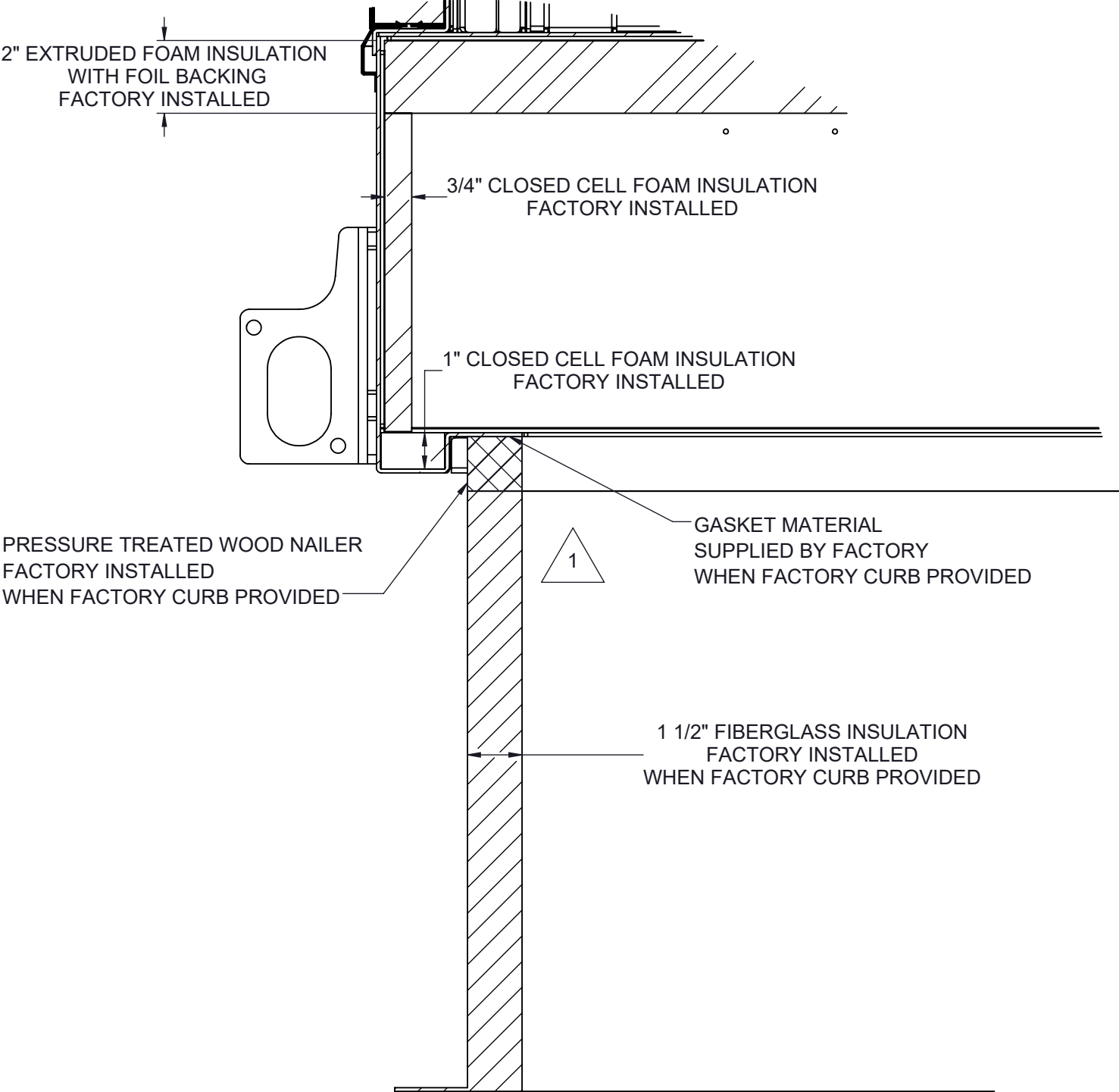


REFER TO SHEET 1 FOR GENERAL NOTES
LEFT HAND ACCESS SHOWN IN ALL VIEWS
RIGHT HAND ACCESS OPTIONS LOCATED WITH SAME DIMENSIONS ON OPPOSITE SIDE UNLESS OTHERWISE SPECIFIED


<p>Desert Aire has a policy of continuous product and quality improvement. Specifications and dimensions are subject to change without notice.</p> <p>This drawing and information contained herein are the exclusive property of the Desert Aire Corporation. Any use detrimental to the interests of Desert Aire is prohibited.</p>	<p>All Dimensions in Inches All Angles 90° All outside corners 0.125" fillet Unless Otherwise Specified</p>		<p>Tolerance Unless Otherwise Specified</p> <p>X.X ±.125 X.XX ±.060 X.XXX ±.030 Angles ±1°</p>		 <p>N120 W18485 FREISTADT RD GERMANTOWN, WI 53022 Tel: (262) 946-7400 Fax: (262) 946-7401</p>	
			<p>Drawn ASV</p>		<p>Date Released 1/19/2018</p>	
	<p>Third Angle Projection</p>		<p>Sheet 5/8</p>		<p>Description SP 60-80 TON PKG HWC</p>	
<p>ALL DIMENSIONS ARE IN INCHES TOLERANCE ± 1/8"</p>		<p>Part weight</p>		<p>Page Title UNIT CLEARANCE GA</p>		
		<p>Scale NTS</p>		<p>Rev. 7</p>		
				<p>Drawing Number G1000-007</p>		

CURB MOUNT

PAD MOUNT

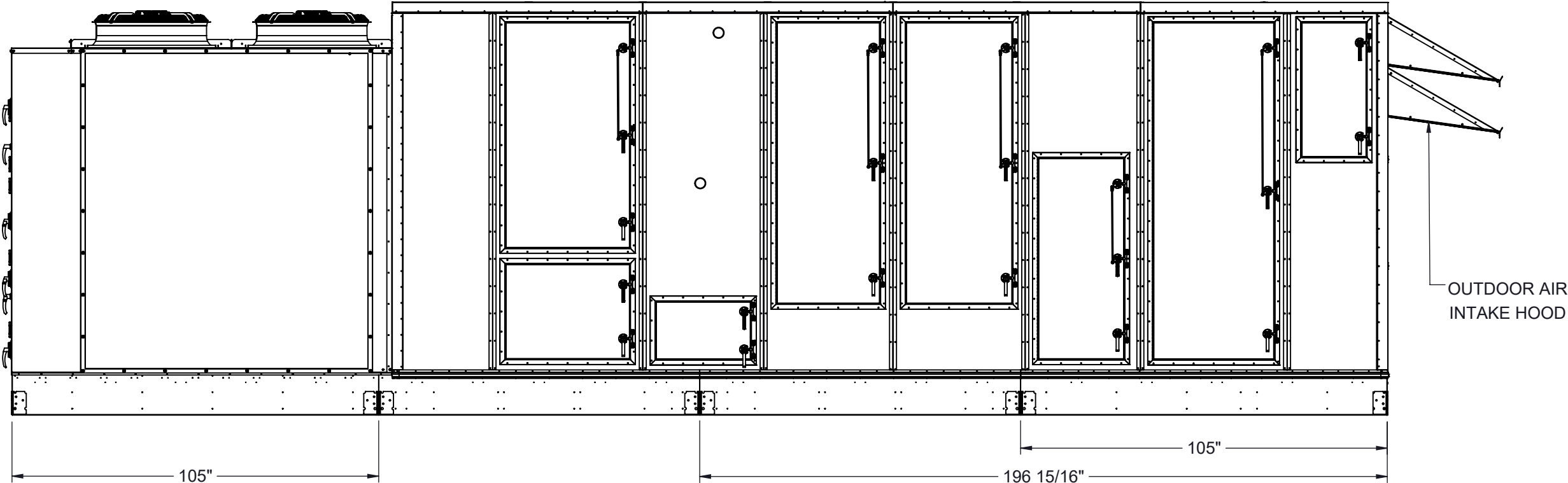


NOTES:
REFER TO SHEET 1 FOR GENERAL NOTES
SEE SHEET 6 NOTES FOR CURB SPECIFICATIONS

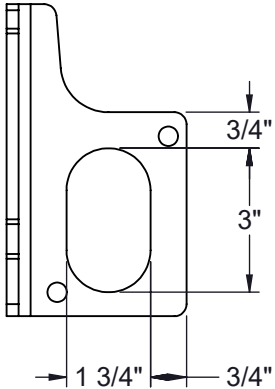
Desert Aire has a policy of continuous product and quality improvement. Specifications and dimensions are subject to change without notice. This drawing and information contained herein are the exclusive property of the Desert Aire Corporation. Any use detrimental to the interests of Desert Aire is prohibited.		All Dimensions in Inches All Angles 90° All outside corners 0.125" fillet Unless Otherwise Specified		Tolerance Unless Otherwise Specified X.X ±.125 X.XX ±.060 X.XXX ±.030 Angles ±1°		 N120 W18485 FREISTADT RD GERMANTOWN, WI 53022 Tel: (262) 946-7400 Fax: (262) 946-7401	
Third Angle Projection		Drawn ASV		Date Released 1/19/2018		Description SP 60-80 TON PKG HWC	
ALL DIMENSIONS ARE IN INCHES TOLERANCE ± 1/8"		Sheet 7/8		Page Title MOUNTING DETAILS GA		Drawing Number G1000-007	
Part weight		Scale NTS		Rev. 7			

SHIP LOOSE ITEMS
EXHAUST HOOD

DA PART NO	DESCRIPTION	QTY
HOOD	EXHAUST ASSEMBLY	1
890-465-003	BIRD SCREEN 39" X 57"	1
807-224	SCREW #10-12X1/2 SS	14
807-023	SCREW #8-18X1/2 SS	25
990-105	CAULK WHITE	1



LUG DETAIL



NOTES:
REFER TO SHEET 1 FOR GENERAL NOTES AND HOOD DETAILS

Desert Aire has a policy of continuous product and quality improvement. Specifications and dimensions are subject to change without notice. This drawing and information contained herein are the exclusive property of the Desert Aire Corporation. Any use detrimental to the interests of Desert Aire is prohibited.

ALL DIMENSIONS ARE IN INCHES
TOLERANCE $\pm 1/8"$

All Dimensions in Inches
All Angles 90°
All outside corners 0.125" fillet
Unless Otherwise Specified



Third Angle Projection

Part weight

Tolerance Unless
Otherwise Specified
X.X $\pm .125$
X.XX $\pm .060$
X.XXX $\pm .030$
Angles $\pm 1^\circ$

Drawn
ASV
Date Released
1/19/2018

Sheet
8/8

Scale
NTS



N120 W18485 FREISTADT RD
GERMANTOWN, WI 53022
Tel: (262) 946-7400
Fax: (262) 946-7401

Description
SP 60-80 TON PKG HWC

Page Title
SHIPPING/LIFTING DETAILS GA

Drawing Number
G1000-007