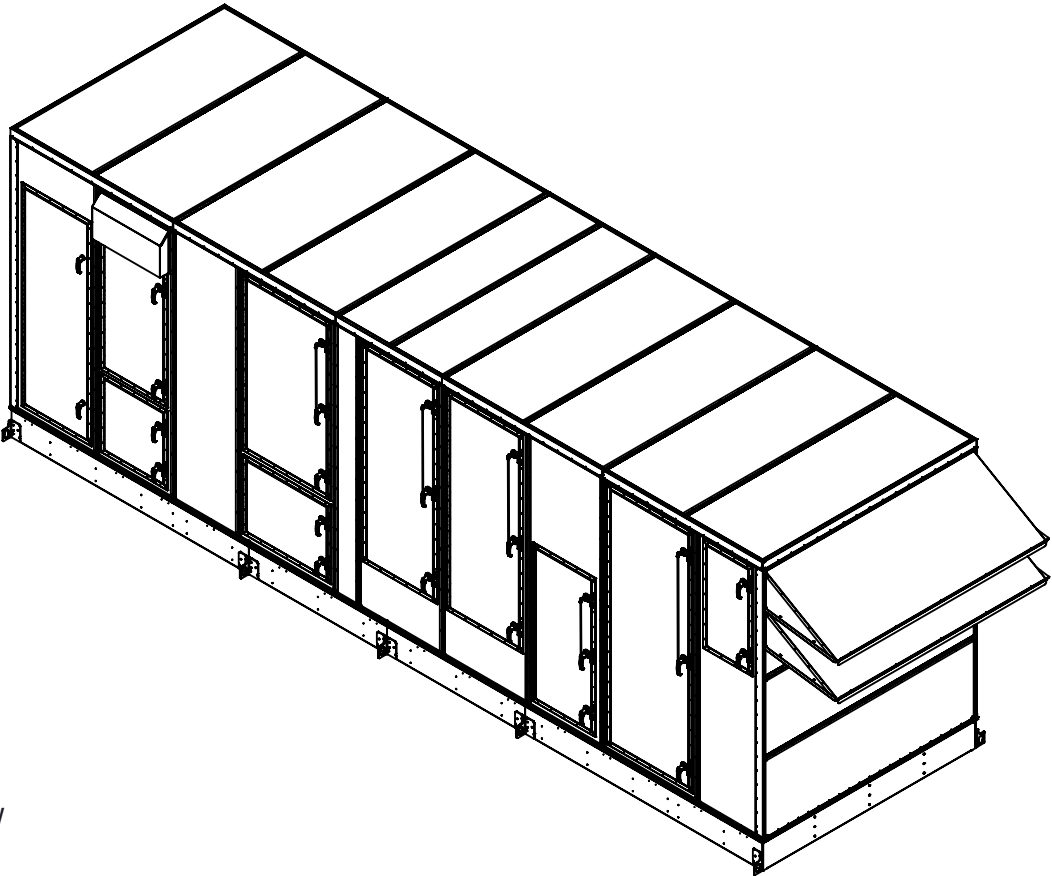
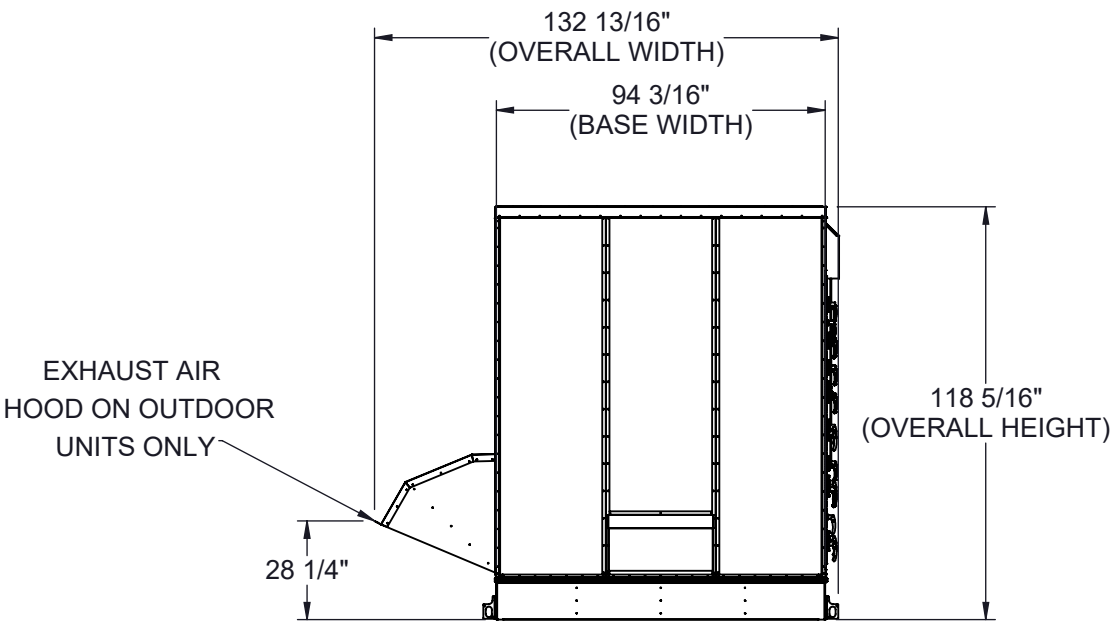


GENERAL NOTES FOR APPLICABLE SHEETS:

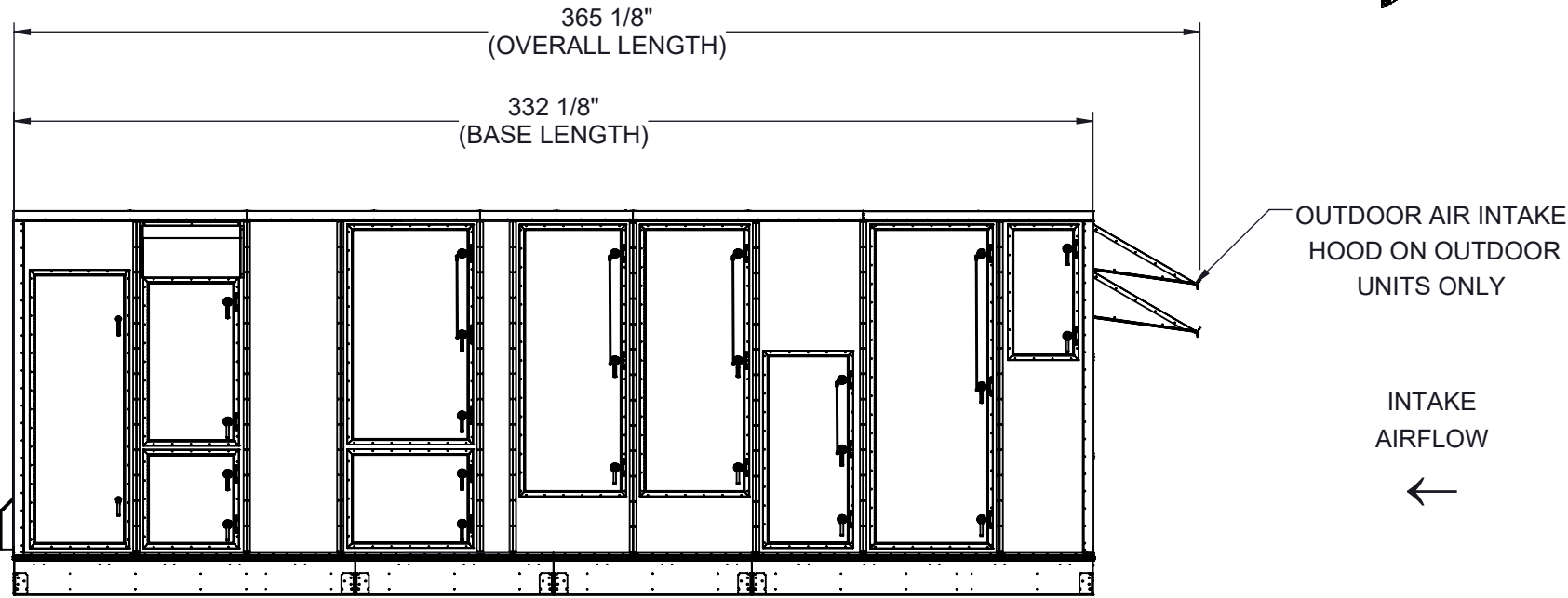
LEFT HAND ACCESS SHOWN IN ALL VIEWS
RIGHT HAND ACCESS OPTIONS LOCATED WITH SAME DIMENSIONS ON OPPOSITE SIDE UNLESS OTHERWISE SPECIFIED
WEIGHTS SHOWN REFLECT FULLY OPTIONED ESTIMATED UNIT WEIGHT



BACK VIEW



LEFT SIDE VIEW



UNIT SIZE	ESTIMATED WEIGHT (lbs.)
60 - 80 TONS	16500

Desert Aire has a policy of continuous product and quality improvement. Specifications and dimensions are subject to change without notice. This drawing and information contained herein are the exclusive property of the Desert Aire Corporation. Any use detrimental to the interests of Desert Aire is prohibited.

ALL DIMENSIONS ARE IN INCHES
TOLERANCE $\pm 1/8"$

All Dimensions in Inches
All Angles 90°
All outside corners 0.125" fillet
Unless Otherwise Specified



Third Angle Projection

Part weight

Tolerance Unless
Otherwise Specified
X.X $\pm .125$
X.XX $\pm .060$
X.XXX $\pm .030$
Angles $\pm 1^\circ$

Drawn
ASV
Date Released
1/19/2018

Sheet
1/9

Scale
NTS



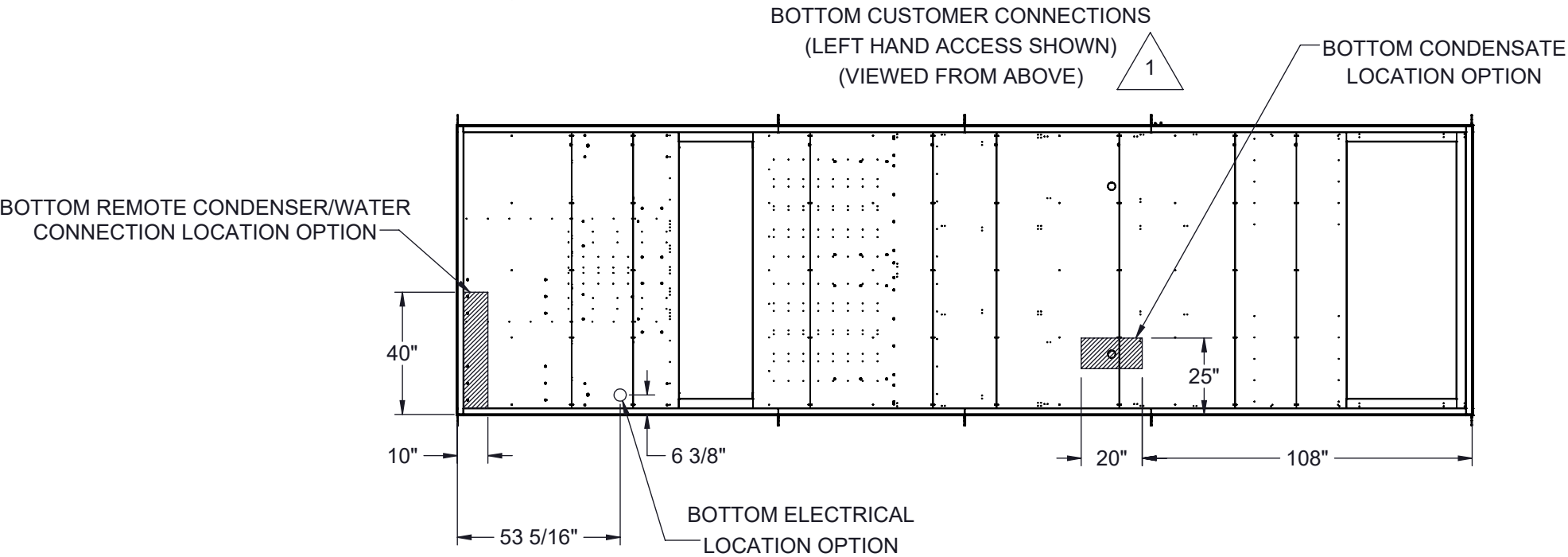
N120 W18485 FREISTADT RD
GERMANTOWN, WI 53022
Tel: (262) 946-7400
Fax: (262) 946-7401

Description
SP 60-80 TON SPLIT

Page Title
GENERAL ARRANGEMENT

Drawing Number
G1000-001

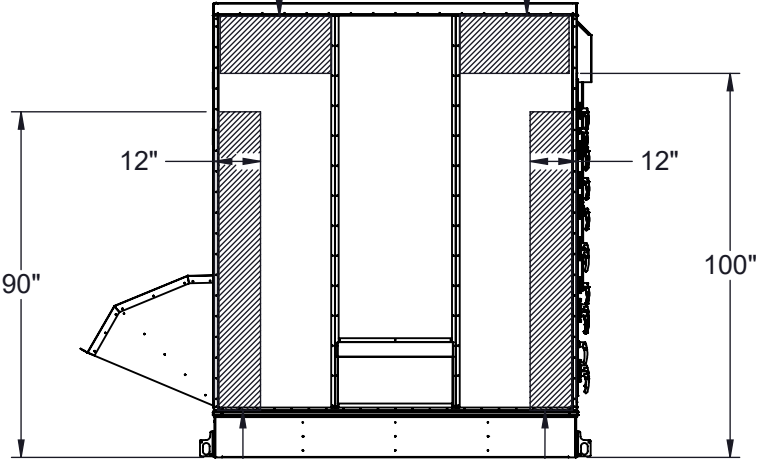
CUSTOMER CONNECTION LINE SIZE (in.)		
UNIT SIZE	60 TONS	70-80 TONS
CONDENSATE (PVC)	1 1/2	1 1/2
COOLING LOOP LINE CIRCUIT (CU)	3	3
POOL WATER LINE CIRCUIT A (CPVC)	2	3
POOL WATER LINE CIRCUIT B (CPVC)	3	3
DISCHARGE LINE CIRCUIT A (CU)	1 1/8	1 5/8
LIQUID LINE CIRCUIT A (CU)	7/8	1 1/8
DISCHARGE LINE CIRCUIT B (CU)	1 5/8	1 5/8
LIQUID LINE CIRCUIT B (CU)	1 1/8	1 1/8



BACK CONNECTIONS VIEW
(NO ORIENTATION CHANGE FOR RH OR LH ACCESS)

RH ACCESS
BACK ELECTRICAL
CONNECTION LOCATION
OPTION

LH ACCESS
BACK ELECTRICAL
CONNECTION LOCATION
OPTION

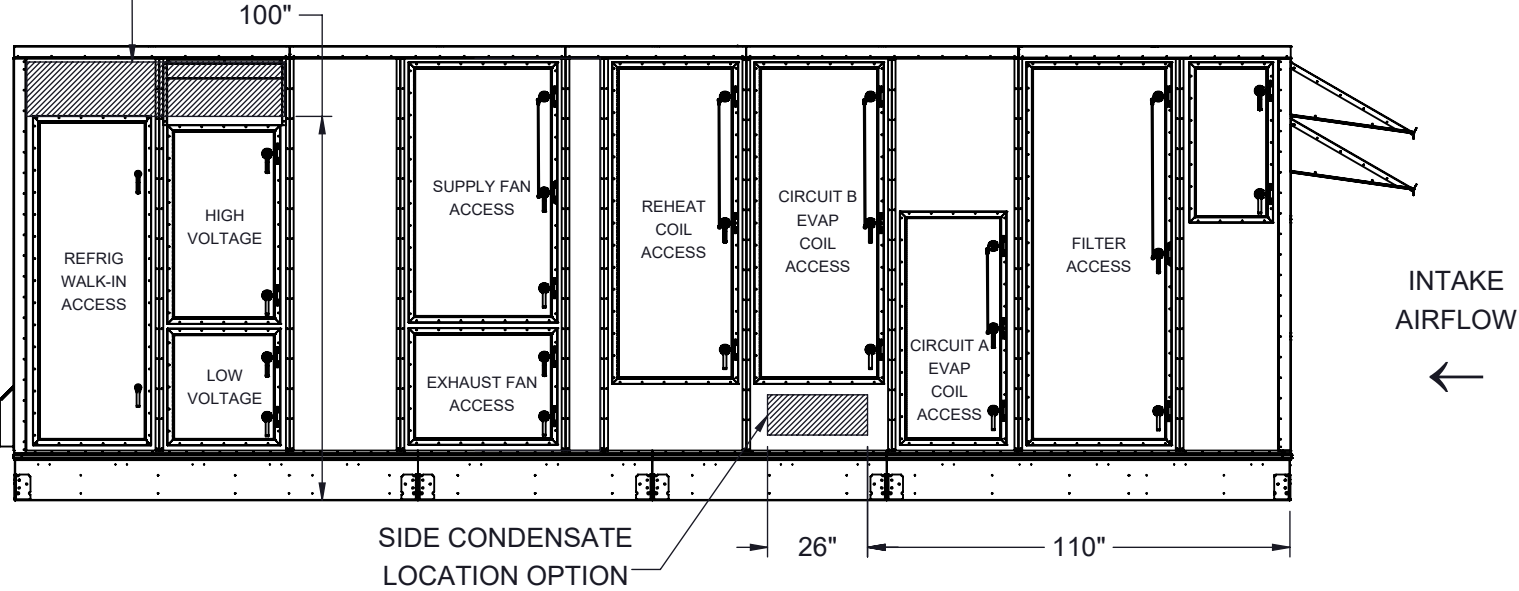


RIGHT BACK
REMOTE CONDENSER/WATER
CONNECTION LOCATION OPTION

LEFT BACK
REMOTE CONDENSER/WATER
CONNECTION LOCATION OPTION

SIDE ELECTRICAL
CONNECTION LOCATION OPTION

LEFT SIDE CONNECTION VIEW
(LEFT HAND ACCESS SHOWN)



NOTES:

REFER TO SHEET 1 FOR GENERAL NOTES

LEFT HAND ACCESS SHOWN IN ALL VIEWS

RIGHT HAND ACCESS OPTIONS LOCATED WITH SAME DIMENSIONS ON OPPOSITE SIDE UNLESS OTHERWISE SPECIFIED



FILTER INFORMATION						
UNIT SIZE	OA QTY	OA SIZE	REPLACEMENT PART NUMBER	RA QTY	RA SIZE	REPLACEMENT PART NUMBER
60-80 TONS	15	18 X 24 X 4	870-056	15	18 X 24 X 4	870-056

Desert Aire has a policy of continuous product and quality improvement. Specifications and dimensions are subject to change without notice. This drawing and information contained herein are the exclusive property of the Desert Aire Corporation. Any use detrimental to the interests of Desert Aire is prohibited.

ALL DIMENSIONS ARE IN INCHES
TOLERANCE $\pm 1/8"$

All Dimensions in Inches
All Angles 90°
All outside corners 0.125" fillet
Unless Otherwise Specified

Third Angle Projection

Part weight

Tolerance Unless Otherwise Specified
X.X $\pm .125$
X.XX $\pm .060$
X.XXX $\pm .030$
Angles $\pm 1^\circ$

Drawn **ASV** Date Released **1/19/2018**

Sheet **2/9**

Scale **NTS** Rev. **7**

DESERT AIRE

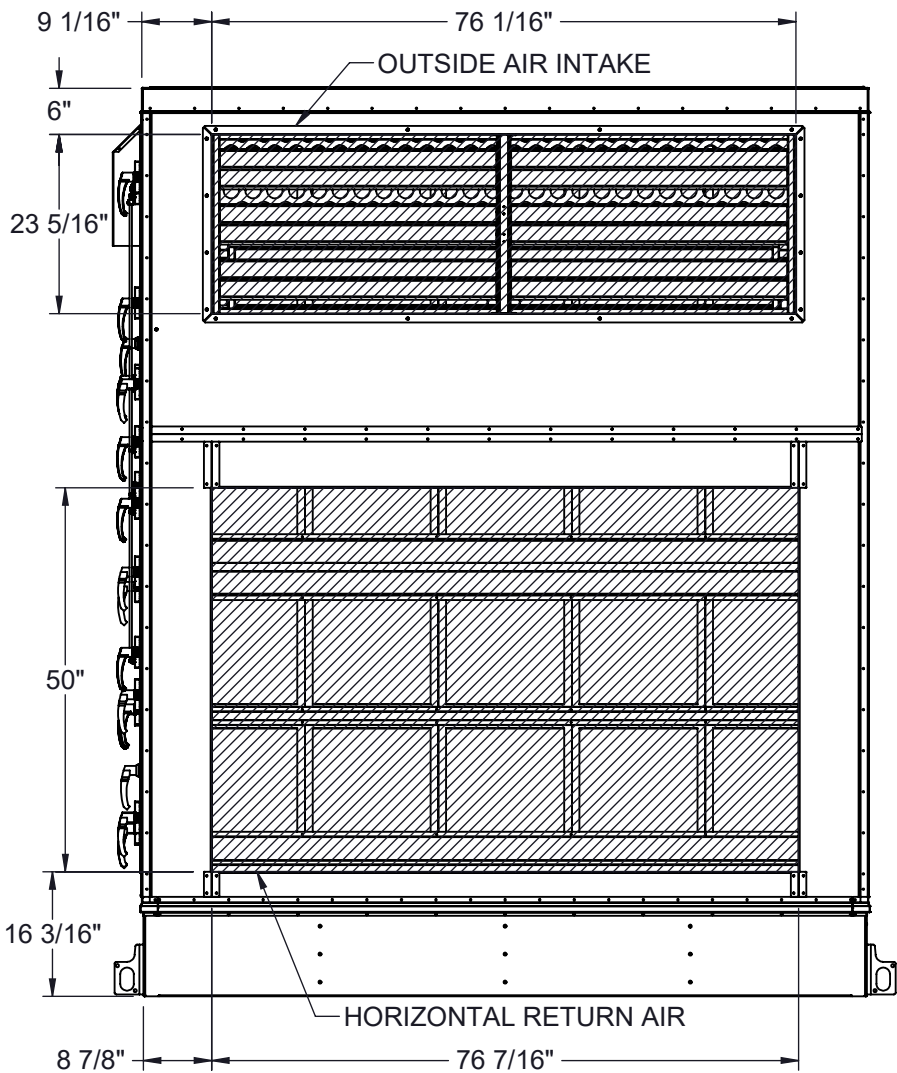
N120 W18485 FREISTADT RD
GERMANTOWN, WI 53022
Tel: (262) 946-7400
Fax: (262) 946-7401

Description **SP 60-80 TON SPLIT**

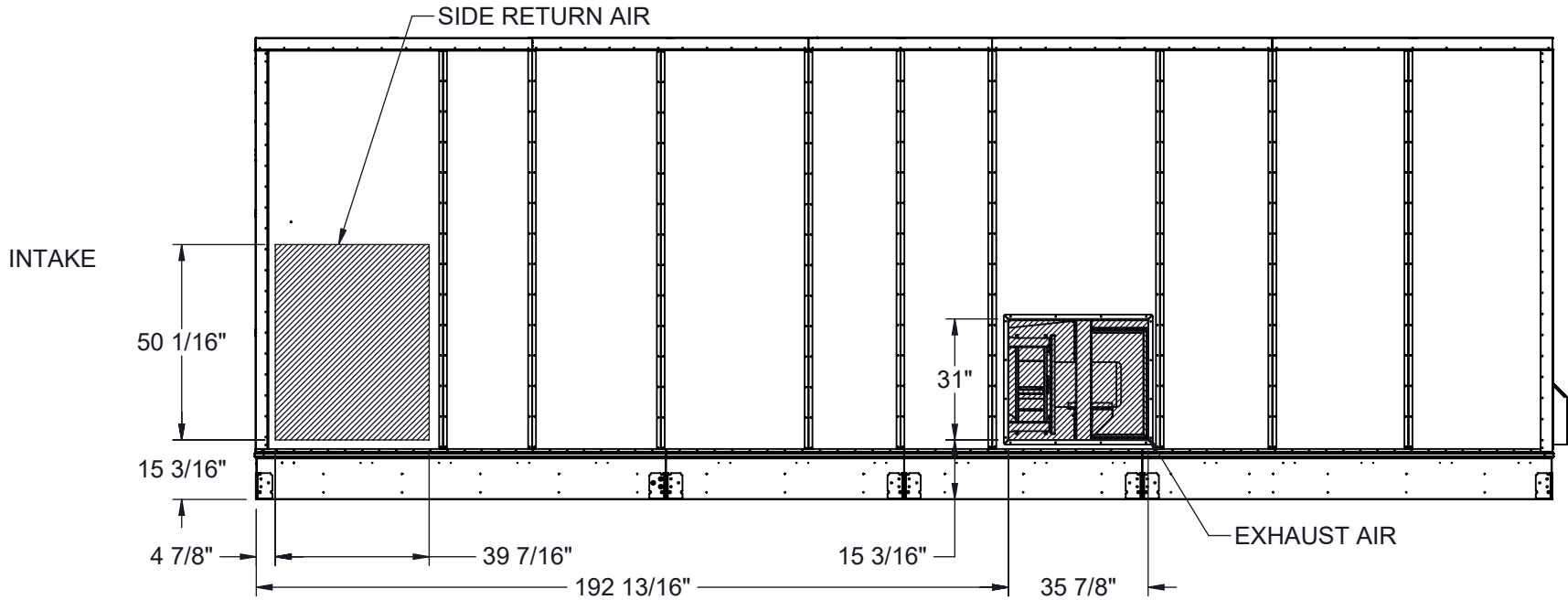
Page Title **CUSTOMER INTERFACE GA**

Drawing Number **G1000-001**

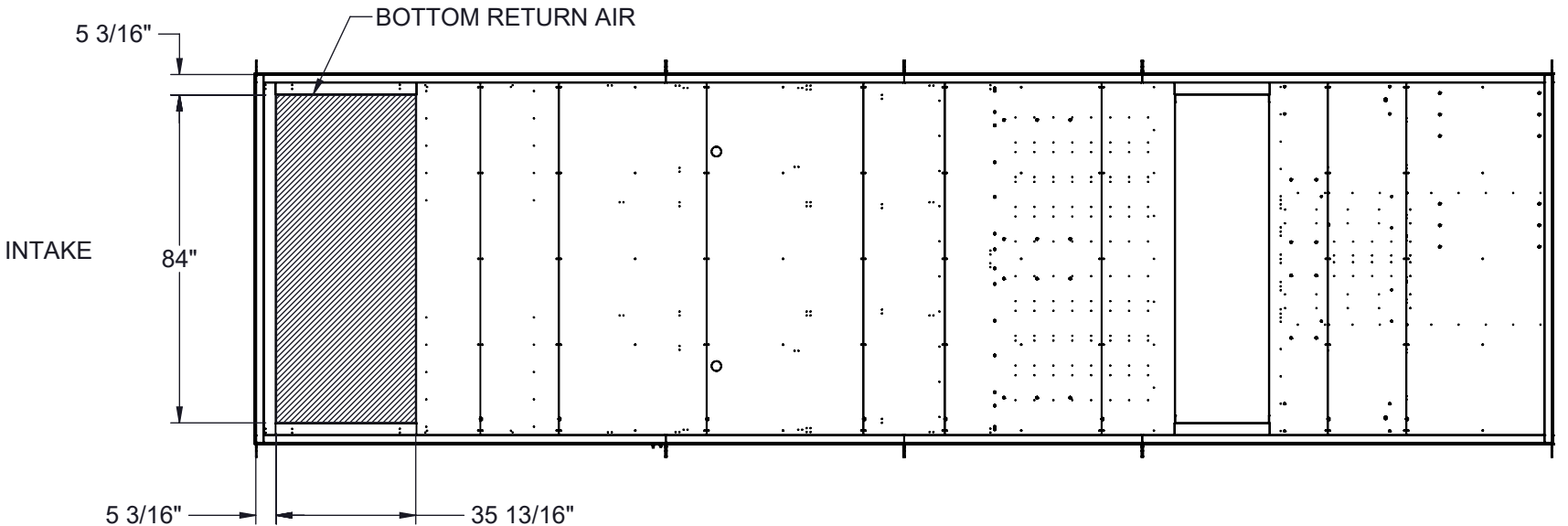
HORIZONTAL RETURN AIR OPTION
(INTAKE VIEW)



SIDE RETURN AIR OPTION
(SIDE VIEW)



BOTTOM RETURN AIR OPTION
(VIEW FROM ABOVE)



NOTES:
REFER TO SHEET 1 FOR GENERAL NOTES
HOODS REMOVED FOR CLARITY
ACCESS SIDE RETURN AIR OPTION WILL SHIFT FILTER SECTION DOORS TO NON-ACCESS SIDE
OUTSIDE AIR INTAKE LOCATED IN THE SAME POSITION REGARDLESS OF OPTIONS

Desert Aire has a policy of continuous product and quality improvement. Specifications and dimensions are subject to change without notice. This drawing and information contained herein are the exclusive property of the Desert Aire Corporation. Any use detrimental to the interests of Desert Aire is prohibited.

ALL DIMENSIONS ARE IN INCHES
TOLERANCE $\pm 1/8"$

All Dimensions in Inches
All Angles 90°
All outside corners 0.125" fillet
Unless Otherwise Specified



Third Angle Projection

Part weight

Tolerance Unless
Otherwise Specified
X.X $\pm .125$
X.XX $\pm .060$
X.XXX $\pm .030$
Angles $\pm 1^\circ$

Drawn
ASV
Date Released
1/19/2018

Sheet
3/9

Scale
NTS



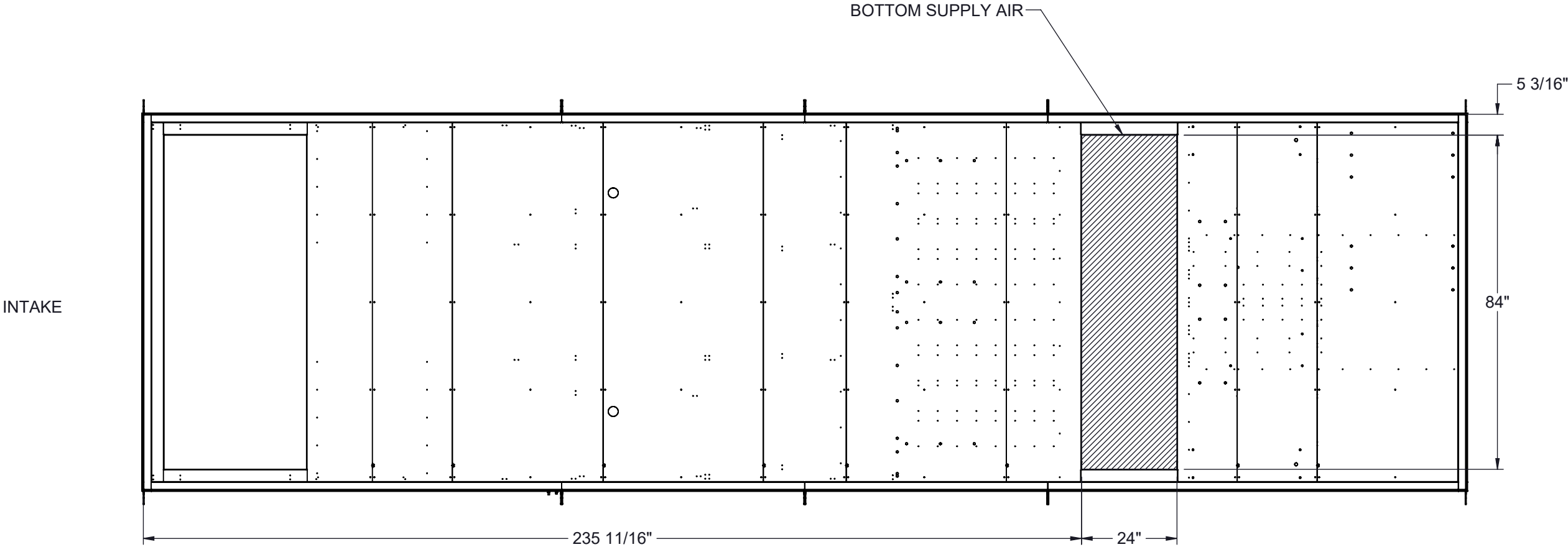
N120 W18485 FREISTADT RD
GERMANTOWN, WI 53022
Tel: (262) 946-7400
Fax: (262) 946-7401

Description
SP 60-80 TON SPLIT

Page Title
INTAKE OPTIONS GA

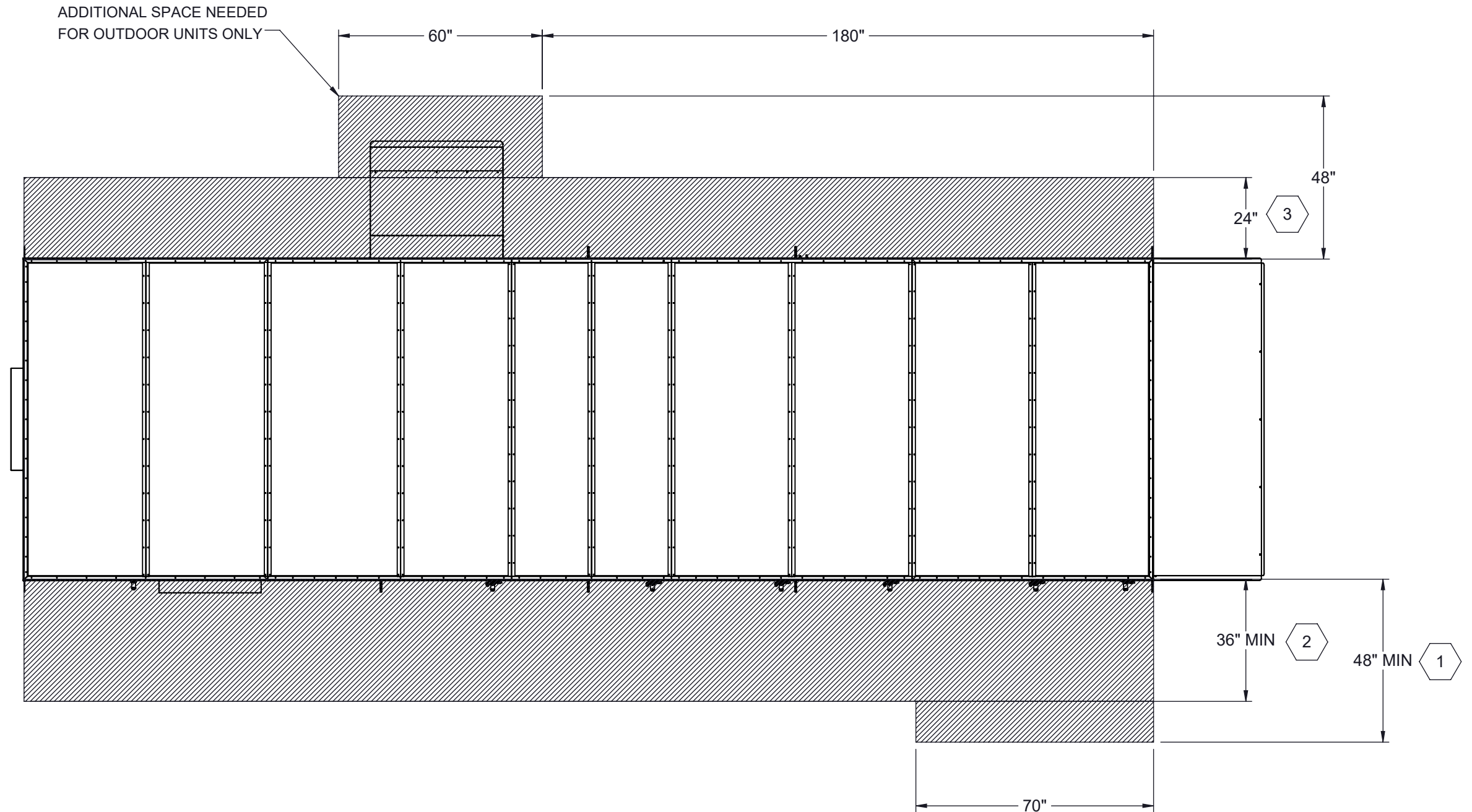
Drawing Number
G1000-001

BOTTOM SUPPLY OPTION
(VIEW FROM ABOVE)
(NO ORIENTATION CHANGE FOR RH OR LH ACCESS)





NOTES:
REFER TO SHEET 1 FOR GENERAL NOTES
LEFT HAND ACCESS SHOWN IN ALL VIEWS UNLESS OTHERWISE SPECIFIED
RIGHT HAND ACCESS OPTIONS LOCATED WITH SAME DIMENSIONS ON OPPOSITE SIDE UNLESS OTHERWISE SPECIFIED
HOODS REMOVED FOR CLARITY

Desert Aire has a policy of continuous product and quality improvement. Specifications and dimensions are subject to change without notice. This drawing and information contained herein are the exclusive property of the Desert Aire Corporation. Any use detrimental to the interests of Desert Aire is prohibited.		All Dimensions in Inches All Angles 90° All outside corners 0.125" fillet Unless Otherwise Specified		Tolerance Unless Otherwise Specified X.X ±.125 X.XX ±.060 X.XXX ±.030 Angles ±1°		<div>DESERT AIRE</div> <div>N120 W18485 FREISTADT RD GERMANTOWN, WI 53022 Tel: (262) 946-7400 Fax: (262) 946-7401</div>	
<div><div></div><div></div></div> Third Angle Projection		Drawn ASV		Date Released 1/19/2018		Description SP 60-80 TON SPLIT	
		Sheet 4/9		Rev. 7		Page Title DISCHARGE OPTIONS GA	
ALL DIMENSIONS ARE IN INCHES TOLERANCE ± 1/8"		Part weight		Scale NTS		Drawing Number G1000-001	



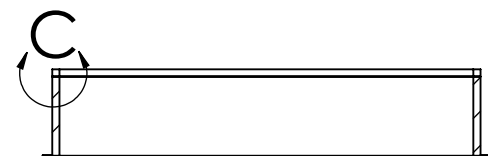
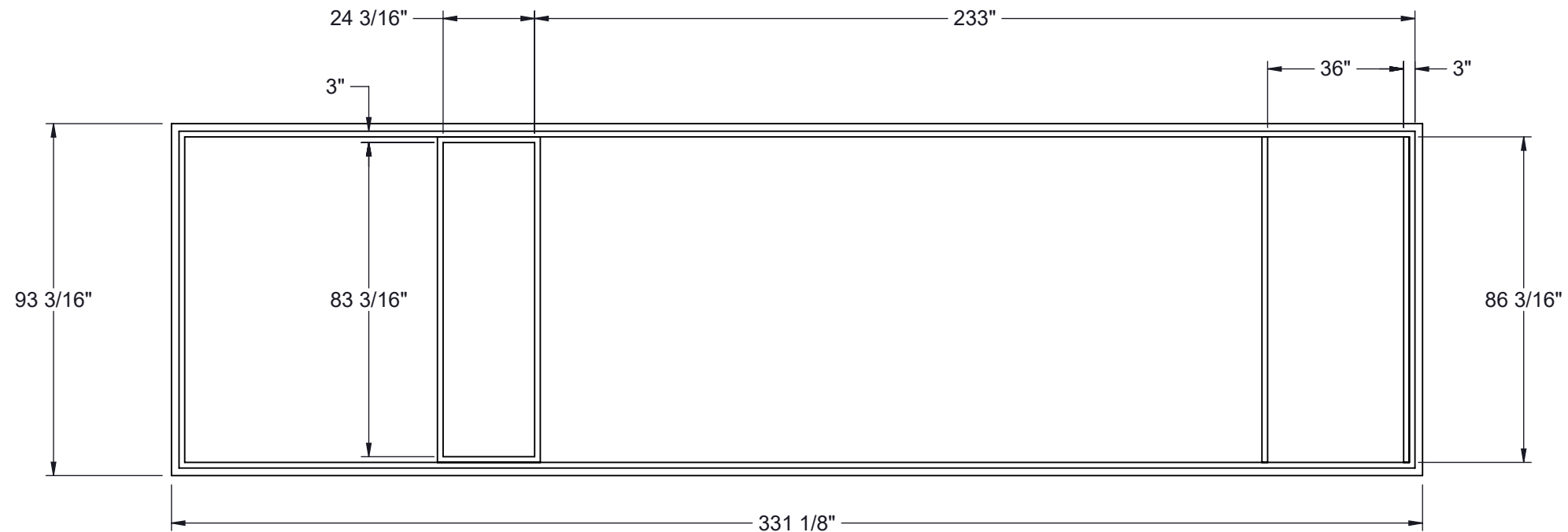
- 1 96" RECOMMENDED FOR FILTER ACCESS.
- 2 120" CLEARANCE ON ACCESS SIDE RECOMMENDED FOR FAN AND COIL SERVICE
- 3 REQUIRED FOR ASSEMBLY OF SECTIONED UNITS ONLY

NOTES:
REFER TO SHEET 1 FOR GENERAL NOTES
LEFT HAND ACCESS SHOWN IN ALL VIEWS
RIGHT HAND ACCESS OPTIONS LOCATED WITH SAME DIMENSIONS ON OPPOSITE SIDE UNLESS OTHERWISE SPECIFIED

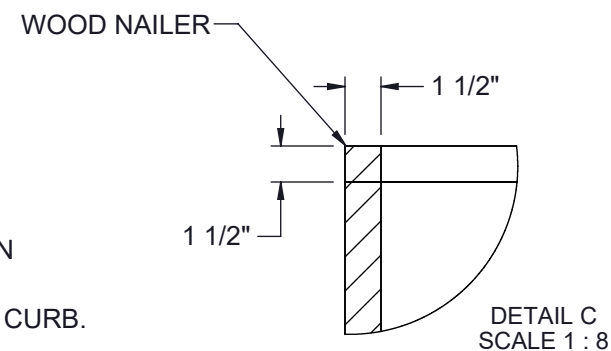
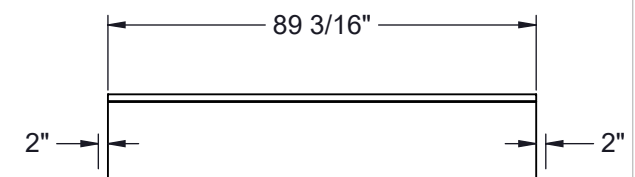
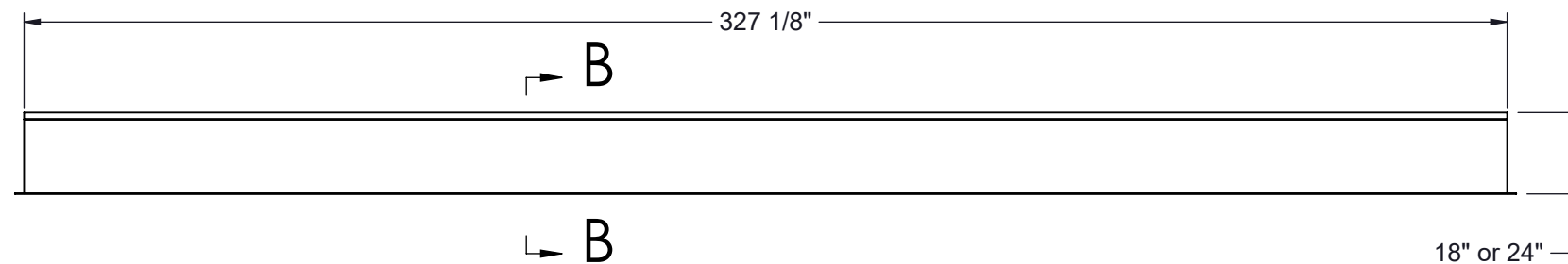
<p>Desert Aire has a policy of continuous product and quality improvement. Specifications and dimensions are subject to change without notice. This drawing and information contained herein are the exclusive property of the Desert Aire Corporation. Any use detrimental to the interests of Desert Aire is prohibited.</p>	<p>All Dimensions in Inches All Angles 90° All outside corners 0.125" fillet Unless Otherwise Specified</p>	<p>Tolerance Unless Otherwise Specified</p> <p>X.X ±.125 X.XX ±.060 X.XXX ±.030 Angles ±1°</p>		 <p>N120 W18485 FREISTADT RD GERMANTOWN, WI 53022 Tel: (262) 946-7400 Fax: (262) 946-7401</p>
		Drawn ASV	Date Released 1/19/2018	
<p>ALL DIMENSIONS ARE IN INCHES TOLERANCE ± 1/8"</p>	Third Angle Projection	Sheet 5/9		Page Title UNIT CLEARANCE GA
	Part weight	Scale NTS	Rev. 7	Drawing Number G1000-001

NOTES:
REFER TO SHEET 1 FOR GENERAL NOTES

- | | | |
|----------|--------------|--------------|
| UNIT TON | 18" CURB | 24" CURB |
| 60-80 | CB-80NNBN-18 | CB-80NNBN-24 |



SECTION B-B



NUMBER AND LOCATION OF CROSS SUPPORTS IS DEPENDANT UPON THE GUAGE OF MATERIAL USED TO CONSTRUCT THE CURB, DUCT SUPPORT CONFIGURATION LENGTH OF CURB, AND WIDTH OF CURB. INSTALLATION INSTRUCTIONS INCLUDED WITH CURB SHIPMENT INDICATE THE REQUIRED POSITION FOR FIELD ASSEMBLED CURBS.

Desert Aire has a policy of continuous product and quality improvement. Specifications and dimensions are subject to change without notice. This drawing and information contained herein are the exclusive property of the Desert Aire Corporation. Any use detrimental to the interests of Desert Aire is prohibited.

ALL DIMENSIONS ARE IN INCHES
TOLERANCE $\pm 1/8"$

All Dimensions in Inches
All Angles 90°
All outside corners 0.125" fillet
Unless Otherwise Specified

Part weight

Tolerance Unless Otherwise Specified	
X.X	$\pm .125$
X.XX	$\pm .060$
X.XXX	$\pm .030$
Angles	$\pm 1^{\circ}$

Drawn	Date Released
ASV	1/19/2018

Sheet 6/9

Scale NTS

DESERT AIRE

N120 W18485 FREISTADT RD
GERMANTOWN, WI 53022
Tel: (262) 946-7400
Fax: (262) 946-7401

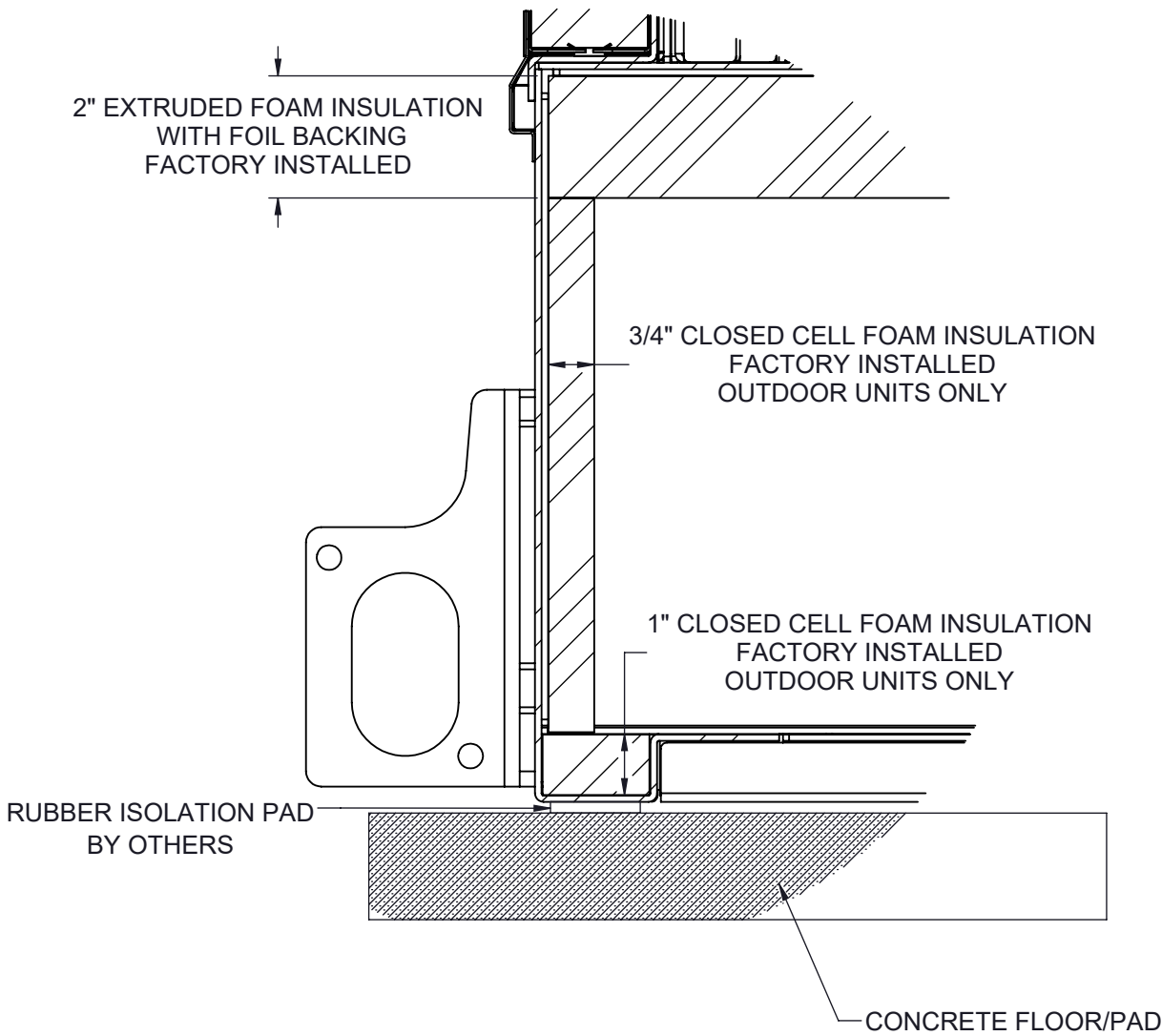
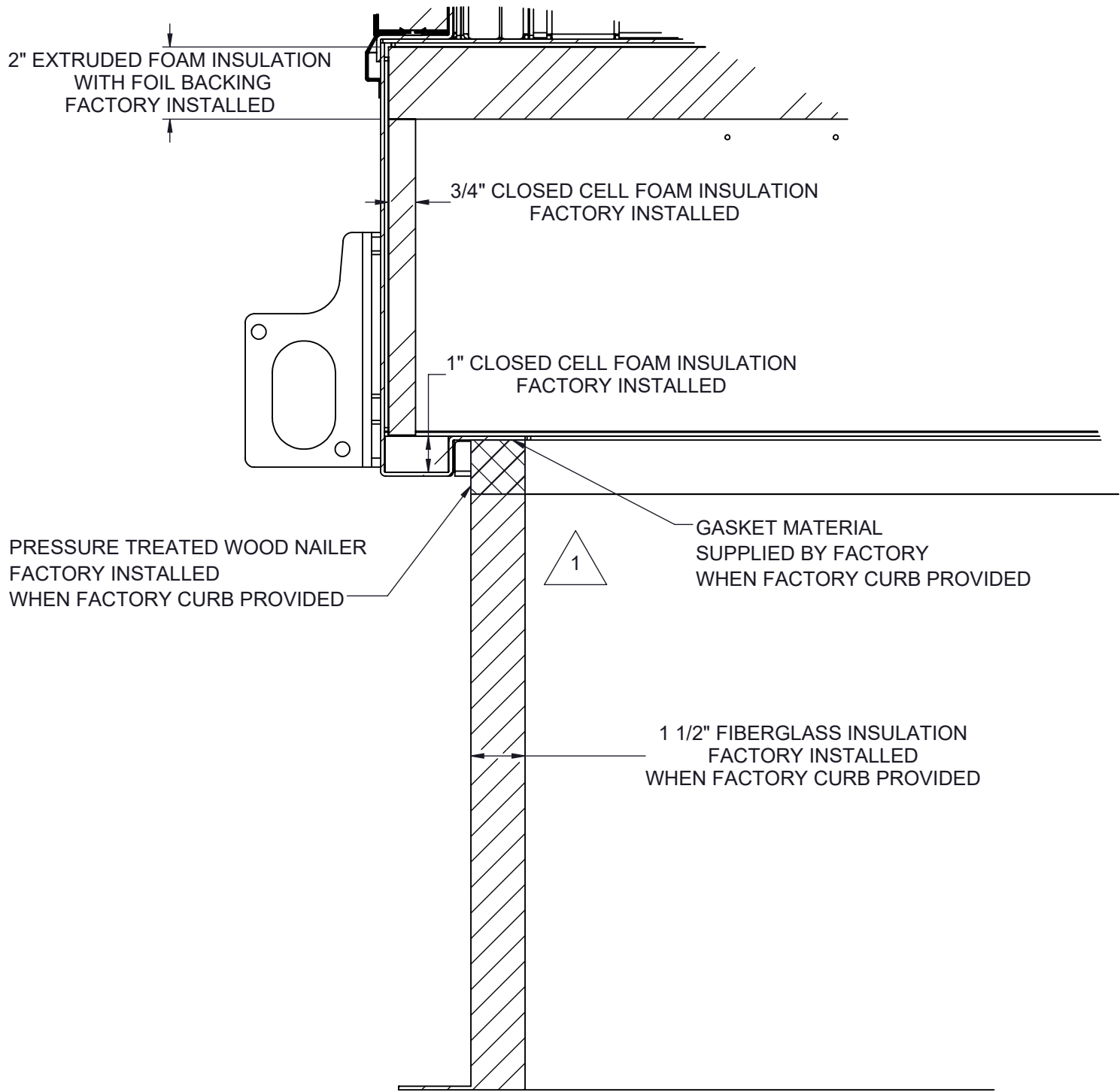
Description	SP 60-80 TON SPLIT
-------------	--------------------

Page Title	CURB DETAIL GA
------------	----------------

Drawing Number	G1000-001
----------------	-----------

CURB MOUNT

PAD MOUNT



1 ALL EXPOSED METAL TO BE SPRAY FOAM INSULATION AFTER INSTALLATION

NOTES:
REFER TO SHEET 1 FOR GENERAL NOTES
SEE SHEET 6 NOTES FOR CURB SPECIFICATIONS

Desert Aire has a policy of continuous product and quality improvement. Specifications and dimensions are subject to change without notice. This drawing and information contained herein are the exclusive property of the Desert Aire Corporation. Any use detrimental to the interests of Desert Aire is prohibited.

ALL DIMENSIONS ARE IN INCHES
TOLERANCE $\pm 1/8"$

All Dimensions in Inches
All Angles 90°
All outside corners 0.125" fillet
Unless Otherwise Specified



Third Angle Projection

Part weight

Tolerance Unless
Otherwise Specified
X.X $\pm .125$
X.XX $\pm .060$
X.XXX $\pm .030$
Angles $\pm 1^\circ$

Drawn
ASV
Date Released
1/19/2018

Sheet
7/9

Scale
NTS



N120 W18485 FREISTADT RD
GERMANTOWN, WI 53022
Tel: (262) 946-7400
Fax: (262) 946-7401

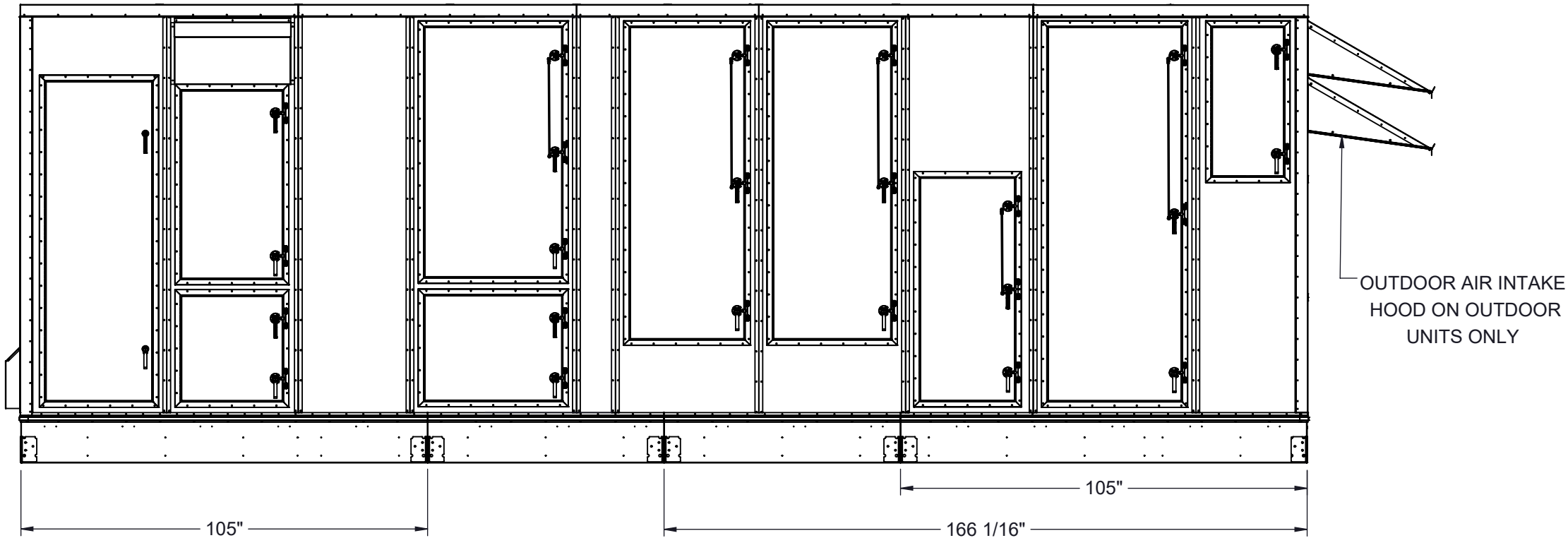
Description
SP 60-80 TON SPLIT

Page Title
MOUNTING DETAILS GA

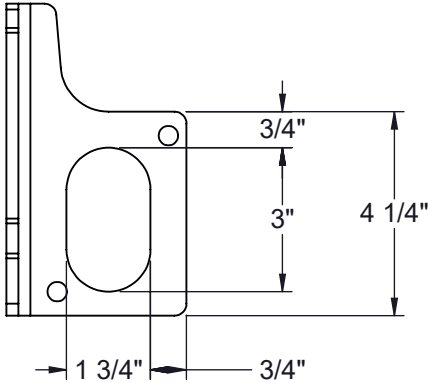
Drawing Number
G1000-001

SHIP LOOSE ITEMS
EXHAUST HOOD

OUTDOOR UNITS ONLY		
DA PART NO	DESCRIPTION	QTY
HOOD	EXHAUST ASSEMBLY	1
807-023	SCREW #8-18X1/2 SS	36
990-105	CAULK WHITE	1



Lug Detail



NOTES:
REFER TO SHEET 1 FOR GENERAL NOTES AND HOOD DETAILS

Desert Aire has a policy of continuous product and quality improvement. Specifications and dimensions are subject to change without notice. This drawing and information contained herein are the exclusive property of the Desert Aire Corporation. Any use detrimental to the interests of Desert Aire is prohibited.

ALL DIMENSIONS ARE IN INCHES
TOLERANCE $\pm 1/8"$

All Dimensions in Inches
All Angles 90°
All outside corners 0.125" fillet
Unless Otherwise Specified

Third Angle Projection

Part weight

Tolerance Unless Otherwise Specified	
X.X	$\pm .125$
X.XX	$\pm .060$
X.XXX	$\pm .030$
Angles	$\pm 1^\circ$

Drawn	Date Released	Description
ASV	1/19/2018	SP 60-80 TON SPLIT
Sheet	8/9	Page Title
		SHIPPING/LIFTING DETAILS GA
Scale	Rev.	Drawing Number
NTS	7	G1000-001

N120 W18485 FREISTADT RD
GERMANTOWN, WI 53022
Tel: (262) 946-7400
Fax: (262) 946-7401

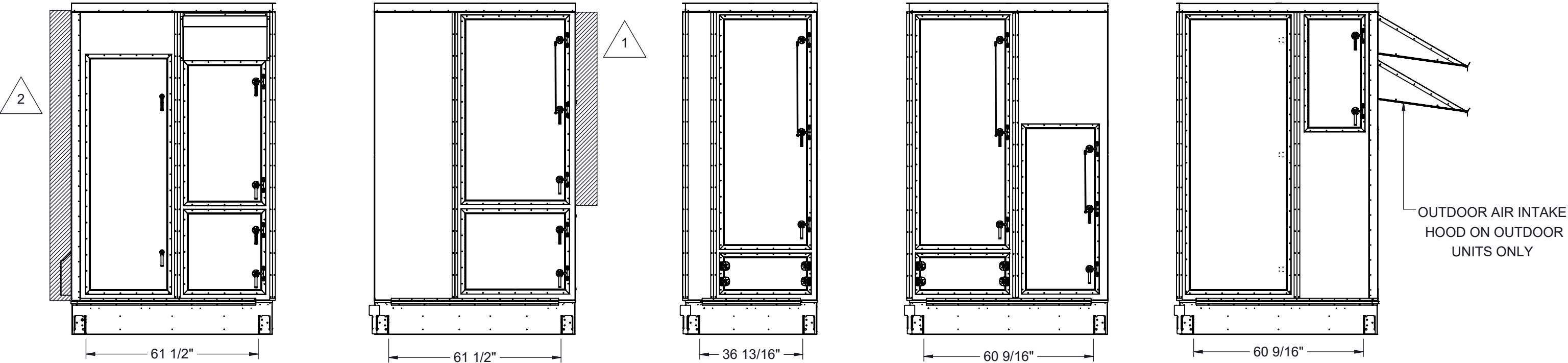
G1000-001

SHIP LOOSE ITEMS

EXHAUST HOOD		
OUTDOOR UNITS ONLY		
DA PART NO	DESCRIPTION	QTY
HOOD	EXHAUST ASSEMBLY	1
807-023	SCREW #8-18X1/2 SS	36
990-105	CAULK WHITE	1

SECTION ITEMS		
DA PART NO	DESCRIPTION	QTY
807-023	SCREW #8-18X1/2 SS	688
807-007	BOLT 3/8-16X1 SS	16
807-008	WASHER 3/8 FLAT SS	16
807-009	WASHER LOCK SPLIT 3/8 SS	16
807-010	NUT 3/8-16 SS	16
807-223	SCREW #10-32x1/2 MACHINE HEX	16
950-089	TAPER SEAM SEALER 2"	120 FT (3 ROLLS)
950-090	TAPE SEAM SEALER 4"	15 FT
990-105	CAULK WHITE	8
352-098-040	BASE Z CVR SIDE,MID SEC	8
STRIPS	2.5" X 103" METAL SIDE STRIPS	8
STRIPS	2.5" X 92 1/2" METAL TOP STRIPS	4
STRIPS	1" X 3" X 24" METAL CORNER STRIPS	8

SHIPPING AND LIFTING DETAILS FOR MULTI-SECTION CONSTRUCTION OPTION ONLY



- 1

BACKDRAFT DAMPER OPTION ADDS AN ADDITIONAL 9" TO FAN SECTION LENGTH
- 2

REMOTE CONDENSER/WATER CONNECTIONS WILL ADD AN ADDITION MAXIMUM OF 8"

NOTES:
REFER TO SHEET 1 FOR GENERAL NOTES AND HOOD DETAILS
UNIT SHIPPED IN FIVE SECTIONS SEE I/O MANUAL FOR ASSEMBLY DETAILS

Desert Aire has a policy of continuous product and quality improvement. Specifications and dimensions are subject to change without notice. This drawing and information contained herein are the exclusive property of the Desert Aire Corporation. Any use detrimental to the interests of Desert Aire is prohibited.

ALL DIMENSIONS ARE IN INCHES
TOLERANCE ± 1/8"

All Dimensions in Inches
All Angles 90°
All outside corners 0.125" fillet
Unless Otherwise Specified

Third Angle Projection

Part weight

Tolerance Unless Otherwise Specified
X.X ±.125
X.XX ±.060
X.XXX ±.030
Angles ±1°

Drawn

ASV

Date Released

1/19/2018

Sheet

9/9

Scale

NTS

Rev.

7

N120 W18485 FREISTADT RD
GERMANTOWN, WI 53022
Tel: (262) 946-7400
Fax: (262) 946-7401

Description

SP 60-80 TON SPLIT

Page Title

SECTIONED LIFTING DETAILS GA

Drawing Number

G1000-001